



WOMA[®]



Leading in water power.



WOMA[®]
Kärcher Group

Water as a tool

→ COMPANY

In this world, there is nothing softer or thinner than water. But to compel the hard and unyielding, it has no equal.

Lao-tse

For over 50 years, our engineers have been probing ever deeper into the fascinating possibilities of water power. This has made us a leading innovator in the field of high pressure water-jet technology.

Belonging to the Kärcher Group since 2011, we develop and manufacture custom solutions for all areas of industry and trade. That is why we are able to provide you with a range of products which are exemplary in their quality, reliability, and economic efficiency. Our service ensures that you will always have a contact person, round the clock and anywhere in the world.

WOMA®. Leading in water power.





→ APPLICATIONS

Water is a friendly element
for those who are familiar with it
and who know how to treat it.

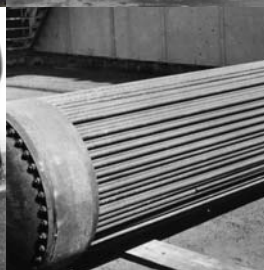
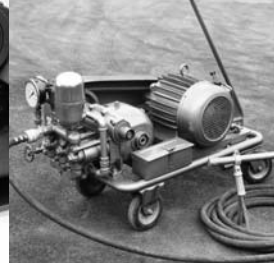
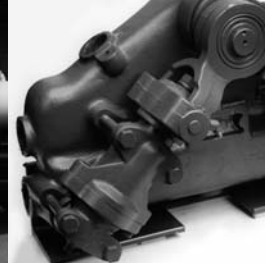
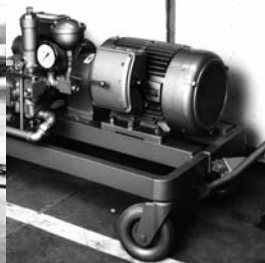
Johann Wolfgang von Goethe

Because water is liquid, it can be channeled in any direction. This idea has been the foundation of our work since our company's founding.

Based on this, we have developed a product range offering the right solution for every need. The basis of this flexibility is the variable ability to combine various different modules:

- Depending on nozzle type, you can cut, grade, deburr, strip, remove, or decontaminate.
- Depending on pump capacity, water pressures of up to 4500 bar can be achieved.
- According to your utilization of the units, we are able to supply you with stationary or mobile units.

With WOMA® you will always have the best solution combining minimized operating costs with the greatest possible working efficiency.



→ CHRONICLE 1962 – 2012: 50 years of WOMA®

You can stop water at the source with a small branch, but let it run unchecked and it will overwhelm even an elephant.

Chinese proverb



Wolfgang Maasberg began with the development of high-pressure water jet technology at the company of his father – Oskar Maasberg, Salz- und Chemikalienhandel – where he set up the WOMA department

1955



1959
Operating pressures of up to 60 bar / 120 l/min

1959

The first WOMA-ATÜLAG for sewer cleaning: self-propelled, 60 bar, 120 l/min



Official founding of WOMA® Apparatebau GmbH in Duisburg, by Mr. **W**olfgang **M**asberg, the son of Oskar Maasberg

1962



50 years of WOMA® means 50 years in which we have consistently researched the possibilities water power presents and continuously increased its breadth of applicability. This expertise, the acquired expertise of a leader in innovation, has paid off with the high level of confidence and trust which our customers place in our company.

Worldwide.



Sale of the
business to the
FLOW company
in Seattle

Mr. Theo Sausen
becomes the managing

1969
Operating
pressures
of up to
750 bar

Continuous further develop-
ment of the high-pressure
water jetting technology

Leading in high pressure...

1982
Operating
pressures
of up to
1 000 bar

1986
Operating
pressures
of up to
1 400 bar

After a management
buyout Mr. Theo Sausen
becomes the sole managing
partner of WOMA®
Apparatebau GmbH with
subsidiaries in Australia,
Belgium, China, England,
Mexico, Austria, Singapore,
Spain and the USA.

1970's

1985

1986

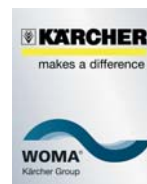
1988

→ IMAGEFILM



www.woma.de

Technological quantum leap:
today's operating pressures
of up to 4000 bar



WOMA® Group

WOMA® GmbH and
Alfred Kärcher GmbH & Co. KG
join forces



1990
Operating
pressures
of up to
2000 bar

1994
Operating
pressures
of up to
2500 bar

2003
Operating
pressures
of up to
3000 bar

WOMA®
Apparatebau GmbH
is renamed
WOMA® GmbH

2011
Operating
pressures
of up to
4000 bar

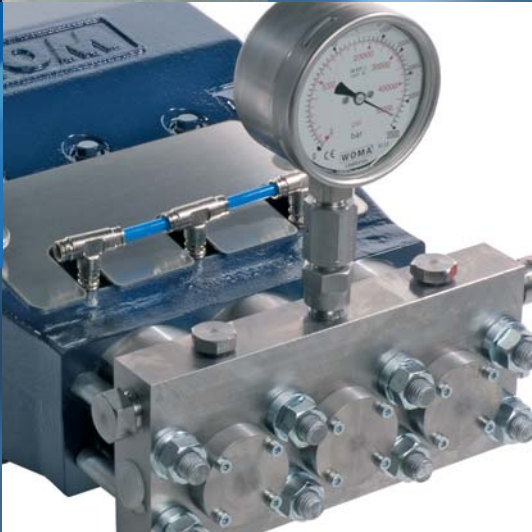
Kärcher acquired the majority stake in
WOMA® GmbH

Mr. Theo Sausen continues as
co-partner and Chairman of the Board,
together with Markus Asch,
Deputy Managing Director of Kärcher,
and Jochen Trautmann

2009

2011

2012



→ QUALITY

The principle of all things is water,
because water is everything and
everything turns back into water.

Thales von Milet

Only a reliable and precise water tool ensures environmentally friendly use of this precious resource. Thus the responsibility we feel toward water as a natural resource has led us to develop a philosophy of quality in which nothing is left to chance. Early on we already had our quality management system certified by TÜV SÜD ISO 9001:2008.

With our highly skilled staff we develop technical innovations of first-class excellence and develop these at our factory up to market maturity. In this way we ensure continuous control over the entire production chain.

The results are products which work extremely economically, and which have passed the test of practical application.

→ SERVICE

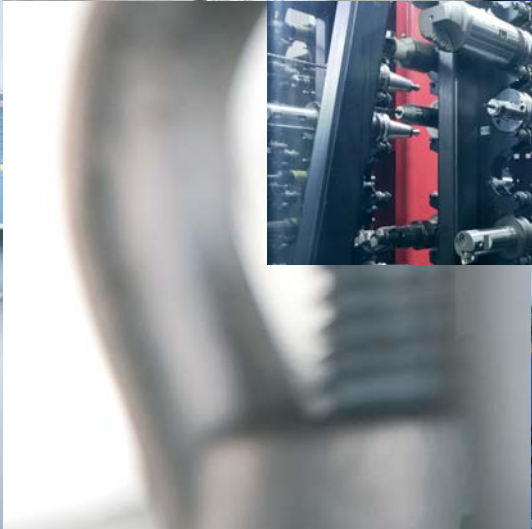
Be like a cup at a fountain which first collects the water in itself and, overflowing, passes it on to others.

Bernhard von Clairvaux

The many possibilities water offers is our passion. This is the reason why our ideas and achievements have become incorporated into our service. Our goal is availability and supply unlimited by space and time. We offer you worldwide:

- Reliable, 24 hour service for consultation, maintenance work and repairs.
- Spare parts service, from advice to prompt delivery.
- Inexpensive rental service for fast, short-term supply of additional high-pressure technology.

Should you wish to utilize our expertise within the framework of trainings or seminars, we will be happy to be of service to you, either at our headquarters or at your locations.





Water as a tool



WOMA[®] GmbH

Werthausen Str. 77-79, 47226 Duisburg, Germany

Phone: +49 2065 304-0, Fax: +49 2065 304-200

info@woma.de, www.woma.de