



makes a difference



FAST. SAFE. CLEAN.

PROFESSIONAL | MECHANICAL ENGINEERING





The best system for cleaning: Kärcher.

Production can only run smoothly when every part interlocks perfectly. The same applies to cleaning processes: efficient cleaning can only be achieved if all solutions harmonise with one another. This is why Kärcher, as a system provider in all sectors, offers effective, safe, strong and customised cleaning solutions. From surface cleaning to deep cleaning. For your systems, your warehouses and your offices. So that everything continues to run smoothly.



1 Partner for machine manufacturers

Kärcher is your partner for tailor-made solutions. Put your trust in quality, efficiency and service.

Page 4

2 Production systems

Quickly clean. With cleaning solutions during production: industrial vacuums, ice blasters, high-pressure cleaners.

Page 6

3 Production sites

Increased safety through cleanliness: clean floors at the production site with wet and dry vacuum cleaners, scrubbers/scrubber driers, sweepers.

Page 8

4 Storage and outside areas

Whether in warehouses or outside areas: Kärcher has efficient solutions with high area coverage for fast and effective cleaning.

Page 10

Kärcher – your reliable partner.

Cleaning couldn't be more thorough. In the machine manufacturing industry, it is important to find a cleaning partner which has a solution for every challenge and takes care of every little detail. Not just with equipment, but also with service and quality. Everything has to fit – as with the system provider Kärcher. An experienced partner you can rely on for all industrial cleaning tasks.



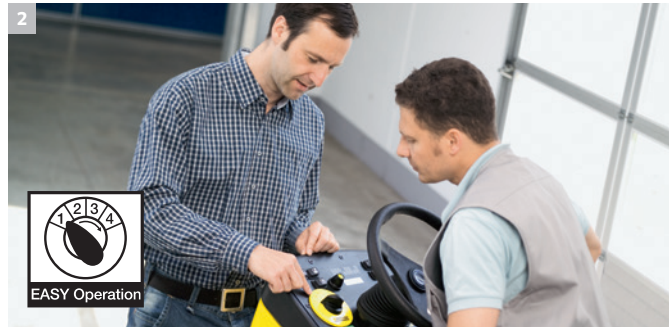
A perfect service is another part of perfect industrial cleaning, around the clock and around the world. As the world's largest manufacturer of cleaning machines, Kärcher serves its customers all around the world at more than 50,000 service and sales points.

With sound advice and fast service. Through our professional hotline or directly at your production site. Whether you require application advice, assistance, spare parts or a fast repair.



1 You can count on us

Your advantages in the long term: Kärcher develops cleaning solutions that are robust and designed to last. All products are subject to intensive quality controls to ensure that they meet all requirements, from office cleaning to stubborn dirt in production areas.



2 Easy to use

Nothing is more time-consuming than complicated machines. Kärcher avoids elaborate operation to ensure trouble-free cleaning without shut-downs. For example, with EASY Operation, all functions can be controlled simply with just one dial. This makes employees happy, saves time and increases efficiency.

3 Precisely coordinated

If everything fits together, it's Kärcher. As a system provider, Kärcher offers more than just innovative technology – effective cleaning agents and matching accessories round off the offer. The benefits for you: everything is perfectly coordinated so that you can work even more efficiently.

This is where cleanliness is produced.

In production systems, cleaning not only ensures cleanliness and process safety, but also serves to maintain machines and contributes to value retention. Every type of dirt has to be quickly and effectively removed – from swarf to grease and oils and emulsions – without interrupting the production process and always with the highest degree of safety. All of these requirements are met by the innovative cleaning solutions from Kärcher.



With water

Remove oils and emulsions with high pressure: effective high-pressure cleaners for mobile application or stationary in multiple lance operation.



With air

Industrial vacuums safely pick up swarf and liquids; from mobile compact machines to stationary systems with large capacity.



With ice

Without water and without corrosion. Dry ice cleaners clean your production facilities while offering complete material protection.



1 Gentle cleaning

Don't worry about your machines – innovative ice blasting helps to remove dirt from surfaces gently. Silicone, oil, grease, glues, dyes, paints, and much more can be removed quickly and easily with dry ice pellets, with only short downtimes thanks to Cleaning in Process (CIP).

2 Cleanliness without interruption

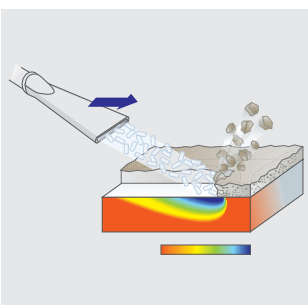
Powerfully remove moist and dry dirt: Kärcher industrial vacuums. Flexible and versatile thanks to specially coordinated, robust and wear-resistant suction lances. The latest turbine technologies ensure consistently high cleaning power.

3 Working with pressurised steam

Stubborn and adhering dirt on the production facilities is reliably removed with Kärcher steam cleaners and steam vacuum cleaners. Adhesives, crusting, or adhering oils are quickly removed.

4 Making everything clean

There is no room for compromise when cleaning parts. Intensive cleaning is carried out with solvent-free, water-based cleaning agents that effortlessly remove grease, oils, and other stains. The use of the correct cleaning agents allows components to be cleaned gently.



Ice blasting

Innovative spray process, in which dry ice pellets (consolidated CO₂ snow) is used as a spray medium.



Explosion protection

Combustible dusts of different explosion classes and health-endangering dusts, class M, are reliably removed.



Safety

Well-protected suction hoses for sharp-edged dirt and swarf. Electrically conductive and smooth inside. Approved for use in ATEX zone-22 atmospheres.



Automated

Robust and high quality made entirely of stainless steel with a 3D nozzle system for thorough all-round cleaning.

Clean systems for clean work.

Easily remove production residues, rubber wear, oils, sharp-edged swarf or transport dirt with innovative Kärcher cleaning machines. The right solution for every need: from compact wet and dry vacuum cleaners to ride-on scrubber driers that leave floors clean and dry and avoids process interruptions. A wide range of accessories increases the flexibility and ensures efficient cleaning.



Scrubber driers

Adhesive floor stains such as rubber wear are removed without residue with manually operated, ride-on or step-on scrubber driers.



Vacuum sweepers

Economical, clean, and efficient on all surfaces. Thanks to the wide range of models, Kärcher sweeper vacuums meet any requirement.



Wet and dry vacuuming

Indispensable: our industrial vacuums effortlessly pick up all kinds of dirt. Whether dry, wet or liquid – Kärcher machines pick up everything.



Liquid and swarf vacuums

Specialised industrial vacuums for vacuuming metal shavings with coolants or oils.



1 Removing vehicle track marks

Reliably remove adhesive stains, oils or other liquids in production halls with scrubber driers. This ensures increased safety, because robust Kärcher machines clean and vacuum simultaneously. So paths are quickly clean, free and ready for use.



2 Swarf and liquid vacuums

Whether with coolants, emulsions, oil or water, with or without swarf – the powerful liquid and swarf vacuums with various drive types are ideal for continuous heavy-duty industrial use.



3 Various accessories for the metal industry

The high-quality materials used in Kärcher's accessories make them ideally suited to vacuuming sharp-edged metal shavings. There is a wide selection of hoses, nozzles and suction pipes available.



Battery operation

High-performance, battery-operated devices allow extremely long work intervals.



Easy maintenance

The filter can be replaced easily.



Complete swarf basket

For all IV 60 and IV 100 industrial vacuum cleaners, for use with a wet container.

Cleaning quality is another element of high-quality storage.

When material has to be transported safely, cleanliness is vital. Because dirt is a stumbling block in routine operations. Residues can be removed quickly with robust Kärcher walk-behind or ride-on sweepers and scrubber driers. Compact dimensions ensure manoeuvrability – and numerous variants and accessories are available, from gas-operated drive to a canopy.



For vacuuming

With Kärcher industrial vacuums you can master every challenge: from compact vacuums for mobile use to superior class large-capacity vacuums.



For sweeping

Kärcher manual and powered walk-behind sweepers are ergonomic, easy to use and sweep meticulously – even in corners.



For larger areas

Ride-on sweepers offer very large area performance. And thanks to four different power variants, there is one for every cleaning task.



1 Safe in the indoor storage area

Safe cleaning in narrow aisles and between high-bay racking – not a problem for Kärcher. Compact dimensions ensure high manoeuvrability and canopies with Roll Over Protective Structure (ROPS) and Falling Object Protective Structure (FOPS) provide the necessary safety. In addition, area performances of up to 7,800 m²/h and large battery capacities ensure longer work intervals.



2 Powerful in outside areas

On large areas, cleanliness is essential for safety. Continuous material handling and environmental influences demand fast and effective cleaning solutions. With Kärcher ride-on units and the wide variety of accessories, large outdoor surfaces are easy to clean, without interrupting regulated processes.



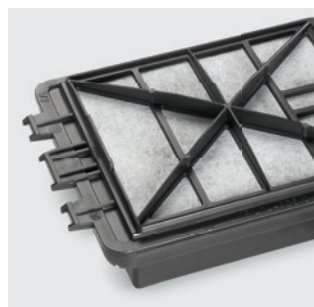
3 Economical in use

See how cost-effective cleaning can be. Area size, volume and cleaning frequency are decisive. Kärcher is happy to help you determine the best possible options for you.



Side brush

Makes work close to edges possible while increasing the area coverage of Kärcher sweepers.



Clean air

The intelligent HEPA filters reliably retain allergens. This ensures clean exhaust air and storage rooms that remain fresh.

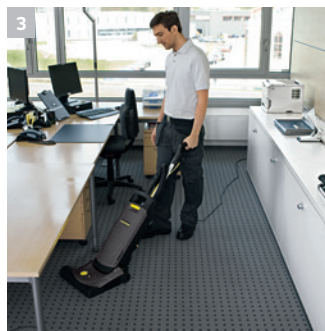


Powerful filter system

Flat pleated filter with 7 m² filter surface. A dual scraper ensures effective filter cleaning. Optional: high-performance round filter for high dust formation requirements.

All you need for a clean impression.

Kärcher offers the perfect office cleaning solution: from in-depth cleaning to polishing, we offer the perfect solution for every requirement and every area size. Kärcher machines are easy to use, whisper quiet, safe and powerful. A wide range of accessories extend the range of applications.



1 Mobile cleaners

Easy to use, robust and powerful carpet cleaners feature an extensive range of accessories for numerous tasks.

2 Dry vacuuming like a professional

Developed with contract cleaners, this professional series offers the benefits of high suction power and a five-stage filter system.

3 Removes dirt deep in the pile

Ideal for passageways and offices with carpet: deep cleaning with Kärcher upright vacuum cleaners.

4 For cleaning small areas

The BR 30/4 C cleans and dries all small hard surfaces gently and effectively. And is just as efficient in a forwards or reverse direction.



Upright vacuum cleaners

Powerful suction combined with an electric brush. Effortlessly removes stubborn dirt particles.



Carpet cleaners

Optimal cleaning results on textile surfaces - in offices, corridors, conference rooms, etc. The right solution for all areas.



Dry vacuum cleaners

Compact and extremely quiet: small, mobile dry vacuum cleaners combine convenience, powerful suction and a large working radius.



Spray extraction cleaner

Ideal for thoroughly cleaning all textile surfaces by spray extraction - powerful and versatile.

Adapted for the best cleaning results.

Save costs, protect the environment and clean more efficiently. Kärcher also develops specially adapted cleaning agents that are compatible with its innovative machines. They are highly efficient and help make your work easier and faster. They guarantee a powerful cleaning action with low consumption. This avoids unnecessary costs and protects the environment through fewer contaminants.



1 Versatility for industrial applications

Fast-acting, gentle cleaning agents which also remove stubborn dirt such as oils, grease and rust.

2 Offices and business premises

Universal cleaning agents from Kärcher with pleasant fragrances, which are not harmful to health and which loosen stubborn stains on carpets, for example oils.

3 Universal and versatile

Kärcher cleaning agents are compatible with all Kärcher parts cleaners and advanced industrial applications.



Active cleaner, alkaline, RM 81 ASF eco!efficiency

Active, gentle high-pressure cleaner concentrate for removing stubborn stains.



Oil and grease cleaner EXTRA RM 31 ASF eco!efficiency

Highly concentrated high-pressure deep cleaner.



Floor deep cleaner RM 69 ASF eco!efficiency

Powerful cleaning agent for floors and industrial floors.

The right product for every job.

<p>Cleaning machines</p> <p>Application</p>	<p>Dry ice cleaning, high-pressure cleaners and steam cleaners</p> 	<p>Industrial, wet/dry and dry vacuum cleaners</p> 
<p>Cleaning in the production process</p> 	<p>IB 7/40 Classic / Advanced IB 15/120 HDC Classic / Standard / Advanced HDS 12/18-4 S / SX HDS 8/18-4 C HD 13/12-4 ST HD 9/20-4 M HD 7/16-4 ST HD 9/18-4 ST HD 10/23-4 SX Plus HD 13/18-4 S Plus HD 13/18-4 SX Plus HD 10/23-4 S HD 10/25-4 S SGV 8/5 Accessories: Easy / Inno foam kit, FRV 30, FR 30, FR 50</p>	<p>ATEX zone 22: IVC 60/12-1 Ec H Z22 IV 60/27-1 M B1 IV 60/30 M B1 IV 100/40 M B1 IV 100/55 M B1 IV 100/75 M B1 NT 75/1 Me Ec H Z22</p> <p>Dust class H (hazardous dusts): IV 100/55 H B1 IVC 60/12-1 Ec H Z22 NT 35/1 Tact Te H NT 45/1 Tact Te H NT 75/1 Tact Me Te H</p> <p>Liquids (coolants/lubricants/swarf): IVL 50/24-2 IVL 120/27-1 IVL 120/30</p> <p>Wet and coarse dirt: NT 27/1 Adv NT 27/1 Me Adv NT 48/1 NT 70/1 NT 70/2 / Tc NT 70/3 / Me Tc IVC 60/24-2 Ap IVC 60/30 Ap IV 60/24-2 W</p> <p>IV 60/36-3 W IV 60/30 IV 100/40 IV 100/55 IV 100/75</p> <p>Fine dust: NT 35/1 Ap NT 65/2 Ap NT 35/1 Tact / Tact Te NT 45/1 Tact / Tact Te NT 55/1 Tact / Tact Te</p> <p>Large quantities of very fine dust: IVC 60/24-2 Tact² / Tact² M IVC 60/30 Tact² NT 65/2 Tact² / Tact² Tc NT 75/2 Tact² Me</p> <p>Continuous operation (one phase): IVC 60/12-1 Tact Ec IVL 120/27-1 IV 60/27-1 M B1</p> <p>Continuous operation (three phases): IVC 60/30 / Ap / Tact² / M B1 IV 100/40 / M B1 IV 100/55 / M B1 / H B1 IV 100/75 / M B1 All IVL 120 and IV 100</p>
<p>Cleaning in areas close to production</p> 	<p>HDC Classic / Standard / Advanced HDS 12/18-4 S / SX HDS 8/18-4 C HD 13/12-4 ST HD 9/20-4 M HD 7/16-4 ST HD 9/18-4 ST HD 10/25-4 S Accessories: Easy / Inno foam kit, FRV 30, FR 30, FR 50</p>	<p>NT 27/1 Adv NT 35/1 Ap NT 65/2 Ap NT 55/1 Tact NT 75/2 Tact² Me Tc NT 70/2 Me Tc</p> <p>T 17/1</p>
<p>Cleaning in production support Exterior cleaning</p> 	<p>HD 13/12-4 ST HD 9/20-4 M HD 7/16-4 ST HD 9/18-4 ST HD 10/25-4 S HDS 12/18-4 S / SX Accessories: Easy / Inno foam kit, FR 30, FR 50</p>	<p>NT 27/1 Adv NT 35/1 Ap NT 65/2 Ap NT 55/1 Tact NT 75/2 Tact² Me Tc NT 70/2 Me Tc</p> <p>T 17/1</p>
<p>Cleaning office areas</p> 		<p>T 7/1 T 10/1 T 12/1 CV 38/2 Puzzi 8/1 Puzzi 10/1 Puzzi 30/4 AB 20 PWS</p>

Floor cleaning machines



Sweepers



Parts cleaners



Cleaning agents



		<p>PC 100 M2 Bio PC 60/130 T</p>	<p>HD/HDS: RM 31 RM 36 RM 55 RM 81 RM 110 RM 111 RM 750 RM 751</p> <p>PC: PC Bio 10 PC Bio 20 Microbe suspension RM 39 RM 63</p>
<p>BD 17/5 C BDS 43/180 C BR 30/4 C BR 35/12 C BRS 40/1000 C BR 40/10 C BR 40/25 C B 40 C / W B 60 W BD 80/120 B 90 R B 150 R B 250 R / R I</p>	<p>KM 70/20 C KM 70/30 C KM 75/40 W KM 90/60 R KM 105/100 R KM 105/110 R</p>		<p>HD/HDS: RM 31 RM 55 RM 81 RM 110 RM 111 RM 750 RM 751</p> <p>BR/BD: RM 69 RM 755 ES RM 750 RM 776</p>
<p>BD 80/120 B 90 R B 150 R B 250 R / R I</p>	<p>KM 70/20 C KM 70/30 C KM 75/40 W KM 90/60 R KM 100/100 R KM 105/100 R KM 105/110 R KM 120/150 R KM 130/300 R KM 150/500 R KM 170/600 R</p> <p>MC 50</p>		<p>HD/HDS: RM 55 RM 110 RM 111 RM 750 RM 751</p> <p>RM sprayer: RM 776</p> <p>BR/BD: RM 69 RM 755 ES RM 750</p>
<p>BR 30/4 C BR 40/10 C BRC 30/15 C BR 35/12 C BRC 45/45 C</p>	<p>KM 35/5 C KM 75/40 W + carpet sweeping kit</p>		<p>BR/BD: RM 730 RM 743 RM 746 RM 748 RM 752 RM 754 RM 780</p> <p>Manual cleaning: RM 740 RM 769 RM 781 CA 10 C / extra CA 20 C / R CA 30 C / R CA 40 R CA 50 C</p> <p>BRC/Puzzi: RM 760 RM 768 iCapsol</p>

Technical data at a glance.

Cold water high-pressure cleaners					
	Power supply (phases)	Power rating (kW)	Flow rate (l/h)	Max. pressure (bar/MPa)	Working pressure (bar/MPa)
HD middle class					
HD 9/20-4 M / M Plus / MX Plus	3	7	460-900	220/22	40-200/4-20
HD super class					
HD 10/23-4 S / S Plus / SX Plus	3	7.8	1000	253/25.3	230/23
HD 10/25-4 S / S Plus / SX Plus	3	9.2	500-1000	275/27.5	30-250/3-25
HD 13/18-4 S Plus / SX Plus	3	9.2	650-1300	198/19.8	30-180/3-18

Hot water high-pressure cleaners					
	Power supply (phases)	Power rating (kW)	Flow rate (l/h)	Working pressure (bar/MPa)	Max. temperature (°C)
HDS compact class					
HDS 8/18-4 C	3	6	300-800	30-180/3-18	80/155
HDS super class					
HDS 12/18-4 S / SX	3	8.4	600-1200	30-180/3-18	80/155

Stationary high-pressure cleaners					
	Power supply (phases)	Power rating (kW)	Flow rate (l/h)	Max. pressure (bar/MPa)	Working pressure (bar/MPa)
Stationary cold water high-pressure cleaners 70/85 °C					
HD 7/16-4 ST	3	4.4	300-700	190/19	30-160/3-16
HD 9/18-4 ST	3	6.4	460-900	210/21	40-180/3-18
HD 13/12-4 ST	3	6.4	650-1300	150/15	30-120/3-12

	Max. pressure (bar/MPa)	Flow rate (l/h)	Number of pumps	Max. supply temperature (°C)	Power rating (kW)
Stationary high-pressure cleaners (industrial) Multiple lance systems					
HDC Classic	160/16 / 80/8	700-2000	1	85 / 60	5.5-11
HDC Standard	160/16 / 80/8	700-8000	2-4	85 / 60	12-46
HDC Advanced	100/10	700-12000	2-4	85 / 60	22-46 - FU

Dry ice cleaning				
	Air pressure (bar/MPa)	Dry ice consumption (kg/h)	Air flow (m³/min)	Dry ice capacity (kg)
Dry ice cleaning				
IB 7/40 Classic	2-10 / 0.2-1	15-50	0.5-3.5	15
IB 7/40 Advanced	2-10 / 0.2-1	15-50	0.5-3.5	15
IB 15/120	2-16 / 0.2-1.6	30-120	2-12	40

Steam cleaners and steam vacuum cleaners				
	Voltage (V)	Heating output (W)	Steam pressure (bar)	Tank capacity (l)
Steam cleaners and steam vacuum cleaners				
SGV 6/5 / SGV 8/5	220-240	3000	6 / 8	5

Industrial vacuums					
	Air flow rate (l/s)	Vacuum (kPa)	Container capacity (l)	Filter area (m²)	Nominal diameter ID
Industrial vacuums					
IVC 60/24-2 Tact²	2 × 74	25.4	60	0.95	42/52
IVC 60/24-2 Tact² M	2 × 74	25.4	60	0.95	42/52
IVC 60/24-2 Ap	2 × 74	25.4	60	0.95	42/52/72
IVC 60/30 Tact²	68	28.6	60	1.9	42/52
IVC 60/30 Ap	68	28.6	60	1.9	42/52/72
IVC 60/12-1 Tact Ec	62.5	24.4	60	0.95	42
IVC 60/12-1 Ec H Z22	62.5	24.4	60	0.95	42
IV 60/24-2 W	2 × 56	23.5	60	2.3	51
IV 60/30	68	28.6	60	2.3	51
IV 60/36-3 W	3 × 56	23.5	60	2.3	51
IV 60/27-1 M B1	65	24	60	2.3	51
IV 60/30 M B1	68	28.6	60	2.3	51
IV 100/40	139	18	100	2.3	61
IV 100/55	139	28	100	2.3	61
IV 100/75	153	33	100	4.3	61
IV 100/40 M B1	139	18	100	2.3	61
IV 100/55 M B1	139	28	100	2.3	61
IV 100/55 H B1	139	28	100	2.3	61
IV 100/75 M B1	153	33	100	4.3	61
IVL 50/24-2	2 × 56	23.5	50/38	-	51
IVL 120/27-1	65	24.5	120/39	-	51
IVL 120/30	68	28.6	120/39	-	51

Wet and dry vacuum cleaners				
	Air flow rate (l/s)	Vacuum (mbar/kPa)	Max. power rating (W)	Sound level (dB(A))
Standard class				
NT 27/1 / Adv	67	200/20	1380	72
NT 27/1 Me / Me Adv	67	200/20	1380	72
NT 48/1 / Te	67	200/20	1380	72
NT 70/1	56	208/20.8	1200	73
NT 70/2 / Me / Adv	2 × 56	208/20.8	2400	75
NT 70/2 Tc / Me Tc	2 × 56	208/20.8	2400	75
NT 70/3 / Tc / Me Tc	3 × 56	208/20.8	3600	79
Ap class				
NT 35/1 Ap	61	230/23	1380	67
NT 65/2 Ap	2 × 74	254/25.4	2760	73
Tact class				
NT 35/1 Tact / Tact Te	61	230/23	1380	67
NT 45/1 Tact / Tact Te	61	230/23	1380	64/67
NT 55/1 Tact / Tact Te	61	230/23	1380	67
NT 35/1 Tact Te H	61	230/23	1000	67
NT 45/1 Tact Te H	61	230/23	1000	67
NT 75/1 Tact Me Te H	61	230/23	1000	67
NT 65/2 Tact² / Tact² Tc	2 × 74	254/25.4	2760	73
NT 75/2 Tact² Me / Me Tc	2 × 74	254/25.4	2760	73
Special vacuum				
NT 75/1 Me Ec H Z22	62	245/24.5	1000	67

Dry vacuum cleaners

	Air flow rate (l/s)	Vacuum (mbar/kPa)	Max. power rating (W)	Sound level (dB(A))
Dry vacuum cleaners				
T 7/1	55	245/24.5	1200	65
T 10/1 / Adv	61	244/24.4	1250	63
T 12/1	61	244/24.4	1300	61
T 17/1	61	244/24.4	1300	61
T 7/1 ecoefficiency	■ 43	230/23	750	62
T 10/1 ecoefficiency	■ 43	230/23	750	60
T 12/1 ecoefficiency	■ 43	230/23	750	56
T 17/1 ecoefficiency	■ 43	230/23	750	56
Upright vacuum cleaner				
CV 38/2	48	250/25	1200	67

Carpet cleaners

	Deep/interim cleaning area performance (m²/h)	Turbine power (W)	Brush/suction working width (mm)	Fresh/dirty water tank (l)
Carpet cleaners				
Puzzi 8/1 C	■ 12-18	1200	-	8 / 7
Puzzi 10/1	■ 20-25	1250	-	10 / 9
Puzzi 10/2 Adv	■ 30-45	1250	-	10 / 9
Puzzi 30/4	■ 60-75	1200	-	30 / 15
Puzzi 30/4 E	■ 60-75	1200	-	30 / 15
PW 30/1 for Puzzi 10/2 Adv	40-55	-	-	-
PW 30/1 for Puzzi 30/4 / E	70-110	-	-	-
BRC 30/15 C	100/-	1130	270 / 315	15 / 15
BRC 45/45 C	350/1000	1100	410 / 450	45 / 38

Scrubbers/scrubber driers

	Brush/suction working width (mm)	Theoretical working capacity (m²/h)	Practical working capacity (m²/h)	Fresh/dirty water tank (l)
Stair cleaner				
BD 17/5 C	170/200 / -	-	-	-
Single-disc machine				
BDS 43/180 C Adv	432 / -	-	-	10*
Scrubber				
BRS 40/1000 C	400 / -	450	-	10*
Compact scrubber driers				
BR 30/4 C	300 / 300	200	130	4 / 4
BR 40/10 C	400 / 400	400	300	10 / 10
BR 35/12 C	■ 350 / 450	1400	1050	12 / 12
BR 40/25 C	400 / 770	1600	1100	25 / 25
Walk-behind scrubber driers				
B 40 C / W	430-550/850	1700-2200	1275-1650	40 / 40
B 60 W	510-650/850	2040-2600	1530-1950	60 / 60
BD 80/120	800 / 990	3200	2400	120 / 120
Ride-on scrubber driers				
B 90 R	550-750 / 850/940	3300-4500	2475-3375	90 / 90
B 150 R	■ 750-900 / 940-1060	4500-5400	3375-4050	150 / 150
B 250 R / R I	■ 1000/1200 / 1160/1400	6000-7200	4500/5400	250 / 250

Sweepers/vacuum sweepers

	Working width without/with 1/with 2/with 3 side brushes (mm)	Waste container (l)	Max. area coverage with 1/2 side brushes (m²/h)	Indoor use	Outdoor use
Walk-behind sweepers					
KM 35/5 C	350/-/-/-	5	1480/-	■	■
KM 70/20 C	480/700/-/-	42	2800/-	■	■
KM 70/20 C 2SB	480/700/920/-	42	3680/-	■	■
KM 70/30 C Bp Pack Adv	480/700/-/-	42	2800/-	■	■
Vacuum sweepers					
KM 75/40 W Bp Pack	550/750/-/-	40	3375/-	■	■
KM 75/40 W G	550/750/-/-	40	3375/-	-	■
Ride-on vacuum sweepers					
KM 90/60 R Bp Adv	■ 615/900/1150/-	60	5400/6900	■	■
KM 90/60 R Bp Pack Adv	■ 615/900/1150/-	60	5400/6900	■	■
KM 90/60 R Lpg Adv	■ 615/900/1150/-	60	7200/9200	■	■
KM 100/100 R Bp	700/1000/1300/-	100	6000/7800	■	■
KM 100/100 R Bp Pack	700/1000/1300/-	100	6000/7800	■	■
KM 100/100 R Lpg	700/1000/1300/-	100	8000/10400	■	■
KM 105/100 R Bp	■ 640/1050/1400/-	100	6300/8400	■	■
KM 105/100 R Lpg	■ 640/1050/1400/-	100	7350/9800	■	■
KM 105/110 R Bp	■ 640/1050/1400/-	110	6300/8400	■	■
KM 105/110 R Lpg	■ 640/1050/1400/-	110	7350/9800	■	■
KM 120/150 R Lpg	850/1200/-/-	150	9600/11600	■	■
KM 120/150 R Lpg 2SB	850/1200/1450/-	150	-/11600	■	■
KM 120/150 R Bp	850/1200/1450/-	150	7200/8700	■	■
KM 120/150 R Bp 2SB	850/1200/1450/-	150	-/8700	■	■
KM 120/150 R Bp Pack	850/1200/-/-	150	7200/8700	■	■
KM 120/150 R Bp Pack 2SB	850/1200/1450/-	150	-/8700	■	■
KM 130/300 R Bp	1000/1300/1550/-	300	9100/10850	■	■
KM 130/300 R Bp Pack	■ 1000/1300/1550/-	300	9100/10850	■	■
KM 130/300 R D	1000/1300/1550/-	300	13000/15500	-	■
KM 130/300 R Lpg	1000/1300/1550/-	300	13000/15500	■	■
KM 150/500 R Bp	1200/1500/1800/2200	500	12000/14400	■	■
KM 150/500 R Bp Pack	■ 1200/1500/1800/2200	500	12000/14400	■	■
KM 150/500 R D / D 4W	1200/1500/1800/2200	500	18000/21600	-	■
KM 150/500 R Lpg	1200/1500/1800/2200	500	18000/21600	■	■
KM 170/600 R D	1350/1680/2000/2400	600	23520/28000	-	■
KM 170/600 R Lpg	1350/1680/2000/2400	600	23520/28000	■	■

Multi-function sweeper/snow mover/gritter/mower

	Power (kW)	Speed (km/h)	Variable sweeping width (mm)	Deposit capacity (l)	Air-conditioner
Multi-function sweeper/snow mover/gritter/mower					
MC 50 Adv / Adv Comfort	19.2	20	1100-1400	500	- / ■

Parts cleaning

	Flow rate (l/h)	Working area/diameter (mm)	Max. temperature (°C)	Load capacity (kg)	Power rating (kW)
Parts cleaners					
PC 100 M2 Bio	900	1041 × 660	40	100	1
PC 60/130 T	4500	600	80	130	5.5

■ NEW ■ Included in delivery *Optional

eco!efficiency: Achieve more with efficiency.

If you want to move and change things, you have to point the way. And show your colours. The blue symbols representing the various building blocks of Kärcher eco!efficiency show at a glance how and where Kärcher's power of innovation achieves measurably greater and better efficiency for customers, products and the environment. Kärcher eco!efficiency is implemented in all business areas and is an integral part of corporate policies and actions.



Measurable time saving

The simple equation of time equals money is still valid, however multiplied by the efficiency factor. More efficient machines that allow work to be carried out more quickly lead to significant labour cost savings and genuine competitive advantages.



High recyclability

Raw materials that cannot be avoided from the beginning must be recyclable as far as possible after a long machine life. Kärcher machines are currently more than 90% recyclable.



Reduced water consumption

Drinking water is precious and conserving it protects natural resources and saves energy for processing, transport and disposal. Many Kärcher high pressure cleaners and scrubber driers already meet the eco!efficiency standard or feature an eco!efficiency mode, which efficiently regulates the amount of water depending on the cleaning task.



Less noise

Noise is not just unpleasant, it has shown to be damaging to health. Kärcher counters working noise both in its own production processes and for users by reducing noise levels and power to an optimum level. An example of this is the T 12/1 eco!efficiency dry vacuum cleaner. Its working noise level has been reduced by 5 dB(A) compared to the basic model, making it over 50% quieter. Furthermore, the low frequency of the work noise is subjectively perceived as being very pleasant. As a result, the T 12/1 eco!efficiency is also outstandingly suitable for longer work intervals and noise-sensitive areas.



Intelligent energy efficiency

Everything has its limits. Sometimes more power does not make sense. The T 12/1 eco!efficiency dry vacuum cleaner proves that less can be more. Its 750 W motor uses 40% less electricity, achieving 98% of the cleaning performance of the standard model thanks to flow-optimised suction channels, which is more than sufficient for maintenance cleaning.



Exemplary reparability

As early as the development phase, Kärcher machines are designed for reparability: as few components and assemblies as possible, the best possible accessibility and as many standard parts as possible.



Materials to suit the job

The selection of optimal materials is a never-ending challenge. New materials and production processes open up new opportunities in manufacturing and the use of machines, accessories and consumables. Lightweight design, durability, avoidance of contaminants, recyclability and costs – standards that Kärcher takes into account in the manufacture of efficient and eco-friendly products.



Reduced CO₂ emissions

Reducing CO₂ greenhouse gas emissions is a global objective. To reduce its CO₂ footprint, Kärcher is making its contribution on all levels of production and in all business areas: through optimised use of materials, energy and water, high recyclability, as well as self-generated renewable energy.



Optimised company processes

Kärcher ecoefficiency simply means continuously trimming all processes in the company to achieve maximum efficiency. This results in constant optimisation in all areas.



Less waste water pollution

It is as easy as it sounds: water that has not been used, does not need to be disposed of. At the same time, dirty water should be concentrated in order to make work easier for sewage treatment plants. The Kärcher system, consisting of the device, accessories and cleaning agents is fine-tuned to achieve maximum effect with minimum effort.



Extended service life

The robust construction style and high strength are the key prerequisites for a long usage phase. High quality, reparability and a long-term spare parts supply ensure that Kärcher Professional machines give years of reliable service.



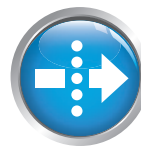
Precisely dosed cleaning agent

The most environmentally friendly and economical cleaning agent is that which is not used. Kärcher DOSE technology enables exact dosage of cleaning agents and, as a result, achieves a much lower level of consumption.



Reduced use of materials

If there is one art that is efficient, it is the art of reduction. Less material consumption through optimised designs is one aspect. Another is reducing the number of components. On average, Kärcher machines consist of significantly fewer components than comparable competitor models. The resulting lighter weight not only saves driving energy, it also saves a serious amount of raw materials and energy in manufacture.



Effective dust filtering

Dust is a nuisance to people and the environment and can be detrimental to health and the environment. Kärcher vacuums feature efficient filter systems with innovative components, e.g. Tact and Tact² systems for fully automatic filter cleaning as well as HEPA filters for hygienically clean, particle-free exhaust air. Fleece filter bags with a better degree of separation, double the retention capacity and a longer service life compared to paper filter bags. And last, but not least, certified safety vacuum cleaners for critical applications.

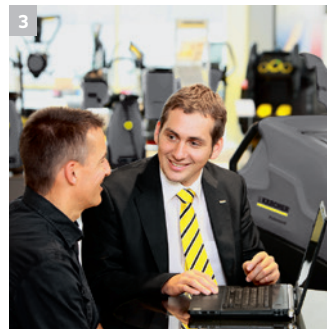
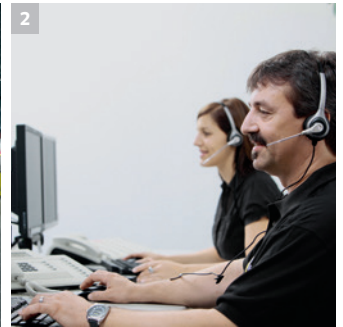


Comprehensive spare parts supply

Durable investment goods can only fully develop their economical and environmental advantages if all spare parts are available until the end of their service life. Depending on the particular product, Kärcher guarantees a spare parts supply for up to 10 years after a model goes out of production.

Kärcher service – you can count on us.

If the word service is a promise and not a slip of the tongue, trust is the basis. Because you must be able to rely on your professional cleaning machines at all times. Day after day. Night after night. Everywhere. This is our aim. And we do our best to ensure this. Reliable cleaning machines and cleaning agents. Advanced technologies. Competent advice and training. And much more. Right to the point: Kärcher Service. A name you can trust. And a service that gives you security. That's our promise.



We're there for you, wherever you need us.

Kärcher stands for top performance – not just in products, but also in service. As the world's largest manufacturer of cleaning machines, we are there for our customers all around the world and at more than 50,000 service and sales points. This is how we give you peace of mind. Kärcher – your reliable partner.

1 Planning

Kärcher also provides sound advice for your detailed project and property planning. We calculate exactly which resources you need and how you can configure your machines and equipment for optimal results.

2 Hotline*

Friendly. Competent. Solution-oriented. Kärcher hotline staff are familiar with all products, accessories and cleaning agents and can provide sound advice and assistance by telephone.

3 Service contracts

Consistently high performance: with our service contracts you can be assured that your Kärcher products will operate reliably at all times, thanks to regular inspection and maintenance or an all-inclusive full service package.

4 Application advice

We provide application advice to ensure that you always have the most efficient solution. Area, staff and schedule are the decisive factors in determining the products that best suit your needs.



5 Global presence

Kärcher guarantees you personal service. Our global service and sales network ensures that you always have a competent contact partner locally, for all enquiries regarding service, advice or sales.

6 Technical training

Get the most out of your equipment: with our local technical training courses, we can show your employees how to use innovative Kärcher products to clean every type of facility optimally.

7 We come to you

Our service management system saves you time and money and ensures that we are with you as quickly as possible. With regular service calls as part of the full service package, and always whenever you need us.

8 Extended warranty

Guarantees a long service life. Our extended warranty or machinery breakdown insurance will give you peace of mind and ensure that your Kärcher products have optimal cover.

9 Leasing

Control your cash flow and remain productive with low leasing fees instead of major investments. Including a maintenance contract if required.

10 Rental machines

Stay as flexible as the market - with Kärcher rental machines you always have the equipment you really need, when you actually need it. Contact us to discuss your options.

11 Refurbished machines

Machines in top condition at very attractive terms. A new machine is not always cost-effective. Refurbished Kärcher machines are a cost-effective alternative for your project planning.

Enthusiasm. Innovation. Success.

Since its beginnings more than 75 years ago, as a value-oriented family business, Kärcher has become a world brand with three strong attributes: top performance, innovation and quality. Today, the Kärcher brand enjoys the reputation of being a global leader and resource-conserving supplier of professional cleaning systems and is synonymous with reliable products, optimal user value and ongoing commitment to the environment, culture and sport.



1 Seattle's highest building: the Space Needle

A Kärcher team pressure-washed the structure up to a height of 184 m. The job took eight weeks, working only at night.



2 A facelift for the heads of state

Clean again: In 2005 Kärcher cleaned the National Memorial on Mount Rushmore.



3 Innovative right from the start

In 1950, Kärcher developed the first hot water high-pressure cleaner in Europe for professional cleaning.



4 Clean environment

Kärcher works on environmental protection every day, with new products, technologies and investments in production facilities.

5 In-house research and development

Kärcher develops high-performance cleaning machines, accessories and special cleaning and care products.

6 Internationally represented

We are there for our customers all around the world.

7 Commitment to sports

Clean performance on the pitch. For several years, Kärcher has supported German and international football as a partner.

Please contact us for more information:

Head Office Germany

Alfred Kärcher GmbH & Co. KG
Alfred-Kärcher-Straße 28-40
71364 Winnenden

Phone +49 7195-14-0
Fax +49 7195-14-2212

www.kaercher.com

North America

Kärcher North America
750 W. Hampden Avenue
Suite 400
Englewood, CO 80110
U.S.A.

Phone +1 303-738-5805
Fax +1 303-738-2758

www.karcherna.com

United Kingdom

Kärcher (UK) Ltd.
Kärcher House
Beaumont Road
Banbury
Oxon OX16 1TB

Phone +44 1295-752-100
Fax +44 1295-752-103

www.karcher.co.uk

Ireland

Kärcher Ltd.
Unit 4
E.P. Mooney Business Park
Walkinstown Avenue
Dublin 12

Phone +353 1-409-7777
Fax +353 1-409-7775

www.karcher.ie

Southeast Asia

Regional Head Office
Southeast Asia

Kärcher South East Asia Pte. Ltd.
3 Depot Close #01-01
Singapore 109840

Phone +65 6897 18 11
Fax +65 6897 16 11

www.karcher.com.sg

Hong Kong

Kärcher Limited
Unit 05, 13/F, Nanyang Plaza
57 Hung To Road
Kwun Tong, Kowloon

Phone +852 2-357-5863
Fax +852 2-357-5632

www.karcher.com.hk

Australia

Kärcher Pty. Ltd.
40 Koornang Road
Scoresby VIC 3179
Melbourne, Victoria

Phone +61 3-9765-2300
Fax +61 3-9765-2398

www.karcher.com.au

New Zealand

Kärcher Ltd.
66 Allens Road
East Tamaki
Auckland 2013

Phone +64 9-274-4603
Fax +64 9-274-6932

www.karcher.co.nz

South Africa

Kärcher (Pty) Ltd.
Cnr. Mount Joy & George Allen Rd.
Wilbart Ext. 2
P.O. Box 11818
Vorna Valley, 1686

Phone +27 11 657 7300
Fax +27 11 657 7440

www.karcher.co.za

Dubai

Kärcher FZE
Quality Cleaning Systems
Jebel Ali Free Zone
Plot No. S-10104 South Zone
RA 08, XB 1, Jebel Ali

Phone +971 4-886-1177
Fax +971 4-886-1575

www.kaercher.com