

**KÄRCHER**

makes a difference

# **THE KÄRCHER RAIN SYSTEM® – QUICK AND EASY TO INSTALL.**

Now you are ready to go: with these helpful step-by-step assembly instructions, we will show you how to install your customised Kärcher Rain System® with ease – so you can enjoy a garden that is watered according to its needs.

# KÄRCHER RAIN SYSTEM® ASSEMBLY INSTRUCTIONS

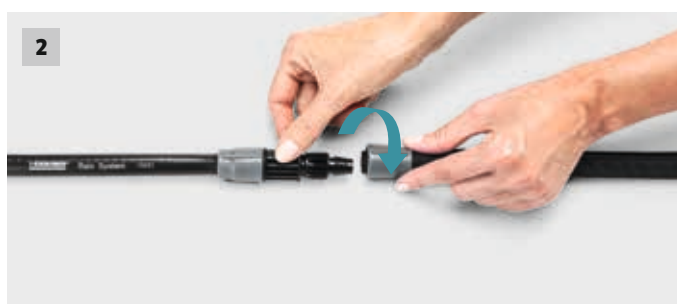
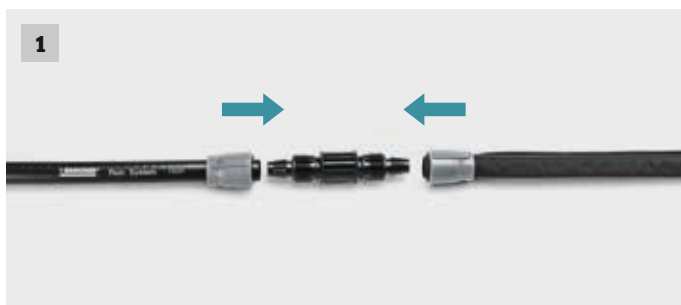
## 1. CONNECT TO THE WATER SOURCE

Using a hose connector, connect the garden hose to the water supply and lay it to the area you want to water. Then connect the input side of the filter (with a pressure reducer if necessary) to the hose connector and the output side to the Kärcher Rain System® hose. You can also connect a watering control system, such as the SensoTimer ST 6, to the tap.



## 2. LAY THE INFRASTRUCTURE

Lay the Kärcher Rain System® hose and the trickle hose along the surface you want to water, shorten both hoses where necessary and connect them to each other using T-connectors and I-connectors.

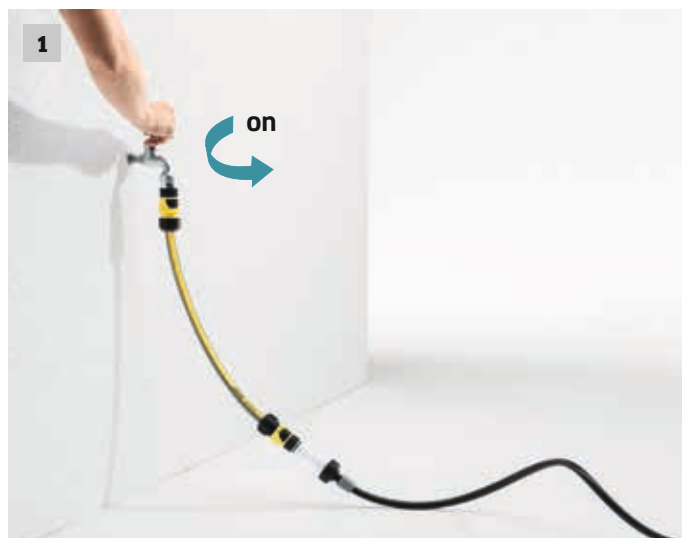


# KÄRCHER RAIN SYSTEM® ASSEMBLY INSTRUCTIONS

## 3. STRAIGHTEN OUT THE SUPPLY HOSE

Fill the laid Kärcher Rain System® hoses with water to straighten them out.

Then turn off the tap to carry out the following steps in the installation.



## 4. INSTALL DRIP NOZZLES AND MICRO SPRAY NOZZLES

Thanks to the collar with integrated needle, you can easily connect drip nozzles and/or sprayers anywhere you like along the Kärcher Rain System® hose:

1. Pierce the hose with the needle.
2. Seal the collar.



Set the water volume according to requirements by turning the nozzle head (from min./max. 0-10 l/h).

Set the water volume according to requirements by turning the nozzle head (from min./max. 0-55 l/h).

# KÄRCHER RAIN SYSTEM® ASSEMBLY INSTRUCTIONS

## 5. FIX HOSE AND MOUNT HOSE STOPS

Use hose spikes to fix the hoses in the ground and mount the hose stops to seal the hose ends.





# INSTALLATION OF ADDITIONAL PARTS

## SEALING COLLAR

Reseal the collar holes created by the drip and micro spray nozzles using sealing collars.



## PRESSURE REDUCER WITH FILTER

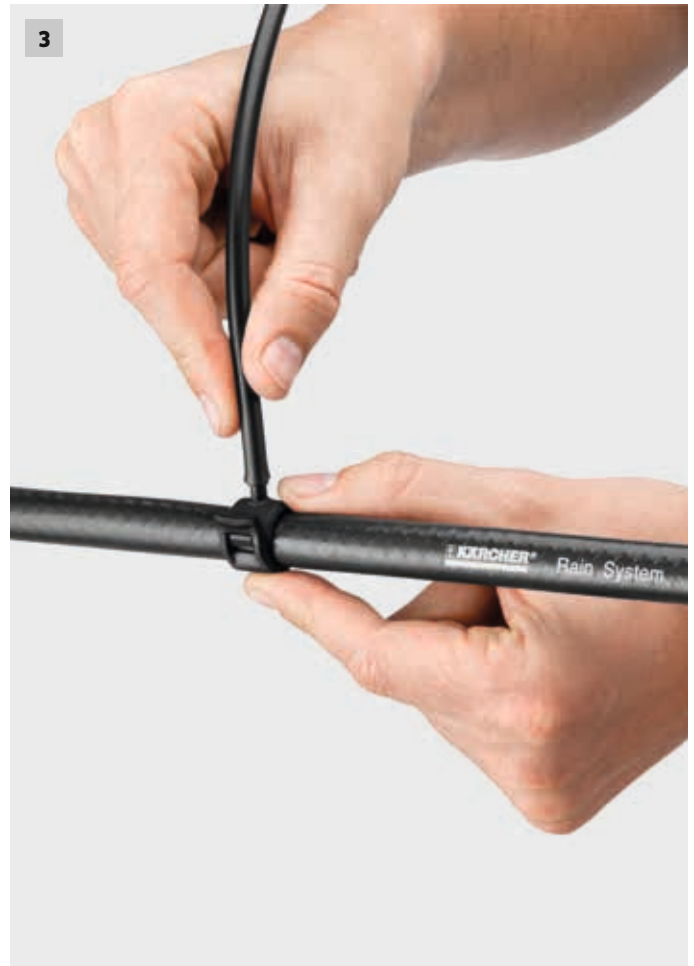
Mount the pressure reducer with the output side on the Kärcher Rain System® hose.



# INSTALLATION OF THE POT WATERING SET

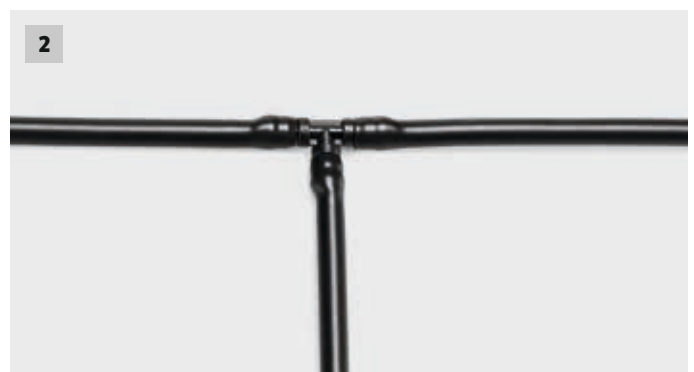
## COLLARS FOR CONNECTION HOSE

Connect the connection hose (4 mm) and the Kärcher Rain System® hose using a collar.



## T-CONNECTOR

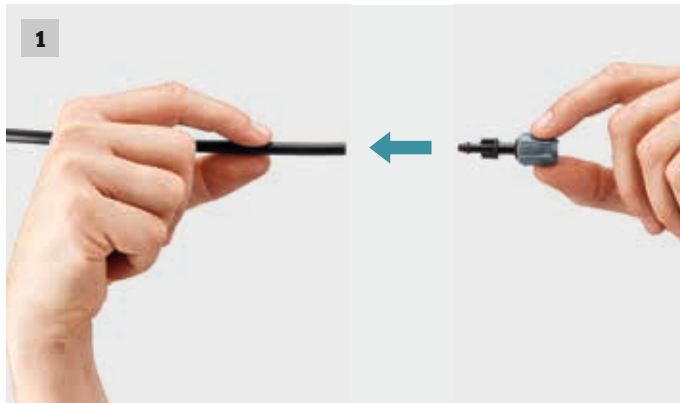
The hose ends of the connection hose can be connected to each other using the T-connector.



# INSTALLATION OF THE POT WATERING SET

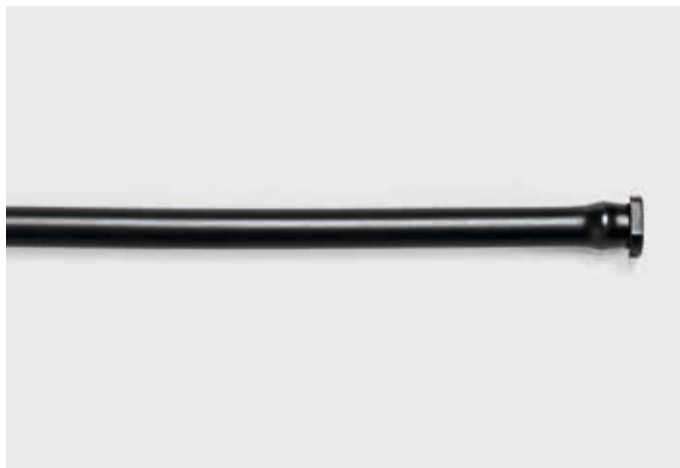
## DROPPER

Mount the dropper on the connection hose and set the water volume according to requirements by turning the nozzle head (min./max. 0-10 l/h).



## HOSE STOP

To seal the hose ends, mount the hose stop.



Questions? We are always happy to help:

**Corporate Head Office**

Alfred Kärcher GmbH & Co. KG  
Alfred-Kärcher-Straße 28-40  
71364 Winnenden, Germany

Tel. +49 7195 14-0  
Fax +49 7195 14-2212

[www.kaercher.com](http://www.kaercher.com)