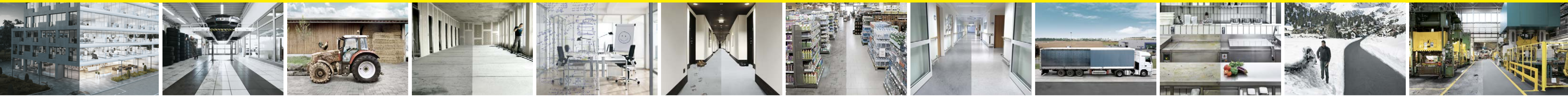


KÄRCHER PROFESSIONAL 2016



HOT WATER HIGH-PRESSURE CLEANERS

HDS super class, HDS middle class, HDS compact class, HDS upright class, HDS Trailer, HDS special class, HDS with combustion engine, Surface cleaners, Accessories

COLD WATER HIGH-PRESSURE CLEANERS

HD super class, HD middle class, HD compact class, HD portable class, HD Industrial, HD special class, HD Gasoline Advanced, HD Gasoline Classic, HD Classic

STATIONARY HIGH-PRESSURE CLEANERS

Stationary hot water high-pressure cleaners, Stationary multiple lance systems, Stationary cold water high-pressure cleaners

HIGH-PRESSURE CLEANER ACCESSORIES

HD solar panel cleaner, HD water softening, FR Classic

WET AND DRY VACUUM CLEANERS

Tact class, Ap class, Standard class, NT Classic, Safety vacuum cleaners, Special vacuums

INDUSTRIAL VACUUMS

Super class, Middle class, Compact class, Ex vacuums, Build-in units, Liquid and swarf vacuums

DRY VACUUM CLEANERS

ecoefficiency, Standard, T Classic, Battery-powered machines, Upright brush-type vacuum cleaners, Electric brooms

VACUUM CLEANER ACCESSORIES/ADDITIONS

ESB 28, PES flat pleated filter, Longopac disposal system

DRINKING WATER

Water dispenser, white, Water dispenser, black, Water treatment

CARPET CLEANERS

Spray extraction machines 30-litre class, Spray extraction machines 10-litre class, Spray extraction machines 8-litre class, Professional power brush for spray extraction machines, Air blowers, Carpet cleaners, Deep carpet cleaners - 45 cm, Deep carpet cleaner - 40 cm, Deep carpet cleaners - 30 cm

CARPET CLEANER ACCESSORIES/ADDITIONS

Puzzi floor nozzle, Air filtration device Afd, Hand nozzle

STEAM CLEANERS AND STEAM VACUUM CLEANERS

Steam cleaners, Steam vacuum cleaners, Accessories

MANUAL CLEANING EQUIPMENT

Cleaning trolleys and buckets, ECOiClean Liner Press, ECOiClean Liner, Double bucket cart with mop press, Floors, Mop systems, Sweeping, Surfaces, Microfibre cloths, Hand pad holders and covers, Windows, Window cleaning range

SCRUBBERS/SCRUBBER DRIERS

Combined 300/250-litre sweeper/scrubbing machine class, Ride-on 150-litre class, Ride-on 90-litre class, Step-on 95-litre class, Walk-behind 120-litre class, Walk-behind 80 to 60-litre class, Walk-behind 40-litre class, Compact 50 to 25-litre class, Compact 12-litre class, Compact 10-litre class, Compact 4-litre class, Mopvac 10-litre class, Single-disc machines, Escalator cleaner, Polishing machines - compact class

SWEEPERS/VACUUM SWEEPERS

Ride-on industry class, Ride-on middle class, Ride-on entry-level class, Walk-behind super class, Walk-behind middle class, Walk-behind compact class, Walk-behind entry-level class, High-performance electric broom, Snow throwers

VACUUM SWEEPERS AND MUNICIPAL IMPLEMENT CARRIERS

Vacuum sweepers middle class, Vacuum sweepers - compact class, Light waste vacuum cleaners, Municipal implement carriers - heavy implement carriers, Municipal implement carriers - middle class, Municipal implement carriers - compact class, Municipal implement carriers - compact class

PARK & CITY SOLUTIONS

Leaf blowers, Batteries, Chainsaws

VEHICLE CLEANING

Gantry car washes, Commercial vehicle washing bays, Single-brush commercial vehicle washes, Self-service vacuums, Self-service prewash units, Self-service single bay units, Self-service multi bay units 2-4 bays, Steel framework for self-service wash bays, Self-service multi bay units 4-8 bays

SYSTEM SOLUTION FOR CONTAINER CLEANING

System solution tank, silo and container cleaning, Modular controls, Modular industrial pumps, Modular interior cleaning heads, Mobile and stationary high-pressure pumps, Modular hot water generators, Ultra-high-pressure interior cleaning heads, Complete tank interior cleaning system

WATER RECLAMATION

Water reclamation for car wash stations, Water reclamation for high-pressure cleaners, Water reclamation system for high-pressure cleaners

DRY ICE CLEANING

Super class, Compact class, Dry ice pelletizers

PARTS CLEANING

Biological parts cleaning, Automatic parts cleaning

WORK PROTECTION

Safety goggles and protective gloves, Hearing and head protection, Work protection suits

KÄRCHER SYSTEM

Solutions, not just products: the Kärcher system. Professional operators place the highest demands on reliability, cleaning power and efficiency, which is only achievable with a perfectly balanced system.

DIGITAL SOLUTIONS

Kärcher Fleet Fleet management, Kärcher ECOiManager Facility management software

SERVICES

Kärcher Services The complete range of services from the world market leader. Kärcher Service Customer service, Kärcher Rent Rental, Kärcher Maintain Service packages, Kärcher Used Refurbished machines

CLEANING AND CARE AGENTS - FOR ANY APPLICATION

PressurePro, CarpetPro, FloorPro, SurfacePro, VehiclePro, PartsPro, WaterPro, TankPro. Machine Protector Advance 1 RM 110, Active cleaner, alkaline RM 81, Solar panel cleaner RM 99, Dry cleaner RM 766, Carpet cleaner RM 760 tablets/powder, Conditioner RM 763, CarpetPro Protector RM 762, Multi cleaner RM 756, Basic cleaning agent RM 69, Intensive basic cleaning agent Extra RM 752, All-round basic cleaning agent RM 754, Manual cleaning agent line CA, Wheel rim foam RM 802, Foam cleaner RM 838, Foam Polish Plus RM 837, Parts cleaning agent PC Bio 10, Separating agent RM 846, Cleaner, acidic RM 870, Cleaner, alkaline RM 875, Cleaner, polymer RM 880

TECHNICAL DATA AT A GLANCE

HOT WATER HIGH-PRESSURE CLEANERS

		Supply voltage (phases) Connection load (kW)	Flow rate (l/h)	Working pressure (bar/MPa)	Max. temperature (°C)
HDS super class					
HDS 13/20-4 S1 SX	3	9.3	600-1300	30-200/3-20	80/155
HDS 12/18-4 S1 SX	3	8.4	600-1200	30-180/3-18	80/155
HDS middle class					
HDS 10/20/4 M1 MX	3	7.6	500-1000	30-200/3-20	80/155
HDS 9/18-4 M1 MX	3	6.4	450-900	30-180/3-18	80/155
HDS 8/18-4 M1 MX	3	5.5	400-800	30-180/3-18	80/155
HDS 7/12-4 M1 MX	1	3.4	350-700	30-120/3-12	80/155
HDS compact class					
HDS 8/18-4 C1 CX	3	6.7	300-800	30-180/3-18	80/155
HDS 8/17 C1 CX	3	5.7	290-750	30-170/3-17	80/155
HDS 7/16 C1 CX	3	4.7	270-660	30-160/3-16	80/155
HDS 6/14-4 C1 CX	1	3.6	240-560	30-140/3-14	80/155
HDS 6/14 C1 CX	1	3.6	240-560	30-140/3-14	80/155
HDS 5/12 C	1	2.9	500	120/12	80
HDS upright class					
HDS 5/15 U1 UX	1	2.7	450	150/15	80
HDS 5/13 U1 UX	1	2.6	450	125/12.5	80
HDS 5/11 U1 UX	1	2.2	450	110/11	80
HDS Trailer					
HDS 9/50 De Tr1	-	-	500-900	150-500/15-50	85/98
HDS 13/35 De Tr1	-	-	650-1300	100-350/10-35	85/98
HDS 17/20 De Tr1	-	-	900-1700	100-200/7-20	80/98
HDS 13/20 De Tr1	-	-	900-1300	50-200/5-20	85/98
HDS special class					
HDS 2000 Super	3	2 + 6.7	800-1850	30-180/3-18	80/98
HDS E 8/16-4 M1 MX 36 kW	3	4.15	300-760	30-160/3-16	58/85
HDS E 8/16-4 M1 MX 40 kW	3	29.5	300-760	30-160/3-16	45/85
HDS E 8/16-4 M1 MX 42 kW	3	17.5	300-760	30-160/3-16	30/85
HDS with combustion engine					
HDS 1000 De	-	-	450-900	40-200/4-20	80/98
HDS 1000 Bar	-	-	450-900	40-210/4-21	80/98
HDS 801 D/B	-	-	600	140/14	80

COLD WATER HIGH-PRESSURE CLEANERS

		Supply voltage (phases) Connection load (kW)	Flow rate (l/h)	Max. pressure (bar/MPa)	Working pressure (bar/MPa)
HD super class					
HD 17/14-4 Plus1 SX Plus	3	9.4	650-1700	154/15.4	30-140/3-14
HD 13/18-4 Plus1 SX Plus	3	9.2	650-1300	198/19.8	30-180/3-18
HD 10/25-4 S1 Plus SX Plus	3	9.2	500-1000	275/27.5	30-250/3-25
HD 10/25-4 S1 Plus SX Plus	3	7.8	1000	253/25.3	730/23
HD middle class					
HD 9/20-4 M1 Plus 1 MX Plus	3	7	460-900	220/22	40-200/4-20
HD 5/19 M1 Plus 1 MX Plus	3	6.8	450-890	220/22	40-185/4-18.5
HD 5/18-4 M1 Plus 1 MX Plus	3	5	290-700	215/21.5	30-180/3-18
HD 6/16-4 M1 Plus 1 MX Plus	1	3.4	230-600	190/19	30-160/3-16
HD compact class					
HD 7/18 C1 Plus 1 CX Plus	3	4.7	240-700	215/21.5	20-175/2-17.5
HD 6/15 C1 Plus 1 CX Plus	1	3.1	230-560	190/19	30-150/3-15
HD 6/12-4 C1 Plus 1 CX Plus	1	2.8	300-600	160/16	20-120/2-12
HD 5/17 C1 Plus 1 CX Plus	1	1.3	500	200/20	170/17
HD 6/13 C1 Plus 1 CX Plus	1	2.9	560	190/19	130/13
HD 5/15 C1 Plus 1 CX Plus	1	2.8	500	200/20	150/15
HD 5/12 C1 Plus 1 CX Plus	1	2.5	500	175/17.5	120/12
HD portable class					
HD 5/11 P1 P1 Plus	1	2.2	490	160/16	110/11
HD Industrial					
HD 9/50-4 Cage	3	15	500-900	640/64	150-500/15-50
HD 13/35-4 Cage	3	15	500-1300	450/45	100-300/10-35
HD 9/50 Ce Cage	-	-	500-900	640/64	150-500/15-50
HD 13/35 Ce Cage	-	-	500-1300	450/45	100-350/10-35
HD special class					
HD 20/14-4 Cage Plus	3	12.5	500-2500	190/19	30-150/3-15
HD 20/15-4 Cage Plus	3	11	500-2000	190/19	30-150/3-15
HD 16/15-4 Cage Plus	3	9.5	500-1600	190/19	30-150/3-15
HD 10/25-4 Cage Plus	3	9.2	1000	273/27.3	250/25
HD 7/15	3	4.7	250-700	175/17.5	10-150/1-15
HD 6/00	1	3	340-650	125/12.5	10-110/1-11
HD 10/18-4 Cage Ex	3	5.5	1000	220/22	160/16
HD 10/15-4 Cage Food	3	6.4	440-990	175/17.5	20-145/2-14.5
HD 7/10 CFX	3	4.5	250-700	120/12	10-100/1-10
HD with combustion engine					
HD 9/23 C De	-	-	400-930	250/25	40-230/4-23
HD 9/21 G	-	-	200-850	230/23	10-210/1-21
HD 8/20 G	-	-	200-750	230/23	10-200/1-20
HD 7/15 G	-	-	650	160/16	150/15
HD 7/8 G Cage	-	-	650	160/16	150/15
HD Classic					
HD 9/20-4 Classic	3	6.9	520-900	240/24	70-200/7-20
HD 7/18-4 Classic	3	4.9	520-700	220/22	70-180/7-18
HD 7/14-4 Classic	1	3.4	450-600	190/19	70-150/7-15
HD 7/11-4 Classic	1	3.9	520-700	150/15	70-110/7-11
HD 9/18-4 Cage Classic	3	5.9	450-900	240/24	70-180/7-18
HD 7/16-4 Cage Classic	3	4.3	400-700	220/22	70-160/7-16
HD 7/13-4 Cage Classic	1	2.9	520-700	150/15	70-110/7-11
HD 7/11 Cage Classic	1	2.2	650	160	50-110/5-11
HD 8/23 G Classic	-	-	800	280/28	230/23
HD 7/20 G Classic	-	-	700	250/25	200/20
HD 6/15 G Classic	-	-	600	200/20	150/15

HIGH-PRESSURE CLEANER ACCESSORIES/ADDITIONS

HD solar panel cleaner					
	Weight (kg)	Working width (mm)	Flow rate (l/h)	Length (m)	Material
Solar brush 400	2.8	700	700-1000/1100-1300	-	-
Solar brush 800	7	700	700-1000/1100-1300	-	-
Solar lance TL 74	3.5	-	-	1.8-2.7	Hybrid
Solar lance TL 10 H	4	-	-	2.4-10.2	Hybrid
Solar lance TL 10 C	5	-	-	2.4-10.2	Carbon
Solar lance TL 14 C	5	-	-	2.4-14	Carbon
HD water softening					
	Weight (kg)	Water pressure (bar)	Work temperature (°C)	Capacity (l)	Regeneration (l/h)
WS 50	35	0-10	1-50	5000	-
WS 100	40	0-10	1-50	10000	-
WS regenerator	5.8	-	-	-	~ 2
HD barrel cleaners					
	Weight (kg)	Max. inlet temperature (°C)	Working pressure (bar/MPa)	Flow rate (l/h)	Cleaning cycle (s)
BC 14/12	4.8	80	max. 120/12	600-1400	36

STATIONARY HIGH-PRESSURE CLEANERS

Stationary hot water high-pressure cleaner single-lance operation					
	Model	Supply voltage (phases) Connection load (kW)	Flow rate (l/h)	Working pressure (bar/MPa)	Max. temperature (°C)
HDS 12/14-4 ST	3	7.5	600-1200	30-140/3-14	155/80
HDS 12/14-4 ST S	3	7.5	600-1200	30-140/3-14	155/80
HDS 12/14-4 ST Gas LPG	3	7.5	600-1200	30-140/3-14	155/80
HDS 9/16-4 ST	3	6.4	500-900	30-140/3-14	98
HDS 9/16-4 ST Gas LPG	3	6.4	500-900	30-140/3-14	98
Stationary cold water high-pressure cleaner 60/85°C multiple lance operation					
	Model	Supply voltage (phases) Connection load (kW)	Flow rate (l/h)	Working pressure (bar/MPa)	Max. temperature (°C)
HDC 120/10	3	11/46	700-12000	100/10	85
HDC 90/10	3	11/35	700-9000	100/10	85
HDC 60/10	3	11/24	700-6000	100/10	85
HDC 80/16	3	11/46	700-8000	160/16	85
HDC 80/08	3	11/24	700-8000	80/8	85
HDC 60/16	3	11/35	700-6000	160/16	85
HDC 60/08	3	11/19	700-6000	80/8	85
HDC 40/16	3	11/24	700-4000	160/16	85
HDC 40/08	3	11/13	700-4000	80/8	85
HDC 20/16	3	11/11	700-2000	160/16	85
HDC 20/08	3	11/6	700-2000	80/8	85
Stationary cold water high-pressure cleaner single-lance operation					
	Model	Supply voltage (phases) Connection load (kW)	Flow rate (l/h)	Working pressure (bar/MPa)	Max. temperature (°C)
HD 13/12-4 ST	3	6.4	650-1300	30-120/3-12	70
HD 9/18-4 ST	3	6.4	460-900	40-180/4-18	70
HD 7/16-4 ST	3	4.4	300-700	30-160/3-16	70

WET AND DRY VACUUM CLEANERS

		Air flow (l/s)	Vacuum (mmbar/MPa)	Container capacity (l)	Max. rated input power (kW)	Sound pressure level (dB(A))
Tact class						
NT 75/2 Tact Me Tc	2 + 7.4	254/25.4	75	2760	73	
NT 65/2 Tact Tc	2 + 7.4	254/25.4	65	2760	73	
NT 55/2 Tact Me I	2 + 7.4	254/25.4	55	2760	73	
NT 50/2 Tact Me I	2 + 7.4	254/25.4	50	2760	73	
NT 65/2 Tact Tc	2 + 7.4	254/25.4	65	2760	73	
NT 55/1 Tact Tc Ex	7.4	254/25.4	55	1380	69	
NT 45/1 Tact Tc Ex	6.3	244/24.4	45	1380	71	
NT 45/1 Tact Tc Ex	7.4	254/25.4	45	1380	69	
NT 40/1 Tact Tc Ex	7.4	254/25.4	40	1380	69	
NT 35/1 Tact Tc Ex	7.4	254/25.4	35	1380	69	
Ap class						
NT 75/2-Adv Me Tc	2 + 7.4	254/25.4	75	2760	73	
NT 65/2-Adv	2 + 7.4	254/25.4	65	2760	73	
NT 55/1-Adv	7.4	254/25.4	55	1380	70	
NT 45/1-Adv	7.4	254/25.4	45	1380	70	
NT 40/1-Adv (Ag) Tc	7.4	254/25.4	40	1380	66	
NT 14/1-Adv (Ag) Tc Adv L1 Tc Adv L1	6.1	230/23	14	1380	70	
NT 14/1-Adv (Ag) Tc Adv L1	6.1	230/23	14	1380	70	
Standard class						
NT 70/3 Me Tc	3 + 5.6	208/20.8	70	3600	79	
NT 70/2 Me Tc	2 + 5.6	208/20.8	70	2400	75	
NT 70/2 Tc	3 + 5.6	208/20.8	70	3600	79	
NT 70/2 Adv	2 + 5.6	208/20.8	70	2400	75	
NT 70/2 Me	2 + 5.6	208/20.8	70	2400	75	
NT 70/3	3 + 5.6	208/20.8	70	3600	79	
NT 70/2	2 + 5.6	208/20.8	70	2400	75	
NT 70/1	5.6	208/20.8	70	1200	73	
NT 48/1 Tc	6.7	200/20	48	1380	72	
NT 48/1 Me Adv	6.7	200/20	27	1380	72	
NT 27/1-Adv	6.7	200/20	27	1380	72	
NT Classic						
NT 90/2 Me Classic	2 + 5.3	225/22.5	90	2300	76	
NT 70/2 Me Classic	2 + 5.3	225/22.5	70	2300	76	
NT 50/2 Me Classic	2 + 5.3	225/22.5	50	2300	76	
NT 50/1 Me Classic	5.3	225/22.5	50	1150	73	
NT 30/1 Me Classic	5.9	227/22.7	38	1500	78	
NT 30/1 Me Classic	5.9	227/22.7	30	1500	78	
Safety and special vacuums						
NT 80/1 B1 M S	5.6	235/23.5	80	1380	70	
NT 75/1 Tact Me Ec H 22	6.1	220/22	75	1000	76	
NT 75/1 Tact Me Tc H	7.4	254/25.4	75	1000	67	
NT 45/1 Tact Tc H	7.4	254/25.4	45	1000	67	
NT 35/1 Tact Tc H	7.4	254/25.4	35	1000	67	
NT 45/1 Tact Tc M	7.4	254/25.4	55	1		