

**Fast. Safe. Clean.**





## The best system for cleaning: Kärcher.

Production can only run smoothly when every part interlocks perfectly. The same applies to cleaning processes: efficient cleaning can only be achieved if all solutions harmonise with one another. This is why Kärcher, as a system provider in all sectors, offers effective, safe, strong and customised cleaning solutions. From surface cleaning to basic cleaning. For your systems, your warehouses and your offices. So that everything continues to run smoothly.

### **1 For machine manufacturers**

Kärcher is your partner for tailor-made solutions. Put your trust in quality, efficiency and service.



**2 For production facilities**

Quickly clean. With cleaning solutions during production: industrial vacuums, ice blasters, high-pressure cleaners.

Page 6

**3 For production sites**

Increased safety through cleanliness: clean floors at the production site with wet and dry vacuum cleaners, scrubbers/scrubber driers, sweepers/sweeper vacuums.

Page 8

**4 For warehouses**

Whether outdoor or indoor warehouses, Kärcher has efficient solutions with a high area performance for fast and effective cleaning.

Page 10

**5 Office surfaces and cleaning agents**

Effective Kärcher devices help to protect high-value parts in indoor and outdoor warehouses, thanks to cleaning solutions that retain value.

Page 12

## Kärcher – your reliable partner.

Cleaning couldn't be more thorough. In the machine manufacturing industry, it is important to find a cleaning partner which has a solution for every challenge and takes care of every little detail. Not just with equipment, but also with service and quality. Everything has to fit – as with the system provider Kärcher. An experienced partner you can rely on for all industrial cleaning tasks.



A perfect service is another part of perfect industrial cleaning, around the clock and around the world. As the world's largest manufacturer of cleaning machines, Kärcher serves its customers all around the world at more than 50,000 service and sales points.

With sound advice and fast service. Through our professional hotline or directly at your production site. Whether you require application advice, assistance, spare parts or a fast repair.



### 1 You can count on us

Your advantages in the long term: Kärcher develops cleaning solutions that are robust and designed to last. All products are subject to intensive quality controls to ensure that they meet all requirements, from office cleaning to stubborn dirt in production areas.

### 2 Easy to use

Nothing is more time-consuming than complicated machines. Kärcher avoids elaborate operation to ensure trouble-free cleaning without shutdowns. For example, with Easy Operation, all functions can be controlled simply with just one dial. This makes employees happy, saves time and increases efficiency.

### 3 Precisely coordinated

If everything fits together, it's Kärcher. As a system provider, Kärcher offers more than just innovative technology – effective cleaning agents and matching accessories round off the offer. The benefits for you: everything is perfectly coordinated so that you can work even more efficiently.

# This is where cleanliness is produced.

In production systems, cleaning not only ensures cleanliness and process safety, but also serves to maintain machines and contributes to value retention. Every type of dirt has to be quickly and effectively removed – from swarf to grease and oils and emulsions – without interrupting the production process and always with the highest degree of safety. All of these requirements are met by the innovative cleaning solutions from Kärcher.



## With water

Remove oils and emulsions with high pressure: the effective high-pressure cleaners for mobile application or stationary in multiple lance operation.



## With air

Industrial vacuums safely pick up swarf and liquids; from the mobile compact device to the stationary systems with large capacity.



## With ice

Without water and without corrosion. Dry ice cleaners clean your systems while offering complete material protection.



**1 Gentle cleaning**

Don't worry about your machines – innovative ice blasting helps to remove dirt from surfaces gently. Silicone, oil, grease, glues, dyes, paints, and much more can be removed quickly and easily with dry ice pellets, with only short downtimes thanks to Cleaning in Process (CIP).

**2 Cleanliness without interruption**

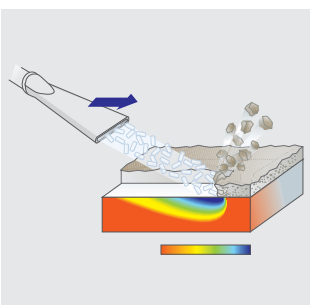
Powerfully remove moist and dry dirt: Kärcher industrial vacuums. Flexible and versatile thanks to specially coordinated, robust and wear-resistant suction lances. The latest turbine technologies ensure consistently high cleaning power.

**3 Working with high pressure**

Stubborn and adhering dirt on the production facilities is reliably removed with Kärcher high-pressure units. Adhesives, crusting, or adhering oils are quickly removed.

**4 Making everything clean**

There is no room for compromise when cleaning parts. Intensive cleaning is carried out with solvent-free, water-based cleaning agents that effortlessly remove grease, oils, and other stains. The use of the correct cleaning agents allows components to be cleaned gently.



**Ice blasting**

Innovative spray process, in which dry ice pellets (consolidated CO<sub>2</sub> snow) is used as a spray medium.



**Explosion protection**

Combustible dusts of different explosion classes and health-endangering dusts, class M, are reliably removed.



**Safety**

Well-protected suction hoses for sharp-edged dirt and swarf. Electrically conductive and smooth inside. Approved for use in ATEX zone-22 atmospheres.

# Clean systems for clean work.

Easily remove production residues, rubber wear, oils, sharp-edged swarf or transport dirt with innovative Kärcher devices. The right solution for every need: from compact wet and dry vacuum cleaners to the ride-on scrubber drier which ensures fast drying and avoids process interruptions. A wide range of accessories increases the flexibility and ensures efficient cleaning.



## Scrubber driers

Adhesive floor stains such as rubber wear are removed without residue with manually operated, ride-on or step-on scrubber driers.



## Vacuum sweepers

Economical, clean, and efficient on all surfaces. Thanks to the wide range of units, Kärcher sweeper vacuums meet any requirement.



## Wet and dry vacuuming

Indispensable: wet and dry vacuum cleaners effortlessly pick up all kinds of dirt. Whether dry, wet or liquid – vacuum cleaners from Kärcher pick up everything.



## NT vacuum with Tact<sup>2</sup>

Patented complete systems designed to pick up large quantities of fine dust and coarse dirt.





**1 Removing vehicle track marks**

Reliably remove adhesive stains, oils or other liquids in production halls with scrubber driers. This ensures increased safety, because the robust Kärcher devices clean and vacuum simultaneously. So paths are quickly clean, free and ready for use.

**2 Quick interim cleaning**

A simple and ideal solution for small volumes of dirt: walk-behind sweepers offer high flexibility, great convenience and a powerful performance.

**3 Remove loose dirt**

For fine or coarse dirt, liquid or dry. For oils or hazardous dusts. With Kärcher wet and wet/dry vacuum cleaners, you are always optimally equipped for every situation, thanks to high-performance turbines, innovative filter engineering and a large variety of accessories.



**Battery operation**

High-performance, battery-operated devices allow extremely long work intervals.



**Easy maintenance**

The filter can be replaced easily.



**Complete swarf basket**

For all IV 60 and IV 100 industrial vacuum cleaners, for use with a wet container.

# Cleaning quality is another element of high-quality storage.

When material has to be transported safely, cleanliness is vital. Because dirt is a stumbling block in routine operations. Residues can be removed quickly with robust Kärcher ride-on units, walk-behind vacuum cleaners and sweepers. Compact dimensions ensure manoeuvrability – and numerous variants and accessories are available, from gas-operated drive to a canopy.



## For vacuuming

With Kärcher industrial vacuums you can master every challenge: from compact vacuums for mobile use to superior class large-capacity vacuums.



## For sweeping

Kärcher manual sweepers are ergonomic, easy to use and sweep meticulously – even in corners.



## For sitting

Ride-on sweepers offer very large area performances. And thanks to four different drive variants, there is one for every cleaning task.



**1 Safe in the indoor storage area**

Safe cleaning in narrow aisles and between high-bay racking – not a problem for Kärcher. Compact dimensions ensure high manoeuvrability and canopies with Roll Over Protective Structure (ROPS) and Falling Object Protective Structure (FOPS) for the necessary safety. In addition, area performances of up to 7,800 m<sup>2</sup>/h and large battery capacities ensure longer work intervals.

**2 Powerful in outside areas**

On large areas, cleanliness is essential for safety. Continuous material handling and environmental influences demand fast and effective cleaning solutions. With Kärcher ride-on units and the large variety of accessories, large outdoor surfaces are easy to clean, without interrupting regulated processes.

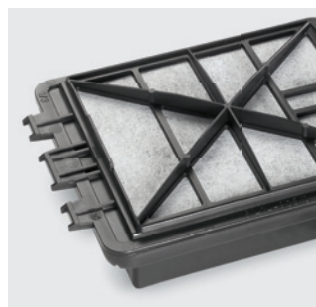
**3 Economical in use**

See how cost-effective cleaning can be. Area size, volume and cleaning frequency are decisive. Kärcher would be happy to help you determine the best possible options for you.



**Side brush**

Makes work close to edges possible while increasing the area coverage of Kärcher sweepers and sweeper vacuums.



**Clean air**

The intelligent HEPA filters reliably retain allergens. This ensures clean exhaust air and storage rooms that remain fresh.

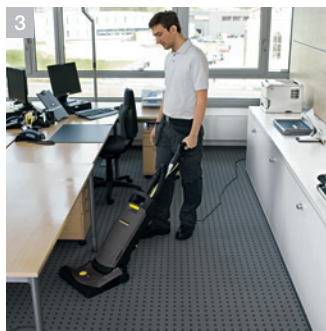


**Powerful filter system**

Flat pleated filter with 7 m<sup>2</sup> filter surface. A dual scraper ensures effective filter cleaning. Optional: high-performance round filter for high dust formation requirements.

# All you need for a clean impression.

Kärcher offers the perfect office cleaning solution: from in-depth cleaning to polishing, we offer the perfect solution for every requirement and every area size. Kärcher machines are easy to use, whisper quiet, safe and powerful. A wide range of accessories extend the range of applications.



## 1 Mobile cleaners

Easy to use, robust and powerful carpet cleaners feature an extensive range of accessories for numerous tasks.

## 2 Dry vacuuming like a professional

Developed with contract cleaners, this professional series offers the benefits of high suction power and a five-stage filter system.

## 3 Removes dirt deep in the pile

Ideal for passageways and offices with carpet: deep cleaning with Kärcher upright vacuum cleaners.

## 4 For cleaning small areas

The BR 30/4 C cleans all small hard surfaces gently and effectively. And is just as efficient in a forwards or reverse direction.



### Upright vacuum cleaners

Powerful suction combined with an electric brush. Effortlessly removes stubborn dirt particles.



### Carpet cleaners

Optimal cleaning results on textile surfaces – in offices, corridors, conference rooms, etc. The right solution for all areas.



### Dry vacuum cleaners

Compact and extremely quiet: small, mobile dry vacuum cleaners combine convenience, powerful suction and a large working radius.



### Spray extraction cleaner

Ideal for thoroughly cleaning all textile surfaces by spray extraction – powerful and versatile.

# Adapted for the best cleaning results.

Save costs, protect the environment and clean more efficiently. Kärcher also develops specially adapted cleaning agents that are compatible with its innovative devices. They are highly efficient and help make your work easier and faster. They guarantee a powerful cleaning action with low consumption. This avoids unnecessary costs and protects the environment through fewer contaminants.



## 1 Versatility for industrial applications

Fast-acting, gentle cleaning agents which also remove stubborn dirt such as oils, grease and rust.

## 2 Offices and business premises

Universal cleaning agents from Kärcher with pleasant fragrances, which are not harmful to health and which loosen stubborn stains on carpets, for example oils.

## 3 Universal and versatile

Kärcher cleaning agents are compatible with all Kärcher parts cleaners and advanced industrial applications.



**Active cleaner, alkaline, RM 81 ASF eco!efficiency**  
Active, gentle high-pressure cleaner concentrate for removing stubborn stains.



**Oil and grease cleaner EXTRA RM 31 ASF eco!efficiency**  
Highly concentrated high-pressure basic cleaner.



**Floor deep cleaner RM 69 ASF eco!efficiency**  
Powerful cleaning agent for floors and industrial floors.

# The right product for every job.

Application	Cleaning machines	Dry ice devices, high-pressure cleaners and steam cleaners	Vacuum cleaners (Industrial, dry and wet/ dry vacuum cleaners)
<b>Production facilities</b> 	HD 13/12-4 ST HDC Classic/Standard/Advanced HDS 12/18-4 S/SX HD 9/20-4M HDS 8/18-4 C HD 7/10 CXF HD 7/16-4 ST HD 9/18-4 ST HD 10/23-4 SX Plus HD 13/18-4 S Plus HD 13/18-4 SX Plus HD 10/23-4 S HD 10/25-4 S IB 7/40 Classic IB 7/40 Advanced IB 15/80	<b>ATEX zone 22:</b> NT 75/1 Me Ec H Z22 IV 60/27-1 M B1 IV 60/30 M B1 IV 100/40 M B1 IV 100/55 M B1 IV 100/75 M B1 <b>Hazardous dusts (Dust class H):</b> NT 35/1 Tact Te H NT 45/1 Tact Te H NT 75/1 Tact Me Te H IV 100/55 H B1 <b>Liquids (coolants/ lubricants &amp; shavings):</b> IVL 50/24-2 IVL 120/27-1 IVL 120/30 IVC 60/24-2 Tact <sup>2</sup> IVC 60/30 Tact <sup>2</sup> <b>Wet and coarse dirt cleaning:</b> NT 27/1 Advanced NT 27/1 Me Advanced NT 48/1 NT 70/1 NT 70/2 NT 70/2 Tc NT 70/3 NT 70/3 Me Tc NT 72/2 Eco Tc IVC 60/24-2 Ap IVC 60/30 Ap	IV 60/24-2 W IV 60/36-3 W IV 60/30 IV 100/40 IV 100/55 IV 100/75 <b>Fine dust:</b> NT 35/1 Ap NT 65/2 Ap NT 361 Eco NT 65/2 Eco NT 35/1 Tact NT 35/1 Tact Te NT 45/1 Tact Te NT 45/1 Tact Te Ec NT 45/1 Tact Te Ec NT 55/1 Tact NT 55/1 Tact Te <b>Large amounts of very fine dusts:</b> NT 65/2 Tact <sup>2</sup> NT 65/2 Tact <sup>2</sup> Tc NT 75/2 Tact <sup>2</sup> Me IVC 60/24-2 Tact <sup>2</sup> IVC 60/24-2 Tact <sup>2</sup> M IVC 60/30 Tact <sup>2</sup> <b>Non-stop operation (1 phase):</b> IVC 60/12-1 Tact Ec IVL 120/27-1 IV 60/27-1 M B1
<b>Production sites</b> 	HD 13/12-4 ST HDC Classic/Standard/Advanced HDS 12/18-4 S/SX HDS 8/18-4 C HD 9/20-4 M HD 7/16-4 ST HD 9/18-4 ST HD 10/25-4 S  DE 4002	<b>Accessories</b> Easy-/Inno foam kit, FRV 30, FR 30, FR 50	NT 27/1 Advanced T 17/1 NT 361 Eco NT 35/1 Ap NT 65/2 Ap  NT 55/1 Tact NT 75/2 Tact <sup>2</sup> Me Tc NT 70/2 Me Tc
<b>Storage area cleaning and outdoor area cleaning</b> 	HD 13/12-4 ST HDS 12/18-4 S/SX HD 9/20-4M HD 7/16-4 ST HD 9/18-4 ST HD 10/25-4 S  <b>Accessories</b> Easy-/Inno foam kit, FR 30 / FR 50		NT 27/1 Advanced T 17/1 NT 361 Eco NT 35/1 Ap NT 65/2 Ap  NT 55/1 Tact NT 75/2 Tact <sup>2</sup> Me Tc NT 70/2 Me Tc
<b>Office cleaning</b> 			T 7/1 T 10/1 Professional T 12/1 T 12/1 eco!efficiency CV 38/2

	Scrubbers and scrubber driers	Sweepers and sweeper vacuums	Parts cleaners	Cleaning agents
<p><b>Non-stop operation (3 phase):</b>            IVC 60/30 Ap            IVC 60/30 Tact<sup>2</sup>            IV 60/30            IV 60/30 M B1            IV 100/40            IV 100/40 M B1            IV 100/55            IV 100/55 M B1            IV 100/55 H B1            IV 100/75            IV 100/75 M B1            IVL 120/30            all IV 100 and IVL 120</p>			PC 100 M2 Bio Tank interior cleaning TSC/RCI systems (based on modular components)	<p><b>HD/HDS</b>            RM 31            RM 36            RM 55            RM 81            RM 110            RM 111            RM 750            RM 751</p> <p><b>PC/TSC/RC</b>            PC Bio 10            PC Bio 20            Microbe suspension            RM 39            RM 63</p>
	BD 17/5 C  BDS 43/150 C BR 30/4 C  BRS 40/1000 C BR 40/10 C BD 40/12 C BR 40/25 C Ep B 40 C/W B 60 W B 80 W B 90 R B 140 R BR 100/250 R Bp Pack BR 120/250 R I Bp Pack	KM 70/20 C  KM 70/30 C Bp Pack Advanced KM 75/40 W Bp Pack  KM 90/60 R Bp Pack KM 100/100 R (Lpg/Bat)	PC 100 M1 Bio PC 100 M2 Bio PC 60/130 T TSC/RCI systems	<p><b>HD/HDS</b>            RM 31    RM 111            RM 55    RM 750            RM 81    RM 751            RM 110</p> <p><b>BR/BD</b>            RM 69            RM 755 ES            RM 750            RM 776</p> <p><b>PC/TSC/RC</b>            PC Bio 10            PC Bio 20            Microbe suspension            RM 39            RM 63</p>
	BD 80/120 B 90 R B 140 R BR 100/250 R Bp Pack BR 120/250 R I Bp Pack	KM 70/20 C KM 70/30 C Bp Pack Advanced KM 75/40 W Bp Pack KM 90/60 R Bp Pack KM 100/100 R (Lpg/Bat) KM 120/150 R (Lpg/D/P/Bat) MC 50 KM 130/300 R KM 150/500 R KM 170/600 R		<p><b>HD/HDS    RM sprayer</b>            RM 55    RM 776            RM 110            RM 111            RM 750            RM 751</p> <p><b>BR/BD</b>            RM 750            RM 69            RM 755 ES</p>
	BR 30/4 C BR 40/10 C BR 40/25 C Ep BRC 30/15 C BRC 45/45 C	KM 35/5 C KM 75/40 W P Carpet		<p><b>BR/BD    Manual</b>            RM 730    RM 720            RM 743    RM 722            RM 746    RM 724            RM 748    RM 736            RM 752    RM 738            RM 754    RM 740            RM 780    RM 769                        RM 781</p> <p><b>BRC/Puzzi</b>            RM 760            RM 768 i.Capsol</p>

# Technical data at a glance.

Dry vacuum cleaners				
	Air flow rate (l/s)	Vacuum (mbar/kPa)	Max. power rating (W)	Sound level (dB(A))
<b>Dry vacuum cleaners</b>				
T 7/1	54	245/24.5	1200	65
T 10/1 Professional	61	244/24.4	1250	63
T 12/1	61	244/24.4	1300	61
T 12/1 ecoefficiency	43	229/22.9	750	56
T 17/1	61	244/24.4	1300	61
<b>Upright vacuum cleaners</b>				
CV 38/2	48	250/25	1200	67

Wet and dry vacuum cleaners				
	Air flow rate (l/s)	Vacuum (mbar/kPa)	Max. power rating (W)	Sound level (dB(A))
<b>Standard class</b>				
NT 27/1 Advanced	67	200/20	1380	72
NT 27/1 Me Advanced	67	200/20	1380	72
NT 48/1	67	200/20	1380	72
NT 70/1	56	208/20.8	1200	73
NT 70/2	2 × 56	208/20.8	2400	75
NT 70/2 Tc	2 × 56	208/20.8	2400	75
NT 70/2 Me Tc	2 × 56	208/20.8	2400	75
NT 70/3	3 × 56	208/20.8	3600	79
NT 70/3 Me Tc	3 × 56	208/20.8	3600	79
NT 75/1 Me Ec H Z22	62	245/24.5	1000	67
<b>Ap class</b>				
NT 361 Eco	57	235/23.5	1380	66
NT 35/1 Ap	61	230/23	1380	67
NT 65/2 Eco	2 × 56	235/23.5	2750	74
NT 65/2 Ap	2 × 74	254/25.4	2760	73
NT 72/2 Eco Tc	2 × 56	235/23.5	2750	74
<b>Tact class</b>				
NT 35/1 Tact	61	230/23	1380	67
NT 35/1 Tact Te	61	230/23	1380	67
NT 45/1 Tact	61	230/23	1380	67
NT 45/1 Tact Te	61	230/23	1380	67
NT 45/1 Tact Te Ec	62	245/24.5	1380	71
NT 55/1 Tact	61	230/23	1380	67
NT 55/1 Tact Te	61	230/23	1380	67
NT 35/1 Tact Te H	61	230/23	1000	67
NT 45/1 Tact Te H	61	230/23	1000	67
NT 75/1 Tact Me Te H	61	230/23	1000	67
NT 65/2 Tact <sup>2</sup>	2 × 74	254/25.4	2760	73
NT 65/2 Tact <sup>2</sup> Tc	2 × 74	254/25.4	2760	73
NT 75/2 Tact <sup>2</sup> Me	2 × 74	254/25.4	2760	73
NT 75/2 Tact <sup>2</sup> Me Tc	2 × 74	254/25.4	2760	73

Steam cleaners				
	Voltage (V)	Heating output (W)	Steam pressure (bar)	Tank capacity (l)
<b>Steam cleaner</b>				
DE 4002	230	2250	3.2	2.4

Carpet cleaners				
	Deep/interim cleaning area performance (m <sup>2</sup> /h)	Brush working width (mm)	Suction working width (mm)	Fresh/dirty water tank (l)
<b>Carpet cleaners</b>				
BRC 30/15 C	100/-	270	315	15 / 15
BRC 45/45 C	350/1000	410	450	45 / 38

Scrubbers/scrubber driers				
	Brush/suction working width (mm)	Theoretical working capacity (m <sup>2</sup> /h)	Practical working capacity (m <sup>2</sup> /h)	Fresh/dirty water tank (l)
<b>Stair cleaner</b>				
BD 17/5 C	200 / -	-	-	-
<b>Single-disc machine</b>				
BDS 43/150 C	430 / -	-	-	10 / -*
<b>Scrubber</b>				
BRS 40/1000 C	400 / -	450	-	-
<b>Compact scrubber driers</b>				
BR 30/4 C	300 / 300	200	130	4 / 4
BR 40/10 C	400 / 400	400	300	10 / 10
BD 40/12 C	385 / 450	1100	750	12 / 12
BR 40/25 C Ep	440 / 770	1600	1100	25 / 25
<b>Walk-behind scrubber driers</b>				
B 40 C/W	430-550/850	1700-2200	-	40 / 40
B 60 W	510-650/850	2040-2600	-	66 / 60
B 80 W	650-750/940	-	1950-2250	80 / 80
BD 80/120	800 / 990	3200	2400	120 / 120
<b>Ride-on scrubber driers</b>				
B 90 R	550-750	3300-4500	2475-3375	90 / 90
B 140 R	750-900/940-1060	4500-5400	3375-4050	140 / 140
BR 100/250 R Bp Pack	1000 / 1160	6000	4500	250 / 250
BR 100/250 R I Bp Pack	1000 / 1160	6000	4500	250 / 250

\*option

Sweepers/vacuum sweepers					
	Working width without / with 1 / with 2 side brushes (mm)	Waste container (l)	Max. area performance (m <sup>2</sup> /h)	Indoor use	Outdoor use
<b>Walk-behind sweepers</b>					
KM 35/5 C	350/-/-	5	1480	■	■
KM 70/20 C	480/700/-	42	2800	■	■
KM 70/30 C Bp Pack Adv	480/700/-	42	2800	■	■
<b>Vacuum sweepers</b>					
KM 75/40 W Bp Pack	550/750/-	40	3375	■	-
KM 75/40 W P	550/750/-	40	3375	-	■
<b>Ride-on vacuum sweepers</b>					
KM 90/60 R Bp Pack	615/900/1150	60	6900	■	■
KM 100/100 R (Lpg/Bat)	700/1000/1300	100	10400	■	■
KM 120/150 R (Lpg/D/P/Bat)	850/1200/-	150	9600	■	■
KM 130/300 R	1000/1300/1150	300	9100-13000	■	■
KM 150/500 R	1200/1500/1800	500	12000-18000	■	■
KM 170/600 R	1350/1680/2000	600	23520	■	■

■ Included



## Sweepers/vacuum sweepers

	Traction drive	Power (HP)	Working width (mm)	Waste container (l)	Hydraulic container lift
<b>Vacuum sweeper</b>					
MC 50	4WD	20	1100-1400	500	■
■ Included					

## Cold water high-pressure cleaners

	Power supply (phases)	Power rating (kW)	Flow rate (l/h)	Max. pressure (bar/MPa)	Working pressure (bar/MPa)
<b>HD middle class</b>					
HD 9/20-4 M	3	7	460-900	220/22	40-200/4-20
<b>HD super class</b>					
HD 10/23-4 S	3	7.8	1000	253/25.3	230/23
HD 10/23-4 SX Plus	3	7.8	1000	253/25.3	230/23
HD 10/25-4 S	3	9.2	500-1000	275/27.5	30-250/3-25
HD 13/18-4 S Plus	3	9.2	650-1300	198/19.8	30-180/3-18
HD 13/18-4 SX Plus	3	9.2	650-1300	198/19.8	30-180/3-18
<b>Special high-pressure cleaners</b>					
HD 7/10 CXF	3	4.5	250-700	120/12	10-100/1-10
<b>Stationary high-pressure cleaners for use with unheated water (70-85°C)</b>					
HD 7/16-4 ST	3	4.4	300-700	190/19	30-160/3-16
HD 9/18-4 ST	3	6.4	460-900	210/21	30-180/3-18
HD 13/12-4 ST	3	6.4	650-1300	150/15	30-120/3-12

## Hot water high-pressure cleaner

	Power supply (phases)	Power rating (kW)	Flow rate (l/h)	Working pressure (bar/MPa)	Max. temperature (°C)
<b>HDS compact class</b>					
HDS 8/18-4 C	3	6	300-800	30-180/3-18	80/155
<b>HDS super class</b>					
HDS 12/18-4 S	3	8.4	600-1200	30-180/3-18	80/155
HDS 12/18-4 SX	3	8.4	600-1200	30-180/3-18	80/155

## Industrial high-pressure cleaning systems

	Max. pressure (bar)	Output (l/h)	Heating capacity (kW)	Max. supply temperature (°C)	Power rating (kW)
<b>Stationary ultra-high-pressure cleaners (industrial)</b>					
HDC Classic	160/80	700-2000	-	85/60	11/5.5
HDC Standard	160/80	700-8000	-	85/60	11-44
HDC Advanced	100	700-12000	-	85/60	11-44

## Cleaning devices for industrial use

	Air flow rate (l/s)	Vacuum (kPa)	Container capacity (l)	Filter area (cm <sup>2</sup> )	Nominal diameter ID
<b>Industrial vacuums</b>					
IVC 60/24-2 Tact <sup>2</sup>	2 x 74	25.4	60	9500	42/52
IVC 60/24-2 Tact <sup>2</sup> M	2 x 74	25.4	60	9500	42/52
IVC 60/24-2 Ap	2 x 74	25.4	60	9500	42/52
IVC 60/30 Tact <sup>2</sup>	68	28.6	60	19000	42/52
IVC 60/30 Ap	68	28.6	60	19000	42/52/72
IVC 60/12-1 Tact Ec	62.5	24.4	60	9500	42
IV 60/24-2 W	2 x 56	23.5	60	23000	51
IV 60/30	68	28.6	60	23000	51
IV 60/36-3 W	3 x 56	23.5	60	23000	51
IV 60/27-1 M B1	65	24	60	23000	51
IV 60/30 M B1	68	28.6	60	23000	51
IV 100/40	139	18	100	23000	61
IV 100/55	139	28	100	23000	61
IV 100/75	153	33	100	43000	61
IV 100/40 M B1	139	18	100	23000	61
IV 100/55 M B1	139	28	100	23000	61
IV 100/55 H B1	139	28	100	23000	61
IV 100/75 M B1	153	33	100	43000	61
IVL 50/24-2	2 x 56	23.5	50/38	-	51
IVL 120/27-1	65	24.5	120/39	-	51
IVL 120/30	68	28.6	120/39	-	51

	Flow rate (l/h)	Working area/diameter (mm)	Max. temperature (°C)	Load capacity (kg)	Power rating (kW)
<b>Parts cleaners</b>					
PC 100 M1 Bio	900	660 x 420	40	100	1
PC 100 M2 Bio	900	1041 x 660	40	100	1
PC 60/130 T	4500	600	80	130	5.5

	Throughput (l/h)	Max. pressure (bar)	Max. temperature (°C)	Electric drive (~ / V/Hz / kW)	Weight (kg)
--	------------------	---------------------	-----------------------	--------------------------------	-------------

### Container interior cleaning systems

Based on modular components, Kärcher container interior cleaning systems are designed, according to your requirements, with energy and operational costs in mind. Kärcher will impress you with innovative concepts and a comprehensive service.

Range of the available modular components:

HP pump HDI 38/12	3800	120	80	3/400/50, 15.5	220
Spray head HKF 50 P	1200	100	95	-	7
Spray head HKS 100	2400-2600	40-100	80	-	6
Spray head HKF 200 E	10000	200	95	3/400/50	35
Hot water generator HWE 4000 Gas	2000-6000	140	90	1/230/50, 0.75	550

	Air pressure (bar/MPa)	Dry ice consumption (kg/h)	Air flow (m <sup>3</sup> /min)	Dry ice capacity (kg)
<b>Dry ice cleaning</b>				
IB 7/40 Classic	2-10 / 0.2-1	15-50	0.5-3.5	15
IB 7/40 Advanced	2-10 / 0.2-1	15-50	0.5-3.5	15
IB 15/80	3-16 / 0.3-1.6	30-100	3-11.5	35

# eco!efficiency: Achieve more with efficiency.

If you want to move and change things, you have to point the way. And show your colours. The blue symbols representing the various building blocks of Kärcher eco!efficiency show at a glance how and where Kärcher's power of innovation achieves measurably greater and better efficiency for customers, products and the environment. Kärcher eco!efficiency is implemented in all business areas and is an integral part of corporate policies and actions.



## Reduced water consumption

Drinking water is precious and conserving it protects natural resources and saves energy for processing, transport and disposal. Many Kärcher high pressure cleaners and scrubber driers already meet the eco!efficiency standard or feature an eco!efficiency mode, which efficiently regulates the amount of water depending on the cleaning task.



## Less noise

Noise is not just unpleasant, it has shown to be damaging to health. Kärcher counters working noise both in its own production processes and for users by reducing noise levels and power to an optimum level. An example of this is the T 12/1 eco!efficiency dry vacuum cleaner, the working noise level of which has been reduced by 5 dB(A) compared to the standard model, which corresponds to a reduction in volume of more than 50%. Furthermore, the low frequency of the work noise is subjectively perceived as being very pleasant. As a result, the T 12/1 eco!efficiency is also outstandingly suitable for longer work intervals and noise-sensitive areas.



## Intelligent energy efficiency

Everything has its limits. Sometimes more power does not make sense. The T 12/1 eco!efficiency dry vacuum cleaner proves that less can be more. Its 750 W motor uses 40% less electricity, achieving 98% of the cleaning performance of the standard model thanks to flow-optimised suction channels, which is more than sufficient for maintenance cleaning.



## Exemplary repairability

As early as the development phase, Kärcher machines are designed for repairability: as few components and assemblies as possible, the best possible accessibility and as many standard parts as possible.



## Materials to suit the job

The selection of optimal materials is a never-ending challenge. New materials and production processes open up new opportunities in manufacturing and the use of machines, accessories and consumables. Lightweight design, durability, avoidance of contaminants, recyclability and costs – standards that Kärcher takes into account in the manufacture of efficient and eco-friendly products.



## Reduced CO<sub>2</sub> emissions

Reducing CO<sub>2</sub> greenhouse gas emissions is a global objective. To reduce its CO<sub>2</sub> footprint, Kärcher is making its contribution on all levels of production and in all business areas: through optimised use of materials, energy and water, high recyclability, as well as self-generated renewable energy.



## High recyclability

Raw materials that cannot be avoided from the beginning must be recyclable as far as possible after a long machine life. Kärcher machines are currently more than 90% recyclable.



## Optimised company processes

Kärcher eco!efficiency simply means continuously trimming all processes in the company to achieve maximum efficiency. This results in constant optimisation in all areas.



**Extended service life**

The robust construction style and high strength are the key prerequisites for a long usage phase. High quality, reparability and a long-term spare parts supply ensure that Kärcher Professional machines give years of reliable service.



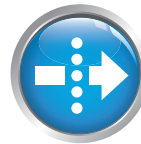
**Precisely dosed cleaning agent**

The most environmentally friendly and economical cleaning agent is that which is not used. Kärcher DOSE technology enables exact dosage of cleaning agents and, as a result, achieves a much lower level of consumption.



**Reduced use of materials**

If there is one art that is efficient, it is the art of reduction. Less material consumption through optimised designs is one aspect. Another is reducing the number of components. On average, Kärcher machines consist of significantly fewer components than comparable competitor models. The resulting lighter weight not only saves driving energy, it also saves a serious amount of raw materials and energy in manufacture.



**Effective dust filtering**

Dust is a nuisance to people and the environment and can be detrimental to health and the environment. Kärcher vacuums feature efficient filter systems with innovative components, e.g. Tact and Tact² systems for fully automatic filter cleaning as well as HEPA filters for hygienically clean, particle-free exhaust air. Fleece filter bags with a better degree of separation, double the retention capacity and a longer service life compared to paper filter bags. And last, but not least, certified safety vacuum cleaners for critical applications.



**Comprehensive spare parts supply**

Durable investment goods can only fully develop their economical and environmental advantages if all spare parts are available until the end of their service life. Depending on the particular product, Kärcher guarantees a spare parts supply for up to 10 years after a model goes out of production.



**Measurable time saving**

The simple equation of time equals money is still valid, however multiplied by the efficiency factor. More efficient machines that allow work to be carried out more quickly lead to significant labour cost savings and genuine competitive advantages.



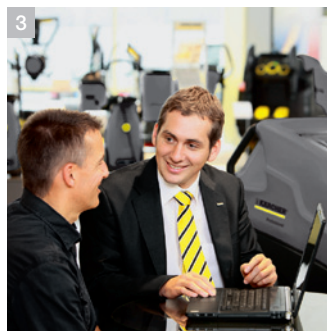
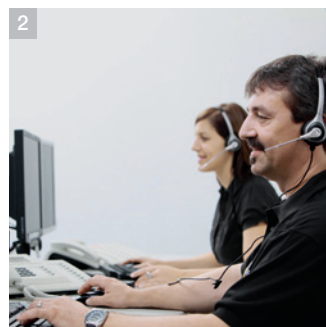
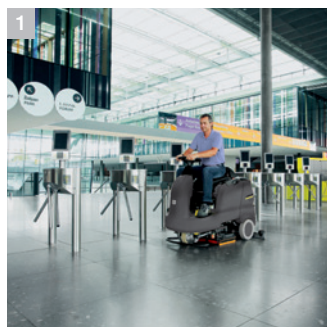
**Less waste water pollution**

It is as easy as it sounds: water that has not been used, does not need to be disposed of. At the same time, dirty water should be concentrated in order to make work easier for sewage treatment plants. The Kärcher system, consisting of the device, accessories and cleaning agents is fine-tuned to achieve maximum effect with minimum effort.



# Kärcher service – you can count on us.

If the word service is a promise and not a slip of the tongue, trust is the basis. Because you must be able to rely on your professional cleaning machines at all times. Day after day. Night after night. Everywhere. This is our aim. And we do our best to ensure this. Reliable cleaning machines and cleaning agents. Advanced technologies. Competent advice and training. And much more. Right to the point: Kärcher Service. A name you can trust. And a service that gives you security. That's our promise.



## We're there for you, wherever you need us.

Kärcher stands for top performance – not just in products, but also in service. As the world's largest manufacturer of cleaning machines, we are there for our customers all around the world and at more than 50,000 service and sales points. This is how we give you peace of mind. Kärcher – your reliable partner.

### 1 Planning

Kärcher also provides sound advice for your detailed project and property planning. We calculate exactly which resources you need and how you can configure your machines and equipment for optimal results.

### 2 Hotline\*

Friendly. Competent. Solution-oriented. Kärcher hotline staff are familiar with all products, accessories and cleaning agents and can provide sound advice and assistance by telephone.

### 3 Service contracts

Consistently high performance: with our service contracts you can be assured that your Kärcher products will operate reliably at all times, thanks to regular inspection and maintenance or an all-inclusive full service package.

### 4 Application advice

We provide application advice to ensure that you always have the most efficient solution. Area, staff and schedule are the decisive factors in determining the products that best suit your needs.



**5 Global presence**

Kärcher guarantees you personal service. Our global service and sales network ensures that you always have a competent contact partner locally, for all enquiries regarding service, advice or sales.

**6 Technical training**

Get the most out of your equipment: with our local technical training courses, we can show your employees how to use innovative Kärcher products to clean every type of facility optimally.

**7 We come to you**

Our service management system saves you time and money and ensures that we are with you as quickly as possible. With regular service calls as part of the full service package, and always whenever you need us.

**8 Extended warranty**

Guarantees a long service life. Our extended warranty or machinery breakdown insurance will give you peace of mind and ensure that your Kärcher products have optimal cover.

**9 Leasing**

Control your cash flow and remain productive with low leasing fees instead of major investments. Including a maintenance contract if required.

**10 Rental machines**

Stay as flexible as the market – with Kärcher rental machines you always have the equipment you really need, when you actually need it. Contact us to discuss your options.

**11 Refurbished machines**

Machines in top condition at very attractive terms. A new machine is not always cost-effective. Refurbished Kärcher machines are a cost-effective alternative for your project planning.

# Enthusiasm. Innovation. Success.

Since its beginnings more than 75 years ago, as a value-oriented family business, Kärcher has become a world brand with three strong attributes: top performance, innovation and quality. Today, the Kärcher brand enjoys the reputation of being a global leader and resource-conserving supplier of professional cleaning systems and is synonymous with reliable products, optimal user value and ongoing commitment to the environment, culture and sport.



**1 Seattle's highest building: the Space Needle**  
A Kärcher team pressure-washed the structure up to a height of 184 m. The job took eight weeks, working only at night.



**2 A facelift for the heads of state**  
Clean again: In 2005 Kärcher cleaned the National Memorial on Mount Rushmore.

**3 Innovative right from the start**  
In 1950, Kärcher developed the first hot water high-pressure cleaner in Europe for professional cleaning.



#### 4 Clean environment

Kärcher works on environmental protection every day, with new products, technologies and investments in production facilities.

#### 5 In-house research and development

Kärcher develops high-performance cleaning devices, accessories and special cleaning and care products.

#### 6 Internationally represented

We are there for our customers all around the world.

#### 7 Commitment to sports

Clean performance on the pitch. For several years, Kärcher has supported German and international football as a partner.

**Please contact us for more information:****Head Office Germany**

Alfred Kärcher GmbH & Co. KG  
Alfred-Kärcher-Straße 28-40  
71364 Winnenden

Phone +49 7195-14-0  
Fax +49 7195-14-2212  
[www.kaercher.com](http://www.kaercher.com)

**North America**

Kärcher North America  
750 W. Hampden Avenue  
Suite 400  
Englewood, CO 80110  
U.S.A.

Phone +001 303-738-2400  
Fax +001 303-738-2818  
[www.karcherna.com](http://www.karcherna.com)

**United Kingdom**

Kärcher (UK) Ltd.  
Kärcher House  
Beaumont Road  
Banbury  
Oxon OX16 1TB

Phone +44 1295-752-100  
Fax +44 1295-752-103  
[www.karcher.co.uk](http://www.karcher.co.uk)

**Ireland**

Kärcher Ltd.  
C1 Centrepoint Business Park  
Oak Road  
Dublin 12

Phone +353 1-409-7777  
Fax +353 1-409-7775  
[www.karcher.ie](http://www.karcher.ie)

**Regional Head Office****Southeast Asia**

Kärcher South East Asia  
Pte. Ltd.  
5 Toh Guan Road East,  
#01-00 Freight Links  
Express Distripark,  
Singapore 608831

Phone +65 68971811  
Fax +65 68971611  
[www.karcher.com.sg](http://www.karcher.com.sg)

**Hong Kong**

Kärcher Ltd.  
Unit 10, 17/F, APEC Plaza  
49 Hoi Yuen Rd.,  
Kwun Tong, KLN

Phone +852 2-357-5863  
Fax +852 2-357-5632  
[www.karcher.com.hk](http://www.karcher.com.hk)

**Australia**

Kärcher Pty. Ltd.  
40 Koornang Road  
Scoresby VIC 3179  
Melbourne, Victoria

Phone +61 3-9765-2300  
Fax +61 3-9765-2399  
[www.karcher.com.au](http://www.karcher.com.au)

**New Zealand**

Kärcher Ltd.  
66 Allens Road  
East Tamaki  
Auckland

Phone +64 9-274-4603  
Fax +64 9-274-6932  
[www.karcher.co.nz](http://www.karcher.co.nz)

**South Africa**

Kärcher Pty. Ltd.  
144 Kuschke Street  
Meadowdale  
Edenvale  
1614  
South Africa

Phone +27 11-574-5360  
Fax +27 11-454-4682  
[www.karcher.co.za](http://www.karcher.co.za)

**United Arab Emirates**

Kärcher FZE  
P.O. Box 17416  
Plot No S-10104, South Zone  
Jebel Ali Free Zone, Dubai

Phone +971 4-886-1177  
Fax +971 4-886-1575  
[www.kaercher.com](http://www.kaercher.com)