



## Efficient Cleaning Solutions.





## For a clean working environment.

Logistics is all about timing and precise coordination. The necessity of cleaning storage areas, vehicles and offices should not interfere with schedules. Solutions are needed that are not an additional burden, but help to clean quickly and efficiently. This is where Kärcher can help – with high-performance cleaning systems, sound advice and excellent service – to keep your business on track in a clean working environment.

**1 Partner for logistics companies**  
Kärcher is your partner for tailor-made solutions. Put your trust in Kärcher quality, efficiency and service.





## **2 Warehouses and cargo handling areas**

Whether for indoor or outdoor storage areas: Kärcher has the right solution for every task, for fast and effective cleaning.

## **3 Commercial vehicle and tank cleaning**

Fast manual wash systems, single-brush wash systems, automatic commercial vehicle wash and tank cleaning systems. There is a clean solution for every type of vehicle.

## **4 Special applications and office cleaning**

Whether planes, ships or offices – Kärcher high-performance systems make cleaning easy.

## Kärcher – your reliable partner.

In the logistics sector, cleaning also requires coordinated processes. This demands not only for high-performance systems, but also for a consulting partner with expertise and experience. The final cleaning result depends not only on technical parameters, but also on other important factors, e.g. local conditions and types of vehicle. Kärcher will provide cleaning solutions tailored to your needs.



### **Reliable. Intelligent. Kärcher.**

You can rely on Kärcher – because our systems are all compatible and each product is rigorously tested. Kärcher systems are renowned for their reliability and suitability for numerous cleaning tasks.

Our machines are designed for ease of use without interrupting logistics processes. This allows quick and easy cleaning. Maintenance is simple and can be carried out without any previous knowledge.





#### 1 You can count on us

Heavy pallets, fast workflows – logistics is a tough working environment. This is why Kärcher develops cleaning solutions that are designed to last. All products are subject to intensive quality controls to ensure that they meet all requirements.

#### 2 Easy to use

Nothing is more time-consuming than machines that are difficult to operate. Kärcher avoids elaborate procedures to ensure trouble-free cleaning. For example with “Easy Operation”: just one control for all functions.



#### 3 Developed for more efficiency

Kärcher develops detergents that are compatible with its cleaning systems. They guarantee a powerful cleaning with low consumption. This avoids unnecessary costs and protects the environment through fewer contaminants.

#### 4 Everything from one source

If everything fits together, it's Kärcher. As a system provider, Kärcher not only offers innovative cleaning technology, but also detergent and water treatment systems. Matching accessories complete the range. The benefits: Everything is perfectly coordinated so that you can work even more efficiently.



# The best cleaning systems for warehouses.

The area of logistics is very busy – with a high cleaning demand. Packaging residues, waste paper and vehicle tyre marks can be removed quickly and effortlessly with high-performance and robust Kärcher scrubber driers, vacuum sweepers and wet and dry vacuum cleaners. These compact machines are designed for easy manoeuvrability. Numerous variants are available – from battery-operated drives to canopies.



## Scrubber driers

Whether walk-behind, stand-on or ride-on – floors are hygienically clean. Thanks to their compact size, you can even clean between high-bay racking.



## Vacuum sweepers

Economical, clean, fast and efficient on all surfaces. A wide range of machines for all requirements.



## Wet and dry vacuum cleaners

These vacuums effortlessly pick up all kinds of dirt. Whether dry, wet or liquid – Kärcher vacuum cleaners pick up everything.



## Cleaning and maintaining floors

Kärcher detergents are highly effective for quicker, easier and convenient cleaning.





### 1 Safe in tight spaces

Safe cleaning in narrow aisles and between high-bay racking – not a problem for Kärcher machines. Compact machines ensure maximum manoeuvrability and canopies provide the necessary safety. A high area performance of up to 12,000 m<sup>2</sup>/h and large battery capacities allow for extended periods of uninterrupted use.



### 2 Conveyor systems

Conveyor systems are constantly in motion – and therefore also continually lead to soiling. Whether packaging materials, slips of paper or grit from containers: Kärcher machines, e.g. compact wet and dry vacuum cleaners or walk-behind vacuum sweepers or scrubber driers, quickly remove all unwanted material without interrupting operation.

### 3 Cold storage

Sensitive hygienic areas require optimal consultation and a precise cleaning plan. Because bacteria, viruses and fungi are everywhere. With this in mind, Kärcher offers the appropriate cleaning and disinfectant agents. Your complete solution from one source.

# Great performance on large areas.

Outdoor areas are not only subject to dirt produced in daily work operations, but also to environmental influences. Vehicle deposits, mud, dust, rain and snow are easily removed with high-performance Kärcher machines. Ride-on sweepers with an area performance of up to 23,520 m<sup>2</sup>/h clean almost any area easily – and with high pressure cleaners and water flow rates of up to 1,300 l/h, even the most stubborn dirt is quickly removed.



## 1 Outdoor areas

On large areas, cleanliness is essential for safety. Continuous material handling and environmental influences demand fast and effective cleaning solutions. With the high area performance of Kärcher ride-on machines, large outdoor areas and storage areas are effortlessly cleaned without interrupting or delaying routine logistics procedures.

Where wood is chopped, splinters must fall. Even in timber yards and steel storage areas, the residues of daily work can be quickly removed with Kärcher vacuum sweepers. Ride-on machines are ideal for cleaning large areas or walk-behind machines for smaller spaces. Dangerous dusts can be safely removed with a large capacity industrial vacuum.



### Machine power

Ride-on sweepers offer a very large area performance. And thanks to four different drive variants, there is one for every cleaning task.



### High-pressure power

With high pressure and a high flow rate. And higher temperatures ensure greater cleaning efficiency. With the high performance of stationary machines.



### Suction power

Kärcher industrial vacuum cleaners for the toughest jobs: from compact vacuums for mobile use to superior class large capacity vacuums.





## 2 Pallet warehouses

When pallets have to be transported quickly and safely, cleanliness is vital. Because dirt is a stumbling block in routine operations. Kärcher sweepers are ideal for keeping outdoor storage areas constantly clean. Cleaning with Kärcher is quick, efficient and convenient.



## 3 Loading docks

Arrivals and departures, loading and unloading – the loading area is constantly in use. Dirt collects here on a daily basis. A Kärcher high-pressure cleaner is the right solution. It easily removes stubborn residues, gets into tight corners and cleans quickly.

### Variants

- C: = "compact", machines without traction drive
- W: = "walk-behind", machines with traction drive
- R: = "ride-on" machines
- Bp or BAT: battery powered
- Pack: battery and charger included
- I: industry
- P or B: petrol
- D: diesel
- Lpg: liquid petroleum gas
- CAT: catalytic converter
- Adv: advanced

> 50 m <sup>2</sup>	200 m <sup>2</sup>	300 m <sup>2</sup>
KM 35/5 C	KM 70/15 C KM 70/20 C	KM 70/30 C
Walk-behind sweepers		

600 m <sup>2</sup>	900 m <sup>2</sup>
KM 75/40 W	KM 85/50 W
Vacuum sweepers	

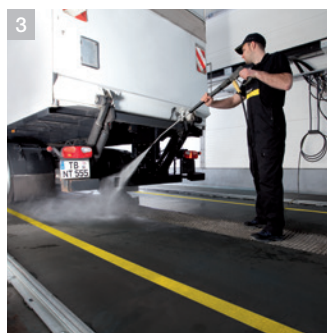
1300 m <sup>2</sup>	1500 m <sup>2</sup>	2500 m <sup>2</sup>	2500 m <sup>2</sup>	3500 m <sup>2</sup>	5000 m <sup>2</sup>	8000 m <sup>2</sup>
KMR 1000 T	KM 90/60 R	KM 100/100 R	KMR 1250	KM 120/150 R	KMR 1550 KM 130/300 R	KMR 1700 KM150/500 R KM 170/600 R
Ride-on vacuum sweepers						

### Economical in use

See how cost-effective cleaning can be. Area size, volume and cleaning frequency are decisive. The use of the following Kärcher sweepers and vacuum sweepers is cost-effective when the area to be swept per hour is as indicated in the performance columns on the left.

# Powerful performance for all kinds of commercial vehicles.

A clean fleet – to keep the move. Kärcher offers optimal systems for quick, easy and efficient cleaning of commercial vehicles, for example, the Kärcher TB. The gantry wash system for efficient vehicle cleaning. Kärcher offers mobile single-brush wash systems, suitable detergents and cost-saving water treatment systems. Kärcher meets all demands with ease.



## 1 Economical and efficient for large vehicle fleets

The wash system for regular maintenance of various commercial vehicles. Easy to operate, modular and with reliable technology. The Kärcher TB – fast, thorough, efficient.

## 2 Profitability for small vehicle fleets

Simple, quick and economical: the RBS 6000 mobile single-brush wash system. It is moved around the vehicle and the rotating brush effectively removes all dirt.

## 3 Cleaning couldn't be more thorough

Effortlessly clean difficult to reach areas: Kärcher high-pressure cleaners are ideal for cleaning wheel arches, vehicle chassis and spaces between cabs and trailers.

## 4 The right accessories for every task

Achieve more with Kärcher accessories, e.g. with the rotating wash brush. Driven by the power of the water jet, it gently removes fine dust and grime from all surfaces.



### Gentle brushes

Ideal for buses: the tried and tested Carlite®brush is gentle on paintwork.



### Easy to use

The Kärcher TB washing programs can easily be selected via the control.



### Perfect cleaning results

An effective chemical pre-spray system cleans with a high-pressure pump with up to 60 bar pressure



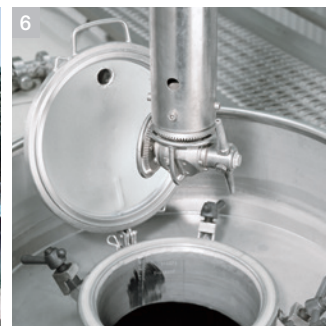
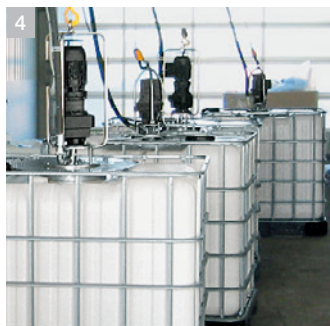
### Intelligent design

The aluminium RBS 6000 can easily be manoeuvred and the half screen prevents splashing.



# Customised tank cleaning solutions.

For more than three decades, Kärcher has enjoyed a reputation of being a provider of reliable, efficient and customised tank cleaning system solutions. Kärcher modular systems offer a choice of high-pressure pumps, cleaning heads and PLC control. Kärcher offers an all-inclusive service – from planning, construction and system maintenance.



## 1 A clean solution for every size

Liquids and solids, as well as hazardous products are reliably removed with these modular tank and silo container cleaning systems.

## 2 Cleaning in one pass

Tank wagons are cleaned on the inside with three-dimensional rotating nozzles. This Kärcher cleaning system cleans tank wagons up to a length of 24 m.

## 3 Maximum cleaning results

Kärcher standard components for cleaning light drums. Up to 200 bar pressure for excellent cleaning results.

## 4 Perfect results for standard sizes

The cleaning solution for IBC containers with different types of soiling. IB containers are thoroughly cleaned with water temperatures up to 90 °C.

## 5 Effective cleaning for long containers

Kärcher offers the perfect cleaning system for 20ft containers. Containers are thoroughly cleaned using suitable detergents.

## 6 Ideal for all kinds of dirt

Kärcher systems clean containers in all shapes and sizes and all types of soiling without leaving residues. Alkaline and acidic detergents from Kärcher are fully compatible with the system and ensure optimal cleaning results.

# For special applications: Kärcher solutions.

Kärcher offers special systems for planes, sea vessels or trains. Stubborn dirt is quickly removed. For example, with innovative ultra-high-pressure systems with up to 2,500 bar pressure or advanced ice blasters that are gentle on surfaces and hard on dirt. With Kärcher you are well equipped, even in extreme situations.



## 1 Ship and container cleaning

Whether algae or barnacles adhering to the hull or soiled containers on deck – the Kärcher UHP series gets everything ship-shape in no time. Even rust can easily be removed with the appropriate cleaning devices and special nozzles.



## 2 Ready for take-off in no time

Kärcher also offers innovative system solutions for gentle exterior and interior cleaning of planes.



## 3 One-stop solution for cleaning trains

Kärcher also offers a wide range of cleaning technologies for freight trains. The range includes high-performance machines, particularly gentle processes and extremely safe systems.



### Extremely gentle

**Iceblaster:** Innovative blasting process using dry ice for removing stubborn dirt without damaging surfaces.



### Extremely robust

**Cage machines:** High-performance to be used almost anywhere. With petrol engine – suitable for use where there is no mains supply.



### Incredibly strong

**Mobile UHP trailer:** Hot or cold water ultra-high-pressure cleaners with up to 2,500 bar pressure are suitable for almost any job.



# Office cleaning according to plan.

Kärcher offers the perfect office cleaning solution – from basic cleaning to polishing. Kärcher machines are easy to use, whisper quiet and safe. A wide range of accessories extend the range of applications. ECO!Cleaning is the choice of professionals. A complete system designed to optimise contract cleaning.



## 1 The innovative BRC series

From refreshing interim cleaning to intensive basic cleaning of textile coverings. Kärcher offers everything from a single source.

## 2 Dry vacuuming like a professional

Developed with contract cleaners, this professional series offers the benefits of high suction power and a 5-stage filter system.

## 3 ECO!Cleaning and suitable detergents

Specially developed to facilitate contract cleaning: increases productivity, reduces costs and protects the environment. Kärcher detergents are ideal for cleaning without damaging surfaces.

## 4 Removes dirt deep in the pile

Ideal for passageways and offices with carpet: deep cleaning with Kärcher upright vacuum cleaners.

## 5 Mobile cleaners

Easy to use, robust and powerful carpet cleaners feature an extensive range of accessories for numerous tasks.



### Upright vacuum cleaners

Powerful suction combined with an electric brush. Effortlessly removes stubborn dirt particles.



### Carpet cleaners

Kärcher carpet cleaners provide excellent cleaning results on textile surfaces. Whether in offices, corridors, conference rooms, etc. The right solution for all areas.



### Dry vacuum cleaners

Compact and extremely quiet: Small, mobile dry vacuum cleaners combine convenience, powerful suction and a large working radius.



### Spray extraction cleaners

Ideal for thoroughly cleaning all textile surfaces by spray extraction – powerful and versatile.

# List of products.

Application	Cleaning machines			
	High-pressure cleaning	Sweepers and vacuum sweepers	Vacuum cleaners	
Storage area cleaning		KM 70/30 W Bp Pack, KM 75/40 W Bp Pack, KM 85/50 W Bp Pack/Adv, KM 90/60 R Bp Pack, KM 100/100 R Bp Pack / LPG, KM 120/150 R Bp Pack / LPG, KM 130/300 R Bp, KM 150/500 R Bp	T 10/1 Professional, T 12/1, T 17/1, NT 35/1 Tact M, NT 45/1 Tact Te EC, NT 45/1 Tact, NT 55/1 Tact, NT 65/2, NT 70/2 Tc, NT 65/2 Tact², NT 35/1 Ap, NT 70/2 / Me / Tc, NT 70/3 / Me / Tc	
Office cleaning			KM 35/5 C, KM 75/40 W Bp Pack (Carpet Kit)	T 7/1, T 10/1 Professional, T 12/1, T 17/1, CV 38/2
Cleaning outdoor areas		HD 6/16-4 MX Plus, HD 7/18-4 MX Plus, HD 9/20-4 MX Plus, HD 13/18-4 S / SX Plus, HDS 8/18-4 M / MX, HDS 12/18-4 S / SX, HDS 13/20-4 S / SX, HDS 2000 Super, HD 13/12-4 ST-H, HDC Classic / Adv	KM 70/20 C, KM 70/30 C Bp Pack Advanced, KM 75/40 W P, KM 90/60 R P, KM 100/100 R D / P / LPG, KM 120/150 R D / P / LPG, KM 130/300 R D / LPG, KM 150/500 R D / LPG, KM 170/600 R D / LPG, MC 50	NT 55/1 Tact, NT 70/2 (Me) Tc
Commercial vehicle cleaning		HD 6/16-4 MX Plus, HD 9/20-4 MX Plus, HD 13/18-4 S / SX Plus, HDS 9/18-4 M / MX, HDS 12/18-4 S / SX, HDS 13/20-4 S / SX, HDS 2000 Super		NT 65/2, NT 70/2 / Me / Tc



Scrubber driers	Vehicle wash systems	Detergents	Tank cleaning	Water recycling	Sprayextractioncleaner /Carpet cleaner
					
B 40 C/W, BD 50/40 RS, B 60 W Bp Pack + R 65, B 80 W Bp Pack Dose + R 75, BR 55/40 RS Bp / Pack B 95 RS Bp Pack + R 65, BD 60/95 RS Bp Pack, B 90 R + R 75, B 140 R + R 90, BR/BD 100/250 R Bp Pack, BR 100/250 R I Bp Pack, BR/BD 120/250 R Bp Pack, BR 120/250 R I Bp Pack		RM 752, RM 740, RM 781, RM 69 ASF, RM 751, RM 776, RM 750			
Clean Liner Classic, Eco Spray Mop, BR 30/4 C, BR 40/10 C, BD 40/12 C, BR 40/25 C, BRS 43/500 C, BRC 30/15 C		RM 780, RM 746, RM 748, RM 730, RM 743, RM 760, RM 768, RM 755, RM 764, RM 720, RM 724, RM 736, RM 738			Puzzi 8/1, Puzzi 100 Super, Puzzi 200, Puzzi 300 S, Puzzi 400 K
BR/BD 100/250 Bp					
	RBS 6012, RBS 6014, TB 36, TB 42, TB 46, TB 50	RM 760, RM 804, RM 805 ASF, RM 811 ASF, RM 821 ASF, RM 833, RM 800 ASF, RM 801 ASF, RM 841 ASF	Module-based systems: HDI 38/12, SHD-R 3000, HWE 4000, HKF 50, HKS 100, HKF 200	WRP 1000, WRP 8000, WRP 16000	Puzzi 8/1, Puzzi 100 Super, Puzzi 200, Puzzi 300 S, Puzzi 400 K

# Technical data at a glance.

## Cold water high-pressure cleaners

	Power supply (phases)	Power rating (kW)	Flow rate (l/h)	Max. pressure (bar/MPa)	Working pressure (bar/MPa)
<b>HD middle class</b>					
HD 6/16-4 MX Plus	1	3,4	230-600	190/19	30-160/3-16
HD 7/18-4 MX Plus	3	5,0	240-700	215/21,5	30-180/3-18
HD 9/20-4 MX Plus	3	7,0	460-900	220/22	40-200/4-20
<b>HD super class</b>					
HD 13/18-4 S / SX Plus	3	9,2	650-1300	198/19,8	30-180/3-18
<b>Stationary high-pressure cleaners for use with unheated water (70- 85°C)</b>					
HD 13/12-4 ST	3	4,4	300-700	190/19	30-160/3-16

## Hot water high-pressure cleaners

	Power supply (phases)	Power rating (kW)	Flow rate (l/h)	Working pressure (bar/MPa)	Max. temperature (°C)
<b>HDS middle class</b>					
HDS 8/18-4 M / MX	3	5,5	400-800	30-180/3-18	80/155
HDS 9/18-4 M / MX	3	6	300-800	30-180/3-18	80/155
<b>HDS super class</b>					
HDS 12/18-4 S / SX	3	8,4	600-1200	30-180/3-18	80/155
HDS 13/20-4 S	3	9,3	650-1300	30-200/3-20	80/155
HDS 2000 Super	3	2x6,7	800-1850	30-180/3-18	80/98

## Industrial high-pressure cleaning systems

	Max. pressure (bar)	Output (l/h)	Heating capacity (kW)	Max. supply temperature (°C)	Power rating (kW)
<b>Stationary ultra-high-pressure cleaners (industrial)</b>					
HDC Classic	160/80	700-2000	-	85/60	11/5,5
HDC Advanced	100	700-12000	-	85/60	11-44

## Sweepers/vacuum sweepers

	Traction drive	Power (HP)	Working width (mm)	Waste container (l)	Hydraulic container lift
<b>Vacuum sweepers</b>					
MC 50	4WD	20	1100-1400	500	■
■ Included					

## Sweepers/vacuum sweepers

	Working width without / with 1 / with 2 side brushes (mm)	Waste container (l)	Max. area performance (m²/h)	Indoor use	Outdoor use
<b>Walk-behind sweepers</b>					
KM 35/5 C	350/-/-	5	1480	■	■
KM 70/20 C	480/700/-	42	2800	■	■
KM 70/30 C Bp Pack Adv	480/700/-	42	2800	■	■
<b>Vacuum sweepers</b>					
KM 75/40 W Bp Pack	550/750/-	40	3375	-	■
KM 75/40 W P	550/750/-	40	3375	■	-
KM 85/50 W Bp Pack/Adv	610/850/1050	50	4725	■	■
<b>Ride-on vacuum sweepers</b>					
KM 90/60 R Bp Pack	615/900/1150	60	6900	■	■
KM 90/60 R P	615/900/1150	60	9200	-	■
KM 100/100 R (Lpg / Bat)	700/1000/1300	100	10400	■	■
KM 120/150 R Bp Pack	850/1200/-	150	7200	■	■
KM 120/150 R (Lpg/D/P/Bat)	850/1200/-	150	9600	■	■
KM 130/300 R	1000/1300/1150	300	9100-13000	■	■
KM 130/300 R Bp	1000/1300/1550	300	9100	■	■
KM 150/500 R	1200/1500/1800	500	12000-18000	■	■
KM 150/500 R Bp	1200/1500/1800	500	13000	■	■
KM 170/600 R	1350/1680/2000	600	23520	■	■
■ Included					

## Dry vacuum cleaners

	Air flow rate (l/s)	Vacuum (mbar/kPa)	Max. power rating (W)	Sound level (dB(A))
<b>Dry vacuum cleaners</b>				
T 7/1	54	245/24,5	1200	65
T 10/1 Professional	61	244/24,4	1250	63
T 12/1	61	244/24,4	1300	61
T 17/1	61	244/24,4	1300	61
<b>Upright vacuum cleaners</b>				
CV 38/2	48	250/25	1200	67

## Wet and dry vacuum cleaners

	Air flow rate (l/s)	Vacuum (mbar/kPa)	Max. power rating (W)	Sound level (dB(A))
<b>Standard class</b>				
NT 70/2	2 x 56	208/20,8	2400	75
NT 70/2 Tc	2 x 56	208/20,8	2400	75
NT 70/2 Me Tc	2 x 56	208/20,8	2400	75
<b>Ap class</b>				
NT 35/1 Ap	61	230/23	1380	67
NT 65/2 Eco	2 x 56	235/23,5	2750	74
NT 65/2 Ap	2 x 74	254/25,4	2760	73
<b>Tact class</b>				
NT 45/1 Tact	61	230/23	1380	67
NT 45/1 Tact Te Ec	62	245/24,5	1380	71
NT 55/1 Tact	61	230/23	1380	67
NT 65/2 Tact²	2 x 74	254/25,4	2760	73
NT 65/2 Tact² Tc	2 x 74	254/25,4	2760	73



## Scrubbers/scrubber driers

	Brush / suction working width (mm)	Theoretical working capacity (m <sup>2</sup> /h)	Practical working capacity (m <sup>2</sup> /h)	Fresh / dirty water tank (l)
<b>Compact scrubber driers</b>				
BR 30/4 C	300 / 300	200	130	4 / 4
BR 40/10 C	400 / 400	400	300	10 / 10
BD 40/12 C	385 / 450	1100	750	12 / 12
BR 40/25 C Ep	440 / 770	1600	1100	25 / 25
<b>Walk-behind scrubber driers</b>				
B 40 C/W	430–550/850	1700–2200	–	40 / 40
B 60 W	510–650/850	2040–2600	–	66 / 60
B 80 W	650–750/940	–	1950–2250	80 / 80
<b>Scrubber driers step-on</b>				
BD 50/40 RS Bp / Pack	508 / 691	2200	1650	40 / 40
BR 55/40 RS Bp / Pack	550 / 716	2350	1765	40 / 40
B 95 RS Bp Pack	550–750 / 770–850	3500/4100	2625/3075	95 / 95
BD 60/95 RS Bp Pack	600 / 830	3300	2475	95 / 95
<b>Ride-on scrubber driers</b>				
B 90 R	550–750	3300–4500	2475–3375	90 / 90
B 140 R	750–900/940–1060	4500–5400	3375–4050	140 / 140
BR/BD 100/250 R Bp Pack	1000 / 1160	6000	4500	250 / 250
BR 100/250 R I Bp Pack	1000 / 1160	6000	4500	250 / 250
BR 120/250 R Bp / Pack	1200 / 1400	7200	5400	250 / 250
BD 120/250 R Bp / Pack	1200 / 1400	7200	5400	250 / 250

## Manual cleaning equipment

<b>ECO!Cleaning</b>	
Clean Liner Classic	with mop press, bin liner holder and bucket
Eco spray mop system	with detachable tank and folding tray

## Vehicle cleaning, water reclamation

	Washing height (mm)	Fresh water supply (l/min, bar)	Connected load (kW)	Power supply (~ / V / Hz)
<b>Commercial vehicle washes</b>				
RBS 6012	3648	min. 80, 4–6	1,15	variable
RBS 6014	4205	min. 80, 4–6	1,15	variable
TB 36	3600	100, 4–6	5,3	3/400/50
TB 42	4250	100, 4–6	5,3	3/400/50
TB 46	4600	100, 4–6	5,3	3/400/50
TB 50	5050	100, 4–6	5,3	3/400/50
	Reclaimed water production (l/h)	Power supply (~ / V / Hz)	Buffer tank capacity (l)	Dimensions L x W x H (mm)
<b>Water reclamation</b>				
WRP 1000 Classic	max. 1000	–	–	600x450x1100
WRP 8000/16000	max. 3000	1/230/50	1000–3000	–

## Vehicle cleaning, water reclamation

	Throughput (l/h)	Max. pressure (bar)	Max. temperature (°C)	Electric drive (~ / V / Hz / kW)	Weight (kg)
<b>Container interior cleaning systems</b>					
Based on modular components, Kärcher container interior cleaning systems are designed, according to your requirements, with energy and operational costs in mind. Kärcher will impress you with innovative concepts and a comprehensive service. Range of the available modular components:					
HP pump HDI 38/12	3800	120	80	3/400/50/15,5	220
HWE 4000 Gas*	2000–6000	140	90	1/230/50/0,75	550
Spray head HKF 50 P	1200	100	95	–	7
Spray head HKS 100	2400–6000	40–100	80	–	6
Spray head HKF 200 E	10000	200	95	3/400/50	35
*Hot water generator					

## Carpet cleaning machines, steam cleaner

	Deep / interim cleaning area performance (m <sup>2</sup> /h)	Brush working width (mm)	Suction working width (mm)	Fresh / dirty water tank (l)
<b>Carpet cleaning machines</b>				
BRC 30/15 C	100 / –	270	315	15 / 15
BRS 43/500 C	– / 300	430	–	7,5 / –
Puzzi 8/1 C	12–18	–	–	8 / 7
Puzzi 100 Super	20–25	–	–	10 / 9
Puzzi 200	30–45	–	–	10 / 9
Puzzi 300 S	40–55	–	–	45 / 18
Puzzi 400 K	50–90	–	–	40 / 18

# eco!efficiency: Achieve more with less.

If you want to move and change things, you have to point the way. And show your colours. The blue symbols representing the various building blocks of Kärcher eco!efficiency show at a glance how and where Kärcher's power of innovation achieves measurably greater and better efficiency for customers, products and the environment. Kärcher eco!efficiency is implemented in all business areas and is an integral part of corporate policies and actions.



## Reduced water consumption

Drinking water is precious and conserving it protects natural resources and saves energy for processing, transport and disposal. Many Kärcher high pressure cleaners and scrubber driers already meet the eco!efficiency standard or feature an eco!efficiency mode, which efficiently regulates the amount of water depending on the cleaning task.



## Intelligent energy efficiency

Everything has its limits. Sometimes more power does not make sense. The T 12/1 eco!efficiency dry vacuum cleaner proves that less can be more. Its 750 W motor uses 40% less electricity, achieving 98 % of the cleaning performance of the standard model thanks to flow-optimised suction channels, which is more than sufficient for maintenance cleaning.



## Materials to suit the job

The selection of optimal materials is a never-ending challenge. New materials and production processes open up new opportunities in manufacturing and the use of machines, accessories and consumables. Lightweight design, durability, avoidance of contaminants, recyclability and costs - standards that Kärcher takes into account in the manufacture of efficient and eco-friendly products.



## High recyclability

Raw materials that cannot be avoided from the beginning must be recyclable as far as possible after a long machine life. Kärcher machines are currently more than 90 % recyclable.



## Less noise

Noise is not just unpleasant, it has shown to be damaging to health. Kärcher counters working noise both in its own production processes and for users by reducing noise levels and power to an optimum level. An example of this is the T 12/1 eco!efficiency dry vacuum cleaner, the working noise level of which has been reduced by 5 dB(A) compared to the standard model, which corresponds to a reduction in volume of more than 50 %. Furthermore, the low frequency of the work noise is subjectively perceived as being very pleasant. As a result, the T 12/1 eco!efficiency is also outstandingly suitable for longer work intervals and noise-sensitive areas.



## Exemplary reparability

As early as the development phase, Kärcher machines are designed for reparability: as few components and assemblies as possible, the best possible accessibility and as many standard parts as possible.



## Reduced CO<sub>2</sub> emissions

Reducing CO<sub>2</sub> greenhouse gas emissions is a global objective. To reduce its CO<sub>2</sub> footprint, Kärcher is making its contribution on all levels of production and in all business areas: through optimised use of materials, energy and water, high recyclability, as well as self-generated renewable energy.



## Optimised company processes

Kärcher eco!efficiency simply means continuously trimming all processes in the company to achieve maximum efficiency. This results in constant optimisation in all areas.





#### Extended service life

The robust construction style and high strength are the key prerequisites for a long usage phase. High quality, reparability and a long-term spare parts supply ensure that Kärcher Professional machines give years of reliable service.



#### Precisely dosed cleaning agent

The most environmentally friendly and economical cleaning agent is that which is not used. Kärcher DOSE technology enables exact dosage of cleaning agents and, as a result, achieves a much lower level of consumption.



#### Reduced use of materials

If there is one art that is efficient, it is the art of reduction. Less material consumption due to optimised designs is one aspect. Another is reducing the number of components. On average, Kärcher machines consist of significantly fewer components than comparable competitor models. The resulting lighter weight not only saves driving energy, it also saves a serious amount of raw materials and energy in manufacture.



#### Effective dust filtering

Dust is a nuisance to people and the environment and can be detrimental to health and the environment. Kärcher vacuums feature efficient filter systems with innovative components, e.g. Tact and Tact<sup>2</sup> systems for fully automatic filter cleaning as well as HEPA filters for hygienically clean, particle-free exhaust air. Fleece filter bags with a better degree of separation, double the retention capacity and a longer service life compared to paper filter bags. And last, but not least, certified safety vacuum cleaners for critical applications.



#### Comprehensive spare parts supply

Durable investment goods can only fully develop their economical and environmental advantages if all spare parts are available until the end of their service life. Depending on the particular device, Kärcher guarantees a spare parts supply for up to 10 years after a model goes out of production.



#### Measurable time saving

The simple equation of time equals money is still valid, however multiplied by the efficiency factor. More efficient machines allowing work to be carried out more quickly lead to significant labour cost savings and genuine competitive advantages.

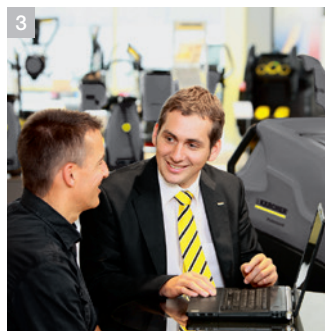
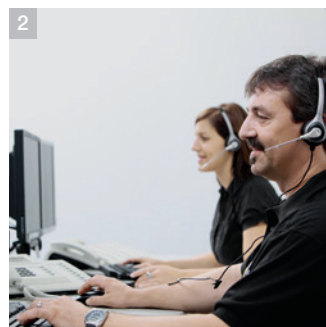
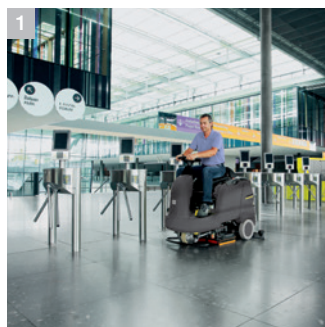


#### Less waste water pollution

It is as easy as it sounds: water which has not been used, does not need to be disposed of. At the same time, dirty water should be concentrated in order to make work easier for sewage treatment plants. The Kärcher system, consisting of the device, accessories and cleaning agents is fine-tuned to achieve maximum effect with minimum effort.

# Kärcher service – you can count on us.

If the word service is a promise and not a slip of the tongue, trust is the basis. Because you must be able to rely on your professional cleaning machines at all times. Day after day. Night after night. Everywhere. This is our aim. And we do our best to ensure this. Reliable cleaning machines and detergents. Advanced technologies. Competent advice and training. And much more. In short: Kärcher service. A name you can trust. And a service that gives you security. That's our promise.



## We're there for you, wherever you need us

Kärcher stands for top performance – not just in products, but also in service. As the world's largest manufacturer of cleaning machines, we are there for our customers all around the world and at more than 50,000 service and sales points. This is how we give you peace of mind. Kärcher – your reliable partner.

### 1 Planning

Kärcher also provides sound advice for your detailed project and property planning. We calculate exactly which resources you need and how you can configure your machines and equipment for optimal results.

### 2 Hotline\*

Friendly. Competent. Solution-oriented. Kärcher hotline staff are familiar with all products, accessories and detergents and can provide sound advice and assistance by telephone.

### 3 Service contracts

Consistent top performance: with our service contracts you can be assured that your Kärcher products will operate reliably at all times, thanks to regular inspection and maintenance or an all-inclusive full service package.

### 4 Application advice

We provide application advice to ensure that you always have the most efficient solution. Area, staff and schedule are the decisive factors in determining the products that best suit your needs.





#### 5 Global presence

Kärcher guarantees you personal service. Our global service and sales network ensures that you always have a competent contact partner locally, for all enquiries regarding service, advice or sales.

#### 6 Technical training

Get the most out of your equipment: with our local technical training courses, we can show your employees how to use innovative Kärcher products to clean every type of facility optimally.

#### 7 We come to you

Our service management system saves you time and money and ensures that we are with you as quickly as possible. With regular service calls as part of the full service package, and always whenever you need us.

#### 8 Extended warranty

Our extended warranty or machinery breakdown insurance will give you peace of mind and ensure that your Kärcher products have optimal cover.

#### 9 Leasing

Control your cash flow and remain productive with low leasing fees instead of major investments. Including a maintenance contract if required.

#### 10 Rental machines

Stay as flexible as the market – with Kärcher rental machines you always have the equipment you really need, when you actually need it. Contact us to discuss your options.

#### 11 Refurbished machines

Machines in top condition at very attractive terms. A new machine is not always cost-effective. Refurbished Kärcher machines are a cost-effective alternative for your project planning.

# Enthusiasm. Innovation. Success.

Since its beginnings more than 75 years ago, as a value-oriented family business, Kärcher has become a world brand with three strong attributes: top performance, innovation and quality. Today, the Kärcher brand enjoys the reputation of being a global leader and resource-conserving supplier of professional cleaning systems and is synonymous with reliable products, optimal user value and ongoing commitment to the environment, culture and sport.



**1 Seattle's highest building: the Space Needle**  
A Kärcher team pressure-washed the structure up to a height of 184 m. The job took eight weeks, working only at night.



**2 A facelift for the heads of state**  
Clean again: In 2005 Kärcher cleaned the National Memorial on Mount Rushmore.



**3 Innovative right from the start**  
In 1950, Kärcher developed the first hot water high-pressure cleaner in Europe for professional cleaning.





#### 4 Clean environment

Kärcher works on environmental protection every day, with new products, technologies and investments in production facilities.

#### 5 In-house research and development

Kärcher develops high-performance cleaning devices, accessories and special cleaning and care products.

#### 6 Internationally represented

We are there for our customers all around the world.

#### 7 Commitment to sports

Clean performance on the pitch. For several years, Kärcher has supported German and international football as a partner.



**makes a difference**

**Please contact us for more information:**

**Head Office Germany**

Alfred Kärcher GmbH & Co. KG  
Alfred-Kärcher-Straße 28-40  
71364 Winnenden

Phone +49 7195-14-0  
Fax +49 7195-14-2212  
[www.kaercher.com](http://www.kaercher.com)

**United Kingdom**

Kärcher (UK) Ltd.  
Kärcher House  
Beaumont Road  
Banbury  
Oxon OX16 1TB

Phone +44 1295-752-100  
Fax +44 1295-752-103  
[www.karcher.co.uk](http://www.karcher.co.uk)

**Regional Head Office**

**Southeast Asia**

Karcher South East Asia  
Pte. Ltd.  
5 Toh Guan Road East,  
#01-00 Freight Links  
Express Distripark,  
Singapore 608831

Phone +65 68971811  
Fax +65 68971611  
[www.karcher.com.sg](http://www.karcher.com.sg)

**Australia**

Kärcher Pty. Ltd.  
40 Koornang Road  
Scoresby VIC 3179  
Melbourne, Victoria

Phone +61 3-9765-2300  
Fax +61 3-9765-2399  
[www.karcher.com.au](http://www.karcher.com.au)

**South Africa**

Kärcher Pty. Ltd.  
144 Kuschke Street  
Meadowdale  
Edenvale  
1614  
South Africa

Phone +27 11-574-5360  
Fax +27 11-454-4682  
[www.karcher.co.za](http://www.karcher.co.za)

**North America**

Kärcher North America  
750 W. Hampden Avenue  
Suite 400  
Englewood, CO 80110  
U.S.A.

Phone +001 303-738-2400  
Fax +001 303-738-2818  
[www.karcherna.com](http://www.karcherna.com)

**Ireland**

Kärcher Ltd.  
C1 Centrepont Business Park  
Oak Road  
Dublin 12

Phone +353 1-409-7777  
Fax +353 1-409-7775  
[www.karcher.ie](http://www.karcher.ie)

**Hong Kong**

Kärcher Ltd.  
Unit 10, 17/F, APEC Plaza  
49 Hoi Yuen Road  
Kwun Tong, KLN

Phone +852 2-357-5863  
Fax +852 2-357-5632  
[www.karcher.com.hk](http://www.karcher.com.hk)

**New Zealand**

Karcher Ltd.  
66 Allens Road  
East Tamaki  
Auckland

Phone +64 9-274-4603  
Fax +64 9-274-6932  
[www.karcher.co.nz](http://www.karcher.co.nz)

**United Arab Emirates**

Karcher FZE  
P.O. Box 17416  
Plot No S-10104, South Zone  
Jebel Ali Free Zone,  
Dubai

Phone +971 4-886-1177  
Fax +971 4-886-1575  
[www.kaercher.com](http://www.kaercher.com)