

# KÄRCHER

makes a difference



## TOUGH ENOUGH FOR CONSTRUCTION

So clean that you could move into the bare structure

PROFESSIONAL | CONSTRUCTION INDUSTRY SOLUTIONS





**WHEN YOU GIVE YOUR ALL,  
YOU SHOULD ALSO BE ABLE  
TO GET THE MOST OUT OF IT.**



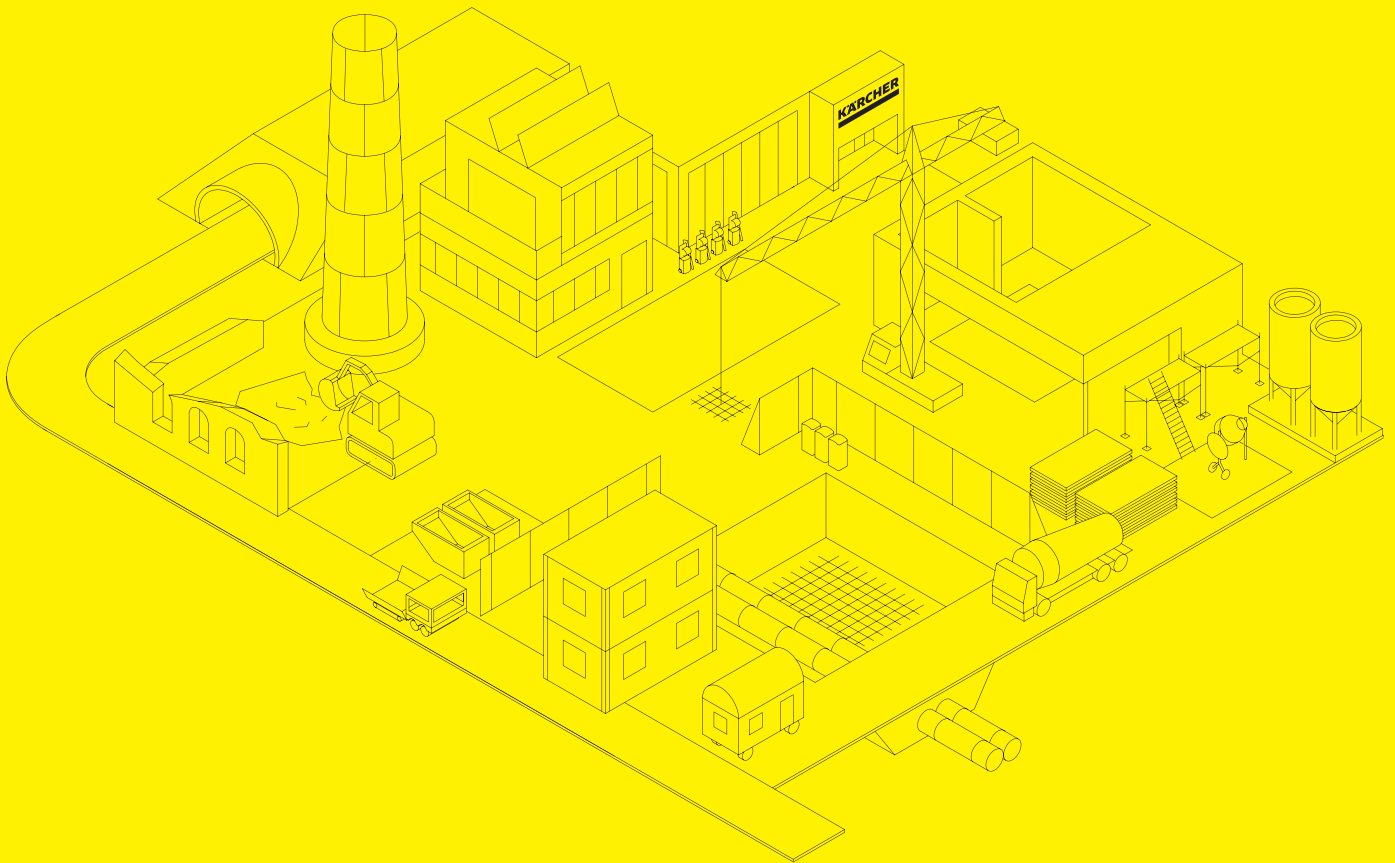


Rough, but from the heart. Tough and ready to confront difficult jobs head-on. This is what construction is like today, even if machines have made the work much easier. And these machines have to be powerful, robust and reliable. Therefore, as a professional, you also see your cleaning machines as tools which serve to retain the value of your large machinery and protect the health

of your employees. Our high-pressure and ultra high-pressure cleaners are at the cutting edge of technology when it comes to noise, weight and handling. Thanks to improved work safety, more effective cleaning, time savings and reduced downtime, you can achieve outstanding efficiency with your Kärcher cleaning appliances.



# ONLY THE BEST WILL DO.



**Structural and civil engineering, road construction, railway and network construction**

Do not lose any time removing stubborn dirt and in large quantities. With high-pressure and ultra high-pressure cleaners up to 3,000 bar, you can remove dirt deposits quickly and effectively, even without abrasives or cleaning agents.

**Workshops**

Expect convenience and safety: advanced technologies such as antistatic systems, automatic fill level monitoring, in-built exhaust monitoring, oil-resistant components and different dust class certifications are sure to meet all your requirements.

**Washing halls, wash bays**

Remove stubborn dirt, including concrete residues, from machines, vehicles, scaffolding and formwork: with high-pressure cleaners featuring cold or hot water operation in the appropriate performance class.

**Trades, interior construction**

Work quickly, comfortably and effectively. Kärcher cleaning appliances are largely zero-maintenance and come equipped with practical features, including a direct connection for power tools and the innovative Tact filter system for uninterrupted cleaning.

**Cleaning and renovation of facades and floors**

With our robust and innovative machines you will be able to tackle any type of dirt quickly, simply and efficiently.

**UHP for concrete restoration and demolition**

Extreme power: WOMA® ultra high-pressure cleaners are able to clean, mill and cut even concrete and steel with ease. And with maximum safety.

**Final cleaning**

Remove large quantities of dirt in both inside and outside areas: with Kärcher sweepers you are guaranteed efficiency and perfect cleaning results.

**Rental fleet**

You can count on us: with their robust construction style, solid bumpers and protective cage pipe frame, your Kärcher cleaning appliances can withstand the tough conditions on construction sites and are built to last.

**Deep cleaning and maintenance cleaning**

Take on any type of dirt. Vacuum dust, swarf and loose residues effortlessly with our powerful vacuum cleaners throughout buildings as well as in outside areas.

# YOUR STRONG TEAM



Cold water high-pressure cleaners

Scrubber driers

Wet and dry vacuum cleaners

Hot water high-pressure cleaners



What good is power without reliability? Why have robustness without safety? You need all of these features in a machine. In every machine. And guaranteed in every Kärcher Professional. We develop our machines in collaboration with professionals from the respective field. This means that you not only get a good machine, but the best machine for your requirements: powerful, robust, safe and reliable.



Sweepers



HDS trailers

# BANISH ENCRUSTED DIRT.



Some dirt can be difficult to tackle: concrete, paint and grout residues on facades, formwork and construction machines, for example. Our machines make it easy.

With our cold water and hot water high-pressure cleaners, you can remove stubborn dirt from everything on the construction site quickly and effortlessly. Water pressure and water volume are infinitely variable. This means that you can clean facades effortlessly without damaging the structure. And with the Surface Cleaner FR 30 Me with integrated suction device, you can clean floors up to 10 times faster than with conventional machines.

#### **Made for construction**

Take your Kärcher high-pressure cleaner anywhere. Depending on the size of the machine, it can be lifted onto scaffolding using the carrying handle or onto the roof by crane with the lifting hook. With a range of nozzle attachments, you will quickly find the right option for every task. With Servo Control, the water volume and pressure can be adjusted conveniently on the trigger gun. That means professional cleaning without interruption. With regular thorough cleaning of your construction machines, formwork and scaffolding, you can protect your investments and maintain their functionality in the long term.





**Compact, powerful and mobile**

Cold water high-pressure cleaners in the compact class are an ingenious solution for anyone who works on the go: the machines can be used upright or lying flat and carried with the carrying handle for easy transport (also by crane).



With Kärcher high-pressure cleaners, the choice is yours in every respect: with performance ranging from powerful to ultra, mobility from compact to trailer. And energy from electric, diesel or petrol engines. Ideal for stand-alone cleaning for long periods.

# ON YOUR MARKS, VACUUM, DONE!



Wet and dry vacuum cleaners in the construction sector have a lot to contend with: dust, swarf, liquids. And often in large quantities. Whatever you want to vacuum, your Kärcher wet and dry vacuum cleaner is up to the task.

And there is no need to compromise. Choose exactly the right Kärcher wet and dry vacuum cleaner for you: from compact and manoeuvrable to 100-litre capacity and explosion-proof. All types offer maximum mobility, extreme suction power and the drain hose as standard for easy emptying. With the power of up to three suction turbines and 235 mbar, dirt does not stand a chance. They simply vacuum wet or dry, without filter changes. Patented automatic filter cleaning system Tact ensures consistently high suction power and long work intervals.

Whether sanding, milling or drilling – your Kärcher wet and dry vacuum cleaner vacuums the dust directly from the tool, which is directly connected to the built-in power outlet and switched on and off with the built-in automatic start/stop function. The standard antistatic system ensures the highest level of safety. The compact, cubic construction style facilitates handling and transport, as do the carrying handle, fold-down push handle, toolbox attachment and accessory storage for storing the complete range of accessories directly on the machine, meaning that they are always close to hand.



**All-round specialists**

Dust-free, safe and thorough: simply vacuums up everything as it comes. With your Kärcher wet and dry vacuum cleaner, you can remove any type of loose dirt effortlessly.



Every experienced operator knows that suction power alone says nothing about the actual performance. Key factors are the overall design, including all filters and control elements, ergonomics, stability and accessories

that are perfectly tailored to the machine. For decades, Kärcher has been setting standards continually with innovative technologies – while offering outstanding value for money.

# MOVE MOUNTAINS.



There is so much to do – so do it quickly. When it comes to removing large quantities of dirt, our powerful sweepers and vacuum sweepers offer the ideal solution.

Kärcher vacuum sweepers clean all surfaces quickly and thoroughly both indoors and outdoors, on construction sites and company grounds, as well as in warehouses, and can vacuum even large pieces of waste. In all performance classes, from compact walk-behind machines to high-volume ride-on machines, easy operation and low-maintenance technology feature as standard. When choosing a machine, the most important factors to consider are surface area, volume and cleaning frequency. We are always on hand to help you with your decision, whether with expert advice or honest data.

### **Time is money. And quality saves time.**

All Kärcher sweepers and vacuum sweepers are ready to use at the push of a button and achieve outstanding results every time thanks to their manoeuvrability, easy handling and adjustable main sweeper roller. They are also very easy to service, as the filter and roller brushes can be replaced without tools. With the high-speed sweeping principle, the rubbish bin can be filled up to as much as 100% and does not have to be emptied as often. Convenient operation, high power and long work intervals add up to a high area performance, increased efficiency and, overall, a significant cost reduction. And this is all yours.





**Looks powerful and sweeps even better**

Municipal sweepers like the MC 50 with fully hydraulic drive are powerful, robust and easy to operate. The hydraulic high container emptying takes the strain off the operator and saves an enormous amount of time.



**Ideal for advanced users**

Our KM 90/60 R Adv offers high power, easy operation, exemplary ride comfort and a high level of manoeuvrability. Very long work intervals are possible for outdoor use with the petrol version.



Kärcher sweepers and vacuum sweepers are always state of the art. From manual sweepers to industrial machines, they all feature impressive practical details and efficient sweeping and dust control technology. It is this impressive combination of sophisticated

ergonomics, easy operation, simple handling and outstanding efficiency that makes Kärcher sweepers so unique. And that gives you the advantage in your daily work.

# EXTREMELY TOUGH AND GENTLE



For the toughest jobs, you get the best machines from Kärcher. Extremely powerful. Extremely reliable. Extremely safe.

Against the phenomenal power of WOMA® ultra high-pressure machines, resistance is futile. With up to 3,000 bar pressure, even the most stubborn dirt can be removed effortlessly. The machines can even be used to roughen concrete and expose steel reinforcements. And all with just pure water. Using special blasting abrasives, it is even possible to cut steel, for example.

By contrast, our innovative dry ice blasting machines work in a completely different way. With an ice blaster and pellets made from frozen carbon dioxide, you can remove any type of stubborn dirt without damaging surfaces. The dirt is snap-frozen, broken up and removed. Without any corrosion problems or contaminated waste water.

#### **Extremely safe vacuuming**

Kärcher IV/IVC industrial vacuums are available in different performance classes and container capacities for vacuuming large quantities of material in continuous operation. With their innovative motor technology, these industrial vacuums are robust enough for continuous use. In atmospheres where there are dusts that are explosive or harmful to health, you can trust our safety vacuum cleaners: with antistatic equipment, suction hose lock and earthed right through to the suction hose port. They are also certified for dust class H or M and for ATEX zone 22.





**Made for ambitious tasks**

In the construction sector, like in industry, cleaning tasks often arise that go far beyond what is normally required. These tasks not only call for extreme power, but above all workers' safety and protection.



Cleaning and value retention can be achieved through various applications: high-pressure cleaning, vacuuming, ice blasting or parts cleaning. Stationary or mobile. Whatever, whenever, wherever: we offer the right solution. From machines to facades to workpieces,

from construction sites and workshops to the high seas - our robust machines are designed for use under the toughest conditions. Powerful and safe. Reliable and economical.

# THE KÄRCHER SYSTEM



As a systems provider, Kärcher does not want to offer anything and everything, but only what operators need for their individual cleaning system. And this is not decided by the range of elements available, but by the actual needs of the customer. It is important to address questions regarding power, efficiency and sustainability.

A system that consists of machines, accessories, cleaning agents, services and digital solutions that can be easily integrated into operating procedures and that adds real value. A system that makes a difference. The Kärcher System.



## Services



## Connected Cleaning



## Industry solutions



## Machines and accessories



## Cleaning and care agents



## Manual cleaning





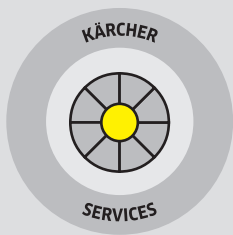
**YOU MANAGE YOUR BUSINESS.  
WE PROVIDE THE SUPPORT  
YOU NEED.**





Things can be much easier when people combine their talents. Pursuing goals together, complementing one another and learning from one another make it so much

easier to achieve success. One could call it the principle of progress. We call it Kärcher Services. A promise of partnership. By professionals for professionals.



### Kärcher Services

The complete range of services from a world market leader. And the perfect continuation of the advanced Kärcher System with innovative tools, a tailored range of services and efficient software solutions.



### Kärcher Rent Rental

Precisely the machine you need. Rent instead of buy. And get more: know-how and the Kärcher Full Service package.



### Kärcher Fleet Fleet management

The intelligent solution for industry and role-specific recording and evaluation of all machine data, plus tools for increased efficiency, documentation and operations planning.



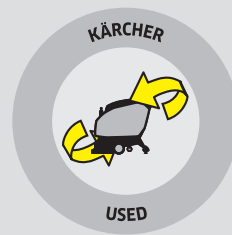
### Kärcher Maintain Service contracts

Every service package is precisely tailored to suit specific needs. The scope of services ranges from inspection as part of mandatory safety testing to servicing at date due or the flat-rate Full Service.



### Kärcher Service Customer service

Service means trust. Anytime. Services you really need. Fast reaction for maximum availability. Maximum value retention and compliance with all statutory requirements.



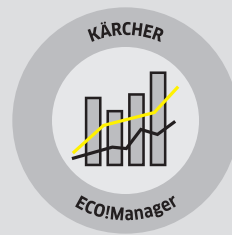
### Kärcher Used Used machines

If used is what you need. New start-up? Or just saving costs? We have the right used machine for you. Used, generally overhauled, good and affordable. Our range is constantly changing. Just ask us.



### Kärcher Lease Leasing

Tailor-made. Flexible. Safe. We provide the flexibility you need: with leasing and financing models to suit every need.

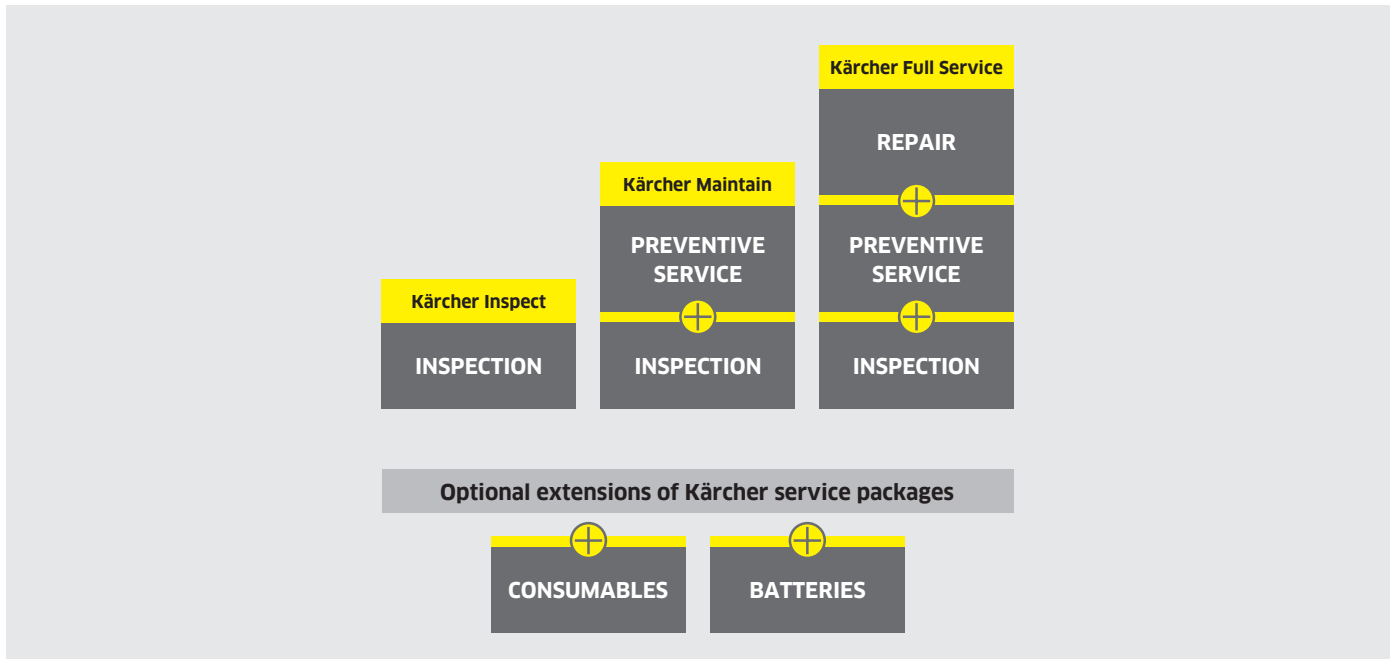


### Kärcher ECO!Manager Facility management

The innovative web application for real-time recording of all facility management activities on-site. Paperless mobile documentation. Recorded data is available directly in the system.

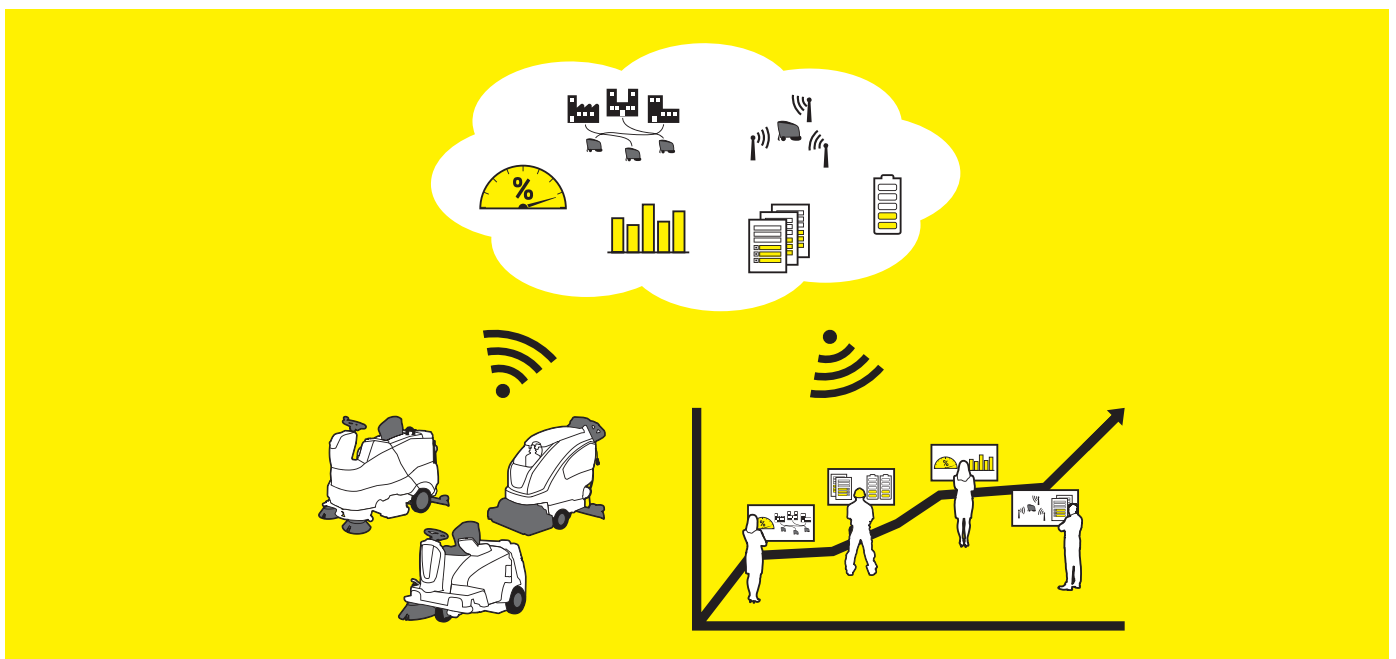
## KÄRCHER MAINTAIN: WE GIVE YOU THE AVAILABILITY.

Every Kärcher service package is precisely tailored to suit your individual needs. The scope of services ranges from inspection to servicing at date due or the flat-rate Full Service. In addition to the service packages, add-on services such as battery maintenance or the delivery of consumables are possible.



## KÄRCHER FLEET: WE GIVE YOU TRANSPARENCY.

The professional, pioneering fleet management solution Kärcher Fleet guarantees a complete overview of your machines, staff and cleaning activities at all times. Kärcher Fleet makes cleaning processes much more transparent and efficient. The result is smooth workflows and considerable cost savings.





# EQUIPMENT AND ACCESSORIES

The wide range of optional accessories in the unique Kärcher System means that you are ideally equipped for every task.



## NT AND IV ACCESSORIES: QUALITY TESTED (DUST CLASSES)



## ACCESSORIES FOR SWEEPERS



# CLEANING AGENTS

Kärcher cleaning agents are specially formulated for use with high-pressure cleaners and take full effect at high pressure. Stable up to temperatures of 150°C and safe to use in hot water high-pressure cleaners.



For other accessories, see our catalogue or visit [www.karcher.com](http://www.karcher.com).

	High-pressure cleaners up to 3,000 bar	Type of dirt	Vacuum cleaners	Sweepers/ Vacuum sweepers
<b>Stubborn dirt</b>				
	HD 9/50-4 HD 9/50 Ge HD 13/35-4 HD 13/35 Ge HDS 10/20-4 M HDS 17/20 De Tr1	<b>Liquids</b> Small quantities Large quantities  <b>Coarse dirt</b> Small quantities Large quantities	NT 48/1 NT 70/2 NT 70/3  NT 35/1 Ap NT 65/2 Ap  NT 35/1 Ap NT 35/1 Tact Te NT 65/2 Tact <sup>2</sup>	KM 90/60 R G
<b>Loose dirt</b>				
	HD 5/11 P Plus HD 5/15 CX Plus HD 6/15 CX Plus HD 9/20-4 M HD 10/23-4 S	<b>Liquids</b> Small quantities Large quantities  <b>Coarse dirt</b> Small quantities Large quantities  <b>Fine dust</b> Small quantities Large quantities Largest quantities	NT 48/1 NT 70/2 NT 70/3  NT 20/1 Ap Te NT 35/1 Ap NT 65/2 Ap  NT 25/1 Ap NT 35/1 Tact Te NT 65/2 Tact <sup>2</sup>	KM 35/5 C KM 70/20 C KM 70/30 C Bp Pack
<b>Large quantities of dirt</b>				
	HD 9/50-4 HD 9/50 Ge HD 25/15-4 Cage Plus HD 1050 De (Cage) HD 1050 B (Cage) HDS 13/20-4 SX HDS 17/60 De Tr1 HDS 1000 Be HDS 1000 De	<b>Liquids</b> Small quantities Large quantities  <b>Coarse dirt</b> Small quantities Large quantities  <b>Fine dust</b> Small quantities Large quantities Largest quantities	NT 48/1 NT 70/2 NT 70/3 NT 20/1 Ap (Sept. 2015) NT 35/1 Ap NT 65/2 Ap  NT 25/1 Ap NT 35/1 Tact Te NT 65/2 Tact <sup>2</sup>	KM 100/100 R Bp Pack KM 120/150 R LPG KM 120/150 R Bp Pack KM 105/110 R G/LPG KM 105/110 R Bp Pack KM 150/500 R D KM 150/500 R Bp Pack
<b>Special dirt: building renovation</b>				
	HD 7/250 De Tr1 HD 9/50-4 HD 9/50 Ge HD 13/35 Ge HD 19/100 De Tr1 HDS 17/60 De Tr1 HDS 9/50 De Tr1 HDS 17/20 De Tr1	<b>Fine dust</b> Small quantities Large quantities Largest quantities	NT 35/1 Tact Te M NT 45/1 Tact Te M NT 55/1 Tact Te M NT 80/1 B1 M	
<b>Special dirt: hazardous substances</b>				
	HD 7/250 De Tr1 HD 13/35-4 HD 19/100 De Tr1 HDS 17/60 De Tr1 HDS 17/20 De Tr1	<b>Fine dust</b> Small quantities Large quantities Largest quantities	NT 35/1 Tact Te H NT 45/1 Tact Te H NT 75/1 Me Ec H Z22	
<b>Special dirt: coating</b>				
	HD 7/250 De Tr1 HD 9/50-4 HD 9/50 Ge HD 19/100 De Tr1 HDS 13/80 De Tr1 HDS 17/60 De Tr1 HDS 9/50 De Tr1			
<b>UHP applications I</b>				
	EcoCold 500/30 Classic EcoMaster D 250Z EcoMaster E 70Y			
<b>UHP applications II</b>				
	EcoMaster MK3 2500/26 EcoMaster MK3 2800/20 EcoMaster MK3 3000/18 EcoRunner			



Scrubbers/Scrubber driers Dry ice blasting machines	Cleaning agents	Example areas of application	Example occupational groups
IB 7/40 Adv IB 15/120	RM 81 ASF RM 31 ASF RM 750 ASF RM 22 ASF	Facade cleaning, floor cleaning, cleaning of machines, vehicles and systems, formwork cleaning, concrete pump cleaning, post-construction cleaning	Painting and varnishing trade; laying works; plastering; glazing; carpentry and metalworking; joinery; roofing; plumbing; timber engineering; scaffolding construction; bricklaying and concrete construction
BRS 40/1000 C BDS 43/180 C Adv BR 40/10 Cl Adv BDP 50/1500 C	RM 752 RM 751 RM 776	Dust-free working; cleaning and roughening surfaces; floor and parquet restoration; wet and dry vacuuming; cleaning machines, vehicles and systems; floor cleaning; post-construction cleaning	Electrical, gas, water, heating, ventilation and air conditioning installation; Painting and varnishing trade; laying works; plastering; glazing; carpentry and metalworking; joinery, roofing; plumbing; timber engineering; scaffolding construction; drywall installation; insulation work; chimney sweeping; bricklaying and concrete construction
	RM 101 ASF RM 110 ASF RM 806 ASF RM 80 Super 1	Demolition works; renovation works; concrete removal; cleaning machines, vehicles and systems; floor cleaning; post-construction cleaning	Electrical, gas, water, heating, ventilation and air conditioning installation; plastering; bricklaying and concrete construction; demolition companies
BRS 40/1000 C BDS 43/180 C Adv BR 40/10 Cl Adv BDP 50/1500 C	Blasting abrasive fine/coarse	Concrete restoration; facade restoration; cleaning and roughening surfaces; floor and parquet restoration	Electrical, gas, water, heating, ventilation and air conditioning installation; Painting and varnishing trade; laying works; plastering; glazing; joinery, roofing; plumbing; drywall installation; insulation work; bricklaying and concrete construction
		Hazardous dusts; demolition works	Electrical, gas, water, heating, ventilation and air conditioning installation; painting and varnishing trade; plastering; glazing; roofing; plumbing; insulation work; demolition companies
IB 7/40 Adv IB 15/120	RM 43 RM 55 ASF	Easily removes stubborn dirt, graffiti, paint, other coatings	Painting and varnishing trade; laying works; plastering; glazing; bricklaying and concrete construction
		Formwork cleaning, cleaning of machines and systems	Bricklaying and concrete construction; scaffolding construction
		Concrete restoration, removing/roughening concrete, tunnel restoration, bridge restoration	Bricklaying and concrete construction; demolition companies; civil engineering and road construction companies

Please contact us for more information:

#### **Head Office Germany**

Alfred Kärcher GmbH & Co. KG  
Alfred-Kärcher-Straße 28-40  
71364 Winnenden

Phone +49 7195-14-0  
Fax +49 7195-14-2212

[www.kaercher.com](http://www.kaercher.com)

#### **North America**

Kärcher North America  
4555 Airport Way  
Denver, CO 80239  
U.S.A.

Phone +1 303-738-5805  
Fax +1 303-865-2758

[www.karcherna.com](http://www.karcherna.com)

#### **United Kingdom**

Kärcher (UK) Ltd.  
Kärcher House  
Beaumont Road  
Banbury  
Oxon OX16 1TB

Phone +44 1295-752-000  
Fax +44 1295-267-511

[www.karcher.co.uk](http://www.karcher.co.uk)

#### **Ireland**

Kärcher Ltd.  
Unit 4  
E.P. Mooney Business Park  
Walkinstown Avenue  
Dublin 12

Phone +353 1-409-7777  
Fax +353 1-409-7775

[www.karcher.ie](http://www.karcher.ie)

#### **Southeast Asia**

Regional Head Office  
Southeast Asia

Kärcher South East Asia Pte. Ltd.  
3 Depot Close #01-01  
Singapore 109840

Phone +65 6897 18 11  
Fax +65 6897 16 11

[www.karcher.com.sg](http://www.karcher.com.sg)

#### **Hong Kong**

Kärcher Limited  
Unit 05, 13/F, Nanyang Plaza  
57 Hung To Road  
Kwun Tong, Kowloon

Phone +852 2-357-5863  
Fax +852 2-357-5632

[www.karcher.com.hk](http://www.karcher.com.hk)

#### **Australia**

Kärcher Pty. Ltd.  
40 Koornang Road  
Scoresby VIC 3179  
Melbourne, Victoria

Phone +61 3-9765-2300  
Fax +61 3-9765-2398

[www.karcher.com.au](http://www.karcher.com.au)

#### **New Zealand**

Kärcher Ltd.  
66 Allens Road  
East Tamaki  
Auckland 2013

Phone +64 9-274-4603  
Fax +64 9-274-6932

[www.karcher.co.nz](http://www.karcher.co.nz)

#### **South Africa**

Kärcher (Pty) Ltd.  
Cnr. Mount Joy & George Allen Rd.  
Wilbart Ext. 2  
P.O. Box 11818  
Vorna Valley, 1686

Phone +27 11 657 7300  
Fax +27 11 657 7440

[www.karcher.co.za](http://www.karcher.co.za)

#### **Dubai**

Kärcher FZE  
Quality Cleaning Systems  
Jebel Ali Free Zone  
Plot No. S-10104 South Zone  
RA 08, XB 1, Jebel Ali

Phone +971 4-886-1177  
Fax +971 4-886-1575

[www.kaercher.com](http://www.kaercher.com)