

KÄRCHER

makes a difference



THE ULTIMATE IN CLEANING DIVERSITY.

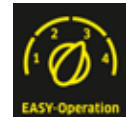
Configurable walk-behind scrubber.

B 60 W BP



Diverse. Efficient. Quiet. Fully configurable scrubber.

Efficient cleaning has a new name: B 60 W BP. Not only is this machine economical, it also achieves impressively high area performances. Equipment, working width and squeegee shape can be selected according to requirements of the cleaning application. The KIK system guarantees simple and safe operation. Operator settings can be precisely defined in advance.



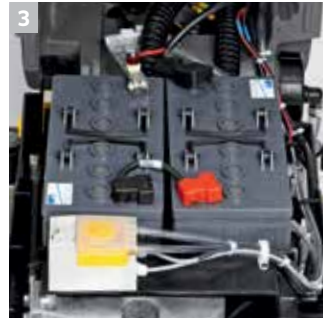
1 Safety is a key function

■ The KIK (Kärcher Intelligent Key) system offers much greater protection against operator errors. Supervisors can preset the B 60 operation settings for specific cleaning jobs and areas, the operator only needs to insert the key. The machine can only be started with the associated coded key, so it is protected against unauthorized use.



2 Slim and fit

■ With its slimline design, the B 60 easily negotiates awkward objects and narrow passageways. The asymmetric tank shape ensures a clear view of the brush head.



3 Correctly charged

■ The charging curve of the standard built-in charger protecting the batteries and ensuring long run times and long battery life.



4 Quiet, strong and efficient

■ In eco:efficiency mode, the brush speed and suction force is reduced to a level adequate for relatively light soiling. In this mode the noise level is also reduced up to 4 dB(A), making the B 60 the right choice for cleaning in noise-sensitive areas.

Savings of up to 20% on energy and 10% on water can be achieved in eco:efficiency mode.

The ultimate in cleaning diversity.

The Kärcher B 60 walk-behind scrubber is ideal for cleaning areas from 10,764 to 26,910 ft². Interchangeable cleaning heads are available in working widths from 22" in to 26" with adjustable contact pressure. The Kärcher B 60 W can be configured entirely according to your particular cleaning needs.



Shown with D 65 head

1 Large tank for extended operating time and range

■ The 16-gallon tank-in-tank is designed with smooth surfaces, allowing easy cleaning and complete drainage of dirty water from the tank.

2 Brush head raising

■ The brush head can be easily raised by pressing down on the conveniently placed pedal. The pedal is textured to ensure secure operation even with wet shoes. The extended edge provides additional security.

3 Smart cleaning heads: rollers, discs or orbital

■ Five interchangeable cleaning heads are available for the B 60. Rollers brush, disc brush and orbital pad head options allow you to meet any cleaning requirement. All cleaning heads can be changed quickly without tools and are available in working widths from 22" in to 26".

4 Battery operation with on-board charger

■ The B 60 is battery-operated and is available with various battery types.

5 Squeegee raising

■ The squeegee can be lifted manually using a lever to lock into place - allowing for more control.

6 Applying the right pressure

■ The contact pressure of the brush head can easily be adjusted manually to suit individual requirements. This optimizes the cleaning process and energy consumption.

Impressive technology.

The Kärcher B 60 walk-behind scrubber has a host of technical refinements and innovations whose main purpose is to make the work simple and convenient, with the best possible results and the greatest possible efficiency.



1 Easy fresh water filling

- The large fresh water filling inlet is located on the front of the machine, the extra large integrated funnel makes it easy to fill the machine from a bucket. The fresh water inlet cap is held by a retainer so it won't get lost.

2 Easy twist and click

- The squeegee setting has a major effect on drying results. To simplify the task of finding the best squeegee position, Kärcher has developed a simple adjuster that allows the squeegee angle to be set in one easy motion.

3 Easy scrubbing and sweeping in a single operation

- Both roller heads (R 55 to R 65) include a sweeping function, which eliminates the need for time-consuming pre-sweeping.

4 Easy adjustment

- The support wheels can be adjusted with a hand-screw and can also be placed ahead of the squeegee blade. This prevents wheel streaking on sensitive floors. Oil-resistant squeegee blades made of transparent polyurethane are standard on squeegees with support wheels. The rear squeegee blade can also be flipped to increase longevity.

5 Easy Operation

- The easy operating squeegee lever is positioned in the middle for convenient use by both right-handers and left-handers and locks in the up position.

6 Easy machine cleaning (optional)

- The Kärcher B 60 is the first and only walk-behind scrubbers with integrated tank rinsing. After the cleaning job is finished, the dirty water tank can be cleaned using an integrated nozzle system. Simply connect a water hose to the quick coupling and open the drain hose of the dirty water tank.

TECHNICAL DATA AND EQUIPMENT

B 60 W Bp

+ brush head		R 55	D 55	R 65	D 65	S 65
Brush working width	inches	22	22	26	26	26
Working width, suction	inches	33	33	37	37	37
Theoretical area performance	ft ² / h	23680	23680	27986	27986	23681
Fresh/dirty water tank capacity	gallons	16 / 16	16 / 16	16 / 16	16 / 16	16 / 16
Max. water flow	gallons	1	1	1	1	1
Max. speed	rpm	600-1300	180	600-1300	180	2000
Power consumption, entire device	W	2100	2100	2100	2100	900
Power consumption, traction motor	W	300	300	300	300	300
Operating Noise Level	dB(A)	61-66	61-66	61-66	61-66	61-66
Dimensions (L x W x H)	inches	59 x 26 x 45	58 x 26 x 45	60 x 29 x 45	60 x 29 x 45	57 x 28 x 45
Weight (with battery)	lbs	400	360	425	400	430

Equipment

Product	Order No.	Description
B 60 W Bp	9.841-386.0	16 gallon, 245 Ah Low Maintenance Batteries, D 65 Brush Head
B 60 W Bp	9.841-387.0	16 gallon, 230 Ah AGM Batteries, D 65 Brush Head
B 60 W Bp	9.841-171.0	Walk-behind scrubber, includes 245 Ah batteries and charger, cleaning head sold separately
B 60 W Bp	9.841-172.0	Walk-behind scrubber, includes 230 Ah AGM batteries and charger, cleaning head sold separately
B 60 W Bp	9.841-173.0	Walk-behind scrubber, includes 230 Ah AGM batteries and charger, cleaning head sold separately
B 60 W Bp	9.841-174.0	Walk-behind scrubber, includes 245 Ah batteries and charger, cleaning head sold separately
B 60 W Bp	9.841-175.0	Walk-behind scrubber, includes 230 Ah AGM batteries and charger, cleaning head sold separately
B 60 W Bp	9.841-181.0	Walk-behind scrubber, includes 230 Ah AGM batteries and charger, cleaning head sold separately

Accessories

	Order No.	Description
■	4.777-412.0	Suction bar, curved with rollers and polyurethane oil-resistant blades (37" / 940 mm)
■	5.035-488.0	Adapter homebase accessories
■	6.980-077.0	Double hook (requires 5.035-488.0)
■	5.035-344.0	Operator key, yellow
■	5.035-348.0	Foreman key, gray
□	4.035-386.0	Lid with tank rinsing system
□	4.035-345.0	Quick fill tank system (requires 9.083-003.0)
□	9.083-003.0	Hose coupling
□	6.273-214.0	Squeegee blade set, blue EPDM
□	6.273-208.0	Squeegee blade set, oil resistant (standard w/ 4.777-412.0)
□	6.273-205.0	Squeegee blade set, anti stripe oil resistant
□	6.273-291.0	Squeegee blade set, for textured floors
□	4.035-472.0	New connection element for roller brush heads, B 60 W
□	4.035-473.0	New connection element for disc brush heads, B 60 W
□	2.640-430.0	Spray suction set - simplifies the cleaning of difficult to reach areas like corners, edges and between objects
□	2.640-920.0	Noise reduction set, reduces noise level by 3dB(a)
□	4.444-015.0	Suction hose accessories, for taking in water from corners (e.g., Deep freezers)
□	4.744-162.0	Gym set, din 18032, reduces the pressure to the floor

■ Included □ Optional

Please contact us for more information:

North America

4555 Airport Way
Denver, CO 80239
U.S.A.

Phone 800-456-6649
Fax 303-738-2818

www.karcher.com/us

Canada

6535 Millcreek Drive
Unit 67
Mississauga, ON L5N 2M2
Canada

Phone 905-672-8233
Fax 905-672-3155

www.karcher.ca