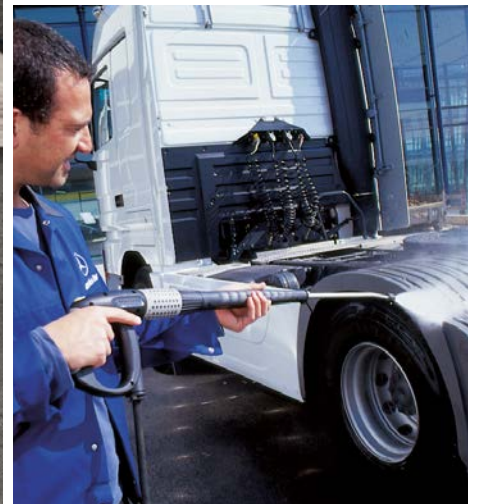
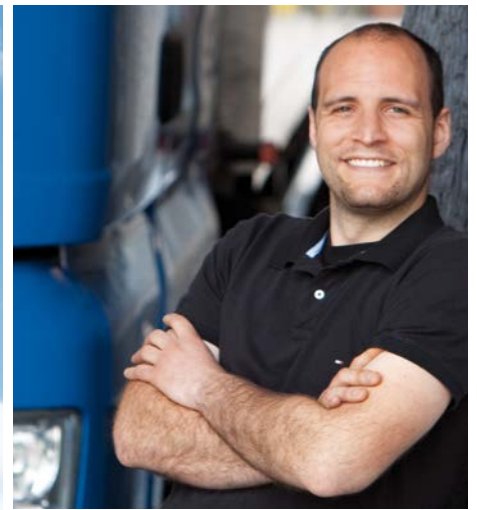


High performance pays off:  
Kärcher commercial vehicle washes.





## Effective care for the largest vehicles.

Performance counts with commercial vehicles. This also applies to professional vehicle cleaning. Kärcher offers perfectly balanced system solutions for commercial vehicle washes – where efficiency and economy are always in the foreground. Our range of products and services encompasses everything – from gantry commercial vehicle wash systems, mobile single-brush wash systems to compatible cleaning agents and environmentally friendly water treatment systems. Benefit from the many years of experience and know-how of our experts.





# Completely satisfied: with Kärcher system solutions.

Whether a haulage contractor, municipality or wash centre – by choosing Kärcher, you are making the right choice. Kärcher has been offering reliable and efficient system solutions to suit all needs for over 75 years.



## 1 Versatility for haulage contractors

Many haulage contractors have vehicle fleets usually consisting of different types of commercial vehicles, which each place different demands on vehicle cleaning. Kärcher offers a tailored solution for every vehicle type.

## 2 A time-saving concept for bus companies

Time and a clean appearance are important for bus companies. The high-performance Kärcher wash systems clean buses quickly and effectively with brilliant results every time.

## 3 For cost efficiency in municipalities

For municipalities, what matters most in commercial vehicle cleaning is cost efficiency. A perfectly balanced Kärcher cleaning system is not only affordable, it is also cost-efficient and profitable in the long term.

## 4 Versatility in wash centres

Wash centres must be highly versatile to cope with various cleaning activities – including coping with a diverse range of vehicles. Only a perfectly balanced system can ensure a smooth process and meet all requirements.



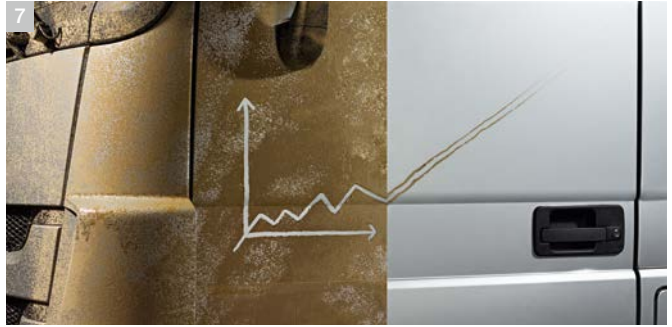


#### 5 For every bay and vehicle type

The Kärcher TB is variable in height and width and therefore suitable for every washing bay. With the contouring of the side brushes, even new, aerodynamic vehicles can be cleaned with ease.

#### 6 For individual requirements

Kärcher wash systems save both time and money. Depending on the degree of soiling, the Kärcher TB can be individually programmed and the wash cycle time reduced.



#### 7 For long-term efficiency

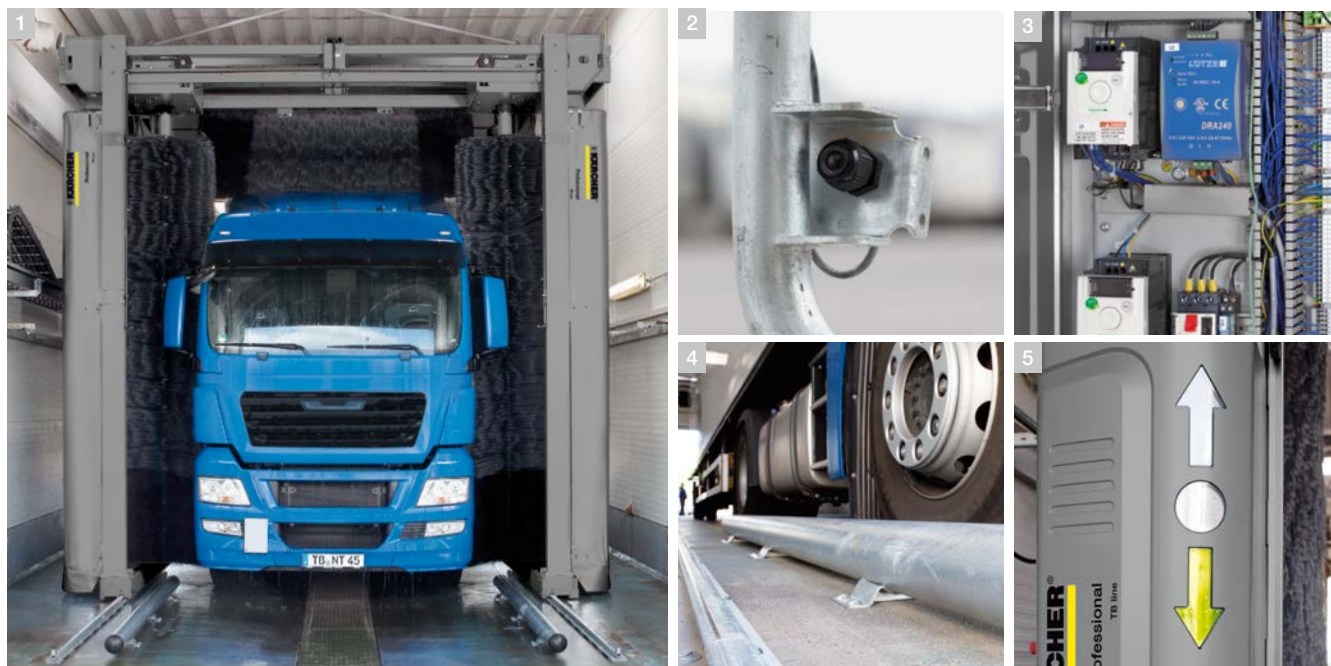
All Kärcher system solutions are developed for low-maintenance and economical cleaning. This quality guarantees many years of reliable service and profitability.

#### 8 For special tasks

As a reliable partner, Kärcher offers efficient tank cleaning system solutions. Choose a solution that offers the highest efficiency for your vehicle wash.

# Economical and reliable: the Kärcher TB.

With the Kärcher TB, you can master great challenges with ease. The innovative and high-performance commercial vehicle wash system is designed for regular cleaning of vehicles of haulage contractors, contract cleaners, car dealerships or municipalities. Low-maintenance technology, ease of use and a modular system ensure reliability and versatility.



## 1 The advantages of the Kärcher TB

- Low maintenance: tried and tested belt or direct drives make lubrication of the system unnecessary.
- User-friendly: large and clearly arranged control panel with intuitive user guidance – so rugged it can be operated with work gloves.
- Versatile: universal CAN bus control for easy installation and individual expansion options.

## 2 Reliable washing process

Light barrier for vehicle contour detection.

## 3 Gentle vehicle wash

Frequency converter for protecting the system and for gentle cleaning.

## 4 High level of safety

Guard posts for safe vehicle positioning.

## 5 Simple driver instruction

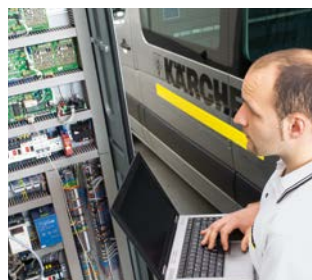
Optional positioning light on the gantry or separately in front of the gantry.



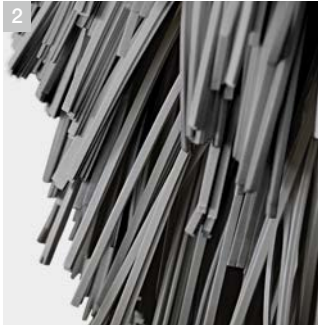
Belt or direct drive



Control panel



CAN bus control



#### 1 Adjustable in height and width

This adaptable system is suitable for use in virtually any washing bay.

#### 2 Gentle brushes

Optimal for buses: the tried-and-tested Carlite® brush cleans effectively and is gentle on paintwork.

#### 3 Perfect cleaning results

This effective chemical pre-spray system cleans with a high-pressure pump at up to 60 bar pressure.

#### 4 Stability in the washing process

The control software monitors the performance of the brushes for a constantly uniform contact pressure.

#### 5 Easy accessibility

The dosing pumps and cleaning agent containers are stored in the media cabinet at the front of the system for easy access.

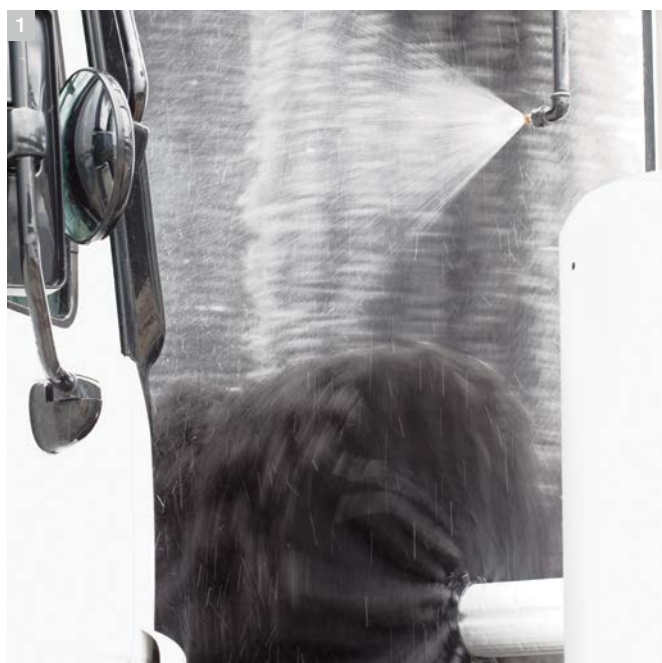
#### 6 Suitable for any vehicle

The innovative side brush follows the contour of the vehicle for perfect cleaning results.



# A Kärcher achievement: innovation.

Kärcher offers highly innovative commercial vehicle washing stations. This is why the TB is continuously adapted and optimised to meet changing national and international market and customer requirements.



**1 TB 60 Hz**

In addition to the 50 Hz TB, it is also available in 60 Hz. Both versions impress with features such as a simplified and intuitive control unit, easy height and width adjustment and excellent washing parameter adjustment options.



**2 60 bar TB**

The 60 bar TB features a 180° rotatable roof beam for front, rear and roof washes, a chemical prespray system and up to 3 sets of spinners on each side of the system. This allows even stubborn dirt to be removed in next to no time.



**Control unit**

Equipped with a wide range of special functions and suitable for remote monitoring systems.



**High pressure spinners**

60 bar pressure and 6000 l/h per set of spinners for effective pre-cleaning of sides of vehicles.



**High-pressure roof beam**

Height adjustable and 180° rotatable for front, rear and roof washes.



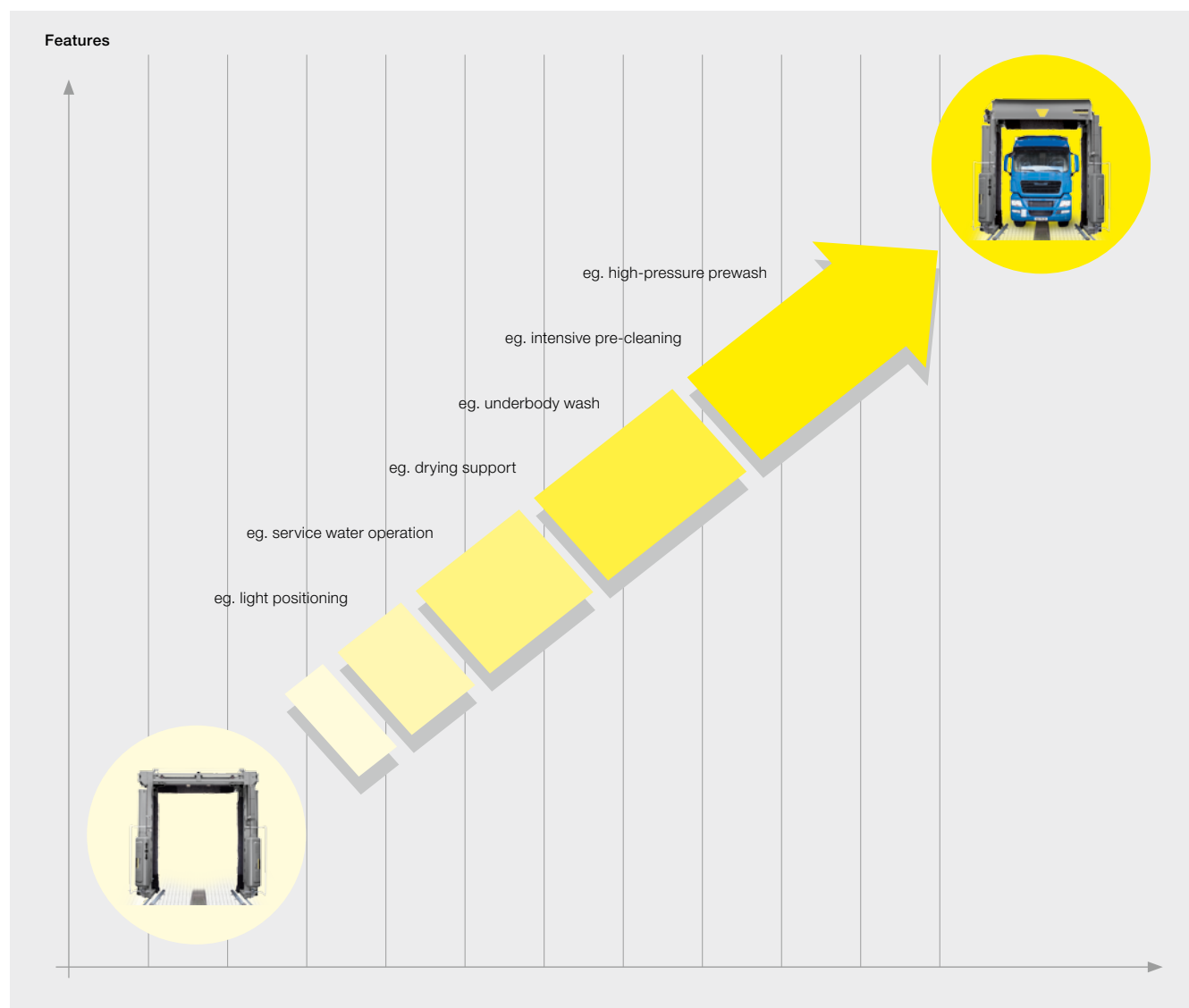
**Radio remote control**

Manual control for difficult vehicle contours and perfect results. Compatible with all existing control panels.



# Masters every challenge: the versatility of the Kärcher TB.

Every vehicle fleet places different demands on vehicle cleaning. The Kärcher TB is a sophisticated system solution which can be upgraded flexibly according to individual requirements. There is no challenge too great for the Kärcher TB.



The Kärcher TB: Versatility and cost control right from the very start.



## Everything is taken into account.

There is much to consider in efficient cleaning. In addition to different vehicles, different outside mirror variants also have to be considered when cleaning. The Kärcher TB also offers maximum versatility here.

# Highly economical for small vehicle fleets: the RBS 6000.

With the RBS 6000, Kärcher offers the ideal solution for smaller vehicle fleets. The mobile single-brush wash system was specially developed for cleaning the front, rear and sides of buses and box-type vans. A rotating brush moving around the vehicle removes the dirt quickly, effortlessly and economically.



## 1 Intelligent design

Thanks to its aluminium construction, the RBS 6000 is weatherproof and easy to control. In addition, the semi-sided shell panelling reliably protects the user from splashing.

## 2 For all vehicle types

Sloping vehicle noses up to an angle of 10° can be washed with the RBS 6000 thanks to vertical contour detection and brush tilting mechanism with adjusting wheel.

## 3 Simple operation

With practical operating and safety handle, the RBS 6000 can be controlled effortlessly as the rotating brush assists forward movement. The brush stops rotating when the handle is released.

## 4 Optimal washing results

A dosing pump ensures that only the amount of Kärcher cleaning agent actually needed is added.

## 5 Full mobility

Two track wheels and four steering rollers provide stability and ensure easy manoeuvring of the system.



# Technical data.



## Single-lance operation for manual washes

	HDS-C 8/15 E	HDS-C 9/15	HD 9/18 ST-H	HD 13/12 ST-H	HDS 12/14-4 ST
Flow rate	740 l/h	900 l/h	900 l/h	1300 l/h	1200 l/h
Pressure	150 bar	150 bar	180 bar	120 bar	140 bar



## Multiple lance operation for manual prewash

	HDC 20/8	HDC 20/8 H	HDC 20/16	HDC 20/16 H
Flow rate	700–2000 l/h	700–2000 l/h	700–2000 l/h	700–2000 l/h
Pressure	60–80 bar	60–80 bar	60–160 bar	60–160 bar
Maximum feed temperature	60°C	85°C	60°C	85°C



## RBS

	RBS 6012			RBS 6014		
Washing height	3645 mm	3645 mm	3645 mm	4205 mm	4205 mm	4205 mm
System height	3810 mm	3810 mm	3810 mm	4370 mm	4370 mm	4370 mm
Fresh water supply	Min. 80 l/min	Min. 80 l/min	Min. 80 l/min	Min. 80 l/min	Min. 80 l/min	Min. 80 l/min
Pressure for water connection	3–6 bar	3–6 bar	3–6 bar	3–6 bar	3–6 bar	3–6 bar
Connected load	1.15 kW	1.15 kW	1.15 kW	1.15 kW	1.15 kW	1.15 kW
Supply voltage	3~/400 V/50 Hz	3~/230 V/50 Hz	1~/240 V/50 Hz	3~/400 V/50 Hz	3~/230 V/50 Hz	1~/240 V/50 Hz

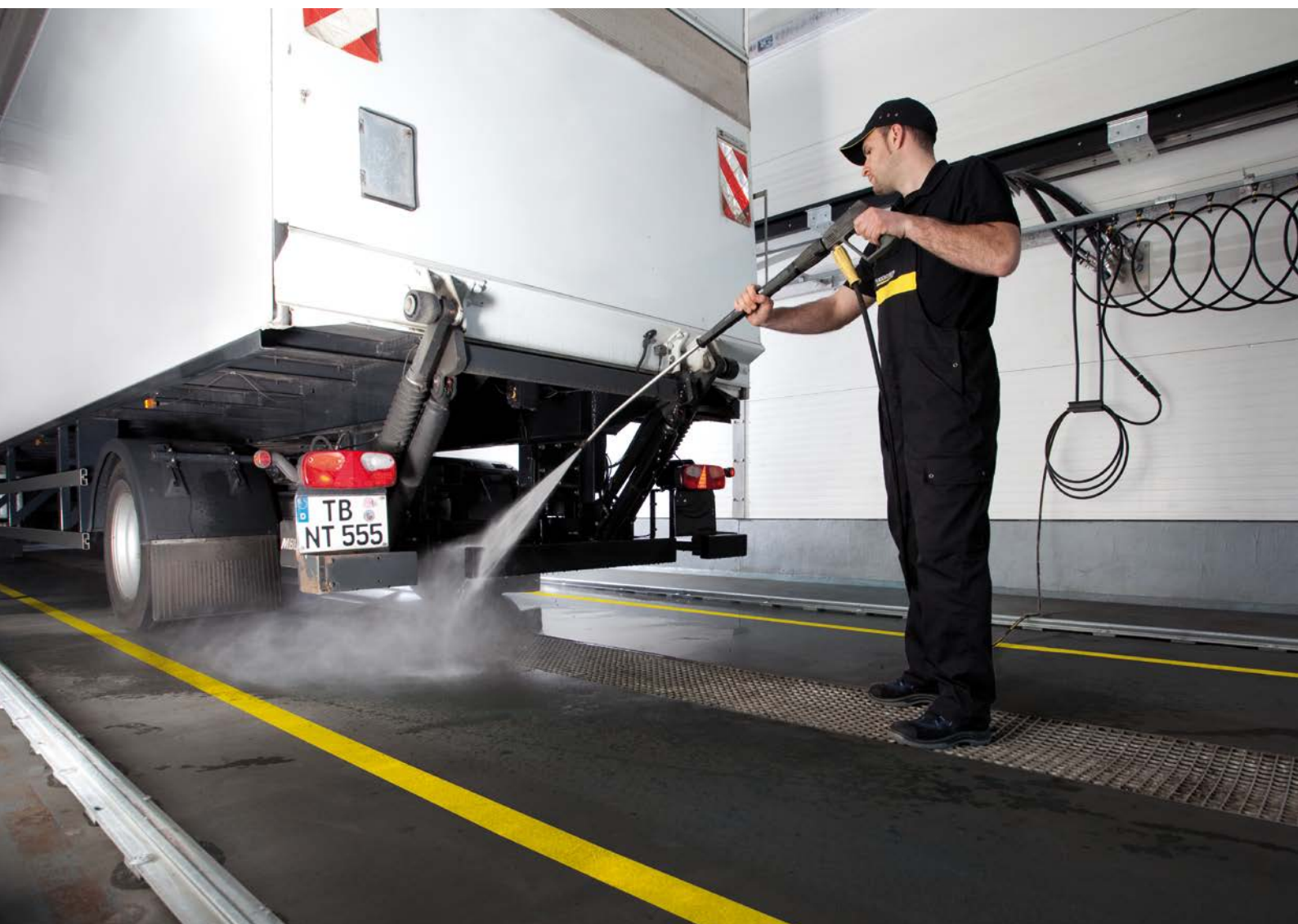


## TB

	TB 36	TB 42	TB 46	TB 50
Washing height	3600 mm	4250 mm	4600 mm	5050 mm
System height without splash guard	4539 mm	5189 mm	5539 mm	5989 mm
System height with splash guard	4597 mm	5247 mm	5597 mm	6047 mm
System width without splash guard	4830 mm	4830 mm	4830 mm	4830 mm
System width with splash guard	5000 mm	5000 mm	5000 mm	5000 mm
Fresh water supply	100 l/min/4–6 bar	100 l/min/4–6 bar	100 l/min/4–6 bar	100 l/min/4–6 bar
Connected load	5.3 kW	5.3 kW	5.3 kW	5.3 kW
Power supply	3~/400V/50Hz 3~/220V/60 Hz	3~/400V/50Hz 3~/220V/60 Hz	3~/400V/50Hz 3~/220V/60 Hz	3~/400V/50Hz 3~/220V/60 Hz
Compressed air	500 l/min/6–8 bar	500 l/min/6–8 bar	500 l/min/6–8 bar	500 l/min/6–8 bar

## Thorough and effective: manual wash.

The manual wash is an essential part of thorough vehicle cleaning. Kärcher hot and cold water high-pressure units with different nozzle attachments and compatible cleaning agents enable the cleaning of hard-to-reach areas. Dirt is removed quickly, easily and cost efficiently.



HDS-C 9/15, HDS 12/14-4 ST



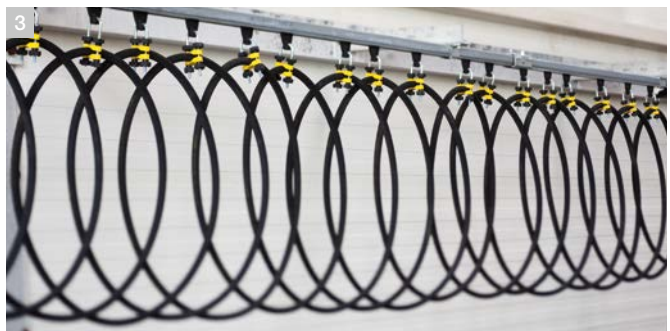
HDC 20/16





#### 1 Easy, quick and thorough

High-performance Kärcher high-pressure cleaners clean quickly and reliably. A versatile range of accessories, e.g. flexible spray lance, enable the cleaning of hard-to-reach areas.



#### 2 One system for multiple users

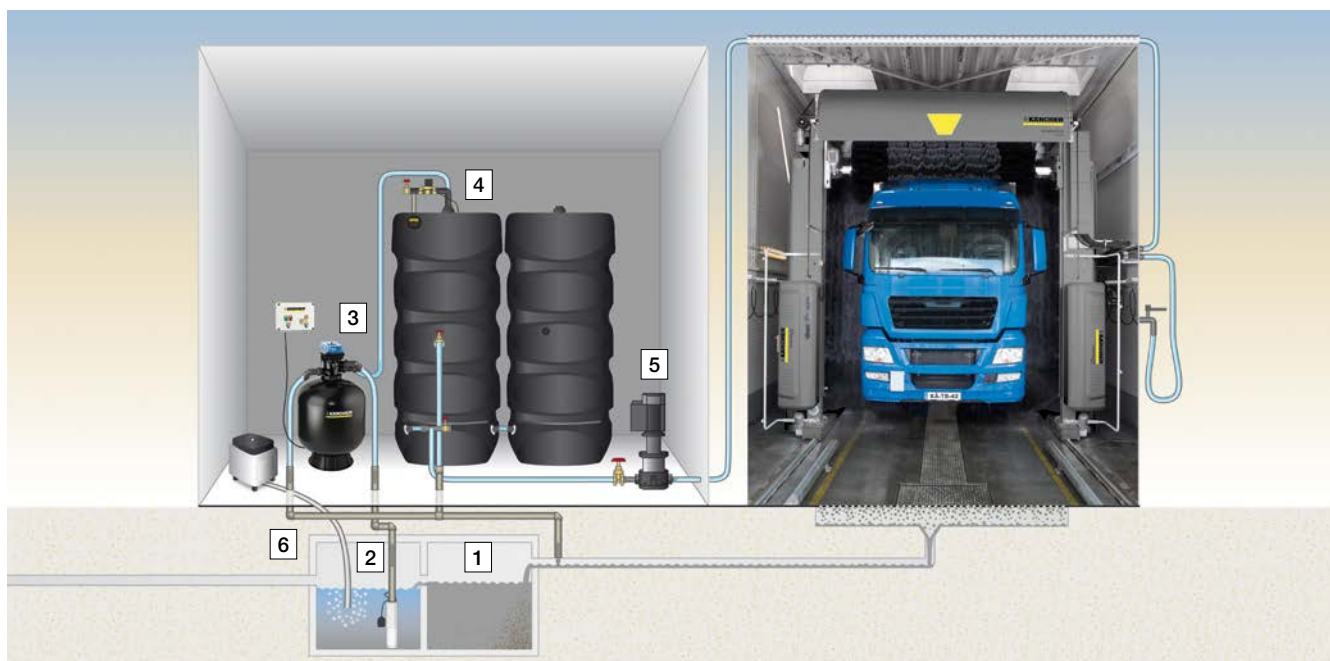
Thanks to a central supply unit, multiple vehicles can be pre-washed simultaneously. Water is pumped to the supply points in the washing bay via a permanently installed pipe system.

#### 3 Everything clean, everything safe

Hose guiding devices on the side ensure safety and a controlled washing process. They prevent tripping and increase the hose service life.

# Environmental care: Kärcher water recycling systems.

With Kärcher you can work in an environmentally-friendly and cost-effective way, because environmental protection and careful handling of natural resources are important values for Kärcher. Thanks to a comparatively low water consumption and water recycling systems that feed all the waste water back to the washing process, the fresh water consumption can be reduced by up to 85%.



## The recycling cycle

The waste water flows through the sediment basin 1 to the pump storage basin 2. From there it is pumped through a sand filter with automatic backflush capability 3 into the recycled water tank. 4 A supply pump 5 draws water from this tank for the washing process. Excess water can be discharged

directly to the sewer via the overflow of the pumped-storage reservoir 6 or via a separator depending on the legal regulations. The waste water can also be discharged to the sewer directly from the recycled water tank 4. In this case there is no connection between the pump storage basin and the sewer.



WRP 8000, WRP 16000

## Technical data

	WRP 8000	WRP 16000
Flow rate	8000 l/h	16000 l/h
Connected load	1.30 kW	1.70 kW
Power supply	1~/230 V/50 Hz	1~/230 V/50 Hz
Buffer tank capacity	1000 – 3000 l	1000 – 3000 l



# Kärcher cleaning agents – tough on dirt, easy on the environment.

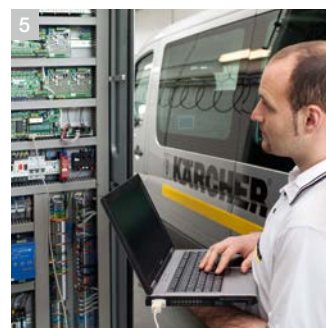
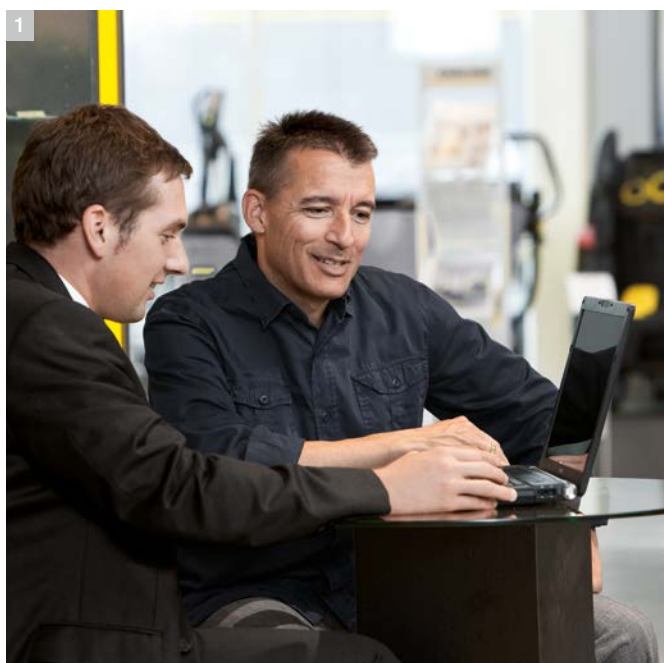
Product description		Use	Product information
<b>Prespraying and wheel cleaning</b>			
	<b>RM 806 ASF HP wash</b> This concentrate has a broad dirt-dissolving range and removes the most stubborn road dirt, such as dust, oil, lubricating grease, insects, tree resin and mud.	<b>Primarily used in hot water, high pressure cleaners and in coin operated washes</b> Primary mixture: 1 + 3 Dosage: 0.2 – 0.5 %	Alkaline pH: 13.3 in concentrate
	<b>RM 804 ASF intensive cleaner, acid</b> The acid prespraying agent with corrosion protection is effective in removing mineral dirt such as plaster, lime, mortar and concrete from construction site vehicles. May also be used as a cleaner for stainless steel.	<b>For use in commercial vehicle washes, high pressure cleaners and prespray units.</b> Dosage: 1 – 3 %	Acidic pH: 1 in concentrate
	<b>RM 805 Truck and tarpaulin cleaner, alkaline</b> This pre-spraying agent for use in brush and high-pressure washes effectively helps to remove the most stubborn grime, such as lubricants, soot, oil, tar, insect remains and grey film from all types of commercial vehicles.	<b>For use in commercial vehicle washes, high pressure cleaners and prespray units.</b> Dosage: 1 – 3 %	Alkaline pH: 12.8 in concentrate
	<b>RM 800 ASF intensive wheel cleaner</b> Highly effective wheel cleaner concentrate. Active foam facilitates the gentle removal of all common types of wheel grime, such as brake dust, rubber dust, road salt deposits, limescale and salt residues.	<b>Mainly used in brush washing systems and self-service washing systems as a manual prespraying agent.</b> Primary mixture: 1 + 9	Acidic pH: 0.3 in concentrate Usage: 2.5 ml per rim
	<b>RM 801 alkaline wheel cleaner</b> Special wheel cleaner for all coated light-metal and steel rims (not suitable for uncoated high-gloss special rims). Gentle action effectively removes the most stubborn dirt, such as road dust, baked-on brake dust, tyre dust and deposits of winter salt. Does not attack concrete floors or wheel troughs.	<b>Mainly used in brush washing systems and self-service washing systems as a manual prespraying agent.</b> Primary mixture: 1 + 9 to 1 + 4	Alkaline pH: 13.5 in concentrate Usage: 5.0 ml per rim
<b>High-pressure and foam wash</b>			
	<b>RM 811 ASF car shampoo</b> Highly active, wax-compatible shampoo for brush washing in automatic wash systems. Specially formulated to reduce sliding friction of brushes and thus protect the surface of the vehicle. <sup>2)</sup>	<b>Is principally used in automatic brush washes.</b> Dosage: 0.2 %	Slightly alkaline pH: 8.7 in concentrate
	<b>RM 838 foam cleaner</b> Brilliant results with brushless vehicle washing. Intensive foam cleaner with high dirt carrying capacity. Removes the most stubborn dirt, including insect residues, tar, soot, oil and grease; Fresh fruity aroma, no sodium triphosphate.	<b>Mainly used in automated brush washes.</b> Dosage: 0.2 %	Slightly alkaline pH: 8.7 in concentrate
<b>Waxes and drying aids</b>			
	<b>RM 821 spray wax</b> This liquid spray wax gives vehicles a shine and long-term protection. Not affected by the water quality, provides spotless finish without blow drying. <sup>1)</sup>	<b>Used in coin-op car washes and in commercial vehicle washes with hot water high-pressure cleaners.</b> Primary mixture: 1 + 9 Dosage: 1 – 2 %	Slightly acidic pH: 4 in concentrate
	<b>RM 833 liquid leather</b> Special drying aid for washes without blow drying. Lets water run off over large surfaces and dries without spots and streaks. Also suitable for high-pressure cleaners. <sup>2)</sup>	<b>Mainly used in brush wash systems and self-service wash systems without blow drying and in high-pressure cleaners.</b> Primary mixture: 1 + 3 Dosage: 0.1 – 0.2 %	Alkaline pH: 12 in concentrate
<b>Other products</b>			
	<b>RM 841 ASF washing bay and tile cleaner</b> This acidic washing bay and tile cleaner concentrate quickly and efficiently removes scale, lime, grease, soap residue and traces of rust.	<b>For manual basic and maintenance cleaning of washing bays.</b> Dosage: Base cleaning: 20 – 50 % Routine cleaning: 5 – 10 %	Acidic pH: 1 in concentrate

<sup>1)</sup> Conforms to VDA Class A    <sup>2)</sup> Conforms to VDA Class B

## Always in the foreground: efficiency.

System solutions from Kärcher impress not just with innovative and compatible machines, but also with exceptional quality, progressive technology and customer-oriented service. This pays off – with long operating times, reliable operation and reduced service and maintenance costs. Costs are minimised by affordable extended warranties, machine breakdown insurances and complete service contracts for regular inspections.





#### 1 Competent advice

The type of vehicle, vehicle performance and type of soiling are factors to be considered when choosing the right system. Kärcher product advisers are available to provide the most efficient solution to suit your needs.

#### 2 24-hour service

Every system breakdown means less profit. Kärcher is available for assistance 24-hours a day and provides a fast and reliable spare parts delivery service.

#### 3 On-site training

Kärcher provides effective servicing and maintenance training on site. This ensures efficient operation at minimised cost.

#### 4 Financing and leasing

With Kärcher, financing and leasing solutions, the total costs are converted into manageable monthly rates.

#### 5 Quality tested

Fewer breakdowns, lower repair costs – you can rely on Kärcher.



#### A worthwhile investment

Investment in a wash system involves more than the cost of purchase. In addition to costs for water and electricity, maintenance and servicing add to increase expenditure. With efficient and long-lasting technologies, Kärcher minimises additional costs and thus minimises actual financial expenditure.



# At a glance: the Kärcher complete package.

The requirements for commercial vehicle cleaning are diverse. Just as diverse as Kärcher's range of products and services. With innovative system solutions - from the manual wash to water treatment for wash systems - Kärcher offers everything to meet all needs.



## 1 The Kärcher TB

Innovative, efficient and extremely versatile: Kärcher gantry wash systems are ideal for cleaning any type of commercial vehicle.

## 2 Single-brush wash systems

Fast and efficient for small washes: mobile single-brush wash systems effortlessly remove all kinds of dirt conveniently and economically.

## 3 Manual wash

Perfect for hard to reach areas: With high-pressure cleaners, hard-to-reach areas can be cleaned quickly.

## 4 Tank cleaning

Safe cleaning, even on the inside: the modular system can be adapted to any task, type of dirt and requirement.

## 5 Water treatment

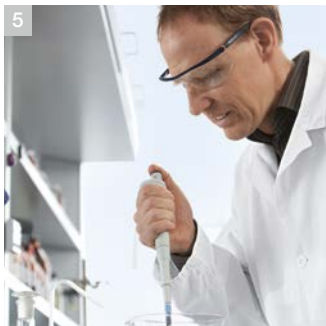
Environmentally friendly and cost-cutting: water recycling systems reduce water consumption by up to 85%.

## 6 Cleaning agents

Round off the service: specially developed Kärcher cleaning agents increase the efficiency of wash systems.

# Enthusiasm. Innovation. Success.

Since its beginnings more than 75 years ago, as a value-oriented family business, Kärcher has become a world brand with three strong attributes: top performance, innovation and quality. Today, the Kärcher brand enjoys the reputation of being a global leader and resource-conserving supplier of professional cleaning systems and is synonymous with reliable products, optimal user value and ongoing commitment to the environment, culture and sport.



## 1 Seattle's highest building: the Space Needle

A Kärcher team pressure-washed the structure up to a height of 184 m. The job took eight weeks, working only at night.

## 2 A facelift for the heads of state

Clean again: In 2005 Kärcher cleaned the National Memorial on Mount Rushmore.

## 3 Innovative right from the start

In 1950, Kärcher developed the first hot water high-pressure cleaner in Europe for professional cleaning.

## 4 Commitment to sports

Clean performance on the pitch. For several years, Kärcher has supported German and international football as a partner.

## 5 In-house research and development

Kärcher develops high-performance cleaning devices, accessories and special cleaning and care products.

## 6 Internationally represented

We are there for our customers all around the world.

## 7 Clean environment

Kärcher works on environmental protection every day, with new products, technologies and investments in production facilities.



**makes a difference**

**Please contact us for more information:**

**Head Office Germany**

Alfred Kärcher GmbH & Co. KG  
Alfred-Kärcher-Straße 28-40  
71364 Winnenden

Phone +49 7195-14-0  
Fax +49 7195-14-2212  
[www.kaercher.com](http://www.kaercher.com)

**North America**

Kärcher North America  
750 W. Hampden Avenue  
Suite 400  
Englewood, CO 80110  
U.S.A.

Phone +1 303-738-5805  
Fax +1 303-738-2758  
[www.karcherna.com](http://www.karcherna.com)

**United Kingdom**

Kärcher (UK) Ltd.  
Kärcher House  
Beaumont Road  
Banbury  
Oxon OX16 1TB

Phone +44 1295-752-100  
Fax +44 1295-752-103  
[www.karcher.co.uk](http://www.karcher.co.uk)

**Ireland**

Kärcher Ltd.  
Unit 4  
E.P. Mooney Business Park  
Walkinstown Avenue  
D.12

Phone +353 1-409-7777  
Fax +353 1-409-7775  
[www.karcher.ie](http://www.karcher.ie)

**Regional Head Office  
Southeast Asia**

Kärcher South East Asia  
Pte. Ltd.  
5 Toh Guan Road East,  
#01-00 Freight Links  
Express Distripark,  
Singapore 608831

Phone +65 68971811  
Fax +65 68971611  
[www.karcher.com.sg](http://www.karcher.com.sg)

**Hong Kong**

Kärcher Ltd.  
Unit 05, 13/F, Nanyang Plaza  
57 Hung To Road  
Kwun Tong, Kowloon

Phone +852 2-357-5863  
Fax +852 2-357-5632  
[www.karcher.com.hk](http://www.karcher.com.hk)

**Australia**

Kärcher Pty. Ltd.  
40 Koornang Road  
Scoresby VIC 3179  
Melbourne, Victoria

Phone +61 3-9765-2300  
Fax +61 3-9765-2398  
[www.karcher.com.au](http://www.karcher.com.au)

**New Zealand**

Kärcher Ltd.  
66 Allens Road  
East Tamaki  
Auckland 2013

Phone +64 9-274-4603  
Fax +64 9-274-6932  
[www.karcher.co.nz](http://www.karcher.co.nz)

**South Africa**

Kärcher (Pty) Ltd.  
Corner Mount Joy &  
George Allen Road  
Wilbart Ex2  
Germiston  
Johannesburg 2008

[www.karcher.co.za](http://www.karcher.co.za)

**Dubai**

Kärcher FZE  
Quality Cleaning Systems  
Jebel Ali Free Zone  
Plot No. S-10104 South Zone  
RA 08, XB 1, Jebel Ali

Phone +971 4-886-1177  
Fax +971 4-886-1575  
[www.kaercher.com](http://www.kaercher.com)