

# KÄRCHER

## Puzzi 10/1

Comfort and ergonomics with high performance



## Puzzi 10/1



### Cleans textile surfaces perfectly.

The Puzzi 10/1 spray extractor is specifically suited for cleaning of carpets and upholstery. The new floor tool with handhold offers comfortable ergonomic operation, guaranteeing optimal vacuuming at any angle. The powerful suction turbine on the flexible floor tool provides superior suction which decreases drying times (up to 30% faster). The Puzzi 10/1 also features new accessory storage and cable hook for the power cord.



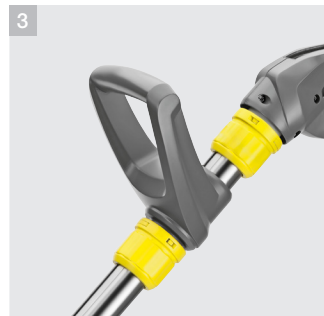
**1 Flexible floor tool 9"**

- Superior extraction at every angle due to the flexible floor tool.



**2 Hand tool**

- The hand tool provides a comfortable connection with the spray hose.



**3 Handhold**

- High ergonomics deposited due to the adjustable additional handle without tools.
- Adjustable handle makes it easy and comfortable operation by the user in every height.



**4 Cleaning in vehicles**

- Integrated fixings for easy stowing and removal of accessories.
- Comfortable storage of cables enables an optimal storage of the machine.

# Technical data and features

## Puzzi 10/1

- Removable dirty water tank
- Powerful suction turbine
- Extra handle on floor nozzle

### Technical data

Air flow rate	cfm	114 (3.2 m <sup>3</sup> /min)
Water lift	inches	82 (208 cm)
Spray rate	gpm	0.26 (0.98 l/min)
Spray pressure	psi	14.5 (1 bar)
Tank, fresh water	gallons	2.6 (9.8 l)
Tank, dirt water	gallons	2.3 (8.7 l)
Sound level		68 dBA
Weight	lbs	23 (10.4 kg)
Dimensions (L x W x H)	inches	28 x 13 x 17 (71 x 33 x 43 cm)

### Equipment

Spray hose 8 ft.	■
Floor tool kit with handhold	■
Upholstery tool	■
Hand tool	■
Flexible floor tool 9" (included in the floor tool kit)	■
Suction tube (included in the floor tool kit)	■
Handhold (included in the floor tool kit)	■

### Optional Accessories

Hard surface adapter	<input type="checkbox"/>
Flexible squeegee assembly	<input type="checkbox"/>
Defoamer metering	<input type="checkbox"/>
Crevice tool	<input type="checkbox"/>
Cleaning agent tank	<input type="checkbox"/>
16-pack cleaning tablets - RM 760	<input type="checkbox"/>
22-lb pail of cleaning powder - RM 760	<input type="checkbox"/>
<b>Order No.</b>	<b>1.100-133.0</b>

■ Included in delivery.

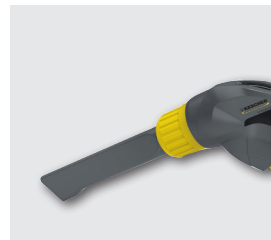
Accessories:



Spray suction hose



Upholstery tool



Crevice tool



Floor tool kit with handhold

**For more information:**

**Kärcher Canada**

6535 Millcreek Drive Unit 67  
Mississauga, ON L5N 2M2  
Canada

Phone 905-672-8233

Fax 905-672-3155

[www.karcher.ca](http://www.karcher.ca)