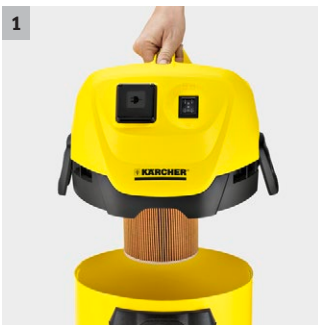
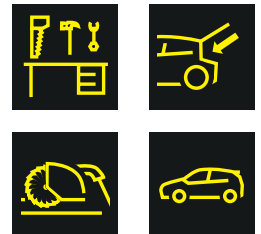




## WD 3 P

Takes whatever you can throw at it! The super-powerful WD 3 P Wet & Dry Vacuum Cleaner is fitted with a 17-litre plastic container and a power outlet with an automatic on/off switch.



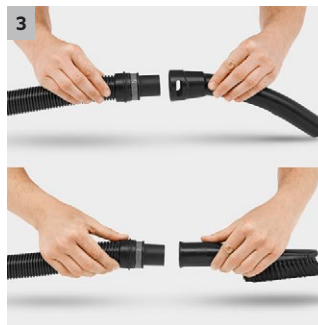
### 1 Special cartridge filter

- For wet and dry suction without changing the filter.



### 2 Newly developed floor nozzle and suction hose

- For perfect cleaning results, with dry or wet, fine or coarse dirt.
- For maximum convenience and flexibility when vacuuming.



### 3 Removable handle

- Offers the possibility of attaching different nozzles directly on the suction hose.
- For easy vacuuming even in the tightest of spaces.



### 4 Power outlet with automatic on/off control for work with power tools

- Dirt created during planning, sawing or sanding is removed directly.
- The suction device is automatically switched on/off via the power tool.



## WD 3 P

- Power outlet with automatic on/off control for applications with power tools
- Newly developed accessories for perfect cleaning results
- Practical blower function

### Technical data

|                               |                  |                     |
|-------------------------------|------------------|---------------------|
| <b>Order No.</b>              | 1.629-892.0      |                     |
| <b>EAN code</b>               | 4054278466682    |                     |
| <b>Type of current</b>        | <b>Volt / Hz</b> | 220 - 240 / 50 - 60 |
| <b>Real suction power*</b>    | <b>Air Watt</b>  | 200                 |
| <b>Energy use</b>             | <b>Watt</b>      | 1000                |
| <b>Container capacity</b>     | <b>l</b>         | 17                  |
| <b>Container material</b>     | Plastic          |                     |
| <b>Nominal accessory size</b> | <b>mm</b>        | 35                  |
| <b>Power cord</b>             | <b>m</b>         | 4                   |
| <b>Weight</b>                 | <b>kg</b>        | 5,7                 |
| <b>Dimensions (L x W x H)</b> | <b>mm</b>        | 388 x 340 x 502     |

### Equipment

|   |                      |                        |  |   |
|---|----------------------|------------------------|--|---|
| <b>Suction hose</b>                               | <b>m</b>             | 2                      | <b>Parking position</b>                | ■ |
| <b>Removable handle</b>                           |                      | ■                      | <b>Accessory storage on the device</b> | ■ |
| <b>Suction tubes</b>                              | <b>Unit x m / mm</b> | 2 x 0,5 / 35 / Plastic | <b>Sturdy bumper</b>                   | ■ |
| <b>Wet and dry floor nozzle</b>                   |                      | Clips                  |  |   |
| <b>Crevice nozzle</b>                             |                      | ■                      |  |   |
| <b>Adapter for connecting electric tools</b>      |                      | ■                      |  |   |
| <b>Paper filter bag</b>                           | <b>Unit</b>          | 1                      |  |   |
| <b>Cartridge filter</b>                           |                      | two-part               |  |   |
| <b>Socket-outlet with automatic on/off switch</b> |                      | ■                      |  |   |
| <b>Blower function</b>                            |                      | ■                      |  |   |
| <b>Cable hook</b>                                 |                      | ■                      |  |   |

■ Included in delivery.

# WD 3 P

## 1.629-892.0

**KÄRCHER**



|   |    | Order No.   | Quantity |  |  |  | Price | Description   |                                     |
|---|----|-------------|----------|--|--|--|-------|---|-------------------------------------|
| <b>Filters</b>  |    |             |          |  |  |  |       |   |                                     |
| Cartridge filter  | 1  | 6.414-552.0 | 1 Unit   |  |  |  |       | Kärcher cartridge filter suitable for wet and dry use without filter replacement.   | <input checked="" type="checkbox"/> |
| Cartridge filter WD/SE  | 2  | 2.863-303.0 | 1 Unit   |  |  |  |       |   | <input type="checkbox"/>            |
| Filter bag fleece WD 2/3 4pc                                    | 3  | 2.863-314.0 | 4 Unit   |  |  |  |       |   | <input type="checkbox"/>            |
| Paper filter bag  | 4  | 6.959-130.0 | 5 Unit   |  |  |  |       | High-performance 2-ply paper filter bag. High-strength filter bags for reliable fine dust retention. Contains: 5 bags   | <input type="checkbox"/>            |
| <b>Nozzles</b>  |    |             |          |  |  |  |       |   |                                     |
| Car nozzle  | 5  | 2.863-316.0 | 1 Unit   |  |  |  |       |   | <input type="checkbox"/>            |
| Switchable wet and dry floor nozzle with integrated parking nib | 6  | 2.863-000.0 | 1 Unit   |  |  |  |       | Switchable wet and dry vacuum nozzle for perfect dirt intake. Easy adaptation to wet or dry dirt using foot switch. For all Kärcher Home & Garden multi-purpose vacuum cleaners.                                | <input type="checkbox"/>            |
| Car vacuuming tool  | 7  | 2.863-145.0 | 1 Unit   |  |  |  |       | Handy car vacuuming tool for quick and easy cleaning - from the footwell to the boot.   | <input type="checkbox"/>            |
| Crevice nozzle extra long WD *ww                                | 8  | 2.863-306.0 | 1 Unit   |  |  |  |       |   | <input type="checkbox"/>            |
| <b>Accessory kits</b>   |    |             |          |  |  |  |       |   |                                     |
| Car interior cleaning kit                                       | 9  | 2.863-225.0 |          |  |  |  |       | Optimised car interior cleaning kit for complete car interior cleaning: from the dashboard to car seats, upholstered surfaces, foot mats, crevices, gaps and car boots.   | <input type="checkbox"/>            |
| Brush car set   | 10 | 2.863-221.0 | 2 parts  |  |  |  |       | The suction brush set allows thorough car interior cleaning that is appropriate to the material being cleaned, from dashboards to foot mats and upholstered surfaces. For all Home & Garden multi-purpose vacs. | <input type="checkbox"/>            |
| Home kit  | 11 | 2.863-002.0 | 2 parts  |  |  |  |       | The Home kit MV includes a switchable dry vacuum nozzle and an upholstery nozzle. The practical accessory kit is suitable for all Kärcher multi-purpose vacuum cleaners from the Home & Garden area.            | <input type="checkbox"/>            |
| Vacuum kit for power tools                                      | 12 | 2.863-112.0 | 2 parts  |  |  |  |       | Flexible suction hose (1 m) including adapter for connecting hose to the dust exhaust connection of power tools (e.g. jigsaws, grinders, drills, planes, etc.) For clean DIY.                                   | <input type="checkbox"/>            |
| Car interior cleaning kit *WW                                   | 13 | 2.863-304.0 | 6 parts  |  |  |  |       |   | <input type="checkbox"/>            |
| <b>Special applications</b>                                     |    |             |          |  |  |  |       |   |                                     |
| Basic coarse dirt/ash filter                                    | 14 | 2.863-139.0 |          |  |  |  |       | Coarse dirt/ash filter for cleaning fireplaces, tiled stoves, barbecues, sauna ovens, etc., as well as removing coarse dirt.  | <input type="checkbox"/>            |
| Premium coarse dirt/ash filter                                  | 15 | 2.863-161.0 |          |  |  |  |       | Premium coarse dirt/ash filter with fine filter suitable for cleaning fireplaces, tiled stoves, barbecues, sauna ovens, etc., as well as removing coarse dirt.  | <input type="checkbox"/>            |
| Drilling dust tool Home & Garden *int                           | 16 | 2.863-234.0 |          |  |  |  |       |   | <input type="checkbox"/>            |
| Extension suction hose 3,5m *WW                                 | 17 | 2.863-305.0 |          |  |  |  |       |   | <input type="checkbox"/>            |
| Extension suction tube WD ID 35 *ww                             | 18 | 2.863-308.0 |          |  |  |  |       |   | <input type="checkbox"/>            |

■ Included in delivery. □ Available accessories.