

## NT 40/1 TACT TE L

The NT 40/1 Tact Te L is designed for the pickup of very large quantities of hazardous dusts, suitable for dust class L. It is robust yet highly mobile, featuring a 40 litre container.



**Order no.** 1.148-314.0

- PES flat pleated filter
- Antistatic preparation
- Optional push handle

### Technical data

<b>EAN code</b>		4054278299938
<b>Current type</b>	<b>Ph / V / Hz</b>	1 / 220 - 240 / 50 - 60
<b>Air flow</b>	<b>l/s</b>	74
<b>Vacuum</b>	<b>mbar / kPa</b>	273 / 27.3
<b>Container content</b>	<b>l</b>	40
<b>Container material</b>		Plastic
<b>Rated input power</b>	<b>W</b>	max. 1380
<b>Standard nominal size</b>		ID 35
<b>Cable length</b>	<b>m</b>	7.5
<b>Sound pressure level</b>	<b>dB(A)</b>	69
<b>Weight without accessories</b>	<b>kg</b>	14.4
<b>Weight incl. packaging</b>	<b>kg</b>	19.6
<b>Dimensions (L × W × H)</b>	<b>mm</b>	560 × 370 × 655

### Equipment

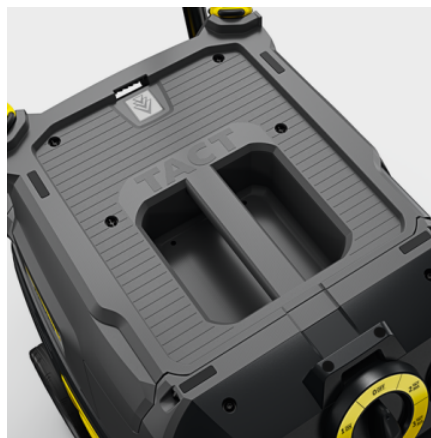
<b>Suction hose</b>	<b>m</b>	4 / with bend
<b>Suction Tube</b>	<b>Piece(s) × mm</b>	2 × 550 / Stainless steel
<b>Filter bag</b>	<b>Piece(s)</b>	1 / Fleece
<b>Wet and dry floor tool</b>	<b>mm</b>	360 / standard
<b>Crevice nozzle</b>	■	
<b>Connector for electric tools</b>	■	
<b>Auto shutdown when max. level is reached</b>	■	
<b>Automatic on/off control for electric power tools</b>	■	
<b>Antistatic system</b>	■	
<b>Flat pleated filter</b>		PES
<b>Filter cleaning</b>		Tact - Auto Filter Clean System
<b>Sturdy bumper</b>	■	
<b>Safety class</b>		I
<b>Caster with brake</b>	■	

■ Included in delivery.



### Suction hose connection in the machine head

- The suction hose port in the machine head enables a larger usable container capacity.
- Easy emptying of the container by connecting the hose and machine head.



### Storage rack and fixing options

- Tool boxes can be placed on the flat machine head without slipping thanks to its rubberised surfaces.
- Transport eyelets facilitate secure fixing with conventional anchoring straps.



### Optional push handle

- The optional push handle can be mounted quickly and easily for convenient transport to the location of use.

## EQUIPMENT FOR NT 40/1 TACT TE L

### 1.148-314.0



		Order no.	Description	
<b>FLAT PLEATED FILTER, STANDARD, BIA C OR UP TO DUST CLASS M</b>				
<b>Flat pleated filter (PES)</b>				
Flat-pleated filter packaged PES	1	6.907-662.0		■
<b>Flat pleated filter (paper)</b>				
Flat filter only for replacement Kaerche	2	6.904-367.0	Paper flat pleated filter (dust class M) suitable for NT 361, NT 561, NT 611 Eco/Te/M and NT 35/1, NT 45/1, NT 55/1 Eco/Eco Te/Eco M.	□
<b>Flachfaltfilter (PTFE)</b>				
Flat pleated filter, PTFE	3	6.907-455.0	Polyester fleece with PTFE coating for single-motor Tact and Ap vacuum cleaners, dust class M. Particularly suitable for very adhesive materials.	□
<b>BENDS</b>				
<b>Plastic bend</b>				
Elbow packaged NW35 2K	4	2.889-170.0	Ergonomic bend for the new clip system.	■
Elbow electrically conducting packaged N	5	2.889-148.0	Ergonomic bend for the new clip system. With airflow control slide, in an antistatic design.	□
Elbow complete packaged NW35 2K	6	2.889-168.0	Ergonomic bend for the new clip system. Electrically conductive design. Particularly suited to high concentrations of fine dust.	□
<b>SUCTION NOZZLES</b>				
<b>All-purpose nozzles (wet/dry)</b>				
Floor tool packaged NW35 360mm	7	2.889-152.0	360 mm wide wet and dry floor nozzle with easy-to-change inserts. Including brush strips and squeegees.	■
Combination floor tool (dry)	8	6.906-511.0	Combination floor tool with changeover function, plastic (272 mm). With stainless steel base plate, thread catcher 6.905-417.0 and DN 35 connection.	□
Floor tool DN35	9	6.906-512.0	All-purpose plastic nozzle (DN 35) with 300 mm working width. With side rollers, brush strips (6.903-278.0) and squeegees (6.903-277.0). Only for NT vacuum cleaners.	□
Floor tool neutrally DN35	10	6.906-384.0	All-purpose aluminium nozzle (DN 35) with 370 mm working width. With height-adjustable side rollers, brush strips (6.903-064.0) and oil-resistant squeegees (6.903-081.0). Only for NT vacuum cleaners.	□
Wet and dry floor nozzle	11	2.889-118.0	Multi-purpose nozzle (DN 35) for wet vacuum cleaning of large areas. Squeegee and brush are quick and easy to change.	□
<b>Crevice nozzles</b>				
Crevice nozzle wet and dry packaged NW35	12	2.889-159.0	Crevice nozzle ID 35, for new Tact range.	■
<b>All-purpose brushes</b>				
All-purpose brush	13	6.900-425.0	All-purpose brush PPN_Bristle	□
<b>Car cleaning nozzles</b>				
Ergonomic car nozzle, DN 35, 100 mm	14	2.889-356.0		□

■ Included in delivery. □ Available accessories.

## EQUIPMENT FOR NT 40/1 TACT TE L

### 1.148-314.0



	Order no.	Description	
<b>SUCTION NOZZLES</b>			
<b>Car cleaning nozzles</b>			
Car nozzle, DN 35, 90 mm	15	6.906-108.0	Angled, flat, plastic car vacuuming tool with about 90 mm working width. Only for NT vacuum cleaners. <input type="checkbox"/>
<b>Suction brushes</b>			
Suction brush DN35	16	6.903-862.0	Rotatable suction brush (DN 35) with natural bristles (cow hair). Bristle size 70x45 mm. Only CV and NT vacuum cleaners. <input type="checkbox"/>
<b>SUCTION TUBES</b>			
<b>Suction tubes stainless steel</b>			
Set suction tube stainless steel NW35 55	17	2.889-192.0	Stainless steel suction tube set (2 × 0.55 m) <input checked="" type="checkbox"/>
<b>SUCTION HOSES</b>			
<b>Suction hoses with clip system 2.0 (compatible with vacuum cleaners from model year 2017 on)</b>			
Suction hose	18	2.889-135.0	4 m suction hose with new bayonet and clip fastener. <input checked="" type="checkbox"/>
	19	2.889-134.0	2.5 m suction hose with new bayonet and clip fastener. <input type="checkbox"/>
Electrically conductive suction hose	20	2.889-136.0	Electrically conductive suction hose with new bayonet and clip fastener. Length: 2.5 m. <input type="checkbox"/>
	21	2.889-137.0	4 m suction hose with new bayonet and clip fastener. Electrically conductive. <input type="checkbox"/>
Suction hose	22	2.889-138.0	4 m suction hose with new bayonet and clip fastener. <input type="checkbox"/>
	23	2.889-139.0	Suction hose with new bayonet and clip fastener. Length: 2.5 m. <input type="checkbox"/>
Suction hose, oil-resistant	24	2.889-140.0	Oil-resistant suction hose with new bayonet and clip fastener. Length: 4 m. <input type="checkbox"/>
Electrically conductive suction hose	25	2.889-141.0	4 m, electrically conductive suction hose with new bayonet and clip fastener. <input type="checkbox"/>
	26	2.889-142.0	Suction hose, electrically conductive, with new bayonet and clip fastener. 2.5 m long. <input type="checkbox"/>
Extension hose packaged NW35 2.5m	27	2.889-145.0	Extension hose for new clip system ID 35. Length: 2.5 m. <input type="checkbox"/>
Repair set NW35	28	2.889-149.0	Repair kit ID 35 for the new clip system. <input type="checkbox"/>

■ Included in delivery. □ Available accessories.

## EQUIPMENT FOR NT 40/1 TACT TE L

### 1.148-314.0



	Order no.	Description	
<b>SUCTION HOSES</b>			
<b>Suction hoses with clip system 2.0 (compatible with vacuum cleaners from model year 2017 on)</b>			
Extension hose conductive packaged NW35	29	2.889-343.0	<input type="checkbox"/>
<b>CONNECTING SLEEVES</b>			
<b>Adapter for electric power tools, clip on, el.</b>			
Sleeve electrically conducting packaged	30	2.889-151.0	Tool adaptor with a rubber fixture and airflow control slide for the new clip system. Suitable for all current electric tools. <input checked="" type="checkbox"/>
<b>Connecting sleeve C-DN (clip on taper), EL (electroconductive)</b>			
Connection cone NW35	31	5.407-005.0	<input type="checkbox"/>
<b>Adapter for electric power tools, screwable</b>			
Power tool adapter, threaded, DN 35	32	5.453-016.0	3-way plastic adapter with fitting instructions. For DN 26 to DN 36. For connecting to an industrial DN 35 suction hose. <input type="checkbox"/>
<b>FILTER BAGS</b>			
<b>Fleece filter bags (3 ply)</b>			
Fleece filter bags, 5 x , NT 40/1, NT 50/1	33	2.889-155.0	Fleece filter bag with 40-50 litre volume. Tear-resistant, dust class M, for suction hose port in machine head. <input type="checkbox"/>
<b>FILTER T/ NT</b>			
<b>Flat pleated filter HEPA, dust class H</b>			
HEPA surface filter	34	6.904-242.0	HEPA surface filter - dust class H (HEPA 13) - with glass-fibre layers increases filter capacity when vacuuming health-endangering and carcinogenic dust. <input type="checkbox"/>
<b>Coarse filter for wet pickup</b>			
Coarse dirt filter for wet pick up	35	6.904-287.0	Coarse dirt filter with perforated metal plate and foam seal suitable for wet pick up - NT 611 Eco K & KF models. <input type="checkbox"/>
<b>Plastic sacks for dust-free disposal</b>			
Plastic bag for dust-free disposal, 10 x , NT 30/1, NT 40/1, NT 50/1	36	2.889-158.0	PE plastic sack for dust-free disposal. <input type="checkbox"/>
<b>Membrane filter / fabric filter</b>			
Candle Filter - Wood, NT 30/1, NT 40/1, NT 50/1	37	2.414-000.0	<input type="checkbox"/>
Membrane filter, NT 30/1, NT 40/1, NT 50/1	38	2.889-281.0	<input type="checkbox"/>
<b>TARGET GROUP SPECIFIC VACUUM CLEANER ACCESSORY SETS</b>			
Universal kit for industrial and commercial use	39	2.637-595.0	Accessory kit for industrial and commercial use. <input type="checkbox"/>
Car cleaning kit	40	2.862-166.0	Contains: - Car cleaning nozzle ID 35 - Upholstery/crevice tool ID 35 - Suction brush ID 35 - Connecting sleeve C 35/ ID 35 <input type="checkbox"/>
<b>OTHER ACCESSORIES FOR T AND NT</b>			
Add-on kit shearing shackle NT 40/1	41	2.643-868.0	Ergonomic push handle for NT 40/1 Tact Te L. <input type="checkbox"/>
Drilling dust tool	42	2.679-000.0	Drilling dust nozzle for dust-free vacuuming. Suitable for dry and wet and dry vacuum cleaners from Kärcher. <input type="checkbox"/>

■ Included in delivery. □ Available accessories.



## EQUIPMENT FOR NT 40/1 TACT TE L

### 1.148-314.0



43



44



45

		Order no.	Description	
<b>OTHER ACCESSORIES FOR T AND NT</b>				
Add-on kit cyclone pre-separator	43	2.863-027.0		<input type="checkbox"/>
Adapter old packaged NW35	44	2.889-312.0		<input type="checkbox"/>
Adapter connection old elektr. leitend	45	5.031-436.0		<input type="checkbox"/>

Available accessories.