

IVR 100/40 SC

The IVR 100/40 Sc offers a high filling volume with, at the same time, a small floor space. Suitable for vacuuming combustible dusts. For installation in non-explosive areas.



Made in Germany



Order no. 9.986-069.0

- Compact construction style that takes up very little floor space
- Manual filter cleaning
- Sound-damping

Technical data

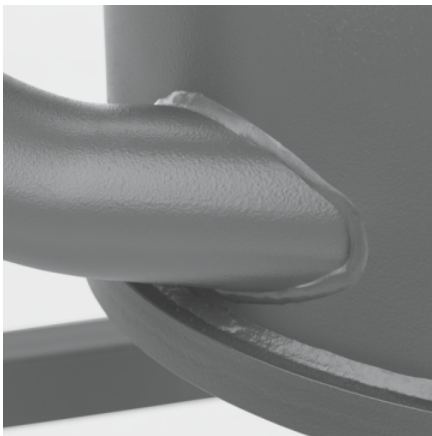
EAN code		4054278030104
Current type	Ph / V / Hz	3 / 400 / 50
Air flow	l/s / m³/h	138 / 495
Vacuum	mbar / kPa	140 / 14
Container content	l	100
Container material		Metal
Rated input power	kW	4.7
Vacuuming type		Electric
Nominal size		ID 70
Accessory nominal size		ID 50 / ID 40
Sound pressure level	dB(A)	71
Main filter dust class		M
Filter area for main filter	m²	1.75
Weight without accessories	kg	184
Weight incl. packaging	kg	200
Dimensions (L × W × H)	mm	910 × 760 × 2270

Equipment

Main filter	pocket filter
Accessories included with machine	no
Container emptying	Set down chassis

■ Included in delivery.

Users must receive training on this device.



Particularly robust, particularly flexible

- With practical, movable suction hose port/pipe bend.
- With numerous options for accessory storage.
- Machine and chassis very robust and equipped with high wall thicknesses.



Wear-resistant side channel compressor

- With 4 kW power and soft start for vacuuming large quantities of dust and solids.
- For strong suction power and service life of at least 20,000 hours.
- Optimally suited for mobile use in multiple shift operation.



Convenient, manual filter cleaning

- Effortless operation by means of an ergonomically placed lever if required.
- Extends the life of the filter and thus reduces the maintenance effort.
- Identical cleaning results, regardless of the amount of force used.

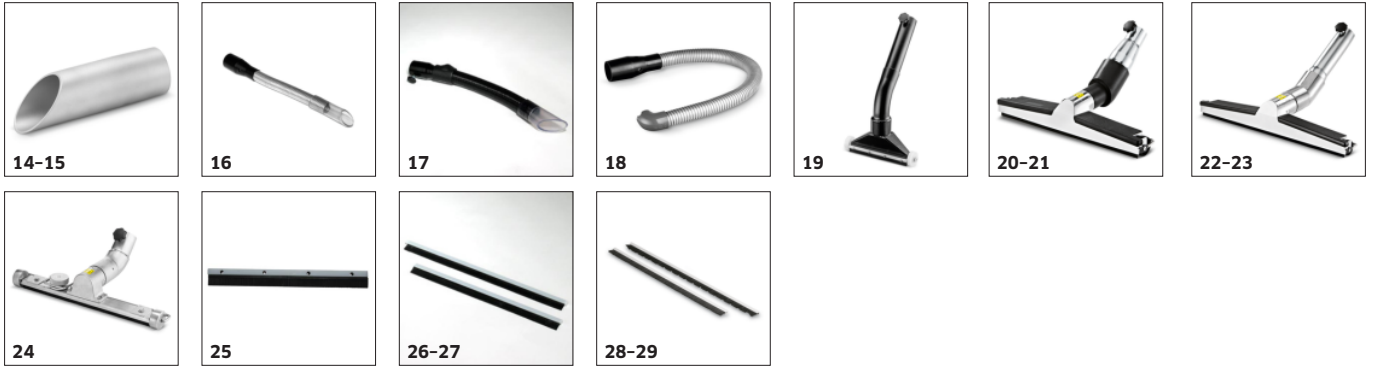
EQUIPMENT FOR IVR 100/40 SC 9.986-069.0



	Order no.	Description	
FILTERS			
Pocket- / Star filters			
Pocket filter	1 9.981-681.0		<input checked="" type="checkbox"/>
Surface filters			
Flat filter antistatic 0,45 m ² Kat. "L"	2 9.980-180.0		<input type="checkbox"/>
EMPTYING SUPPORTS			
Disposal bag holders			
Downholder	3 9.980-141.0		<input checked="" type="checkbox"/>
Disposal bags			
Disposal bags, PE, 60-100 l, 20 pcs	4 6.904-348.0	Disposal sack PE 20 pcs 60/100 l for dust-free disposal	<input type="checkbox"/>
ACCESORY SETS			
Solid / Dust			
Floor Cleaning Kit cond. Advanced DN50	5 9.990-894.0		<input type="checkbox"/>
Kit dust 3 m DN40	6 9.989-659.0		<input type="checkbox"/>
Kit solid dust DN50	7 9.989-662.0		<input type="checkbox"/>
NOZZLES			
Standard nozzles			
Standard nozzle PVC DN50	8 9.989-673.0		<input type="checkbox"/>
Standard nozzle PVC DN70	9 9.989-676.0		<input type="checkbox"/>
Nozzle elastic silicon DN42	10 9.988-401.0		<input type="checkbox"/>
Nozzle elastic silicon DN52	11 9.988-402.0		<input type="checkbox"/>
Standard nozzle Silicone DN70	12 9.989-672.0		<input type="checkbox"/>
Standard nozzle rubber cuttable DN50	13 9.989-675.0		<input type="checkbox"/>
Standard aluminium nozzle DN50	14 9.980-749.0	Diagonal nozzle made from anodised aluminium, electroconductive, DN 50.	<input type="checkbox"/>

■ Included in delivery. □ Available accessories.

EQUIPMENT FOR IVR 100/40 SC 9.986-069.0



	Order no.	Description	
NOZZLES			
Standard nozzles			
Standard nozzle Alu DN70	15	9.989-663.0	<input type="checkbox"/>
Standard nozzles bendable			
Nozzle, zinc coated, flexible, with rubber tip	16	9.981-421.0	<input type="checkbox"/>
Standard nozzle flexible PVC DN70	17	9.981-422.0	Flexible, electroconductive standard nozzle, DN 70, with rubber mouthpiece.
Standard nozzle, flexible, angled 90° PP DN50	18	9.981-430.0	Flexible, electroconductive angled nozzle, DN 50, length: 800 mm.
Floor nozzles			
Aluminium floor nozzle 200 mm DN50	19	9.981-426.0	Floor nozzle, DN 50, with 200 mm suction width.
Floor nozzle Alu 370 mm DN50	20	9.989-664.0	
Multi-purpose nozzle 370mm el. leit., DN	21	9.987-612.0	
Floor nozzle Alu 500 mm DN50	22	9.989-684.0	
Aluminium floor nozzle, el, 500 mm, DN50	23	9.981-925.0	Floor nozzle with 500 mm suction width and hinge. DN 50, electroconductive.
Multi-purpose nozzle 370mm el. leit., DN	24	9.988-115.0	
Floor nozzle rubber strip oil-resistant. 220 mm	25	9.981-923.0	Squeegee with plastic strip for floor nozzle, 220 mm wide.
Rubber lips with molding 370mm	26	9.981-914.0	
Floor nozzle rubber strip 500 mm	27	9.981-915.0	Oil-resistant squeegee with profiled strip for floor nozzle, 500 mm wide.
Bürstenleiste Satz elektr. leitend, für	28	9.984-939.0	

■ Included in delivery. □ Available accessories.

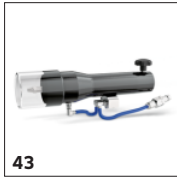
EQUIPMENT FOR IVR 100/40 SC 9.986-069.0



	Order no.	Description	
NOZZLES			
Floor nozzles			
Floor nozzle brush strip 500 mm	29	9.980-764.0	Brush strip set for floor nozzle 500 mm, with profiled strip. <input type="checkbox"/>
Crevice nozzles			
Crevice nozzle, lightweight plastic	30	9.988-117.0	<input type="checkbox"/>
Crevice nozzle PU 22 mm × 175 mm DN50	31	9.981-482.0	Crevice nozzle made from PU, DN 50. <input type="checkbox"/>
Crevice nozzle 18 mm × 120 mm DN50	32	9.981-442.0	Electroconductive crevice nozzle made from sheet steel, DN 50, with 17 mm slot width. <input type="checkbox"/>
Crevice nozzle 25 mm × 120 mm DN50	33	9.981-465.0	Electroconductive crevice nozzle made from sheet steel, DN 50, with 25 mm slot width. <input type="checkbox"/>
Crevice nozzle 28 mm × 120 mm DN70	34	9.981-444.0	Electroconductive crevice nozzle made from sheet steel, DN 70, with 30 mm slot width. <input type="checkbox"/>
Crevice nozzle slot nozzle V2A AK DN50	35	9.988-123.0	<input type="checkbox"/>
Crevice nozzles bendable			
Nozzle Langschaft Silikon DN52	36	9.988-403.0	<input type="checkbox"/>
Nozzle Crevice nozzle bendable 11 mm × 5	37	9.989-681.0	<input type="checkbox"/>
Flexible crevice nozzle 12 mm × 45 mm DN50	38	9.981-424.0	Flexible, electroconductive galvanised crevice nozzle, DN 50, with 13 mm slot width. <input type="checkbox"/>
Crevice nozzle, zinc coated, flexible	39	9.981-425.0	<input type="checkbox"/>
Surface nozzles			
Nozzle with connecting piece 90° DN50	40	9.988-119.0	<input type="checkbox"/>
Nozzle Surface nozzle Alu 150 mm DN50	41	9.989-665.0	<input type="checkbox"/>
Liquid nozzles			
Liquid nozzle 900 mm DN50	42	9.981-427.0	Bypass nozzle, DN 50, overall length: 1000 mm. <input type="checkbox"/>

Available accessories.

EQUIPMENT FOR IVR 100/40 SC 9.986-069.0



43



44



45



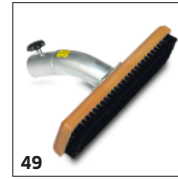
46



47



48



49

50-51, 53-54
180-185

52, 55



56, 59-60

	Order no.	Description	
NOZZLES			
Blind hole nozzles			
Nozzle Blind hole nozzle DN40	43	9.989-671.0	<input type="checkbox"/>
Nozzle Blind hole nozzle bended 60° DN40	44	9.989-669.0	<input type="checkbox"/>
Nozzle Blind hole nozzle bended 90° DN40	45	9.989-667.0	<input type="checkbox"/>
Nozzle Blind hole nozzle bended 90° 200	46	9.989-670.0	<input type="checkbox"/>
BRUSHES			
Standard brushes			
Standard brush 40 mm DN50	47	9.981-432.0	Flat brush nozzle DN 50. <input type="checkbox"/>
Pencil brushes			
Brush ø82 mm DN50	48	9.989-608.0	<input type="checkbox"/>
Surface brushes			
Vacuum brush	49	9.981-912.0	<input type="checkbox"/>
HOSES			
PVC			
Hose PVC DN50 3 m	50	9.989-615.0	<input type="checkbox"/>
Hose PVC DN50 5 m	51	9.989-616.0	<input type="checkbox"/>
Hose without connection PVC DN50 15 m	52	9.989-634.0	<input type="checkbox"/>
Hose PVC DN70 3 m	53	9.989-635.0	<input type="checkbox"/>
Hose PVC DN70 5 m	54	9.989-643.0	<input type="checkbox"/>
Hose without connection PVC DN70 15 m	55	9.989-636.0	<input type="checkbox"/>
EVA			
Extension hose EVA el. DN52 3m	56	9.988-090.0	<input type="checkbox"/>

Available accessories.

EQUIPMENT FOR IVR 100/40 SC 9.986-069.0



57



58, 61



56, 59-60



62-63



64-65, 67-68,
186-191



66, 69



70, 71, 73, 74,
192-195

	Order no.	Description	
HOSES			
EVA			
Extension hose EVA el. DN52 5m	57	9.988-091.0	<input type="checkbox"/>
Hose without connection EVA DN50 15 m	58	9.989-631.0	<input type="checkbox"/>
Hose EVA DN70 3 m	59	9.989-613.0	<input type="checkbox"/>
Hose EVA DN70 5 m	60	9.989-624.0	<input type="checkbox"/>
Hose without connection EVA DN70 15 m	61	9.989-632.0	<input type="checkbox"/>
ME			
Hose connection kit DN50	62	9.989-628.0	<input type="checkbox"/>
Hose connection kit DN70	63	9.989-629.0	<input type="checkbox"/>
PU			
Hose PU DN50 3 m	64	9.989-619.0	<input type="checkbox"/>
Hose PU DN50 5 m	65	9.989-620.0	<input type="checkbox"/>
Hose without connection PU DN50 15 m	66	9.989-638.0	<input type="checkbox"/>
Hose PU DN70 3 m	67	9.989-644.0	<input type="checkbox"/>
Hose PU DN70 5 m	68	9.989-645.0	<input type="checkbox"/>
Hose without connection PU DN70 15 m	69	9.989-639.0	<input type="checkbox"/>
ME-PU			
Hose ME-PU DN50 3 m	70	9.989-623.0	<input type="checkbox"/>

Available accessories.

EQUIPMENT FOR IVR 100/40 SC 9.986-069.0



	Order no.	Description	
HOSES			
ME-PU			
Hose ME-PU DN50 5 m	71	9.989-625.0	<input type="checkbox"/>
Hose without connection ME-PU DN50 15 m	72	9.989-641.0	<input type="checkbox"/>
Hose ME-PU DN70 3 m	73	9.989-646.0	<input type="checkbox"/>
Hose ME-PU DN70 5 m	74	9.989-648.0	<input type="checkbox"/>
Hose without connection ME-PU DN70 15 m	75	9.989-642.0	<input type="checkbox"/>
HANDLES			
Elbow aluminium 45° DN40	76	9.989-544.0	<input type="checkbox"/>
Elbow aluminium 45° DN50	77	9.989-547.0	<input type="checkbox"/>
Hand grip 45°, DN 52 ohne Sterngriff	78	9.977-678.0	<input type="checkbox"/>
Hand grip curved 45°, DN 72	79	9.977-677.0	<input type="checkbox"/>
Hand grip curved stainless steel 45°, IK	80	9.988-111.0	<input type="checkbox"/>
SUCTION TUBES			
Suction tube carbon 1500mm DN40	81	9.989-552.0	<input type="checkbox"/>
Suction tube carbon 1500mm DN50	82	9.989-553.0	<input type="checkbox"/>
Extension pipe 850mm DN 50, SBC	83	9.977-531.0	<input type="checkbox"/>
Suction tube, screw connection	84	9.981-910.0	<input type="checkbox"/>

Available accessories.

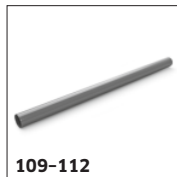
EQUIPMENT FOR IVR 100/40 SC 9.986-069.0



	Order no.	Description	
SUCTION TUBES			
Extension pipe stainless steel DN50 US	85 9.989-038.0		<input type="checkbox"/>
Hand grip curved stainless steel 45°IK D	86 9.989-035.0		<input type="checkbox"/>
Extension pipe stainless steel DN40 US	87 9.989-039.0		<input type="checkbox"/>
Extension pipe stainless steel DN50 IK,	88 9.988-114.0		<input type="checkbox"/>
ADAPTERS / REDUCERS / DISTRIBUTORS			
Adapter Accessory			
Adapter DN50/DN51	89 9.989-603.0		<input type="checkbox"/>
Adapter DN51/DN50	90 9.989-601.0		<input type="checkbox"/>
Adapter DN50/DN61	91 9.989-602.0		<input type="checkbox"/>
Adapter DN61/DN50	92 9.989-604.0		<input type="checkbox"/>
Reducers			
Reducer DN 70/DN 50 (SBC)	93 9.977-772.0		<input type="checkbox"/>
Reducer DN70/DN40	94 9.989-690.0		<input type="checkbox"/>
Reduction DN50 to DN40	95 9.981-231.0	Reducer from DN 50 to DN 40. Material: Steel. Electroconductive.	<input type="checkbox"/>
Reducer V2A DN72 auf DN52	96 9.989-712.0		<input type="checkbox"/>
Reducer V2A DN70/DN40	97 9.989-713.0		<input type="checkbox"/>
Expanders			
Expansion DN50 to DN70	98 9.981-921.0	Reducer from external cone DN 50 to internal cone DN 70. Material: Steel. Electroconductive.	<input type="checkbox"/>

Available accessories.

EQUIPMENT FOR IVR 100/40 SC 9.986-069.0



	Order no.	Description	
ADAPTERS / REDUCERS / DISTRIBUTORS			
Distributors			
Distributor DN70/DN50/DN50	99	9.989-611.0	<input type="checkbox"/>
Y-adapter ID 52 to 2 x ID 42	100	9.981-149.0	<input type="checkbox"/>
PRE-SEPARATORS			
Pre-separators			
Pre-separator station	101	9.982-238.0	Mobile pre-separator station with 110 l volume and emptying flap. <input type="checkbox"/>
Pre-separator tank dust 60 l DN40	102	9.989-687.0	<input type="checkbox"/>
Pre-separator tank dust 60 l DN50	103	9.989-688.0	<input type="checkbox"/>
Pre-separator tank 200 l	104	9.989-685.0	<input type="checkbox"/>
Pre-separator covers			
Pre-separator cover Op liquids ø 517 mm DN70	105	9.981-666.0	Pre-separator cover DN 70. Suitable for containers with 517 mm diameter. <input type="checkbox"/>
Pre-separator cover Op liquids ø 575 mm DN70	106	9.981-662.0	Pre-separator cover DN 70 for 200 litre standard drum (9.989-685.0). <input type="checkbox"/>
Pre-separator cover solid materials ø 517 mm DN70	107	9.981-665.0	Pre-separator cover DN 70. Suitable for containers with 517 mm diameter. <input type="checkbox"/>
Pre-separator cover solid materials ø 575 mm DN70	108	9.981-661.0	Pre-separator cover DN 70 for 200 litre standard drum (9.989-685.0). <input type="checkbox"/>
ACCESSORIES STATIONARY			
IV pipes			
IV pipe Ø 42.4 mm	109	9.980-451.0	<input type="checkbox"/>
IV pipe Ø 60 mm	110	9.980-452.0	<input type="checkbox"/>
IV pipe Ø 75 mm	111	9.980-453.0	<input type="checkbox"/>
IV pipe Ø 100 mm	112	9.980-455.0	<input type="checkbox"/>

Available accessories.

EQUIPMENT FOR IVR 100/40 SC 9.986-069.0



	Order no.	Description	
ACCESSORIES STATIONARY			
IV pipes			
IV pipe elbow 30° Ø 60.3 mm	113	9.980-545.0	<input type="checkbox"/>
IV pipe elbow 30° Ø 76.1 mm	114	9.980-546.0	<input type="checkbox"/>
IV pipe elbow 30° Ø 101.6 mm	115	9.980-547.0	<input type="checkbox"/>
IV pipe elbow 45° Ø 60.3 mm	116	9.980-548.0	<input type="checkbox"/>
IV pipe elbow 45° Ø 76.1 mm	117	9.980-549.0	<input type="checkbox"/>
IV pipe elbow 45° Ø 101.6 mm	118	9.980-550.0	<input type="checkbox"/>
IV pipe elbow 60° Ø 60.3 mm	119	9.980-551.0	<input type="checkbox"/>
IV pipe elbow 60° Ø 76.1 mm	120	9.980-552.0	<input type="checkbox"/>
IV pipe elbow 60° Ø 60.3 mm	121	9.980-553.0	<input type="checkbox"/>
IV pipe elbow 90° Ø 42.4 mm	122	9.985-373.0	<input type="checkbox"/>
IV pipe elbow 90° Ø 60.3 mm	123	9.980-554.0	<input type="checkbox"/>
IV pipe elbow 90° Ø 76.1 mm	124	9.980-555.0	<input type="checkbox"/>
IV pipe elbow 90° Ø 101.6 mm	125	9.980-556.0	<input type="checkbox"/>
IV pipe reduction Ø 120 mm to 100 mm	126	9.981-335.0	<input type="checkbox"/>
		Reducer, painted, made from steel with 2 mm wall thickness. For reduction from 120 to 100 mm diameter. Length: 350 mm.	

Available accessories.

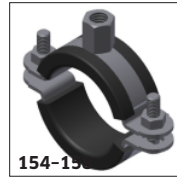
EQUIPMENT FOR IVR 100/40 SC 9.986-069.0



		Order no.	Description	
ACCESSORIES STATIONARY				
IV pipes				
IV pipe reduction Ø 120 mm to 60 mm	127	9.981-337.0	Reducer, painted, made from steel with 2 mm wall thickness. For reduction from DN 120 to DN 70. Length: 350 mm.	<input type="checkbox"/>
IV pipe reduction Ø 100 mm to 75 mm	128	9.981-334.0	Steel reducer with 2 mm wall thickness for reduction from 100 to 75 mm diameter. Length: 350 mm.	<input type="checkbox"/>
IV pipe reduction Ø 100 mm to 60 mm	129	9.981-336.0	Steel reducer with 2 mm wall thickness for reduction from 100 to 60 mm diameter. Length: 350 mm.	<input type="checkbox"/>
IV pipe reduction Ø 80 mm to 75 mm	130	9.980-494.0		<input type="checkbox"/>
IV pipe reduction Ø 80 mm to 60 mm	131	9.980-493.0		<input type="checkbox"/>
IV pipe reduction Ø 75 mm to 60 mm	132	9.981-333.0	Reducer, painted, made from steel with 2 mm wall thickness. For reduction from 75 to 60 mm diameter. Length: 350 mm.	<input type="checkbox"/>
IV pipe reduction Ø 60 mm to 42.2 mm	133	9.981-228.0		<input type="checkbox"/>
IV pipe manifold 30° branch Ø 120 mm to 100 mm	134	9.981-129.0		<input type="checkbox"/>
IV pipe manifold 30° branch Ø 120 mm to 75 mm	135	9.981-127.0		<input type="checkbox"/>
IV pipe manifold 30° branch Ø 100 mm to 75 mm	136	9.981-126.0		<input type="checkbox"/>
IV pipe manifold 30° branch Ø 100 mm to 60 mm	137	9.981-124.0		<input type="checkbox"/>
IV pipe manifold 30° branch Ø 75 mm to 60 mm	138	9.981-123.0		<input type="checkbox"/>
IV pipe manifold 30° branch Ø 60 mm to 42.4 mm	139	9.981-258.0	Pipe branch, 600 mm long, made from steel with 30° bend and 2 mm wall thickness. Diameter: 60/60/42.4 mm.	<input type="checkbox"/>
IV pipe manifold 30° branch Ø 120 mm	140	9.981-130.0		<input type="checkbox"/>

Available accessories.

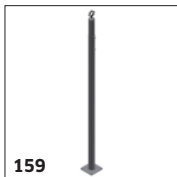
EQUIPMENT FOR IVR 100/40 SC 9.986-069.0



	Order no.	Description	
ACCESSORIES STATIONARY			
IV pipes			
IV pipe manifold 30° branch Ø 100 mm	141	9.981-128.0	<input type="checkbox"/>
IV pipe manifold 30° branch Ø 75 mm	142	9.981-125.0	<input type="checkbox"/>
IV pipe manifold 30° branch Ø 60 mm	143	9.981-122.0	<input type="checkbox"/>
IV pipe manifold 30° branch Ø 42.4 mm	144	9.981-259.0	Pipe branch, 600 mm long, made from steel with 30° bend and 2 mm wall thickness. Diameter: 42.4/42.4/42.4 mm. <input type="checkbox"/>
IV pipe manifold Y-piece Ø 120 mm to 100 mm	145	9.981-135.0	<input type="checkbox"/>
IV pipe manifold Y-piece Ø 100 mm to 75 mm	146	9.981-134.0	<input type="checkbox"/>
IV pipe manifold Y-piece Ø 80 mm to 60 mm	147	9.981-133.0	<input type="checkbox"/>
IV pipe manifold Y-piece Ø 75 mm to 60 mm	148	9.981-132.0	<input type="checkbox"/>
IV pipe manifold Y-piece Ø 60 mm to 42 mm	149	9.981-131.0	<input type="checkbox"/>
IV pipe connections / clamps			
IV pipe coupling Ø 42.4 mm	150	9.980-445.0	<input type="checkbox"/>
IV pipe coupling Ø 60 mm	151	9.980-446.0	<input type="checkbox"/>
IV pipe coupling Ø 75 mm	152	9.980-447.0	<input type="checkbox"/>
IV pipe coupling Ø 100 mm	153	9.980-449.0	<input type="checkbox"/>
IV pipe clamp Ø 41 - 44 mm	154	9.980-463.0	<input type="checkbox"/>

Available accessories.

EQUIPMENT FOR IVR 100/40 SC 9.986-069.0



	Order no.	Description		
ACCESSORIES STATIONARY				
IV pipe connections / clamps				
IV pipe clamp Ø 60 - 63 mm	155	9.980-464.0	<input type="checkbox"/>	
IV pipe clamp Ø 74 - 78 mm	156	9.980-465.0	<input type="checkbox"/>	
IV pipe clamp Ø 99 - 103 mm	157	9.980-466.0	<input type="checkbox"/>	
IV pipe clamp Ø 116 - 120 mm	158	9.980-467.0	<input type="checkbox"/>	
IV pipe floor support	159	9.981-118.0	<input type="checkbox"/>	
End piece internal cone DN40-Ø42,4x2,0	160	9.981-256.0	<input type="checkbox"/>	
IV pipe on hose adapter, female Ø 60 to DN50	161	9.981-166.0	<input type="checkbox"/>	
IV pipe on hose adapter, female Ø 75 to DN70	162	9.981-170.0	<input type="checkbox"/>	
IV pipe on hose adapter, male Ø 42.2 to DN40	163	9.981-257.0	Steel adapter with 2 mm wall thickness. For connecting pipe and hose, DN 40, to diameter 42.4 × 2.0 mm.	<input type="checkbox"/>
IV pipe on hose adapter, male Ø 60 to DN50	164	9.981-332.0	Steel reducer with 2 mm wall thickness. End piece with external cone DN 50 to diameter 60.0 × 2.0 mm.	<input type="checkbox"/>
IV pipe on hose adapter, male Ø 75 to DN70	165	9.981-195.0		<input type="checkbox"/>
Suction point accessories				
Suction point standard PVC nozzle DN40	166	9.981-454.0	Elastic nozzle DN 40 for jet cookers.	<input type="checkbox"/>
Suction point standard PVC nozzle DN50	167	9.981-455.0	Elastic nozzle DN 50 for jet cookers.	<input type="checkbox"/>
Suction point, standard brush DN40	168	9.981-436.0	Steel brush nozzle with 2.6 mm wall thickness for jet cookers, DN 40.	<input type="checkbox"/>

Available accessories.

EQUIPMENT FOR IVR 100/40 SC 9.986-069.0



169



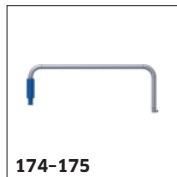
170



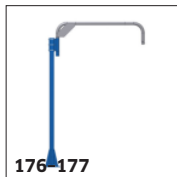
171-172



173



174-175



176-177



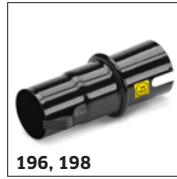
178-179

50-51, 53-54
180-185

		Order no.	Description	
ACCESSORIES STATIONARY				
Suction point accessories				
Suction point nozzle holder	169	9.981-520.0	For mounting intended nozzle holders made from steel to a wall. Suitable for nozzles with DN 40, DN 50 and DN 70.	<input type="checkbox"/>
Suction point nozzle holder with limit switch	170	9.982-111.0	Jet cookers with sensor, for wall mounting. Suitable for nozzles DN 40, DN 50 and DN 70.	<input type="checkbox"/>
Suction point hose hanger with limit switch ø 60 mm	171	9.982-083.0	Hose holder with limit switch for fastening to pipelines with 60 mm diameter.	<input type="checkbox"/>
Suction point hose hanger with limit switch ø 75 mm	172	9.982-092.0	Hose holder with limit switch for fastening to pipelines with 75 mm diameter.	<input type="checkbox"/>
Suction point hose hanger with limit switch	173	9.982-093.0	Hose holder with limit switch for wall mounting.	<input type="checkbox"/>
Suction point suction arm DN50 without hose	174	9.981-776.0	Swivel arm DN 50 with relevant wall mounting. Arm length: 2 m.	<input type="checkbox"/>
Suction point suction arm DN70 without hose	175	9.981-775.0	Swivel arm DN 70 with relevant wall mounting. Arm length: 2 m.	<input type="checkbox"/>
Suction point suction arm DN50 without hose	176	9.981-781.0	Swivel arm DN 50 with floor support (100 × 100 mm), arm length: 2 m.	<input type="checkbox"/>
Suction point suction arm DN70 without hose	177	9.981-780.0	Swivel arm DN 70 with floor support (100 × 100 mm), arm length: 2 m.	<input type="checkbox"/>
Suction point suction arm DN70	178	9.981-920.0	Suction arm DN 70 to DN 100, arm length: 2.5 m.	<input type="checkbox"/>
Suction point suction arm DN100	179	9.983-121.0	Suction arm DN 100, arm length: 2.5 m. Suction head with 150 mm diameter.	<input type="checkbox"/>
Suction point hose PVC DN40 3m	180	9.989-701.0		<input type="checkbox"/>
Suction point hose PVC DN40 5m	181	9.989-702.0		<input type="checkbox"/>
Suction point hose PVC DN50 3m	182	9.989-693.0		<input type="checkbox"/>

Available accessories.

EQUIPMENT FOR IVR 100/40 SC 9.986-069.0



	Order no.	Description	
ACCESSORIES STATIONARY			
Suction point accessories			
Suction point hose PVC DN50 5m	183	9.989-694.0	<input type="checkbox"/>
Suction point hose PVC DN70 3m	184	9.989-703.0	<input type="checkbox"/>
Suction point hose PVC DN70 5m	185	9.989-704.0	<input type="checkbox"/>
Suction point hose PU DN40 3m	186	9.989-705.0	<input type="checkbox"/>
Suction point hose PU DN40 5m	187	9.989-706.0	<input type="checkbox"/>
Suction point hose PU DN50 3m	188	9.989-695.0	<input type="checkbox"/>
Suction point hose PU DN50 5m	189	9.989-696.0	<input type="checkbox"/>
Suction point hose PU DN70 3m	190	9.989-707.0	<input type="checkbox"/>
Suction point hose PU DN70 5m	191	9.989-708.0	<input type="checkbox"/>
Suction point hose ME-PU DN40 3m	192	9.989-697.0	<input type="checkbox"/>
Suction point hose ME-PU DN40 5m	193	9.989-698.0	<input type="checkbox"/>
Suction point hose ME-PU DN50 3m	194	9.989-699.0	<input type="checkbox"/>
Suction point hose ME-PU DN50 5m	195	9.989-700.0	<input type="checkbox"/>
Hose connection rotatable DN40	196	9.989-654.0	<input type="checkbox"/>

Available accessories.

EQUIPMENT FOR IVR 100/40 SC 9.986-069.0



	Order no.	Description	
ACCESSORIES STATIONARY			
Suction point accessories			
Hose connection rotatable DN50	197 9.989-653.0		<input type="checkbox"/>
Hose connection rotatable DN70	198 9.989-652.0		<input type="checkbox"/>
Hose end piece, male DN40	199 9.981-142.0	Steel hose connection piece with 2 mm wall thickness and DN 40 external cone.	<input type="checkbox"/>
Hose end piece, male DN50	200 9.980-472.0		<input type="checkbox"/>
Hose end piece, male DN70	201 9.981-144.0	Steel hose connection piece with 2 mm wall thickness and DN 70 external cone.	<input type="checkbox"/>
Hose connection rotatable DN40 V2A	202 9.989-716.0		<input type="checkbox"/>
Tube rotatable ø54 V2A	203 9.989-714.0		<input type="checkbox"/>
Hose connection piece AK DN40 V2A	204 9.989-717.0		<input type="checkbox"/>
Hose connection outside cone DN50, V2A	205 9.989-715.0		<input type="checkbox"/>
Hose installation kit DN40 without end pieces	206 9.981-563.0	Installation kit for hose connections NW 40. Comprising 2 hose sleeves and pipe clamps.	<input type="checkbox"/>
Hose installation kit DN50 without end pieces	207 9.981-561.0	Installation kit for hose connections NW 50. Comprising 2 hose sleeves and pipe clamps.	<input type="checkbox"/>
Hose installation kit DN70 without end pieces	208 9.981-562.0	Installation kit for hose connections NW 70. Comprising 2 hose sleeves and pipe clamps.	<input type="checkbox"/>

Available accessories.