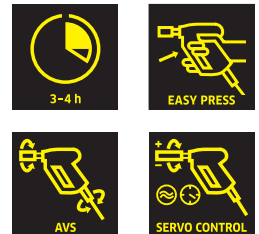




## HD 10/25-4 S

Upright cold water high-pressure cleaner. Servopress for adjustment of pressure and water flow rate directly on the trigger gun, pressure switch control, Easy-Press trigger gun with soft grip surface, pivoting stainless steel spray lance, detergent tank, separate compartment for nozzles.



### 1 Proven Kärcher quality

- 4-pole water-cooled electric motor.
- Robust brass cylinder head and ceramic piston.

### 3 For increased safety

- Integrated electronics system for machine monitoring.
- Automatic switch-off in case of low voltage range or overvoltage.

### 2 Hose storage

- With bearings on both sides, for 20 m pressure hose.
- Hose guide passes under machine for high resistance to tipping.

### 4 Outstanding mobility

- Large rubber wheels for negotiating uneven surfaces, stairs and landings.
- Proven sack truck principle for easy, ergonomic transport.



## HD 10/25-4 S

- Water-cooled three-phase motor
- Easy Press trigger gun with soft grip and Servo Control
- Maximum impact pressure for stubborn dirt

### Technical data

<b>Order no.</b>	1.286-120.0	
<b>EAN code</b>	4039784732827	
<b>Current type</b>	<b>Ph / V / Hz</b>	3 / 400 / 50
<b>Flow rate</b>	<b>l/h</b>	500-1000
<b>Working pressure</b>	<b>bar / MPa</b>	30-250 / 3-25
<b>Max. pressure</b>	<b>bar / MPa</b>	275 / 27,5
<b>Max. inlet temperature</b>	<b>°C</b>	bis zu 60
<b>Connection load</b>	<b>kW</b>	9.2
<b>Weight</b>	<b>kg</b>	62
<b>Dimensions (L × W × H)</b>	<b>mm</b>	560 × 500 × 1090

### Equipment

<b>Spray gun</b>	Easy Press trigger gun	<b>Servo Control</b>	■
<b>Spray gun with soft grip</b>	■	<b>Brass water inlet</b>	■
<b>High-pressure hose</b>	<b>m</b>		
<b>Spray lance</b>	<b>mm</b>		
<b>Triple nozzle (0°/25°/40°)</b>	Contactless		
<b>ANTI!Twist</b>	-		
<b>4-pole, three-phase motor with air and water cooling</b>	■		
<b>Pressure cut-off</b>	■		
<b>Large water fine filter</b>	■		
<b>Electronic motor protection with LED display</b>	■		
<b>Oil level indicator</b>	■		

■ Included in the scope of supply.

# HD 10/25-4 S

## 1.286-120.0

**KÄRCHER**



		Order no.	ID	Max. working pressure	Length	Price	Description	
<b>Standard with unions on both sides</b>								
High-pressure hose, 10 m, ID 8, 315 bar, extension	1	6.391-342.0	ID 8	315 bar	10 m		To extend the operating radius with the high-pressure cleaner. Connection on both sides M22 x 1.5.	▲
High-pressure hose, 15 m, ID 8, 315 bar, including rotary coupling	2	6.390-010.0	ID 8	315 bar	15 m		With screw connections on both sides, M 22 x 1.5 with bend protection.	▲
High-pressure hose, 20 m, ID 8, 315 bar, extension piece	3	6.390-031.0	ID 8	315 bar	20 m		Screw connections at both ends, M 22 x 1.5, with kink protection.	▲
High-pressure hose, 30 m, ID 8, incl. rotary coupling	4	6.390-293.0	ID 8	315 bar	30 m		To extend the operating radius with the high-pressure cleaner. Connection on both sides M22 x 1.5.	▲
High-pressure hose, 15 m, ID 10, 220 bar, extension piece	5	6.390-023.0	ID 10	220 bar	15 m		Connectors at both ends, M 22 x 1.5, with kink protection.	▲
<b>Longlife 400 with unions on both sides</b>								
High-pressure hose Longlife 400, 10 m, ID 8, including rotary coupling	6	6.388-083.0	ID 8	400 bar	10 m		10 m high-pressure hose Longlife 400 (DN 8) with rotary coupling, two layer high-strength steel wire reinforced. Connectors at both ends. M 22 x 1.5, with kink protection.	▲
High-pressure hose Longlife 400, 10 m, ID 8, extension	7	6.391-354.0	ID 8	400 bar	10 m		To extend the operating radius with the high-pressure cleaner. Connection on both sides M22 x 1.5.	▲
High-pressure hose Longlife 400, 15 m, ID 8, including rotary coupling	8	6.389-709.0	ID 8	400 bar	15 m		With rotary coupling, 2 x M 22 x 1.5	▲
High-pressure hose Longlife 400, 20 m, ID 8, extension	9	6.390-027.0	ID 8	400 bar	20 m		with rotary coupling, 2 x M 22 x 1.5	▲
High-pressure hose Longlife 400, 30 m, ID 8, including rotary coupling	10	6.390-294.0	ID 8	400 bar	30 m		With rotary coupling, 2 x M 22 x 1.5	▲
High-pressure hose 1.5 m, ID 8, including connectors	11	6.390-178.0	ID 8	400 bar	1.5 m		1.5 m high-pressure hose (DN 8, M 22 x 1.5) with kink protection and connectors at both ends. For connecting to hose reels with appropriate connector (M 22 x 1.5).	□
<b>Food industry version with unions on both sides</b>								
High-pressure hose, 10 m, DN 8, suitable for the food industry, extension piece	12	6.389-479.0	ID 8	250 bar	10 m		10 m high-pressure hose (DN 8) with patented (rotating) AVS trigger gun connector. Non-discolouring outer layer for use in the food industry. M 22 x 1.5 with anti-kink sleeve.	▲
High-pressure hose, 20 m, ID 8, suitable for food industry, extension piece	13	6.389-581.0	ID 8	250 bar	20 m		20 m high-pressure hose (DN 8) with swivel coupling. Non-discolouring outer layer for use in the food industry. Connectors at both ends, M 22 x 1.5, with kink protection. NW 8/155°C/250 bar.	▲
<b>Longlife food design with screw connections at both ends</b>								
High pressure hose food ID 8, 10 m	14	6.391-864.0	ID 8	400 bar	10 m		Longlife HP hose for use in the food industry. Außen-decke## animal-grease-resistant, non-colour-bleeding material. With rotary coupling, 2 x M 22 x 1.5	▲
High-pressure hose food industry 400 bar, 20 m, ID 8, including rotary coupling	15	6.391-887.0	ID 8	400 bar	20 m			▲
<b>Standard</b>								
High-pressure hose, 10 m, ID 8, AVS trigger gun connector	16	6.390-025.0	ID 8	315 bar	10 m		10 m high-pressure hose (M 22 x 1.5) with kink protection. With patented rotating AVS trigger gun connector and manual coupling. Further data: DN 8/155°C/315 bar.	■
High-pressure hose, 15 m, ID 8, AVS trigger gun connector	17	6.390-185.0	ID 8	315 bar	15 m		15 m high-pressure hose (M 22 x 1.5) with kink protection. With patented rotating AVS trigger gun connector and manual coupling. Further data: DN 8/155°C/315 bar.	□
High-pressure hose, 20 m, ID 8, AVS trigger gun connector	18	6.390-171.0	ID 8	315 bar	20 m		20 m high-pressure hose (M 22 x 1.5) with kink protection. With patented rotating AVS trigger gun connector and manual coupling. Further data: DN 8/155°C/315 bar.	□

■ Included in the scope of supply. □ Available accessories. ▲ Extension hose.

# HD 10/25-4 S

## 1.286-120.0



		Order no.	ID	Max. working pressure	Length		Price	Description	
<b>Longlife 400</b>									
High-pressure hose Longlife 400, 10 m, ID 8, AVS trigger gun connection	19	6.391-351.0	ID 8	400 bar	10 m			With patented AVS connection in the trigger gun (rotatable) and hand screw connection, M 22 x 1.5 with kink protection. With double steel reinforcement.	<input type="checkbox"/>
High-pressure hose Longlife 400, 20 m, DN 8, AVS trigger gun connector	20	6.390-208.0	ID 8	400 bar	20 m			20 m high-pressure hose Longlife 400 (DN 8) with patented (rotating) AVS trigger gun connector and manual coupling. Two layer high-strength steel wire reinforced.	<input type="checkbox"/>
<b>Food industry version</b>									
High-pressure hose, 10 m, DN 8, AVS trigger gun connection, food, grey	21	6.390-704.0	ID 8	250 bar	10 m			Food industry version, AVS connection in the trigger gun. grey NW 8/155 °C/250 bar	<input type="checkbox"/>
High-pressure hose, 20 m, ID 8, AVS trigger gun connector, suitable for food industry, grey	22	6.390-705.0	ID 8	250 bar	20 m			20 m high-pressure hose (DN 8) with patented (rotating) AVS trigger gun connector. Non-discolouring outer layer for use in the food industry. NW 8/155°C/250 bar.	<input type="checkbox"/>
<b>Longlife food design</b>									
High-pressure hose Longlife 400, 10 m, ID 8, AVS trigger gun connection	23	6.391-885.0	ID 8	400 bar	10 m			Longlife HP hose for use in the food industry. Außen-decke## animal-grease-resistant, non-colour-bleeding material. With patented AVS connection in the pistol (pivot mounted)	<input type="checkbox"/>
High-pressure hose Longlife 400, 20 m, ID 8, AVS trigger gun connection	24	6.391-886.0	ID 8	400 bar	20 m				<input type="checkbox"/>
<b>Special hoses</b>									
High-pressure hose, 1.5 m, ID 8, incl. connection parts, curved outflow	25	6.388-886.0	ID 8	400 bar	1.5 m			Connection hose in longlife quality with 2x M22 x 1.5, with angled connection on one side.	<input type="checkbox"/>

■ Included in the scope of supply. □ Available accessories. ▲ Extension hose.

# HD 10/25-4 S

## 1.286-120.0

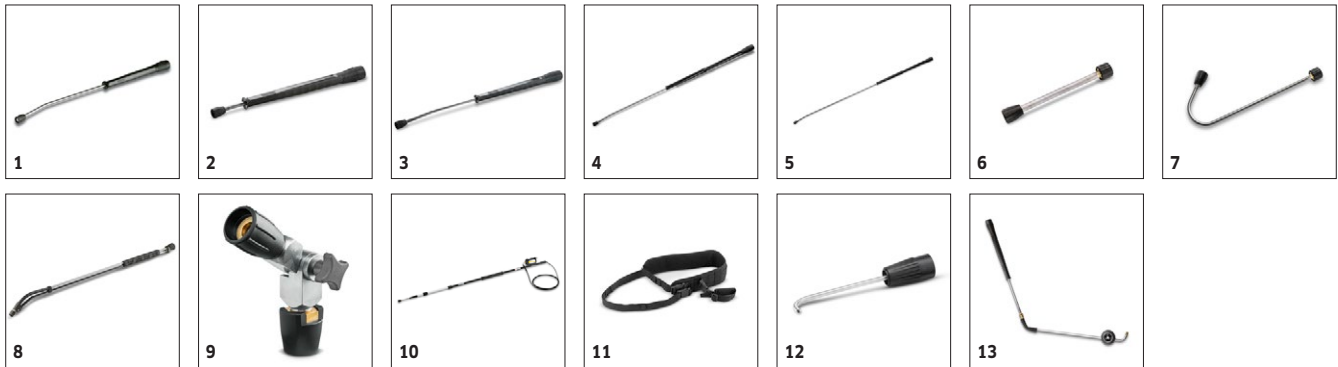


		Order no.	Flow rate				Price	Description	
<b>Easy Press high-pressure trigger gun with holding force reduction (Kärcher patent)</b>									
Easy Press HP trigger gun with soft grip	1	4.775-463.0						Easy press high-pressure trigger gun with softgrip. For high-pressure hoses DN 6 and DN 8 with 11 mm swivel diameter.	■
<b>Servo control</b>									
Servo control	2	4.775-470.0	750-1100 l/h					Water flow and pressure control on the trigger gun.	■
<b>Trigger guns</b>									
High-end HP trigger gun	3	4.775-823.0						High-end spray guns with optimised flow. Small pressure losses also with water volumes up to 2500 l/h. Robustness and durability for professional use. Food-safe and saltwater-resistant materials offer the best conditions for use in the food sector and in industry. Connector for HP hoses M 22 x 1.5.	□
<b>Quick connect</b>									
Quick coupling	4	6.401-458.0						For fast changes between different spray lances/accessories. Perfect for Kärcher spray unit, suitable for trigger gun/spray lance interface. With M 22 x 1.5 internal thread.	□
Male coupling	5	6.401-459.0						Hardened stainless steel male coupling for quick coupling 6.401-458. With M 22 x 1.5 external thread.	□

■ Included in the scope of supply. □ Available accessories. ▲ Extension hose.

# HD 10/25-4 S

## 1.286-120.0

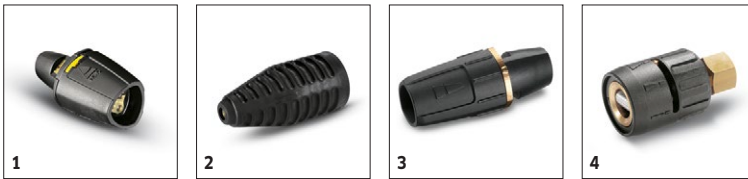


		Order no.	Max. working pressure	Length		Price	Description	
<b>Rotating spray lances</b>								
1050 mm spray pipe, rotatable	1	4.760-660.0	300 bar	1050 mm			1050 mm stainless steel lance (manual coupling) with ergonomic handle for ease of use and protection. Rotatable 360° under pressure.	■
600 mm spray pipe, rotatable	2	4.760-664.0	300 bar	600 mm			600 mm stainless steel lance (manual coupling) with ergonomic handle for ease of use and protection. Rotatable 360° under pressure.	□
Spray lance, 840 mm, rotatable	3	4.760-663.0	300 bar	840 mm			850 mm stainless steel lance (manual coupling) with ergonomic handle for ease of use and protection. Rotatable 360° under pressure.	□
1550 mm spray pipe, rotatable	4	4.760-661.0	300 bar	1550 mm			1550 mm stainless steel lance (manual coupling) with ergonomic handle for ease of use and protection. Rotatable 360° under pressure.	□
2050 mm spray pipe, rotatable	5	4.760-662.0	300 bar	2050 mm			2050 mm stainless steel lance (manual coupling) with ergonomic handle for ease of use and protection. Rotatable 360° under pressure.	□
<b>Spray lance</b>								
250 mm lance, non-rotatable	6	4.760-667.0		250 mm			250 mm stainless steel lance. With manual coupling. Non-rotatable.	□
<b>Angular spray lance</b>								
Spray lance for toilets and rain gutters	7	4.760-073.0					Stainless steel lance WC and gutter with nozzle insert. Specially shaped for effective and hygienic cleaning of gutters and toilets.	□
<b>Flexible spray lance</b>								
Flexible lance 1050 mm	8	6.394-654.0	210 bar	1050 mm			1050 mm flexible lance with variable bend from 20° to 140°, ideal for cleaning difficult to reach areas, e.g. gutters.	□
High-pressure M18x1.5 articulated joint	9	4.481-039.0	300 bar				High-pressure articulated joint: Thanks to infinite angle adjustment up to 120°, this tool is ideal to effortlessly clean hard-to-reach areas. Simply attach to the spray lance of the pressure washer.	□
<b>Telescopic spray lance</b>								
Telescopic spray lance	10	6.394-690.0	225 bar	5400 mm			Can be continuously extended from 1.8 to 5.4 m. For cleaning areas that are difficult to reach, such as ceilings or facades. With integrated HD trigger gun, M 22 x 1.5 connection with rotary coupling. Connection for M 18 x 1.5 nozzles.	□
Strap for telescopic spray pipe	11	6.373-987.0					Convenient strap for relief when working with the telescopic spray lance (6.394-690). The burden is optimally distributed on the body and longer periods of use are possible.	□
<b>Gutter cleaner</b>								
Gutter cleaning lance	12	2.642-305.0					The lance is suited for cleaning of gutter systems. Because of the shape of the lance and the special nozzle the gutter can be cleaned without removing the cover plates.	□
<b>Undercarriage spray lance</b>								
Underbody lance	13	4.760-245.0		700 mm			Stainless steel lance for effective and easy underbody and wheel arch cleaning. Without high-pressure nozzle.	□

■ Included in the scope of supply. □ Available accessories. ▲ Extension hose.

# HD 10/25-4 S

## 1.286-120.0



		Order no.	Max. working pressure	Nozzle size			Price	Description	
<b>Triple nozzle, touchless changeover</b>									
Triple nozzle, Touchless (touchless changeover)	1	4.767-065.0		50				Fast and easy jet changeover by rotating the nozzle. Choice of high-pressure point stream, high-pressure flat stream (25°), manual changeover to low-pressure flat stream (40°). For machines with injectors, the low-pressure flat stream is used for cleaning agent removal and application. M18 x 1.5 connection.	■
<b>Dirt blaster, large</b>									
Dirt blaster	2	4.763-253.0	300 bar	50				The dirt blaster with rotating pencil jet offers 10 times better cleaning performance. Ceramic nozzle and bearing ring for a long service life. Further data: Max. 300 bar, 30 MPa, 85°C.	□
<b>Triple nozzles</b>									
Triple nozzle 050	3	4.767-154.0	300 bar	50				Triple nozzle with manual nozzle changeover. Convenient spray adjustment. For high-pressure cleaners with injector, low-pressure fan jet for detergent removal and application. Connector M 18x1.5.	□
<b>Angled vario nozzle 0-90°</b>									
Spezial nozzle 0005	4	4.763-039.0		50				Variable angle nozzle for spray angle adjustment from 0° to 90°. For easy adjustment to all kinds of soiling and surfaces.	□

■ Included in the scope of supply. □ Available accessories. ▲ Extension hose.

# HD 10/25-4 S

## 1.286-120.0

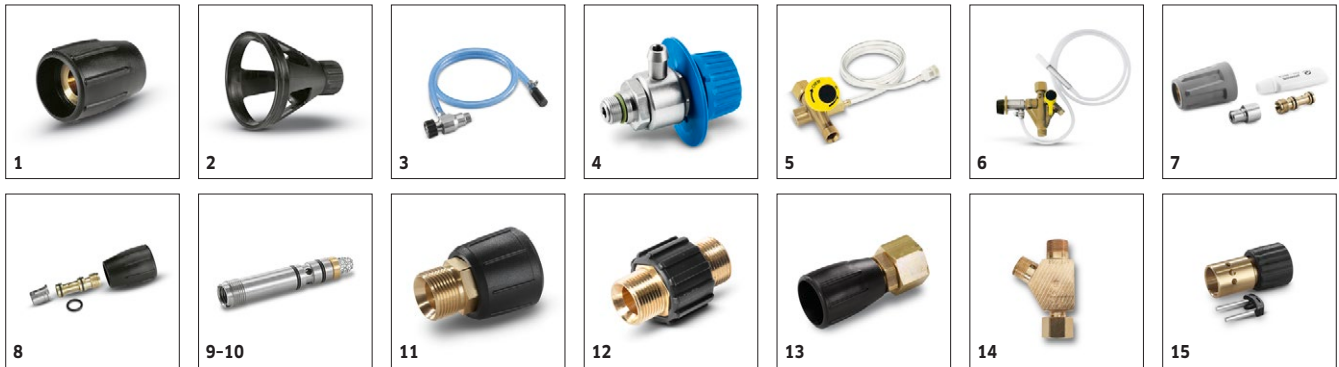


		Order no.	Nozzle size				Price	Description	
<b>Power nozzle spray angle 25°</b>									
25° power nozzle for cleaning agent suction	1	2.884-521.0	250					Brass power nozzle for low pressure operation and cleaning agent suction.	<input type="checkbox"/>

Included in the scope of supply.
  Available accessories.
  Extension hose.



# HD 10/25-4 S 1.286-120.0



		<b>Order no.</b>								<b>Price</b>				<b>Description</b>				
<b>Nozzle union</b>																		
1	Nozzle connector	5.401-210.0												For protecting and connecting Kärcher power nozzles to spray lances (M 18 x 1.5 IG).				<input type="checkbox"/>
<b>Spacer (including nozzle union)</b>																		
2	Spacer (includes nozzle screws)	5.394-294.0												Guarantees constant safety clearance, e.g. for tyres and bodywork. Helps prevent damage to sensitive surfaces. Mounts directly to lance.				<input type="checkbox"/>
<b>Cleaning agent injector</b>																		
3	Stainless steel injector kit for HD 10/25-4S	6.645-761.0												Stainless steel injector for cleaning agent and foam applications. Specifically for the HD 10/25-4 S High-pressure cleaner. For precise cleaning agent dosage.				<input type="checkbox"/>
4	Dosing valve for stainless steel injector	6.500-000.0												Retrofittable dosing valve for stainless steel injectors. For easy, convenient and precise cleaning agent dosing adjustment via a control knob.				<input type="checkbox"/>
5	Cleaning agent injector for high pressure (without nozzle)	3.637-170.0												Cleaning agent dosage at high pressure 3 - 5 %				<input type="checkbox"/>
6	Cleaning agent injector for high and low pressure (without nozzles)	3.637-001.0												Detergent injector for independent high and low pressure dosage. Maximum dosage about 15%.				<input type="checkbox"/>
<b>Machine-specific nozzle kit with order no. 4.637-033.0</b>																		
7	Nozzle kit 750-1000 l/h	4.769-011.0												For HD/HDS 750 - 1000 l/h. Consists of nozzle insert + HP				<input type="checkbox"/>
8	Nozzle kit 750-1000 l/h	4.769-047.0												power nozzle + union				<input type="checkbox"/>
<b>Nozzle insert with order no. 4.637-032.0</b>																		
9	Nozzle insert up to 1,100 l/h - high pressure	4.769-003.0												Nozzle insert for detergent injector 3.637-001 for high-pressure detergent application. For high-pressure cleaners with a water flow rate up to 1100 l/h.				<input type="checkbox"/>
10	Nozzle insert up to 1,100 l/h - low pressure	4.769-001.0												For low pressure with machines up to 1.100 l/h				<input type="checkbox"/>
<b>Rotary coupling</b>																		
11	Rotary coupling	4.401-091.0												Reliably prevents twisting of HP hoses. Connection M 22 x 1.5 m. Handle protection				<input type="checkbox"/>
<b>Coupling</b>																		
12	Coupler -2 x M22 x 1,5	4.403-002.0												For overriding the dismantled heating coil for cleaning alternative:4.111-029.0 adapter 1 - hose old / hose new				<input type="checkbox"/>
<b>Connector</b>																		
13	Nozzle screws / screw socket	4.402-022.0												Nozzle connector/screw connector for connecting high-pressure nozzles and accessories to the high-pressure trigger gun (with nozzle connector). Connectors: 1x M 22 x 1.5 and 1x M 18 x 1.5.				<input type="checkbox"/>
14	Y distributor	4.405-048.0												Offers the option to connect two spray units to the machine. Installation on the high pressure outlet.				<input type="checkbox"/>
<b>Adapters</b>																		
15	Sealing cone complete	4.424-004.0												In order to install high-pressure hose with male coupling on thread with M22 x 1.5 Alternative:4.111-032.0 Adapter 4 - Device new / Hose old Swivel				<input type="checkbox"/>
<b>EASY!Lock adapter</b>																		
16	Adapter 1 M22AG-TR22AG	4.111-029.0												Adapter 1 to connect the old hose with the new hose				<input type="checkbox"/>
17	Adapter 2 M22IG-TR22AG	4.111-030.0												Adapter 2 to connect the old device with the new hose and the old gun with the new hose				<input type="checkbox"/>
18	Adapter 3 M22IG-TR22AG	4.111-031.0												Adapter 3 to connect the old gun with the new spray lance and new servo regulator				<input type="checkbox"/>
19	Adapter 4 TR22IG-D11	4.111-032.0												Adapter 4 to connect the new gun with the old swivel hose				<input type="checkbox"/>

■ Included in the scope of supply. □ Available accessories. ▲ Extension hose.

# HD 10/25-4 S

## 1.286-120.0



		<b>Order no.</b>					<b>Price</b>	<b>Description</b>	
Adapter 5 TR22IG-M22AG	20	4.111-033.0						Adapter 5 to connect the new gun with the old spray lance and new servo regulator with the old spray lance	<input type="checkbox"/>
Adapter 6 TR22IG-M22AG	21	4.111-034.0						Adapter 6 to connect the new device with the old hose and the old hose with the new gun	<input type="checkbox"/>
Adapter 7 M18IG-TR20AG	22	4.111-035.0						Adapter 7 to connect the old spray lance with the new nozzle	<input type="checkbox"/>
Adapter 8 TR20IG-M18AG	23	4.111-036.0						Adapter 8 to connect the new spray lance with the old nozzle	<input type="checkbox"/>

■ Included in the scope of supply. □ Available accessories. ▲ Extension hose.

# HD 10/25-4 S

## 1.286-120.0



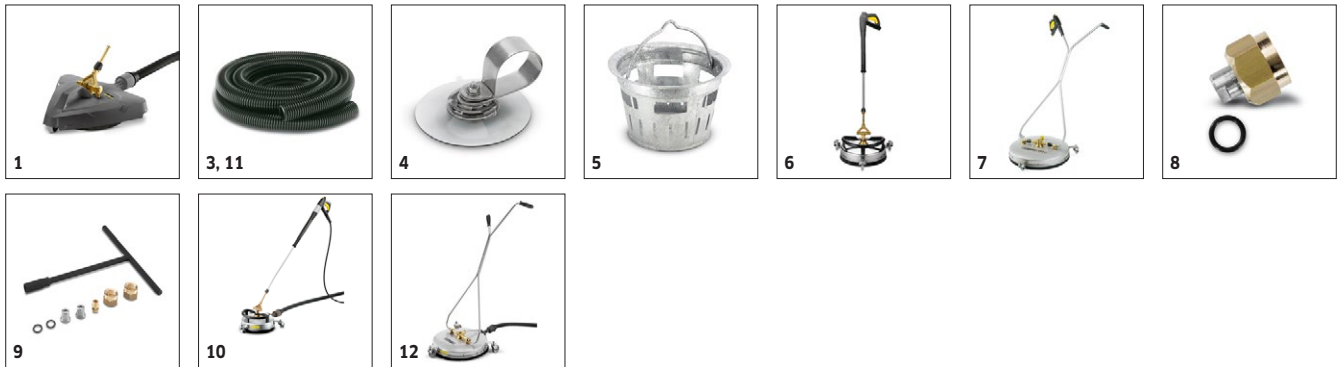
		Order no.	Max. working pressure	Nozzle size	Diameter	Price	Description	
<b>Pipe cleaning hose, ID 6</b>								
Pipe cleaning hose, DN 6, 20 m, max. 250 bar	1	6.390-030.0	250 bar				The 20 m pipe cleaning hose is a highly flexible high pressure hose for pipe interior cleaning (threaded connection for nozzle R 1/8).	<input type="checkbox"/>
<b>Pipe cleaning nozzle</b>								
Pipe cleaning dirt blaster D21/060	2	4.765-002.0		60	21 mm		The forward-tilted rotating pencil jet removes the most stubborn dirt. The three backwards-tilted jets ensure the necessary forward movement, as well as convenient handling.	<input type="checkbox"/>
Pipe cleaning dirt blaster D21/090	3	4.765-003.0		90	21 mm			<input type="checkbox"/>
Pipe cleaning dirt blaster D30/060	4	4.765-005.0		60	30 mm			<input type="checkbox"/>
Pipe cleaning dirt blaster D30/090	5	4.765-010.0		90	30 mm			<input type="checkbox"/>
Pipe cleaning nozzle 100	6	5.763-088.0		100	24 mm		Pipe cleaning nozzle with 24 mm diameter. With 4 nozzles tilted back at a 30° angle.	<input type="checkbox"/>
Pipe cleaning nozzle 120	7	5.763-089.0		120	24 mm		Pipe cleaning nozzle with 24 mm diameter. With 8 nozzles tilted back at a 30° angle.	<input type="checkbox"/>
Pipe cleaning nozzle	8	5.763-019.0		65	16 mm		16 mm pipe cleaning nozzle with internal thread. Various jet directions for environmentally-friendly cleaning of blocked drains and pipes.	<input type="checkbox"/>
	9	5.763-020.0		65	16 mm			<input type="checkbox"/>
	10	5.763-021.0		70	30 mm			<input type="checkbox"/>
Rotating pipe cleaning nozzle	11	6.415-440.0		65	16 mm		Rotating pipe cleaning nozzle with internal thread and four rotating jets for environmentally-friendly cleaning of blocked drains and pipes.	<input type="checkbox"/>
<b>HKF 50 spray head, brass</b>								
HKF 50 spray head, brass	12	3.631-039.0					Depth of immersion 850 mm. Interior cleaning head for barrels and containers with bungholes of 50 mm and more. Can be directly connected to the high-pressure cleaner. Electric motor drive. Operation is possible both vertically and horizontally	<input type="checkbox"/>
	13	3.631-058.0					Depth of immersion 150 mm. Interior cleaning head for barrels and containers with bungholes of 50 mm and more. Can be directly connected to the high-pressure cleaner. Electric motor drive. Operation is possible both vertically and horizontally	<input type="checkbox"/>
<b>Nozzle kit for spray head HKF 50 (3.631-009.0 / 3.631-039.0)</b>								
Nozzle 045 for 2-nozzle operation HKF 50	14	6.415-446.0		45			Nozzle for dual-nozzle operation	<input type="checkbox"/>
Nozzle 090 for 1-nozzle operation HKF 50	15	6.415-447.0		90			Nozzle for single-nozzle operation	<input type="checkbox"/>
Double grip for precise control of spray head	16	2.863-036.0					Double handle. Precise control of the spray head	<input type="checkbox"/>
Screw plug for using a spray head with one nozzle	17	5.411-061.0					Screw plug for using a spray head with one nozzle	<input type="checkbox"/>

■ Included in the scope of supply. □ Available accessories. ▲ Extension hose.

# HD 10/25-4 S

## 1.286-120.0

**KÄRCHER**

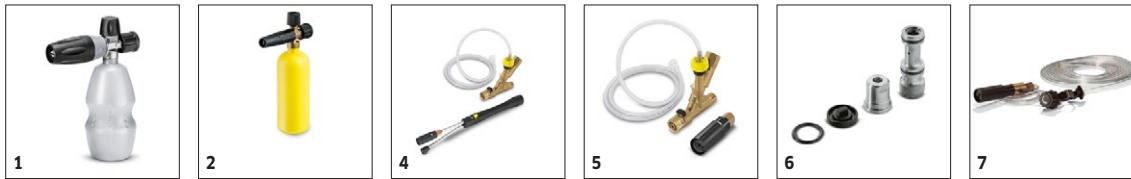


		Order no.	Flow rate	Nozzle size	Diame- ter	Price	Description	
<b>Hard Surface Cleaner FRV 30</b>								
FRV 30 surface cleaner	1	2.642-999.0					With the integrated and automatic suction of the dirty water, the FRV 30 makes surface cleaning even more efficient. There is no longer a need to rinse the surface after cleaning, as the dirty water can be removed through the 5m suction hose, which is supplied. Additional features include the non-marking steering rollers and double ceramic bearings. Machine specific nozzle kit must be ordered separately.	<input type="checkbox"/>
Rubber lip for FRV 30	2	2.642-910.0					For smooth floors indoors. The squeegee increases the suction performance of the FRV 30 and minimises the amount of water remaining. This means the floor is dry in just a few minutes.	<input type="checkbox"/>
Extension hose 5 m	3	4.440-939.0					5m extension hose for FRV 30. Connection sleeve included.	<input type="checkbox"/>
Hose fastening attachment kit	4	2.642-528.0					Suction cup for fixing the suction hose to smooth surfaces.	<input type="checkbox"/>
Dirt trap attachment kit	5	2.642-532.0					Galvanised steel bucket for collecting coarse dirt and for fixing the suction hose in outside areas.	<input type="checkbox"/>
<b>FR 30 Me surface cleaner</b>								
Hard surface cleaner FR 30 Me	6	2.640-355.0			300 mm		Hot water resistant stainless steel surface cleaner with double ceramic bearings, non-marking swivel castors and suction hose connection. Ideal for indoor cleaning, e.g. food industry.	<input type="checkbox"/>
<b>Hard Surface Cleaner FR 50</b>								
Hard surface cleaner FR 50	7	2.640-679.0			500 mm		Hot water resistant stainless steel surface cleaner with 500 mm working width. Ideal for large areas. With double ceramic bearings, push handle, non-marking swivel castors and detergent dosing system.	<input type="checkbox"/>
<b>Machine-specific nozzle kits for FR</b>								
Nozzle kit for surface cleaners	8	2.640-442.0	850-1100 l/h				Nozzle kit includes power nozzles and unions. For Kärcher surface cleaners (850 to 1100 l/h).	<input type="checkbox"/>
<b>Machine-specific nozzle kits for FRV</b>								
Nozzle kit 050 - for FRV	9	2.642-433.0		50			Machine-specific nozzle kit with Kärcher power nozzles and jet nozzle for FRV 30.	<input type="checkbox"/>
<b>FRV 30 Me surface cleaner</b>								
FRV 30 Me	10	2.642-911.0					Thanks to automatic suction of the dirty water, the stainless steel FRV 30 Me Surface Cleaner makes surface cleaning more efficient in both inside and outside areas. Hot water cleaning up to 85°C.	<input type="checkbox"/>
Extension hose FRV 30 Me and FRV 50 Me	11	4.441-040.0					5 m extension hose for FRV 30 Me. Includes connecting adapter.	<input type="checkbox"/>
<b>Surface Cleaner FR 50 Me</b>								
FRV 50 ME	12	2.643-598.0					Thanks to automatic suction of the waste water, the stainless steel FRV 50 Me surface cleaner makes surface cleaning more efficient in both inside and outside areas. Hot water cleaning up to 85 °C. The FRV 50 Me features a temperature-resistant 7.5 m polyurethane suction hose. Additional quality features are the non-marking steering rollers and double ceramic bearing. Machine-specific nozzle kit must be ordered separately. Max. 250 bar / 1,300 l/h / 85 °C.	<input type="checkbox"/>

■ Included in the scope of supply. □ Available accessories. ▲ Extension hose.

# HD 10/25-4 S

## 1.286-120.0



		Order no.	Flow rate				Price	Description	
<b>Cup foam lance</b>									
Cup foam lance Advanced 025	1	6.394-968.0						Short, handy foam lance with adjustable spray angle with 1 litre detergent tank. Ideal for cleaning cars due to its compact design.	<input type="checkbox"/>
Cup foam lance	2	6.394-668.0	1200 l/h						<input type="checkbox"/>
1-litre cleaning agent container for foam lance	3	6.414-954.0						Additional 1-litre cleaning agent container for quick replacement of the cleaning agent (for foam lance 6.394-668)	<input type="checkbox"/>
<b>Inno Foam Kit</b>									
Inno Foam Set with detergent injector	4	2.640-151.0						High-pressure foam system with double lance (foam nozzle and high-pressure jet for rinsing). For use with mobile and stationary high-pressure and HDS pressure cleaners for cleaning or disinfection.	<input type="checkbox"/>
<b>Easy Foam Set</b>									
Easy Foam Set with RM injector	5	2.640-691.0						HP foam system for use with HD/HDS units for cleaning and disinfecting. Foam nozzle for connection to lance and HP chemical injector with precision 0-5% metering valve. The machine specific nozzle kit has to be ordered separately.	<input type="checkbox"/>
<b>Nozzle kits for Inno/Easy Foam Set</b>									
Nozzle kit 090 for Inno / Easy Set 700-1,000 l/h	6	2.640-688.0	700-1000 l/h					Nozzle kit contains Kärcher power nozzles and nozzle inserts. For Inno/Easy-Foam set 700-1000 l/h. For optimal foam system performance.	<input type="checkbox"/>
<b>Foam nozzle mounting kit</b>									
Foam nozzle attachment kit	7	2.637-926.0						Foaming agent kit. The foam nozzle is ideal for use in sanitary areas and the food industry and wherever long application times are necessary.	<input type="checkbox"/>

■ Included in the scope of supply. □ Available accessories. ▲ Extension hose.

# HD 10/25-4 S

## 1.286-120.0



		Order no.	Length				Price	Description	
<b>Manual hose reel attachment kit</b>									
Hose reel attachment kit for HP super class	1	2.640-439.0	20 m					Hose reel attachment kit for installation on the machine. For secure and space-saving storage of the high-pressure hose (with a connection hose for the machine HP output). Rotatable under pressure with connection 22 x 1.5.	<input type="checkbox"/>
<b>Automatic, self-winding hose reels for wall mounting</b>									
Powder-coated swivel holder	2	2.639-931.0						Swivel holder for automatic hose reel wall mounting. For maximum action radius and flexibility of high-pressure hose. Rotatable 120°. Galvanised steel.	<input type="checkbox"/>
Stainless steel swivel holder	3	2.641-867.0						Swivelling wall bracket made of high-grade steel (for 2.641-866). This makes maximum flexibility and convenience possible when working with the HP hose.	<input type="checkbox"/>

■ Included in the scope of supply. □ Available accessories. ▲ Extension hose.

# HD 10/25-4 S

## 1.286-120.0



		Order no.	Flow rate	Inlet temperature	Length	Length	Price	Description	
<b>Solar cleaning - telescopic lances</b>									
iSolar HP hose 7	1	6.392-978.0		max. 155 °C				High-quality, flexible HP hose (with rubber covering) for the iSolar TL 7. The outer layer has especially good sliding properties when extending and retracting the telescopic rod.	<input type="checkbox"/>
iSolar HP hose 10	2	6.392-977.0		max. 155 °C				High-quality, flexible HP hose (with rubber covering) for the iSolar TL 10. The outer layer has especially good sliding properties when extending and retracting the telescopic rod.	<input type="checkbox"/>
iSolar HP hose 14	3	6.392-976.0		max. 155 °C				High-quality, flexible HP hose (with rubber covering) for the iSolar TL 14. The outer layer has especially good sliding properties when extending and retracting the telescopic rod.	<input type="checkbox"/>

■ Included in the scope of supply. □ Available accessories. ▲ Extension hose.

# HD 10/25-4 S

## 1.286-120.0



		Order no.	Nozzle size				Price	Description	
<b>Wet blasting attachment (without nozzle)</b>									
Wet blasting attachment with flow control (without nozzles)	1	4.762-010.0						Paint, rust and scale removal made easy: Kärcher wet blasting attachment with flow control for adding blasting abrasive to the high-pressure jet.	<input type="checkbox"/>
Wet blasting attachment without flow control (nozzles not included)	2	4.762-022.0						Paint, rust and scale removal made easy: Kärcher wet blasting attachment with flow control for adding blasting abrasive to the high-pressure jet. Without flow control.	<input type="checkbox"/>
<b>Nozzle kits for wet jet unit</b>									
Nozzle kit for wet jet unit 050	3	2.637-902.0	50					Nozzle kit with wet blasting nozzle and nozzle insert (type specific). For optimal Kärcher wet blasting attachment performance. Only in combination with wet blasting attachment 4.762-010/-022.	<input type="checkbox"/>
<b>Boron carbide nozzle</b>									
Boron carbide nozzle, for machines up to 1,000 l/h	4	6.415-084.0	6 mm					In addition to nozzle packs. Very wear-resistant nozzle with boron carbide chuck for continuous-duty operation.	<input type="checkbox"/>

■ Included in the scope of supply. □ Available accessories. ▲ Extension hose.



# HD 10/25-4 S

## 1.286-120.0



		Order no.					Price	Description	
<b>Attachment kit for transport</b>									
Crane loading kit for HD Super class	1	2.640-438.0						Effortless loading by crane.	<input type="checkbox"/>

■ Included in the scope of supply. □ Available accessories. ▲ Extension hose.

# HD 10/25-4 S

## 1.286-120.0



		Order no.		Price	Description	
<b>Geka coupling</b>						
Geka connector with hose barb, R 3/4"	1	6.388-455.0			with hose liner	<input type="checkbox"/>
Geka connector with internal thread, R 1"	2	6.388-458.0			with female thread	<input type="checkbox"/>
<b>Suction filter</b>						
Water suction filter	3	6.414-956.0			Suitable for ponds, storage tanks or similar, polyamide filter casing, stainless steel strainer, 800 µm mesh, R 3/4" and R 1" connection, without non-return valve	<input type="checkbox"/>
Suction filter with check valve	4	4.730-012.0			Brass suction filter suitable for ponds, storage tanks, etc. With check valve.	<input type="checkbox"/>
<b>Water fine filter</b>						
Water fine filter, with adapter	5	4.730-102.0			Fine-mesh water filter, 125 µm, max. temperature 50°C. Protects the	<input type="checkbox"/>

■ Included in the scope of supply. □ Available accessories. ▲ Extension hose.

# HD 10/25-4 S

## 1.286-120.0



6



7-8



9

		Order no.			Price	Description	
Water fine filter, 100 µm, R 1"	6	2.638-270.0				Fine-mesh water filter, 100 µm, max. temperature 60°C. Connects to	<input type="checkbox"/>
<b>Water supply hose</b>							
Water supply hose	7	4.440-207.0				NW 19 R1" / R 3/4", up to 85 °C, for pick-up	<input type="checkbox"/>
	8	4.440-270.0				NW 19 R1" / R1", up to 85 °C	<input type="checkbox"/>
<b>Backflow check valve</b>							
Backflow preventer	9	2.641-374.0				To prevent detergent getting into the drinking water cycle in case of inlet at	<input type="checkbox"/>

■ Included in the scope of supply. □ Available accessories. ▲ Extension hose.

# HD 10/25-4 S

## 1.286-120.0



		Order no.	Flow rate				Price	Description	
<b>Push-on washing brush</b>									
Push-on wash brush	1	4.762-016.0						For general-purpose cleaning of all surfaces. Clamps directly onto the spray lance. Connection M 18 x 1.5	<input type="checkbox"/>
<b>Rotating washing brush</b>									
Rotating wash brush for > 800 l/h machines	2	4.762-559.0	900-1300 l/h					Driven by water stream. Gently removes fine dust and traffic film from any surface. Temperature resistant up to 60°C, M 18 x 1.5 (replaceable brush insert).	<input type="checkbox"/>
	3	4.762-562.0	900-1300 l/h						<input type="checkbox"/>

■ Included in the scope of supply. □ Available accessories. ▲ Extension hose.