

## HD 18/50-4 CAGE CLASSIC

HD 18/50-4 Cage Classic: The ultra high-pressure cleaner from the UHP compact class with mobile "cage" design, boasting 30 kW cleaning performance, 500 bar working pressure and a 30 l/min water flow rate.



Order no.

1.367-160.0

- 4-pole air-cooled electric motor
- Water shortage protection as standard

### Technical data

EAN code		4054278223346
Working pressure	bar / MPa	max. 500 / max. 50
Flow rate	l/h	1800
Inlet temperature	°C	max. 60
Fuel		Electric
Motor rating	kW	30
Power supply	Ph / V / Hz	3 / 380 / 415 / 50
Pump type		Crankshaft
Weight without accessories	kg	307
Weight (with accessories)	kg	321
Weight incl. packaging	kg	331.5
Dimensions (L × W × H)	mm	747 × 1317 × 1093

This machine requires instruction.

### Equipment

High-pressure hose length	m	20
High-pressure hose type		Heavy duty
Spray gun		Industrial trigger gun
Stainless steel spray lance	mm	700
Flat jet nozzle		■
Safety valve		■
Elapsed time counter		■

■ included in the scope of supply.



## Outstanding mobility

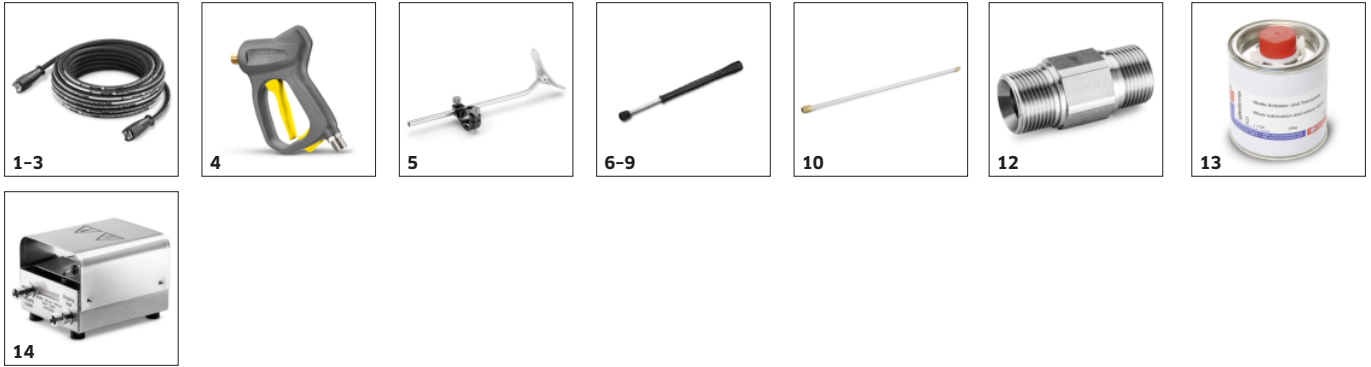
- Large wheels, as well as an optimum centre of gravity secure a high degree of mobility for the machine – despite its size.
- A practical crane hook allows simple transport, also over rough terrain.

## Large integrated water filter

- Lowers maintenance and service costs.
- Ensures long service life for all high-pressure components.

## ACCESSORIES FOR HD 18/50-4 CAGE CLASSIC

### 1.367-160.0



		Order no.	Description	
<b>ULTRA-HIGH-PRESSURE CLEANERS</b>				
<b>High-pressure hoses</b>				
Pressure hose, 20 m, 620 bar, M22 × 1.5	1	6.391-847.0	650 bar, M 22 × 1.5.	■
Pressure hose, 10 m, 620 bar, M22 × 1.5	2	6.391-846.0	650 bar, M 22 × 1.5	□
Pressure hose, 30 m, 620 bar, M22 × 1.5	3	6.391-019.0	Durable, abrasion-resistant and flexible multi-layer steel-reinforced hose with connection size M 22 × 1.5. Suitable for up to 620 bar working pressure.	□
<b>Trigger guns</b>				
Kärcher industry gun	4	4.775-824.0	650 bar – industrial spray gun with optimised flow. Robustness and durability for professional use. Food-safe and saltwater-resistant materials. Connector for HP hoses M 22 × 1.5.	■
Shoulder support	5	2.639-251.0	Sturdy shoulder support that must be used from a recoil force of more than 150 N. Fits all Kärcher industrial lances.	□
<b>Spray lances</b>				
Spray lance	6	4.760-679.0	With nozzle holder.	■
	7	4.760-653.0		□
Jet pipe complete 1550 mm 65 MPa	8	4.760-675.3		□
Spray lance	9	4.760-677.0		□
Spray lance extension	10	4.760-699.0	Spray lance extension 800 mm, 65 MPa.	□
<b>Attachment kits</b>				
Attachment kit for advance pressure pump	11	2.637-017.0	Booster pump attachment kit for reliable high-pressure pump water supply. The advance pressure pump is installed in the machine.	□
<b>Couplings and connectors</b>				
Coupling	12	4.403-004.0	For joining and extending HD hoses. Connection 2 × M 22 × 1.5. Material: Stainless steel.	□
Grease for stainless steel threaded joints	13	6.280-180.0	Grease for stainless steel screw connections.	□
<b>Pipe cleaning</b>				
Foot valve for pipe cleaning	14	6.470-223.0	Foot valve for convenient and safe use of accessories for effective pipe cleaning.	□

■ Included in the scope of supply. □ Available accessories.

## ACCESSORIES FOR HD 18/50-4 CAGE CLASSIC

### 1.367-160.0



		Order no.	Description	
<b>ULTRA-HIGH-PRESSURE CLEANERS</b>				
<b>Pipe cleaning</b>				
Pipe cleaning nozzle, standard	15	6.025-527.0	Standard pipe cleaning nozzle for pipe cleaning hoses with G1/4" threaded connection.	<input type="checkbox"/>
Pipe cleaning nozzle, Quattro	16	6.025-528.0	Chisel point nozzle with forward jet for removing the most stubborn dirt. With G1/4" threaded connection.	<input type="checkbox"/>
Pipe cleaning nozzle, rotor	17	6.025-529.0	Rotor pipe cleaning nozzle for pipe cleaning hoses with G1/4" threaded connection.	<input type="checkbox"/>
Pipe cleaning hose	18	6.392-401.0	Flexible pressure hose (DN 8) for thorough pipe cleaning. 10 m long. Threaded connection for G1/4" nozzle.	<input type="checkbox"/>
	19	6.392-402.0	Flexible pressure hose (DN 8) for thorough pipe cleaning. With threaded connection for G1/4" nozzle and 20 m long.	<input type="checkbox"/>
	20	6.392-403.0	For through pipe cleaning: flexible, 30 m long pressure hose with threaded connection for G1/4" nozzle.	<input type="checkbox"/>
<b>Surface cleaner</b>				
Surface Cleaner FRI 50 Me	21	2.643-577.0	Surface cleaner for efficient cleaning of surfaces up to 500 bar and hot water cleaning up to 100°C. 4 convenient steering rollers. Specific nozzle kits must be ordered separately.	<input type="checkbox"/>
Nozzle package 030 FRI 50 Me	22	6.415-059.0	Machine-specific nozzle kit for Surface Cleaner FRI 50 Me.	<input type="checkbox"/>
<b>Abrasive blaster</b>				
Adapter required for abrasive sprayer and TD 3000	23	5.401-325.0	M 20 × 1 IG to 9/16" UNF AG.	<input type="checkbox"/>
Abrasive blaster	24	9.917-716.0	Abrasive spray head for wet sand blasting. Nozzle size: 3 × 0.8. Only includes spray head. Without hose and lance.	<input type="checkbox"/>
Replacement nozzle for abrasive blaster	25	6.025-346.0	Replacement nozzle for abrasive spray head made from boron carbide. Colour blue.	<input type="checkbox"/>
F98 nozzle kit, D 0.80 mm	26	9.886-552.0	Three-nozzle kit with nozzle size 0.8 mm for abrasive spray head for wet sand blasting.	<input type="checkbox"/>
F98 nozzle for abrasive blaster	27	9.886-538.0	Nozzle with size 0.8 mm for abrasive spray head for wet sand blasting.	<input type="checkbox"/>
Suction lance	28	6.025-258.0	For the suction of spray agents.	<input type="checkbox"/>

■ Included in the scope of supply. □ Available accessories.

## ACCESSORIES FOR HD 18/50-4 CAGE CLASSIC

### 1.367-160.0

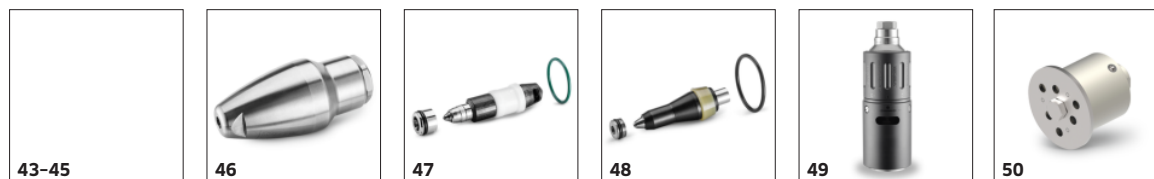


		Order no.	Description	
<b>ULTRA-HIGH-PRESSURE CLEANERS</b>				
<b>Abrasive blaster</b>				
Abrasive material hose	29	6.025-308.0	Abrasive hose.	<input type="checkbox"/>
Mounting tool for nozzle set	30	6.025-257.0	For F98 nozzles.	<input type="checkbox"/>
Abrasive	31	6.025-309.0	25 kg, 0.5–1.00 mm, garnet sand.	<input type="checkbox"/>
	32	6.025-310.0	25 kg, 0.7–1.40 mm, garnet sand.	<input type="checkbox"/>
<b>NOZZLES</b>				
<b>Power nozzles</b>				
Flat jet nozzle, 15060	33	5.765-263.0	15° flat jet nozzle 15059 for high-pressure cleaner HD 18/50. Suitable for working pressures of up to 500 bar and 1,800 l/h.	<input checked="" type="checkbox"/>
Flat jet nozzle, 15075	34	2.113-073.0	15° flat jet nozzle 15075 for high-pressure cleaner HD 18/50. Reduces the water pressure from 500 to 350 bar while retaining flow rate of 1,800 l/h.	<input type="checkbox"/>
Flat jet nozzle, 15095	35	2.113-075.0	15° flat jet nozzle 15095 for high-pressure cleaner HD 18/50. Reduces the water pressure from 500 to 250 bar while retaining flow rate of 1,800 l/h.	<input type="checkbox"/>
Flat jet nozzle, 15120	36	2.113-077.0	15° flat jet nozzle 15120 for high-pressure cleaner HD 18/50. Reduces the water pressure from 500 to 150 bar while retaining flow rate of 1,800 l/h.	<input type="checkbox"/>
Point jet nozzle, 0059	37	5.765-264.0	Point jet nozzle 0059 for high-pressure cleaner HD 18/50. Suitable for working pressures of up to 500 bar and 1,800 l/h.	<input type="checkbox"/>
Point jet nozzle, 075	38	2.113-074.0	Point jet nozzle 075 for high-pressure cleaner HD 18/50. Reduces the water pressure from 500 to 350 bar while retaining flow rate of 1800 l/h.	<input type="checkbox"/>
Point jet nozzle, 095	39	2.113-076.0	Point jet nozzle 095 for high-pressure cleaner HD 18/50. Reduces the water pressure from 500 to 250 bar while retaining flow rate of 1800 l/h.	<input type="checkbox"/>
Point jet nozzle, 120	40	2.113-078.0	Point jet nozzle 120 for high-pressure cleaner HD 18/50. Reduces the water pressure from 500 to 150 bar while retaining flow rate of 1800 l/h.	<input type="checkbox"/>
<b>Screw nozzles F21</b>				
Dummy nozzle F21	41	6.025-237.0	F21 screw-on dummy nozzle. Suitable for working pressures of up to 3,000 bar.	<input type="checkbox"/>
Round jet nozzle F21, Saphir, 0,7 mm	42	6.025-222.0	Screw-on F21 sapphire round jet nozzle with a diameter of 0.70 mm. Suitable for working pressures of up to 3,000 bar.	<input type="checkbox"/>

■ Included in the scope of supply. □ Available accessories.

## ACCESSORIES FOR HD 18/50-4 CAGE CLASSIC

### 1.367-160.0



		Order no.	Description	
<b>PROTECTIVE CLOTHING</b>				
HD Overall size M	43	6.547-055.0	High-pressure protective suit for safe working with high-pressure water jets of up to 1000 bar.	<input type="checkbox"/>
High-pressure protective suit, size L	44	6.547-056.0	Particularly lightweight design which feels comfortable to wear and provides excellent freedom of movement.	<input type="checkbox"/>
HD Overall size XL	45	6.547-057.0		<input type="checkbox"/>
<b>ROTARY NOZZLES</b>				
<b>Single-jet rotary nozzles</b>				
Power Rotary Jet F9 060, 060, 1,5 mm	46	6.415-070.0	500 bar, 1.50 mm, 1800 l/h, M 20 × 1, stainless steel.	<input type="checkbox"/>
Repair set Power Rotary Jet F9 060, 060, 1,5 mm	47	6.812-001.0	Repair set, comprising rotor, fitting and O-ring for Power Rotary Jet. Suitable for up to 500 bar pressure and water volume of 1800 litres/hour.	<input type="checkbox"/>
Power rotary jet repair kit F9	48	6.025-526.0	Repair kit for power rotary jet, order no. 6.415-060.0. Suitable for 500 bar pressure and 1,800 l/h water flow rate. Includes rotor, seat and O-ring (28 × 2).	<input type="checkbox"/>
<b>Multi-jet rotary nozzles</b>				
Nozzle body	49	9.917-677.0	Rotary transmission lead-through with infinitely variable speed control. Includes protective pipe.	<input type="checkbox"/>
Nozzle carrier head TD06	50	9.886-875.0	6-jet nozzle carrier head for F21 nozzle. Suitable for working pressures of up to 3,000 bar. 30° spray angle, includes guard and flow conditioner.	<input type="checkbox"/>

☐ Available accessories.