

## KM 70/20 C 2SB

Optimum cleaning results inside and out: the KM 70/20 C 2SB manual sweeper with 2 side brushes ensures extensive area performance and virtually dust-free sweeping.



Order no.

1.517-131.0

- Roller brush driven by both wheels
- Push handle adjustable in 3 positions
- Roller brush and side brushes continuously adjustable

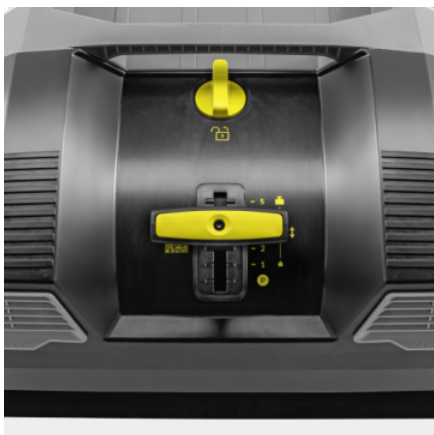
### Technical data

EAN code		4054278809519
Drive type		manual
Max. area performance	m <sup>2</sup> /h	3920
Working width	mm	480
Working width with 1 side brush	mm	700
Working width with two side brushes	mm	980
Tank volume, gross/net	l	45 / 20
Colour		anthracite
Weight (with accessories)	kg	22
Weight, ready to use	kg	22
Package weight	kg	27.5

### Equipment

Fine dust filter	■
Sweeper drive, manual	■
Main sweeper roller adjustable	■
Foldable push handle	■
Dustpan principle	■
Outdoor use	■
Indoor use	■

■ Included in the scope of supply.



## Roller brush and side brushes continuously adjustable

- Incrementally adjustable contact pressure for optimum sweeping results.
- Adjusting the contact pressure reduces sweeper roller wear.
- To protect the bristles, the sweeper roller and side brush can be completely relieved of load.



## Dust filter

- The dust filter cleans the exhaust air effectively and prevents dust from flying up during sweeping.
- The filter system is easily accessible for quick and easy replacement.

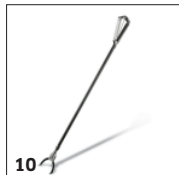
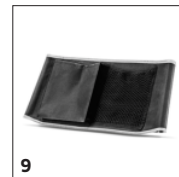
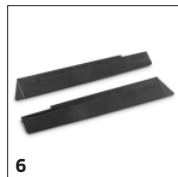
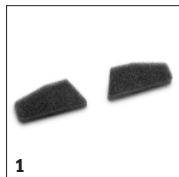


## Home Base system

- Convenient storage of additional equipment such as buckets and litter pickers.
- Accessories can be kept handy in a pocket on the push handle.

## ACCESSORIES FOR KM 70/20 C 2SB

### 1.517-131.0



	Order no.	Description	
<b>FILTERS</b>			
<b>Foam filter</b>			
Set filter	1 2.644-435.0	Plastic filter, water-resistant, washable, reduces maintenance costs.	<input checked="" type="checkbox"/>
<b>MAIN SWEEPER ROLLER</b>			
<b>Standard roller brush</b>			
Reversing rolling mill standard KM70/20	2 6.907-783.0	Tough standard roller brush with moisture-proof universal bristles for normal soiling on all surfaces. Extremely durable.	<input checked="" type="checkbox"/>
<b>Main sweeper roller, hard</b>			
Main sweeper roller, hard	3 6.903-999.0	For the removal of stubborn dirt outdoors	<input type="checkbox"/>
<b>Main sweeper roller, antistatic</b>			
Main sweeper roller, antistatic	4 6.907-023.0	For sweeping surfaces subject to static build up (e.g. carpets, artificial turf)	<input type="checkbox"/>
<b>SIDE BRUSHES</b>			
<b>Standard side brushes</b>			
Side broom standard for replacement	5 2.644-447.0	Standard side brush with moisture-proof universal bristles for normal soiling on all surfaces. Extremely durable.	<input checked="" type="checkbox"/>
<b>MISCELLANEOUS</b>			
Set side strip cpl.	6 2.644-436.0		<input checked="" type="checkbox"/>
Skirting sweep tank	7 5.030-124.0		<input checked="" type="checkbox"/>
Rear skirting	8 5.032-334.0		<input checked="" type="checkbox"/>
<b>OTHER ACCESSORIES SCRUBBER DRIERS</b>			
<b>Home Base accessories</b>			
Homebase accessory bag	9 5.032-196.0	Additional cleaning equipment can be quite easily and conveniently stowed in the accessory bag on the push handle.	<input type="checkbox"/>
ABS litter picker set	10 2.640-908.0	For picking up refuse.	<input type="checkbox"/>

■ Included in the scope of supply. □ Available accessories.