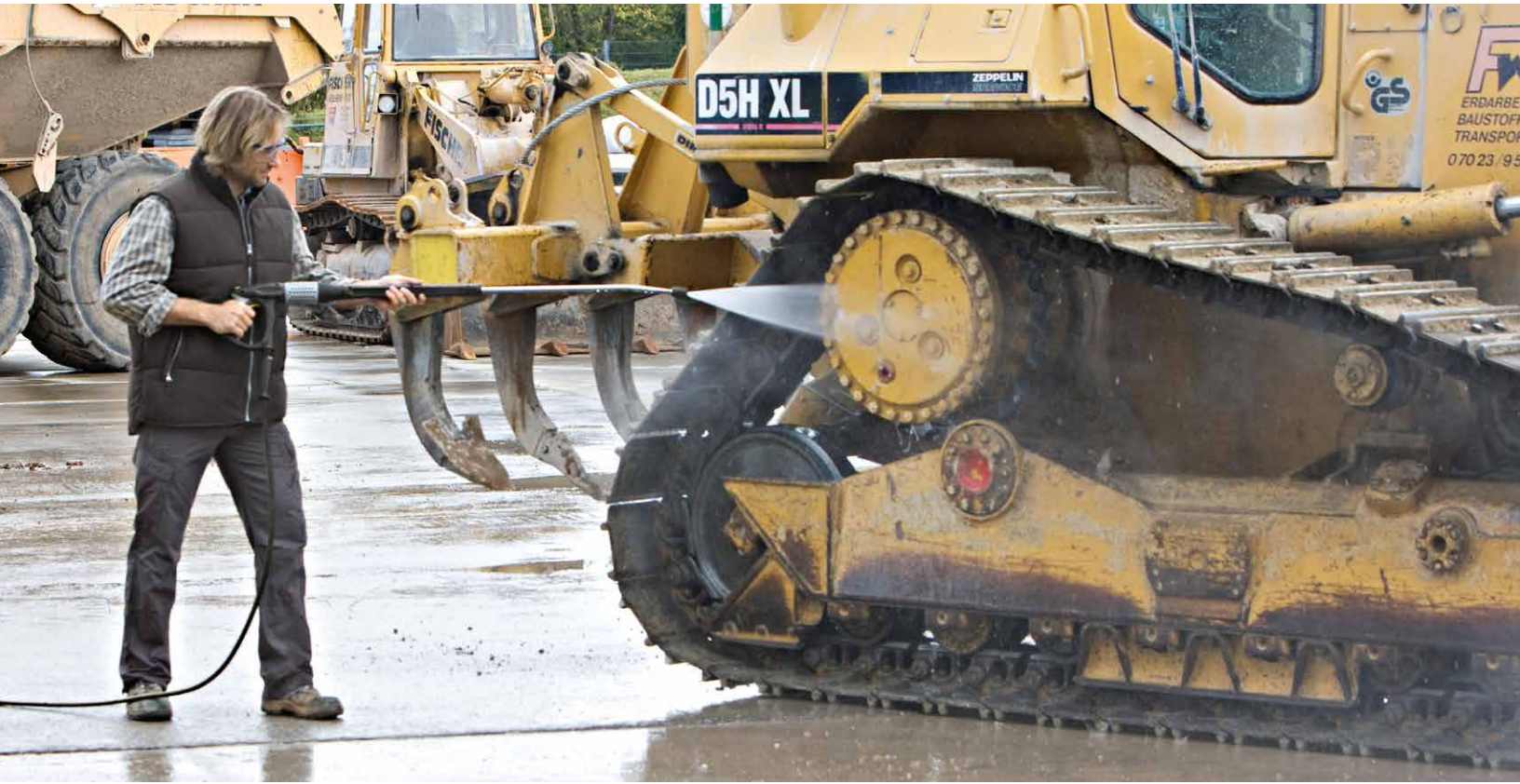


KÄRCHER

makes a difference



DURABILITY AND PERFORMANCE ANYWHERE NEEDED

Skig-mounted, gasoline-powered, hot water pressure washer

LIBERTY HDS PE CAGE



Optimum performance at remote locations.

These durable, skid-mounted models are designed for optimum cleaning performance at remote locations and feature Kärcher's unique 12V downdraft burner system. The highly compact burner is more than 92% efficient, resulting in better heat transfer using much less fuel. They feature belt-drive crankcase-style pumps. Certified to UL and CSA safety standards.



1 Powerful and durable

- Industrial-duty, tri-plunger, oil-bath, belt-drive Kärcher KT pump with 7-year warranty, brass pump head, and Tru-Trak belt adjustments; operates at a low RPM for low-maintenance operation and long life.
- Heavy-gauge 11/4" steel frame with powder coat finish for all-weather protection; with vibration isolators and forklift guides.
- Reliable gas-powered engines with electric start.
- Proprietary scale inhibiting system prevents build-up of mineral deposits inside the coil.
- 11 gallon polyethylene diesel and gasoline tanks for hours of uninterrupted operation.
- Warning lights monitor fuel and scale inhibitor levels; low-fuel shut-off protects fuel pump.

2 Smart features

- Kärcher's 92% efficient top-fired burner delivers more heat from less fuel for the lowest operating costs in the industry.
- Detergent metering valve allows for infinitely variable application of soap while washing in high-pressure mode.
- 50' Kärcher high-pressure steam hose rated for 311°F connects to the gun with an integrated swivel connection.
- Infinitely variable operating pressure, water volume, temperature control, and detergent metering.
- Unsurpassed Kärcher safety features include pressure switches, rupture disk, low-water and low-fuel protection that shuts down burner when incoming water and fuel are insufficient or interrupted.
- Ergonomically designed soft-grip Easy Press trigger gun minimizes operator fatigue.

Technical data and equipment.

Features

- Rugged frame construction
- Reliable belt-drive crankcase pumps
- Compact and highly-efficient burner
- Low-fuel cut off
- Anti-scale system - RM 110h
- Electric start engine

Technical data

Model	Part No.	GPM	PSI	Drive	CC	Engine	Fuel	Pump	Weight (lbs.)	Dimensions (L x W x H) inches
HDS 4.0/32 Pe Cage	1.575-615.0	4.0	3200	Belt	389	Honda GX390	Gas	Kärcher KT	692	51 x 33 x 43
HDS 5.0/32 Pe Cage	1.575-616.0	5.0	3200	Belt	479	Vanguard 18	Gas	Kärcher KT	760	51 x 33 x 43
HDS 5.5/35 Pe Cage	1.575-617.0	5.5	3500	Belt	688	Honda GX630	Gas	Kärcher KT	741	51 x 33 x 43

Please contact us for more information:

North America

4555 Airport Way
Denver, CO 80239
U.S.A.

Phone 888-805-9852
Fax 800-248-8409

www.karcher.com/us

Canada

6535 Millcreek Drive
Unit 67
Mississauga, ON L5N 2M2
Canada

Phone 905-672-8233
Fax 905-672-3155

www.karcher.ca