

**KÄRCHER**

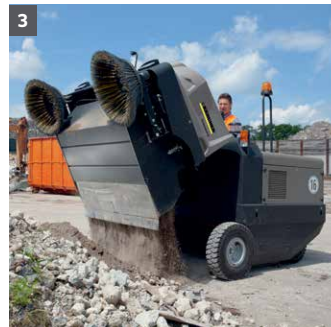
# SWEEPING COARSE DIRT TO FINE DUST. NO PROB.

Diesel-powered, ride-on sweeper  
engineered for the largest  
industrial jobs.



# Industrial sweeper for large, heavy-duty applications.

The KM 170/600 R D Classic is a diesel-powered, fully hydraulic industrial ride-on sweeper with four-wheel drive, and is engineered for heavy-duty jobs in the building materials and metal-working industries, foundries, construction sites and other dirt-intensive sectors. Its direct throw sweeping and main floating brush provide excellent cleaning results of rough swept materials and large amounts of fine dust. Two horizontally installed flat pleated filters not only ensure clean air under heavy dust conditions, but are also automatically cleaned every 10 minutes. This sweeper is robust, easy to maintain, intuitive for operators, and it complies with the new EU Stage V and EPA Tier 4 final emission standards - making it a powerful force for industrial cleaning.



## 1 Simple and intuitive operation

- Simple and intuitive operation via levers and few switches for short operator learning times and machine downtimes
- Simple maintenance, easy-access service points and tool-free changing of main brush

## 2 Premium filtration and emissions standards

- This machine doubles the lifetime of your filters - with automatic filter cleaning occurring every 10 minutes
- Filters are simple to change - without tools, protecting the operator and the environment
- Sweeper complies with the new EU stage V, as well as, EPA Tier 4 final emission standards.

## 3 Hydraulic waste container

- Economic sweeping for the largest surfaces with a 158 gallon waste container and a 5 foot hydraulic container lift

## 4 Robust and reliable

- Maximum area performance of 238,800 ft<sup>2</sup>/hr due to a 67" cleaning width, 8.7 mph and 18% climbing ability
- Long machine lifetime with a robust steel chassis, multi-corrosion protection and fully hydraulic rear traction drive (4-wheel)
- Heating and air-conditioning for increased operator comfort and safety

# Technical data and equipment.



## KM 170/600 R D CLASSIC

### TECHNICAL DATA

<b>Power / Drive</b>	<b>kW</b>	18,5, Diesel, complies with new EU Stage V and EPA Tier 4 emissions standards
<b>Cleaning path/width - main broom</b>	<b>in</b>	53
<b>Cleaning path/width - 1 side broom</b>	<b>in</b>	67
<b>Cleaning path/width - 2 side brooms</b>	<b>in</b>	79
<b>Side broom diameter</b>	<b>in</b>	26
<b>Debris container capacity</b>	<b>gal</b>	158
<b>Practical productivity - 1 side broom / 2 side broom</b>	<b>sq. ft/hr</b>	205,180 / 238,800
<b>Operating Noise Level</b>	<b>dBA</b>	82 - 103
<b>Maximum dumping height</b>	<b>in</b>	60
<b>Minimum turning radius</b>	<b>ft</b>	8.3
<b>Sweeping method</b>	<b>direct/overthrow</b>	direct
<b>Maximum working speed</b>	<b>mph</b>	8.7
<b>Maximum climbing ability</b>	<b>% grade</b>	18
<b>Weight</b>	<b>lbs</b>	3,737
<b>Dimensions (L x W x H)</b>	<b>in</b>	96 x 69 x 65.75

### EQUIPMENT

Order No.	Description
9.800-891.0	KM 170/600 R D Classic, 1 side broom, flat pleated filter (10 m2) with automatic filter cleaning system

### ACCESSORIES

Order No.	Description
■ 6.987-441.0	Main Roller Brush, regular - standard
■ 6.987-467.0	Side Brush, regular - standard
■ 6.987-969.0	Rear-view mirror
■ 6.988-160.0	Flat pleated filter, green - 2 required to fill the filter compartment
■ 6.987-928.0	Ignition Key
□ 2.852-082.0	Front/rear lights
□ 2.852-802.0	Blue spot light
□ 6.373-014.0	Comfort seat
□ 2.851-287.0	Dust control cover for side broom
□ 6.987-469.0	Main brush, soft
□ 6.987-442.0	Main brush, hard
□ 6.987-443.0	Main brush, natural
□ 6.987-466.0	Side brush, soft
□ 6.987-468.0	Side brush, hard
□ 6.987-691.0	Flat pleated filter, white - 2 required to fill the filter compartment
□ 4.515-331.0	Wheel set, solid rubber
□ 8.638-962.0	Overhead guard, factory install
□ 8.638-963.0	Open cab, factory install
□ 8.638-964.0	Cab with windscreen, wiper and plastic cladding, factory install
□ 8.638-965.0	All-weather cab, regular, factory install
□ 2.852-800.7	All-weather cab with heating and air conditioning, factory install (special order)
□ 8.638-968.0	Left side broom, factory install
□ 8.640-208.0	KMI, Seat Belt Option
□ 8.638-969.0	Water spray dust control system, factory install
□ 2.851-287.0	Dust control cover
■ Included □ Optional	


Please contact us for more information:

Kärcher U.S.A.  
6398 N. Kärcher Way  
Aurora, CO 80019  
U.S.A.

Tel. 888-805-9852

 [www.karcher.com/us/professional](http://www.karcher.com/us/professional)

 KarcherUSA

 @kaercher\_us\_professional

 karchercommercial

 karcher-us

 KarcherUSA