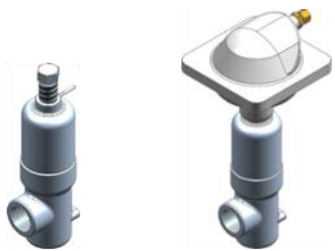


# Overflow valves up to 400 bar

UV-4-80-R-O, UV-4-80-R-O-PN

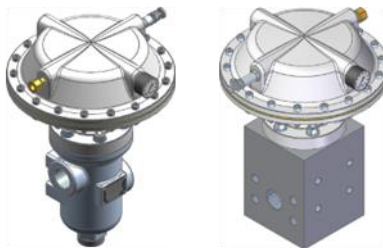
UV-PN-3/2 GGG, UV-PN-3/2 NIRO, UV-2/2-MA

Maintaining a constant pressure is one of the most important functions of hydraulic controls. WOMA overflow valves ensure constant working conditions at all connected hydraulic consumers and can be deployed as regulators or alternatively as 2/2-way or 3/2-way bypass valves. The pressure regulator is set either manually or pneumatically.



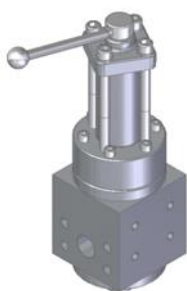
UV-4-80-R-O  
manual

UV-4-80-R-O-PN  
pneumatic



UV-PN-3/2 GGG  
pneumatic  
210/370 bar

UV-PN-3/2 NIRO  
pneumatic  
210/370 bar

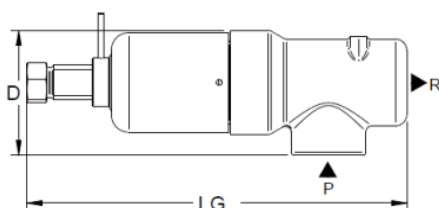


UV 2/2-MA  
manual  
400 bar

## Special features

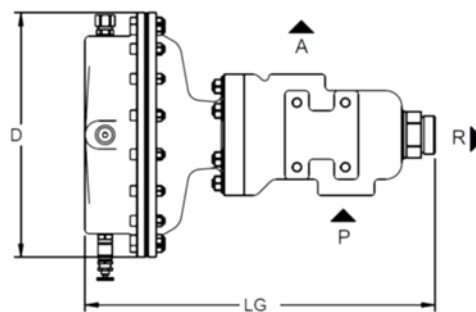
- Outstanding control properties
- Suitable for hot water operation up to 98 °C
- Long service life
- Air pressure monitoring with safety valve
- Can be retrofitted to many units
- Also available as preconfigured valve variant

Technical data – manual overflow valve		
Type	UV-4-80-R-O	UV-2/2-MA
Material number	9.871-023.0	9.871-360.0
Operating pressure max.	250 bar	400 bar
Nominal flow rate max.	476 l/min	720 l/min
Temperature of medium	+5 °C to +98 °C	
For pump type	150ARP to 250ARP 1003 to 2503	150ARP to 1000ARP 1003 to 2503
Weight approx.	8.7 kg	45.5 kg
LG	350 mm	560 mm
D	90 mm	152 mm
P	R1 1/2"	G1 1/4" or SAE 2"
A	-	G1 1/4" or SAE 2"
R	R1 1/2"	G 1 1/2"



UV-4-80-R-O: Valve dimensions and connections

Technical data – pneumatic					
Type	UV-4-80-R-O-PN	UV-PN-3/2 GGG		UV-PN-3/2 NIRO	
Material number	9.871-007.0	9.871-131.0	9.871-132.0	9.871-133.0	9.871-134.0
Operating pressure max.	250 bar	210 bar	370 bar	210 bar	370 bar
Nominal flow rate approx.	476 l/min	650 l/min		560 l/min	
Temperature of medium	+5 °C to +98 °C				
For pump type	150ARP to 250ARP 1003 to 2503	150ARP to 250ARP 1503 to 2503		150ARP to 1000ARP 1503 to 2503	
Weight approx.	14.6 kg	26 kg		43.6 kg	
LG	418 mm	434 mm		475 mm	
D	195 mm	Ø 303 mm			
P	R1 1/2"	G1 1/4"		G1 1/4" or SAE 2"	
A	-	G1 1/4"		G1 1/4" or SAE 2"	
R	R1 1/2"	G1 1/2"A			
Air pressure required	See diagrams				



Pneumatic overflow valve: Valve dimensions and connections

