

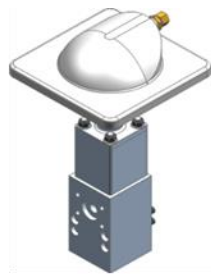
Overflow valves up to 750 bar

UV H-A-O, UV-H-A, 2/2-W-H-A-F-PN, 3/2-W-H-A-PN Regulator UV-H-A-PN

Maintaining a constant pressure is one of the most important functions of hydraulic controls. WOMA overflow valves ensure constant working conditions at all connected hydraulic consumers and can be deployed as regulators or alternatively as 2/2-way or 3/2-way bypass valves. The pressure regulator is set either manually or pneumatically.



UV-H-A
manual



UV-H-A-PN
pneumatic

Special features

- Outstanding control properties
- Suitable for hot water operation up to 98 °C
- Long service life
- Air pressure monitoring with safety valve
- Can be retrofitted to many units

Manually operated overflow valves		
Type	UV H-A-O	UV H-A
Material number	9.906-996.0	9.906-911.0
Operating pressure max.	750 bar	
Nominal flow rate max.	170 l/min	190 l/min
Temperature of medium	+ 5°C to + 98°C	
Weight approx.	20,5 kg	
LG	347 mm	
D approx.	102 mm	
P	on pump head WOMA 02 series; separate *	
A	-	see flange table
R	G1 1/4"	

* with flange 9.907-917.0 (weight 3.2 kg); see Figure 2

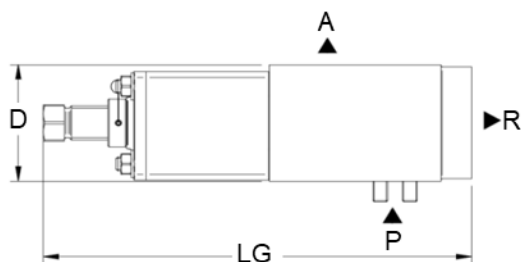


Figure 1: Valve dimensions and connections

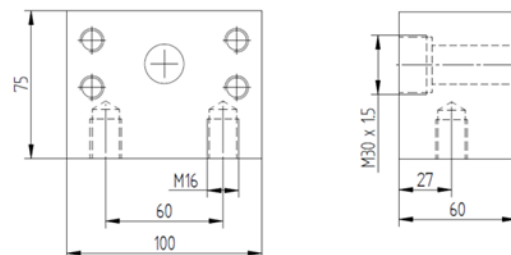


Figure 2: Flange dimensions and connections

pneumatically operated overflow valves						
Type	2/2-W-H-A-F-PN	3/2-W-H-A-PN	UV-H-A-PN			
Material number	9.906-914.0	9.906-915.0	9.871-011.0	9.871-072.0	9.906-912.0	9.871-073.0
Operating pressure max.	750 bar					
Nominal flow rate max.	170 l/min			229 l/min	170 l/min	229 l/min
Temperature of medium	+ 5°C to + 98°C					
Operating mode	2/2-way bypass	2/2-way bypass	3/2-way regulator		2/2-way regulator	
Weight approx.	28 kg					
LG	472 mm					
D approx.	261 mm					
P	on pump head WOMA 02 series; separate *					
A	-	See flange table				
R	G1 1/4"					
Air pressure required	see air pressure diagram					

* with flange 9.907-917.0 (weight 3.2 kg); see Figure 2

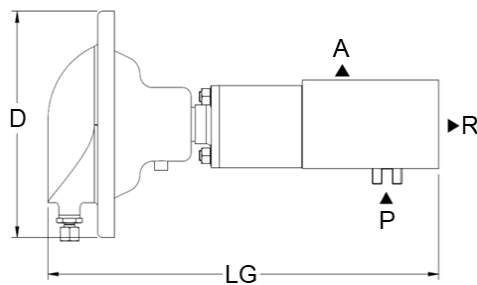
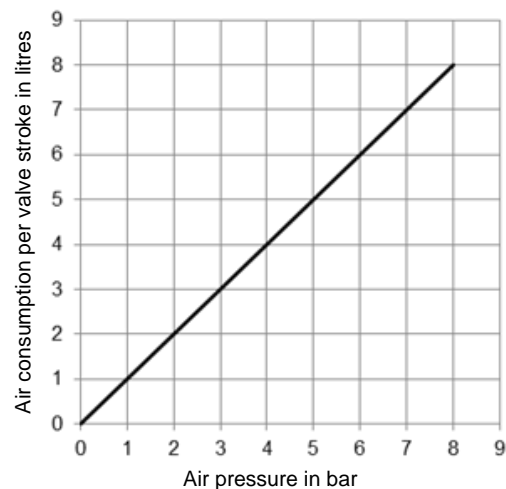
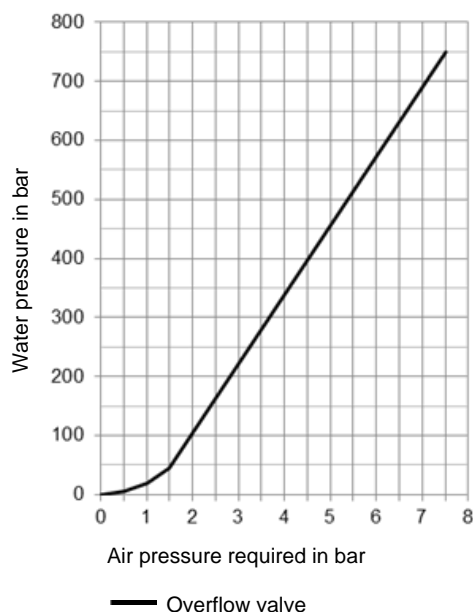


Figure 3: Valve dimensions and connections

Air pressure diagram



Flange table		
Material number	9.741-326.0 *	9.741-325.0 *
Type	with measuring connection	w/o measuring connection
Mounting	at the pressure outlet A of the overflow valve	
Weight	6,9 kg	
Pressure outlet A1 (material number)	a M22x1,5	(9.741-439.0)
Pressure outlet A2 (material number)	a M24x1,5	(9.741-447.0)
	G1/2"A	(9.741-445.0)
Pressure outlet A3 (material number)	a M30x1,5	(9.741-449.0)
	a M36x2	(9.741-453.0)
	G3/4"A	(9.741-452.0)

* w/o closure pieces (see pressure outlet)

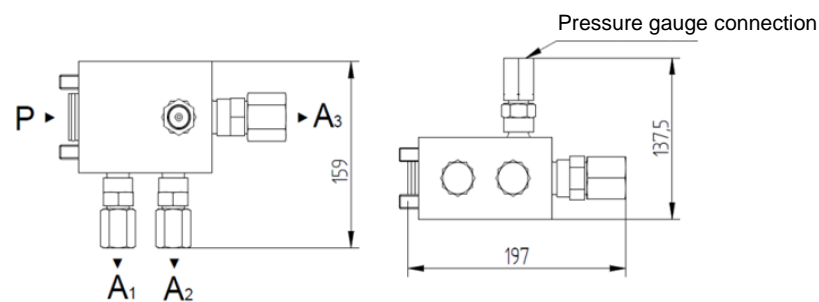


Figure 4: Flange dimensions and connections