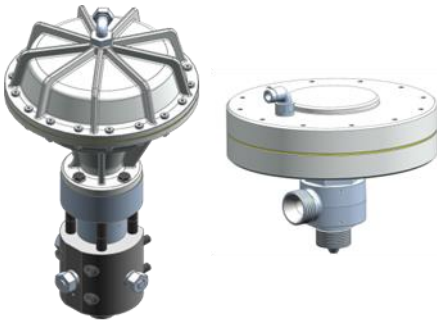


# Overflow valves up to 3,000 bar

## UV-PN-2/2-3000, BYV-PN-2/2-3000, BYV-PN-2/2-2500

Maintaining a constant pressure is one of the most important functions of hydraulic controls. WOMA overflow valves ensure constant working conditions at all connected hydraulic consumers and can be deployed as regulators or alternatively as 2/2-way bypass valves. The pressure regulator is set pneumatically.



UV-PN-2/2-3000

BYV-PN-2/2-3000

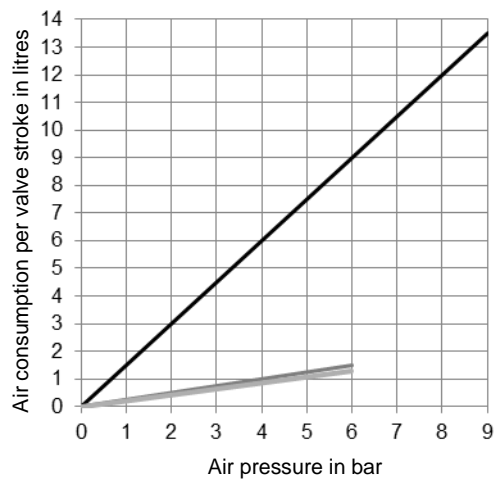
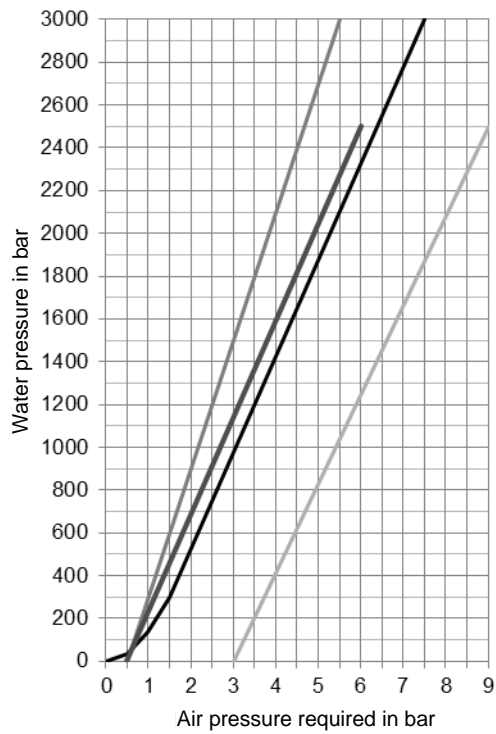
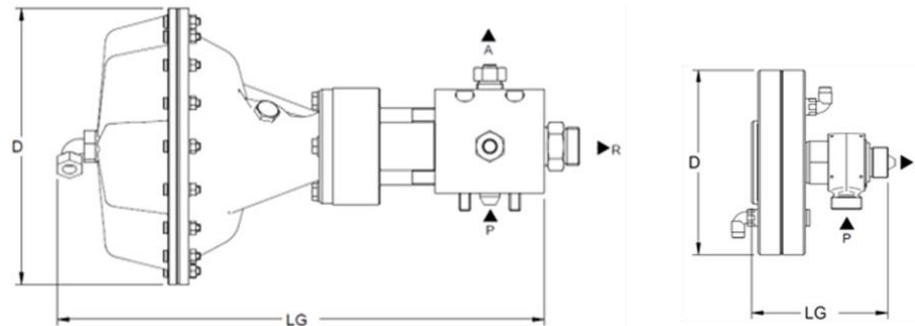
BYV-PN-2/2-2500

### Special features

- Outstanding control properties
- Long service life
- Housing and high-pressure parts in stainless steel
- Can be retrofitted to many units

Technical data								
Type	UV-PN-2/2-3000						BYV-PN-2/2-3000	BYV-PN-2/2-2500
Material number	9.871-135.0	9.871-305.0	9.893-686.0	9.871-118.0	9.871-391.0			
Operating pressure max.	3,000 bar	2,500 bar	3,000 bar	2,500 bar	3,000 bar	2,500 bar	3,000 bar	2,500 bar
Nominal flow rate max.	70 l/min		100 l/min		130 l/min		45 l/min	65 l/min
Temperature of medium	+5 °C to +98 °C							
For pump type	WOMA M series							
Operating mode	Over-flow	2/2-way bypass	Over-flow	2/2-way bypass	Over-flow	2/2-way bypass	2/2-way bypass	
Valve seat material	Stainless steel		Ceramic				Stainless steel	
Weight approx.	29 kg						4.5 kg	
LG	536 mm						148 mm	
D	303 mm						200 mm	
P	Separate assembly 1 1/8"-12 UNF						Assembly on pump head M33x1.5	
A	2x 1 1/8"-12 UNF						-	
R	G1 1/4"A						G1"A	
Air pressure required	See diagrams							

## Valve dimensions and connections



— UV-PN-2/2-3000 & UV as BYV up to 2,500 bar  
 — BYV-PN-2/2-3000  
 — BYV-PN-2/2-2500

— UV-PN-2/2-3000  
 — UV as BYV up to 2,500 bar  
 — BYV-PN-2/2-3000  
 — BYV-PN-2/2-2500