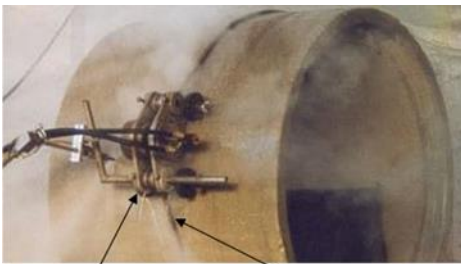


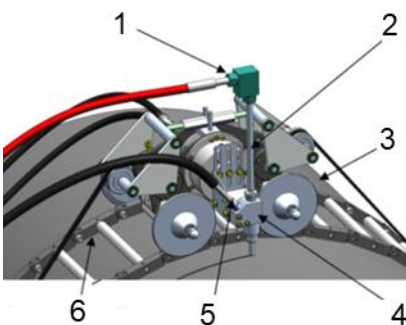
Cutting system

Eco Top Cutter 3000

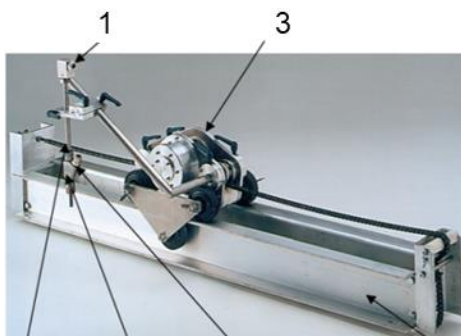
With the cutting system Eco Top Cutter 3000 round cuts (-R) as well as linear cuts (-L) can be done effortlessly. Depending on the type of material to be machined (e.g. concrete or steel) and the required cutting depth, the system is offered with two different speeds (Slow ..-L and Fast ..-S). A special system variant (..-P) is available for precision round cutting with a circular accuracy of approx. ± 0.5 mm with diameters of 800 to 1,400 mm.



1 cutting carriage
2 chain guide



Round cuts



Linear cuts

- 1 high-pressure hose connection
2 nozzle tube
3 cutting carriage
4 cutting head
5 connection abrasive material hose
6 chain guide
7 rail system

The cutting carriage with the attached cutting head is driven by an air motor and follows a guide chain in the case of round cutting and a guide rail in the case of linear cutting.

The water is fed to the cutting head under high pressure via the nozzle tube and produces a vacuum in the vortex chamber of the cutting head, which sucks the abrasive material and admixes the high-pressure water (injector principle).

Special benefits

- Composite materials or material combinations can also be separated in one cutting cut without causing any thermal or mechanical stresses at the cutting edges.
- Extensive accessories enable the application-specific expansion and adaptation of the cutting system to most diverse application requirements.

Technical data basic module		
Operating pressure	max.	3,000 bar
Air demand at full load		400 l/min at 6 bar
Nozzle type		Form 21 S
High-pressure hose connection		9/16-18 UNF-LH
Abrasive grain size	min.	0.4 mm
Abrasive grain size	max.	0.8 mm
Abrasive (25 kg)	material no.	6.025-309.0



Technical data abrasive container		
Material no.		9.871-764.0
Tare	approx.	38 kg

Technical data variant modules				
Variant	Slow (..L)	Fast (..S)	weight	Scope of delivery
Drive speed	min. 25 mm/min max. 100 mm/min	70 mm/min 220 mm/min		
Cutting depth (steel)	max. 80 mm	40 mm		
Cutting depth (concrete)	max. 1.000 mm	500 mm		
Linear cut up to 1,500 mm Material no.:	Eco Top Cutter 3000-LL 9.871-136.0	Eco Top Cutter 3000-LS 9.907-564.0	approx. 123 kg	<ul style="list-style-type: none"> ➤ Eco Top Cutter basic module ➤ Abrasive container ➤ Attachment kit (9.871-762.0) for cutting carriage ➤ Rail system (9.871-763.0) length 1.5 m
Round cut for diameters of 800 to 1,400 mm Material no.:	Eco Top Cutter 3000-RL 9.910-709.0	Eco Top Cutter 3000-RS 9.871-138.0	approx. 103 kg	<ul style="list-style-type: none"> ➤ Eco Top Cutter basic module ➤ Abrasive container ➤ Chain kit (9.885-609.0) ➤ Chain adjuster (9.871-765.0) ➤ Chain lock (9.883-614.0)
Precision round cut for diameters of 800 to 1,400 mm circular accuracy approx. ± 0.5 mm Material no.:	Eco Top Cutter 3000-RL-P 9.871-239.0	Eco Top Cutter 3000-RS-P 9.871-238.0	approx. 170 kg	<ul style="list-style-type: none"> ➤ Eco Top Cutter precision module ➤ Abrasive container ➤ Chain kit (9.885-609.0) ➤ Chain adjuster (9.871-765.0) ➤ Chain lock (9.883-614.0)

Accessories		
Material no.	Description	Note
9.872-461.0	guide chain (4.7 m length)	spare or extension part
9.887-259.0	compressed air lines (10 m length)	spare or extension part
6.025-249.0	compressed air lines (20 m length)	spare or extension part
6.025-250.0	compressed air lines (40 m length)	spare or extension part
9.877-436.0	cutting pipe (105 mm length)	wear part
9.897-688.0	cutting pipe (175 mm length)	wear part
6.025-309.0	abrasive grain size 0.4 – 0.8 mm (25 kg)	consumable
6.025-310.0	abrasive grain size 0.7 – 1.4 mm (25 kg)	consumable