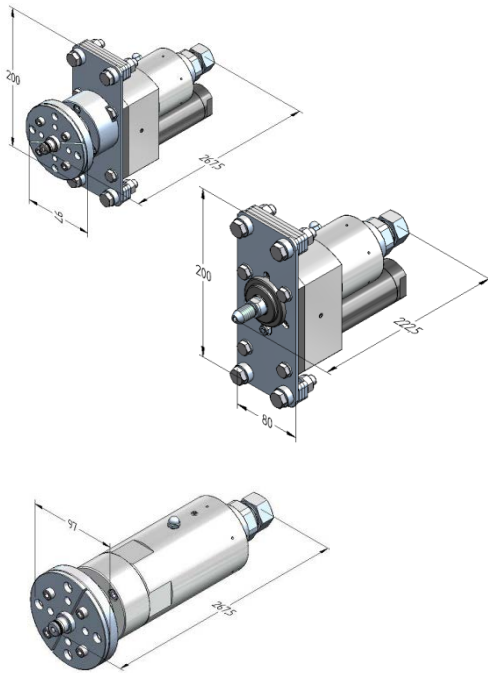


Multiport Swivel DDF 3000-45

The DDF 3000-45 is a pneumatically or self-driven multiport swivel and can be used in stationary and mobile applications. The combination of DDF 3000-45 and nozzle arm / nozzle bar results in a high-performance water jet tool, which due to its variable rotational speed, is an efficient tool for surface treatment and surface cleaning.



Special advantages

- Speed adjustable
- Pressure-bearing parts made of high-strength stainless steel
- Robust design
- Adjustable distance to the surface in 4 steps

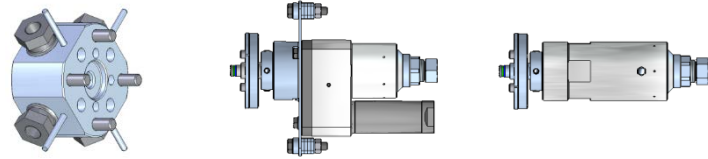
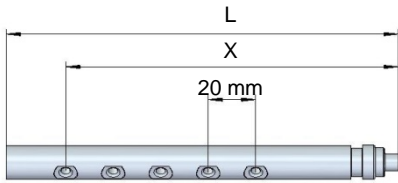
Variants

The DDF 3000-45 is available with a pneumatic drive or in a self-propelled version.

Technical specifications

Technical specifications			
Type	Pneumatic	Pneumatic	Self-propelled
Connection	Flange	Thread	Flange
Material-Number	9.895-534.0	9.895-566.0	9.872-982.0
Medium temperature	max. 60 °C		
Operating pressure	max. 3,000 bar		
Flow rate	max. 45 l/min		
Rotation speed	max. 2,500 min ⁻¹		
Weight	approx. 9.5 kg	approx. 9.5 kg	approx. 6 kg
Input pressure pneumatic motor	max. 6.5 bar		-
Rotation direction	Right	Right	Right / Left
Length	approx. 200 mm	approx. 200 mm	approx. 97 mm
Width	approx. 97 mm	approx. 80 mm	approx. 97 mm
Height	approx. 268 mm	approx. 223 mm	approx. 268 mm
High pressure connection	9/16"-18-UNF-LH		

Accessories for the variant with flange connection



Standard nozzle arms				
Material-Number	Number of nozzles Form 21	Distance X [mm]	Length L [mm]	Working Width [mm]
9.917-640.0	Connection flange			
9.917-971.0	1	65	82	160
9.917-972.0	2	85	102	200
9.917-973.0	3	105	122	240
9.917-974.0	4	125	142	280
9.917-975.0	5	145	162	320
9.917-976.0	6	165	182	360
9.917-644.0	Plug	-	60	-
9.917-968.0	Nozzle holder I			
9.917-969.0	Nozzle holder II			
9.883-217.0	Ball			
9.881-012.0	Threaded pin			

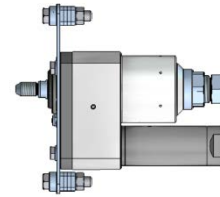
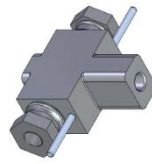
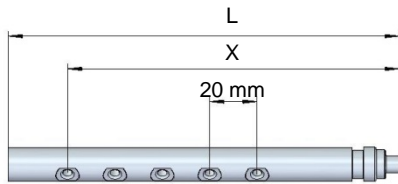
Order example

Pneumatic multiport swivel with 4 nozzle arms and 240 mm working width

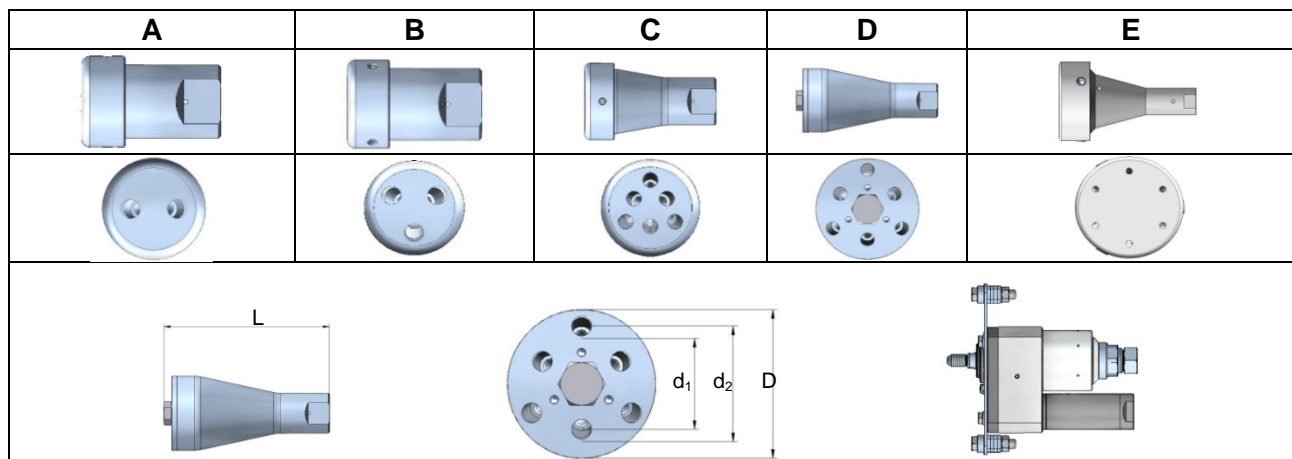
1. 9.895-534.0 DDF 3000-45
2. 9.917-640.0 Connection flange
3. 4 x 9.917-972.0 Nozzle arm 240 mm
4. 4 x 9.917-968.0 Nozzle holder I
5. 8 x 9.917-969.0 Nozzle holder II
6. 4 x 9.883-217.0 Ball
7. 4 x 9.881-012.0 Threaded pin

Extra robust nozzle arms				
Material-Number	Number of nozzles Form 21	Distance X [mm]	Length L [mm]	Working width [mm]
9.917-641.0	Connection flange			
9.875-958.0	2	82	100	194
9.875-959.0	2	92	100	214
9.875-992.0	2 (20° to the inside)	89.5	100	200
9.875-993.0	2 (20° to the inside)	85	100	200
9.876-810.0	5	160	178	350
9.876-811.0	5	170	178	370
9.878-406.0	Plug	-	80	-

Accessories for the variant with thread connection



Nozzle arms				
Material-Number	Number of nozzles Form 21	Distance X [mm]	Length L [mm]	Working width [mm]
9.917-643.0	Connection flange			
9.917-971.0	1	65	82	160
9.917-972.0	2	85	102	200
9.917-973.0	3	105	122	240
9.917-974.0	4	125	142	280
9.917-975.0	5	145	162	320
9.917-976.0	6	165	182	360
9.917-644.0	Plug	-	60	-
9.917-968.0	Nozzle holder I			
9.917-969.0	Nozzle holder II			
9.883-217.0	Ball			
9.881-012.0	Threaded pin			



Nozzle carrier heads								
Material-Number	Form	Number nozzles Form 21	circle d ₁ [mm]	circle d ₂ [mm]	Spray angle of the nozzles		L [mm]	D [mm]
					d ₁	d ₂		
9.886-774.0	A	2	17	-	20°	-	64	42
9.886-775.0	B	3	20	-	30°	-	64	42
9.886-772.0	C	3 + 3	20	30	20°	24°	89	52
9.886-773.0	D	3 + 3	35	45	20°	24°	132.5	59
9.886-645.0	E	3 + 3	40	42	30°	30°	114	65