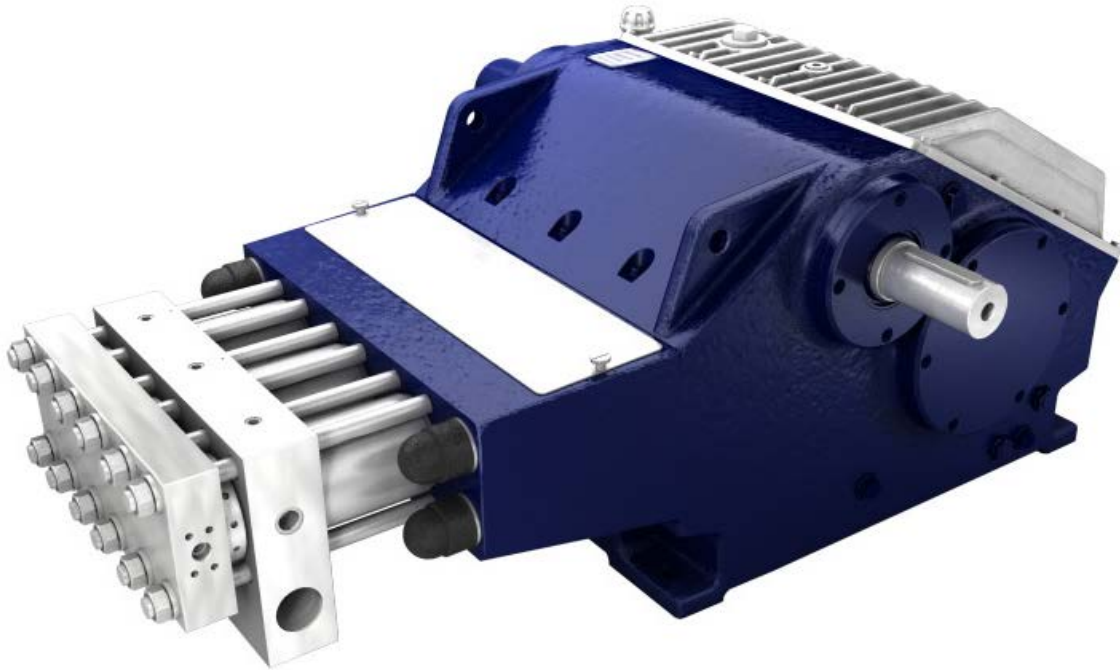


High-pressure pump 550M

The type 550M high-pressure pump provides a max. operating pressure of 3,000 bar and a max. flow rate of 105 l/min.



The high-pressure plunger pumps of the M-series provide working pressures of up to 3,000 bar. This makes the pumps of the M-series ideal for work such as cutting, fragmenting, stripping and de-rusting.

Built in central valve design, these plunger pumps have high volumetric efficiencies even at high pressures. The hard metal plungers used are extremely stable and ensure a long service life and therefore low maintenance costs. Furthermore, they are insensitive to temperature shocks. The guide of the plunger as well as the sealing water system ensures a long service life of the sealing system and counteracts the intrusion of air.

On request, the availability of an ATEX version can be checked.

Technical data		
Weight	approx.	1,390 kg
Inlet pressure connection		IG 2"
Pressure connection with flange		9/16" UNF-LH
Cooling water connection		IG 1/2"
Crankshaft	max. min.	455 1/min Depends on operation parameters
Drive shaft		Diameter 70mm k6, feather key DIN 6885 Sheet 1, A20 x 12 x 100
Torque at drive shaft	max.	2,558 Nm
Moment of inertia J	i = 3.30	0.491 kgm ²
	i = 3.96	0.411 kgm ²
	i = 4.60	0.327 kgm ²
Centrifugal moment GD ²	i = 3.30	19.26 Nm ²
	i = 3.96	16.14 Nm ²
	i = 4.60	12.80 Nm ²
Inlet pressure	min. max.	1.5 bar 5.0 bar
Pressure amplitude	max.	± 2.0 bar
Flow temperature	min. max.	+5 °C +30 °C (higher temperatures on request)
Flow inlet requirement	min.	1.5x nominal feed rate of the pump, dependent on the conversion set
Emission sound pressure level according to DIN EN ISO 11200		>80 dB(A)
Oil capacity of transmission end	approx.	45 l
Oil viscosity ISO VG under DIN 51517-2 or -3		320 mm ² /s
Oil pressure lubrication		2.5 - 5.0 bar
Oil pressure set value overflow valve		5.0 bar
Oil filter fineness		0.025 mm
Oil temperature	max. Set value	80 °C 60 - 70 °C
Heat exchanger cooling water requirement	appr.	10 - 20 l/min
Heat exchanger cooling water temperature	min. max.	+5 °C +45 °C
Heat exchanger cooling water pressure	min. max.	1.5 bar 10 bar

Performance variants**										
Pinion shaft		Crank shaft	P22		P24		P26		P28	
1,500 [1/min]	1,800 [1/min]		3,000 bar*		2,500 bar		2,500 bar		2,000 bar	
Gear ratio		[1/min]	[kW]	[l/min]	[kW]	[l/min]	[kW]	[l/min]	[kW]	[l/min]
3.30	3.96	455*	336	61	343	75	402*	88	384	105*
	4.60	391	289	53	295	65	346	76	331	91
3.96		379	280	51	286	63	335	73	320	88
4.60		326	241	44	246	54	288	63	275	75

* Maximum values of the pump

** Technical changes reserved

Overview pump 550M

