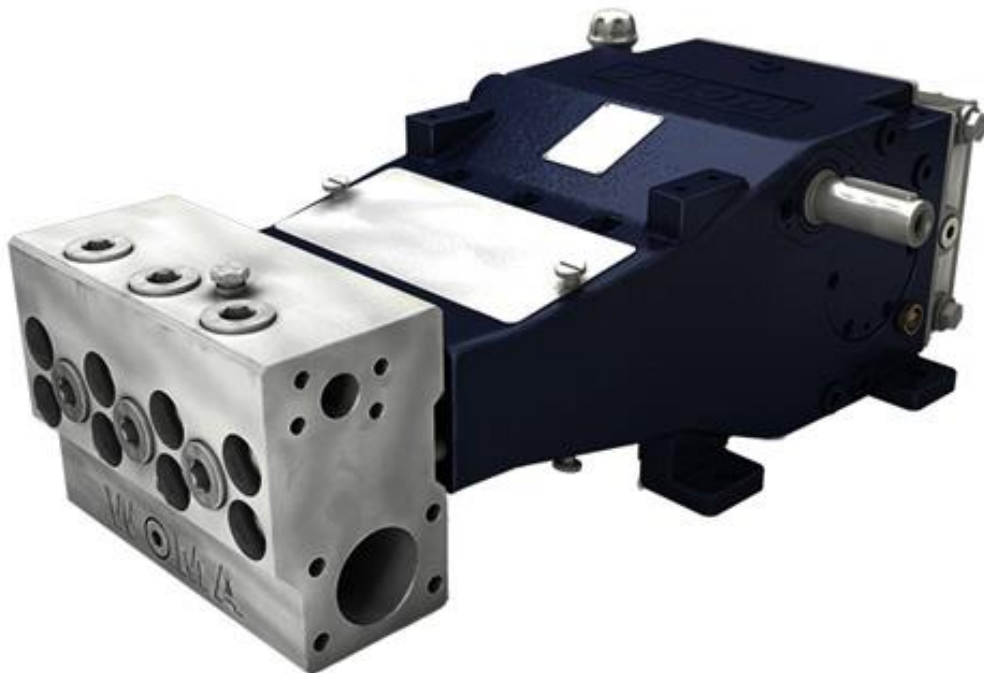


# High-pressure pump 1003

The type 1003 high-pressure pump provides a max. operating pressure of 150 bar and a max. flow rate of 257 l/min.



Operating pressures up to 250 bar and nominal flow rates of up to 403 l/min make the high pressure pumps of the 03-series a specialist for descaling as well as for sewer and pipe cleaning.

The sealing system of this plunger pump is particularly service-friendly due to fewer wearing parts and easy maintenance. The ceramic plungers used are extremely resistant to acidic and basic fluids. Alternatively, the pump is available with coated steel plungers that offer increased wear resistance and resistance to thermal shocks. These features, together with the favorable price-performance ratio, make the pumps of the 03-series a good choice.

Technical data		
Weight	approx.	255 kg
Inlet pressure connection		IG 3"
Pressure connection		IG 1 1/4"
Cooling water connection		IG 1"
Crankshaft	max. min.	500 1/min Depends on operation parameters
Drive shaft		Diameter 40mm k6, feather key DIN 6885 Sheet 1, A12 x 8 x 70
Torque at drive shaft	max.	375 Nm
Moment of inertia J	i = 3.00	0.015 kgm <sup>2</sup>
	i = 3.63	0.011 kgm <sup>2</sup>
Centrifugal moment GD <sup>2</sup>	i = 3.00	0.59 Nm <sup>2</sup>
	i = 3.63	0.43 Nm <sup>2</sup>
Inlet pressure	min. max.	1.5 bar 5.0 bar
Pressure amplitude	max.	± 2.0 bar
Flow temperature	min. max.	+5 °C +45 °C (higher temperatures on request)
Flow inlet requirement	min.	1.5x nominal feed rate of the pump, dependent on the conversion set
Emission sound pressure level according to DIN EN ISO 11200		>80 dB(A)
Oil capacity of transmission end	approx.	6 l
Oil viscosity ISO VG under DIN 51517-2 or -3		320 mm <sup>2</sup> /s
Oil pressure lubrication		2.5 - 5.0 bar (optional / performance related)
Oil pressure set value overflow valve		5.0 bar (optional / performance related)
Oil filter fineness		0.025 mm (optional / performance related)
Oil temperature	max. Set value	80 °C 60 - 70 °C
Heat exchanger cooling water requirement	approx.	5 - 10 l/min
Heat exchanger cooling water temperature	min. max.	+5 °C +45 °C
Heat exchanger cooling water pressure	min. max.	1.5 bar 10 bar

Performance variants**						
Pinion shaft		Crank shaft	P50		P55	
1,500 [1/min]	1,800 [1/min]		150 bar*		125 bar	
Gear ratio		[1/min]	[kW]	[l/min]	[kW]	[l/min]
3.00		500*	59	211	60*	257*
	3.63	496	59	210	59	254
3.63		413	49	175	49	212

\* Maximum values of the pump

\*\* Technical changes reserved

