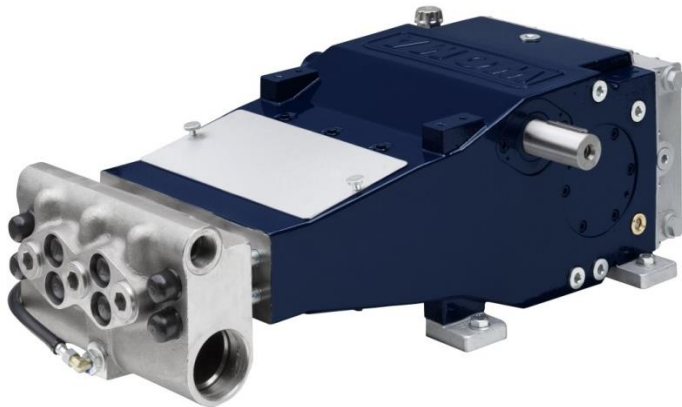
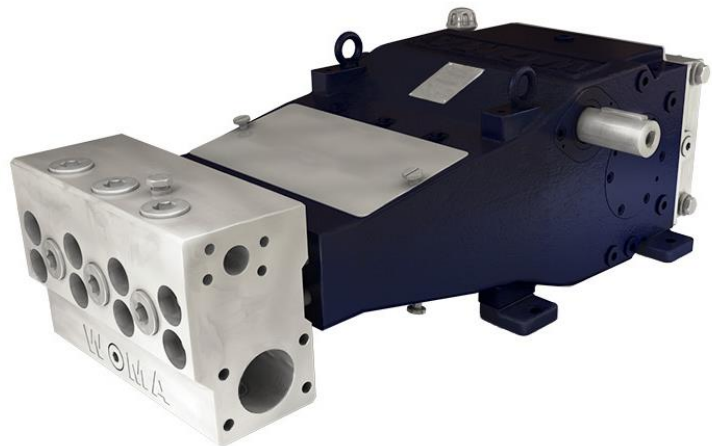


High-pressure pump 1503

The type 1503 high-pressure pump provides a max. operating pressure of 200 bar and a max. flow rate of 402 l/min.



Cast iron pump head



Stainless steel pump head

Operating pressures up to 250 bar and nominal flow rates of up to 403 l/min make the high pressure pumps of the 03-series a specialist for descaling as well as for sewer and pipe cleaning.

In addition to the corrosion-resistant stainless steel variant, WOMA offers a cost-effective variant of gray cast iron.

The sealing system of this plunger pump is particularly service-friendly due to fewer wearing parts and easy maintenance. The ceramic plungers used are extremely resistant to acidic and basic fluids. Alternatively, the pump is available with coated steel plungers that offer increased wear resistance and resistance to thermal shocks. These features, together with the favorable price-performance ratio, make the pumps of the 03-series a good choice.

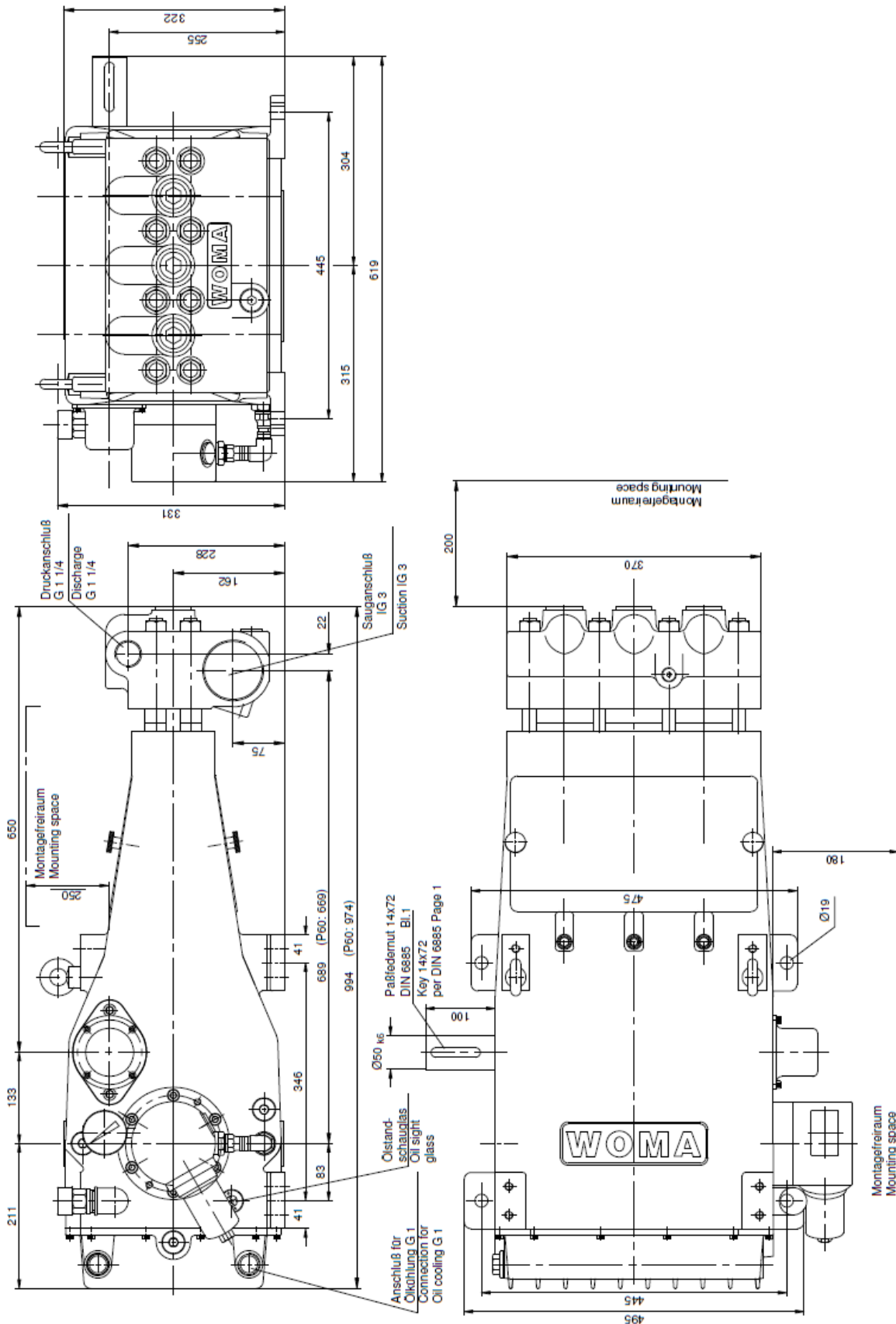
Technical data		
Pump head		Cast iron / Stainless steel
Weight	approx.	285 kg / 340 kg
Inlet pressure connection		IG 3" / SAE 3" 3,000 psi
Pressure connection		IG 1 1/4" / SAE 1 1/4" 6,000 psi
Cooling water connection		IG 1"
Crankshaft	max. min.	507 1/min Depends on operation parameters
Drive shaft		Diameter 50mm k6, feather key DIN 6885 Sheet 1, A14 x 9 x 72
Torque at drive shaft	max.	676 Nm
Moment of inertia J	i = 2.96 i = 3.69 i = 4.57	0.042 kgm ² 0.030 kgm ² 0.022 kgm ²
Centrifugal moment GD ²	i = 2.96 i = 3.69 i = 4.57	1.66 Nm ² 1.17 Nm ² 0.86 Nm ²
Inlet pressure	min. max.	1.5 bar 5.0 bar
Pressure amplitude	max.	± 2.0 bar
Flow temperature	min. max.	+5 °C +45 °C (higher temperatures on request)
Flow inlet requirement	min.	1.5x nominal feed rate of the pump, dependent on the conversion set
Emission sound pressure level according to DIN EN ISO 11200		>80 dB(A)
Oil capacity of transmission end	approx.	9 l
Oil viscosity ISO VG under DIN 51517-2 or -3		320 mm ² /s
Oil pressure lubrication		2.5 - 5.0 bar (optional / performance related)
Oil pressure set value overflow valve		5.0 bar (optional / performance related)
Oil filter fineness		0.025 mm (optional / performance related)
Oil temperature	max. Set value	80 °C 60 - 70 °C
Heat exchanger cooling water requirement	approx.	5 - 10 l/min
Heat exchanger cooling water temperature	min. max.	+5 °C +45 °C
Heat exchanger cooling water pressure	min. max.	1.5 bar 10 bar

Performance variants**								
Pinion shaft		Crank shaft	P50		P55		P60	
1,500 [1/min]	1,800 [1/min]		200 bar*		170 bar		140 bar	
Gear ratio		[1/min]	[kW]	[l/min]	[kW]	[l/min]	[kW]	[l/min]
2.96		507*	103	277	107*	337	105	402*
	3.69	488	100	267	103	324	101	387
3.69		407	83	222	86	270	84	323
	4.57	394	80	216	83	262	82	312
4.57		328	67	180	69	218	68	260

* Maximum values of the pump

** Technical changes reserved

Overview pump 1503 for cast iron pump head



Overview pump 1503 for *stainless steel pump head*

