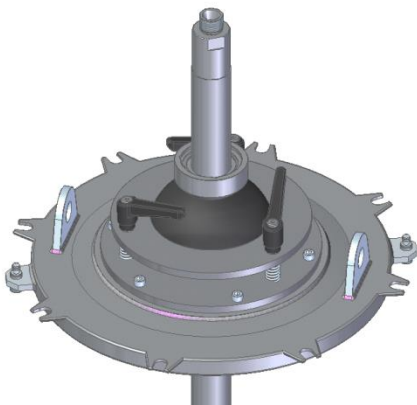


# Positioning device

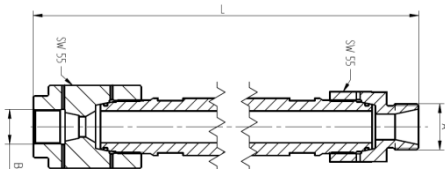
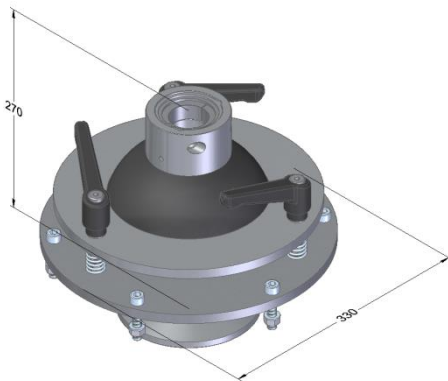
## Ball joint

The ball joint can be used to position an internal tank cleaning system in the vessel quickly and easily. Four different stabilising pipes, between 500 and 3000 mm, are available for adapting to the dimensions of the tank. The ball joint can also be used in a horizontal position by means of these stabilising pipes. Alternatively, the ball joint can also be used with a hose lance. It is therefore the ideal addition to the WOMA TankMaster series.



### Special advantages

- Flexible positioning of the cleaning device in the vessel
- No leakage of waste or spray water from the mounting opening (not gas-tight)
- Can be easily installed on all standard tank openings
- Robust design for operation in rigorous conditions on construction sites
- Can be installed by one person without using lifting gear
- Lifting gear connections available on request (2x M8 eye bolts, material number 9.898-200.0)
- Can be used universally thanks to its small dimensions and low weight



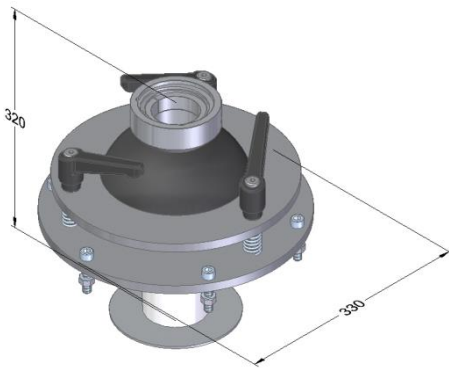
Technical data Stabilising pipe variant	
Material number	9.916-378.0
Operating pressure	max. 1,500 bar
Swivel range vertical	90°
Swivel range horizontal	360°
Weight	approx. 19 kg
Diameter	approx. 330 mm
Height	approx. 270 mm

Stabilising pipes* (for use with 9.916-378.0)	
Total length L [mm]	Material number
500	9.918-743.0
1000	9.918-744.0
2000	9.919-272.0
3000	9.919-273.0

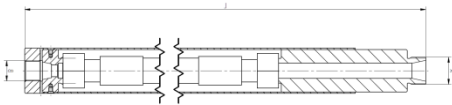
\*2 O-rings 9.882-476.0 must be ordered separately for each stabilising pipe. A hose connection adapter and a TankMaster connection adapter are required to use the stabilising pipes.



<b>Connection adapter</b>	
Hose connection M24 x 1.5	9.918-932.0
Hose connection M36 x 2	9.918-934.0
Connection for TankMaster S & SL	9.878-519.0
Connection for TankMaster L	9.918-749.0



<b>Technical data Hose lance variant</b>	
Material number	9.918-758.0
Operating pressure	max. 1,500 bar
Swivel range vertical	90°
Swivel range horizontal	360°
Weight	approx. 19 kg
Diameter	approx. 330 mm
Height	approx. 320 mm
Suitable water tool	TM 1500 S/SL

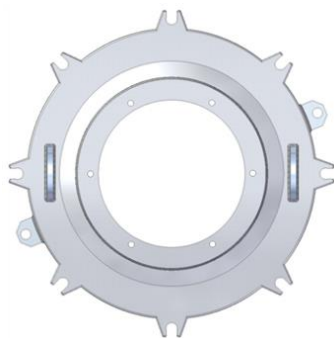


<b>Hose lance*</b> (for use with 9.918-758.0)		
<b>Length L** [mm]</b>	<b>Hose connection</b>	<b>Material number</b>
3500	M24 x 1.5	9.918-821.0

\*max. Volume flow 120 l/min

\*\*different lengths available on request

<b>Accessories</b>	
<b>Description</b>	<b>Material number</b>
TankMaster S 1500	9.899-844.0
TankMaster SL 1500	9.899-845.0
TankMaster L 1500	9.917-766.0



<b>Connecting plates</b>	
<b>Description</b>	<b>Material number</b>
Cover DN 500	9.917-846.0
Cover DN 500 with inductive sensors	9.919-094.0
Cover DN 600	9.917-849.0
Cover DN 700	9.917-847.0
Manhole plate Ø 710 mm (with inspection windows)	9.917-661.0
Manhole plate Ø 440 mm (with inspection openings)	9.917-636.0

\* customised connecting plates are available on request

## Overview

