

# High Pressure Gun

## HP-E 24V / HP-E EX

The HP-E are high-pressure guns without a mechanical valve for a maximum permissible operating pressure of 3,000 bar. In addition to the pressure housing, the HP-E also features an electrical switching contact. By means of this electrical switching contact, the high-pressure operation of the corresponding high-pressure unit is switched on and off, as a result of which working comfort and safety at work are increased.

The high-pressure gun is characterized by an ergonomically designed handle grip and a low weight. By default, each high-pressure gun is equipped with a hand guard and trigger lock. The handle grip is made of fiber-reinforced plastic and the pressure housing is made of forged steel.



HP-E 24V  
HP-E EX

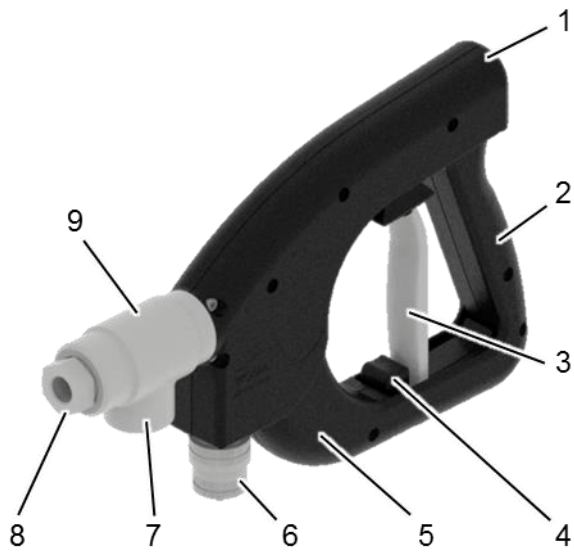
### Special benefits

- Ergonomic design
- Low operating force
- High safety standard
- Rotatable handle for easy operation
- Handle made of impact resistant, largely chemically resistant fiber-reinforced plastic

Technical Data		
Control type		Electric
Operating pressure	max.	3,000 bar
Flow rate	max.	65 l/min
Medium temperature	max.	95 °C
Length	approx.	310 mm
Height	approx.	200 mm
Width	approx.	44 mm
Weight	approx.	2,0 kg
High pressure connection (P)		1 1/8"-12 UNF
High pressure connection (A)		9/16"-18 UNF-LH

Variants		
Type	HP-E 24V	HP-E EX
Material no.	9.918-184.0	9.918-185.0
Control voltage	24 V	8.2 V (Namur)

## Overview



*HP-E 24V / HP-E EX*

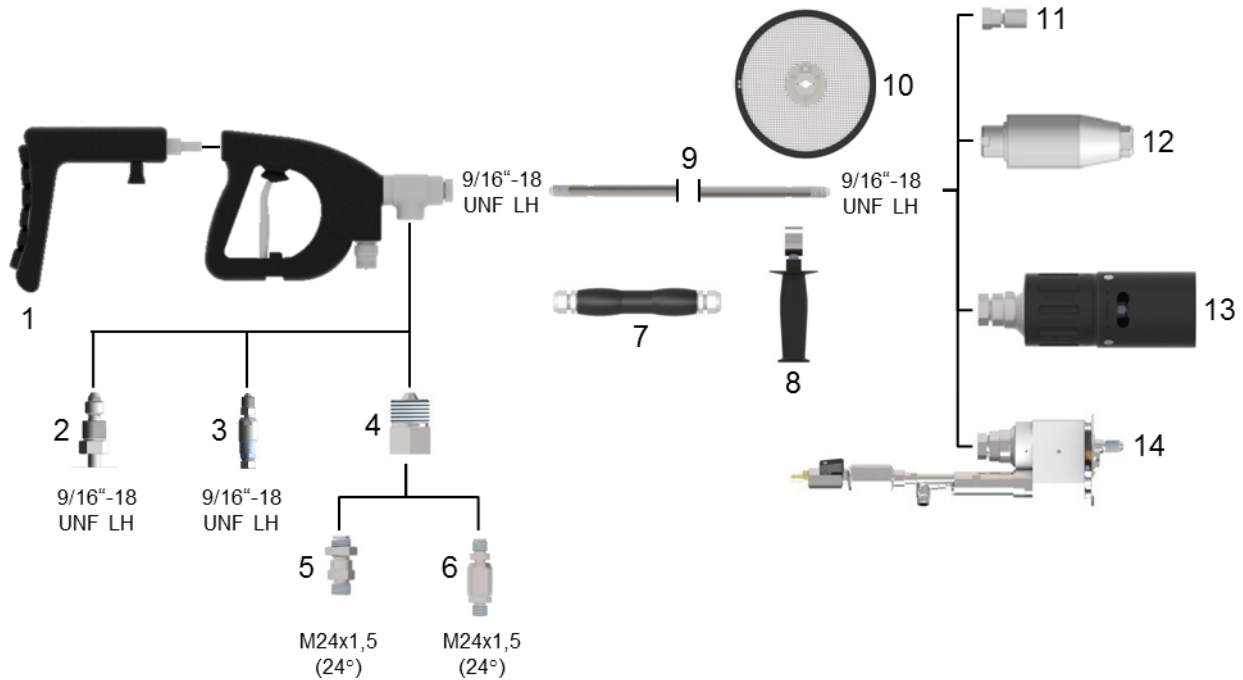
Legend			
1	Attachment thread for body support	6	Electrical connection
2	Handle grip	7	High pressure connection (P)
3	Trigger	8	High pressure connection (A)
4	Trigger lock	9	Pressure housing
5	Hand guard		

## Connection

*HP-E 24V  
HP-E EX*

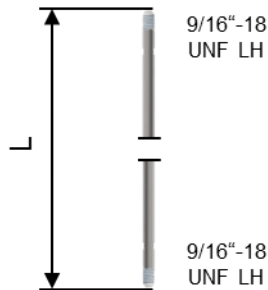


## Accessories



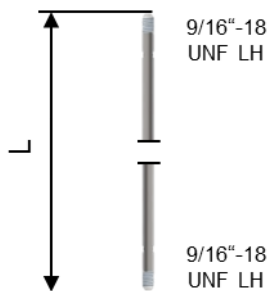
### Sample configuration

	Description	Material no.
1	Body support	9.918-752.0
2	Hose connector 3,000 bar	9.872-023.0
3	Rotatable hose connector 3,000 bar	9.872-640.0
4	Adapter 1,500 bar	9.918-624.0
5	Hose connector 1,500 bar	9.871-969.0
6	Rotatable hose connector 1,500 bar	9.872-437.0
7	Handle grip	6.025-300.0
8	Handle grip	9.871-675.0
9	Lance tube 1,500 bar	see table 1
	Lance tube 3,000 bar	see table 2
10	Splash guard	9.871-040.0
11	Nozzle carrier	see table 3
12	Orbimaster	see WOMA product catalogue
13	Turbo-Nozzle	
14	Speedy	



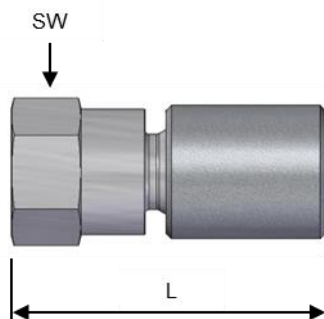
**Lance tubes,  
max. operating pressure 1,500 bar – Table 1**

L [mm]	Weight [kg]	Material no.
500	0.43	9.891-182.0
750	0.64	9.891-183.0
1,000	0.85	9.891-184.0
1,500	1.30	9.891-207.0
2,000	1.69	9.891-185.0
3,000	2.53	9.891-186.0
4,000	3.37	9.891-187.0
5,000	4.21	9.891-188.0
6,000	5.05	9.891-189.0
7,000	5.89	9.891-383.0



**Lance tubes,  
max. operating pressure 3,000 bar – Table 2**

L [mm]	Weight [kg]	Material no.
500	0.55	9.891-226.0
800	0.87	9.891-227.0
1,000	1.09	9.891-228.0
1,500	1.64	9.891-229.0
2,000	2.17	9.891-230.0
3,000	3.24	9.891-231.0
4,000	4.32	9.891-232.0
5,000	5.40	9.892-859.0
6,000	6.47	9.892-860.0



**Nozzle carrier – Table 3**

Nozzle form**	p <sub>max</sub> [bar]	L [mm]	SW	Material no.
4 / 19	1,500	59	24	9.872-008.0
1 / 8	3,000	60	22	9.873-090.0
21	3,000	50	27	9.878-291.0
Nozzle carrier with coherent beam formation				
4*	1,500	76	24	9.872-183.0

\* Material no. for spare nozzle extension with flow insert: 9.884-038.0

\*\* Form 1 / 4 / 21 = point jet nozzles;

Form 8 / 19 = flat jet nozzles