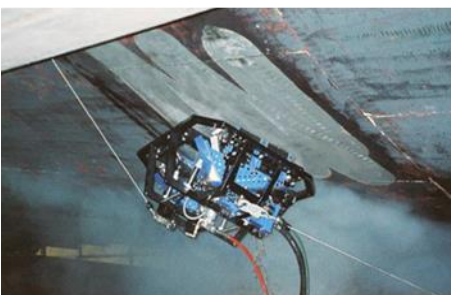
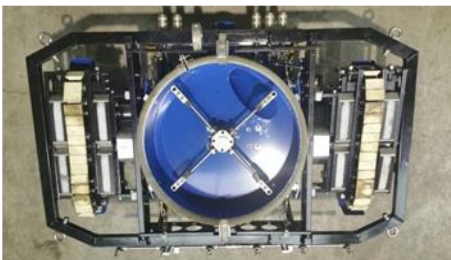


Magnet Lizard

The primary field of use for the Magnet Lizard is on vertical metal walls—such as ship's hulls and large tanks/silos. The WOMA multiport swivel is installed as a cleaning tool and rated at 45 l/min (max.) at 3,000 bar. Despite the force exerted by these jets, the Magnet Lizard does not need a vacuum system to maintain its secure grip on the steel wall. Eight high-performance magnets keep the Magnet Lizard in place. The distance of these magnets to the surface can be adjusted to suit the application scenario—and even overhead work is easily possible. Thanks to the brushes and contact bars on the cleaning unit, as well as the option of deactivating the unit's pneumatic contact pressure, the Magnet Lizard is extremely tolerant of obstacles and unevenness. The drive unit uses two chains driven by compressed-air motors, which make the Magnet Lizard extremely manoeuvrable. Since the Lizard is entirely pneumatically driven, no electrical cabling is necessary. The system is extremely light and flat, and enclosed by a rugged protective frame. A comprehensive range of accessories includes a pneumatic fall arrest system that offers jolt-free fall protection while also making it easier to position the Magnet Lizard where needed.

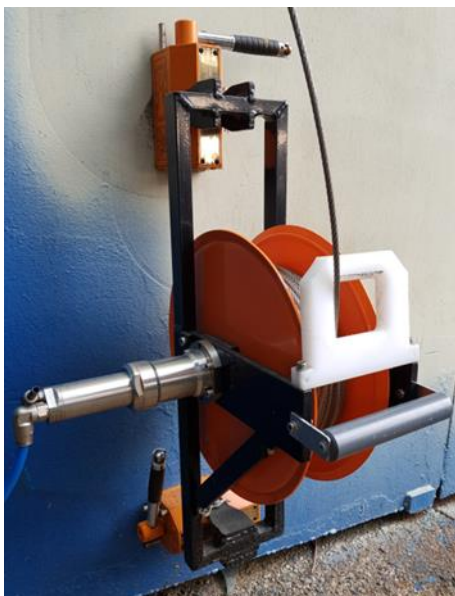


Special features

- Pneumatic control unit
- Secure grip, even in moderate winds
- Vertical wall work without scaffolding
- Simple speed of travel setting
- Very light and so highly manoeuvrable and very tolerant of obstacles and unevenness
- Comprehensive set of accessories for various task areas and working conditions

Variants				
Material number	9.919-120.0	9.740-496.0	9.919-119.0	9.740-497.0
Control voltage	24 V	8.2 V (Namur)	24 V	8.2 V (Namur)
Speed of travel	0–4 m/min		2–8 m/min	
Operating pressure (p) max.	3,000 bar			
Volume flow rate (Q) max.	45 l/min			
Medium temperature max.	60 °C			
Speed (tool) max.	2,500 rpm			
Working width	370 mm			
Compatible nozzles (accessories)	Model 21S, model 21LL			
No. of nozzles max.	20			
Weight approx.	56 kg			
Length	650 mm			
Width	1,000 mm			
Height	415 mm			
Suction hose port	Ø 3"			
High-pressure hose connection	9/16"-18 UNF-LH			
Required air pressure min.	6 bar			
Air required at 6 bar* approx.	1 m ³ /min			
Air quality	Dry, filtered to 5 µm, non-lubricated air or only slightly lubricated air (approx. 1 droplet/minute)			
Pneumatic line length	25 m			
Sound pressure level	92.7 dB(A)			
IP rating	IP 65			

* The compressor used should offer reserve capacity of at least 50%, depending on hose length.



Pneumatic fall arrest system

Equipment variants and accessories

Fall protection	
Designation	Material number
Pneumatic fall arrest system 60 m*	9.919-499.0
Fall protection device with 24 m internal fall arrester	9.919-127.0

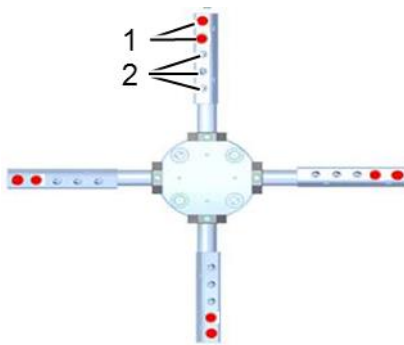
* Consists of two fall arrest systems with pneumatic motor, magnets and idler rollers

Suction system	
Designation	Material number
VacuTecMaster	9.740-045.0

Nozzles	
Designation	Material number
Model 21S	See WOMA nozzle product literature
Model 21LL	

A total of 5 nozzles can be used on each nozzle arm. Open nozzle sockets are closed off with dummy nozzles if the application requires less than 20 nozzles. Nozzle selection depends on the flow rate and the operating pressure that is configured for the high-pressure water jet unit.

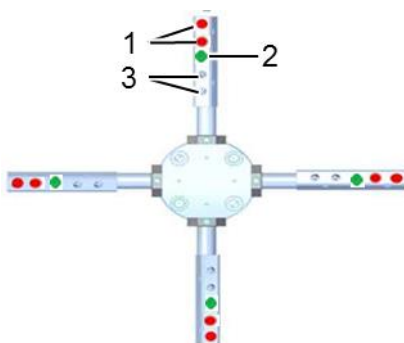
Examples of nozzle selections for various units



- 1 Model 21S (Ø 0.35)
- 2 Dummy nozzle

Nozzle selection* for EcoMaster MK3 p = 2500 bar Q = 22.1 l/min		
Ø 0.35 mm, model 21S	8x	9.886-208.0
Dummy	12x	6.025-237.0

* Other combinations on request



- 1 Model 21S (Ø 0.40)
- 2 Model 21S (Ø 0.35)
- 3 Dummy nozzle

Nozzle selection* for EcoMaster D 400M p = 2500 bar Q = 39.93 l/min		
Ø 0.40 mm, model 21S	8x	9.886-209.0
Ø 0.35 mm, model 21S	4x	9.886-208.0
Dummy	8x	6.025-237.0

* Other combinations on request