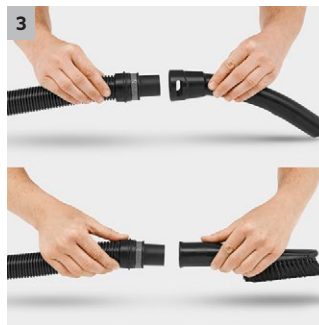




WD 4 Premium

WD 4 Premium multi-purpose vacuum cleaner. Super-powerful and energy-efficient. With a sturdy 20-litre stainless steel container, flat pleated filter and parking position for working interruptions.



1 Patented filter removal technology

- Quick and easy removal of the filter from the filter box - without contact with dirt.
- For wet and dry vacuuming without filter replacement.

2 Newly developed: floor nozzle and suction hose

- For the best cleaning results - whether dry, wet, fine or coarse dirt.
- For maximum vacuuming convenience and flexibility.

3 Removable handle

- Different nozzles can be directly attached to the suction hose.
- For easy vacuuming - even in confined spaces.

4 Practical parking position

- Quick and easy intermediate parking of suction tube and floor nozzle during working interruptions.



WD 4 Premium

- Removable filter box with flat pleated filter
- Newly developed accessories for perfect cleaning results
- Hygienic fleece filter bag

Technical data

Order No.	1.348-150.0	
EAN code	4039784916432	
Actual suction power*	Air Watt	220
Energy use	W	1000
Container capacity	l	20
Container material	stainless steel	
Standard accessory ID	mm	35
Power cable	m	5
Supply voltage	V / Hz	220-240 / 50-60
Weight	kg	7.5
Dimensions (L × W × H)	mm	384 × 365 × 526

Equipment

Suction hose	m / mm	2.2 / 35	Accessory storage	■
Removable handle		■	Cable hook	■
Suction tubes	piece(s) / m / mm	2 × 0.5 / 35 / Plastic		
Wet and dry floor nozzle		clips with 2 rubber and 2 brush strips		
Flat pleated filter		in removable filter box		
Fleece filter bag	piece(s)	1		
Crevice nozzle		■		
Suction tube for coarse dirt	m / mm	-		
Parking position		■		
Rotary switch (on/off)		■		
Sturdy bumper		■		

■ * Measured at the suction tubes according to the IEC 60312 standard.

WD 4 PREMIUM 1.348-150.0

KÄRCHER



		Order No.	Quantity				Price	Description	
Filters									
Flat pleated filter	1	2.863-005.0	1 piece(s)					Flat pleated filter for Kärcher Home & Garden multi-purpose vacuum cleaners from the MV 4 to MV 6 ranges and WD 4 to WD 6 ranges. The embedding in the designated filter box on the device allows filter exchange without coming into contact with dirt.	■
Fleece filter bag	2	2.863-006.0	4 piece(s)					Extremely tear-resistant fleece filter bags with a high dust retention rate. Significantly longer suction intervals compared with paper filter bags. For all Kärcher Home & Garden multi-purpose vacuum cleaners from the MV 4 to MV 6 ranges and WD 4 to WD 6 ranges.	□
Accessory kits									
Car interior cleaning kit	3	2.863-225.0	7 -part					Optimised car interior cleaning kit for complete interior car cleaning: from the dashboard to car seats, upholstered surfaces, foot mats, crevices, gaps and car boots.	□
Brush car set	4	2.863-221.0	2 -part					The suction brush set allows thorough car interior cleaning that is appropriate to the material being cleaned, from dashboards to foot mats and upholstered surfaces. For all Home & Garden multi-purpose vacs.	□
Household kit	5	2.863-002.0	2 -part					The Home Kit includes a switchable dry vacuum floor nozzle and an upholstery nozzle. The practical accessory kit is suitable for all Kärcher multi-purpose vacuum cleaners from the Home & Garden area.	□
Vacuum kit for power tools	6	2.863-112.0	2 -part					Flexible suction hose (1 m) including adapter for connecting hose to the dust exhaust connection of power tools (e.g. jigsaws, grinders, drills, planes, etc.) For clean DIY.	□
Car interior cleaning Kit	7	2.862-128.0	7 -part					Extensive accessory kit for all jobs in the car. For cleaning car boots, footwells, dashboards, seats, side pockets, foot-mats, etc.	□
Nozzles									
Switchable wet and dry floor nozzle with integrated parking nib	8	2.863-000.0	1 piece(s)					Switchable wet and dry vacuum nozzle for perfect dirt intake. Easy adaptation to wet or dry dirt using foot switch. For all Kärcher Home & Garden multi-purpose vacuum cleaners.	□
Extra long crevice nozzle	9	2.863-223.0	1 piece(s)					Fully redesigned, extra long crevice nozzle. Ideal for hard-to-reach places inside the car (for example gaps and crevices). Suitable for all Kärcher Home & Garden multi-purpose vacs.	□
Car nozzle/suction nozzle for large areas	10	2.863-145.0	1 piece(s)					Handy car vacuuming tool for quick and easy cleaning - from the footwell to the boot.	□
Suction brush with hard bristles	11	2.863-146.0	1 piece(s)					Brush for thoroughly cleaning car upholstery and carpets. Hard brush easily removes dried dirt.	□
Suction brush black	12	2.863-147.0	1 piece(s)					Brush with extra soft bristles for gentle cleaning of sensitive surfaces in the car, e.g. dashboards or centre consoles.	□
Special applications									
Ash filter/coarse dirt filter Basic	13	2.863-139.0						Coarse dirt/ash filter for cleaning fireplaces, tiled stoves, barbecues, sauna ovens, etc., as well as removing coarse dirt.	□
Ash filter/coarse dirt filter Premium	14	2.863-161.0						Premium coarse dirt/ash filter with fine filter suitable for cleaning fireplaces, tiled stoves, barbecues, sauna ovens, etc., as well as removing coarse dirt.	□

■ □ Available accessories.

WD 4 PREMIUM 1.348-150.0



		Order No.	Quantity				Price	Description	
3.5 m suction hose extension	15	2.863-001.0						The 3.5 m long suction hose extension is suitable for all Kärcher multi-purpose vacuum cleaners from the Home & Garden area and ensures a larger working radius and greater free movement.	<input type="checkbox"/>
Extension suction tube	16	2.863-148.0						Practical extension suction tube for greater flexibility. Suction tube can be extended for difficult to reach areas, e.g. high ceilings.	<input type="checkbox"/>
Drill dust catcher	17	2.863-234.0						The new accessory for our multi-purpose vacuum cleaners WD 2-6 allows safe and dust-free holes in conventional wall and ceiling surfaces. Drill dust is suctioned directly from the drill hole.	<input type="checkbox"/>

■ Available accessories.