

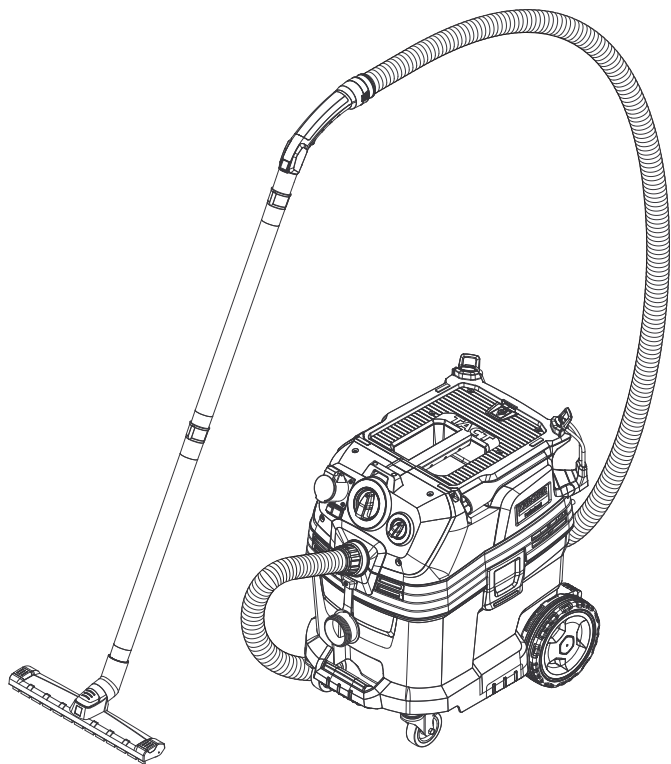
KÄRCHER

makes a difference

NT 30/1 Tact Te H

English

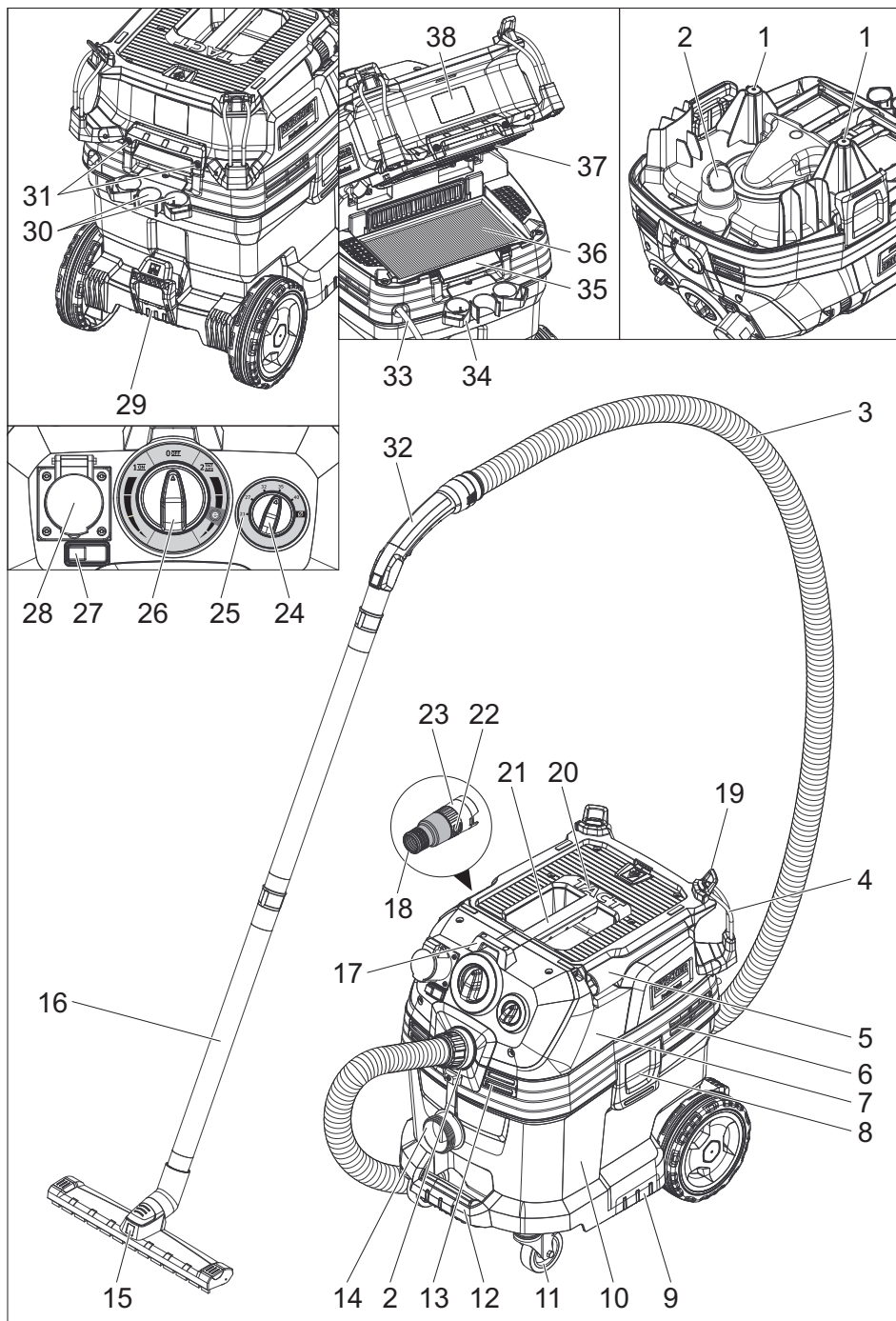
7

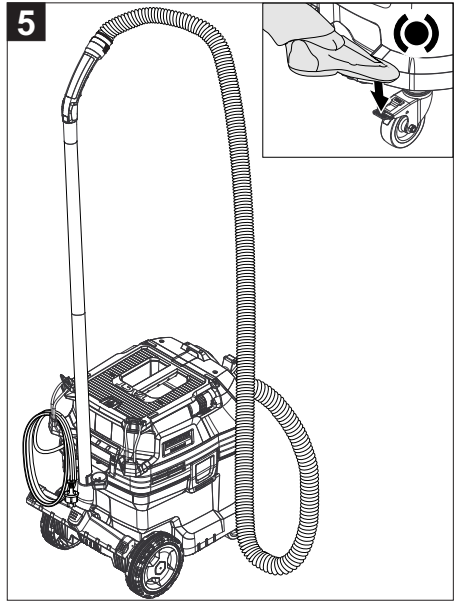
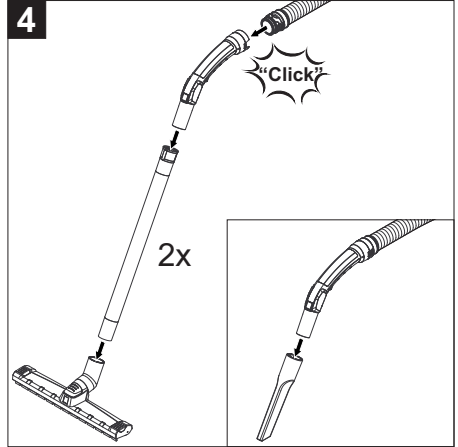
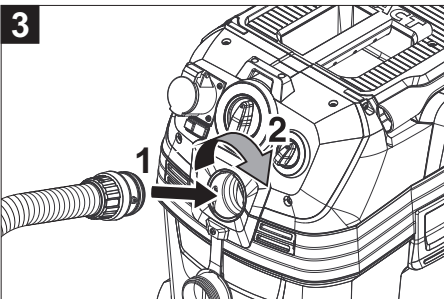
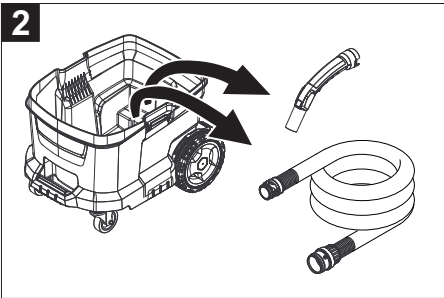
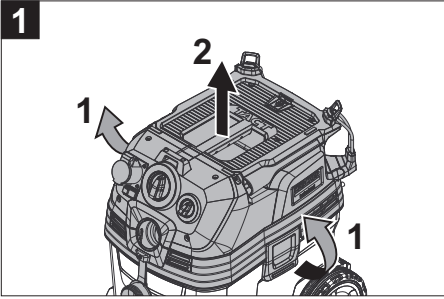
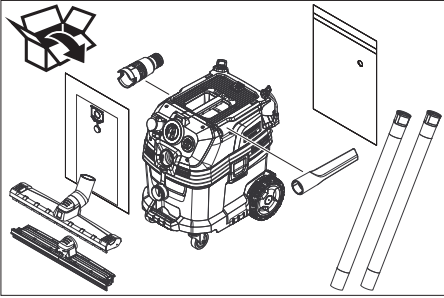


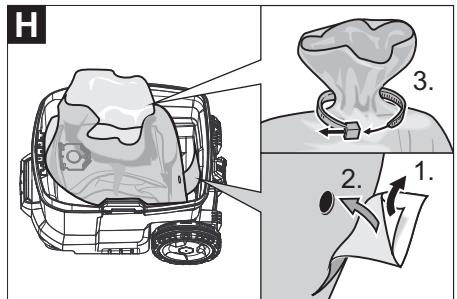
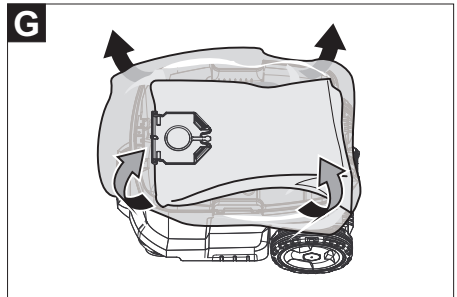
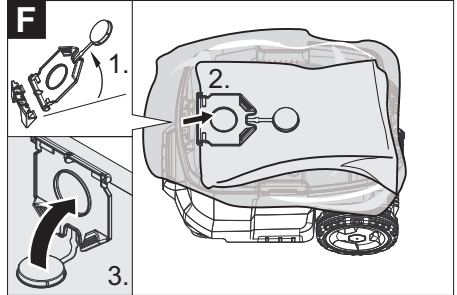
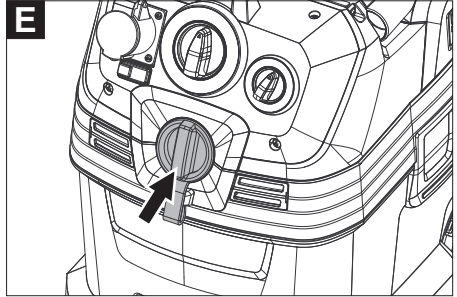
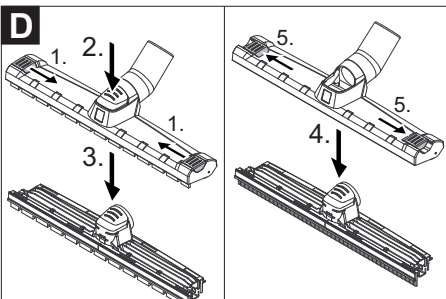
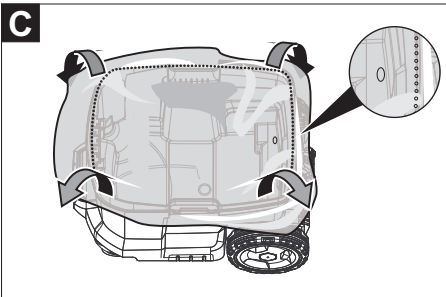
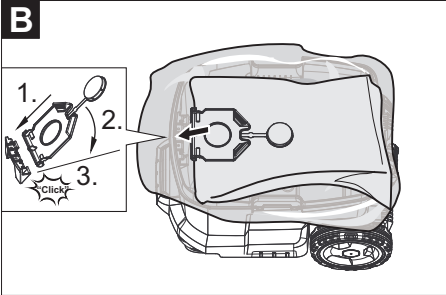
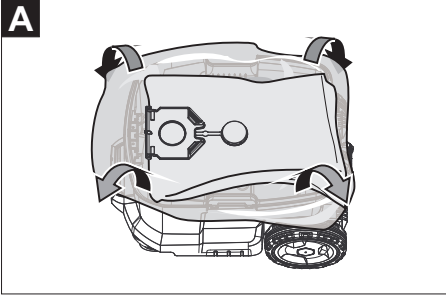
Register and win!
www.kärcher.com/register-and-win

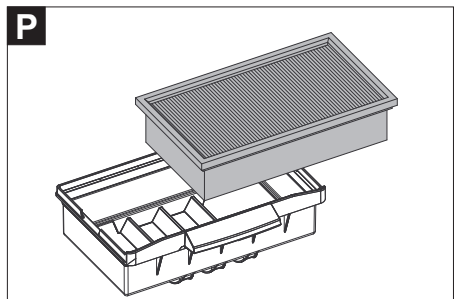
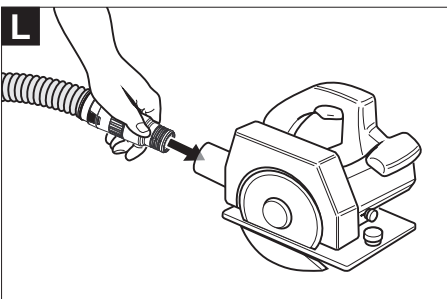
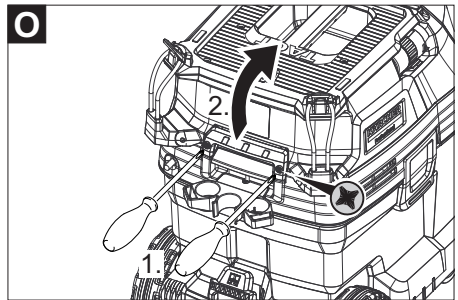
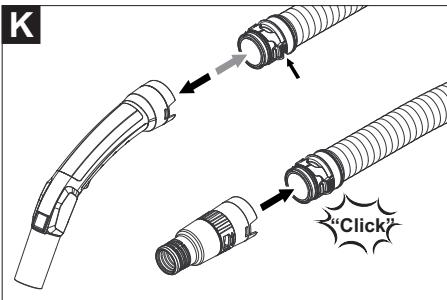
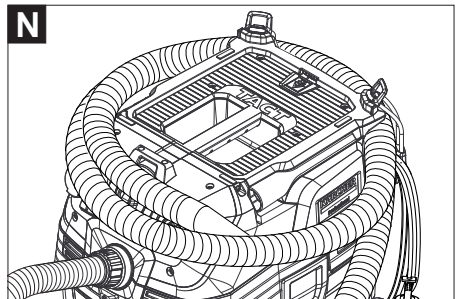
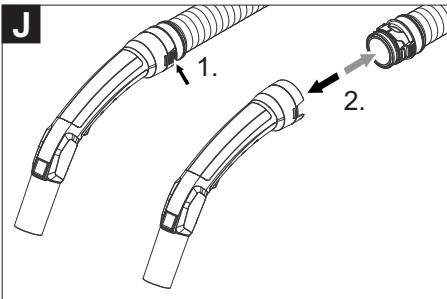
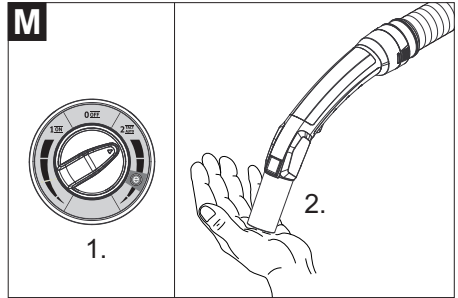
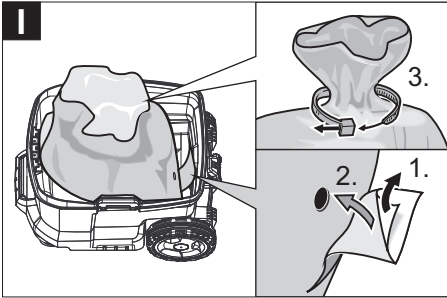


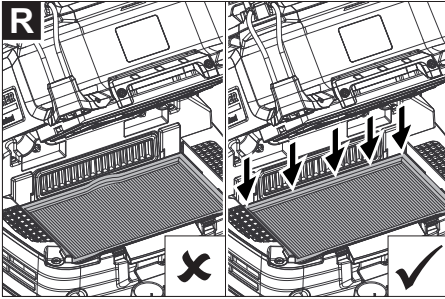
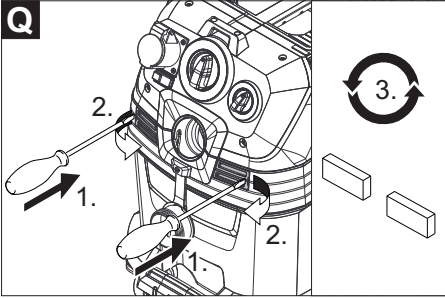
59685360 05/18













Please read and comply with these original instructions prior to the initial operation of your appliance and store them for later use or subsequent owners.

- Before first start-up it is definitely necessary to read the safety indications Nr. 5.956-249.0!
- The non-compliance of the operating and safety instructions may lead to damages of the appliance and to dangers for the operator and other persons.
- In case of transport damage inform vendor immediately.

Contents

Environmental protection	EN	1
Danger or hazard levels	EN	1
Proper use	EN	1
Device elements	EN	2
Safety instructions	EN	2
Safety Devices	EN	2
Start up	EN	3
Operation	EN	4
Transport	EN	6
Storage	EN	6
Care and maintenance	EN	6
Troubleshooting	EN	8
Disposal	EN	9
Warranty	EN	9
Accessories and Spare Parts .	EN	9
EU Declaration of Conformity .	EN	9
Technical specifications	EN	10

Environmental protection



The packaging material can be recycled. Please do not throw the packaging material into household waste; please send it for recycling.



Old appliances contain valuable materials that can be recycled; these should be sent for recycling. Batteries, oil, and similar substances must not enter the environment. Please dispose of your old appliances using appropriate collection systems.

Notes about the ingredients (REACH)

You will find current information about the ingredients at:

www.kaercher.com/REACH

Danger or hazard levels

⚠ DANGER

Pointer to immediate danger, which leads to severe injuries or death.

⚠ WARNING

Pointer to a possibly dangerous situation, which can lead to severe injuries or death.

⚠ CAUTION

Pointer to a possibly dangerous situation, which can lead to minor injuries.

ATTENTION

Pointer to a possibly dangerous situation, which can lead to property damage.

Proper use

- The machine is meant for dry and wet cleaning of floors and walls.
- The appliance is suited for the extraction of dry, non-combustible, harmful dusts on machines and appliances; dust class H according to EN 60 335-2-69.
- This appliance is suited for the commercial use, e.g. in hotels, schools, hospitals, factories, shops, offices, and rental companies.

Device elements

- 1 Electrodes
- 2 Suction support
- 3 Suction hose
- 4 Hose hook
- 5 Crevice nozzle
- 6 Air outlet, working air
- 7 Suction head
- 8 Suction head lock
- 9 Recessed grip
- 10 Dirt receptacle
- 11 Steering roller
- 12 Handle
- 13 Air inlet, motor cooling air
- 14 Stopper
- 15 Floor nozzle
- 16 Suction tube
- 17 Stop for tool box
- 18 Rubber sleeve, screwable
- 19 Fixing eyelet
- 20 Filter cover
- 21 Carrying handle
- 22 Suction force regulator (continuous)
- 23 Tool adapter
- 24 Rotary switch for suction hose cross section
- 25 Scale of the suction hose cross section
- 26 Rotating knob with suction output regulation
- 27 Automatic remote start - electric tool
- 28 Socket
- 29 Floor nozzle holder
- 30 Holder for suction pipe
- 31 Filter cover locking lug
- 32 Bender
- 33 Power cord
- 34 Holder for bender
- 35 Filter frame
- 36 Flat fold filter (PTFE H)
- 37 Filter dedusting
- 38 Nameplate

Safety instructions

- ⚠ DANGER**
- *When the outgoing air is carried back into the room, a sufficient ventilation rate L in the room must be ensured. To comply with the required limit values the carried back volume flow must be 50% of the fresh air volume flow (room volume V_R x ventilation rate L_W) at maximum. Without a specific ventilation system the following applies: $L_W=1h^{-1}$.*
 - *Only persons trained in the use of the machine and the handling of substances for which the machine is to be used including training in the safe disposal of the sucked-in material may use the machine.*
 - *This appliance contains harmful dust. Evacuation and maintenance work, including the disposal of the dust collection containers, may only be performed by specialists who wear the appropriate protective equipment.*
 - *Do not use the appliance without the complete filtering system.*
 - *Please follow the safety regulations applicable to the materials that are to be treated.*
 - *Press the parking brake to the steering roller for a secure footing. The device may move uncontrollably if the parking brake is open.*

Safety Devices

Monitoring of the flat fold filter

If the device is operated without a flat fold filter, it automatically switches off.

Start up



→ If necessary, peel the adhesive label in the relevant national language off the accompanying adhesive label sheet and paste it over the German text on the appliance.

The appliance allows 2 operating modes:

1 Industry vacuum cleaner mode (socket not used)

2 Dedusting mode (socket used)

→ Connect the suction hose and insert the suction nozzle or connect to the dust-generating device depending on the operating mode.

⚠ **WARNING**

Do not vacuum without the filter elements; otherwise, the suction motor can get damaged and this can be hazardous to health on account of increased release of fine dust particles.

Horn

Interval tone

The horn blows (interval tone) when the air speed falls below 20 m/s.

Note: The horn reacts to negative pressure.

→ Set the rotary switch to the correct suction hose cross-section.

Permanent tone

The horn blows (permanent tone) when the cooling air filter is clogged.

→ Allow appliance to cool down. Clean/replace the cooling air filter.

Anti-static system

Static charge is deflected by providing earthing to the connection nozzles. This prevents the formation of sparks and current shocks with attachments with electrical conductivity (included in the delivery).

Dry vacuum cleaning

- The appliance is equipped with a safety filter bag with a sealing cap, order no. 2.889-183.0 (5 pcs).
- The device is equipped with a dust bag with cable ties, order no. 2.889-231.0 (10 pieces).

Note: You can use this appliance to take up all types of dust up to dust class H. It is statutorily necessary to use a dust collection bag (see Filter systems for order number).

Note: The appliance is suited as industrial vacuum cleaner and as dedusting device for the mobile operation to take up dry, non-combustible dusts with AGW values.

- Unused flat-fold filters may only be stored and transported in the packaging (carton).

⚠ **WARNING**

The flat fold filter and the safety filter bag/ dust bag may never be removed during vacuuming.

Installing the safety filter sack

→ Release and remove the suction head.

Illustration **A**

→ Pull the safety filter sack over the container.

Illustration **B**

→ Insert the safety filter sack.

→ Insert and lock the suction head.

Installing the dust disposal bag

Illustration **C**

→ Release and remove the suction head.

→ Insert the disposal bag.

→ Pull disposal bag over the container. Ensure that the marking line is within the container and the ventilation hole is positioned on the back wall of the container.

→ Insert and lock the suction head.

Wet vacuum cleaning

⚠ **DANGER**

No dusts hazardous to health should be sucked in during wet vacuuming.

Inserting the rubber lips

Illustration D

- Remove the brush strips.
- Install the rubber lips.

Close the suction connection

Illustration E

- Precisely fit the plug into the suction connection.
- Insert the plug up to the stop.

Removing the safety filter sack

- Release and remove the suction head.

Illustration F

- Pull safety filter bag on the flange up and out.
- Close tightly the opening of the suction connection of the safety filter sack using the closing lid.

Illustration G

- Pull over the safety filter sack.

Illustration H

- Take off the protective film and close the ventilation hole with a self-adhesive tab.
- Securely close the safety filter bag with the attached cable tie.
- Remove the safety filter bag.
- Wipe the inside of the container using a damp cloth.
- Dispose of the safety filter bag in a dust-tight bag according to the statutory provisions.
- Insert and lock the suction head.
 - To suck wet dirt, always remove the safety filter bag.

Removing the dust disposal bag

Illustration I

- Release and remove the suction head.
- Put the disposal bag over.
- Take off the protective film and close the ventilation hole with a self-adhesive tab.
- Tightly close the disposal bag with cable tie underneath the opening.
- Remove disposal bag.
- Wipe the inside of the container using a damp cloth.
- Dispose of the disposal bag according to the local provisions.
- Insert and lock the suction head.

- To suck wet dirt, always remove the disposal bag.

General

△ **WARNING**

The flat pleated filter must always be in place while vacuuming.

- If wet dirt is vacuumed with the upholstery or crevice nozzle, or if water is sucked up from a container, it is recommended to deactivate the "automatic filter cleaning" function.
- If the maximum liquid level is reached the appliance will turn off automatically.
- **In case of non-conductive liquids (such as emulsion drilling fluids, oils, and greases) the appliance is not turned off when the container is full. The filling level must be continuously monitored and the container must be emptied in time.**
- After the wet vacuuming: Clean the flat folded filter with the filter cleaning. Clean the electrodes with a brush. Clean the container with a damp rag and dry it.

Clip connection

Illustration J

The suction hose is equipped with a clip system. All accessories with a nominal width of 35 mm can be connected.

Operation

Rotating knob

0 OFF	Appliance OFF
1 ON	<ul style="list-style-type: none">– Appliance ON– Automatic filter cleaning: OFF– Set the suction output (min - max)
2 TACT AUTO	<ul style="list-style-type: none">– Appliance ON– Automatic filter cleaning: ON– Set the suction output (min - max) (eco = energy saver mode)

Turning on the Appliance

- Plug in the mains plug.
- Set the rotary switch to the desired program.

Working with electrical power tools

⚠ **DANGER**

Risk of injury and damage! The socket outlet is only for the connection of power tools to the vacuum cleaner. Any other use of the socket outlet is not permitted.

- Connect the mains plug of the electric power tool to the vacuum cleaner.
- Switch on the appliance at the rotating knob.
- Switch on the automatic remote control:
 - Press the left switch. The vacuum cleaner is turned on and off automatically with the electric power tool.
 - Switch off the automatic remote control:
 - Press the right switch.

Note: The vacuum cleaner starts automatically within 0.5 seconds and continues to run for 15 seconds after the power tool has been switched off.

Note: Please refer to "Technical specifications" for the power connection specifications of the power tools.

Illustration

- Remove the elbow from the suction hose.
- Attach the tool adapter to the suction hose.

Illustration

- Connect the tool adapter to the electric power tool.

Note: The different suction hose sections are required to allow an adjustment to the connection sections of the processing tools.

- Set the minimum volume flow for the suction hose cross section at the rotary switch.

The scale displays the suction hose cross section.

Note: To use the appliance as dedusting device for the mobile operation (processing tool connected to the vacuum cleaner) the built-in monitoring must be adjusted to the connected processing tool (dust-generating device). This means that the user must be warned if the minimum volume flow of 20 m/s that is required for the suction is fallen short of.

Note: Please refer to the type plate for the specification of the minimum volume flow in dependence on the negative pressure.

Automatic filter cleaning

The appliance has an special filter cleaning system that is particularly effective with fine dust. The flat pleated filter is automatically cleaned every 7.5/15/60 seconds (depending on the application) through an air jet (pulsating sound).

- Set the rotary switch to program 2 (TACT AUTO).

Illustration

- Power dedusting (especially with severe soiling of the flat pleated filter): Set the rotary switch to program 2, cover the suction tube or the bender with your hand and wait for the automatic filter dedusting (every 15 seconds).

Turn off the appliance

- Switch off the appliance at the rotating knob.
- Pull out the mains plug.

After each operation

- Empty the container.
- Vacuum and wipe the appliance inside and outside with a damp cloth.

Storing the Appliance

Illustration

- Store the suction hose and the mains cable as shown in the illustration.
- Place the appliance in a dry room and secure it from unauthorized use.

Transport

⚠ CAUTION

Risk of injury and damage! Observe the weight of the appliance when you transport it. Ensure proper fastening of the device during transportation.

You need to take the following measures for dust-free transportation of the device:

- ➔ Place the suction hose with attachment in the delivered transport sack. Close the transport sack
Order no. transport sack: 6.277-454.0
- ➔ Close the suction connection, see wet vacuuming.
- ➔ Remove the suction pipe with the floor nozzle from the holder. Hold the appliance at the handle and at the suction pipe to transport it.
- ➔ When transporting in vehicles, secure the appliance according to the guidelines from slipping and tipping over.

Storage

⚠ CAUTION

Risk of injury and damage! Note the weight of the appliance in case of storage.

This appliance must only be stored in interior rooms.

Care and maintenance

⚠ DANGER

First pull out the plug from the mains before carrying out any tasks on the machine.

Dust extracting machines are safeguards for the prevention or elimination of hazards defined in the regulations of BGV A1.

- In order to carry out maintenance work, the user must disassemble, clean and service the unit, in so far as this is possible without endangering maintenance personnel and other persons. Suitable precautions include decontamination before the unit is disassembled. Precautions must be taken for local filtered forced air ventilation at the place where the unit is disassembled, the cleaning of the maintenance surface and suitable protection of the personnel.

- The outside of the unit should be cleaned thoroughly and any harmful substances removed. Alternatively, a sealed coating may be applied before the unit is removed from the danger area. All unit parts are to be considered contaminated when they are removed from the danger area. To avoid distribution of the dust, you must take the appropriate measures.
- In the framework of maintenance and repair work all contaminated objects that cannot be cleaned satisfactorily must be disposed of. Such objects must be disposed of in impermeable bags in accordance with the valid provisions for the disposal of such waste.
- When transporting or maintaining the device, the suction opening must be closed with the plug.

⚠ WARNING

Safety equipment for preventing hazards must be serviced and maintained regularly. This means that the manufacturer's staff or persons trained by the manufacturer must check the equipment for proper functioning at least once a year, i.e. check for leaks, filter damage, functioning of the controlling elements, etc.

⚠ DANGER

You can test the filtration capacity of the device using the test procedure specified in EN 60 335–2–69 22.AA.201.2. This test must be done at least once a year or more frequently if the national regulations demand it. If the test results are negative, the test is to be repeated with a new flat-fold filter.

Note: Industrial vacuum cleaners/dedusters must be maintained as needed, but at least once per year, repaired as necessary and checked by a skilled expert. The test result must be presented upon request.

ATTENTION

Risk of damage! Do not use detergents containing silicone to clean.

- No outside help is required for carrying out basic maintenance and cleaning.

- The appliance surface and the inside of the container should be cleaned regularly using a damp cloth.

⚠ DANGER

Risk due to dust hazardous to health. Always use disposal clothing and P2 or higher breath-safe masks while carrying out maintenance tasks (such as changing filters).

Exchanging the flat pleated filter

⚠ DANGER

The dust that has been collected should be transported in dust-proof containers. No re-filling is permitted. The waste containing asbestos is to be disposed off according to the rules and regulations for waste disposal.

⚠ WARNING

Do not reuse the main filter element after it has been removed from the appliance.

Non-detachable filters should only be replaced in suitable rooms (so-called decontamination stations) by an expert.

Order no. flat fold filter: 6.907-671.0

Illustration **Q**

- Rotate both locking lugs of the filter cover using the screwdriver in the anti-clockwise direction. The locking lugs are pushed out.

- Open filter door.

Illustration **P**

- Remove filter frame.
- Take out the flat folded filter.
- On removing the flat-fold filter, cover the same immediately with the enclosed bag and close it.

Order no. bag: 6.592-049.0

- Dispose off the used flat-folded filter in a dust-tight bag according to the statutory provisions.
- Remove the dirt that has accumulated on the pure air side.
- Insert new flat-folded filter.
During placement, make sure that the flat fold filter rests against all sides.
- Insert filter frame.
- Close the filter door, it must lock into place.

- Push both locking lugs of the filter cover in with the screwdriver and tighten them in a clockwise direction.

Change safety filter bag/dust bag

Close the suction connection

Illustration **E**

- Close the suction connection, see wet vacuuming.

Replacing the safety filter sack

⚠ DANGER

The dust that has been collected should be transported in dust-proof containers. No re-filling is permitted. The waste containing asbestos is to be disposed off according to the rules and regulations for waste disposal.

⚠ DANGER

Only persons trained in waste disposal are permitted to dispose off the dust collection container.

- Release and remove the suction head.

Illustration **F**

- Pull safety filter bag on the flange up and out.
- Close tightly the opening of the suction connection of the safety filter sack using the closing lid.

Illustration **G**

- Pull over the safety filter sack.

Illustration **H**

- Take off the protective film and close the ventilation hole with a self-adhesive tab.
- Securely close the safety filter bag with the attached cable tie.
- Remove the safety filter bag.
- Wipe the inside of the container using a damp cloth.
- Dispose of the safety filter bag in a dust-tight bag according to the statutory provisions.

Illustration **A**

- Pull the new safety filter bag over the container.

Illustration **B**

- Insert the safety filter sack.
- Insert and lock the suction head.

Replace the disposal bag

Illustration

- Release and remove the suction head.
- Put the disposal bag over.
- Take off the protective film and close the ventilation hole with a self-adhesive tab.
- Tightly close the disposal bag with cable tie underneath the opening.
- Remove disposal bag.
- Wipe the inside of the container using a damp cloth.
- Dispose of the disposal bag according to the local provisions.
- Insert the new disposal bag.
- Pull disposal bag over the container. Ensure that the marking line is within the container and the ventilation hole is positioned on the back wall of the container.
- Insert and lock the suction head.

Clean/replace the cooling air filter

Illustration

- Allow device to cool down.
- Release the cooling air flaps with screwdriver and swivel them out.
- Clean (vacuum, wash) or replace the cooling air filter.
- Fold in the cooling air flaps and snap them in place.

Cleaning the electrodes

- Release and remove the suction head.
- Clean the electrodes with a brush.
- Insert and lock the suction head.

Troubleshooting

DANGER

First pull out the plug from the mains before carrying out any tasks on the machine.

Note: In case of a failure (e.g. filter breakage) the appliance must be turned off immediately. The failure must be remedied before the appliance is put into operation again.

Suction turbine does not run

- Check the receptacle and the fuse of the power supply.

- Check the power cable, the power plug, the electrodes and the receptacle of the device.
- Turn on the appliance.

Suction turbine turns off

- Empty the container.
- Insert flat folded filter.

Suction turbine does not start again after the container has been emptied

- Turn off the appliance and wait for 5 seconds, turn it on again after 5 seconds.
- Clean the electrodes as well as the space between the electrodes with a brush.

Suction capacity decreases

- Remove blockages in the suction nozzle, suction tube, suction hose, or flat pleated filter.
- Replace the safety filter sack.
- Replace the filled disposal bag
- Ensure the filter cover properly locks into place.
- Replace the flat pleated filter.

Dust comes out while vacuuming

Illustration

- Check/correct the correct positioning of the flat pleated filter.
- Replace the flat pleated filter.

Automatic shut-off (wet vacuum cleaning) does not react

- Clean the electrodes as well as the space between the electrodes with a brush.
- Continuously check the filling level in case of non-conductive liquid.

Horn sounds - interval tone

- Set the rotary switch to the correct suction hose cross-section.
- The safety filter sack must be replaced when it is full and the minimum volume flow is fallen short of.

- If the disposal bag is full and the minimum volume flow is fallen short of it has to be replaced.
- Replace the flat pleated filter.

Horn sounds - permanent tone

- Allow appliance to cool down. Clean/replace the cooling air filter.

Automatic filter cleaning is not working

- Suction hose is not connected.

Automatic filter cleaning cannot be switched off

- Inform Customer Service.

Automatic filter cleaning cannot be switched on

- Inform Customer Service.

Customer Service

If malfunction can not be fixed, the device must be checked by customer service.

Disposal

At the end of its lifetime the appliance is to be disposed of according to the statutory provisions.

Warranty

The warranty terms published by the relevant sales company are applicable in each country. We will repair potential failures of your appliance within the warranty period free of charge, provided that such failure is caused by faulty material or defects in manufacturing. In the event of a warranty claim please contact your dealer or the nearest authorized Customer Service centre. Please submit the proof of purchase.

Accessories and Spare Parts

Only use original accessories and spare parts, they ensure the safe and trouble-free operation of the device.

For information about accessories and spare parts, please visit www.kaercher.com.

EU Declaration of Conformity

We hereby declare that the machine described below complies with the relevant basic safety and health requirements of the EU Directives, both in its basic design and construction as well as in the version put into circulation by us. This declaration shall cease to be valid if the machine is modified without our prior approval.

Product: Wet and dry vacuum cleaner
Type: 1.148-xxx

Relevant EU Directives

2006/42/EC (+2009/127/EC)
 2014/30/EU
 2011/65/EU

Applied harmonized standards

EN 55014-1: 2006+A1: 2009+A2: 2011
 EN 55014-2: 2015
 EN 60335-1
 EN 60335-2-69
 EN 61000-3-2: 2014
 EN 61000-3-3: 2013
 EN 62233: 2008
 EN 50581

Applied national standards

-

5.966-337

The undersigned act on behalf and under the power of attorney of the company management.



H. Jenner
 Chief Executive Officer



S. Reiser
 Head of Approbation

Authorised Documentation Representative
 S. Reiser




Alfred Kärcher GmbH Co. KG
 Alfred-Kärcher-Str. 28 - 40
 71364 Winnenden (Germany)
 Phone: +49 7195 14-0
 Fax: +49 7195 14-2212

Winnenden, 2018/01/01

Technical specifications

		NT 30/1 Tact Te H
Mains voltage	V	110
Frequency	Hz	1~ 50-60
Rated power	W	1100
Container capacity	l	31
Filling quantity (liquid)	l	17
Air volume (max.)	m ³ /h	130
Negative pressure (max.)	kPa (mbar)	19,0 (190)
Power connection data of the power tools	W	100-1600
Surface of the flat fold filter	m ²	0,5
Type of protection	--	IPX4
Protective class	--	I
Diameter of the suction hose	mm	35
Length of the suction hose	m	4,0
Length x width x height	mm	560 x 370 x 580
Typical operating weight	kg	15,0
Values determined to EN 60335-2-69		
Sound pressure level L _{pA}	dB(A)	69
Uncertainty K _{pA}	dB(A)	2
Hand-arm vibration value	m/s ²	<2,5
Uncertainty K	m/s ²	0,2
Power cord	A07 QQ-F 3xAWG12	
	Part no.:	Cable length
GB	6.649-507.0	7,5 m

Filtersysteme / Filter Systems / Système de filtres

			
	Flachfaltenfilter (PTFE H) * Flat pleated filter (PTFE H) * Filtre plat à plis (PTFE H) *	Sicherheitsfiltersack Safety filter bag Sac filtrant de sécurité	Entsorgungsbeutel Disposal bag Sachet d'élimination
Bestell-Nr. Order No. Numéro de référence	6.907-671	2.889-183	2.889-231
Menge Quantity Quantité	1	5	10
Normalstäube Normal dust Poussières normales	X	X	X
Feinstäube Fine dust Poussières fines	X		X
Abrasive Stäube Abrasive dust Poussières abrasives	X	X	X
Flüssigkeiten, nasser Schmutz Liquids, wet dirt Liquides, saletés humides	X		

* Staubklasse H, Rückhaltevermögen $\geq 99,995\%$

* Dust class H, Retention $\geq 99,995\%$

* Classe de poussière H, Conservation $\geq 99,995\%$



<http://www.kaercher.com/dealersearch>

