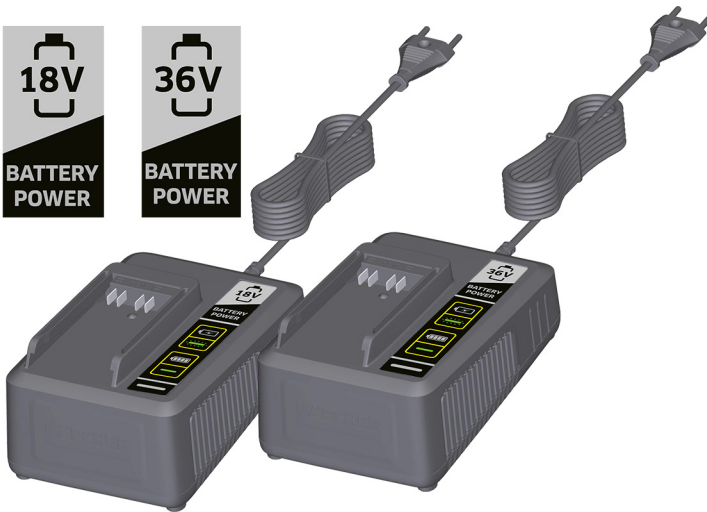


BC 18 V
BC 36 V

English

3



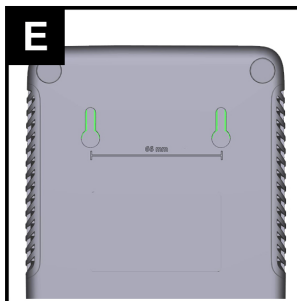
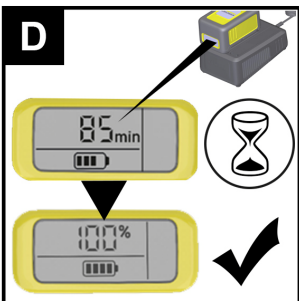
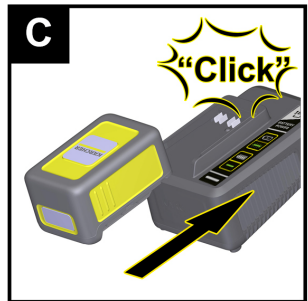
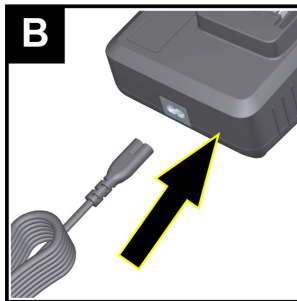
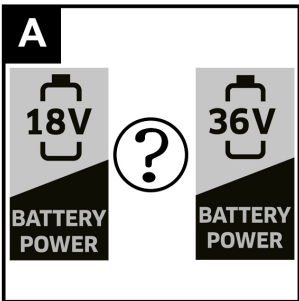
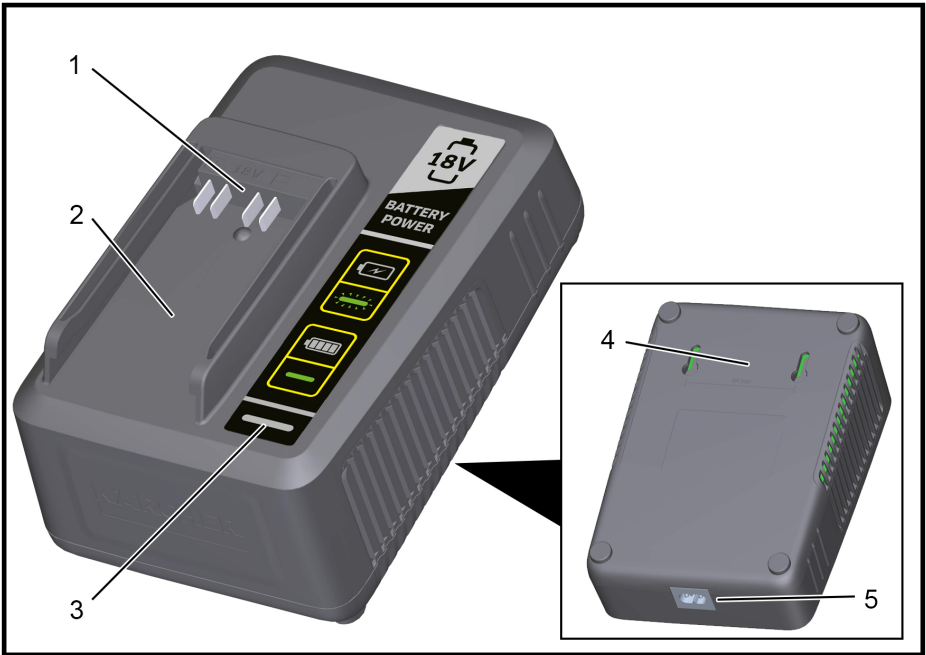
Register and win!
www.kärcher.com/register-and-win



EAC



59686480 02/19





Please read and comply with these original instructions prior to the initial operation of your appliance and store them for later use or subsequent owners.

Contents

Contents	EN	1
Safety instructions	EN	1
Environmental protection	EN	3
Symbols on the device	EN	3
Proper use	EN	3
Operating elements	EN	3
Operations	EN	4
Wall mount	EN	4
Transport	EN	4
Storage	EN	4
Care and maintenance	EN	4
Warranty	EN	4
Technical specifications	EN	4

Safety instructions

Hazard levels

⚠ DANGER

Pointer to immediate danger, which leads to severe injuries or death.

⚠ WARNING

Pointer to a possibly dangerous situation, which can lead to severe injuries or death.

⚠ CAUTION

Pointer to a possibly dangerous situation, which can lead to minor injuries.

ATTENTION

Pointer to a possibly dangerous situation, which can lead to property damage.

General notes on safety

⚠ DANGER

Risk of electric shock.

- *Turn off the appliance and remove the mains plug prior to any care and maintenance works.*
- *Repair work and work on the electrical components may only be performed by an authorised customer service.*
- *Check the power cord with mains plug for damage prior to every use. Immediately have damaged power cord replaced by an authorised customer service / electrician. Do not operate an appliance if the power cord is damaged.*
- *Do not use scouring agents, glass or multi-purpose cleaners!*
- *Do not immerse the appliance into water!*
- *Do not scrape the power cord across sharp edges and ensure that it does not get pressed.*

⚠ WARNING

- *This appliance can be used by children aged from 8 years and above and persons with reduced physical, sensory or mental capabilities or lack of experience and knowledge if they have been given supervision or instruction concerning use of the appliance in a safe way and understand the hazards involved. Children shall not play with the appli-*

ance. Cleaning and user maintenance shall not be made by children without supervision.

- Children should be supervised to prevent them from playing with the appliance.*
- Check charger, mains cable and battery pack for damages before every use. Do not use damaged devices and get the damaged parts repaired only by experts. Check extension wires regularly and replace them if damaged.*
- Do not use the charger if dirty or wet.*
- The mains voltage must match the voltage mentioned on the type plate of the charger.*
- Do not operate the charger in explosive environment.*
- Do not carry the charger by holding the mains cable.*
- Protect the mains cable against heat, sharp edges, oil and moving parts of the machine.*
- Avoid using extension wires with multiple sockets and simultaneous operation of multiple devices.*
- Do not pull the plug from the socket by pulling the mains cable.*
- Do not cover the charger and keep the air vents of the charger open.*

- No metal parts should come in contact with battery holders; risk of short circuit.*
- Do not open the charger. Get repairs done only by authorised experts.*
- Use the charger only to charge approved battery packs.*
- Move only clean and dry battery packs on to the battery holder of the charger.*
- Do not charge battery (primary cells); risk of explosion.*
- Do not charge damaged battery packs. Replace damaged battery packs.*
- Do not store battery packs along with metal objects; risk of short circuit.*
- Do not dispose off battery packs by throwing them into fire or through household waste.*
- Avoid contact with fluids oozing out of defective battery packs. Rinse with water in case of accidental contact with fluid. Consult a doctor if fluid comes into contact with eyes.*

Be sure to read the safety instructions enclosed with the battery pack and observe these during use!

Environmental protection



The packaging material can be recycled. Please arrange for the environmentally appropriate disposal of the packaging.



Electrical and electronic devices often contain components which could potentially pose a danger to human health and the environment if handled or disposed of incorrectly. However, these components are necessary for the proper operation of the device. Devices marked with this symbol must not be disposed of with regular household rubbish.

Old appliances contain valuable recyclable materials that should be recycled properly. Batteries and accumulators contain substances that must not enter the environment. Please dispose of old devices and batteries or accumulators in an environmentally friendly way.

Notes about the ingredients (REACH)

You will find current information about the ingredients at:

www.kaercher.com/REACH

Symbols on the device



Protect the charger against moisture and store it dry. The device is only suitable for use in rooms; do not expose the device to rain.



The charger meets the requirements of protective class II.



Battery pack is being charged. Indicator light is flashing.



Battery pack is fully charged. Indicator light is continuously lit.

Proper use

These operating instructions describe the battery chargers for the KÄRCHER 18 V and KÄRCHER 36 V Battery Power systems.

Illustration A

Please check that the battery pack and charger match before use!

Information on voltage (18 / 36 V) can be found on the device and on the type plate.

Battery packs 18 V Battery Power (+) system

Description	Rechargeable battery type		Rated capacity (according to IEC/EN 61690)	Rated capacity (according to specifications of cell manufacturer)	Charging time 80%, approx.	Charging time 100%, approx.
	Nominal voltage					
	Li-Ion	V	Ah	Ah	min	min
18/25		18	2,4	2,5	44	83
18/50		18	4,8	5,0	94	143

Battery packs 36 V Battery Power (+) system

Description	Rechargeable battery type		Rated capacity (according to IEC/EN 61690)	Rated capacity (according to specifications of cell manufacturer)	Charging time 80%, approx.	Charging time 100%, approx.
	Nominal voltage					
	Li-Ion	V	Ah	Ah	min	min
36/25		36	2,4	2,5	48	78
36/50		36	4,8	5,0	98	138

⚠ CAUTION

Risk of injury, risk of damage due to exploding battery pack! Only charge the specified battery types with this charger.

Only charge undamaged battery packs.

Modifications and changes that are not authorised by the manufacturer are prohibited for safety reasons.

Any other use is prohibited. The user is liable for any hazards arising from improper use.

Operating elements

- 1 Battery contacts
- 2 Battery pack receptacle
- 3 Indicator lamp
- 4 Wall mount
- 5 Power mains connector

Operations

Charging process

⚠ CAUTION

Risk of injury, risk of damage! Observe the operating instructions and safety instructions of the charger.

Note

New battery packs are only pre-charged and must be fully charged before first use.

The display is activated during the first charging process.

To ensure that the charge level indicator works correctly, the battery pack must be discharged during initial use until the device is switched off.

Illustration

- Insert the mains cable in the mains cable socket.
- Insert the mains plug into the socket.

Illustration

- Slide the battery pack onto the intake.
- The charging process begins automatically. Indicator lamp is blinking green

Illustration

The remaining charging time is displayed on the battery pack display.

When the battery pack is fully charged, the display shows 100% and the indicator light on the charger glows solid green.

- After charging, remove the battery pack from the charger.
- Pull out the mains plug.

Note

If the display does not show anything when the battery pack is in the charger, the battery capacity is fully depleted or very low. As soon as the battery pack has been sufficiently charged, the display shows the remaining charging time.

If the display does not show anything even after a long period of time, the battery pack is defective and must be replaced.

Note

New battery packs reach their full capacity after approx. 5 charging and discharging cycles.

Charge batteries that have not been used for a long time before use.

The performance of the battery pack is reduced at temperatures below 0°C.

The capacity of the battery pack may be reduced if stored at temperatures over 20°C.

Note

The charged battery pack can remain on the charger till it is to be used. There is no risk of over-charging. In order to avoid unnecessary energy consumption, the charger should, however, be unplugged as soon as the battery pack has been fully charged.

Wall mount

Illustration

The charger can be mounted on the wall.

Check the wall for load-bearing capacity prior to installation. Weight of the device including the battery pack, see "Technical data".

The mains plug must always remain freely accessible. Hole distance = 26 mm.

Transport

⚠ CAUTION

Risk of personal injury or damage! Mind the weight of the appliance during transport.

Storage

⚠ CAUTION

Risk of personal injury or damage! Consider the weight of the appliance when storing it.

This appliance must only be stored in interior rooms.

Care and maintenance

- Check charging contacts for soiling at regular intervals and clean them as necessary.
- Check ventilation slits for soiling and clean them if necessary.


Maintenance

The appliance is maintenance free.

Warranty

The warranty terms published by the relevant sales company are applicable in each country. We will repair potential failures of your appliance within the warranty period free of charge, provided that such failure is caused by faulty material or defects in manufacturing. In

Technical specifications

		Quick charger	
		BC 18 V	BC 36 V
Nominal battery voltage	V	18	36
Max. charging current	A	2,5	2,5
Battery pack type		Li-Ion	
Battery platform		Battery Power	
Rated charger voltage	V	100-240	
Frequency	Hz	50-60	
Power consumption	W	65,0	130,0
Protective class		II	
Power cable length (Quick charger)	m	2	
Dimensions (l x b x h)	mm	184 x 133 x 87	





THANK YOU!
MERCI! DANKE! ¡GRACIAS!



Registrieren Sie Ihr Produkt und profitieren Sie von vielen Vorteilen.

Register your product and benefit from many advantages.

Enregistrez votre produit et bénéficiez de nombreux avantages.

Registre su producto y aproveche de muchas ventajas.

www.kaercher.com/welcome



Bewerten Sie Ihr Produkt und sagen Sie uns Ihre Meinung.

Rate your product and tell us your opinion.

Évaluer votre produit et dites-nous votre opinion.

Reseñe su producto y díganos su opinión.



www.kaercher.com/dealersearch

Alfred Kärcher SE & Co. KG

Alfred-Kärcher-Str. 28-40

71364 Winnenden (Germany)

Tel.: +49 7195 14-0

Fax: +49 7195 14-2212

