

## K 5 Premium Smart Control

English

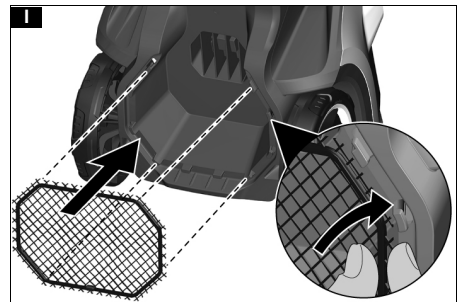
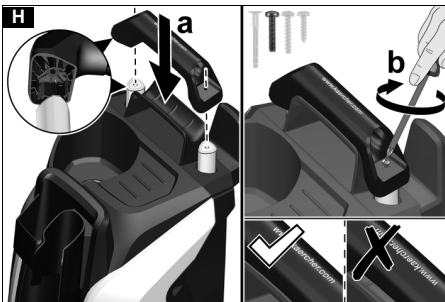
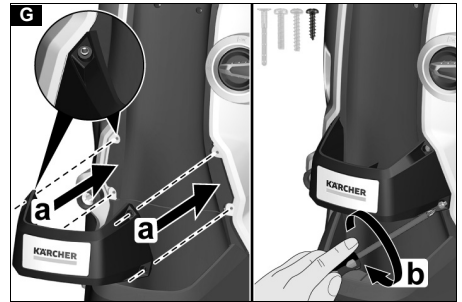
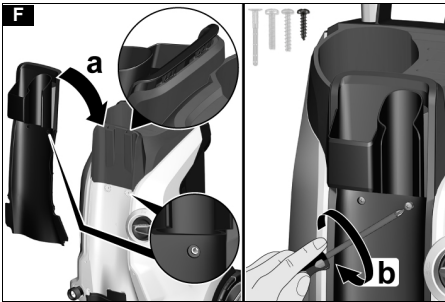
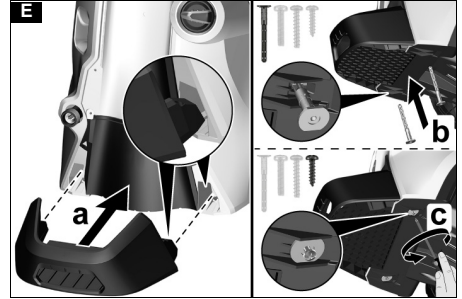
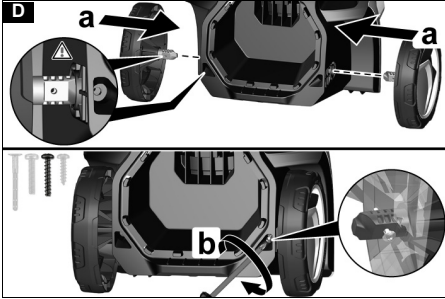
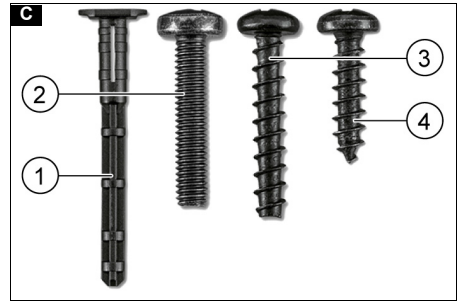
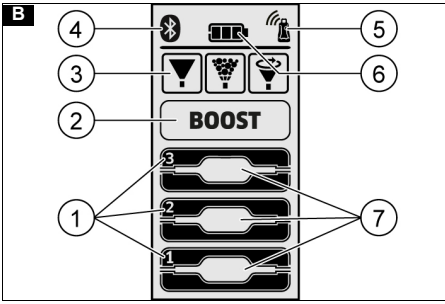


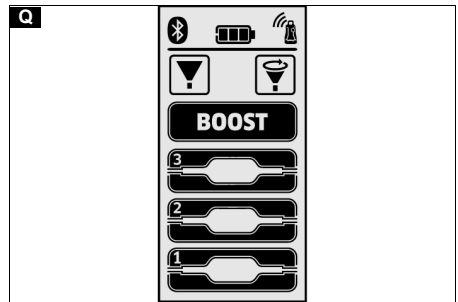
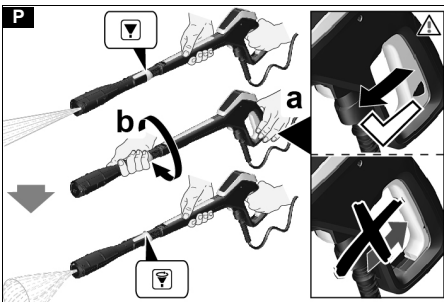
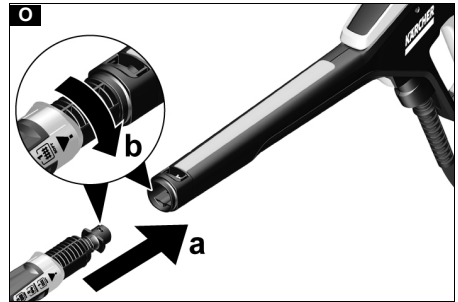
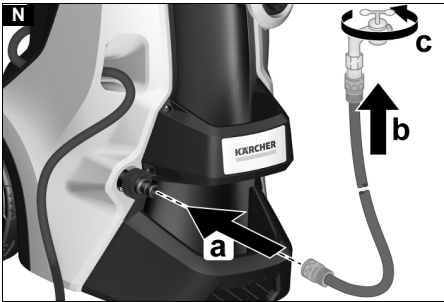
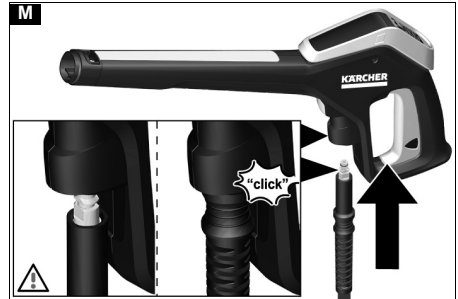
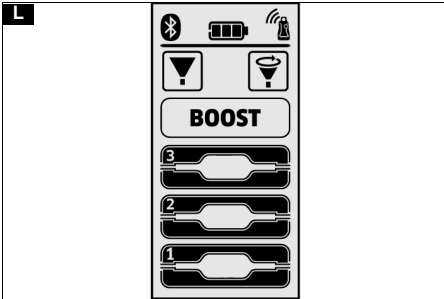
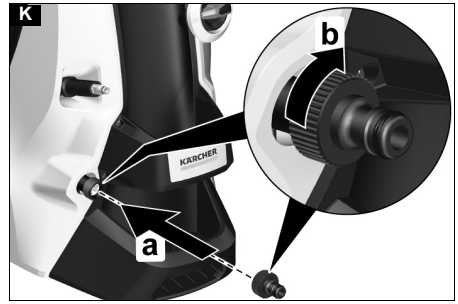
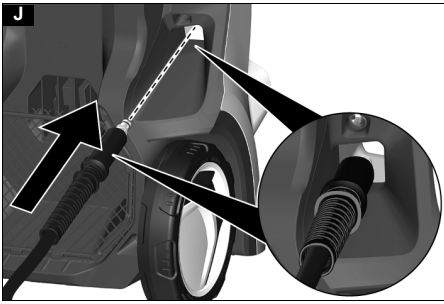
**Register  
your product**  
[www.kaercher.com/welcome](http://www.kaercher.com/welcome)

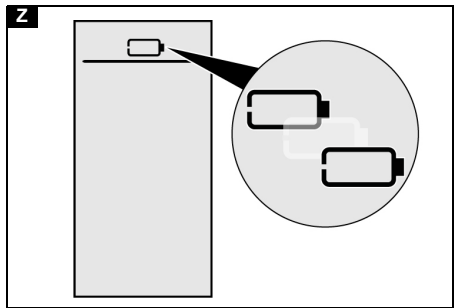
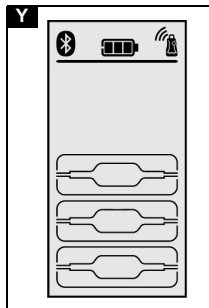
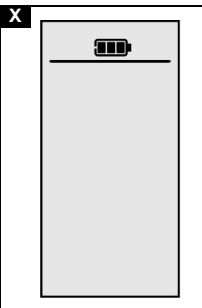
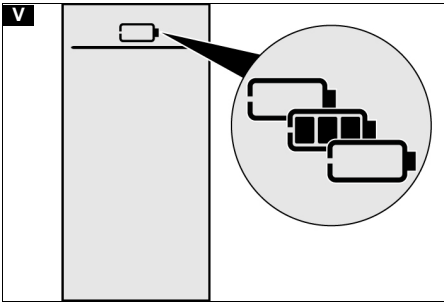
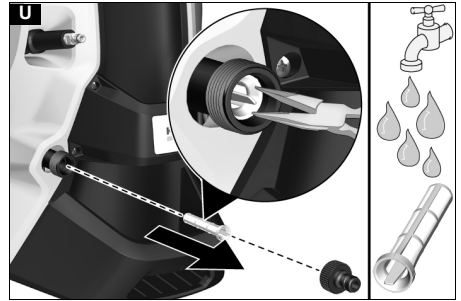
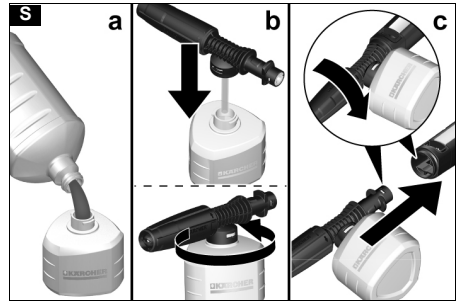
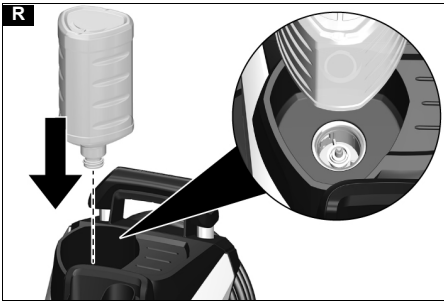


59693930 (10/21)









## Contents

KÄRCHER Home & Garden app .....	6
Safety instructions .....	6
Environmental protection .....	8
Intended use .....	8
Accessories and spare parts .....	8
Scope of delivery .....	8
Description of the device .....	8
Safety devices .....	9
Symbols on the device .....	9
Assembly .....	9
Initial Start-Up .....	10
Startup .....	10
Operation .....	11
Transport .....	12
Storage .....	13
Care and service .....	13
Troubleshooting guide .....	14
Warranty .....	15
Technical data .....	15

## KÄRCHER Home & Garden app

The device can be controlled by direct operation on the high-pressure gun or via a mobile device equipped with Bluetooth® wireless technology. The KÄRCHER Home & Garden app is required for this.

The app also contains:

- Installation and initial startup information
- Information about the areas of application
- Tips & Tricks
- FAQ with detailed troubleshooting
- Connection to the KÄRCHER Service Centre

The app can be downloaded here:



### Trademarks

- Bluetooth® wordmarks and logos are registered trademarks of Bluetooth SIG, Inc. Any use of these trademarks by Alfred Kärcher SE & Co. KG is under license.
- Google Play™ and Android™ are trademarks or registered trademarks of Google Inc.
- Apple® and App store® are trademarks or registered trademarks of Apple Inc.

## Safety instructions



Read this safety chapter and these original instructions before using the device for the first time. Act in accordance with them. Keep the original instructions for future reference or for future owners.

- In addition to the notes in the operating instructions, you also need to take into consideration the general safety regulations and accident prevention guidelines applicable by law.
- Warnings and information notices attached to the device provide important information for hazard-free operation.

### Hazard levels

#### **DANGER**

- Indication of an imminent threat of danger that will lead to severe injuries or even death.

#### **WARNING**

- Indication of a potentially dangerous situation that may lead to severe injuries or even death.


#### **CAUTION**

- Indication of a potentially dangerous situation that may lead to minor injuries.


### **ATTENTION**


- Indication of a potentially dangerous situation that may lead to damage to property.


### Protective gear

 **CAUTION** • Wear suitable protective clothing and safety goggles to protect yourself from water or dirt backslash. • Aerosols can be formed when using high-pressure cleaners. Inhaling aerosols can be harmful for your health. Depending on the application, the use of fully shielded nozzles (e.g. surface cleaners) can significantly lower the emission of aqueous aerosols. Depending on the environment to be cleaned, wear a suitable respiratory protective mask of class FFP 2 or comparable to protect yourself from inhaling aerosols if the use of a fully shielded nozzle is not possible.

### General safety instructions

 **DANGER** • Risk of asphyxiation. Keep packaging film out of the reach of children.

 **WARNING** • Only use the device for its proper use. Take into account the local conditions and beware of third parties, in particular children, when working with the device. • Persons with reduced physical, sensory or mental capabilities and persons lacking experience and knowledge may only use the appliance if they are properly supervised, have been instructed on use of the appliance safely by a person responsible for their safety, and understand the resultant hazards involved. • Children must not operate the device. • Children must be supervised to prevent them from playing with the appliance.

 **CAUTION** • Safety devices are provided for your own protection. Never modify or bypass safety devices.

### Risk of electric shock

**⚠ DANGER** • Only connect protection class I devices to properly earthed power sources. • Only connect the device to alternating current. The voltage indicated on the type plate must match the voltage of the power source. • Only operate the device via a fault current protection switch (maximum 30 mA). • Never touch the mains plug and socket with wet hands. • The mains plug and coupling of the extension cable must be water tight and may not be placed in water. The coupling may not be on the floor. Use cable drums to ensure that the sockets are at least 60 mm above the floor. • All live parts in the work area must be protected against water jets.

**⚠ WARNING** • Only connect the device to an electrical connection which has been set up by a qualified electrician as per IEC 60364-1. • Check that the mains connection cable with mains plug is undamaged each time before using the device. To avoid any possible danger, a damaged mains connection cable must be immediately replaced by the manufacturer, or the authorised customer service department or a qualified electrician. • Do not damage the power supply and extension cable by running over it, crushing or yanking it or similar. Protect the power supply cable from heat, oil and sharp edges. • Unsuitable electrical extension cables are dangerous. Only use approved and appropriately marked electrical extension cables with a sufficient line cross section when outdoors: 1-10 m : 1.5 mm<sup>2</sup>, 10-30 m : 2.5 mm<sup>2</sup>

**⚠ CAUTION** • Always fully unwind the extension cable from the cable drum. • In case of longer breaks in operation and after use, switch off the device at the main switch / device switch and pull the mains plug.

### Operation

**⚠ DANGER** • Operation in explosive atmospheres is prohibited. • Never suction solvents, liquids containing solvents or undiluted acids. This includes e.g. petrol, paint thinner or heating oil. The spray mist is highly flammable, explosive and poisonous. • Damaged wheels / tyre valves are extremely dangerous. Damaged wheels / tyre valves can be damaged by the high-pressure jet and explode. The first sign of this is discolouration of the tyres. Keep a spray distance of at least 30 cm when cleaning the wheels / tyre valves.

**⚠ WARNING** • Do not use the device if people without the proper protective clothing are in its reach. • Do not aim the high-pressure jet at yourself, e.g. to clean clothes or shoes. • Do not direct the high-pressure jet at persons, animals, live electrical equipment or at the device itself. • Do not spray any objects which contain harmful substances (e.g. asbestos). • Check the device and the accessories, such as the high-pressure hose, high-pressure gun and safety devices, to make sure they are in proper safe and reliable condition before each operation. Do not use the device if it is damaged. Replace damaged components immediately. • Only use high-pressure hoses, control panels and couplings specified by the manufacturer. • Risk of scalding. When disconnecting the supply or high-pressure hose, hot water can leak out of the connections after operation.

**⚠ CAUTION** • According to the applicable regulations, the appliance may never be used with the drinking water network without a system separator. Ensure that the connection to your house water system, with which the high-pressure cleaner is operated, is equipped with a system separator according to EN 12729 type BA. • Water that has flowed through a system separator is no longer classified as drinkable. • Never leave the device unsupervised while it is in operation. • Recoil force from the water stream emerging at the high-pressure nozzle acts on the high-pressure gun. Keep proper footing and hold the high-pressure gun and spray lance firmly. • Accidents or damage due to the device falling over. Before all actions with or on the device, you must make sure that it is stable.

**ATTENTION** • Do not operate the device at temperatures below 0 °C.

### Operation with detergent

**⚠ WARNING** • Incorrect use of detergents can cause serious injuries or poisoning.

**⚠ CAUTION** • Keep the detergent out of the reach of children. • Only use the detergents supplied or specified by the manufacturer. The use of other detergents or chemicals can impair the safety of the device.

### Care and service

**⚠ WARNING** • Always pull out the mains plug before all care and maintenance work.

**⚠ CAUTION** • Have repair work and work on electrical components carried out by the authorised customer service only.

**ATTENTION** • Do not use acetone, undiluted acids or solvents, as they corrode the materials used on the device.

### Transportation

#### **⚠ CAUTION**

• Risk of accidents and injuries. Take into account the weight of the device for transportation and storage. See chapter Technical data in the operating instructions.

## Environmental protection



The packing materials can be recycled. Please dispose of packaging in accordance with the environmental regulations.



Electrical and electronic appliances contain valuable, recyclable materials and often components such as batteries, rechargeable batteries or oil,

which - if handled or disposed of incorrectly - can pose a potential danger to human health and the environment. However, these components are required for the correct operation of the appliance. Appliances marked by this symbol are not allowed to be disposed of together with the household rubbish.



Cleaning work producing in oily waste water, e.g. washing engines, washing undercarriages etc., may only be performed at washing stations with an oil separator.



Working with detergents may only be performed on watertight surfaces with connection to the waste water sewage system. Do not allow detergent to enter waterways or the soil.



Extraction of water from public waterways is not permitted in some countries.

### Notes on the content materials (REACH)

Current information on content materials can be found at: [www.kaercher.de/REACH](http://www.kaercher.de/REACH)

## Intended use

Use the high-pressure cleaner in private households only.

The high-pressure cleaner is intended for cleaning machines, vehicles, buildings, tools, façades, terraces, garden machines etc. using a high-pressure water jet.

## Accessories and spare parts

Only use original accessories and original spare parts. They ensure that the appliance will run fault-free and safely.

Information on accessories and spare parts can be found at [www.kaercher.com](http://www.kaercher.com).

## Scope of delivery

The scope of delivery for the appliance is shown on the packaging. Check the contents for completeness when unpacking. If any accessories are missing or in the event of any shipping damage, please notify your dealer.

## Description of the device

The maximum amount of equipment is described in these operating instructions. Depending on the model used, there are differences in the scope of delivery (see packaging).

For the illustrations, refer to the graphics page

### Illustration A

- ① Stand with carrying handle
- ② Water connection with integrated sieve
- ③ Transport wheel
- ④ Visor
- ⑤ Hose guide
- ⑥ Trigger "0/OFF" / "1/ON"
- ⑦ Storage for spray lance
- ⑧ High-pressure hose
- ⑨ \*Plug 'n' Clean detergent bottle
- ⑩ Storage / parking position for high-pressure gun
- ⑪ 3-in-1 multi-jet spray lance with 3 spray types (see also chapter *Smart Control System*)
- ⑫ Smart Control high-pressure gun
- ⑬ LCD display (see also chapter *LCD display*)
- ⑭ Battery compartment lock
- ⑮ Battery compartment
- ⑯ "+/-" buttons for pressure control
- ⑰ High-pressure gun lock
- ⑱ Button for separating the high-pressure hose from the high-pressure gun
- ⑲ High-pressure gun lever
- ⑳ Transport handle, telescoping
- ㉑ Carrying handle
- ㉒ High pressure hose reel
- ㉓ Crank handle for hose reel
- ㉔ Type plate
- ㉕ Accessory compartment
- ㉖ Hook for net attachment
- ㉗ Accessory compartment net
- ㉘ Mains connection with mains plug
- ㉙ Supplied screws and dowels
- ㉚ Water connection coupling
- ㉛ \*\*Garden hose (fabric reinforced, diameter at least 1/2 inch (13 mm), length at least 7.5 m, with commercially available quick coupling)
- ㉜ \*\*KÄRCHER suction hose for water supply from open containers (order no. 2.643-100.0)
- ㉝ \*Foam nozzle with detergent container  
The detergent is sucked out of the container to produce a strong detergent foam.
- ㉞ Washing brush (e.g. for washing cars)

\* optional, \*\* additionally required



## LCD display

### Illustration B

- 1 Area of application (1-SOFT / 2-MEDIUM / 3-HARD with 2 pressure levels each)
- 2 BOOST function indicator
- 3 Spray type recommendation (flat stream/detergent/dirt grinder)
- 4 Display Bluetooth®connection
- 5 Signal strength status (four levels)
- 6 Battery status (empty, almost empty, medium, full)
- 7 Detergent level (1 / 2 / 3)

## Supplied screws and dowels

### Illustration C

- 1 Stand dowels (2 pieces)
- 2 Screw M 4x20 (2 pieces)
- 3 Screw M 4x22 (2 pieces)
- 4 Screw M 4x16 (8 pieces)

## Safety devices

### ⚠ CAUTION

#### Missing or modified safety devices

Safety devices are provided for your own protection. Never modify or bypass safety devices.

### Power switch

The power switch prevents unintentional operation of the device.

### High-pressure gun lock

The lock locks the lever of the high-pressure gun and prevents the device from starting unintentionally.

### Auto-stop function

If the lever of the high-pressure gun is released, the pressure switch turns off the pump and the high-pressure jet stops. The pump switches on again when the lever is pressed.

### Motor circuit breaker

The motor circuit breaker shuts off the device if power consumption is too high.

## Symbols on the device



Do not aim the high-pressure jet at persons, animals, live electrical equipment or the device itself.

Protect the device against frost.

The device may not be connected to the public drinking water network.



## Assembly

### For the illustrations, refer to the graphics page.

Place the screws provided and matching screwdriver at the ready.

Fit the supplied loose parts onto the device before starting up the device.

### Fitting the wheels

1. Insert the wheels.

#### Note

Pay attention to the alignment of the hole.

#### Illustration D

2. Secure the wheels with 1 screw each.

### Mounting the stand

1. Insert the stand.

#### Illustration E

2. Insert the 2 dowels into the holes as far as they will go.

3. Secure the base with 2 screws.

### Installing the spray lance storage

1. Hang the spray lance storage in position.

2. Secure the storage with 2 screws.

#### Illustration F

3. Secure the cover with 4 screws.

#### Illustration G

### Mounting the transport handle

1. Attach the transport handle.

#### Illustration H

2. Secure the transport handle with 2 screws.

### Mounting the accessory net

1. Hang the accessory net on the hooks.

#### Illustration I

### Push the high-pressure hose through the hose guide

1. Insert the high-pressure hose through the hose guide from the rear.

#### Illustration J

### Installing the water connection coupling

1. Screw the water connection coupling onto the water connection on the device.

#### Illustration K

## Initial Start-Up

### Note

If you do not want to control the device by mobile device via a Bluetooth® connection, you only have to follow the steps in the section "Connecting the high-pressure gun".

### Download the app and register your device

1. Download the KÄRCHER Home & Garden app (see chapter *KÄRCHER Home & Garden app*).
2. Start the KÄRCHER Home & Garden app.
3. Log in to the KÄRCHER Home & Garden app. If necessary, create an account for this.
4. Scan the enclosed QR code.

The high-pressure cleaner is registered.

### Note

If you do not have the enclosed QR code at hand, you can also register the device with the part number and serial number. Both numbers are given on the type plate.

5. Follow the instructions of the KÄRCHER Home & Garden app.

### Note

Be sure to do this before connecting the high-pressure gun Bluetooth®. Activate on your mobile device.

### Connecting the high-pressure gun

#### Note

You can find a detailed description of the connection at <https://www.kaercher.com/FCR>.

6. Plug the mains plug for the high-pressure cleaner into a socket.  
The device switches to coupling mode for 60 s. During this time it is possible to couple the high-pressure gun.
7. Press the "+" key and the "-" key on the high-pressure gun simultaneously for at least 3 s.  
If the coupling is successful, the pressure levels, as well as the radio and the Bluetooth® symbol, will be shown on the display.

#### Illustration L

The Bluetooth® connection between the mobile device and the high-pressure cleaner is established automatically.

### Note

If necessary, you can also establish the Bluetooth® connection at a later time by pressing the "-" key for 10 s.

8. If the coupling attempt failed:
  - a Pull the mains plug for the high-pressure cleaner out of the socket.
  - b Wait 20 s.
  - c Couple the high-pressure gun again.

## Startup

1. Place the device on a flat and level surface.
2. **For devices with a hose reel:** Completely unwind the high-pressure hose from the hose reel.
3. **For devices without a hose reel:** Unwind the high-pressure hose completely and eliminate any loops and twists.
4. Pull the high-pressure hose all the way forwards through the hose guide.
5. Insert the high-pressure hose into the high-pressure gun until it audibly latches into place.

### Note

Take care to ensure the correct alignment of the nipple.

#### Illustration M

6. Check for a secure connection by pulling on the high-pressure hose.
7. Plug the mains plug into a mains socket.

## Water supply

For the connection values, see the type plate or chapter *Technical data*.

Observe the water distribution company regulations.

## ATTENTION

### Damage through contaminated water

Contamination in the water can damage the pump and the accessories.

KÄRCHER recommends using the KÄRCHER water filter for protection (special accessory, order number 4.730-059).

## Connection to the water line

## ATTENTION

### Hose coupling with Aquastop on the water connection of the device

Damage to the pump

Never use a hose coupling with Aquastop on the water connection of the device.

You can use an Aquastop coupling on the tap.

1. Plug the garden hose onto the water connection coupling.
2. Connect the garden hose to the water line.
3. Open the water tap fully.

#### Illustration N

## Sucking water from open containers

When used with the KÄRCHER suction hose with check valve (special accessory, order number 2.643-100) this high-pressure cleaner is suitable for sucking up surface water, e.g. from rain barrels or ponds (for the maximum suction height see chapter *Technical data*).

The water connection coupling is not required for vacuuming operation.

1. Fill the suction hose with water.
2. Screw the suction hose onto the device water connection and hang it in a water source (e.g. water butt).

## Vent the device

1. Switch the device on "I/ON".
2. Unlock the lever of the high-pressure gun.
3. Press the lever of the high-pressure gun.  
The device switches on.
4. Allow the device for run a maximum of 2 minutes until the water escaping from the high-pressure gun is free of air bubbles.
5. Release the lever of the high-pressure gun.
6. Lock the lever of the high-pressure gun.

## Operation

### ATTENTION

#### Pump running dry

Damage to the device


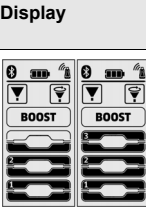

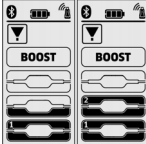

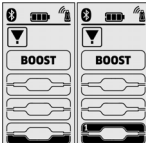
If pressure does not build up in the device after 2 minutes then switch the device off and proceed according to the instructions in chapter Troubleshooting guide.


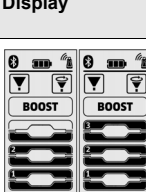
### Smart Control System


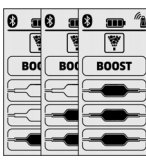
The "+/-" buttons on the high-pressure gun can be used to select the pressure and detergent dosing levels. The spray type can be changed by turning the 3-in-1 multi jet spray lance.

#### Note

The sensitivity of materials can vary greatly depending on age and condition. The recommendations are therefore not binding.

Flat jet nozzle		
Pressure level	Display	Recommended for e.g.
		Stone terraces, asphalt, metal surfaces, garden utensils (wheelbarrow, spade, etc.)
		Cars / motorcycles, brick surfaces, plastered walls, plastic furniture
		Wooden surfaces, bicycle, sandstone surfaces, rattan furniture

Dirt grinder		
Pressure level	Display	Recommended for e.g.
		For particularly stubborn dirt on stone terraces, asphalt, metal surfaces, garden utensils (wheelbarrow, spade, etc.)

Detergent nozzle		
Pressure level	Display	Recommended for e.g.
		Operation with detergent. Dosing the detergent concentration as needed

### High-pressure operation

### ATTENTION

#### Damage to painted or sensitive surfaces

Surfaces can be damaged when the jet is too close to the surface or an unsuitable spray lance is used. Maintain a minimum spray distance of 30 cm when cleaning painted surfaces.

Do not clean car tyres, paint or sensitive surfaces such as wood with the dirt grinder.

1. Insert the 3-in-1 Multi Jet spray lance and turn it 90° to fix it in place. Be aware of the orientation!

#### Illustration O

### ATTENTION

#### Spray type change when the lever of the high-pressure gun is pressed

Damage to the spray lance

Let go of the lever of the high-pressure gun before changing the spray type.

2. Select the spray type. Do this by turning the 3-in-1 Multi Jet spray lance until the required spray display is visible above.

#### Illustration P

3. Switch the device on ("I/ON").
4. Unlock the lever of the high-pressure gun.
5. Press the lever of the high-pressure gun. The device switches on.

### Activating the BOOST function

For cleaning stubborn dirt, the BOOST function can be activated for 30 seconds regardless of the pressure level set. This increases the water pressure.

1. Hold down the "+" button on the high-pressure gun until BOOST is highlighted on the LCD display.

#### Illustration Q

After the BOOST function has expired, the device works with the previously set pressure level.

As soon as the display stops flashing, the BOOST function is available again.

### Operation with a washing brush

### ATTENTION

#### Paint damage

Damage to surfaces through a dirty brush

Ensure that the washing brush is free from dirt or other particles before using it.

#### Note

The device operates at low pressure when using washing brushes. This means that detergent can be mixed with the water.

1. Insert the washing brush into the high-pressure gun and turn by 90° to fasten it.

## Operation with detergent

### **⚠ DANGER**

#### **Failure to adhere to the safety data sheet**

*Incorrect handling of the detergent can seriously damage your health*

*Observe the safety data sheet of the detergent manufacturer, in particular the instructions on personal protective equipment.*

#### **Note**

*A Plug 'n' Clean detergent bottle is required for operating with detergent. KÄRCHER detergent can be purchased ready to use in a Plug 'n' Clean detergent bottle.*

1. Remove the cover from the Plug 'n' Clean detergent bottle.
2. Plug the detergent bottle into the Plug 'n' Clean detergent connection with the opening facing down.

#### **Illustration R**

3. Turn the 3-in-1 Multi Jet spray lance to the "MIX" cleaning nozzle until the "MIX" LCD on the pressure indicator of the high-pressure gun lights up.

The detergent solution is mixed with the water jet during operation.

4. Using the "+/-" buttons of the high-pressure gun, set the desired detergent concentration.
5. You can optionally use the foam nozzle.
  - a. Fill the detergent solution into the detergent tank. Adhere to the dosage specifications on the detergent container.
  - b. Connect the foam nozzle to the detergent container.
  - c. Insert the foam nozzle into the high-pressure gun and turn by 90° to fasten it.

#### **Illustration S**

### **Recommended cleaning method**

1. Spray the detergent sparingly on the dry surface and let it work for a while (do not let it dry).
2. Rinse off the loosened dirt with the high-pressure jet.

### **After operation with detergent**

1. Pull the Plug 'n' Clean detergent bottle out of the mount and close it with the cap before transporting the device lying down.
2. Store the detergent bottle in the holder with the lid facing up.
3. Operate the device for about 30 seconds at detergent level 1 to rinse it clean.

### **Interrupting operation**

1. Release the lever of the high-pressure gun. The device switches off when the lever is released. The high pressure in the system is retained.
2. Lock the lever of the high-pressure gun.

#### **Illustration T**

3. Place the high-pressure gun with the spray lance in the parking position.
4. Switch the device off "0/OFF" during work breaks longer than 5 minutes.

## Ending operation

### **⚠ CAUTION**

#### **Pressure in the system**

*Injuries from high-pressure water escaping uncontrollably. Only disconnect the high-pressure hose from the high-pressure gun or the device when the system is fully depressurised.*

1. Release the lever of the high-pressure gun.
2. Close the water tap.
3. Press the lever of the high-pressure gun for 30 seconds.

The pressure remaining in the system is discharged.

4. Release the lever of the high-pressure gun.
5. Lock the lever of the high-pressure gun.
6. Disconnect the device from the water supply.
7. Switch off the device "0/OFF".
8. Pull the mains plug out of the socket.

## Transport

### **⚠ CAUTION**

#### **Failure to observe the weight**

*Risk of injury and damage*

*Be aware of the weight of the device during transportation.*

### **Carrying the device**

1. Lift and carry the device by the carrying handles.

### **Pulling the device**

1. Pull the transport handle out until it audibly latches into place.
2. Pull the device via the transport handle.

### **Transporting the device in a vehicle**

1. Before transporting lying down, pull the Plug 'n' Clean detergent bottle out of the mount and close it with the cap.
2. Secure the device against slipping and tipping over.

## Storage

### **⚠ CAUTION**

**Failure to observe the weight**

*Risk of injury and damage*

*Be aware of the weight of the device during storage.*

#### **Storing the device**

1. Place the device on a level surface.
2. Disconnect the spray lance from the high-pressure gun.
3. Press the separation button on the high-pressure gun and disconnect the high-pressure hose from the high-pressure gun.

### **ATTENTION**

**Damage to the high-pressure hose**

*Damage to the high-pressure hose through incorrect direction of rotation*

*Observe the correct direction of rotation of the hose reel when winding on the hose.*

4. For devices with a hose reel: Use the crank handle to turn the hose reel anticlockwise and coil up the high-pressure hose.
5. For devices without a hose reel: Store the high-pressure hose on the device.
6. Store the mains connection cable and accessories on the device.

Observe the additional instructions before storing the device for a longer period of time, see chapter *Care and service*.

#### **Frost protection**

### **ATTENTION**

**Danger of frost**

*Incompletely emptied devices can be destroyed by frost.*

*Completely empty the device and accessories.*

*Protect the device from frost.*

The following requirements must be satisfied:

- The device is disconnected from the water supply.
  - The high-pressure gun is disconnected from the high-pressure hose.
1. Switch the device on "I/ON".
  2. Wait for a maximum of 1 minute until no more water escapes from the high-pressure hose.
  3. Switch off the device.
  4. Store the device in a frost-protected room, together with all accessories.

## Care and service

### **⚠ DANGER**

**Danger of electric shock**

*Injuries due to touching live parts*

*Switch off the device.*

*Remove the mains plug.*

The device is maintenance-free, i.e. you do not need to perform any maintenance work.

#### **Clean the sieve in the water connection**

### **ATTENTION**

**Damaged sieve in the water connection**

*Damage to the device through contaminated water*

*Check the sieve for damage before inserting it in the water connection.*

If necessary, clean the sieve in the water connection.

1. Remove the water connection coupling.
2. Pull the sieve out using flat pliers.
3. Clean the sieve under running water.

#### **Illustration U**

4. Insert the sieve into the water connection.

#### **Replacing the batteries of the high-pressure gun**

Two non-rechargeable or rechargeable AAA batteries are required.

The batteries are exhausted if nothing or a flashing battery symbol is visible in the display of the high-pressure gun.

#### **Illustration V**

1. Press the locking slide.

#### **Illustration W**

2. Open the battery compartment.
3. Remove the battery.
4. Insert new batteries, while paying attention to the correct alignment of the poles.
5. Close the battery compartment.
6. Dispose of the used batteries in accordance with statutory provisions.

## Troubleshooting guide

Malfunctions often have simple causes that you can remedy yourself using the following overview. When in doubt, or in the case of malfunctions not mentioned here, please contact your authorised Customer Service.

### **⚠ DANGER**

#### **Danger of electric shock**

*Injuries due to touching live parts*

*Switch off the device.*

*Remove the mains plug.*

#### **Device not running**

1. Press the lever of the high-pressure gun.  
The device switches on.
2. Check that the voltage specified on the type plate corresponds to the voltage of the power source.
3. Check the mains connection cable for damage.
4. If the motor is overloaded and the motor circuit breaker has triggered:
  - a Switch off the device "0/OFF".
  - b Allow the device to cool down for 1 hour.
  - c Switch the device on "I/ON" and resume operation.Have the device checked by Customer Service if this fault occurs repeatedly.

#### **The device does not start up, the motor buzzes**

Voltage drop due to a weak mains grid or when using an extension cable

1. When switching on, first press the lever on the high-pressure gun and then switch on the device "I/ON".

#### **Device does not reach required pressure**

The water supply is too low

1. Open the water tap fully.
2. Check the water inlet for an adequate flow rate.

The sieve in the water connection is dirty.

1. Pull the sieve in the water connection out using flat pliers.
2. Clean the sieve under running water.

Air is in the device.

1. Vent the device:
  - a Switch on the device without a connected spray lance for a maximum of 2 minutes.
  - b Press the high-pressure gun and wait until the water escaping from the high-pressure gun is free of air bubbles.
  - c Connect the spray lance.
  - d Observe the maximum suction height during suction operation (see chapter *Technical data*).

#### **Strong pressure fluctuations**

1. Clean the high-pressure nozzle:
  - a Use a needle to remove dirt from the nozzle drill.
  - b Rinse the high-pressure nozzle from the front with water.
2. Check the water supply volume.

#### **Device leaking**

1. The device leaks a small amount for technical reasons. If the leak is severe, request authorised Customer Service.

#### **Detergent is not sucked in**

1. Turn the 3-in-1 Multi Jet spray lance to detergent nozzle "MIX".
2. Check that the Plug 'n' Clean detergent bottle is sitting correctly with the opening facing down in the detergent connection.

#### **No pressure indicator on the high-pressure gun**

##### **Illustration X**

1. Re-establish the connection to the high-pressure cleaner, see chapter *Initial Start-Up*.

#### **BOOST function is not shown on the display and cannot be started via the KÄRCHER Home & Garden app**

The device is overheated.

1. Check the water supply temperature (for maximum water inlet temperature, see chapter *Technical data*).
2. Reduce the water supply temperature to give the motor more cooling.

#### **Error messages**

##### **Illustration Y**

1. Switch off the device "0/OFF".
2. Pull the mains plug out of the socket.
3. After 20 seconds, insert the mains plug back into the socket.
4. Switch the device on "I/ON".  
Have the device checked by Customer Service if this fault occurs repeatedly.

#### **Emergency operation**

If the pressure regulation on the high-pressure gun is defective, the high-pressure cleaner works at maximum level.

1. Deactivating emergency operation:

- a Switch off the device "0/OFF".
- b Pull the mains plug out of the socket.
- c After 20 seconds, insert the mains plug back into the socket.
- d Switch the device on "I/ON".  
Have the device checked by Customer Service if this fault occurs repeatedly.

#### **The high-pressure gun is not working properly**

##### **Illustration Z**

An internal error has occurred in the electronics of the high-pressure gun.

1. Press the locking slide.

##### **Illustration W**

2. Open the battery compartment.
3. Remove the battery.
4. Insert the batteries, paying attention to the correct alignment of the poles.
5. Close the battery compartment.  
Have the high-pressure gun checked by Customer Service if this fault occurs repeatedly.

## Warranty

The warranty conditions issued by our relevant sales company apply in all countries. We shall remedy possible malfunctions on your appliance within the warranty period free of cost, provided that a material or manufacturing defect is the cause. In a warranty case, please contact your dealer (with the purchase receipt) or the next authorised customer service site. (See overleaf for the address)

## Technical data

### Electrical connection

Voltage	V	230-240
Phase	~	1
Frequency	Hz	50
Power rating	kW	2,1
Degree of protection		IPX5
Protection class		I
Power protection (slow-blowing)	A	10

### Water connection

Feed pressure (max.)	MPa	1,2
Input temperature (max.)	°C	40
Input amount (min.)	l/min	10
Suction height (max.)	m	0,5

### Device performance data

Operating pressure	MPa	12
Max. permissible pressure	MPa psi	16 2300
Water flow rate	l/min	6,8
Maximum flow rate	l/min	8,3
Detergent flow rate	l/min	0,3
High-pressure gun recoil force	N	18

### Dimensions and weights

Typical operating weight	kg	15,8
Length	mm	414
Width	mm	306
Height	mm	588

### Radio module SRD

Frequency	MHz	868,7- 869,2
Transmitting power ERP	mW	0,53

### Bluetooth radio module

Frequency	GHz	2,45
Transmitting power ERP	mW	6,3

Subject to technical modifications.



**THANK YOU!**  
**MERCI! DANKE! ¡GRACIAS!**



Registrieren Sie Ihr Produkt und profitieren Sie von vielen Vorteilen.

Register your product and benefit from many advantages.

Enregistrez votre produit et bénéficiez de nombreux avantages.

Registre su producto y aproveche de muchas ventajas.

**[www.kaercher.com/welcome](http://www.kaercher.com/welcome)**

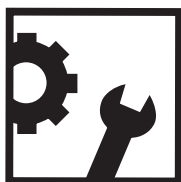


Bewerten Sie Ihr Produkt und sagen Sie uns Ihre Meinung.

Rate your product and tell us your opinion.

Évaluer votre produit et dites-nous votre opinion.

Reseñe su producto y díganos su opinión.



**[www.kaercher.com/dealersearch](http://www.kaercher.com/dealersearch)**

**Alfred Kärcher SE & Co. KG**

Alfred-Kärcher-Str. 28-40

71364 Winnenden (Germany)

Tel.: +49 7195 14-0

Fax: +49 7195 14-2212

