

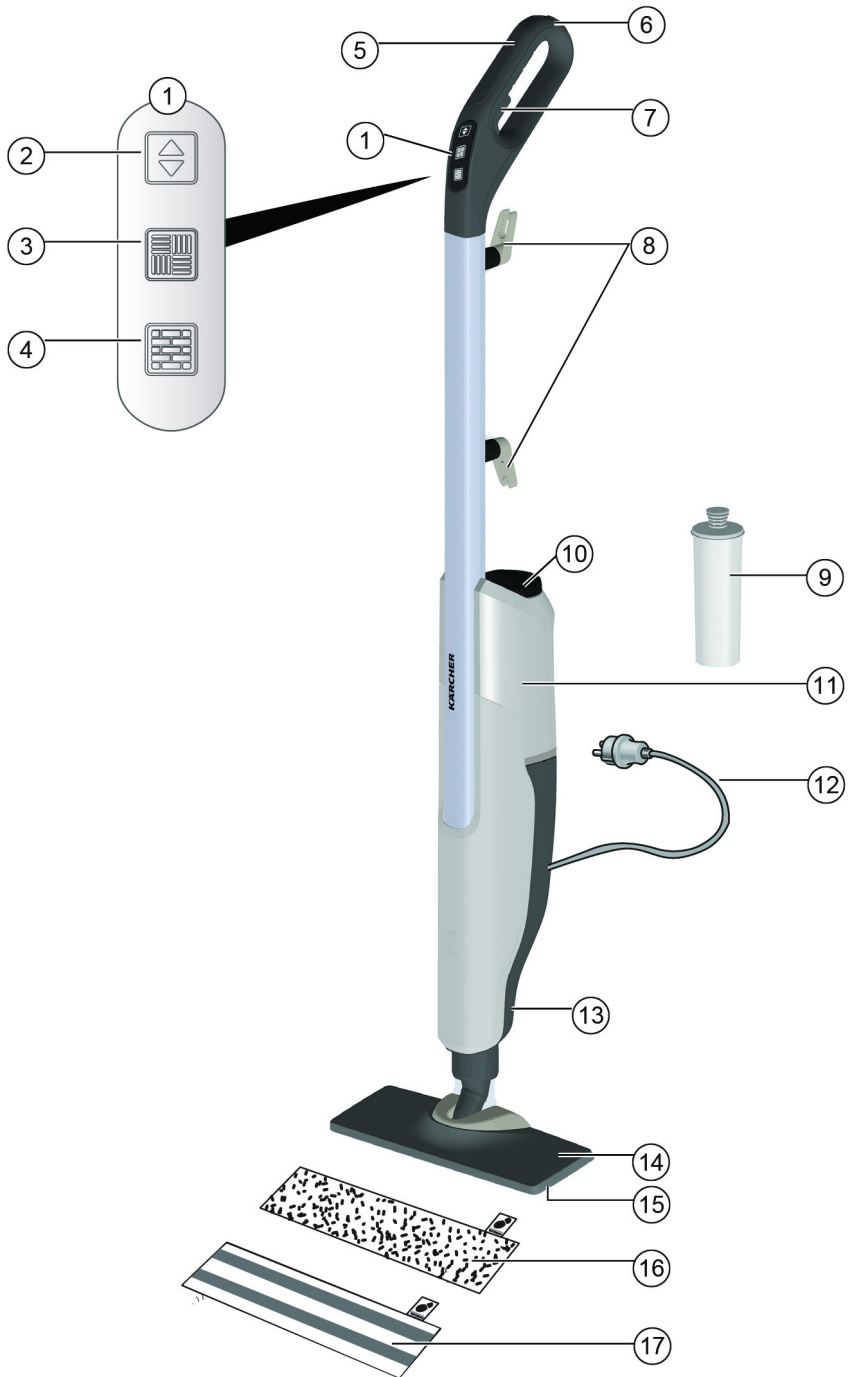
SC 2 Upright EasyFix

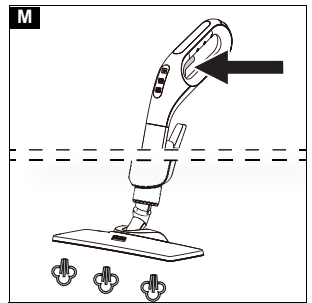
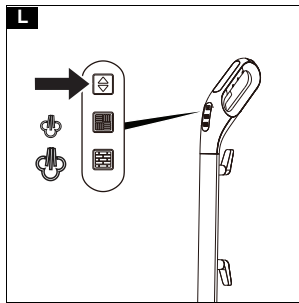
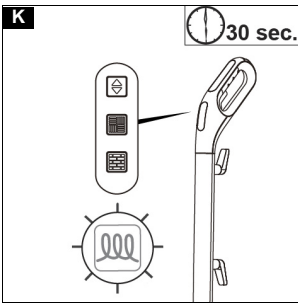
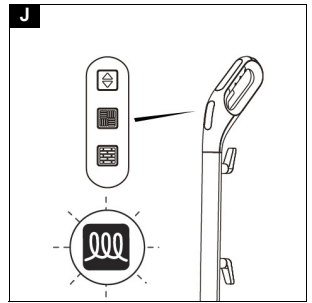
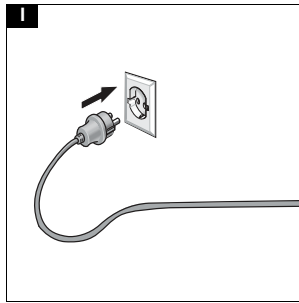
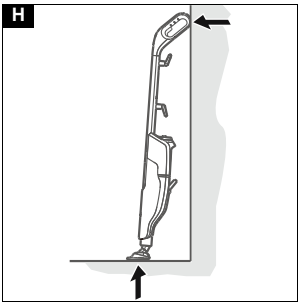
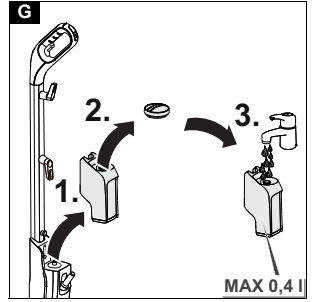
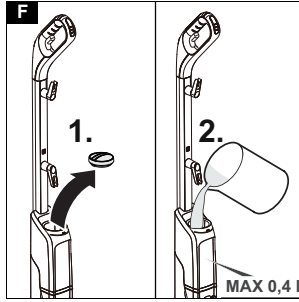
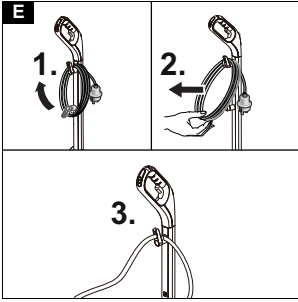
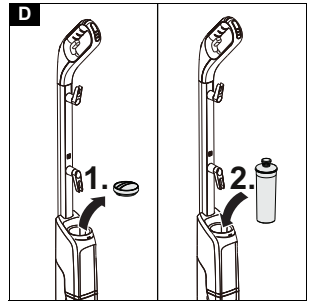
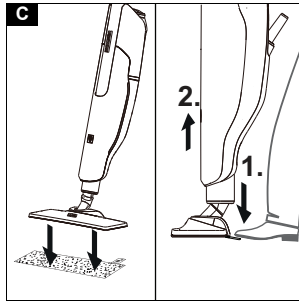
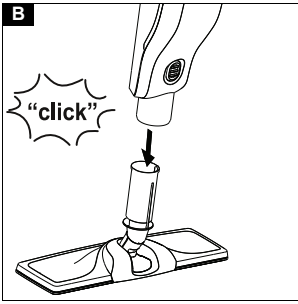


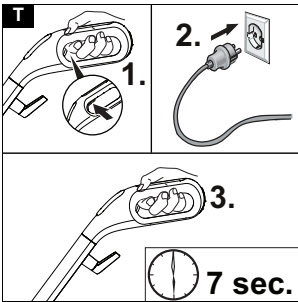
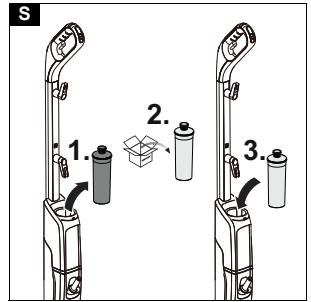
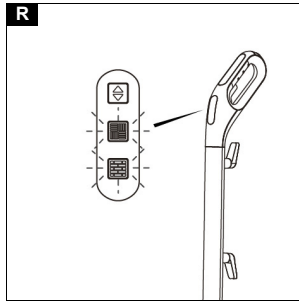
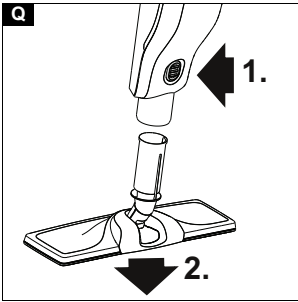
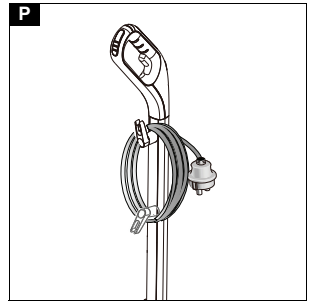
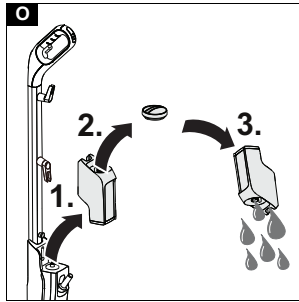
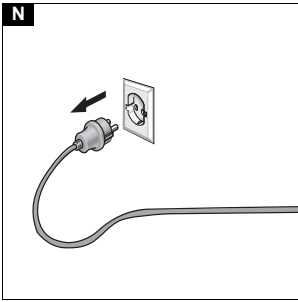
**Register
your product**
www.kaercher.com/welcome



97695370 (08/21)







Contents

Intended use.....	5
Environmental protection.....	5
Accessories and spare parts.....	5
Scope of delivery.....	5
Safety instructions SC 2 Upright.....	5
For upright machines.....	6
Safety devices.....	7
Description of the device.....	7
Installation.....	8
Initial Start-Up.....	8
Operation.....	8
Important application instructions.....	9
How to use the Accessories.....	9
Care and service.....	10
Troubleshooting guide.....	11
Warranty.....	11
Technical data.....	11

Intended use

Use the device only in private households for cleaning level hard floors (e.g. stone floors, tiles, PVC floors, as well as sealed wooden floors such as parquet and laminate) that can withstand the high temperature, pressure and moisture of the device. Do not clean any water-sensitive coverings such as untreated cork floors (moisture can penetrate and damage the floor). Cleaning agents are not required.

Environmental protection



The packing materials can be recycled. Please dispose of packaging in accordance with the environmental regulations.



Electrical and electronic appliances contain valuable, recyclable materials and often components such as batteries, rechargeable batteries or oil, which - if handled or disposed of incorrectly - can pose a potential threat to human health and the environment. However, these components are required for the correct operation of the appliance. Appliances marked by this symbol are not allowed to be disposed of together with the household rubbish.

Notes on the content materials (REACH)

Current information on content materials can be found at: www.kaercher.com/REACH

Accessories and spare parts

Only use original accessories and original spare parts. They ensure that the appliance will run fault-free and safely.

Information on accessories and spare parts can be found at www.kaercher.com.

Scope of delivery

The scope of delivery for the appliance is shown on the packaging. Check the contents for completeness when unpacking. If any accessories are missing or in the event of any shipping damage, please notify your dealer.

Safety instructions SC 2 Upright



Read these safety instructions and the original instructions before using the device for the first time. Act in accordance

with them. Keep the two booklets for future reference or for future owners.

- In addition to the notes in the operating instructions, you also need to take into consideration the general safety regulations and accident prevention guidelines applicable by law.
- Warnings and information notices attached to the device provide important information for hazard-free operation.

Hazard levels

DANGER

- Indication of an imminent threat of danger that will lead to severe injuries or even death.

WARNING

- Indication of a potentially dangerous situation that may lead to severe injuries or even death.

CAUTION

- Indication of a potentially dangerous situation that may lead to minor injuries.

ATTENTION

- Indication of a potentially dangerous situation that may lead to damage to property.

General safety instructions

DANGER • Risk of asphyxiation. Keep packaging film out of the reach of children.

WARNING • Only use the device for its proper use. Take into account the local conditions and beware of third parties, in particular children, when working with the device. • Only people who have been instructed on how to use the device, or have proven their ability to operate it, and have been explicitly instructed to use it, must use the device. • Persons with reduced physical, sensory or mental capabilities and persons lacking experience and knowledge may only use the appliance if they are properly supervised, have been instructed on use of the appliance safely by a person responsible for their safety, and understand the resultant hazards involved. • Children must not operate the device. • Children must be supervised to prevent them from playing with the appliance. • Keep the device out of the reach of children when it is connected to the mains or when it is cooling down.

CAUTION • Do not use the device if it has been dropped beforehand, is visibly damaged or if it is leaking. • Safety devices are provided for your own protection. Never modify or bypass safety devices.

Risk of electric shock

DANGER • Never touch the mains plug and socket with wet hands. • Only connect the device to alternating current. The voltage indicated on the type plate must match the voltage of the power source. • Do not direct the steam jet directly onto equipment containing electrical components, e.g. the interior space of ovens. • Do not fill the devices with removable water reservoir directly via the water connection while they are connected to the mains power. Use a receptacle for filling. • Do not use the d in swimming pools which contain water. • The mains plug and extension cable connection must not be in water. • Do not clean over floor sockets.

WARNING • Only connect the device to an electrical connection which has been set up by a quali-

fied electrician as per IEC 60364-1. ● Only operate the device in wet rooms, e.g. bathroom, connected to sockets with upstream residual current device. ● Check that the mains connection cable with mains plug is undamaged each time before using the device. To avoid any possible danger, a damaged mains connection cable must be immediately replaced by the manufacturer, or the authorised customer service department or a qualified electrician. ● Do not damage the power supply and extension cable by running over it, crushing or yanking it or similar. Protect the power supply cable from heat, oil and sharp edges. ● Unsuitable electrical extension cables can be dangerous. Only use electrical extension cables with a splash guard and a diameter of at least 3x1 mm². ● Only replace couplings on the power supply or extension cable with those with the same splash guard and the same mechanical strength. ● Clean tiled walls with sockets carefully. ● Disconnect the device from the mains during longer operating breaks, after use or before performing any maintenance work. ● Only carry out servicing work when the mains plug is pulled and the steam cleaner has cooled down.

Operation

⚠ DANGER ● Operation in explosive atmospheres is prohibited. ● When using the device in hazard zones (e.g. service stations), adhere to the respective safety regulations.

⚠ WARNING ● Risk of scalding. Never touch the steam jet with your hand from a close distance, and do not direct it at people or animals. ● Danger of scalding from high water output if you tilt the device more than 30° to the side during use. Only affects SC 1 devices ● Risk of scalding on the hot steam boiler. Allow the steam boiler to cool down before filling it with water. Does not apply to SC 3 / SC 3 Upright devices ● Risk of scalding. Let the appliance and accessory parts, particularly the floor cleaning cloth and the hand cover cool down before touching them. ● Risk of scalding. Do not use the appliance for cleaning pressure tanks as this poses a bursting and explosion hazard. ● Risk of scalding from the floor nozzle. Ensure that no part of the body gets under the floor nozzle. Never operated the floor nozzle without wearing shoes. ● Risk of scalding. Only operate the appliance once it is fully assembled and functional. ● Risk of scalding. Let the appliance cool down fully before putting it away.

⚠ ATTENTION ● Do not fill with any cleaning agents or other supplements. **WARNING** ● Never disconnect accessories from the device while steam is being expelled. ● Hot water may drip out when disconnecting accessory parts. Allow the device to cool down first. ● Never open the maintenance / safety lock during operation. Allow the device to cool down first. ● Do not clamp the steam lever / steam key during operation. ● Replace a damaged steam hose immediately with a steam hose as recommended by the manufacturer. ● Do not steam any objects which contain harmful substances (e.g. asbestos).

⚠ CAUTION ● Only operate or store the device in accordance with the description or figure. ● Check the device and the accessories, in particular the power supply cable, safety lock and steam hose, to make sure it is in proper safe and reliable condition before operation each time. Do not use the device if it is damaged. Replace damaged components immediately. ● Only switch on the device when water is present in the steam boiler. The device may otherwise overheat, see the

Troubleshooting chapter of the operating instructions. ● Accidents or damage due to the device falling over. Before all actions with or on the device, you must make sure that it is stable.

ATTENTION ● Do not operate the device at temperatures below 0 °C. ● Never leave the device unsupervised while it is connected to the mains. ● Do not use the appliance as a humidifier or heater. ● Ensure the room is well ventilated when working with the appliance and afterwards. ● Protect the device from rain. Do not store the device outdoors. ● Device damage. Never pour solvents, liquids containing solvents or undiluted acids (e.g. detergents, petrol, paint thinner and acetone) into the boiler/water reservoir. ● Unsuitable water can block the nozzles or damage the water level indicator. Do not fill with condensate water from a dryer, collected rainwater, detergents or additives (e.g. scents). Fill the water reservoir with a maximum of 1 l / 0,5 l of tap water. Applies to SC 3 / SC 3 Upright devices only ● Unsuitable water can block the nozzles or damage the water level indicator. Do not fill with pure distilled water, condensation from a dryer, collected rain water, detergents or additives (e.g. fragrances), use a maximum of 50% distilled water mixed with tap water.

- Remove the water reservoir for filling
 - a Pull the water reservoir vertically in an upward direction
 - b Fill the water reservoir vertically with tap water or a mixture of tap water and a maximum of 50% distilled water up to the "MAX" marking.
 - c Insert the water reservoir and press down until it clicks into place.
- Fill the water reservoir directly at the device
 - a Fill tap water or a mixture of tap water and a maximum of 50% distilled water up to the "MAX" marking in the filling hole for the water reservoir.

Applies only to SC 4 and SC 5 devices

Note ● Refilling water

- 1 Switch off the device.
- 2 Allow the device to cool down.
- 3 Unscrew the safety lock.
- 4 Drain the water completely out of the steam boiler.
- 5 Fill a maximum of 200 ml distilled water or tap water into the steam boiler.
- 6 Insert the safety lock.

Applies only to SC 1 devices ● Refilling water

- 1 Switch off the appliance.
- 2 Allow the appliance to cool down.
- 3 Unscrew the safety lock.
- 4 Drain the water completely out of the steam boiler.
- 5 Fill a maximum of 1 l distilled water or tap water into the steam boiler.
- 6 Insert the safety lock.

Applies only to SC 2 devices

For upright machines

⚠ WARNING ● Risk of scalding. Only operate the appliance on even, horizontal surfaces. Do not lay the appliance on its side during operation. Do not use the appliance above head height or horizontally e.g. to clean walls, work surfaces or windows. Applies to SC 3 Upright only

⚠ CAUTION ● In order to guarantee stability, place the device on a firm, flat surface. ● Do not carry the device when performing cleaning work.

Care and service

⚠ CAUTION • Have repair work carried out by the authorised customer service only.

Descaling the steam boiler

Does not apply to SC 3/SC 3 upright devices

⚠ CAUTION • Never screw the safety lock onto the device while descaling. • Do not use the steam cleaner while there is descaler in the boiler.

ATTENTION • The descaler may corrode sensitive surfaces. Work carefully when filling and emptying the steam cleaner with descaler.

ATTENTION • Do not use vinegar or similar agents.

Steam cleaner accessories

(Depending on equipment)

Iron

⚠ WARNING • Risk of scalding. Do not direct the steam jet at people or animals. • Risk of burns on hot steam pressure iron and hot steam jet. Alert other people to the hazard. • Do not touch any electrical cables or combustible objects with the hot steam pressure iron. • Have the damaged mains cable replaced immediately by an authorized customer service/qualified electrician. • Children over the age of 8 and persons with reduced physical, sensory or mental capabilities, or those with a lack of experience and knowledge, are only allowed to use the appliance if they are properly supervised, have been instructed with respect to using the appliance safely by a person responsible for their safety, and understand the resultant dangers involved. • Children must not play with the appliance. • Children may only perform cleaning work and user maintenance under supervision.

⚠ CAUTION • Do not use the steam pressure iron if it has been dropped, has visible damage or is leaking. • Do not leave the steam pressure iron unattended while it is connected to the mains. • Before the water reservoir (of the steam cleaner) is filled with water, the mains plug must be pulled out of the socket. • You must only operate or set down the steam pressure iron on a stable surface. • When placing the steam pressure iron on its stand, make sure that the stand is stable. • Repair work on the device may only be carried out by authorized customer service.

Steam turbo brush

⚠ CAUTION

• Longer periods of use of the steam turbo brush may lead to poor blood circulation in the hands due to vibration. In case of symptoms, e.g. tingling in the fingers, cold fingers, take a break. A general period of use cannot be set, because this depends on several influencing factors:

- Personal tendency to suffer from poor circulation (frequently cold fingers, tingling sensation in the fingers).
- Holding the device too tightly hindering blood circulation.
- Continuous operation is more harmful than operation interrupted by work breaks.

You should consult a doctor if using the steam turbo brush regularly and for lengthy periods of time, and in the event of repeated occurrences of symptoms such as tingling in the fingers or cold fingers.




Safety devices

⚠ CAUTION

Missing or modified safety devices
Safety devices are provided for your own protection. Never modify or bypass safety devices.

Symbols on the device

(according to type of appliance)

	Risk of burns, surface of appliance becomes hot during operation
	Risk of scalding from steam
	Read operating instructions

Safety valve

In the case of excessively high pressure in the event of a fault, a safety valve relieves the pressure into the atmosphere.

Fuse

The fuse prevents the device from overheating. If the device overheats, the fuse disconnects the device from the power supply.

Before re-commissioning the device, contact the responsible KÄRCHER Customer Service.

Description of the device

The maximum amount of equipment is described in these operating instructions. Depending on the model used, there are differences in the scope of delivery (see packaging).

For the illustrations, see graphics page.

Illustration A

- ① Display for steam stage setting
- ② Button for steam stage setting
- ③ SC 2 Upright indicator light: Steam stage 1 - wood
Flashes red alternately - mains voltage present and device is heating up
Lights up green continuously - device is operable
Flashes red quickly - indicates that the decalcification cartridge needs to be replaced. To replace the decalcification cartridge, see chapter *Replacing the decalcification cartridge*.
- ④ SC 2 Upright indicator light: Steam stage 2 - tiles / stone
Flashes red alternately - mains voltage present and device is heating up
Lights up green continuously - device is operable
Flashes red quickly - indicates that the decalcification cartridge needs to be replaced. To replace the decalcification cartridge, see chapter *Replacing the decalcification cartridge*.
- ⑤ Handle
- ⑥ Wall anti-slip handle
- ⑦ Steam lever
- ⑧ Cable hook with cable fastener
- ⑨ Decalcification cartridge

- ⑩ Filling hole for water
- ⑪ Water reservoir with reservoir cover and carrying handle
- ⑫ Mains connection with mains plug
- ⑬ Unlocking button for floor nozzle
- ⑭ Floor nozzle
- ⑮ Hook and loop fastener
- ⑯ Microfibre floor cloth (1 x)
- ⑰ * Abrasive floor cloth (1 x)

* optional

Installation

Installing the floor nozzle

1. Hold the device by the handle.
2. Connect the lower section of the basic unit to the floor nozzle until it audibly latches into place.

Illustration B

Installing the floor cleaning cloth

1. Attach the floor cleaning cloth to the floor nozzle.
 - a Place the floor cleaning cloth with the hook and loop strips pointing upwards on the floor.
 - b Place the floor nozzle onto the floor cleaning cloth, applying slight pressure.

Illustration C

The floor cleaning cloth will stick to the floor nozzle of its own accord due to the hook and loop fastener.

Initial Start-Up

ATTENTION

Device damage due to calcification

Always work with a decalcification cartridge.

1. Insert the decalcification cartridge into the water reservoir and press it firmly into place.

Illustration D

Installation information

When steaming for the first time after removing and re-inserting the decalcification cartridge, the steam jet may be weak or irregular, and individual drops of water may be expelled. The device requires a short running-in period in which the decalcification cartridge fills with water. The steam volume that is expelled increases constantly until the maximum steam volume has been reached after approx. 30 seconds.

Note

Please note that here it is set to steam stage 2 (tiles/stone), since the running-in period will otherwise be extended.

Operation

Unwinding the power cable

⚠ WARNING

Risk of electric shock

If the power cable is not completely unwound, the danger exists of you straining and damaging the power cable by overestimating the range of the cable. Always completely unwind the power cable.

Note

The lower cable holder can be rotated by 360° for removing the cable. The upper cable hook cannot be rotated.

1. Turn the lower cable holder upwards.
2. Remove the power cable completely from the cable hook.
3. Fasten the cable in the fastener of the upper or lower cable hook to prevent it from being run over during cleaning work.

Illustration E

Filling water

The water reservoir can be filled at any time.

ATTENTION

Material damage through open reservoir cover or incorrectly seated or loose water reservoir

Liquid can escape and damage the floor covering if the reservoir cover is not correctly closed or the water reservoir is not correctly inserted into the device.

Take care to ensure that the reservoir cover is securely closed and the water reservoir is seated tightly in the device when the water reservoir is full.

ATTENTION

Damage to the device

Unsuitable water can block the nozzles.

Do not use condensation from the clothes dryer for filling.

Do not use collected rain water for filling.

Do not use cleaning agents or other additives (e.g. scents) for filling.

Note

The decalcification cartridge must be installed in the water reservoir when filling the water reservoir.

Filling the water reservoir directly on the device

1. Hold the device firmly.
2. Open the reservoir cover, and fill the water reservoir with max. 0.4 l tap water, directly at the device.

Illustration F

3. Close the reservoir cover.

Removing the water reservoir for filling

1. Hold the device firmly.
2. Pull the water reservoir vertically upwards by the handle.
3. Open the reservoir cover, and fill with max. 0.4 l tap water.

Illustration G

4. Close the reservoir cover.
5. Insert the water reservoir and press downwards until it locks into place.

Switching on the device

ATTENTION

Please check with flooring manufacturer whether steam can be used on your floors.

Device and material damage due to tipping over

The device can fall over and be damaged if inadequately secured during work breaks or storage. Liquid can also leak out and damage the floor covering in the process.

Position the device with the floor nozzle on a solid base, or the handle with the wall anti-slip protection in a vertical position on a solid wall.

Installation information

When steaming for the first time after removing and re-inserting the decalcification cartridge, the steam jet may be weak or irregular, and individual drops of water may be expelled. The device requires a short running-in period.

riod in which the decalcification cartridge fills with water. The steam volume that is expelled increases constantly until the maximum steam volume has been reached after approx. 30 seconds.

Note

Please note that here it is set to steam stage 2 (tiles/stone), since the running-in period will otherwise be extended.

1. Place the device on a firm surface.

Illustration H

2. Plug the mains plug into a mains socket.

Illustration I

3. The indicator light flashes red alternately.

Illustration J

4. The indicator light lights up constantly green after approx. 30 seconds.

Illustration K

The device is ready for use.

Regulating the steam volume

The steam volume setting depends on the surface to be cleaned.



Note

Controlling the volume of steam only works for the SC 2 Upright EasyFix. Only one steam stage is available for the KST 2 Upright.

- Press the button with the direction arrows on the handle repeatedly until the desired steam stage is selected.

Illustration L

2 different steam stages are available:

	Tiles/stone - maximum steam stage
	Wood - minimum steam stage

Note

The maximum steam stage (Tiles/stone) is always selected when the device is switched on.

- Press the steam lever after setting the steam volume.

Illustration M

Refilling water

Note

The water level can be seen through the partially transparent fresh water reservoir.

When the water is refilled, the decalcification cartridge remains fixed in the device.

- Open the reservoir cover, and fill the water reservoir with max. 0.4 l tap water, directly at the device.

Illustration F

or

- Remove the water reservoir, open the reservoir cover, and fill with max. 0.4 l tap water, see chapter *Filling water*.

Illustration G

Interrupting operation

ATTENTION

Material damage due to condensate/moisture

The floor covering can be damaged by moisture remaining on the floor cleaning cloth or floor nozzle/device after cleaning.

Remove the floor cleaning cloth and dry the floor nozzle/ the device after finishing the cleaning work.

Do not place or store the device on heat-sensitive surfaces.

In order to save energy, we recommend that you switch off the device for breaks in operation of longer than 20 minutes.

1. Pull the mains plug out of the socket.

Illustration N

Switching off the device

1. Pull the mains plug out of the socket.

Illustration N

ATTENTION

Device damage due to water putrefaction

The water in the reservoir may putrefy if the device is not put into operation for more than 2 months.

Drain the water reservoir before longer breaks in operation.

2. To drain the water reservoir, see chapter *Draining the water reservoir*.

Illustration O

Storing the device

1. To remove the floor cleaning cloth, see chapter *Floor nozzle*.

Illustration C

2. Remove the moisture from the floor nozzle/device.
3. Wind the power cable around the lower and upper cable hooks.

Illustration P

4. Store the device in vertical position on a solid base or on a wall.

Illustration H

5. Store the device in a dry location that is protected from frost.

Important application instructions

Cleaning the floor areas

We recommend sweeping the floor or vacuum cleaning it before using the appliance. In this way the floor will be cleared of dirt and loose particles before the wet cleaning.

Cleaning coated or painted surfaces

ATTENTION

Damaged surfaces

Steam can loosen wax, furniture polish, plastic coatings or paint and edge band from edges.

Do not direct the steam at glued laminated edges as the edge band may loosen.

Do not use the device for cleaning unsealed wood or parquet floors.

Do not use the device for cleaning painted or plastic coated surfaces such as kitchen or living room furniture, doors or parquet.

How to use the Accessories

Floor nozzle

The floor nozzle is suitable for cleaning washable floor coverings, e.g. stone floors, tiles and PVC floors, as well as sealed wooden floors such as parquet and laminate.

ATTENTION

Damage due to steam effect

Heat and the effects of steam can lead to damage.

Check the heat resistance and steam effect on an inconspicuous area using a minimal volume of steam prior to use.

Steam clean sealed wooden floors using the correct, preset steam level, and do not remain in the same position on the floor for too long.

Note

Detergent residues or care emulsions on the surface to be cleaned can cause streaks during steam cleaning, but these disappear after repeated use.

⚠ CAUTION

Beware of burns to your feet

The floor nozzle/floor cleaning cloth heats up during steaming.

Hot water may drip out when pulling off the floor cloth. Only operate or remove the floor nozzle/floor cleaning cloth with suitable footwear.

For fastening the floor cleaning cloth to the floor nozzle, please refer to chapter *Installing the floor cleaning cloth*

Microfibre floor cloth

The microfibre floor cloth is suitable for cleaning stone floors, tiles and PVC floors, and also sealed wooden floors such as parquet and laminate.

Abrasive floor cloth

The abrasive floor cloth is suitable for cleaning insensitive surfaces such as tiles or stone.

ATTENTION

Damage to floor coverings

The abrasive floor cloth can damage sensitive floor coverings and surfaces.

Do not use the abrasive floor cloth for cleaning wooden surfaces.

Do not use the abrasive cloth with the carpet glider.

Removing the floor cleaning cloth

1. Place one foot on the bottom corner of the floor cleaning cloth and lift the floor nozzle up.

Illustration C

Note

Initially, the floor cleaning cloth's hook and loop fastener strip is very strong and cannot be removed from the floor nozzle easily. After the floor cleaning cloth has been used several times and washed, it is easier to remove from the floor nozzle and it has reached the optimum adhesion.

Removing the floor nozzle from the basic unit

ATTENTION

Material damage due to an unstable device

Removing the floor nozzle makes the device unstable and it can tip over and damage the device and floor covering.

Do not remove the floor nozzle from the basic unit after installation.

Remove the floor nozzle only when sending the device for servicing.

1. Pull the mains plug out of the socket.

Illustration N

2. Drain the water reservoir.

Illustration O

3. Hold the device tightly by the handle.
4. Actuate the unlocking button for the floor nozzle.
5. The floor nozzle releases from the device and can be removed.

Illustration Q

6. Store the device safely in a horizontal position.

Care and service

Draining the water reservoir

ATTENTION

Device damage due to water putrefaction

If the device is not put into operation for more than 2 months, the water in the reservoir may putrefy.

Drain the water reservoir before breaks in operation.

1. Pull the mains plug out of the socket.

Illustration N

2. Remove the reservoir cover.
3. Remove the decalcification cartridge.
4. Drain the water reservoir.

Illustration O

Replacing the decalcification cartridge

ATTENTION

Device damage and shortened service life

If the replacement intervals (indicator light) for the decalcification cartridge are not observed, there is a risk of device damage and the service life of the device may be shortened.

Observe the replacement intervals (indicator light).

Note

The anti-calcification effect of the decalcification cartridge is activated as soon as the reservoir is filled with water, and the device is put into operation. Lime in the water is absorbed by the granulate in the decalcification cartridge. Additional descaling is not required.

Note

The granulate in the decalcification cartridge may change colour after it comes into contact with water. This depends on the mineral content in the water. This discolouration is harmless and does not have a negative effect on the device, the cleaning work or the functionality of the decalcification cartridge.

Indicator light at end of the run time

The indicator light shows you when the decalcification cartridge needs to be replaced.

- The indicator light flashes red 1 hour before the run time expires.

Illustration R

- When the run time of the decalcification cartridge is exhausted, the indicator light flashes quickly. The pump switches off automatically (no water steam) to prevent damage to the device.

Inserting the decalcification cartridge

ATTENTION

Device damage

There is a risk of damage to the device if the used decalcification cartridge is re-used.

Work carefully in order to prevent mixing up the cartridges.

Installation information

When steaming for the first time after removing and re-inserting the decalcification cartridge, the steam jet may be weak or irregular, and individual drops of water may be expelled. The device requires a short running-in period in which the decalcification cartridge fills with water. The steam volume that is expelled increases constantly until the maximum steam volume has been reached after approx. 30 seconds.

Note

Removing the water reservoir makes it easier to remove and install the decalcification cartridge.

1. Pull the mains plug out of the socket.
- Illustration N**
2. Remove the reservoir cover.
 3. Remove the decalcification cartridge.
 4. Insert the new decalcification cartridge and press it firmly into place.

Illustration S

5. Press the steam lever and insert the mains plug into a socket.
6. Keep the steam lever pressed for 7 seconds.

Illustration T

7. After a successful reset, the device flashes green twice and then switches to heating mode.
8. Press and hold the steam lever for approximately 30 seconds to vent the decalcification cartridge.

Care of accessories

(Accessories - depending on scope of delivery)

Note

The micro fibre cloths are not suitable for dryer.

Note

Observe the instructions on the washing tag when washing the cloths. Do not use any liquid softeners as this will affect the ability of the cloths to pick up dirt.

1. Wash the floor cleaning cloths in a washing machine at a max. temperature of 60 °C.

Troubleshooting guide

Malfunctions often have simple causes that you can remedy yourself using the following overview. When in doubt, or in the case of malfunctions not mentioned here, please contact your authorised Customer Service.

⚠ WARNING

Risk of electric shock and burns

Trying to eliminate faults while the appliance is connected to the mains or has not yet cooled down is always dangerous.

Remove the mains plug.

Allow the appliance to cool down.

No steam / little steam although there is sufficient water in the reservoir

The decalcification cartridge has not been inserted or has been inserted incorrectly.

- Fit the decalcification cartridge and/or check that the decalcification cartridge sits tightly in the reservoir and press in again if necessary.

The decalcification cartridge has been removed when filling with water and/or a new decalcification cartridge has been fitted

- Always leave the decalcification cartridge in the water reservoir during filling.
- Press and hold the steam lever constantly. The full steam output is reached after approximately 30 seconds.

The indicator light flashes red at regular intervals

Run time of the decalcification cartridge ends soon.

- Fit a new decalcification cartridge, see chapter *Inserting the decalcification cartridge*.

No steam although there is sufficient water in the reservoir. The indicator light flashes red quickly.

Run time for the decalcification cartridge has expired

- Fit a new decalcification cartridge, see chapter *Inserting the decalcification cartridge*.
- If a new decalcification cartridge has already been installed and this error still occurs, the reset process has probably not been carried out correctly. Please follow the steps below to reset it:

1. Pull the mains plug out of the socket.

2. Press and hold the steam lever constantly.
3. Plug in the mains plug and hold the steam lever for 7 seconds until the indicator lights flash green twice. See chapter *Replacing the decalcification cartridge*.

Warranty

The warranty conditions issued by our relevant sales company apply in all countries. We shall remedy possible malfunctions on your appliance within the warranty period free of cost, provided that a material or manufacturing defect is the cause. In a warranty case, please contact your dealer (with the purchase receipt) or the next authorised customer service site. (See overleaf for the address)

Technical data

		SC 2 Up-right
Electrical connection		
Voltage	V	220-240
Phase	~	1
Frequency	Hz	50-60
Degree of protection		IPX4
Protection class		I
Device performance data		
Heating capacity	W	1600
Heating-up time	Seconds	30
Continuous steaming	g/min	38
Filling quantity		
Water reservoir	l	0.4
Dimensions and weights		
Weight (without accessories)	kg	2.7
Length	mm	314
Width	mm	199
Height	mm	1185

Subject to technical modifications.



THANK YOU!
MERCI! DANKE! ¡GRACIAS!



Registrieren Sie Ihr Produkt und profitieren Sie von vielen Vorteilen.

Register your product and benefit from many advantages.

Enregistrez votre produit et bénéficiez de nombreux avantages.

Registre su producto y aproveche de muchas ventajas.

www.kaercher.com/welcome



Bewerten Sie Ihr Produkt und sagen Sie uns Ihre Meinung.

Rate your product and tell us your opinion.

Évaluer votre produit et dites-nous votre opinion.

Reseñe su producto y díganos su opinión.



www.kaercher.com/dealersearch

Alfred Kärcher SE & Co. KG
Alfred-Kärcher-Str. 28-40
71364 Winnenden (Germany)
Tel.: +49 7195 14-0
Fax: +49 7195 14-2212

