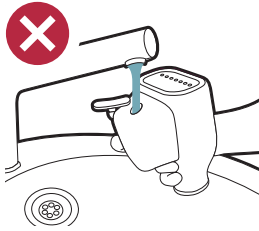
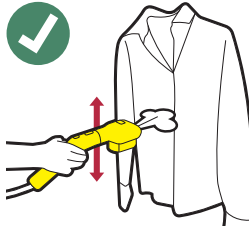


# KÄRCHER

## How to use



**Do not fill in water**



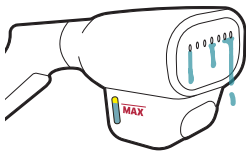
**Slowly move vertically**



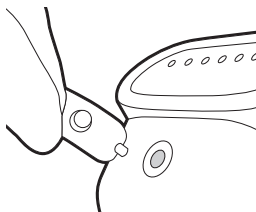
**Do not incline or move fast-paced: water leakage**

5.951-227.0 (02/2024)

## Please mind



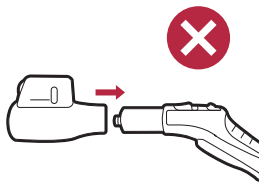
**Check tank level if water leaks although used correctly**



**Tilt the tank backwards when opening the lid**



**Empty water tank if filled to max**



**Do not attach upside down**



**Water in the tank and metal plate can get hot**



**Do not use with metal plate facing down (e.g. on seating surfaces, ironing boards, tables)**