

QUICKSTART

KM 130/300 R D



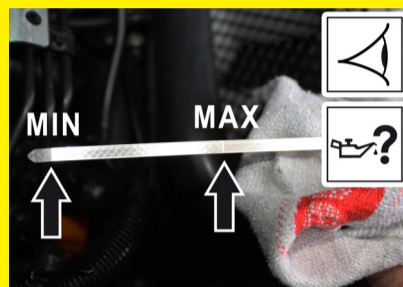
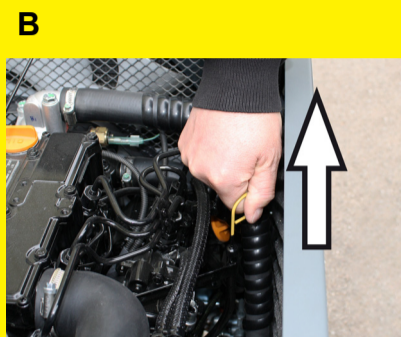
Warning

These are only brief instructions! Please read and comply with these instructions prior to using or servicing your appliance.

The non-compliance of the operating and safety instructions may lead to damages of the appliance and to dangers for the operator and other persons.

Start up

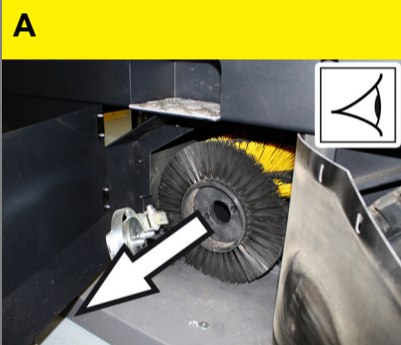
1



- A Tilt the driver's seat forward and secure it. Opening and securing hood.
- B Check oil level.
- C Check cooler water level.
- D Close cover.



2



- A Check roller brush.
- B Check side brush.

3



- A Sit on the driver's seat.
- B Turn the ignition key to position "I".
- C Check fuel level via the tank indicator. Fill in diesel.



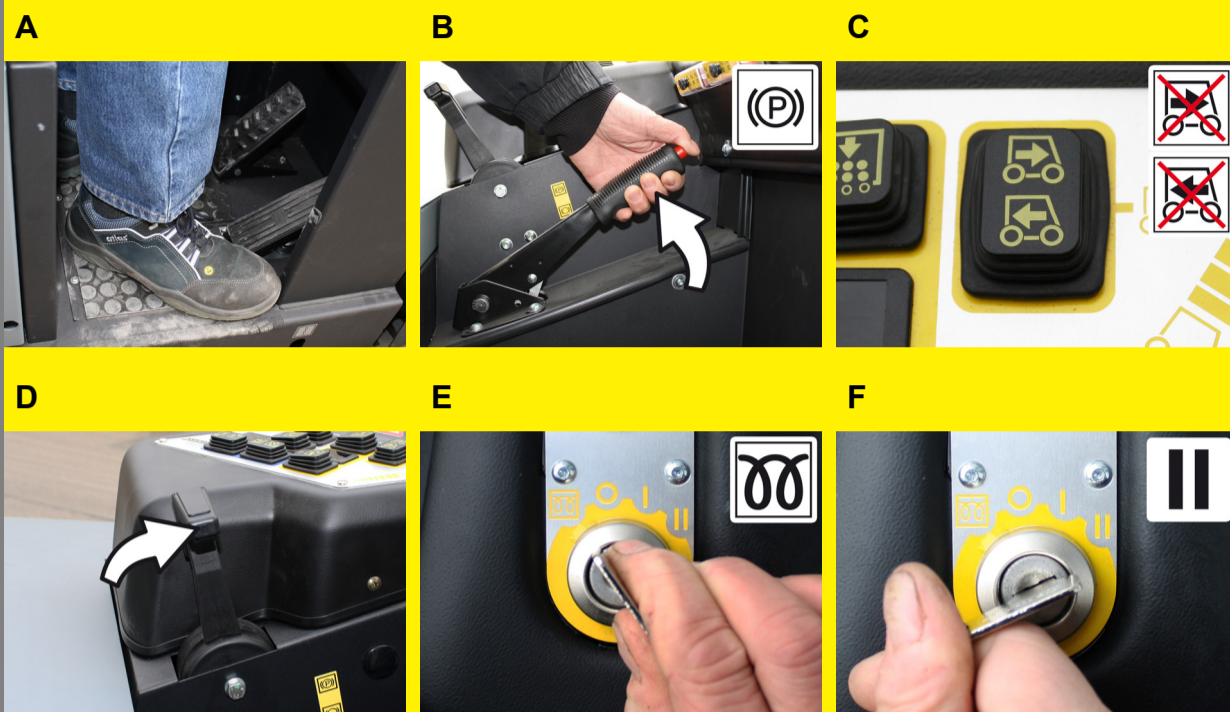
4



- A Pull seat adjustment lever outwards.
- B Slide seat, release lever and lock in place. Check that the seat is properly locked in position by attempting to move it backwards and forwards.
- C Adjust the seat back.

Operation

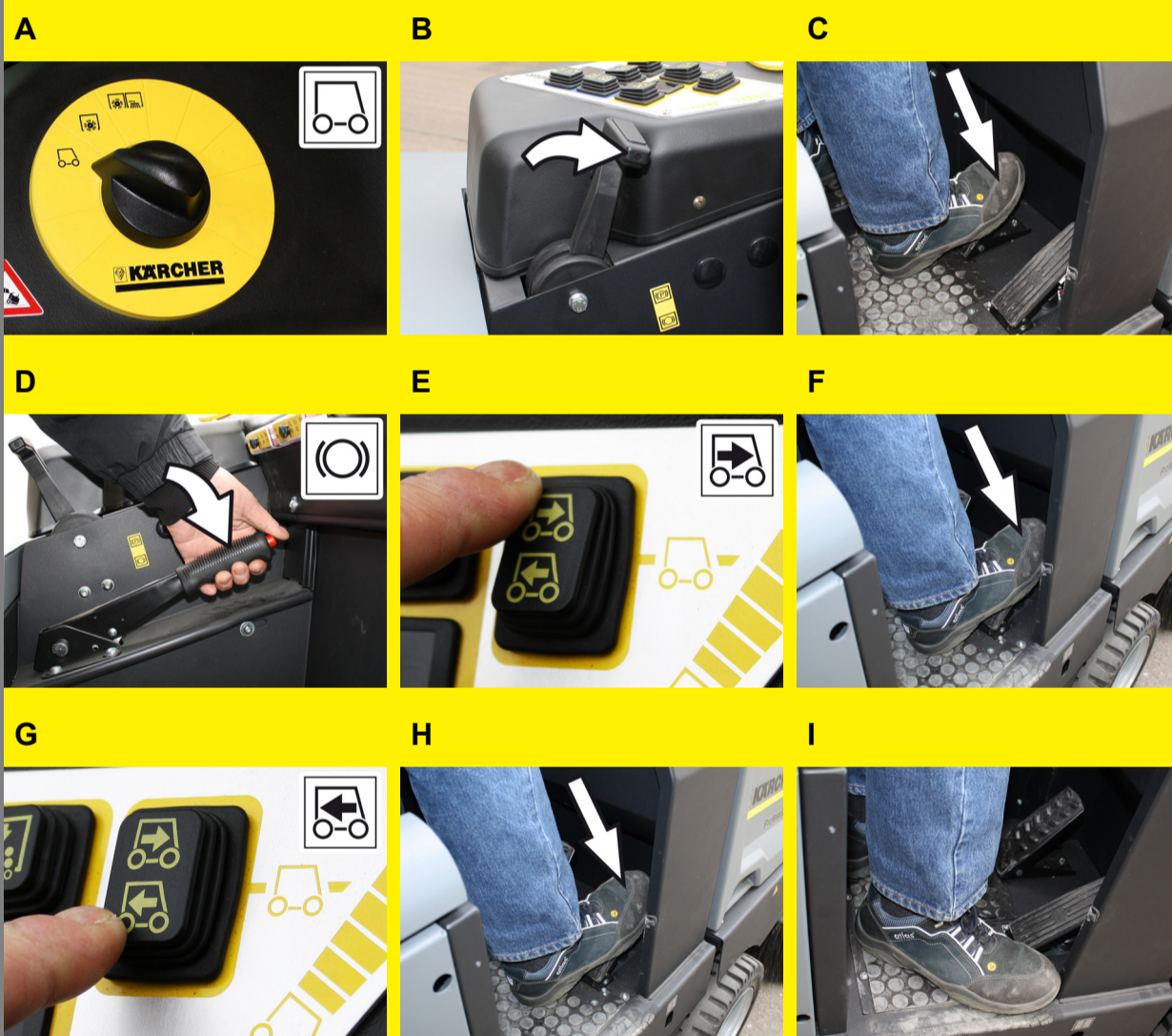
1



Starting the machine

- A Sit on the driver's seat. Do NOT press the accelerator pedal.
- B Lock parking brake.
- C Bring the direction selector switch into the middle position.
- D Engine speed adjustment - push forward by 1/3.
- E Insert the ignition key into the ignition lock. Turn the ignition key to position "Filament". Pre-heat lamp glows.
- F When the pre-heating lamp goes off, turn the ignition key to position "II". If the machine starts, release the ignition key. Release parking brake.

2



Drive the machine

Caution

Risk of damage. Only use the direction switch when the machine is standing still.

- A Set programme switch to step 1 (driving).
- B Move the gas lever all the way to the front (high speed).
- C Press brake pedal and keep it depressed.
- D Release parking brake.

Drive forward

- E Set the travel direction switch to "forward".
- F Press accelerator pedal down slowly.

Reverse drive

⚠ Danger

Risk of injury! While reversing, ensure that there is nobody in the way, ask them to move if somebody is around.

- G Set the travel direction switch to "backwards".
- H Press accelerator pedal down slowly.

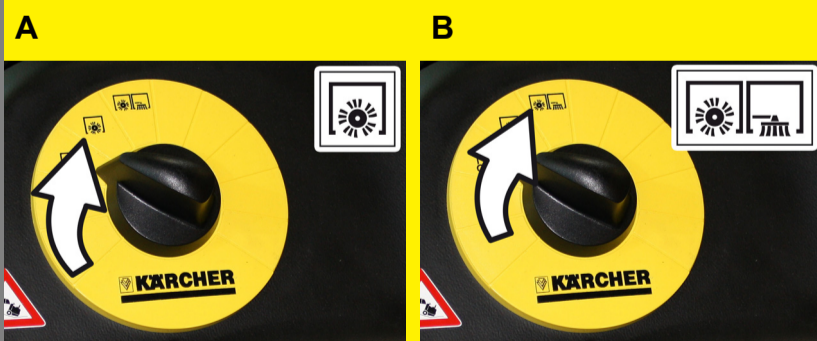
Brakes

- I Release the accelerator pedal, the machine brakes automatically and stops.

Note

The braking effect can be supported by pressing the brake pedal.

3



Sweeping mode

Sweeping with sweep roller

- A Set programme switch to step 2. Roller brush is lowered.

Sweeping using roller brush and side brushes

- B Set programme switch to step 3. Side brushes and roller brush are lowered.

4



Sweeping damp or wet floors

- A Switch off the blower.

Operation

5



Cleaning the dust filter

A Press the switch of the dust filter cleaning system.

6



Operation with beacon lamp

A Switch on the beacon lamp.

7



Emptying waste container

⚠ Danger

Risk of injury! When emptying the waste container, care should be taken to ensure that no persons or animals are within its swivelling range.

⚠ Danger

Danger of crushing. Never reach into the rod assembly for the drainage mechanism. Stay away from the area under the raised container.

⚠ Danger

Danger of tipping. Place the machine on an even surface during emptying.



- A Raise waste container.
Slowly drive towards the collection container.
Lock parking brake.
- B Open the flap of the waste container.
- C Close the flap of the waste container.
Release parking brake.
Drive away the collection container slowly.
- D Lower the waste container up to the end-position.

Finish operation

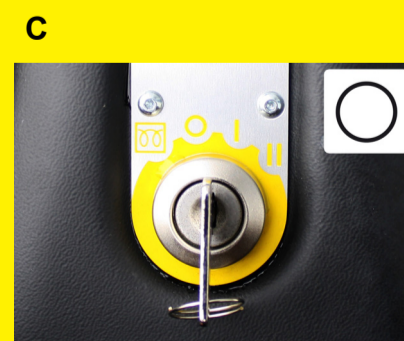
1



Emptying waste container

See "Operation", item 7.

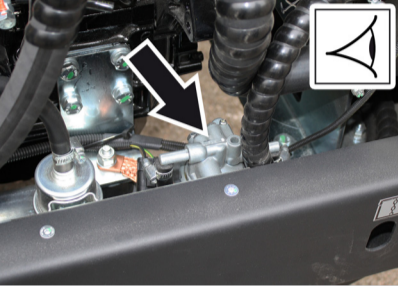
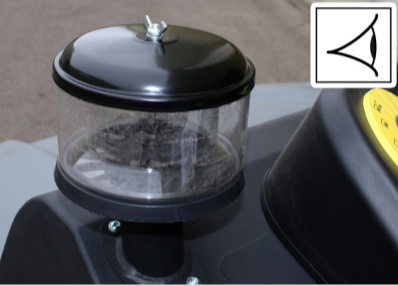
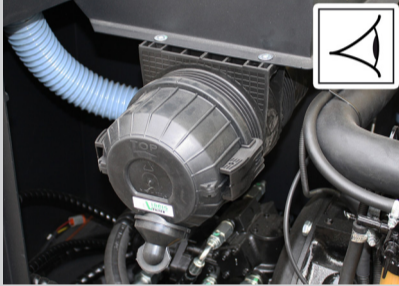
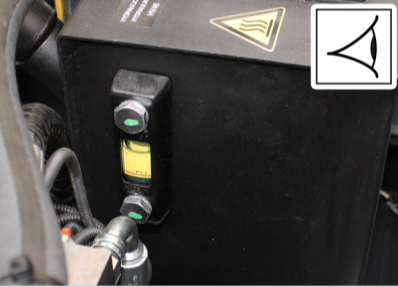
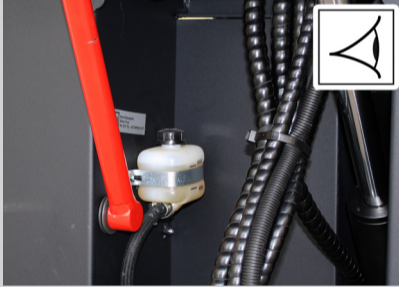
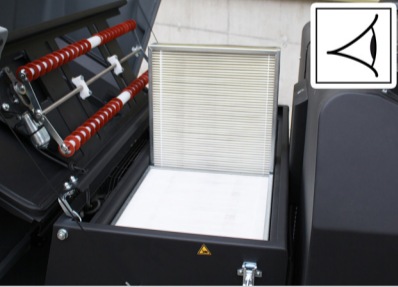

2



Turn off the appliance

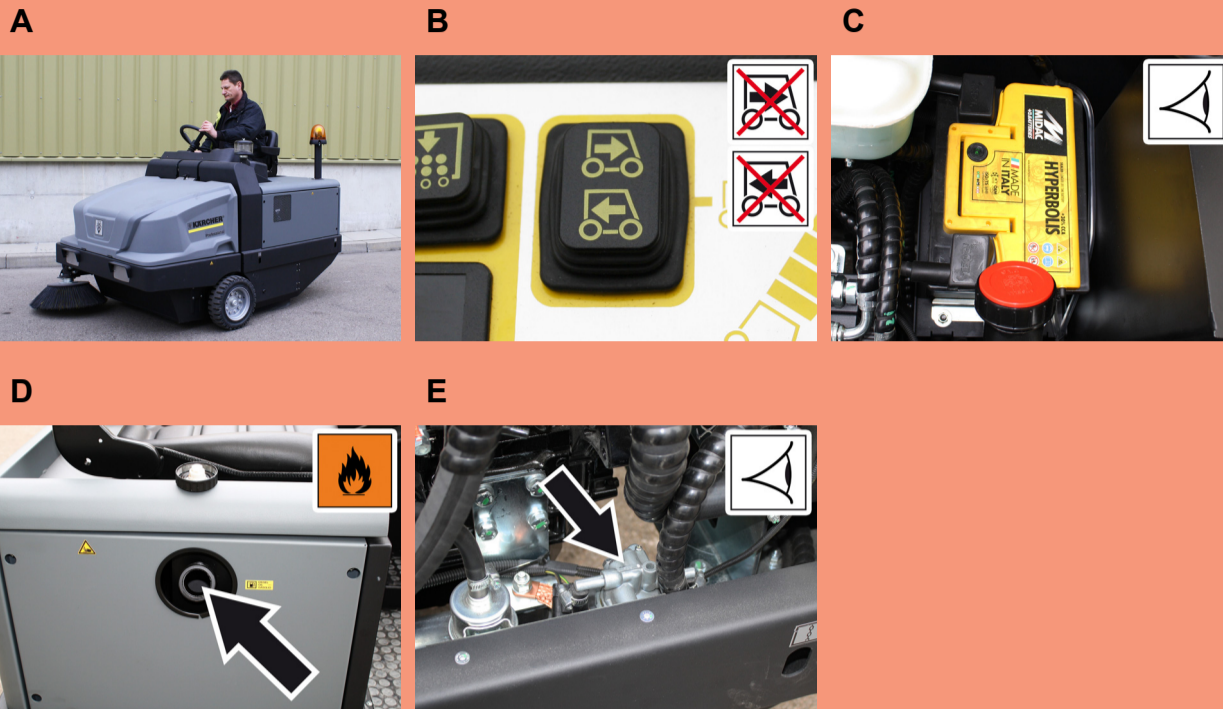
- A Set programme selection to "Drive".
Push the motor speed adjustment all the way to the rear.
- B Press brake pedal and keep it depressed.
Lock parking brake.
- C Turn ignition key to "0" and remove it.

Maintenance and care

		daily	weekly	Kärcher Customer Service
1	<p>A</p> 			
	A Check fuel filter.			
2	<p>A</p>  			
	A Check the centrifugal separator and the air filter, clean if required.			
3				
	A Check function of all operator control elements. B Check appliance for damages.			
4	<p>A</p>  <p>B</p> 			
	A Check the hydraulic oil level. B Check brake fluid status. ⚠ Danger <i>Risk of injury! Always apply the safety bar when the waste container is raised.</i>			
5	<p>A</p>  <p>B</p> 			
	A Check dust filter and clean filter box, if required. B Clean the machine with a damp cloth which has been soaked in mild detergent. Note <i>Do not use aggressive cleaning agents.</i>			
6				
	A Clean the water cooler. B Clean the hydraulic oil cooler. C Check hydraulic unit. D Check the pad for wear, replace if required. E Check the container lid and lubricate it.			
7				
	See inspection checklist 5.950-646.0!			

Troubleshooting

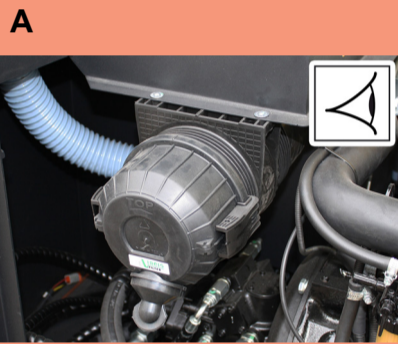
1



Appliance cannot be started

- A Sit on the driver seat, the seat contact switch gets activated.
- B Bring the direction selector switch into the middle position.
- C Charging or replacing battery
- D Fill in fuel, deaerate the fuel system
- E Change fuel filter

2



Engine is running erratically

- A Remove the air filter housing. Clean air filter or change filter cartridge.

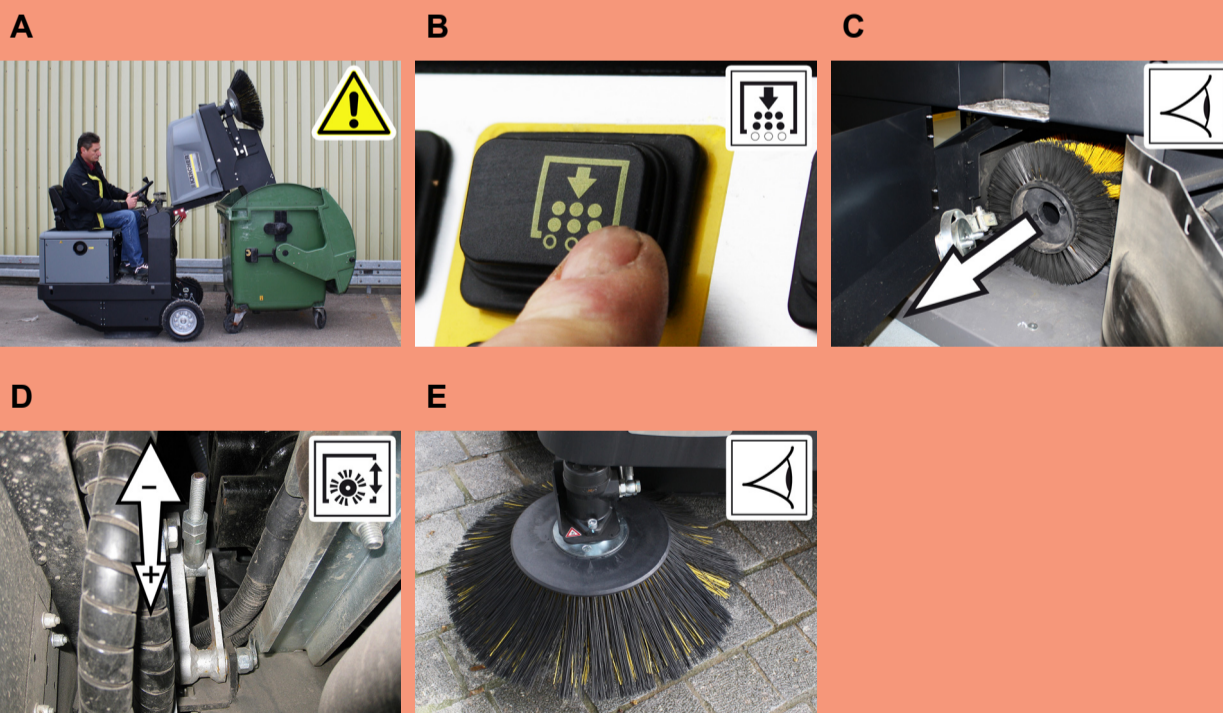
3



Engine is running but machine is not moving

- A Set the travel direction switch to "forward" or "reverse".
- B Release parking brake
- C Check the free-wheeling of the hydraulic pump

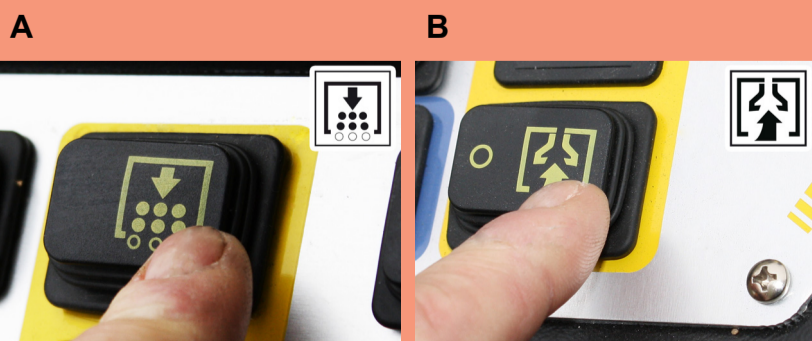
4



Sweeping unit does not pick up waste

- A Empty waste container. See "Operation", item 7.
- B Check dust filter, clean or replace
- C Replacing roller brush. Remove the blocking of the brush roller
- D Adjust sweeping track
- E Replace the side brushes

5



Dust gathers in the machine

- A Check dust filter, clean or replace
- B Switch on the blower.