

QUICKSTART

KM 170/600 R D



Warning

These are only brief instructions! Please read and comply with these instructions prior to using or servicing your appliance.

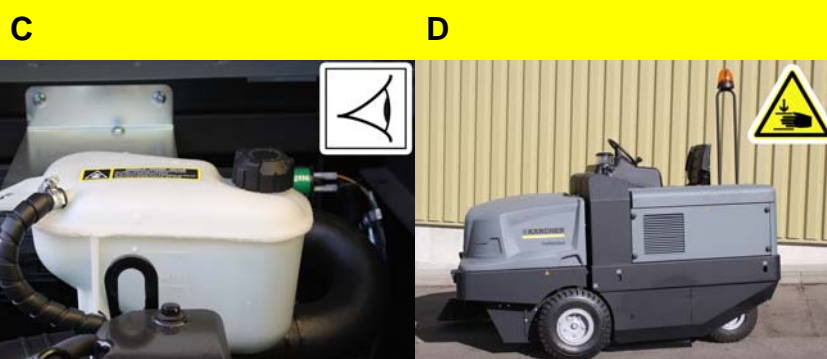
The non-compliance of the operating and safety instructions may lead to damages of the appliance and to dangers for the operator and other persons.

Start up

1



- A Opening and securing hood.
- B Check oil level.
- C Check cooler water level.
- D Close cover.



2



- A Check tyre pressure.
- B Check roller brush.
- C Check side brush.

3



- A Sit on the driver's seat.
- B Turn the ignition key to position "I".
- C Check fuel level via the tank indicator. Fill in diesel.



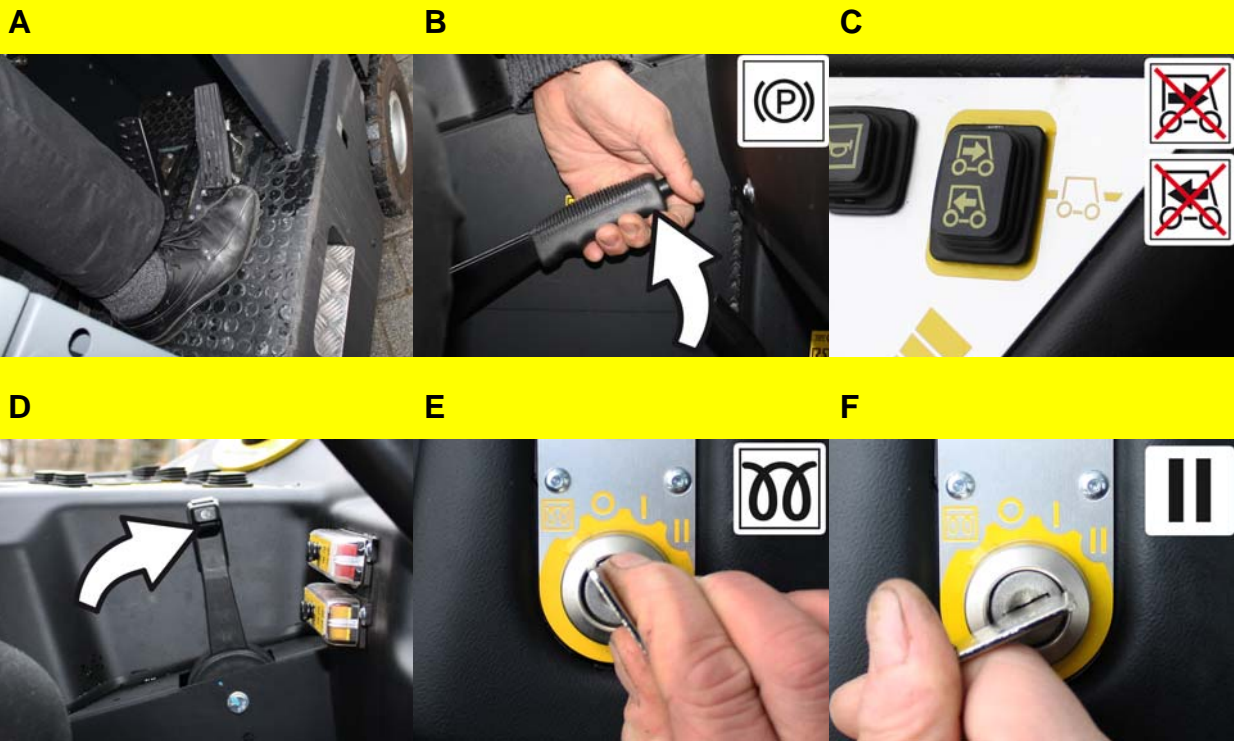
4



- A Pull seat adjustment lever outwards.
- B Slide seat, release lever and lock in place. Check that the seat is properly locked in position by attempting to move it backwards and forwards.
- C Adjust the seat back.

Operation

1



Starting the machine

- A Sit on the driver's seat. Do NOT press the accelerator pedal.
- B Lock parking brake.
- C Bring the direction selector switch into the middle position.
- D Engine speed adjustment - push forward by 1/3.
- E Insert the ignition key into the ignition lock. Turn the ignition key to position "Filament". Pre-heat lamp glows.
- F When the pre-heating lamp goes off, turn the ignition key to position "II". If the machine starts, release the ignition key. Release parking brake.

2



Drive the machine

Caution

Risk of damage! Only use the direction switch when the machine is standing still.

- A Set programme switch to step 1 (driving).
- B Move the gas lever all the way to the front (high speed).
- C Press brake pedal and keep it depressed.
- D Release parking brake.

Drive forward

- E Set the travel direction switch to "forward".
- F Press accelerator pedal down slowly.

Reverse drive

⚠ Danger

Risk of injury! While reversing, ensure that there is nobody in the way, ask them to move if somebody is around.

- G Set the travel direction switch to "backwards".
- H Press accelerator pedal down slowly.

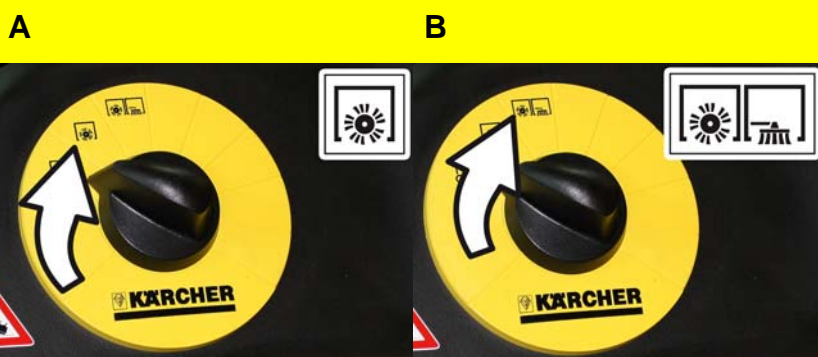
Brakes

- I Release the accelerator pedal, the machine brakes automatically and stops.

Note

The braking effect can be supported by pressing the brake pedal.

3



Sweeping mode

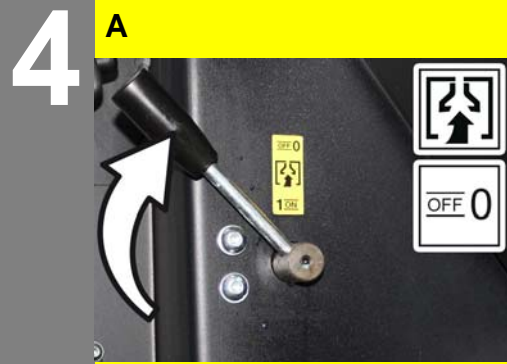
Sweeping with sweep roller

- A Set programme switch to step 2. Roller brush is lowered.

Sweeping using roller brush and side brushes

- B Set programme switch to step 3. Side brushes and roller brush are lowered.

Operation



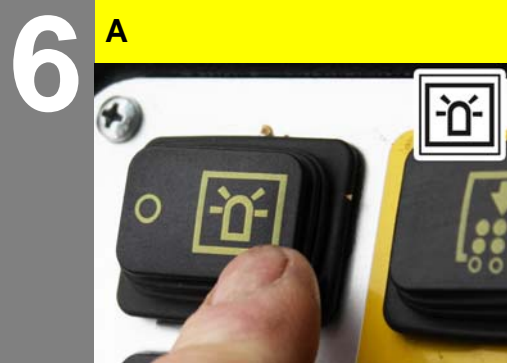
Sweeping damp or wet floors

A Set ventilator lever to "OFF".



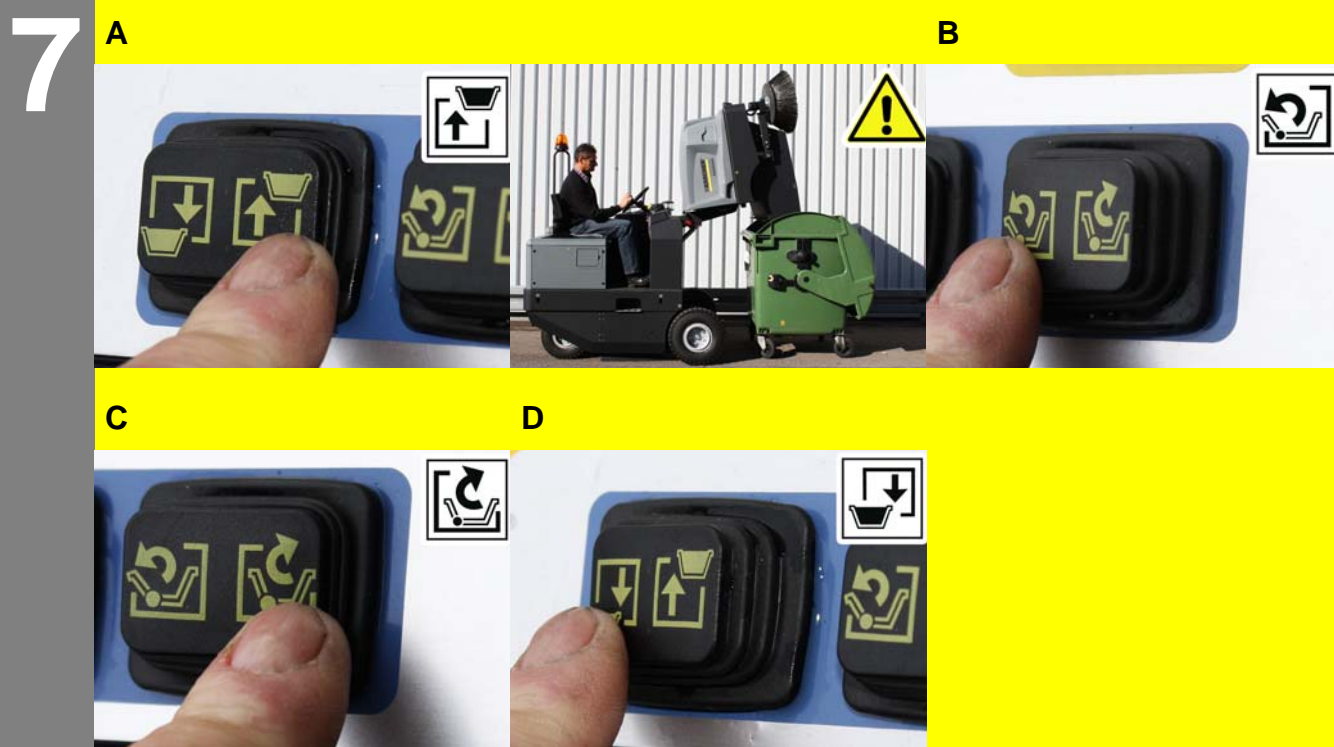
Cleaning the dust filter

A Press the switch of the dust filter cleaning system.



Operation with beacon lamp

A Switch on the beacon lamp.



Emptying waste container

⚠ **Danger**

Risk of injury! When emptying the waste container, care should be taken to ensure that no persons or animals are within its swivelling range.

⚠ **Danger**

Danger of crushing. Never reach into the rod assembly for the drainage mechanism. Stay away from the area under the raised container.

⚠ **Danger**

Danger of tipping. Place the machine on an even surface during emptying.

- A Raise waste container.
Slowly drive towards the collection container.
Lock parking brake.
- B Open the flap of the waste container.
- C Close the flap of the waste container.
Release parking brake.
Drive away the collection container slowly.
- D Lower the waste container up to the end-position.

Finish operation



Emptying waste container

See "Operation", item 7.

Finish operation

2



Turn off the appliance

- A Set programme switch to step 1 (driving). The side brush and roller brush are raised. Push the motor speed adjustment all the way to the rear.
- B Press brake pedal and keep it depressed. Lock parking brake.
- C Turn ignition key to "0" and remove it.

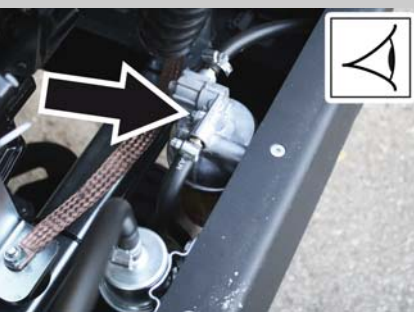
Maintenance and care

daily

weekly

Kärcher Customer Service

1



A Check fuel filter.

2



A Check the centrifugal separator and the air filter, clean if required.

3

A Check function of all operator control elements.
B Check appliance for damages.

4



A Check the hydraulic oil level.
B Check brake fluid status.
⚠ Danger
Risk of injury! Always apply the safety bar when the waste container is raised.

5









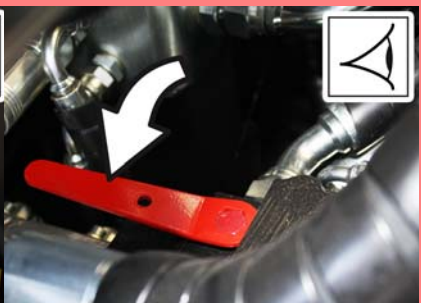
A Check dust filter and clean filter box, if required.
B Clean the machine with a damp cloth which has been soaked in mild detergent.

Note
Do not use aggressive cleaning agents.

Maintenance and care

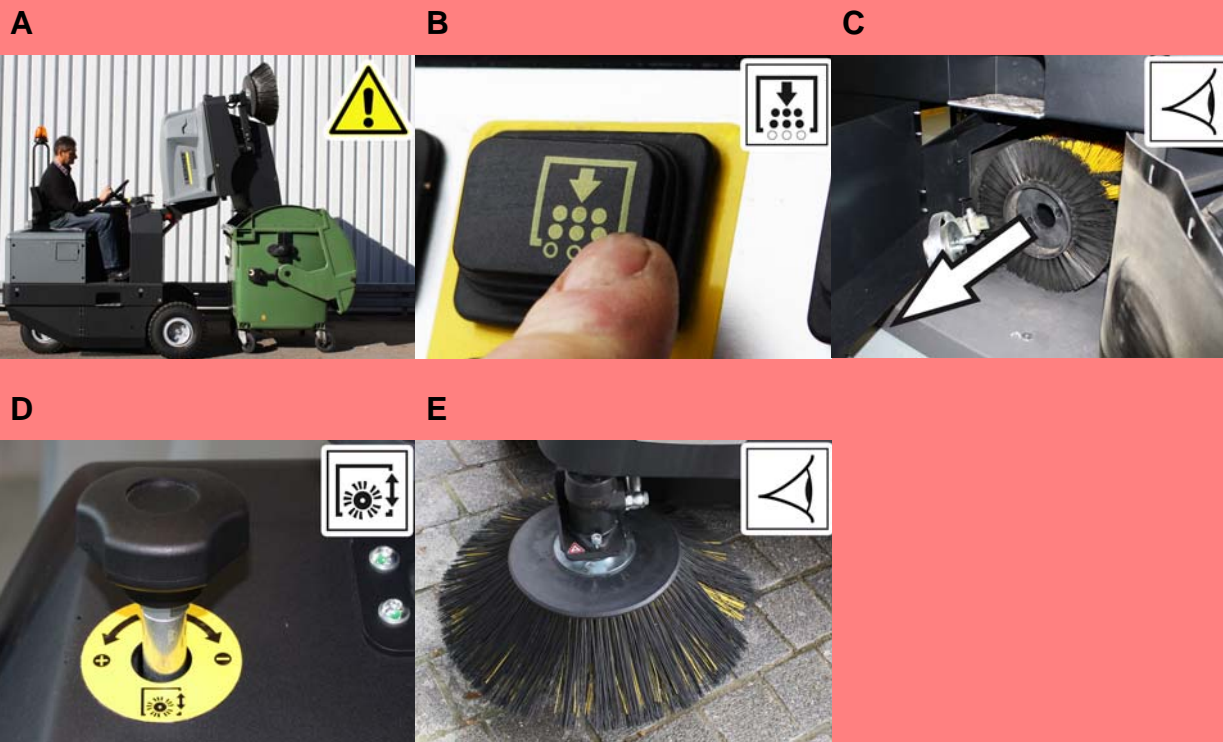
		daily	weekly	Kärcher Customer Service
6	<ul style="list-style-type: none"> A Clean the water cooler. B Clean the hydraulic oil cooler. C Check hydraulic unit. D Check the pad for wear, replace if required. E Check the container lid and lubricate it. 			
7	See inspection checklist 5.950-646.0!			

Troubleshooting

1	<p>A</p> 	<p>B</p> 	<p>C</p> 	<p>Appliance cannot be started</p> <ul style="list-style-type: none"> A Sit on the driver seat, the seat contact switch gets activated. B Bring the direction selector switch into the middle position. C Charging or replacing battery D Fill in fuel, deaerate the fuel system E Change fuel filter
	<p>GB</p> 	<p>E</p> 		
2	<p>A</p> 		<p>Engine is running erratically</p> <ul style="list-style-type: none"> A Remove the air filter housing. Clean air filter or change filter cartridge. 	
3	<p>A</p> 	<p>B</p> 	<p>Engine is running but machine is not moving</p> <ul style="list-style-type: none"> A Release parking brake B Check the free-wheeling of the hydraulic pump 	

Troubleshooting

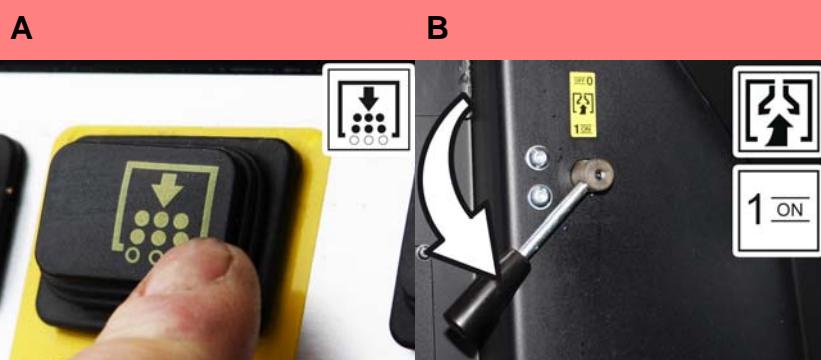
4



Sweeping unit does not pick up waste

- A Empty waste container
See "Operation", item 7.
- B Check dust filter, clean or replace
- C Replacing roller brush
Remove the blocking of the brush roller
- D Adjust sweeping track
- E Replace the side brushes

5



Dust gathers in the machine

- A Check dust filter, clean or replace
- B Set ventilator lever to "ON".