



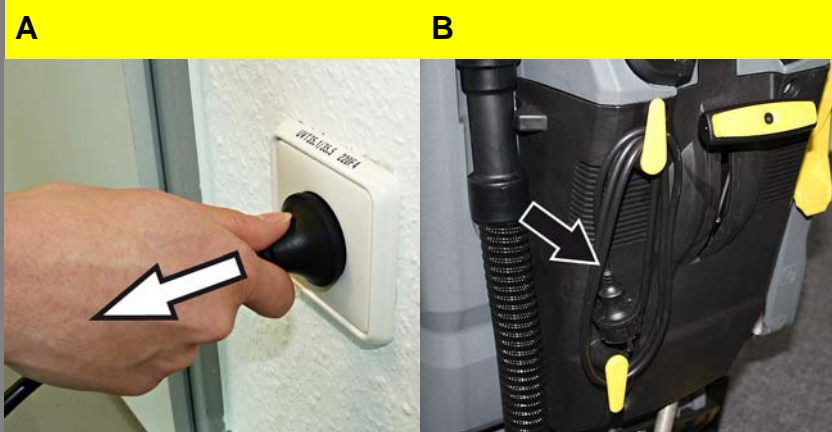
Warning

These are only brief instructions! Please read and comply with these instructions prior to using or servicing your appliance.

The non-compliance of the operating and safety instructions may lead to damage of the appliance and to risks for the operator and other persons.

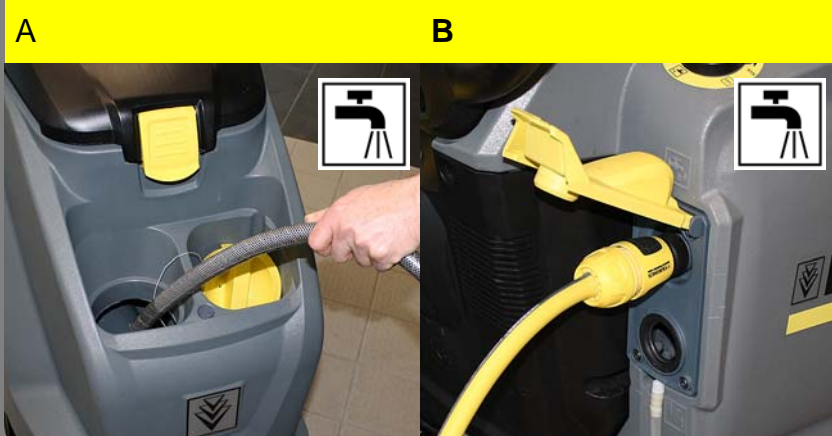
Start up

1



- A Unplug the charger from the mains.
- B Coil the battery charging cable around the cable hooks.

2



- A Open the lock of the fresh water reservoir. Fill fresh water (maximum 60 °C) until the lower edge of the filling nozzle. Close the lock of the fresh water reservoir.

or

- B Connect the hose to the automatic filling system and open the water supply (max. 60 °C, max. 5 bars). Monitor the appliance - the automatic filling system will interrupt the water supply when the tank is full. Shut off the water supply and disconnect the hose from the appliance.

⚠ Warning

Risk of damage. Only use the recommended detergents. With respect to different detergents the operator bears the increased risk regarding the operational safety and danger of accident. Only use detergents that are free from solvents, hydrochloric acid and hydrofluoric acid. Follow the safety instructions for using detergents.

Note

Do not use highly foaming detergents.

- C Add the detergent to the fresh water reservoir.

Operation

1



Setting the water quantity

- A Adjust the water quantity using the regulating button according to the dirt on the floor covering.

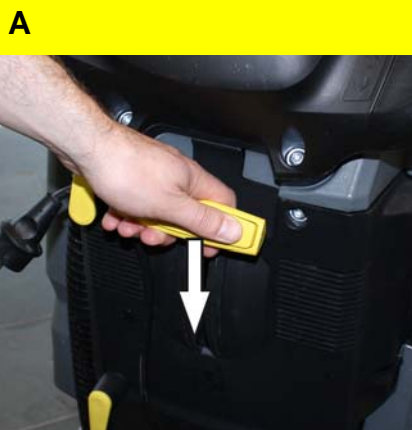
2



Lower the cleaning head

- A Press the pedal for lowering the cleaning head downwards slightly and then move it to the left. This unlocks the pedal. Release the pedal slowly upwards. The cleaning head is lowered.

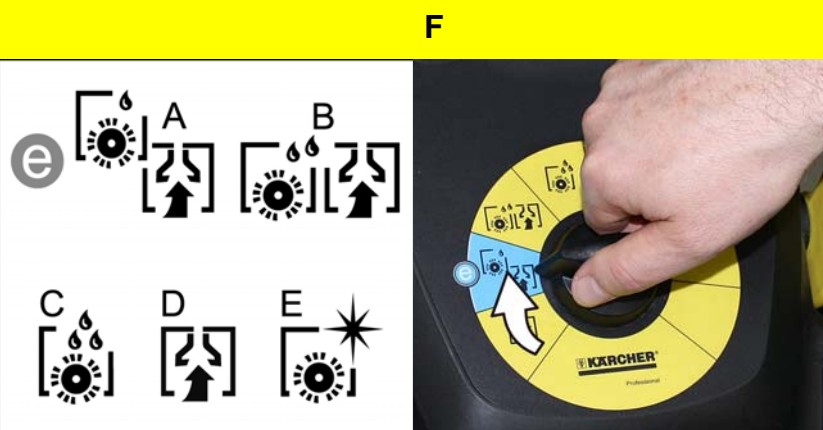
3



Lower the vacuum bar

- A Pull the lever out and press it down; the vacuum bar is lowered.

4



Cleaning Programs

- A **Eco mode**
Wet clean the floor and vacuum up dirt water.
- B **Normal mode**
Wet clean the floor and vacuum up dirt water.
- C **Intense mode**
Wet clean the floor and allow the detergent to react.
- D **Vacuum mode**
Vacuum the wastewater.
- E **Polishing mode**
Polishing the floor without the application of liquid.
- F Turn the program selection switch to the desired cleaning program.

5



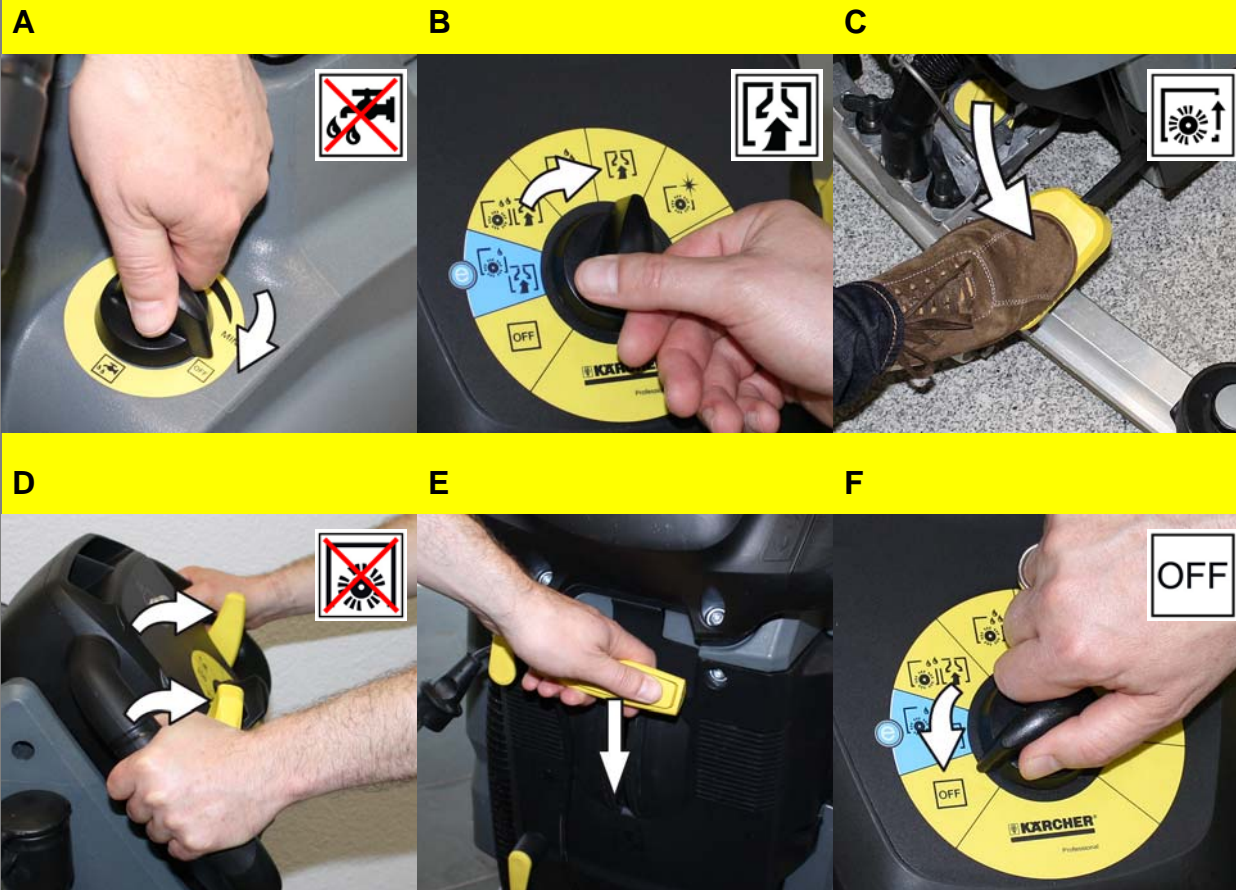
Cleaning Caution

Risk of damage to the floor covering. Do not operate the appliance on the spot.

- A Operate the safety switch. The brushes rotate; water is dispensed to the brushes depending on the setting. Depending on the selected programme, the suction turbine is running. Ride along the surface to be cleaned with a suitable, even speed.

Finish operation

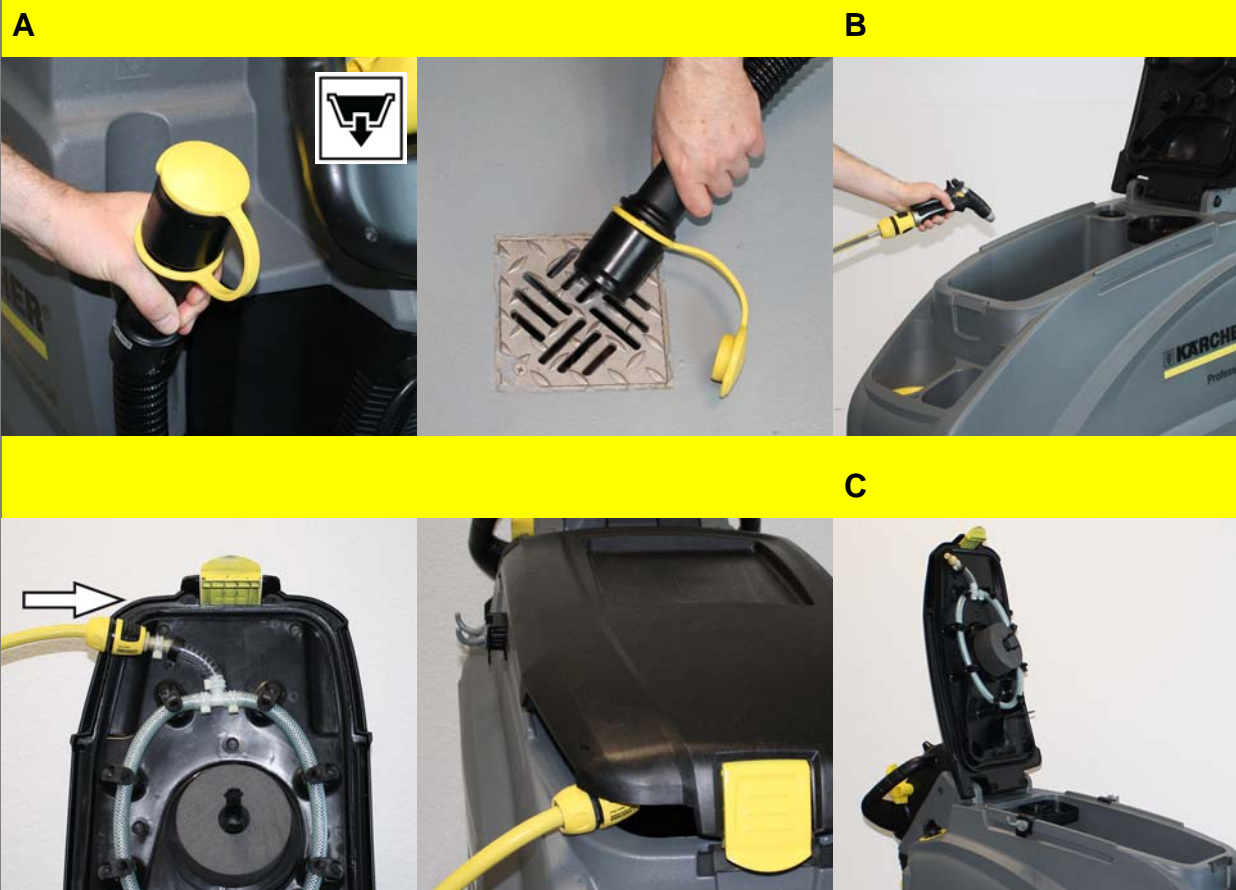
1



Shutting Down the Appliance

- A Close the regulatory button for setting the water quantity.
- B Set the program selection switch to suction or vacuuming.
Drive the appliance forward for another 1-2 m to draw off residual water.
- C Lift the cleaning head.
- D Release the safety switch.
- E Raise the vacuum bar.
- F Set the programme selector switch to "OFF".

2



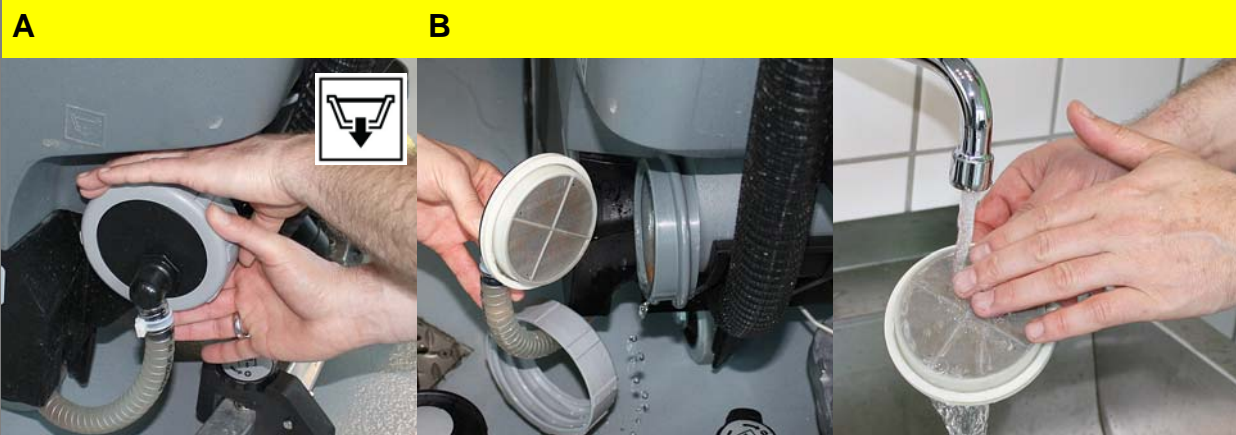
Emptying the Dirt Water Reservoir

⚠ Warning

Please observe the local provisions regarding the wastewater treatment.

- A Take the water discharge hose from the support and lower above a suited collection device.
Squeeze or kink the suction hose coupling sleeve.
Open wastewater hose cover.
Drain off the dirt water - regulate the water quantity by pressing or bending.
- B Rinse the wastewater reservoir with clean water or with the rinsing system for the wastewater reservoir (option).
- C Leave the cover open to let it dry.
or
Press the lock of the wastewater reservoir in and close the cover of the wastewater reservoir so that a gap remains open to facilitate drying.

3



Emptying the Fresh Water Tank

⚠ Warning

Please observe the local provisions regarding the wastewater treatment.

- A Loosen the lid for emptying the fresh water - do not remove it fully. Drain water.
- B To rinse the fresh water reservoir, remove the cover completely and remove the fresh water filter.
Check fresh water filter; clean if required.

Finish operation

4

A



Empty waste container (only with R cleaning head)

A Remove bulk waste container and empty it.

5

A



Charging battery

A Charge the battery if required.

Maintenance and care

daily

monthly

Kärcher Customer Service

1

A



B



⚠ Warning

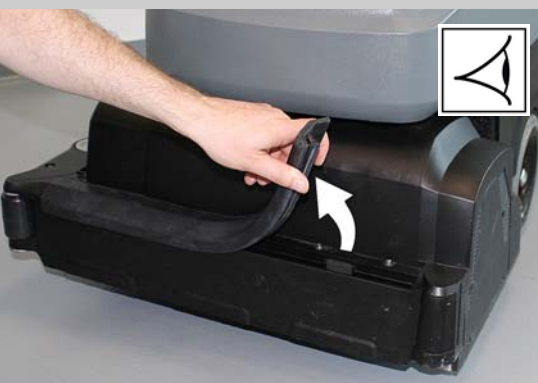
Risk of damage. Do not wash down the appliance with water and do not use aggressive detergents.

A Remove the coarse dirt sieve from the wastewater reservoir and clean it.

B Check the fluff filter, clean if required.

2

A



A Remove the water distribution bar on the cleaning head and clean the water channel.

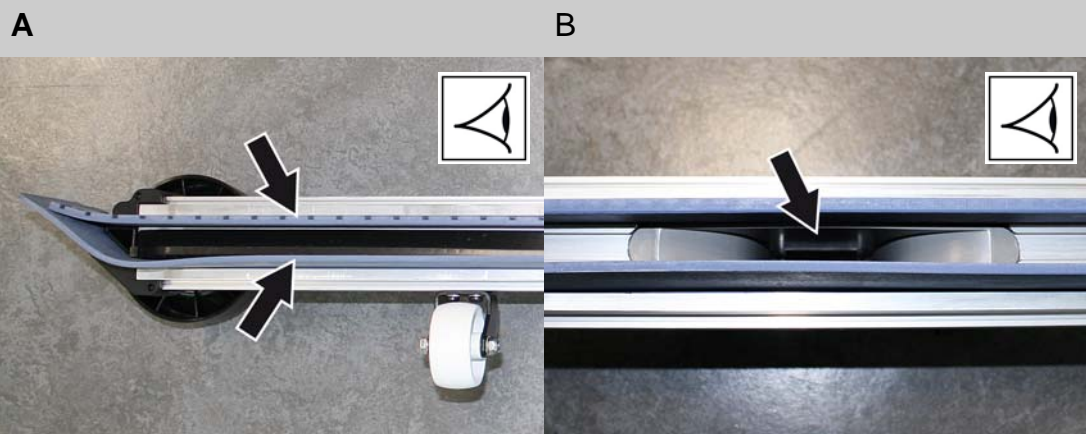
Maintenance and care

daily

monthly

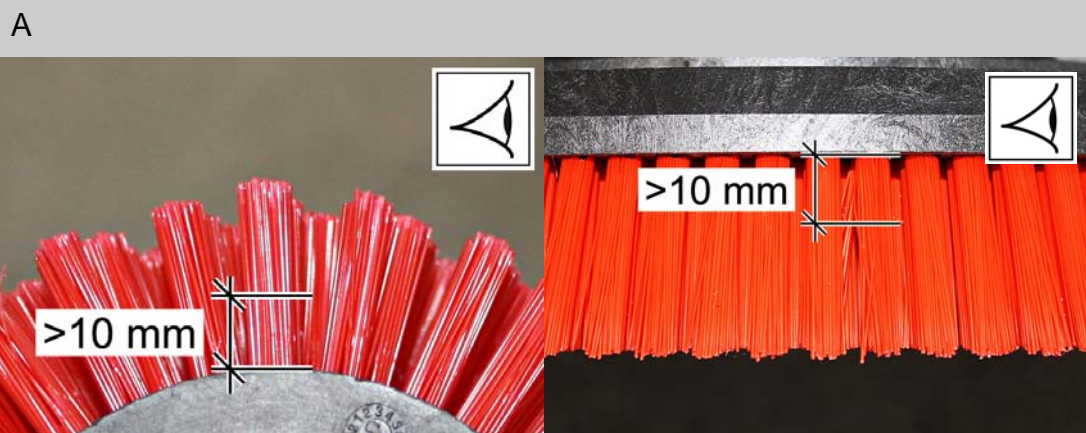
Kärcher Customer Service

3



- A Clean the vacuum lips and the wiping lips, check for wear and replace if required.
- B Clean the suction channel.

4



- A Clean brush. Check the brushes for wear, replace if required.
- B Clean the outside of the appliance with a damp cloth which has been soaked in mild detergent.

5



- A Clean the seals between dirt water reservoir and cover and check for tightness, replace if required.
- B Clean the brush tunnel (only BR model).

6

Have annual customer service work performed.