



Spare Parts List

CV86
1.012-596.0

CVC86
1.012-597.0

CVI86
1.012-600.0

Chariot 3 - CV 86/1 RS Bp

How to Use this Spare Parts List

The PARTS LIST section contains assembled parts illustrations and corresponding parts list. The parts lists include a number of columns of information:

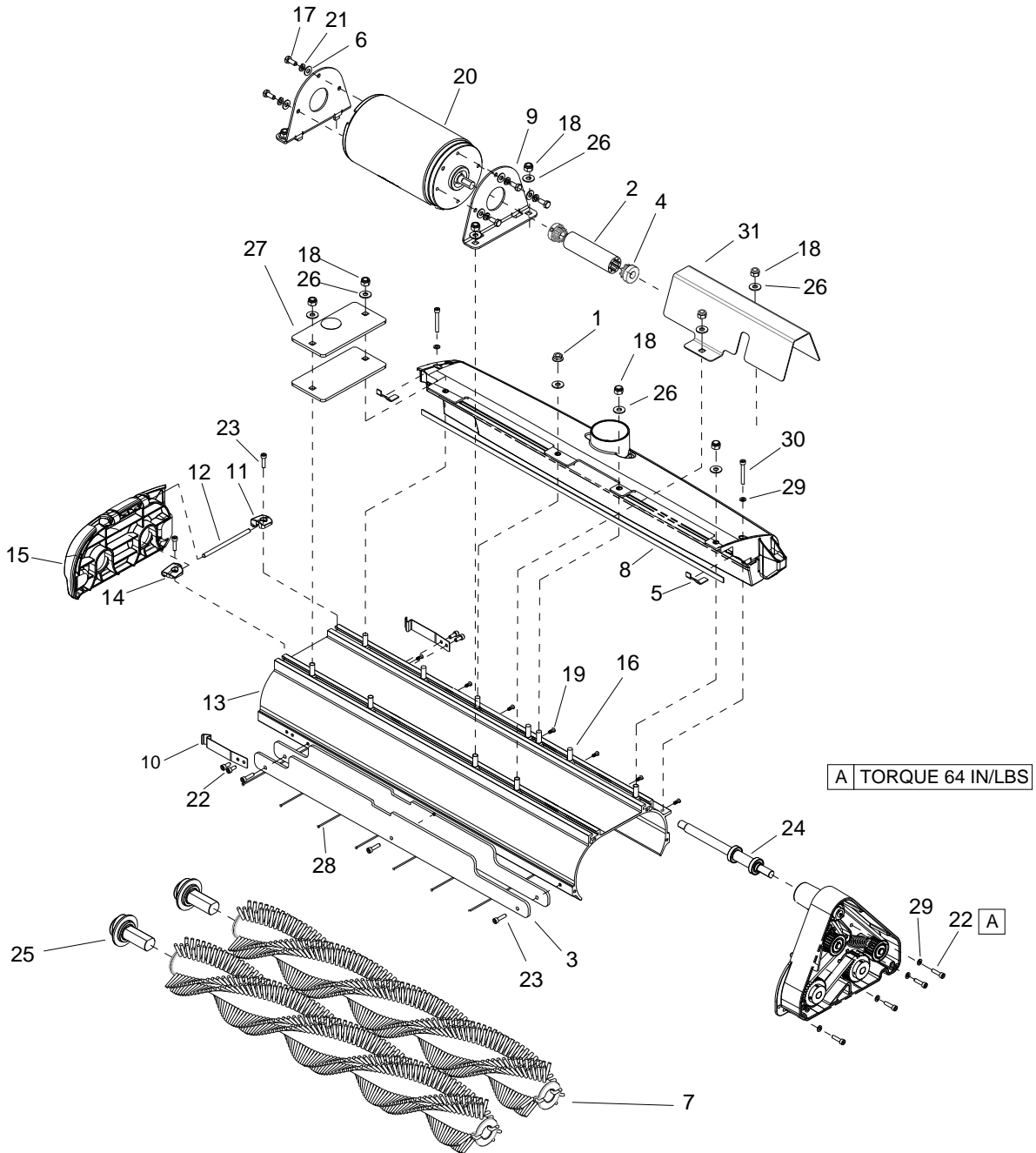
- REF - column refers to the reference number on the parts illustration.
- PART NO. - column lists the part number for the part.
- QTY - column lists the quantity of the part used in that area of the machine.
- DESCRIPTION - column is a brief description of the part.
- SERIAL NO. FROM - If this column has an (*) and a Reference number, see the SERIAL NUMBERS page in the back of your manual. If column has two asterisk (**), call manufacturer for serial number. The serial number indicates the first machine the part number is applicable to. The main illustration shows the most current design of the machine. When a boxed illustration is shown, it displays the older design.
- NOTES - column for information not noted by the other columns.

NOTE: *If a service or option kit is installed on your machine, be sure to keep the KIT INSTRUCTIONS which came with the kit. It contains replacement parts numbers needed for ordering future parts.*

How to Use this Spare Parts List	2
Table of Contents	3
Brush Deck	4
Brush Deck - Debris Tray	6
Brush Deck Drive	8
Brush Deck Lift	10
Brush Deck Lift Mounting	12
Brush Deck Mounting	14
Brush Deck - Side Broom	16
Bumper	18
Control Panel - Lower	20
Control Panel - Upper	22
Control Panels Mounting	24
Decals	26
Frame	28
Front Drive	30
Main Housing	32
Platform & Mounting	34
Platform & Wheels	36
Rear Cover	38
Steering	40
Vacuum	42
Wiring - Batteries 1 - (1.012-596.0, 1.012-597.0) ..	44
Wiring - Batteries 2 - (1.012-600.0)	46
Wiring - Components	48
Wiring 1	50
Wiring 2	52
Wiring 3	54
Wiring 4	56
Wiring 5	58
Wiring 6	60

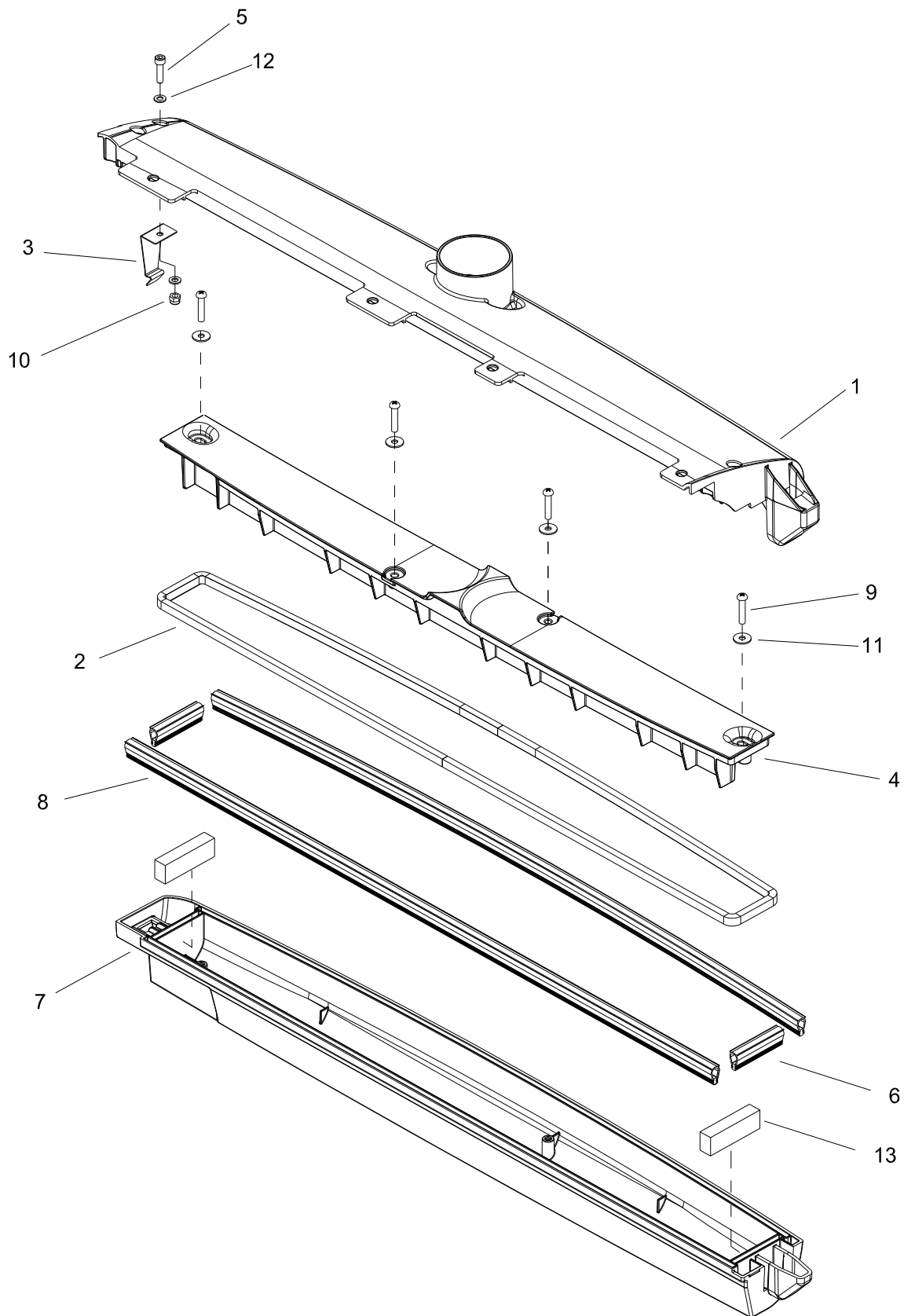
Options

Battery Exchange - 1	64
Battery Exchange - 2	66
Battery Exchange - 3	68
Onboard Charger	70
Serial Number	72
Notes	73



REF	PART NO.	QTY	DESCRIPTION	SERIAL NO. FROM	NOTES
1	86005740	1	NUT 5/16-18 SERRATED FLG		
2	86370480	1	SLEEVE, 17SH 4.09", HYTREL, GRN		
3	86414300	2	PLATE, COUNTERBALANCE		
4	86370470	2	HUB, COUPLING, 18ES 1/2" D-BORE		
5	86343190	2	GASKET, 1/16THKX3/8WX2.17L		
6	86010630	6	WASHER, 1/4 X 5/8 FLAT SS		
7	86340590	2	BRUSH, VACUUM , 4"OD, 28"L		
8	86340580	1	GASKET, .063 X .375 X 27.5		
9	86340490	2	BRKT, MOTOR MOUNT		
10	86340480	2	SPRING, DOOR CLIP		
11	86339980	1	CAP, BRUSH DOOR HINGE, REAR		
12	86339790	1	PIN, DOWEL, 6 X 106, SS		
13	86374900	1	EXTRUSION, DUAL 4" BRUSH, 28"		
14	86339590	1	CAP, BRUSH DOOR HINGE, FRONT		
15	86339580	1	DOOR, BRUSH RELEASE		
16	86277130	11	SCR, 5/16-18X1.00 CARRIAGE SS		
17	86273750	6	SCR, 1/4-20 X 5/8 HHCS SS		
18	86270830	11	NUT, 5/16-18 HEX NYLOCK SS		
19	86354280	7	NIPPLE, GUARD ATV		
20	86222130	1	MOTOR, 36VDC		
21	86173340	6	WASHER, SPLIT LOCK, 1/4, SS		
22	86172950	8	SCR, M5X12, SHCS, ISO4762, SS		
23	86014990	5	SCR, M5X20, SHCS, ISO4762, SS		
24	86012830	1	SHAFT ASM, DRIVE 24"		
25	86373070	2	ASM, BRUSH END, NON-DRIVE		
26	86010670	11	WASHER, 5/16 X 3/4 SS		
27	86345990	2	PLATE, WEIGHT, BRUSH DECK		
28	86354080	7	ROD, GUARD ATV		
29	86173350	6	WASHER, M5, FLAT, ISO7089, SS		
30	86343160	2	SCR, M5X40, SHCS, ISO4762, SS		
31	86413620	1	BRKT, SHAFT COVER		

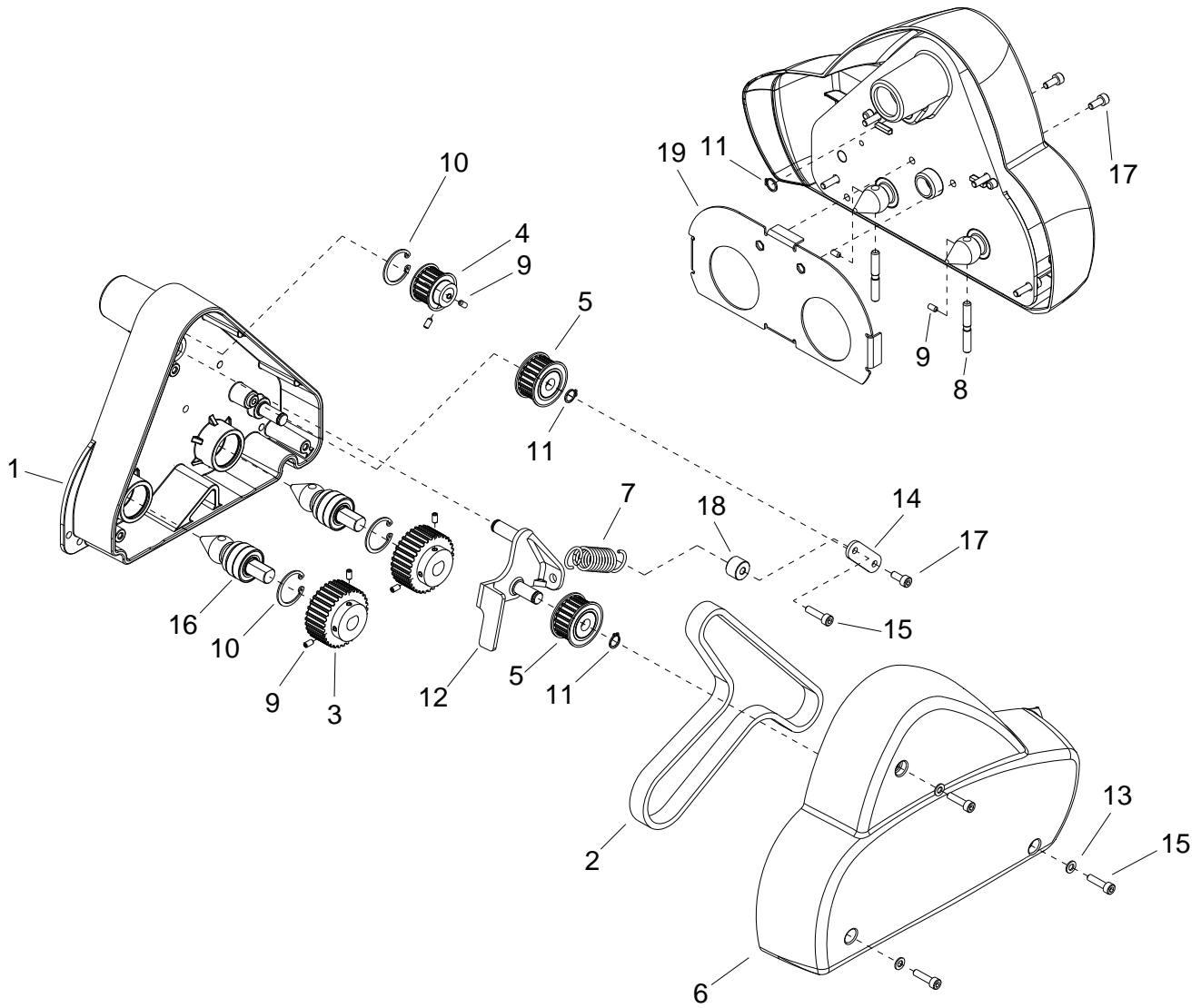
Brush Deck - Debris Tray



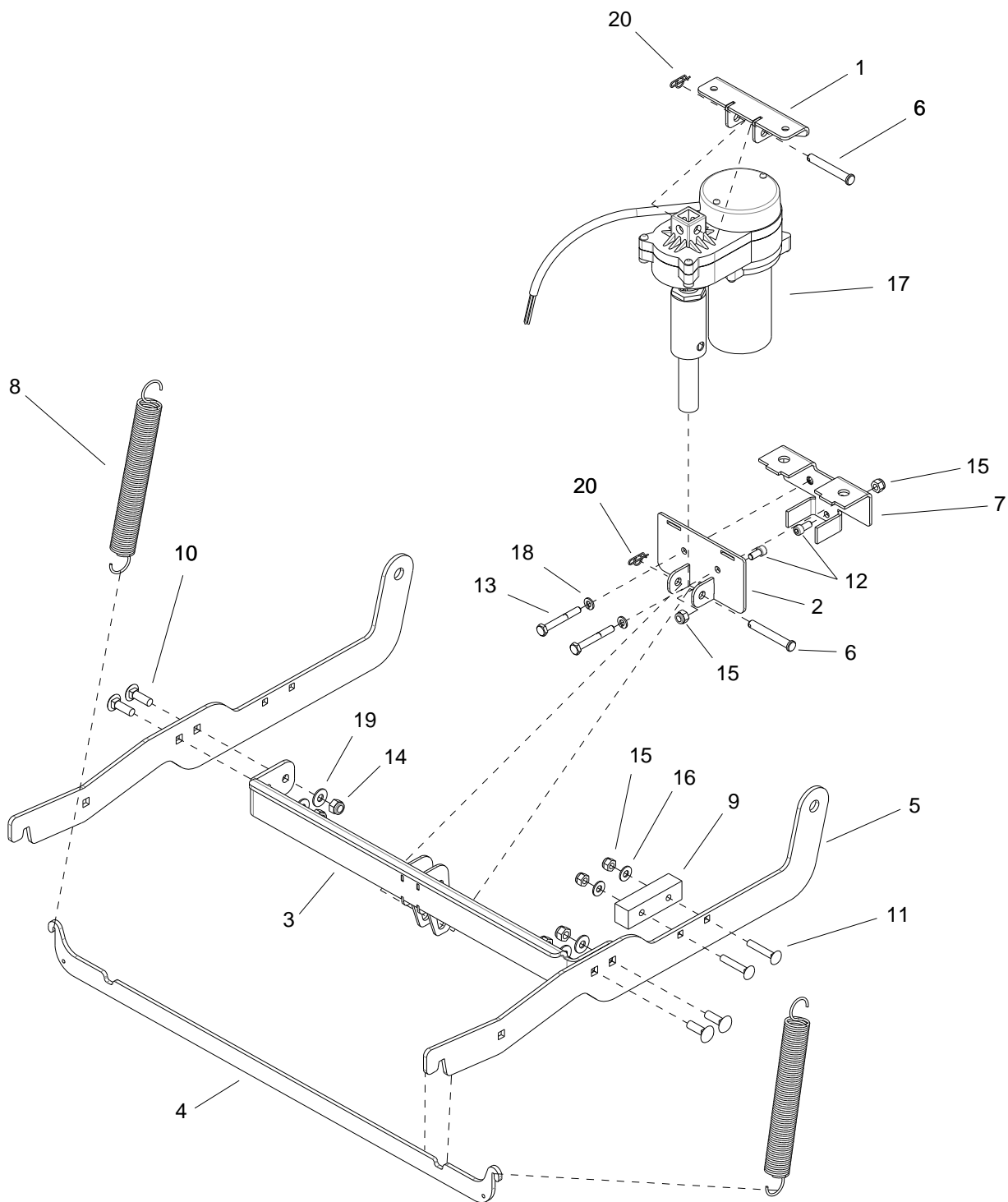
REF	PART NO.	QTY	DESCRIPTION	SERIAL NO. FROM	NOTES
1	86414020	1	MOUNT, DEBRIS TRAY, TRIMMED		
2	86410150	2	GASKET, DEBRIS BIN		*
3	86408760	1	CLIP, DEBRIS TRAY SPRING		**
4	86404110	1	INSERT, DEBRIS BIN		*
5	86014990	1	SCREW, M5-.8 X 20 SCHCS SS DIN912		**
6	86342400	2	GASKET, DEBRIS TRAY, END		*
7	86342120	1	TRAY, DEBRIS, 28"		*
8	86340570	2	GASKET, DEBRIS TRAY, 28"		*
9	86327910	4	SCREW, KA50 X 25 PTOVHS STL WN1412 ZNPLT		*
10	86024750	1	NUT, M5X.8 HEX NYLOCK SS DIN985		**
11	86173330	4	WASHER, M5 SS ISO7093		*
12	86173350	2	WASHER, M5 FLT SS ISO7089		**
13	86416780	2	GASKET, DEBRIS TRAY		*

* P/N 86387550, KIT, DEBRIS TRAY RETROFIT (CONTACT KARCHER NORTH AMERICA TECHNICAL SUPPORT FOR DETAILS)

** P/N 86387540, KIT, CLIP RETROFIT (CONTACT KARCHER NORTH AMERICA TECHNICAL SUPPORT FOR DETAILS)

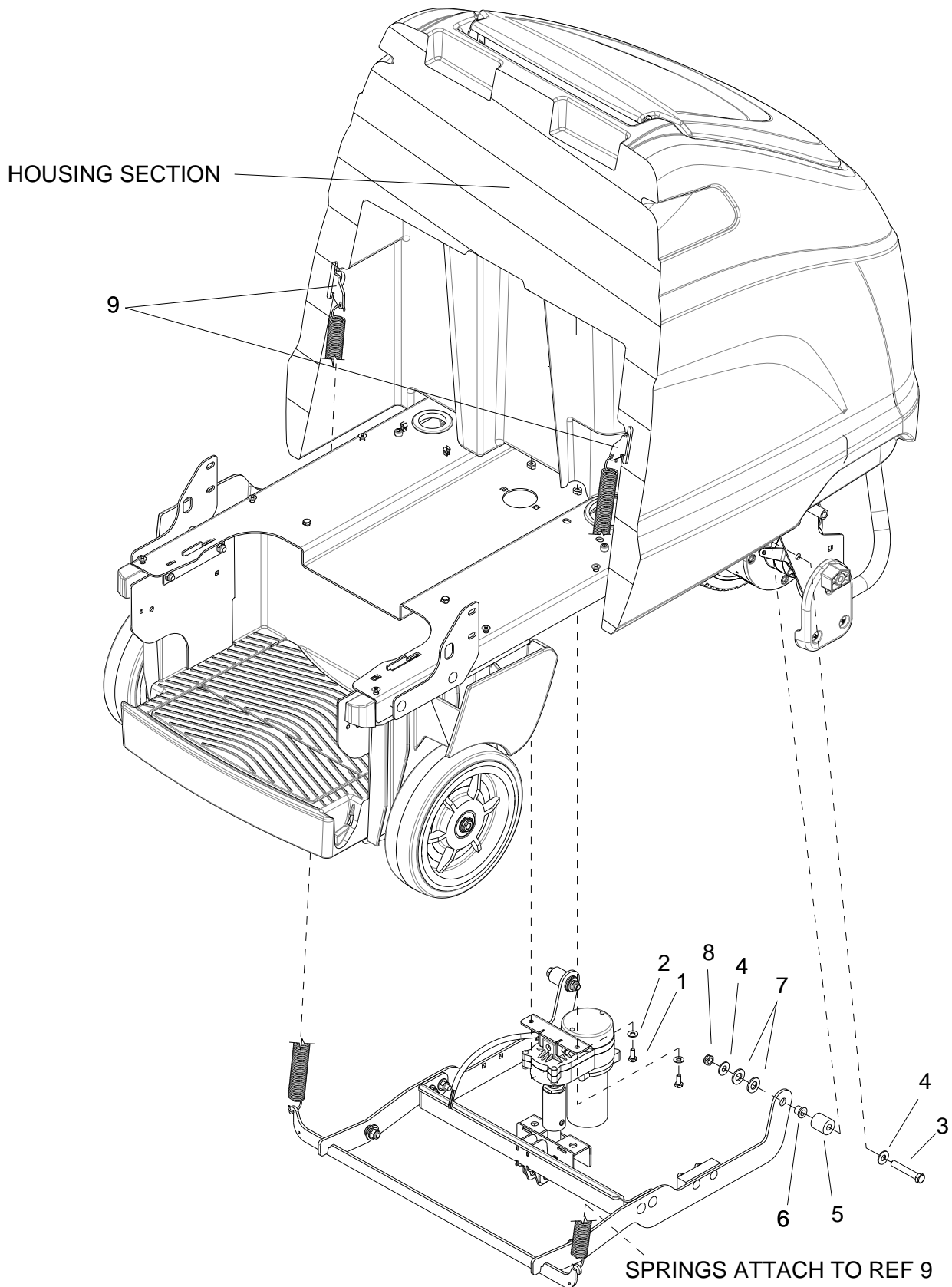


REF	PART NO.	QTY	DESCRIPTION	SERIAL NO. FROM	NOTES
1	86343870	1	HOUSING ASM, BRUSH DRIVE		
2	86343860	1	BELT, TWIN 5MM GT2, 15W, 130T		
3	86343850	2	PULLEY, 32T 5MM GT, 15W		
4	86343840	1	PULLEY, 18T 5MM GT, 15W		
5	86343830	2	PULLEY ASM, 22T 5MM GT, 15W		
6	86339570	1	COVER, DRIVE HOUSING		
7	86224660	1	SPRING, TENSIONER		
8	86224170	2	SHAFT, 6.2 MM BRUSH DRIVE		
9	86223780	8	SCR,M4X8,ISO4029,CP,BLK		
10	86223520	3	RING, 28MM INT SNAP PHOSPHATE		
11	86223490	3	RING, 10MM EXTERNAL SNAP		
12	86215870	1	BRKT, TENSIONER ARM		
13	86173350	3	WASHER, M5, FL, ISO7089, SST		
14	86349790	1	PLATE, SUPPORT		
15	86014990	4	SCR, M5X20, SHCS, ISO4762, SS		
16	86012790	2	SHAFT ASM, BRUSH DRIVE		
17	86172950	3	SCR, M5X12, SHCS, ISO4762, SS		
18	86349800	1	SPACER, 15.9OD X 5.3ID X 11L		
19	86349320	1	PLATE, BRUSH GUIDE		

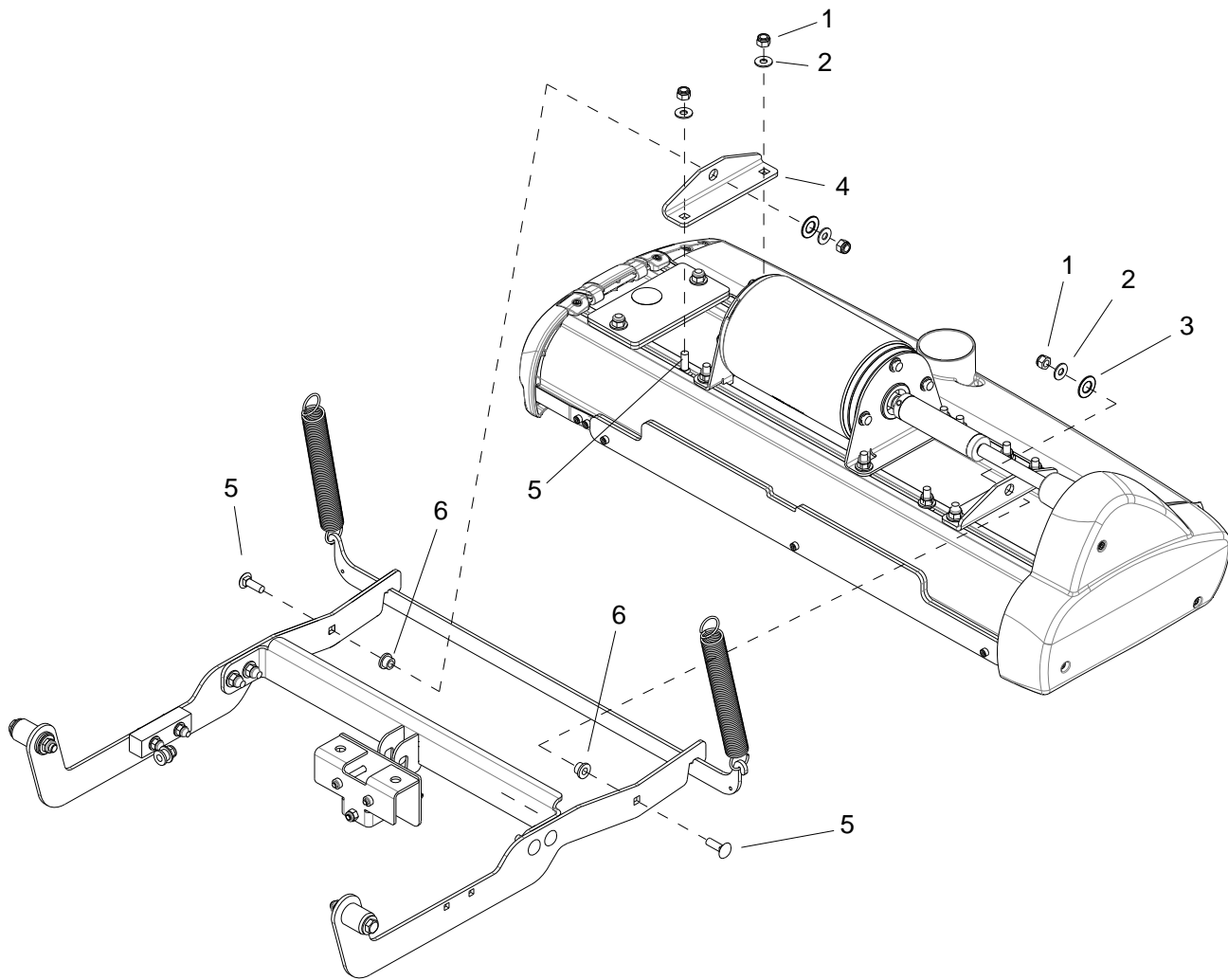


REF	PART NO.	QTY	DESCRIPTION	SERIAL NO. FROM	NOTES
1	86404390	1	BRACKET, MOUNT, ACTUATOR		
2	86404360	1	MOUNT, ACTUATOR		
3	86404330	1	BRACKET, CROSSBAR, DECK		
4	86404310	1	PLATE, LIFT, SPRING		
5	86404270	2	PLATE, DECK ARM		
6	86365440	2	PIN, CLEVIS 5/16 X 2.25 STL ZNPLT		
7	86361720	1	BRKT, ACT SPGS, DECK, CS26		
8	86346000	2	EXTENSION SPRING, 1.0 OD X 8.5L		
9	86344630	1	BLOCK, MOTOR LIFTER		
10	86277130	4	SCREW, 5/16-18 X 1 CARR SS		
11	86277000	2	SCREW, 1/4-20 X 1.5 CARR SS		
12	86274110	2	SCREW, 1/4-20 X .5 SCHCS SS		
13	86273850	2	SCREW, 1/4-20 X 2 HHCS SS		
14	86270830	4	NUT, 5/16-18 HEX NYLOCK SS		
15	86005810	4	NUT, 1/4-20 HEX NYLOCK SS		
16	86010630	2	WASHER, 1/4 SS		
17	86011950	1	ACTUATOR, 36VDC 3.5 STRK		
18	86010780	2	WASHER, 1/4 SPL STL ZNPLT		
19	86010670	4	WASHER, 5/16 FLT SS		
20	86008660	2	COTTER, 5/16" RING		

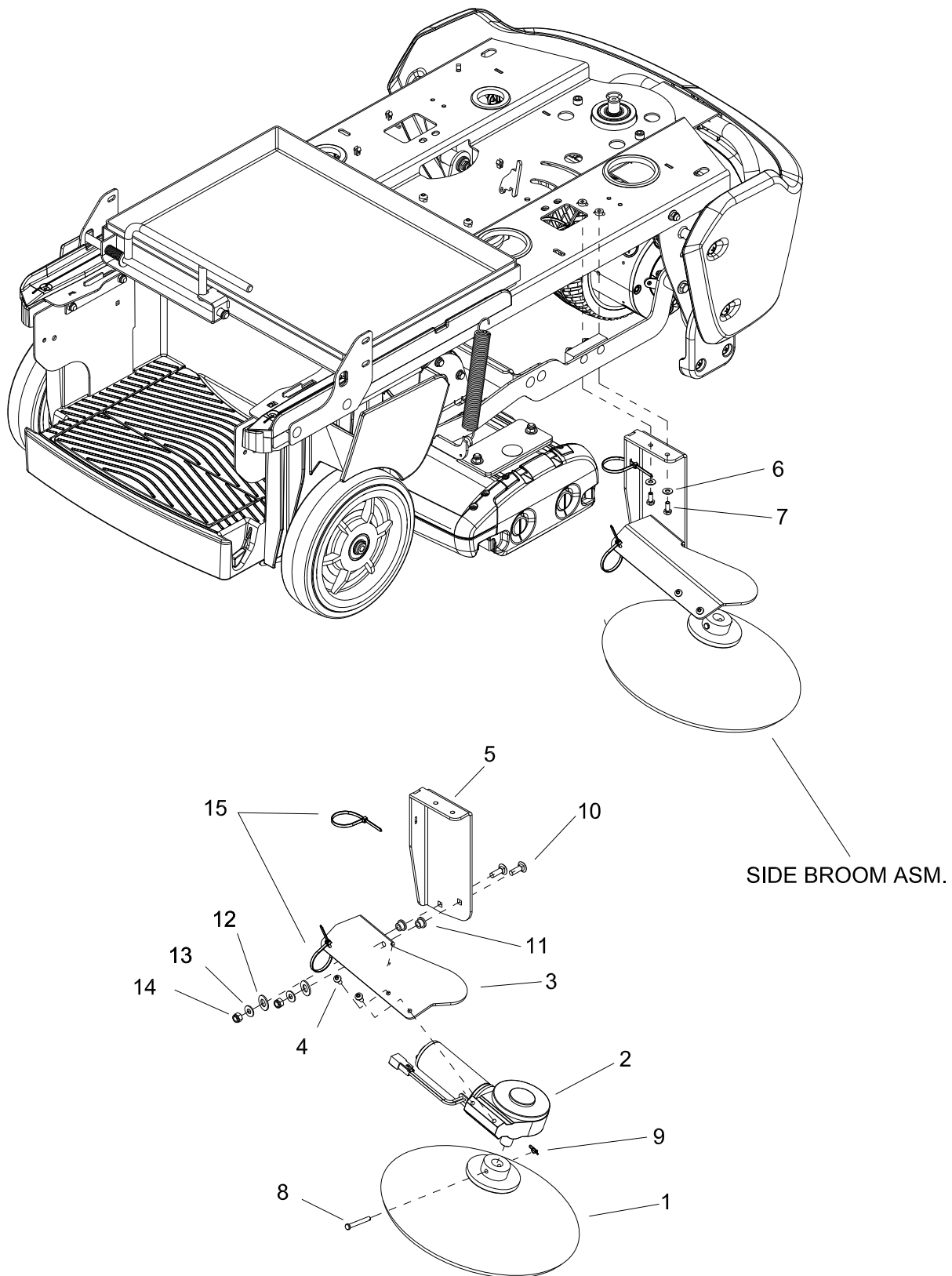
Brush Deck Lift Mounting



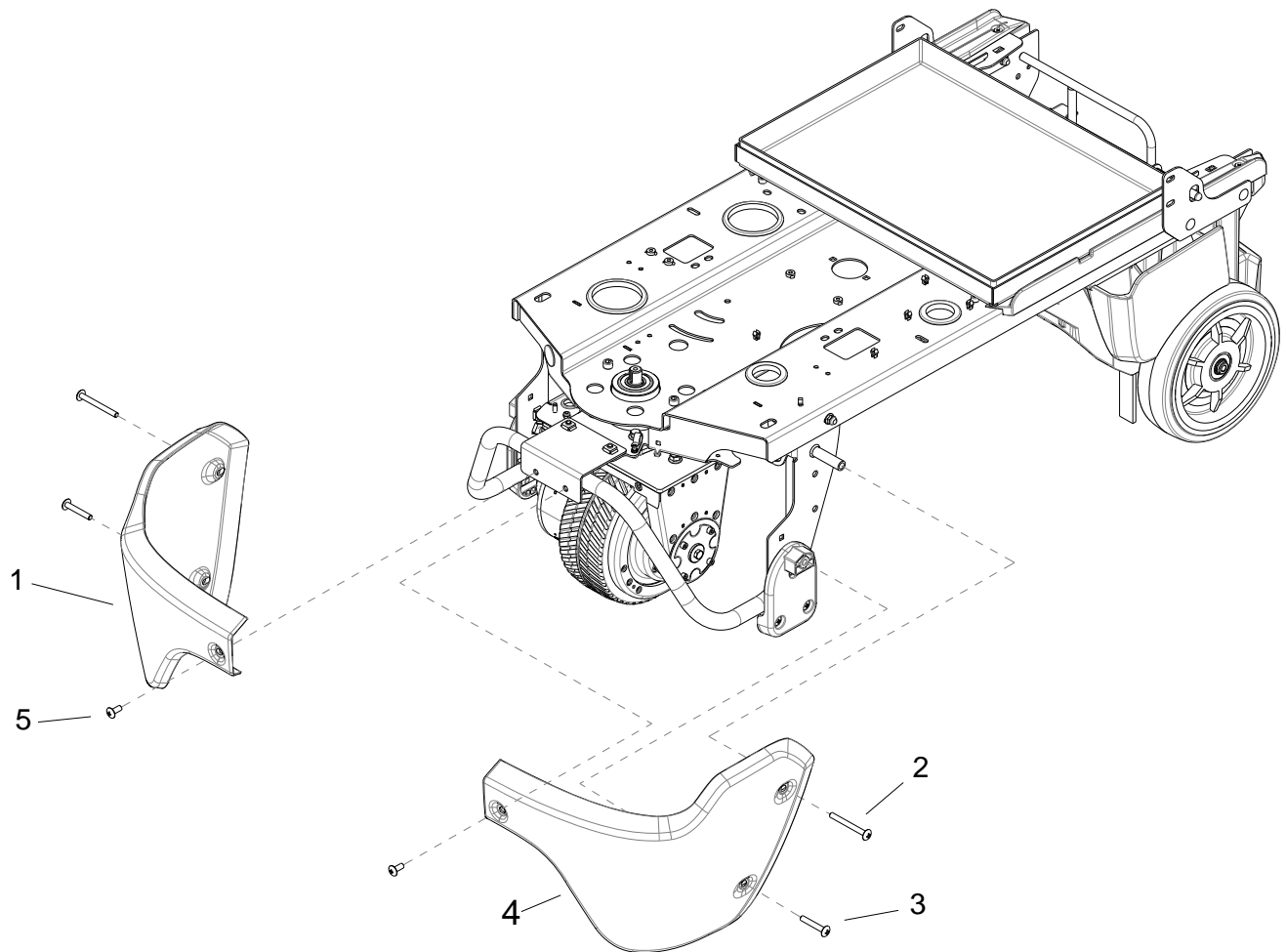
REF	PART NO.	QTY	DESCRIPTION	SERIAL NO. FROM	NOTES
1	86273750	2	SCREW, 1/4-20 X .625 HHCS SS NP		
2	86010630	2	WASHER, 1/4 SS		
3	86276470	2	SCREW, 3/8-16 X 2.25 HHCS SS		
4	86278910	4	WASHER, 3/8 SS		
5	86224380	2	SPACER, 1 OD X .391 ID X 1.063		
6	86229000	2	BUSHING, .377 X .502 X .5 FLG		
7	86259420	4	WASHER, .510 X 1 THR		
8	86005630	2	NUT, 3/8-16 HEXTHIN NYLOCK SS		
9	86354570	2	BRACKET, SPRING, UPPER		



REF	PART NO.	QTY	DESCRIPTION	SERIAL NO. FROM	NOTES
1	86270830	6	NUT 5/16-18 HEX NYLOCK SS		
2	86010670	6	WASHER 5/16 FLAT SS		
3	86259410	2	WASHER, .51 X 10 X .063 THR		
4	86341310	2	BRKT, BRUSH DECK PIVOT		
5	86277130	6	SCREW 5/16-18X1.00 CARRIAGE SS		
6	86228990	2	BEARING,FLNGD,.314ID X.502OD		

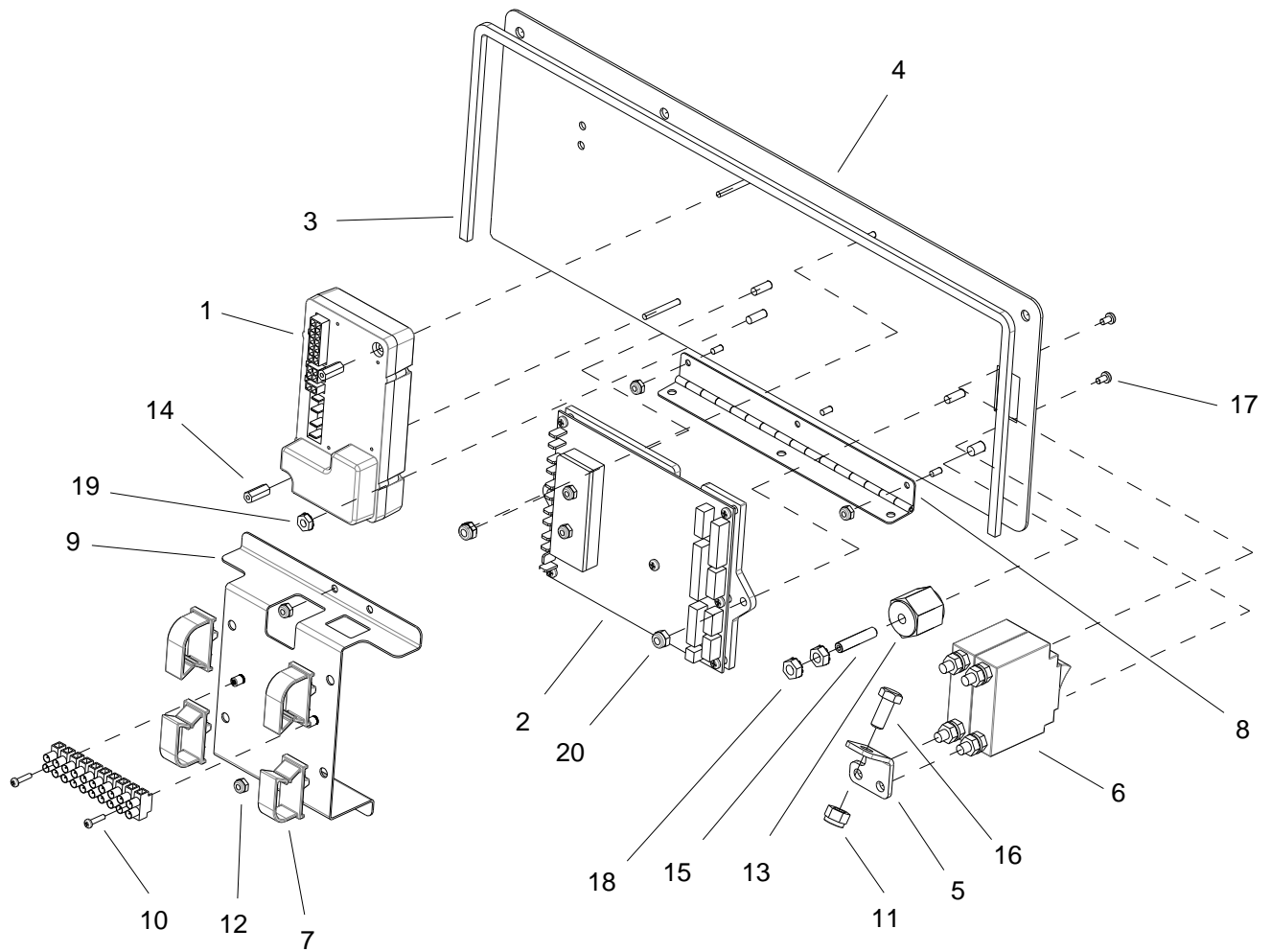


REF	PART NO.	QTY	DESCRIPTION	SERIAL NO. FROM	NOTES
1	86404670	1	BRUSH, 13 IN, NYLON, BLK		
2	86322470	1	MOTOR, 36VDC, 90 DEG. 1/16 HP		
3	86404320	1	BRACKET, MOUNT, SIDE BROOM		
4	86411990	2	SCREW, M6X1.0 X 16 TBTNHMS STL BLK ZNPLT		
5	86405990	1	BRACKET, SUPPORT, SIDE BRM		
6	86010630	2	WASHER, 1/4 SS		
7	86273750	2	SCREW, 1/4-20 X .625 HHCS SS NP		
8	86328040	1	PIN, CLEVIS 1/4 X 2 STL ZNPLT		
9	86008650	1	PIN, COTTER RING 1/4 X .041 X .844		
10	86277130	2	SCREW, 5/16-18 X 1 CARR SS		
11	86228990	2	BUSHING, .314 X .502 X .375 FLG BRZ		
12	86279380	2	WASHER, .518 X 1 X .08 NYL FLT		
13	86010670	2	WASHER, 5/16 FLT SS		
14	86270830	2	NUT, 5/16-18 HEX NYLOCK SS		
15	86264940	2	CABLE TIE, 11.38" UL/CSA		



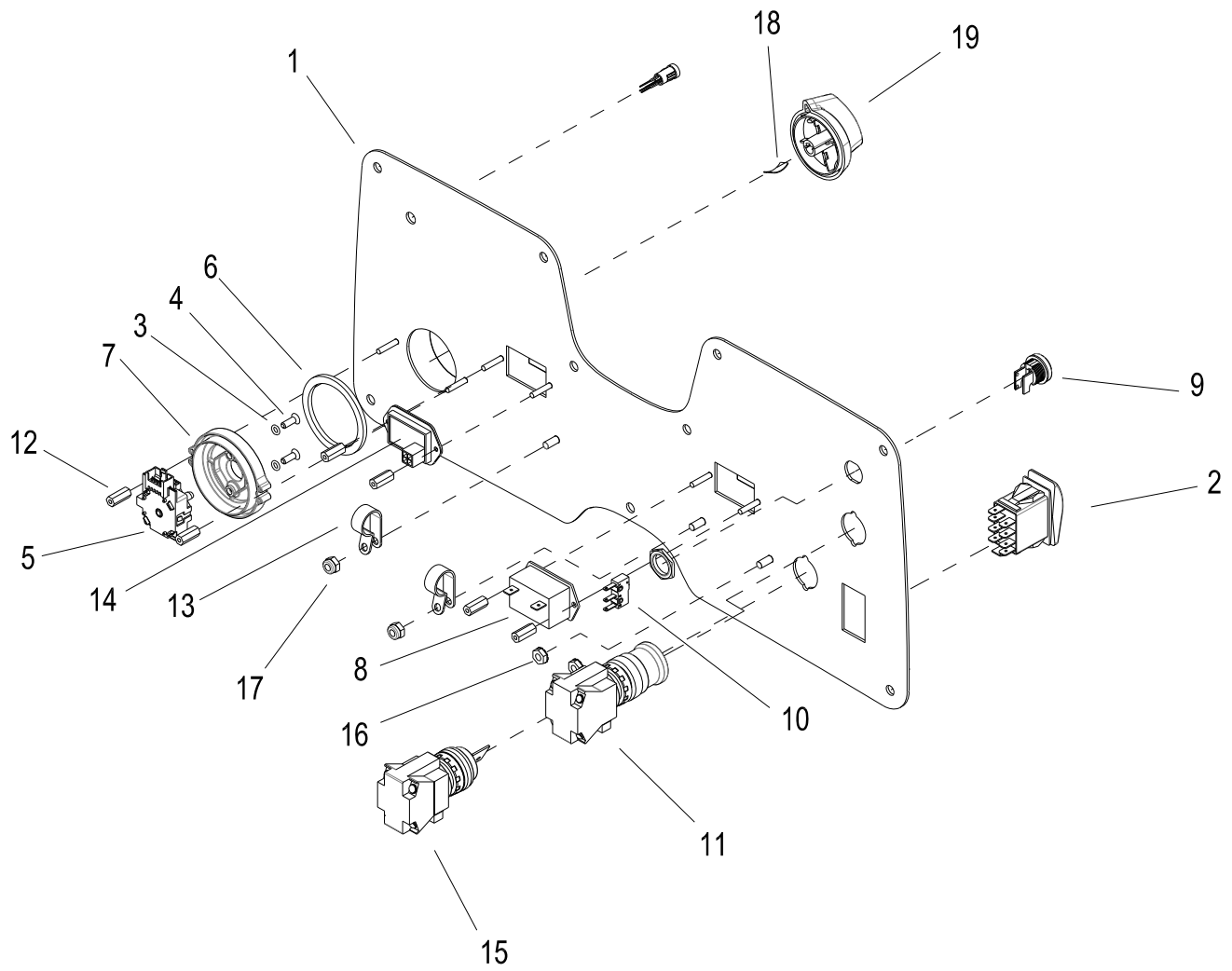
REF	PART NO.	QTY	DESCRIPTION	SERIAL NO. FROM	NOTES
1	86399640	1	BUMPER, RIGHT, BLK		
2	86361960	2	SCREW, 5/16-18 X 3 PHTRHMS SS		
3	86361950	2	SCREW, 5/16-18 X 2 PHTRHMS SS		
4	86358990	1	BUMPER, LEFT, BLACK		
5	86276890	2	SCREW, 5/16-18 X .75 PHTRHMS SS		

Control Panel - Lower



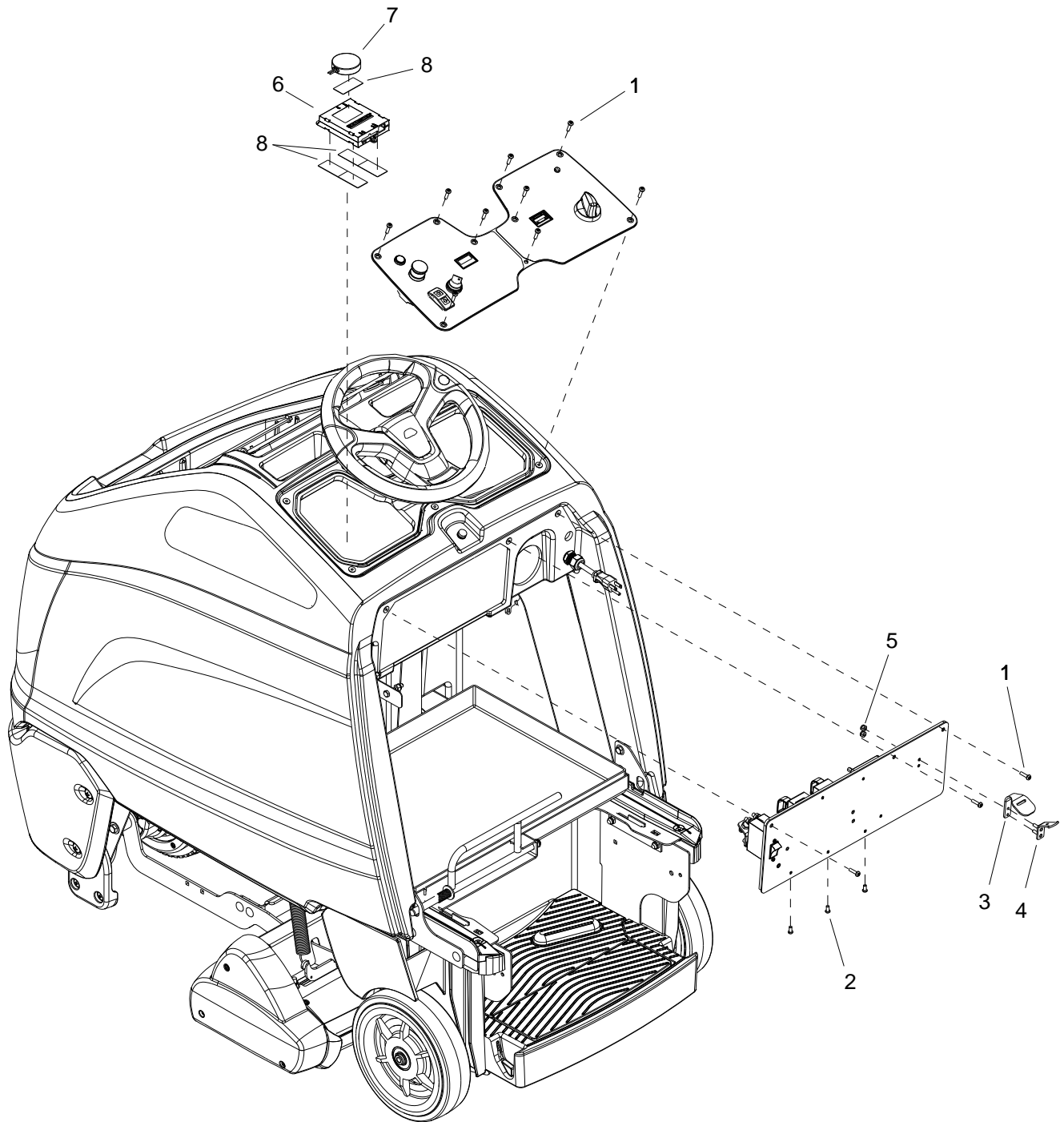
REF	PART NO.	QTY	DESCRIPTION	SERIAL NO. FROM	NOTES
1	86409760	1	CONTROLLER, I-DRIVE CV86		
2	86423540	1	KIT, PCB REPLACEMENT, CV86 TELEMATICS		
3	86408670	1	GASKET, .188 X .25 X 30.0		
4	86403660	1	PANEL, LOWER CONTROL, CV34		
5	86369480	1	BRKT, CABLE ATTACHMENT		
6	86369020	1	BREAKER, 60 AMP 2-POLE		
7	86361520	4	CLIP, CABLE ENTRY		
8	86361420	1	HINGE, PANEL		
9	86360880	1	COVER, CONTROL BOARD		
10	86275260	2	SCREW, 4-40 X .5 PHPNHMS STL ZNPLT		
11	86271910	1	NUT, 5/16-18 FLEX LK STL GRA CDPLT		
12	86270920	4	NUT, 6-32 HEX NYLOCK SS		
13	86255910	1	STANDOFF, 1/4-20 X 1.0 HEX INS		
14	86255900	2	STANDOFF, 6-32 X 5/8 HEX NYL		
15	86006850	1	SCREW, 1/4-20 X 1.25 SCHSET CP SS		
16	86006760	1	SCREW, 5/16-18 X .75 HHCS		
17	86006620	2	SCREW, 6-32 X .25 PHPNHMS SS		
18	86005710	2	NUT, 1/4-20 HEXSTRW LK STL ZNPLT		
19	86005700	1	NUT, 10-32 HEXSTRW LK STL ZNPLT		
20	86005640	2	NUT, 10-32 HEX NYLOCK STL GR2 ZNPLT		

Control Panel - Upper

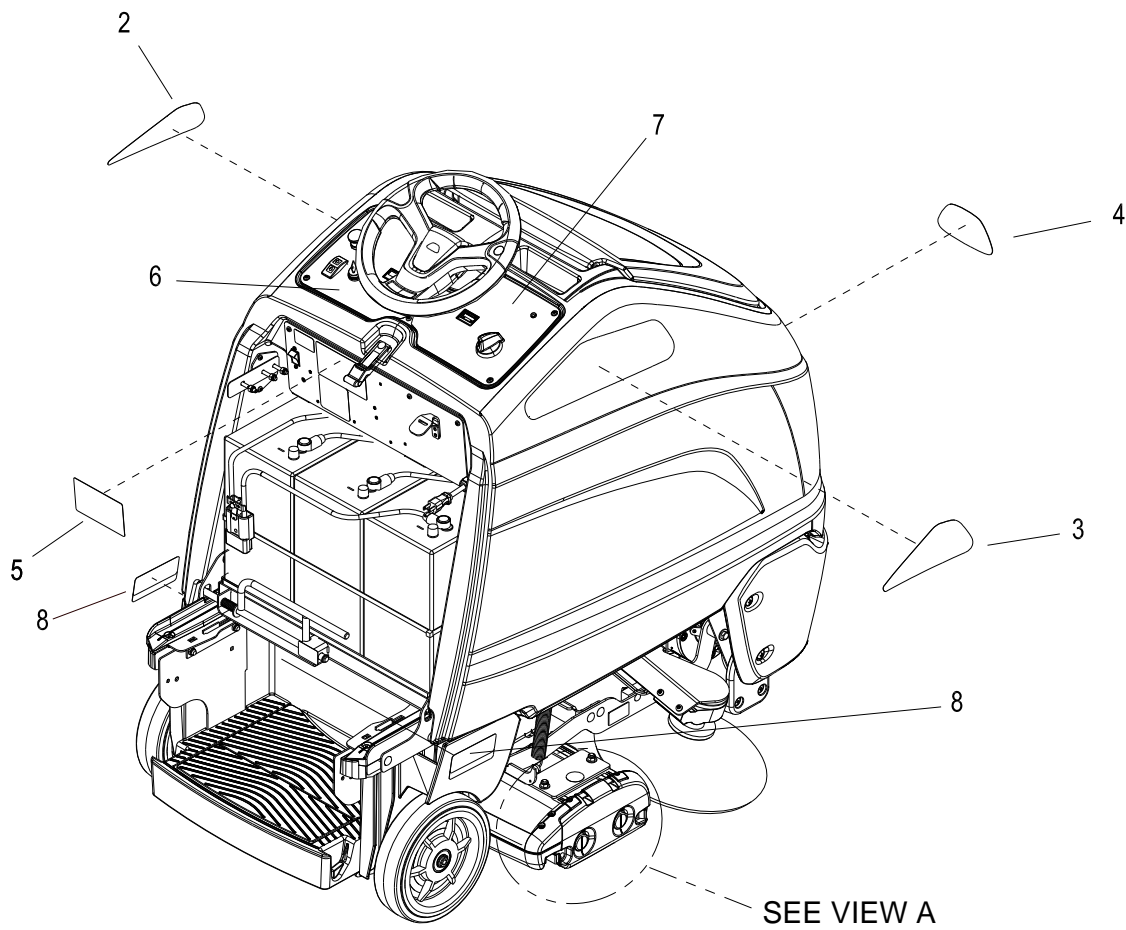


REF	PART NO.	QTY	DESCRIPTION	SERIAL NO. FROM	NOTES
1	86403670	1	PANEL, UPPER CONTROL, CV34		
2	86362590	1	SWITCH, SPDT 3 POSN MON, ARROW		
3	86358440	2	O-RING, 4MM ID, 1.5MM THK, BUNA-N		
4	86358430	2	SCREW, M4 X 12 FLHMS SS ISO7046 NP		
5	86354870	1	SWITCH, ROTARY		
6	86354810	1	GASKET, ROTARY SWITCH		
7	86354560	1	BEZEL, ROTARY SWITCH		
8	86315470	1	METER, HOUR ICD		
9	86295200	1	ASM, BUTTON, BLACK, W/BEZEL		
10	86292780	1	SWITCH, MICRO		
11	86292590	1	SWITCH, E-STOP AKW CHARIOT		
12	86255900	6	STANDOFF, 6-32 X 5/8 HEX NYL		
13	86198460	2	CLAMP, 5/8 NYLON UL/CSA		
14	86012670	1	METER, BATTERY, PG TRUE CHARGE		
15	86007190	1	SWITCH KEY DPST		
16	86005700	1	NUT, 10-32 HEXSTRW LK STL ZNPLT		
17	86005640	2	NUT, 10-32 HEX NYLOCK STL GR2 ZNPLT		
18	63130140	1	SPRING ELEMENT		
19	53217380	1	KNOB SELECTION		

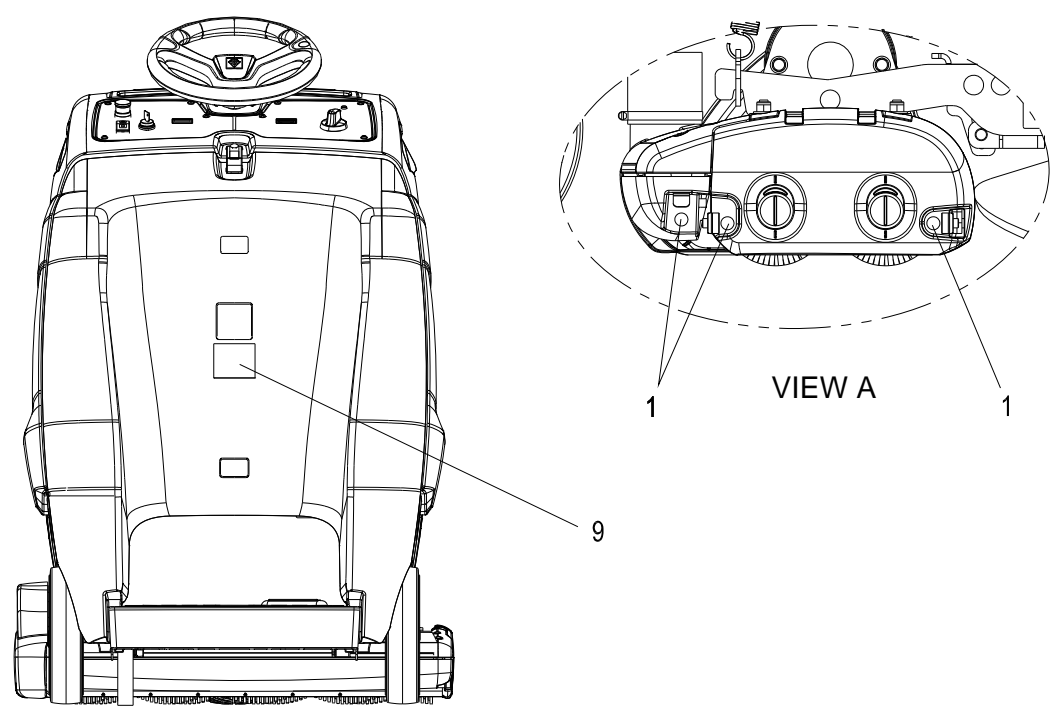
Control Panels Mounting



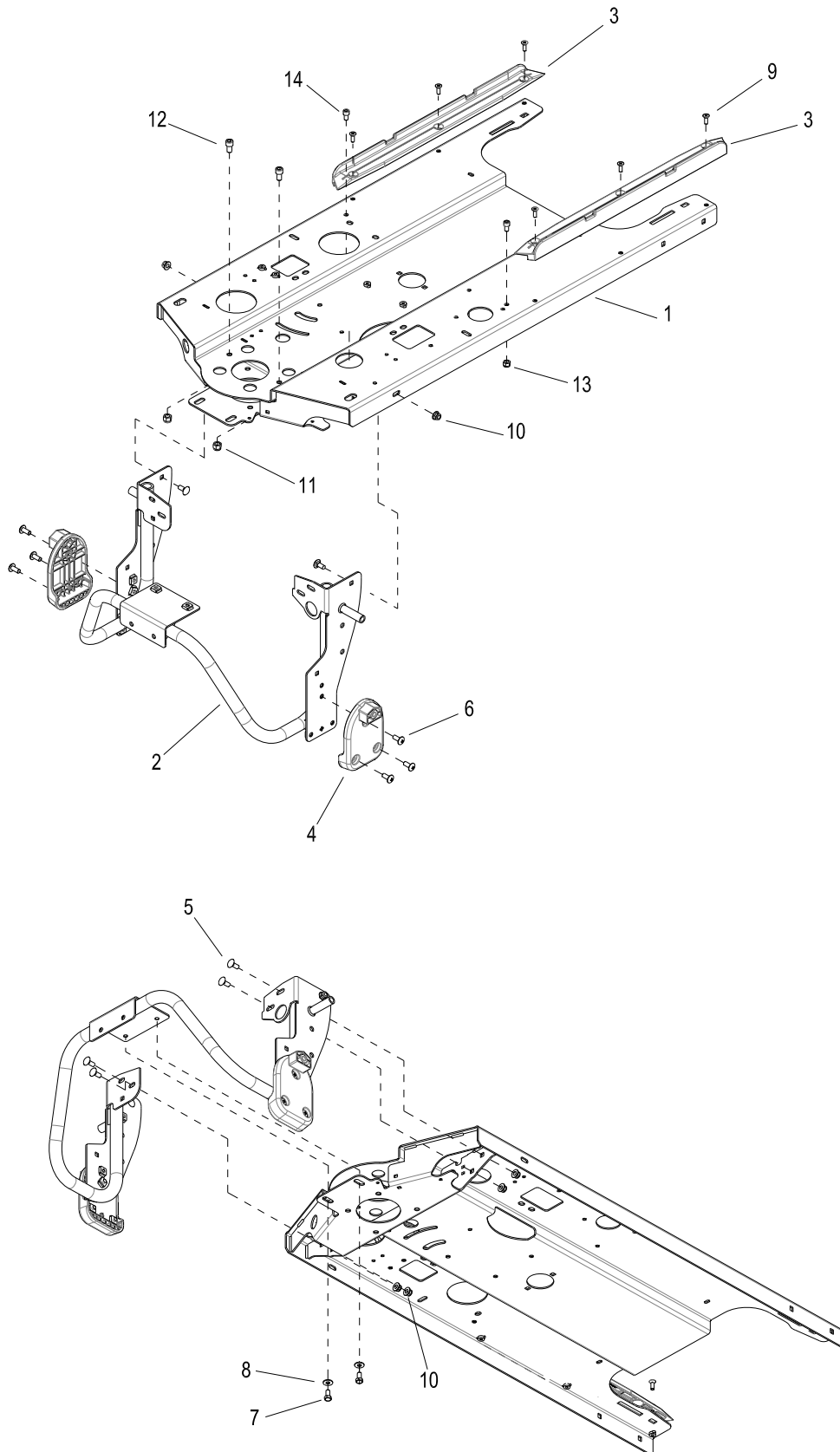
REF	PART NO.	QTY	DESCRIPTION	SERIAL NO. FROM	NOTES
1	86371410	12	SCREW, 10-32 X .75 TMS SS BLK		
2	86172980	3	SCREW, KA50 X 10 OVHCS STL WN1412 ZNPLT		
3	86361440	1	STRAP, CORD		OBC ONLY
4	86361430	1	BRKT, CORD		OBC ONLY
5	86005640	2	NUT, 10-32 HEX NYLOCK STL GR2 ZNPLT		OBC ONLY
6	46830270	1	FLEET MANAGEMENT MODULE WLAN + GLONASS		MOUNTED ON HOUSING WALL. NOT INCLUDED WITH 1.012-600.0
7	66820170	1	ANTENNA, FLEET MANAGEMENT MODUL 0,5M		NOT INCLUDED WITH 1.012-600.0
8	86415940	5	TAPE, 1/32" T X 1" W X 2" L 2SA		NOT INCLUDED WITH 1.012-600.0



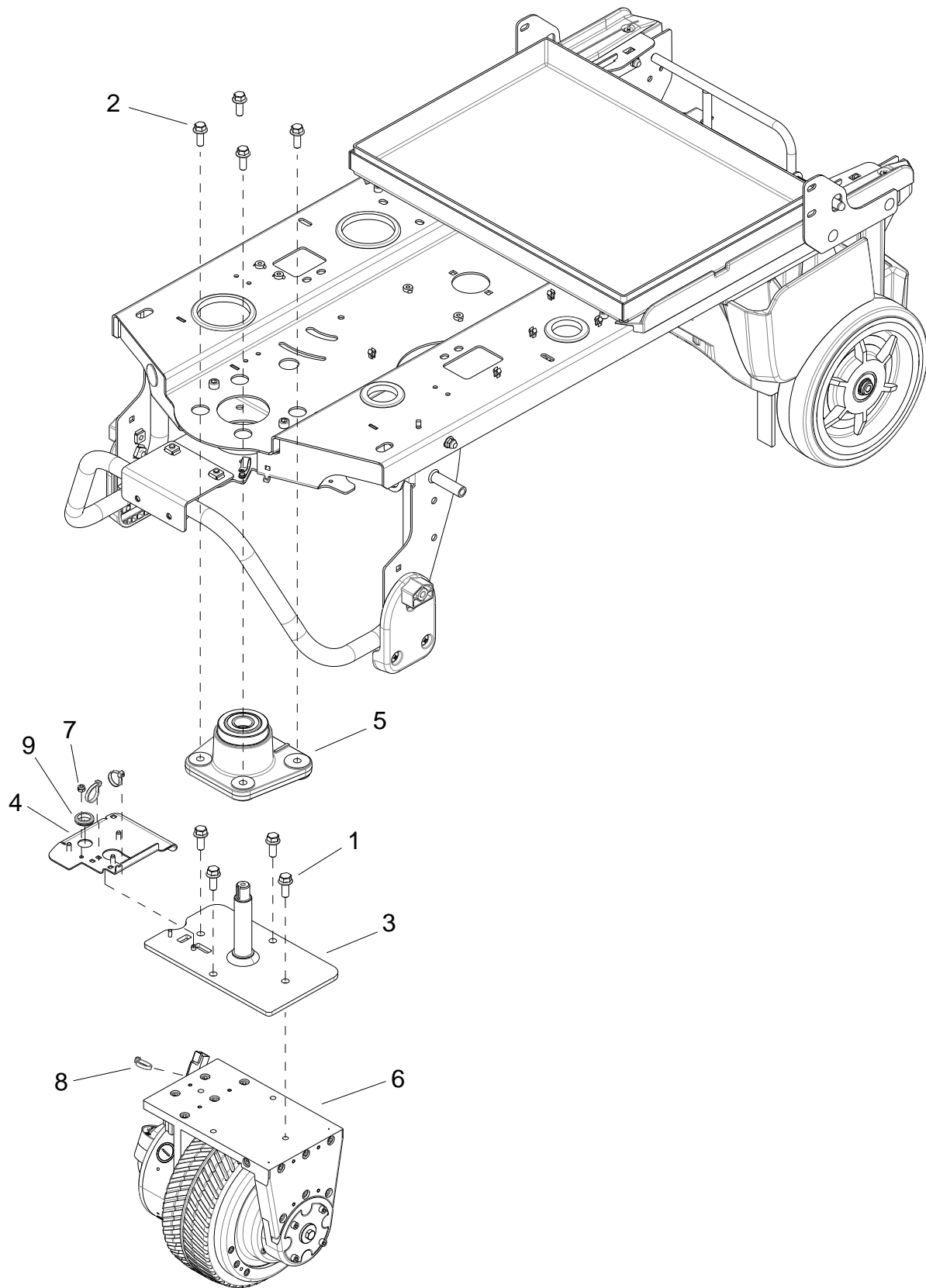
SEE VIEW A



REF	PART NO.	QTY	DESCRIPTION	SERIAL NO. FROM	NOTES
1	86409210	3	LABEL, YELLOW MAINTENANCE		
2	86409190	1	LABEL, IVAC-34, SIDE, LEFT		
3	86409180	1	LABEL, IVAC-34, SIDE, RIGHT		
4	86395400	1	LABEL, WINDSOR LOGO DOMED		
5	86362940	1	LABEL, BATTERY CABLING		
6	86395410	1	LABEL, CS26, CONTROL, LEFT		
7	86409200	1	LABEL, IVAC-34, CONTROL, RIGHT		
8	86334860	2	LABEL, HEPA FILTRATION		
9	86415350	1	LABEL, CRI, BRONZE		

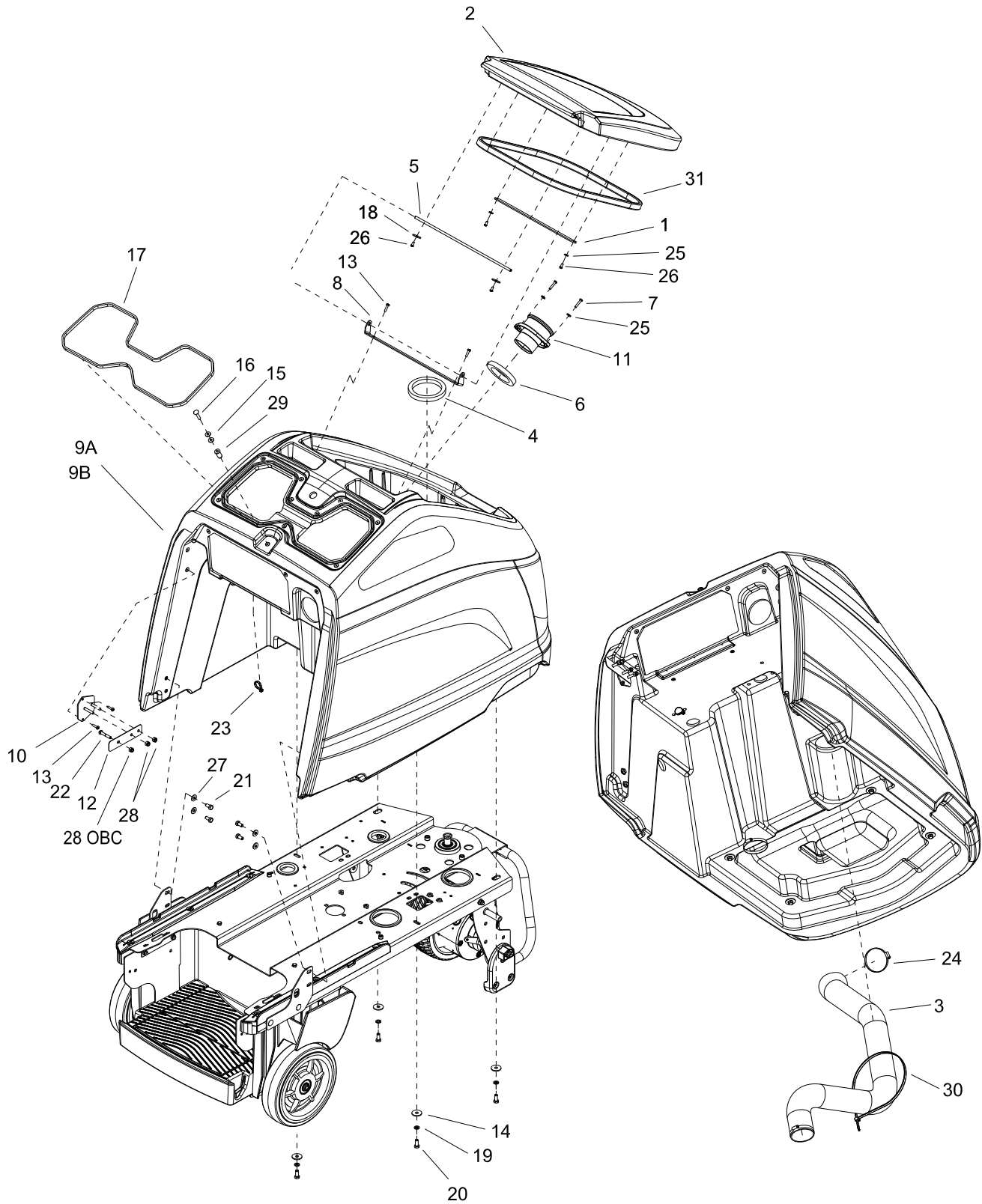


REF	PART NO.	QTY	DESCRIPTION	SERIAL NO. FROM	NOTES
1	86403680	1	FRAME, CV86		
2	86360710	1	ASM, WHEEL GUARD		
3	86358190	2	GLIDE, BATTERY TRAY		
4	86357950	2	PAD, TIP		
5	86276070	6	SCREW, 5/16-18 X .75 CARR SS		
6	86276890	6	SCREW, 5/16-18 X .75 PHTRHMS SS		
7	86276490	2	SCREW, 5/16-18 X .625 HHCS SS		
8	86010670	2	WASHER, 5/16 FLT SS		
9	86400810	6	SCREW, 1/4-20 X .75 PHFLHMS SS		
10	86368240	6	NUT, 5/16-18, FLG NYLOCK SS		
11	86005770	2	NUT, 3/8-16 HEX NYLOCK STL GR2 ZNPLT		
12	86361210	2	SCREW, 3/8-16 X .625 SCHCS STL BLKOX		
13	86270830	2	NUT, 5/16-18 HEX NYLOCK SS		
14	86006640	2	SCREW, 5/16-18 X .5 SCHCS ZN NP		

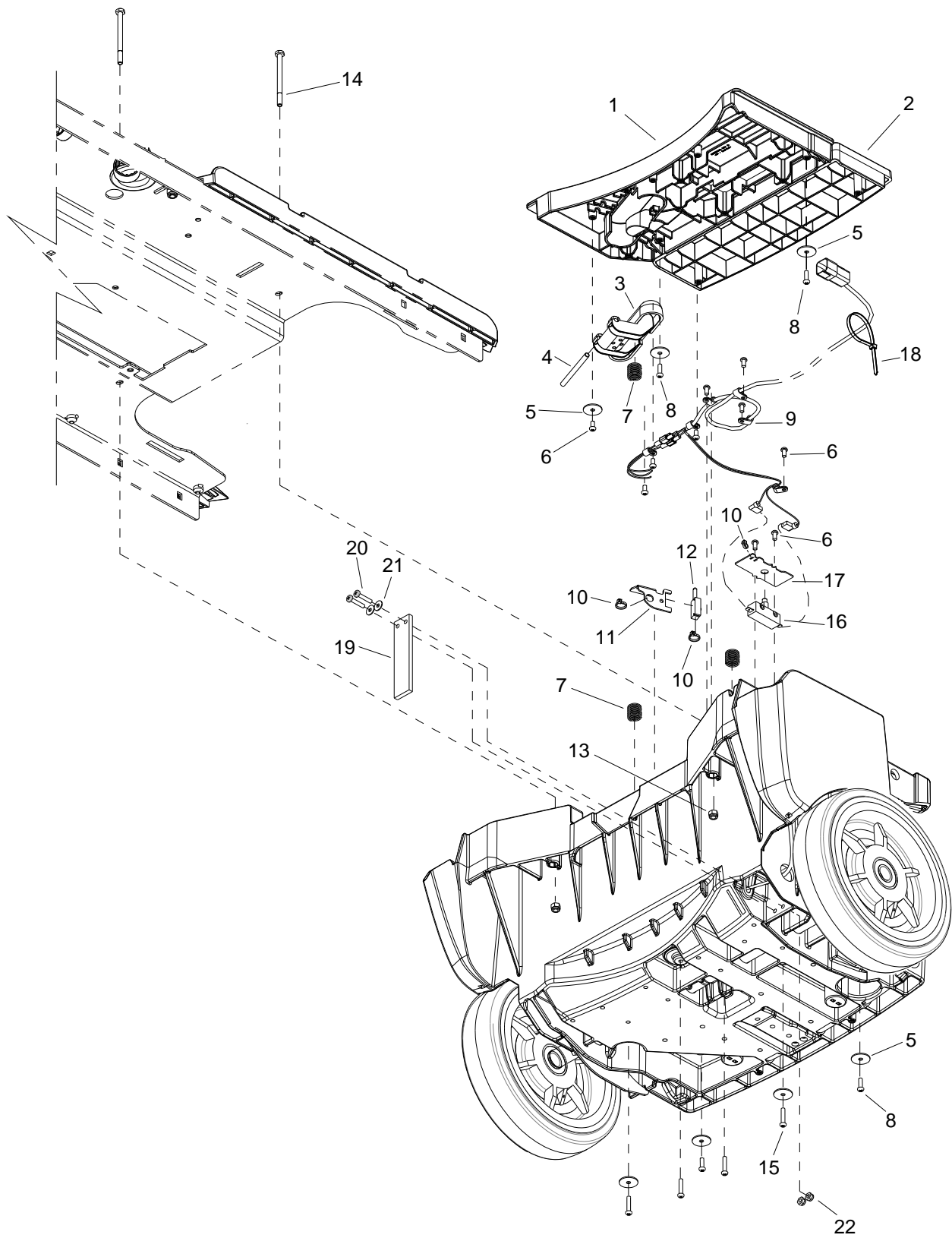


REF	PART NO.	QTY	DESCRIPTION	SERIAL NO. FROM	NOTES
1	86366140	4	SCREW, M10-1.25 X 25 HWHCS		
2	86366130	4	SCREW, 3/8-16 X 1 HWHCSSERFLG GR8		
3	86364130	1	ASM, SHAFT DRIVE MOTOR		
4	86361070	1	BRKT, WIRING, DRIVE UNIT		
5	86357870	1	ASM, BEARING BLOCK, FRT DRIVE		
6	86357120	1	DRIVE WHEEL, 36VDC		
7	86270990	1	NUT, 10-32 HEX NYLOCK SS		
8	86264940	3	CABLE TIE, 11.38" UL/CSA		
9	86218360	1	GROMMET, 3/4 ID X 7/8 GROOVE		
10	86426030	1	O-RING, DRIVE MOTOR		NOT SHOWN

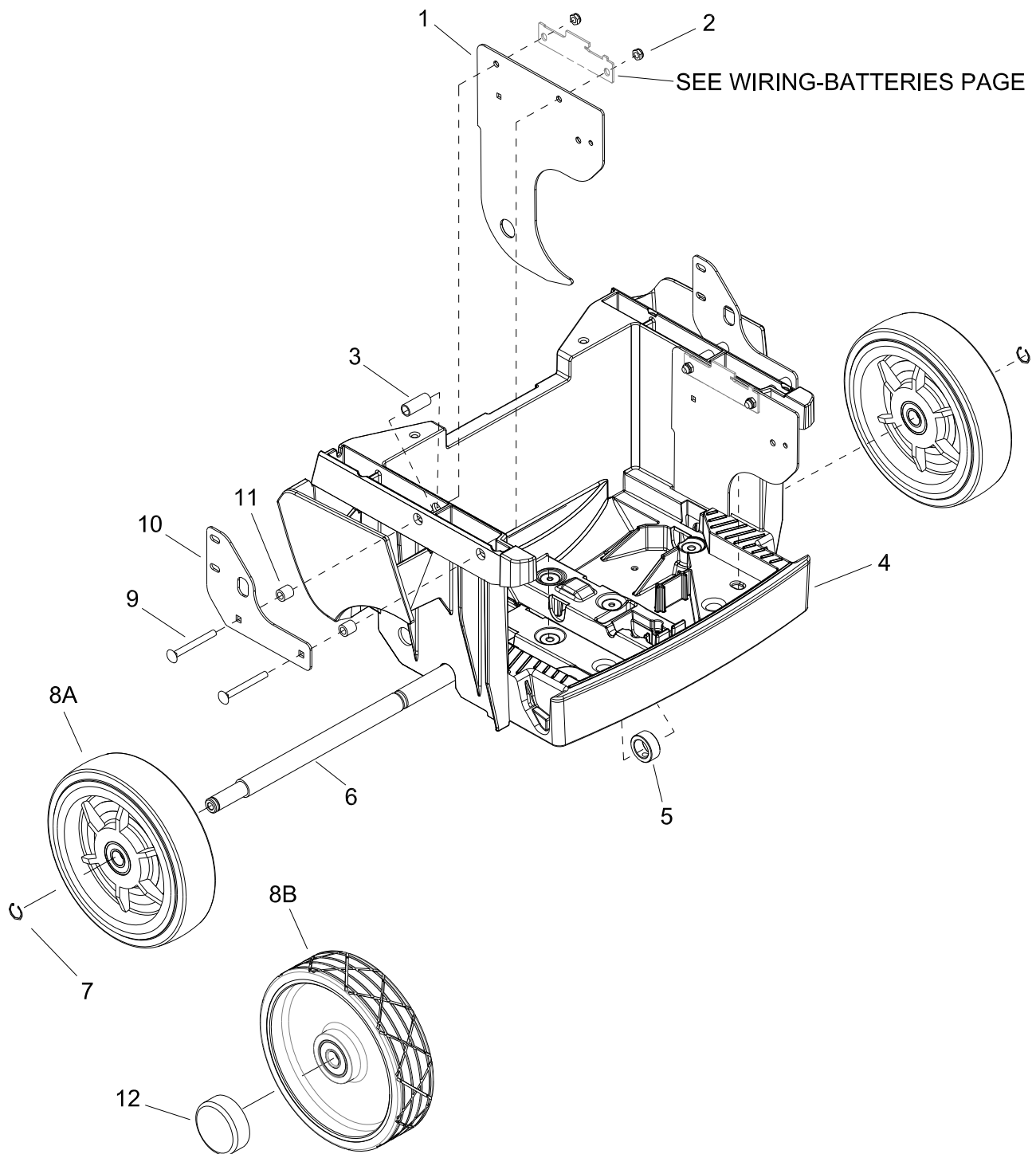
Main Housing



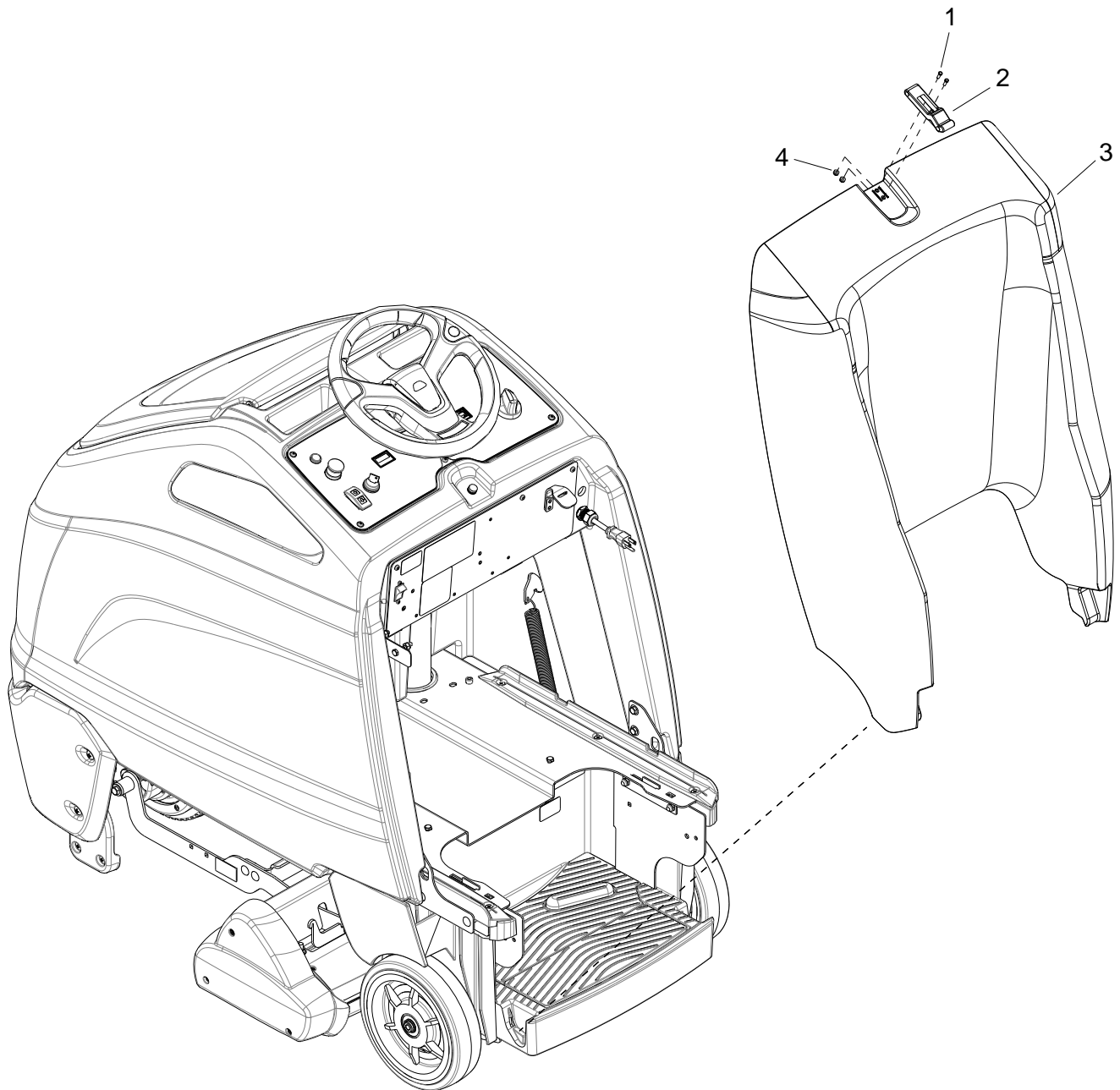
REF	PART NO.	QTY	DESCRIPTION	SERIAL NO. FROM	NOTES
1	86409430	1	STRAP, BAG STORAGE		
2	86408990	1	LID, CV86, TRIMMED		
3	86408930	1	HOSE, VAC, 2.5 X 45.0		
4	86408730	1	GASKET, LOWER VAC SEAL		
5	86408660	1	SHAFT, .25 X 15.3, SS		
6	86408650	1	GASKET, VACUUM ADAPTER		
7	86408580	2	SCREW, 10-32 X 1 TPNHMS SS BLK ZNPLT		
8	86404420	1	BRACKET, HINGE, LID		
9A	86403960	1	MAIN HOUSING, CV86, OBC, TRIMMED		OBC
9B	86416110	1	MAIN HOUSING, CV86, TRIMMED		NON-OBC
10	86403930	1	BATTERY CONNECTOR MOUNT		
11	86403690	1	VACUUM BAG ADAPTER		
12	86371560	1	PLATE, OBC LOCK		OBC ONLY
13	86371410	4	SCREW, 10-32 X .75 TMS SS BLK		
14	86367250	4	WASHER, .344 X 1.13 X .09 SS		
15	86361770	2	WASHER, 1/4 FLT SS		
16	86361760	1	SCREW, 1/4-20 X 1.25 RDHCARR SS		
17	86360700	1	GASKET, .188 X .37 X 53.2		
18	86279170	2	WASHER, 10 FLT		
19	86279130	4	WASHER, 5/16 SPLT STL ZNPLT		
20	86276780	4	SCREW, 5/16-18 X .75 HHCS SS		
21	86276490	4	SCREW, 5/16-18 X .625 HHCS SS		
22	86273740	1	SCREW, 1/4-20 X 1.5 HHCS SS		OBC ONLY
23	86264940	1	CABLE TIE, 11.38" UL/CSA		
24	86233120	2	CLAMP, 2.75" WORM GEAR		
25	86173330	4	WASHER, M5 SS ISO7093		
26	86172980	4	SCREW, KA50 X 10 OVHCS STL WN1412 ZNPLT		
27	86010670	4	WASHER, 5/16 FLT SS		
28	86005810	3	NUT, 1/4-20 HEX NYLOCK SS		QTY 1 OBC ONLY
29	86005620	1	NUT, 1/4-20 WELL		
30	86002830	1	CABLE TIE, .375 X 24.7		
31	86409370	1	GASKET, VACUUM LID		



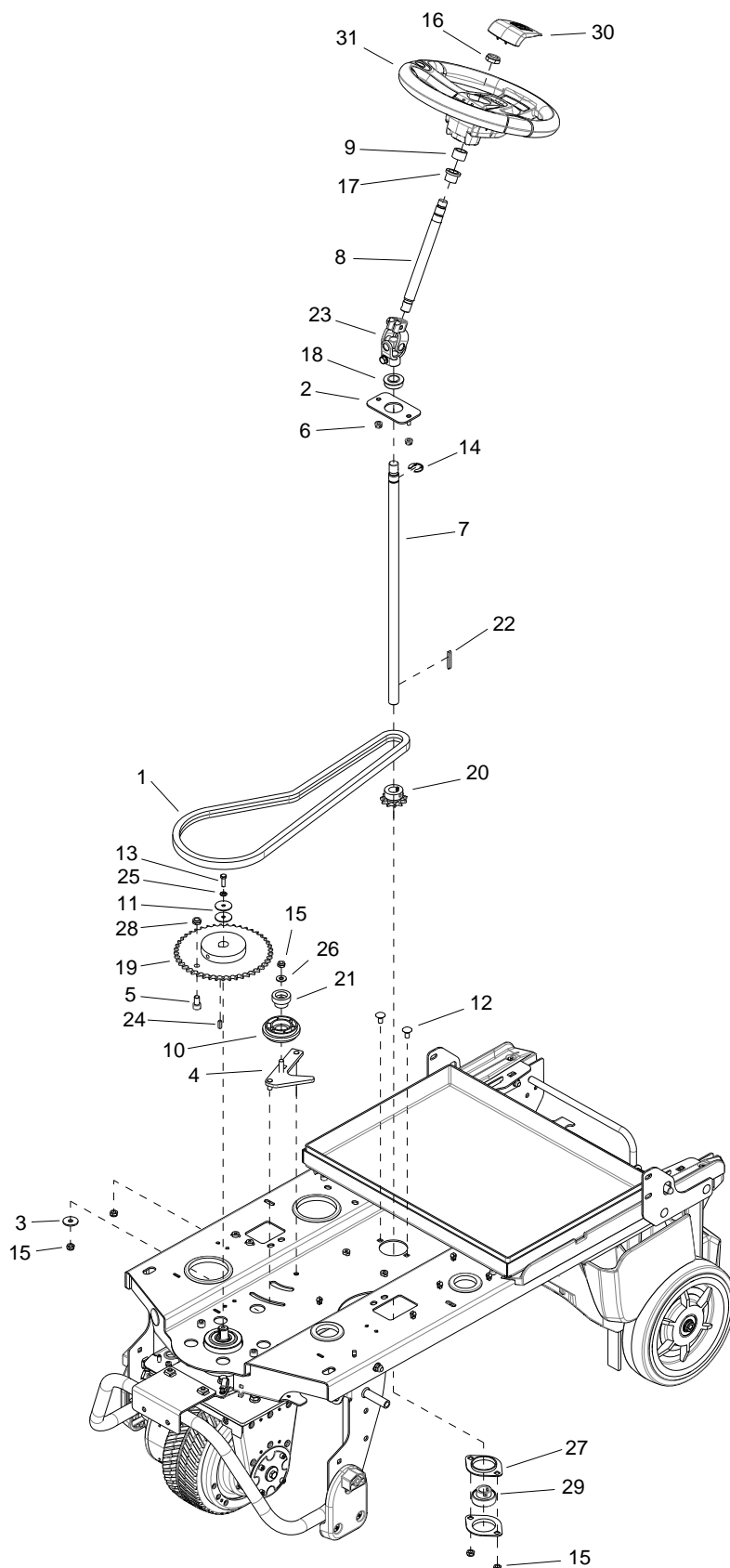
REF	PART NO.	QTY	DESCRIPTION	SERIAL NO. FROM	NOTES
1	86399670	1	PLATFORM, OPERATOR, BLK		
2	86334240	1	PEDAL, HEEL, BLK		
3	86334690	1	PEDAL, ACCELERATOR, YEL		
4	86361170	1	PIN, DOWEL, .25D X 3.125", STEEL		
5	86279170	7	WASHER, #10 X 1.0 FLAT		
6	86172980	10	SCR, KA50X10,PT OHS,WN1412,PLTD		
7	86254970	3	SPRING, COMP 18MMOD X 83 X 2		
8	86327510	4	SCR, KA50 x 16, WN1412 A2 SS		
9	86198440	6	CLAMP, 1/4 PLASTIC CABLE		
10	86264930	3	CABLE TIE, 3.5" UL/CSA		
11	86361060	1	BRKT, POT. ACCEL PEDAL		
12	86311560	1	POTENTIOMETER ASM, LINEAR		
13	86005810	2	NUT 1/4-20 HEX NYLOCK SS		
14	86007010	2	SCREW 1/4-20 X 3 1/4 HHCS PLT		
15	86327910	4	SCR, KA50X25, PT OHS, WN1412, PLTD		
16	86007110	1	SWITCH, 25A SPST 125-250V SNAP		
17	86361160	1	PLATE, SWITCH COVER		
18	86264940	1	CABLE TIE, 11.38" UL/CSA		
19	86408680	1	STATIC STRAP, .25T X 1.12W		
20	86006830	2	SCREW, 10-32 X 1 PHPNHMS STL ZNPLT		
21	86010650	2	WASHER, .203 X .562 X .032 FLT		
22	86270990	2	NUT, 10-32 HEX NYLOCK SS		



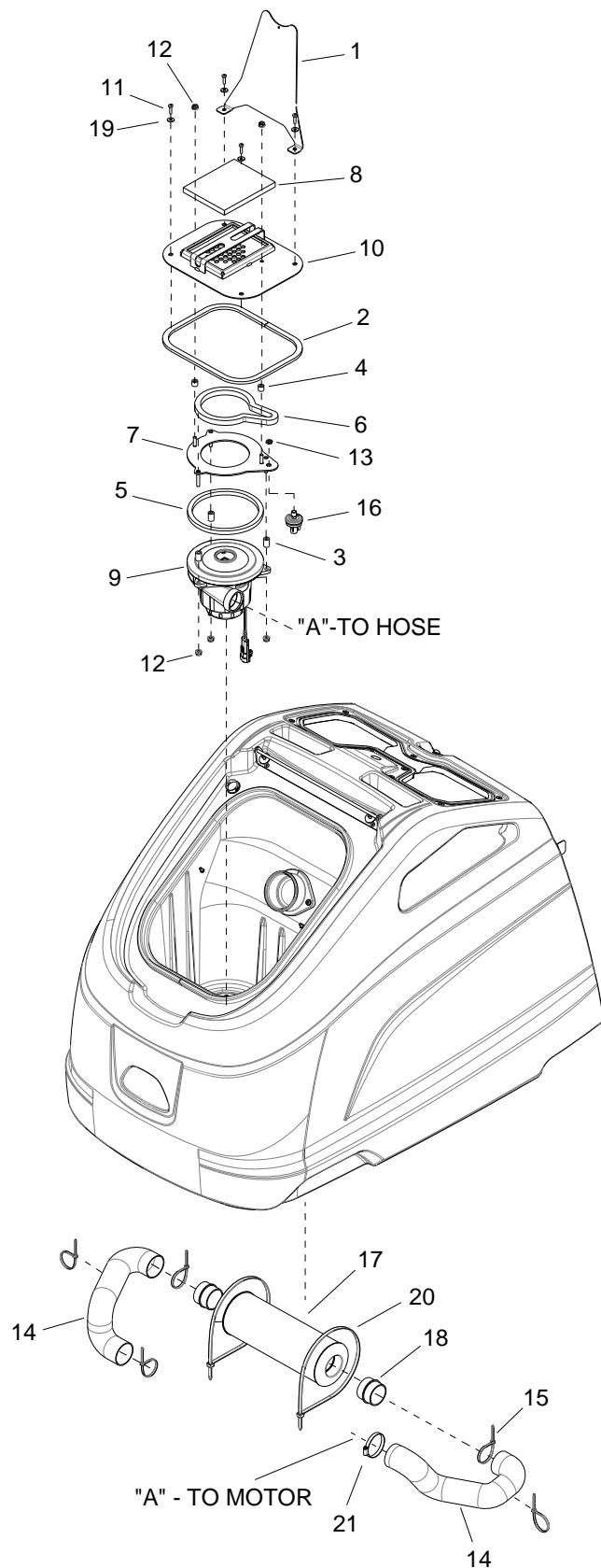
REF	PART NO.	QTY	DESCRIPTION	SERIAL NO. FROM	NOTES
1	86361130	2	PLATE, PLATFORM SUPPORT		
2	86271840	4	NUT 5/16-18 HEX NYLOCK THIN SS		
3	86361140	4	SPACER, 1.50 X .625OD X .065" WALL		
4	86408920	1	PLATFORM, OPERATOR, MACHINED		
5	86361120	1	COLLAR, SHFT 1"ID X 1-5/8"OD X 5/8"		
6	86357990	1	AXLE, REAR		
7	86008710	2	RING 3/4" EXT SNAP H-D		
8A	86322590	2	WHEEL, 10 X 2.5 W/BRNGS, GRY, NT		
8B	86335520	2	WHEEL 10 X 2.5		OPTION
9	86326490	4	SCREW, 5/16-18 X 3.0 CARRIAGE, SS		
10	86361150	2	PLATE, TANK SUPPORT		
11	86224320	4	SPACER, .63 OD X .385ID X .64L		
12	86232130	2	CAP 2.75 ID X 1.0 L BLK VINYL		OPTION



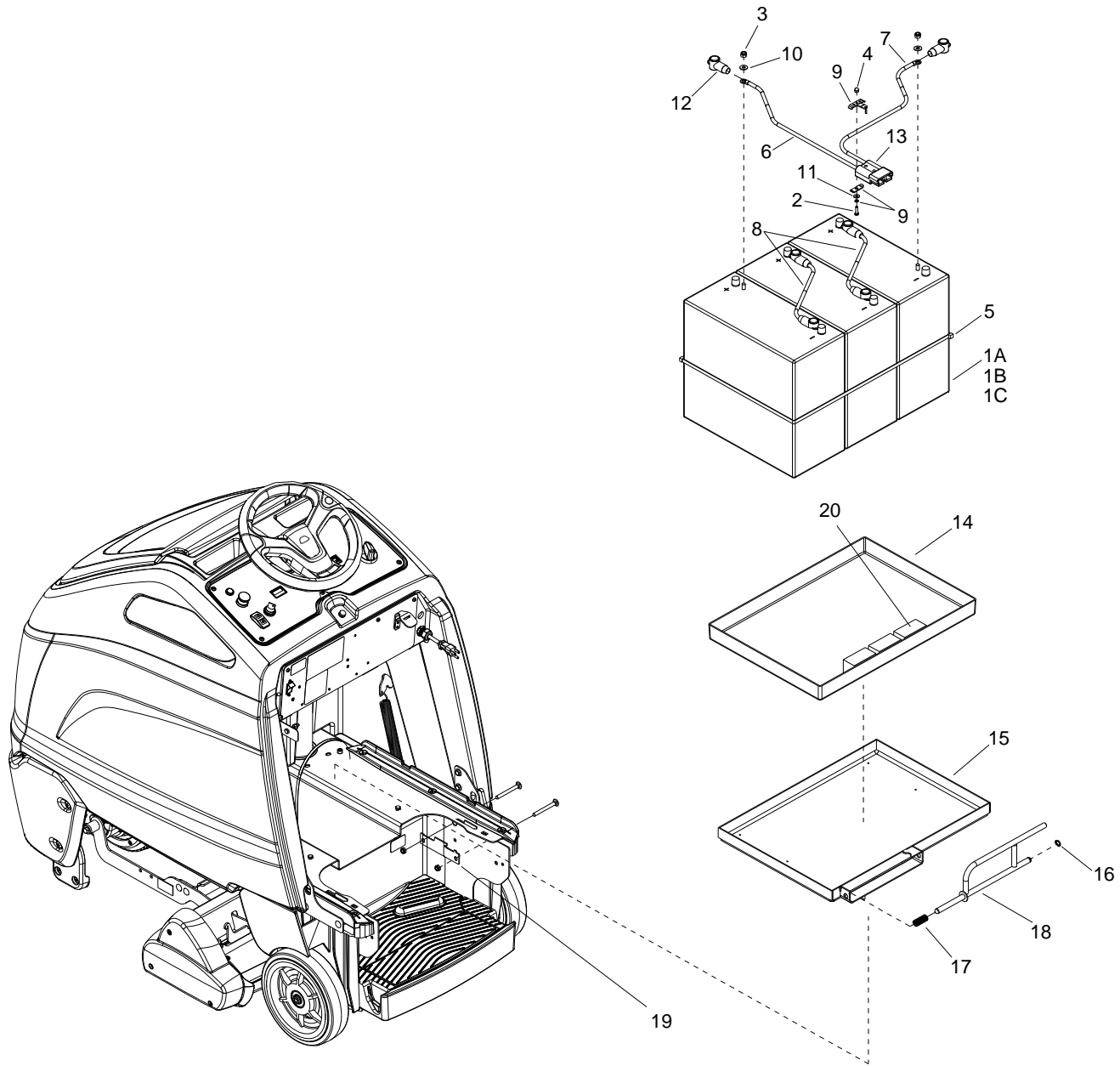
REF	PART NO.	QTY	DESCRIPTION	SERIAL NO. FROM	NOTES
1	86277620	2	SCR, 8-32 X 1/2 HHCS SS		
2	86161800	1	LATCH & CONCEALED KEEPER		
3	86399960	1	PANEL, REAR COVER, BLK		
4	86272020	2	NUT, 8-32 HEX THIN NYLOCK SS		



REF	PART NO.	QTY	DESCRIPTION	SERIAL NO. FROM	NOTES
1	86408630	1	CHAIN, 12.7MM PITCH, 102 ROLLER		
2	86403920	1	BRKT, STEERING		
3	86367250	1	WASHER, .344 X 1.13 X .09 SS		
4	86361370	1	ASM, TENSIONER PLATE		
5	86361210	1	SCREW, 3/8-16 X .625 SCHCS STL BLKOX		
6	86360310	2	NUT, 1/4-20 FLG NYLOCK SS		
7	86358400	1	SHAFT, LOWER STEERING 2.1"		
8	86358390	1	SHAFT, UPPER STEERING 9.1"		
9	86333950	1	BUSHING, .752 X 1 X .625 FLG		
10	86330720	1	CHAIN TENSIONNER		
11	86278940	2	WASHER, 1/4 STL ZNPLT		
12	86277410	2	SCREW, 5/16-18 X .625 CARR SS		
13	86274330	1	SCREW, M6 X 20 HHMS ZNPLT		
14	86272900	1	RING, 3/4" KLIP		
15	86271840	5	NUT, 5/16-18 HEXTHIN NYLOCK SS		
16	86271610	1	NUT, 5/8-18 HEXTHIN NYLOCK STL GR2 ZNPLT		
17	86228790	1	BUSHING, .753 X .875 X .75 FLG		
18	86228670	1	BEARING, 3/4 FLG		
19	86224810	1	SPROCKET, DRIVE WHEEL STEERING		
20	86224800	1	SPROCKET, STEERING SHAFT		
21	86224270	1	SLEEVE, CHAIN TENSIONER		
22	86219650	1	KEY, 5MM SQ X 39MM L		
23	86219600	1	JOINT BUSH		
24	86135970	1	KEY, 3/16 X 3/16 X .625 LCSTL		
25	86010780	1	WASHER, 1/4 SPL STL ZNPLT		
26	86010670	1	WASHER, 5/16 FLT SS		
27	86008610	2	FLANGED BEARING PRESS STEEL		
28	86005630	1	NUT, 3/8-16 HEXTHIN NYLOCK SS		
29	86001030	1	BEARING, 3/4 SPH BALL		
30	66403530	1	CAP, STEERING WHEEL KARCHER		
31	64357990	1	STEERING WHEEL		



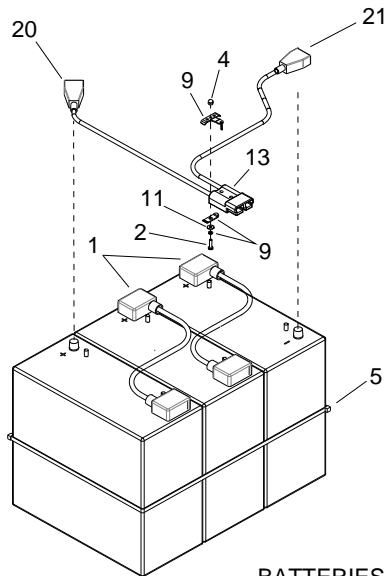
REF	PART NO.	QTY	DESCRIPTION	SERIAL NO. FROM	NOTES
1	86414350	1	BRKT, BAG SUPPORT		
2	86409360	1	GASKET, .25 X .50 X 35.0		
3	86408980	3	SPACER, .255 X .750 X .500, NYL		
4	86408970	2	SPACER, .255 X .437 X .500, NYL		
5	86408750	1	GASKET, 5.80 X 6.60 X .38		
6	86408740	1	GASKET, VACUUM CHAMBER		
7	86408720	1	PLATE, VACUUM MOUNT		
8	86408710	1	FILTER, VACUUM INTAKE		
9	86408700	1	VAC MOTOR ASM, 36VDC 1-STAGE		
10	86408690	1	MOUNT, VACUUM MOTOR		
11	86408580	4	SCREW, 10-32 X 1 TPNHMS SS BLK ZNPLT		
12	86360310	5	NUT, 1/4-20 FLG NYLOCK SS		
13	86346530	1	NUT, 1/8-27 THIN BRS		
14	86281030	2	HOSE, 2.0 VAC EXHAUST X 19"		
15	86264940	5	CABLE TIE 11.38" UL/CSA		
16	86257160	1	SWITCH VACUUM 15" H2O NC/NO		
17	86247660	1	MUFFLER, SOUND		
18	86236190	2	FITTING, MUFFLER ADAPTER		
19	86173330	4	WASHER, M5 SS ISO7093		
20	86002830	2	CABLE TIE, .375 X 24.7		
21	86002380	1	CLAMP, 2.25" WORM GEAR		



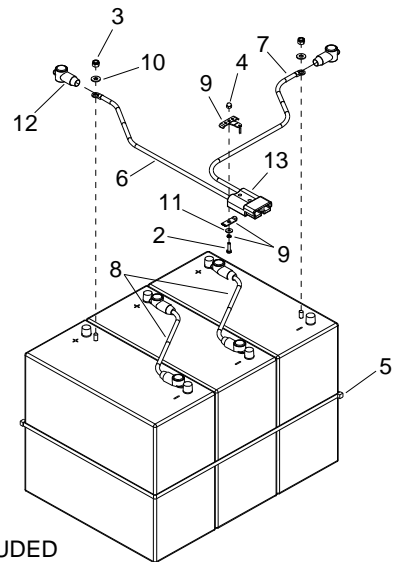
Wiring - Batteries 1 - (1.012-596.0, 1.012-597.0)

REF	PART NO.	QTY	DESCRIPTION	SERIAL NO. FROM	NOTES
1A	86283410	3	BATTERY, 12V, 225AH		
1B	86228430	3	BATTERY, 12V AGM 234AH		
1C	86228410	3	BATTERY, 12V, 205AH (J185P-AC)		
2	86273980	1	SCR, 10-32 X 3/4 PPHMS SS		
3	86271910	6	NUT, 5/16-18 FLEXLOCK		
4	86270890	1	NUT, 10-32 HEX ACORN		
5	86264960	2	CABLE TIE, .375 X 43		
6	86260610	1	WIRE, 4X25RD CTERM X 3/8RG		
7	86260230	1	WIRE, 4X30BLK CTERM X 3/8RG		
8	86260200	2	WIRE, 4X14.5BLK 3/8RG X 3/8RG		
9	86233360	1	CLAMP, CABLE KIT SY945		
10	86010670	6	WASHER, 5/16 X 3/4 SS		
11	86010650	1	WASHER, #10 X 9/16 FLAT		
12	86008920	6	INSULATOR-TERMINAL RUBBER BOOT- BLACK		
13	86008760	1	CONNECTOR 175 DCA GRY W/O TERMS		
14	86398140	1	TRAY, BATTERY CS26		
15	86359500	1	ASM, BATTERY TRAY		
16	86272810	1	RING 1/2 EXT.SNAP H-D		
17	86254990	1	SPRING,COMP, 63ODX3.5LX.047W		
18	86092910	1	LATCH ROD, BATTERY TRAY		
19	86360020	2	PLATE, BATTERY STOP		
20	86229700	3	BLOCK, 3.0 X 1.5 X 1.5		1B ONLY

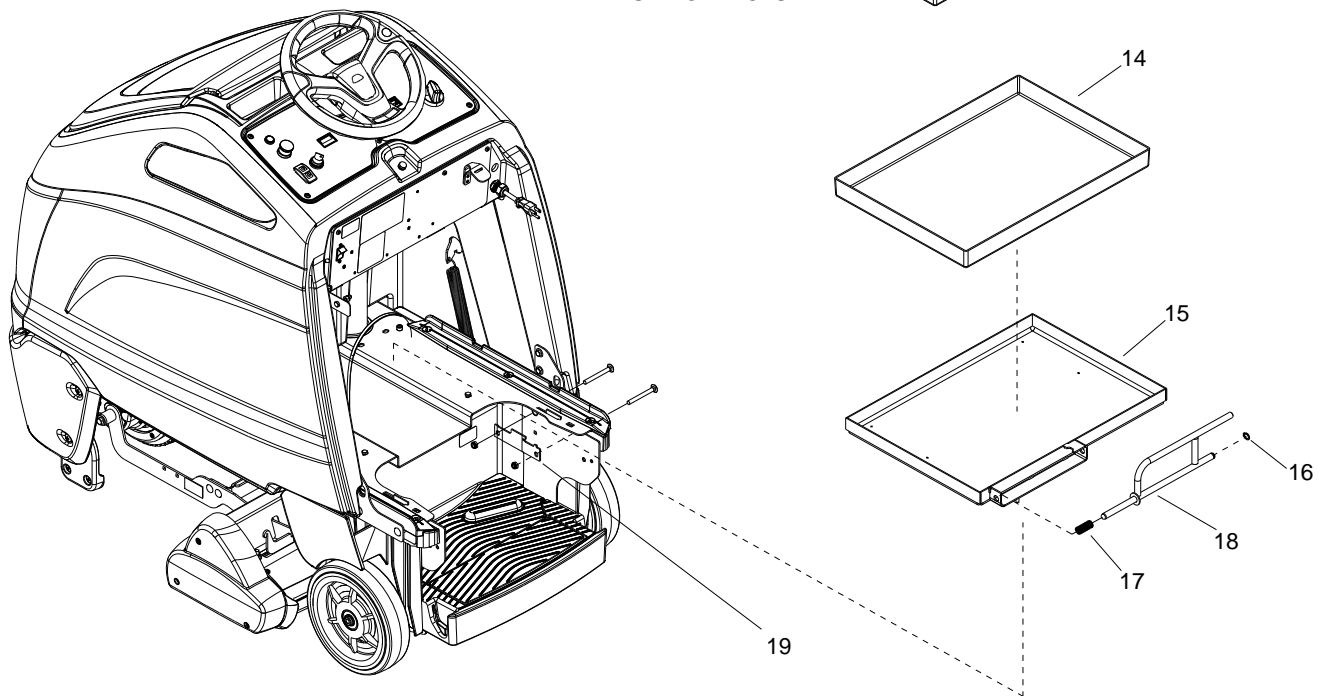
AUTOMOTIVE TOP POST CONNECTION



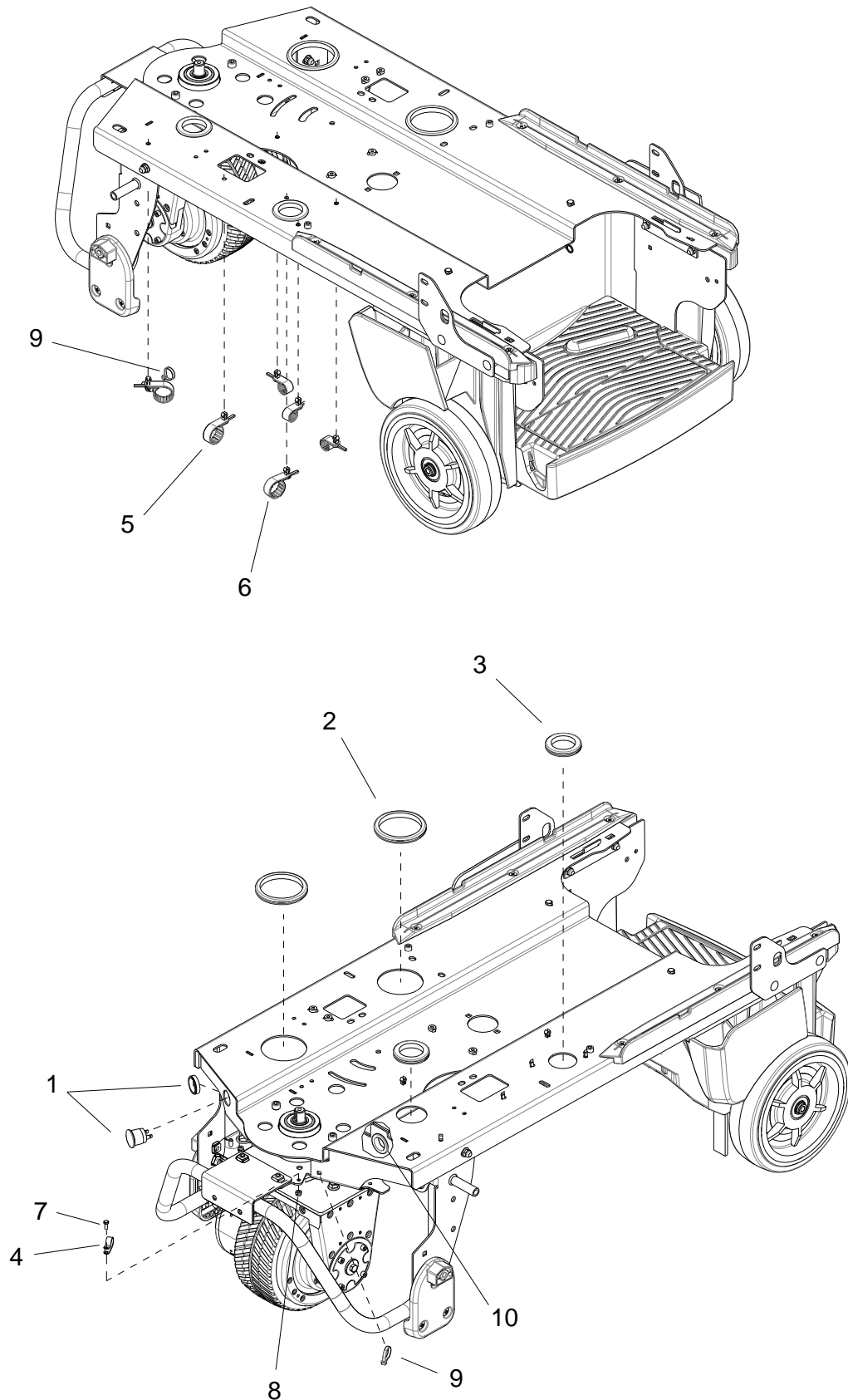
STUD TERMINAL CONNECTION



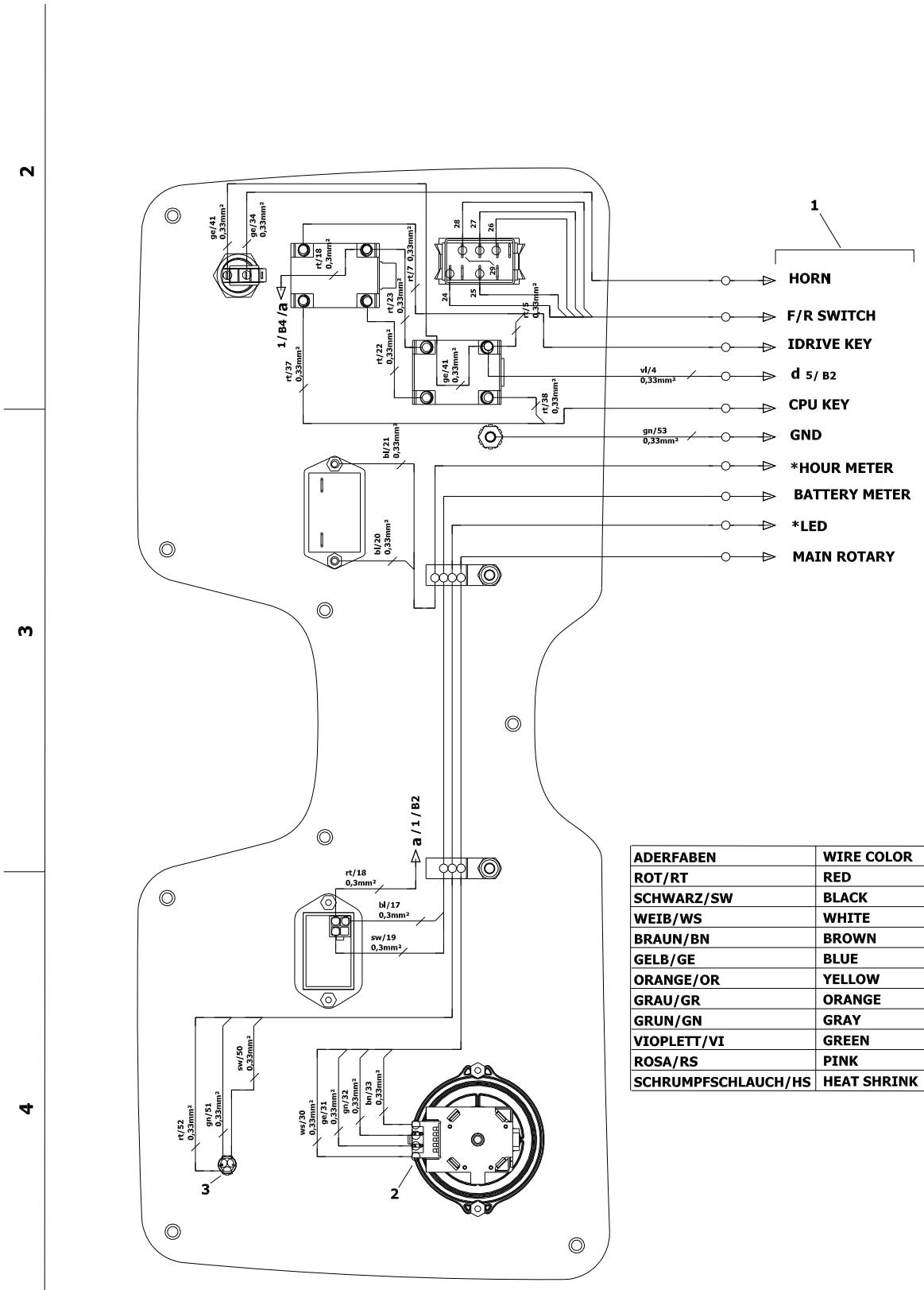
BATTERIES - NOT INCLUDED



REF	PART NO.	QTY	DESCRIPTION	SERIAL NO. FROM	NOTES
1	86002510	2	CABLE ASM, BAT. JUMPER X 15"		
2	86273980	1	SCR, 10-32 X 3/4 PPHMS SS		
3	86271910	6	NUT, 5/16-18 FLEXLOCK		
4	86270890	1	NUT, 10-32 HEX ACORN		
5	86264960	2	CABLE TIE, .375 X 43		
6	86260610	1	WIRE, 4X25RD CTERM X 3/8RG		
7	86260230	1	WIRE, 4X30BLK CTERM X 3/8RG		
8	86260200	2	WIRE, 4X14.5BLK 3/8RG X 3/8RG		
9	86233360	1	CLAMP, CABLE KIT SY945		
10	86010670	6	WASHER, 5/16 X 3/4 SS		
11	86010650	1	WASHER, #10 X 9/16 FLAT		
12	86008920	6	INSULATOR-TERMINAL RUBBER BOOT- BLACK		
13	86008760	1	CONNECTOR 175 DCA GRY W/O TERMS		
14	86398140	1	TRAY, BATTERY CS26		
15	86359500	1	ASM, BATTERY TRAY		
16	86272810	1	RING 1/2 EXT.SNAP H-D		
17	86254990	1	SPRING,COMP, 63ODX3.5LX.047W		
18	86092910	1	LATCH ROD, BATTERY TRAY		
19	86360020	2	PLATE, BATTERY STOP		
20	86002570	1	WIRE, 4X27 RD BCLAMP X CTERM		
21	86002580	1	WIRE, 4X27 BK BCLAMP X CTERM		

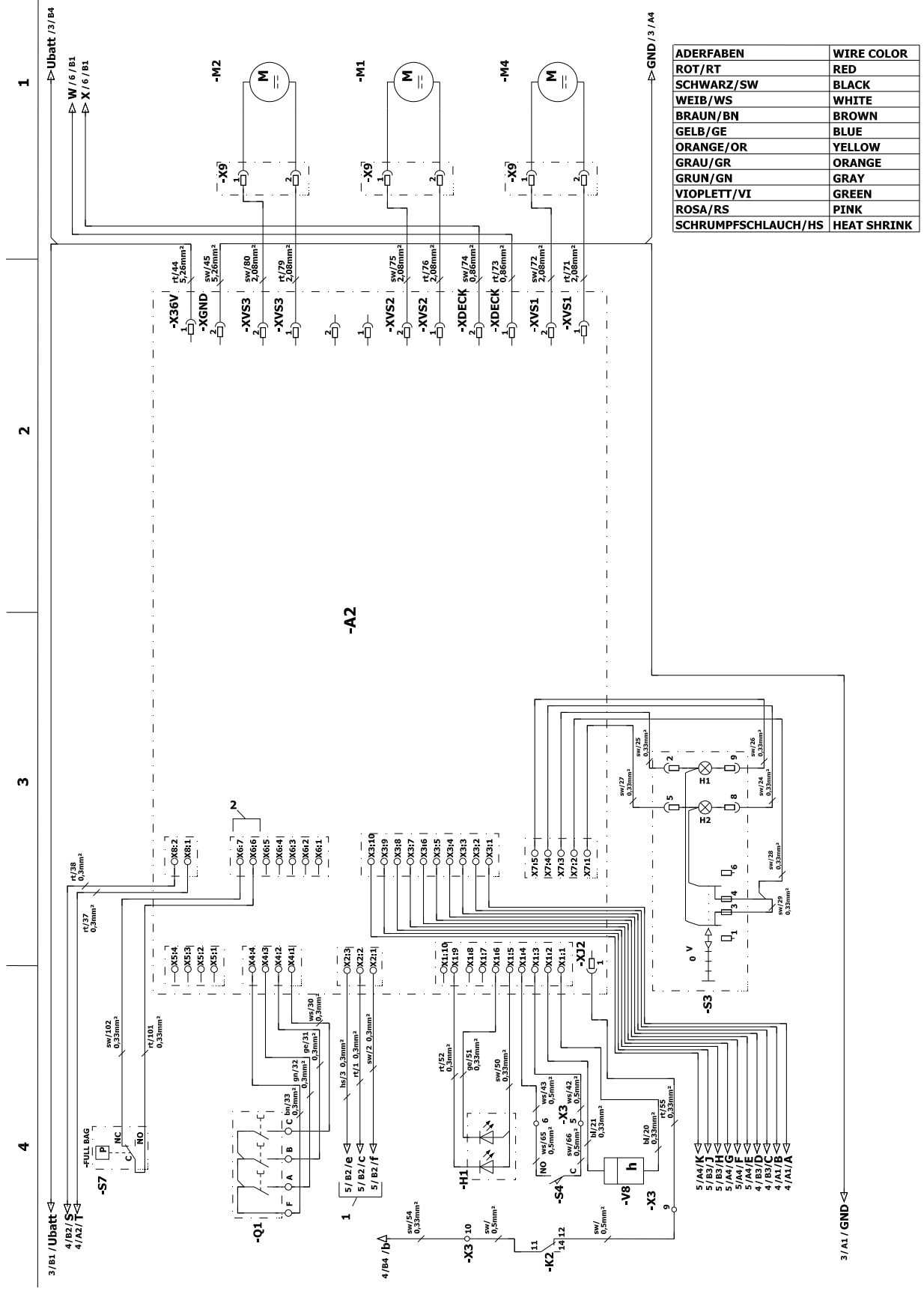


REF	PART NO.	QTY	DESCRIPTION	SERIAL NO. FROM	NOTES
1	86239720	1	HORN, 108DB MINATURE W/RING		
2	86238450	2	GROMMET, 3.0 ID X 3.25 GROOVE		
3	86238500	2	GROMMET,1.703IDX2.5.ODX.125GRV		
4	86198460	1	CLAMP, 5/8 NYLON UL/CSA		
5	86361220	3	CLAMP, PAN 1-1/4"		
6	86361230	3	CLAMP, PAN 3/4"		
7	86006980	1	SCREW, 10-32 X .5 HHCS SS		
8	86270990	1	NUT, 10-32 HEX NYLOCK SS		
9	86264940	2	CABLE TIE 11.38" UL/CSA		
10	86238430	1	GROMMET 1.00 ID 3/16 GRIP		



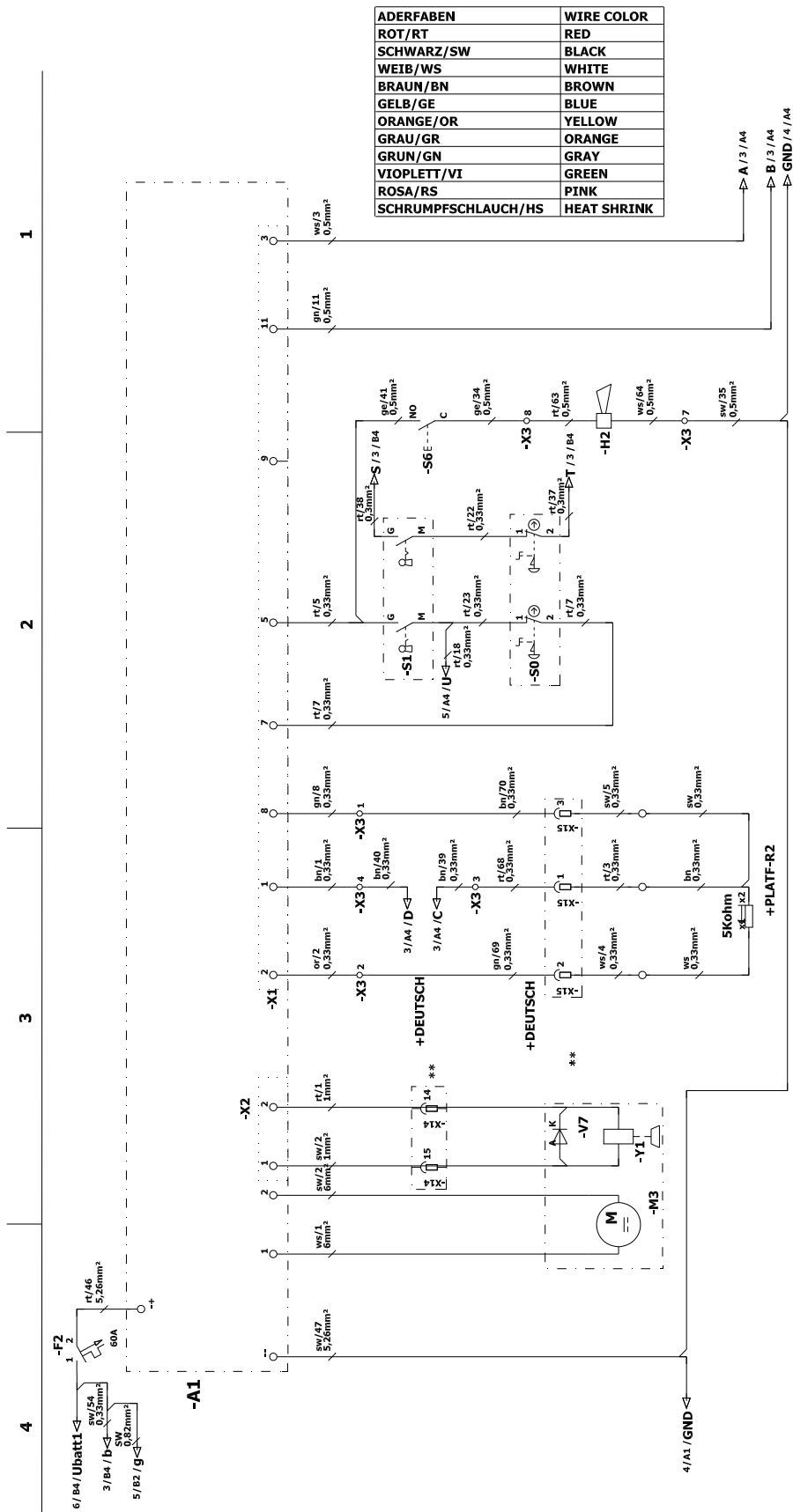
REF	PART NO.	QTY	DESCRIPTION	SERIAL NO. FROM	NOTES
1	86409770	1	HARNESS, PANEL, CV86		
2	86366540	1	HARNESS, ROTARY, MAIN, CS26		
3	86348640	1	LED, BAG FULL INDICATOR		
-	86409780	1	HARNESS, MAIN, CV86		NOT SHOWN
-	86008760	1	CONNECTOR 175 DCA GRY W/O TERMS		NOT SHOWN

REF	PART NO.	QTY	DESCRIPTION	SERIAL NO. FROM	NOTES
1	86411240	1	HARNESS, GND STRAP, CV86		
2	86411220	1	HARNESS, SIDE BROOM, CV34		
3	86411210	1	HARNESS, DECK ACT, CV34		
4	86411200	1	HARNESS, VACUUM, CV86		
5	86411190	1	HARNESS, BRUSH MTR, CV34		
6	86369820	1	HARNESS, DRIVE AND BRAKE ASM		
7	86361910	1	HARNESS, PLATFORM PNL, CS26		
8	86010860	1	WIRE, 4X20 BK CTERM X5/16RING		
9	86010850	1	WIRE, 4X20RD CTERM X 5/16RING		
10	86366620	1	HARNESS, HORN, CS26		
-	86366520	1	HARNESS, PLATFORM CS26		NOT SHOWN

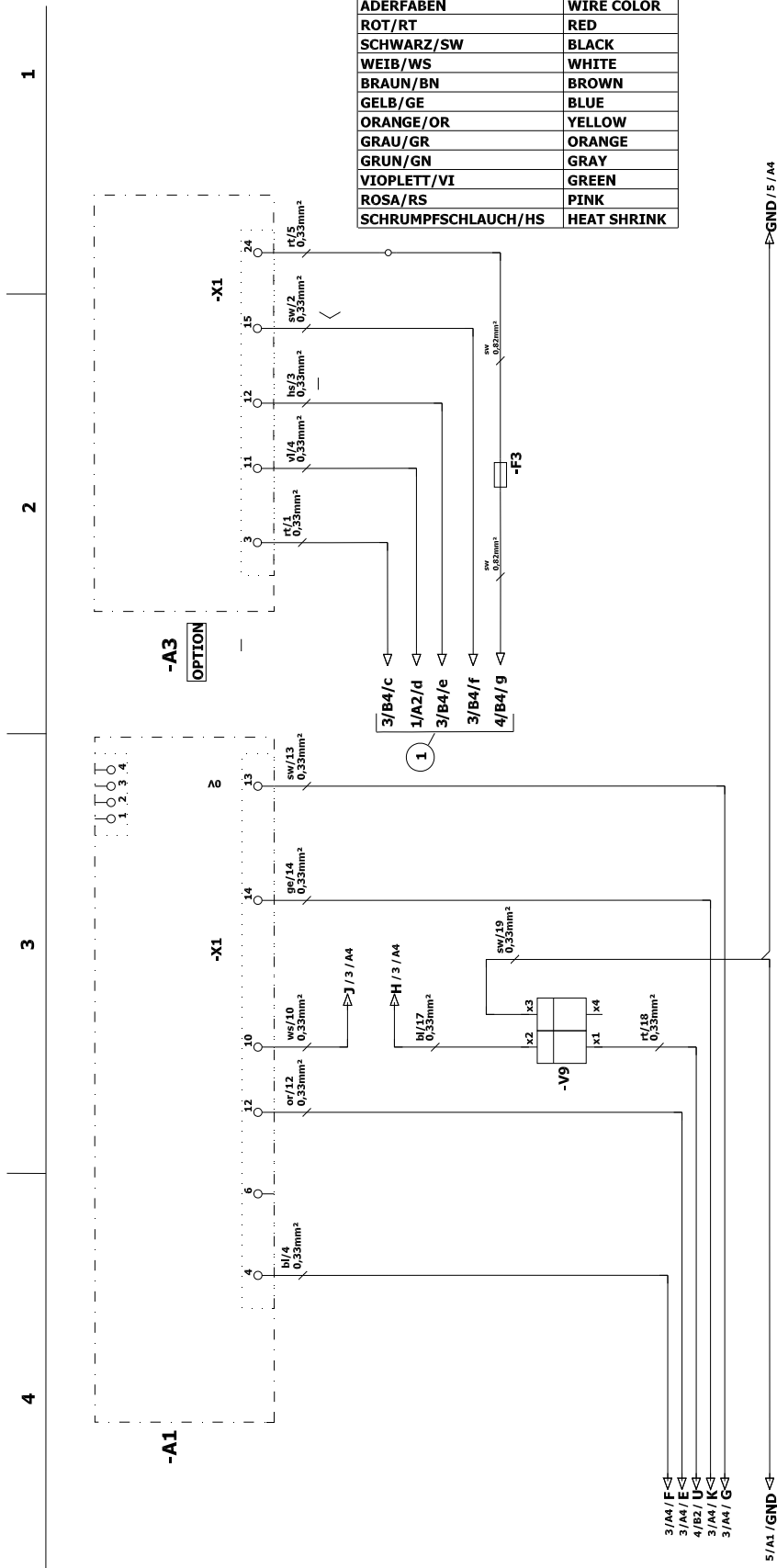


ADERFABEN	WIRE COLOR
ROT/RT	RED
SCHWARZ/SW	BLACK
WEISS/WS	WHITE
BRAUN/BN	BROWN
GELB/GE	BLUE
ORANGE/OR	YELLOW
GRAU/GR	ORANGE
GRÜN/GN	GRAY
VIOPLETT/VI	GREEN
ROSA/RS	PINK
SCHRUMPFSCHLAUCH/HS	HEAT SHRINK

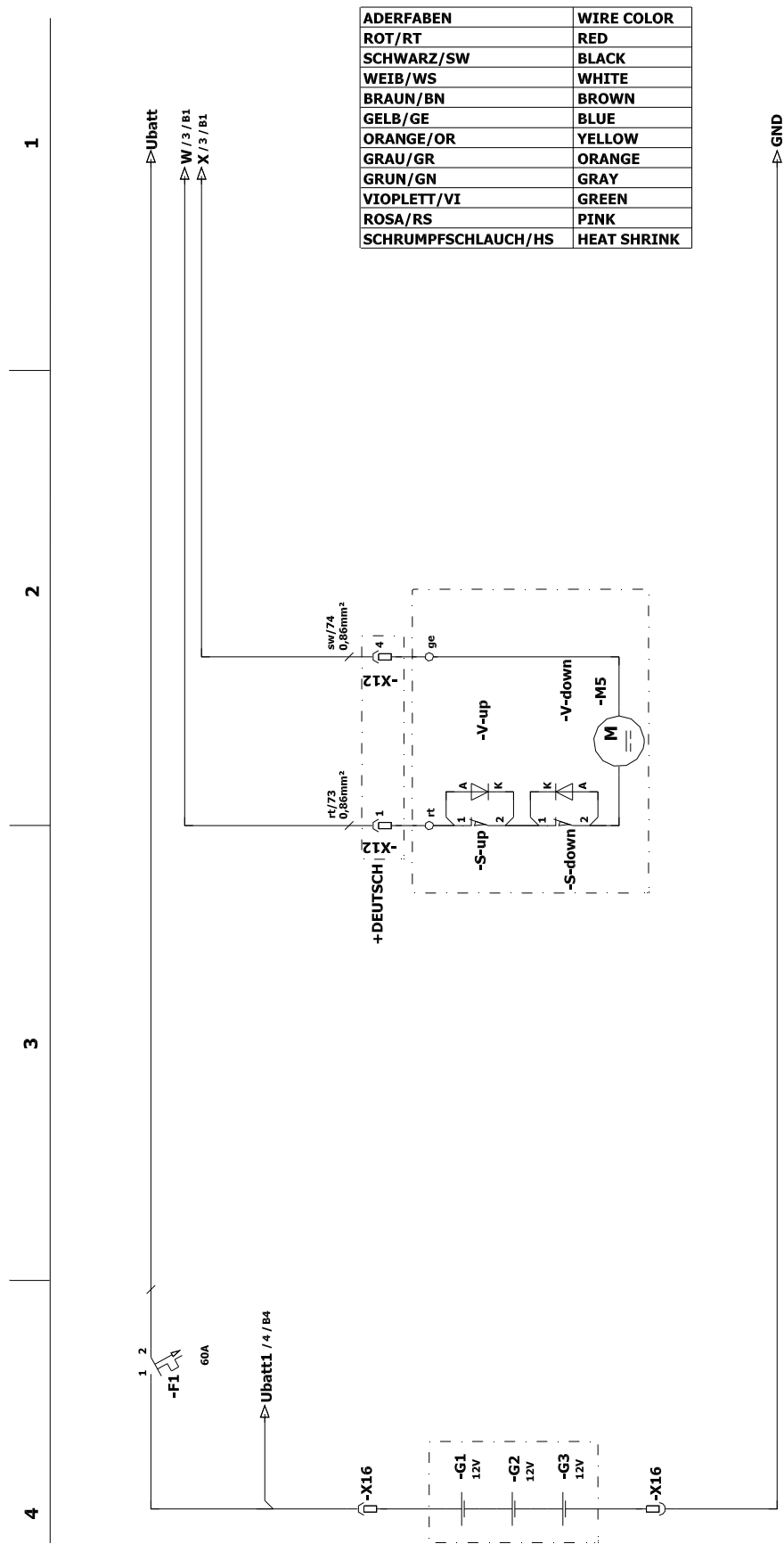
REF	PART NO.	QTY	DESCRIPTION	SERIAL NO. FROM	NOTES
1	86413590	1	HARNESS, TCU		
2	86411230	1	HARNESS, VAC SWITCH, CV34		



REF	DESCRIPTION
A1	IDRIVE CONTROL
A2	CPU CONTROL
A3	TCU (NOT INCLUDED WITH 1.012-600.0)
G1-G3	BATTERY 12V
M1	BROOM MOTOR
M2	BRUSH MOTOR
M3	TRACTION MOTOR
M4	VACUUM MOTOR
M5	DECK ACTUATOR
S0	E STOP
S1	KEY SWITCH
S3	F/R SWITCH
S4	PLATFORM SWITCH
S6	HORN SWITCH
S7	VACUUM SWITCH
Q1	MAIN ROTARY
Y1	BRAKE
V8	HOUR METER
V9	BATTERY METER
H1	BAG FULL LED
H2	HORN
F1	PCB 60A - U2
F2	IDRIVE 60A - U2
F3	TCU 0.5A
X12/X13/X14/X15	DEUTSCH CONNECTOR
X9/X10/X11	PACKARD CONNECTOR
X16	ANDERSON



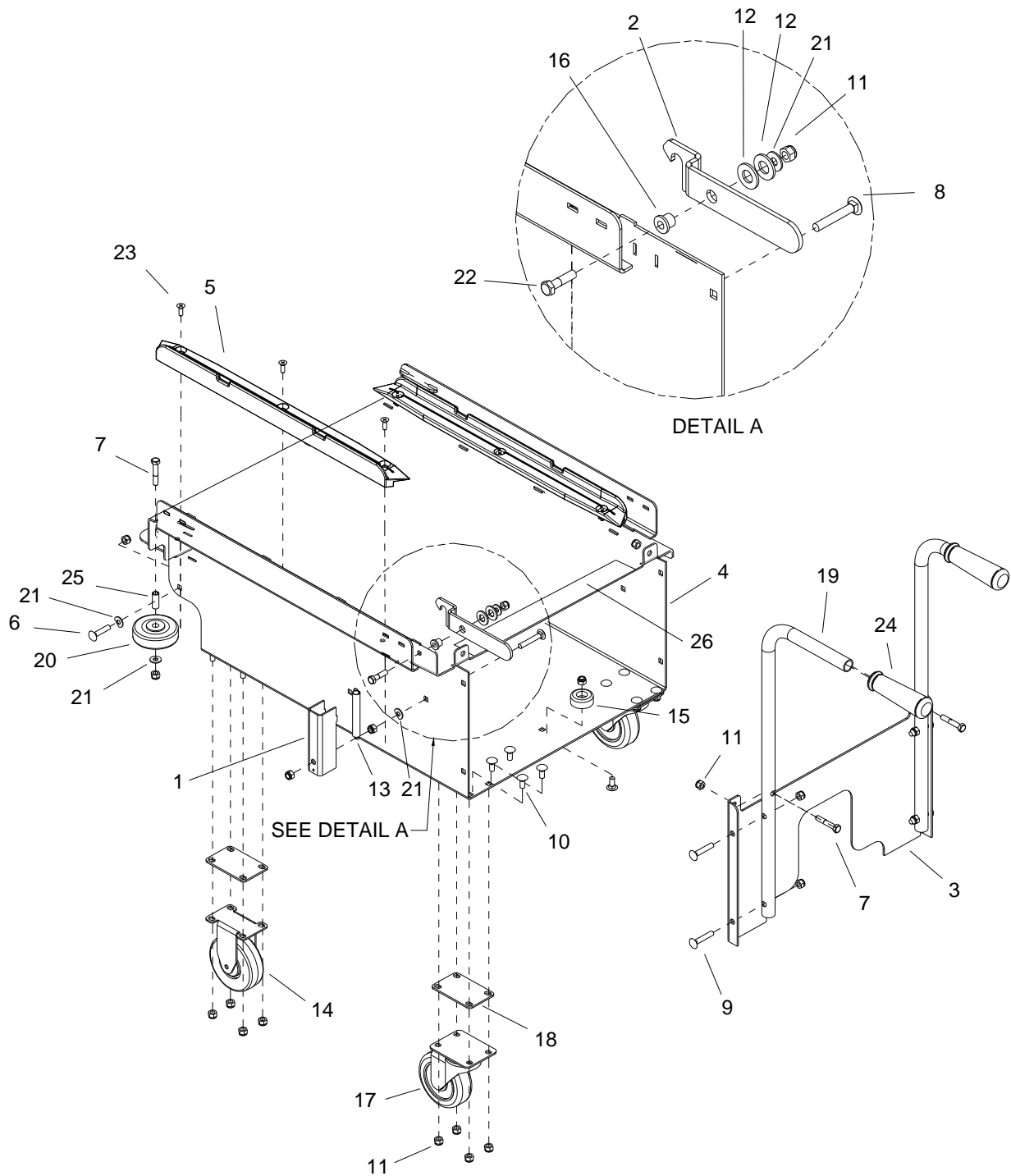
REF	DESCRIPTION
A1	IDRIVE CONTROL
A2	CPU CONTROL
A3	TCU (NOT INCLUDED WITH 1.012-600.0)
G1-G3	BATTERY 12V
M1	BROOM MOTOR
M2	BRUSH MOTOR
M3	TRACTION MOTOR
M4	VACUUM MOTOR
M5	DECK ACTUATOR
S0	E STOP
S1	KEY SWITCH
S3	F/R SWITCH
S4	PLATFORM SWITCH
S6	HORN SWITCH
S7	VACUUM SWITCH
Q1	MAIN ROTARY
Y1	BRAKE
V8	HOUR METER
V9	BATTERY METER
H1	BAG FULL LED
H2	HORN
F1	PCB 60A - U2
F2	IDRIVE 60A - U2
F3	TCU 0.5A
X12/X13/X14/X15	DEUTSCH CONNECTOR
X9/X10/X11	PACKARD CONNECTOR
X16	ANDERSON



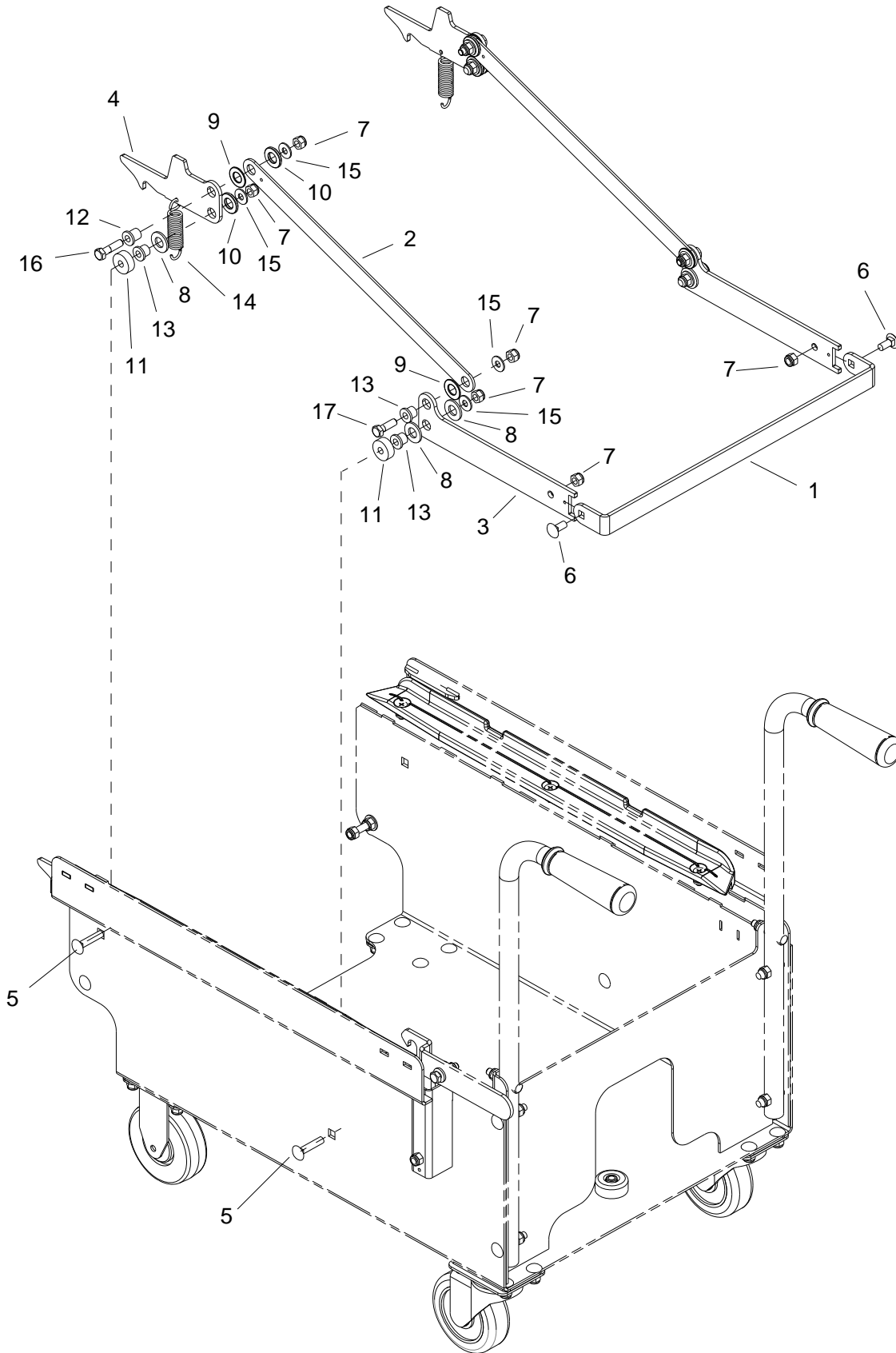
REF	DESCRIPTION
A1	IDRIVE CONTROL
A2	CPU CONTROL
A3	TCU (NOT INCLUDED WITH 1.012-600.0)
G1-G3	BATTERY 12V
M1	BROOM MOTOR
M2	BRUSH MOTOR
M3	TRACTION MOTOR
M4	VACUUM MOTOR
M5	DECK ACTUATOR
S0	E STOP
S1	KEY SWITCH
S3	F/R SWITCH
S4	PLATFORM SWITCH
S6	HORN SWITCH
S7	VACUUM SWITCH
Q1	MAIN ROTARY
Y1	BRAKE
V8	HOUR METER
V9	BATTERY METER
H1	BAG FULL LED
H2	HORN
F1	PCB 60A - U2
F2	IDRIVE 60A - U2
F3	TCU 0.5A
X12/X13/X14/X15	DEUTSCH CONNECTOR
X9/X10/X11	PACKARD CONNECTOR
X16	ANDERSON

Notes:

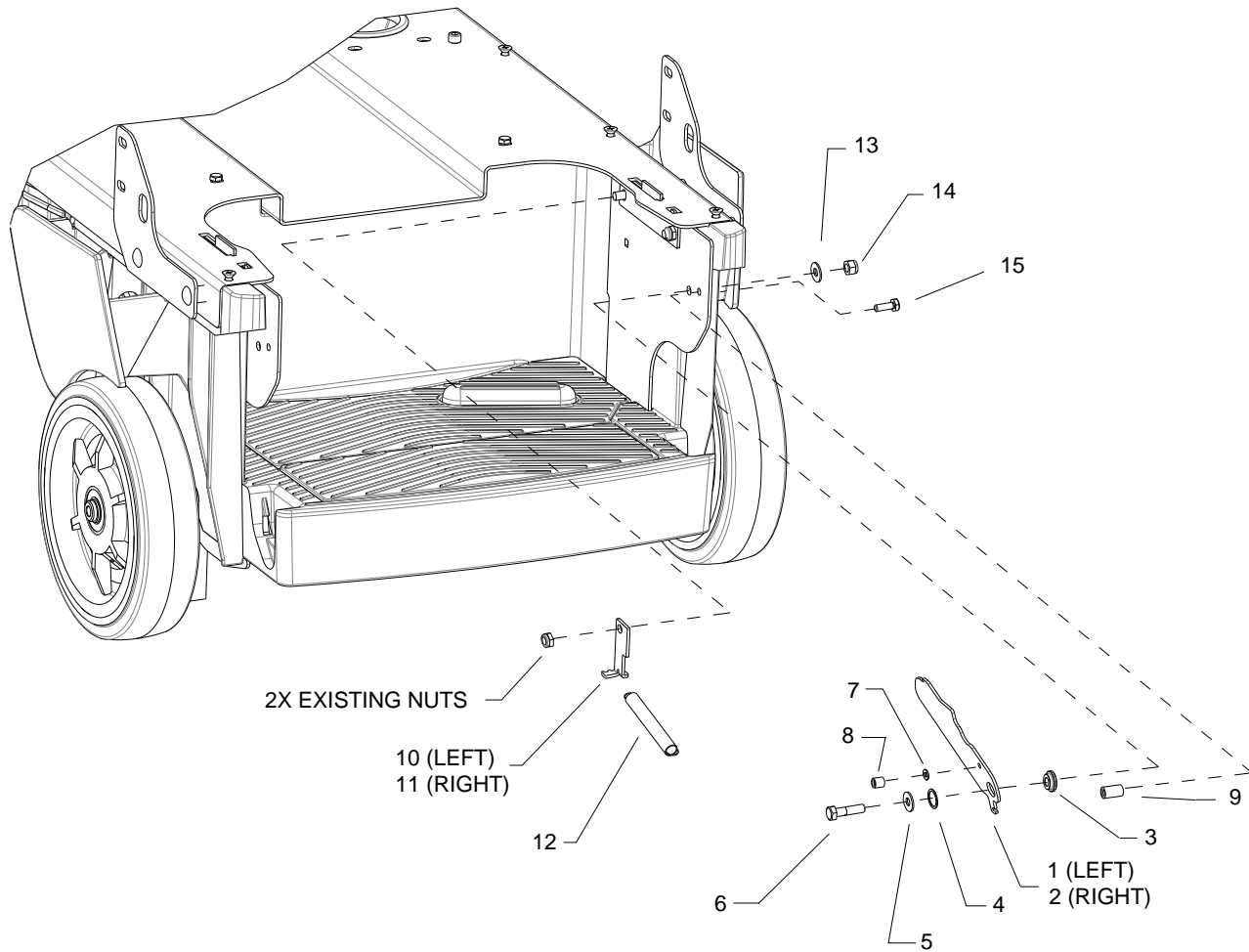
OPTIONS



REF	PART NO.	QTY	DESCRIPTIONB	SERIAL NO. FROM	NOTES
1	86359450	1	BRACKET, SPRING COVER, CART		
2	86359400	1	BRKT, TRAY CATCH		
3	86359390	1	BRACKET, BACK, CART		
4	86359380	1	ASM, FRAME, BATTERY CART		
5	86358190	2	GLIDE, BATTERY TRAY		
6	86277470	2	SCR, 5/16-18 X 1.5 CARRIAGE SS		
7	86276790	4	SCR, 5/16-18 X 1.75 HHCS SS		
8	86276710	1	SCR, 5/16-18 X 2.0 CARRIAGE		
9	86276690	4	SCR, 5/16-18 X 1.75 CARR SS		
10	86276070	17	SCR, 5/16-18 X 3/4 CARRIAGE SS		
11	86270830	32	NUT, 5/16-18 HEX NYLOCK SS		
12	86259420	2	WASHER, THRUST.51 ID X 1 ODBRO		
13	86254890	1	SPRING, EXT, .50D X 4.0L		
14	86232590	2	CASTER, PT20		
15	86231090	1	BUMPER, RUBBER 5/16" ID X 1.50		
16	86228840	1	BEARING, FLANGED .313ID X .502OD		
17	86199430	2	CASTER, SWIVEL 4" 250# CPCTY		
18	86078890	4	PLATE, CASTER SPACER		
19	86076600	2	HANDLE, BATTERY CART		
20	86011020	2	WHEEL, 3" DIA. CUSHION RUBBER		
21	86010670	6	WASHER, 5/16 X 3/4 SS		
22	86007020	1	SCR, 5/16-18 X 1.25 HHCS SS		
23	86400810	6	SCREW, 1/4-20 X .75 PHFLHMS SS		
24	86004070	2	GRIP, POLISHER HANDLE		
25	86001350	2	BUSHING, SPANNER .435 X 1.10		
26	86244280	1	LABEL, BATTERY CART OPERATION		

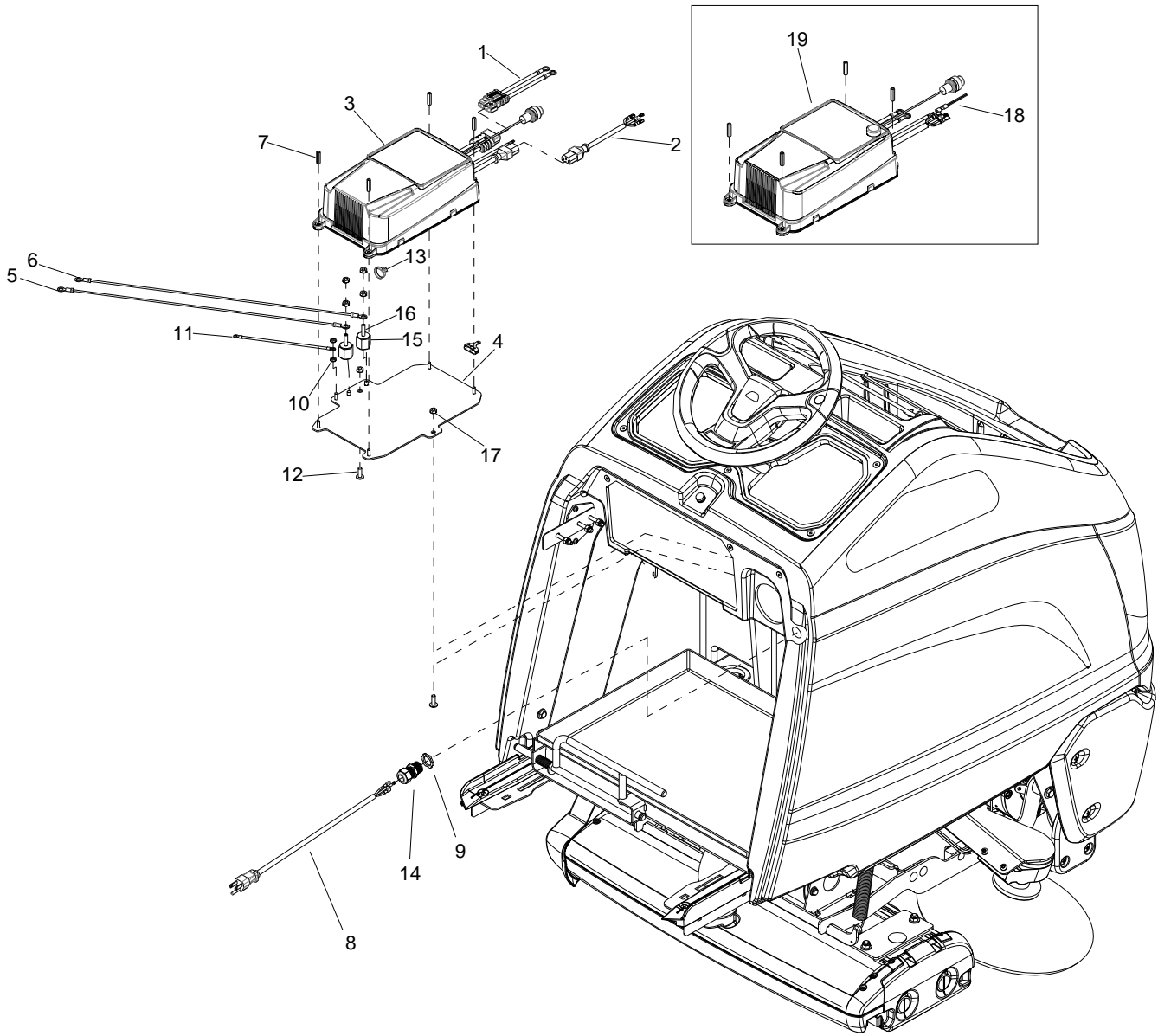


REF	PART NO.	QTY	DESCRIPTION	SERIAL NO. FROM	NOTES
1	86359440	1	BRACKET, PEDAL, CART		
2	86359430	2	PLATE, LATCH LINK, CART		
3	86359420	2	PLATE, PEDAL LINK, CART		
4	86359410	2	PLATE, LATCH, CART		
5	86277470	4	SCR, 5/16-18 X 1.5 CARRIAGE SS		
6	86276070	2	SCR, 5/16-18 X 3/4 CARRIAGE SS		
7	86270830	10	NUT, 5/16-18 HEX NYLOCK SS		
8	86259420	6	WASHER, THRUST.51 ID X 1 ODBRO		
9	86259410	4	WASHER, THRUST .51 ID X1ODX.063		
10	86259400	4	WASHER, THRUST .51 ID X 1 ODBRO		
11	86254280	4	SPACER,1.00 OD X .32 ID X .375		
12	86231150	2	BEARING FLANGED .314IDX.502OD		
13	86228840	6	BEARING, FLANGED .313IDX.502OD		
14	86226830	2	SPRING, EXT. 1.00 OD X 4.0 L		
15	86010670	8	WASHER, 5/16 X 3/4 SS		
16	86007020	2	SCR, 5/16-18 X 1.25 HHCS SS		
17	86006560	2	SCR, 5/16-18 X 1.00 HHCS SS		



REF	PART NO.	QTY	DESCRIPTION	SERIAL NO. FROM	NOTES
1	86360040	1	BATTERY STOP, LEFT		
2	86360050	1	BATTERY STOP, RIGHT		
3	86319670	2	SLEEVE, BEARING		
4	86363760	2	PLATE, SHIM .030" THIC		
5	86010670	2	WASHER 5/16 FLAT SS		
6	86007020	2	SCREW, 5/16-18 X 1.25 HHCS SS NP		
7	86279190	2	WASHER, 10 FLT TYPEB FLT ZNPLT		
8	86360090	2	STANDOFF, RND, 3/8 OD, 10-32 X3/8		
9	86298200	2	STANDOFF, .43 OD, 1/4-20 X.75 L		
10	86360060	1	BRKT, SPING MOUNT, LT		
11	86360070	1	BRKT, SPRING MOUNT, RT		
12	86254890	2	SPRING EXT, .50 D X 4.0 L		
13	86010670	2	WASHER 5/16 FLAT SS		
14	86270830	2	NUT, 5/16-18 HEX NYLOCK S		
15	86273780	2	SCREW, 1/4-20 X .75 HHCS SS NP		

Onboard Charger - (Included with 1.012-597.0)



Onboard Charger - (Included with 1.012-597.0)

REF	PART NO.	QTY	DESCRIPTION	SERIAL NO. FROM	NOTES
1	86414920	1	CABLE ASM, SB50 TO RING	*(1)	
2	86414910	1	CORD ASM, 14/3 SJTX4IN IEC TO SPADE	*(1)	
3	86414900	1	CHRGR, SPE 36V 25A CBHF2-PFC	*(1)	
4	86403910	1	PLATE, OBC MOUNT		
5	86371530	1	WIRE, 20" RED/8, W/RING TERM		
6	86371520	1	WIRE, 20" BLK/8, W/RING TERM		
7	86366080	4	STANDOFF, 10-32 X 1.0, NYL		
8	86363800	1	CORD ASM, 16/3 SGT X 6FT BLK		
9	86005670	1	NUT, 1/2-14 CONDUIT LK STL ZNPLT		
10	86005700	2	NUT, 10-32 HEXSTRW LK STL ZNPLT		
11	86307990	1	WIRE, 10", GRN/14 76010 X 76010		
12	86277640	2	SCREW, 1/4-20 X .75 PHTRHMS SS		
13	86264940	1	CABLE TIE, 11.38" UL/CSA		
14	86256180	1	STRAIN RELIEF, 1/2 NPT (.48ID)		
15	86255910	2	STANDOFF, 1/4-20 X 1.0 HEX INS		
16	86006850	2	SCREW, 1/4-20 X 1.25 SCHSET CP SS		
17	86005710	6	NUT, 1/4-20 HEXSTRW LK STL ZNPLT		
18	86371540	2	WIRE, ASM, OBC INTERRUPT		
19	86360460	1	CHARGER, SPE 36V 20A CBHF2		

Serial Number

REF. NO.	MODEL: SERIAL #
1	10061510000847,10061530000110,10061590000259,10061610000042,10061680000482, 10061790000064,10125970000048

