

# KÄRCHER

makes a difference

## KÄRCHER IN INDIA FOR OVER 20 YEARS



### KÄRCHER PROFESSIONAL RANGE 2020

Experience how Kärcher makes a difference.



## Kärcher, the worldwide market leader

All over the world, the name Kärcher stands for power, quality, innovation and cleaning expertise that has been setting the highest of standards for 80 years. As the inventor of high pressure cleaning, Kärcher is today a world market leader and one of the driving forces behind new technological developments. Kärcher employs more than 13,000 people and has more than 100 subsidiaries all over the world. More than 900 engineers and technicians at 5 engineering centers are working on further improvements and new products, using the most advanced technologies in design, development and testing in their quest for even better performance, long service life and better environmental protection. They are guided by the principle that the customer is the measure of all things.

# 80 YEARS



reddot design award



Focus Energy



### Innovative from the very beginning

In 1950 Kärcher developed the first hot water high pressure cleaner for professional cleaning.

### Degree of innovation

More than 2000 patents have been registered from 1935 till today. 95% of our products are less than 5 years old.

### Excellent performance

Every year Kärcher receives awards, commendations and certificates for design, ergonomics, performance and environmental protection.

### All over the world

Kärcher is active in over 190 countries.

### Worldwide customer service

More than 40,000 sales outlets all over the world provide a support network that is second to none and enable our customers to find fast and comprehensive help with all their questions about cleaning and our products.

### Clean Environment

Kärcher engineers work on environmental protection daily with new products, technologies and investments in production facilities.







## Cold Water High Pressure Cleaners



# KÄRCHER



HD 5/12 C



HD 6/15-4 Classic



HD 6/15 M



HD 7/10 CXF



HD 10/25 - 4 S



HD 10/15-4 Cage Food

S. No.	Machine Model	Supply Voltage (Phase)	Water Flow (l/hr)	Max. Pressure (bar)	Operating Pressure (bar/Mpa)	Power Rating (kW)	Weight (kg)	Dimension (l x w x h) (mm)
1	HD 5/11 Cage Classic	1	500	160	110/11	2.2	22	475x330x332
2	HD 6/15 - 4 Classic	1	450-600	190	70-150/7-15	3.4	52	700x455x1010
3	HD 9/20 - 4 Classic	3	520-900	240	70-200/7-20	6.9	56	700x455x1010
4	HD 5/12 C	1	500	150	120/12	2.3	22	360x375x925
5	HD 6/15 M	1	560	200	150/15	3.1	30	400x456x960
6	HD 6/15 G* KAP	1	600	200	150/15	4.1	41.6	799x637x1097
7	HD 7/10 CXF	3	250 - 700	180	120 / 12	4.5	36.5	360x400x925
8	HD 7/16 Cage	3	400 - 700	220	70-160 / 7-16	4.3	53.5	625x500x360
9	HD 8/18 - 4 M	3	760	230	30-180 / 3-18	4.6	41	400x456x960
10	HD 10/25 - 4 S	3	500-1000	275	30-250/3-25	9.2	62	560x500x1090
11	HD 10/15 - 4 Cage Food *	3	440-990	175	20-145 / 2-14.5	6.4	68	650x521x1100
12	HD 10/16-4 Cage,Ex *	3	1000	220	160 / 16	5.5	111	980x720x1100
13	HD 9/23 De	Yanmar-Diesel	400-930	270	40-230 / 4-23	7.4	108	870x725x1170

## Hot Water High Pressure Cleaners



HDS 6/14 C



HDS 8/18-4 C



HDS 8/16 - 4 kW - 4 E  
(12/24/36 kW)



HDS 10/20-4M



HDS 13/20-4S

S. No.	Machine Model	Supply Voltage (Phase)	Water Flow (l/hr)	Operating Pressure (Bar)	Power Rating (kW)	Maximum Temperature (°C)	Fuel Tank (l)	Detergent Tank (l)	Weight (kg)	Dimension (l x w x h) (mm)
1	HDS 6/14 C	1	240 - 560	30-140	3.6	80	15	-	100	1060x650x920
2	HDS 8/18-4 C	3	300-800	30-180	6	80-155	15	15.5	112	1060x650x920
3	HDS E 8/16-4M 24kW	3	300 - 760	30 - 160	28.5	45-85	Electrical	20 + 10	112	1330x750x1060
4	HDS 10/20 - 4 M	3	500 - 1000	30 - 200	7.8	80-155	25	-	171	1330x750x1060
5	HDS 12/18-4 S	3	600 - 1200	30 - 180	8.4	80-155	25	-	178	1330x750x1060
6	HDS 13/20-4 S	3	600 - 1300	30 - 200	9.3	80-155	25	-	188.5	1330x750x1060

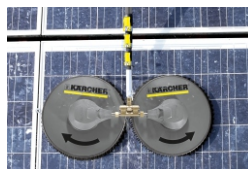
## Related Accessories



FR 30  
Splash Guard



FRV 30  
Splash Guard with Suction



iSolar 800  
Solar Panel Cleaning



Dirt Blaster



Drain Cleaning Hose

\* Longer Delivery Time

Products shown in the photographs may vary from the actual





HD 13/50-4 Classic



HD 13/35-4 Classic



HD 18/50-4 Cage Adv



HD 9/100-4 Cage Classic

S. No.	Machine Model	Supply Voltage (Phase)	Water Flow (l/hr)	Inlet Temperature (max °C)	Working Pressure (bar/Mpa)	Motor Rating (kW)	Weight (kg)	Dimension (l x w x h) (mm)
1	HD 13/50-4 Classic	3	500-1300	60	500/50	22	275	1110×800×950
2	HD 13/35-4 Classic	3	500-1300	60	100-350/10-35	15	230	1110×800×950
3	HD 18/50-4 Cage Adv	3	1800	60	500/50	30	317	747×1317×1093
4	HD 9/100-4 Cage Classic	3	900	45	1000/100	30	392	1395×789×1088

**Ultra High Pressure Cleaners - Trailer**



HD 9/23 De Tr1

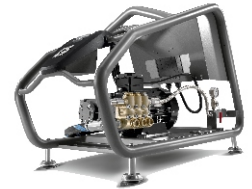


HDS 9/50 De Tr1

**HP System for Special Media**



HDCI 30/10-4 ST Dw  
(for DM Water)



HDCI 30/5-4 ST So-Ex  
(for Solvent)

S. No.	Machine Model	Engine Performance (kW)	Water Flow (l/hr)	Pressure (Bar/MPa)	Diesel Consumption full load (kg/hr)	Water Tank Size (l)	Weight (kg)	Dimension (l x w x h) (mm)
1	HD 9/23 De Tr1	7.4	400-930	40-230/4-23	-	1000	500	3560×1496×1484
2	HDS 9/50 De Tr1	19	500-900	150-500/15-50	9.7	500	1000	3646×1747×1735

S. No.	Machine Model	Supply (Phase)	Supply Voltage (V / Hz)	Water Flow (l/hr)	Maximum Pressure (Bar)	Power Rating (kW)	Maximum Temperature (°C)	Weight (kg)
1	HDCI 30/10-4 ST Dw	3	400 / 50	3000	100	11	60	190
2	HDCI 30/5-4 ST So-Ex	3	400 / 50	3000	50	5.5	60	242

**\* Longer Delivery Time**

Products shown in the photographs may vary from the actual





**IVR-L 100/24 - 2**



**IVS 100/55 M**



**IVC 60/30 Tact2**



**IVR 100/30 Ef**



**IVM 60/36-3**

S. No.	Solid and Dust Vacuum	Supply Phase/ Voltage (V)	Air Flow Rate (l/s or m³/hr)	Vacuum (mbar/kPa)	Container Capacity(l)	Power Rating in Operation (kW)	Filter Area (m²)	Hose Dia (mm)	Weight (kg)	Dimension (l x w x h) (mm)
1	IVS 100/55 M *	3 / 400	138/500	250/25	100	5.5	2.2	ID 70	145	1202x686x1465
2	IVR 100/30 Ef *	3 / 400	87 /315	260 / 26	100	3	1.75	ID 70	220	1735x760x1800
3	IVM 60/36-3 *	1 / 220-240	221/799	254/25.4	60	3.6	2.2	ID 70	68	1020x680x1490
4	IVC 60/30 Tact2 *	3 / 400	68/244	286/28.6	60	3	1.9	ID 70	131	970x690x1240
5	IVM 60/30 M Z22 *	3 / 400	68/244	286/28.6	60	3	2.2	ID 70	102	1040x680x1840

S. No.	Liquid and Swarf Vacuum	Voltage/ Frequency (V/hz)	Air Flow Rate (l/s)	Vacuum (mbar/ kPa)	Sound Pressure Level dB(A)	Container Capacity (l)	Intake Performance (kW)	Hose Dia (mm)	Weight (kg)	Dimension (l x w x h) (mm)
1	IVR-L 100/24-2 *	220-240 / 50-60	148	230 / 23	68	100	2.4	ID 50	44	640x620x1060

**Me: Stainless Steel Ap: Manual Pressed Filter Cleaning TC: Tilting Container TACT/TACT2: Automatic Filter Cleaning**

**Cleaning Devices For Industrial Cleaning**



**PC 100 M2 BIO**



**PC 60/130 T**



**IB 7/40**



**WWP 45**

S. No.	Parts Cleaner	Pressure (bar/Mpa)	Flow Rate (l/h)	Working Area (mm)	Load Capacity (kg)	Tank Capacity (l)	Weight (kg)	Connection Load (kW)	Dimension (l x w x h) (mm)
1	PC 100 M2 BIO *	0.3/0.03	900	1041x660	100	80	44	1	952x1181x1067
2	PC 60/130 T *	1.5/0.15	4500	-	130	100	165	5.5	1080x1000x1250

S. No.	Dry Ice Blasting	Air Pressure (bar/Mpa)	Air Quality	Air Flow (m³/min)	Sound Pressure Level (dB(A))	Dry Ice Capacity (kg)	Dry Ice Consumption (kg/h)	Weight (kg)	Pallets (Dia-mm)	Dimension (l x w x h) (mm)
1	IB 7/40 Classic *	2-10/0.2-1	Dry & Oil Free	0.5-3.5	99	15	15-50	69	3	768x510x1100

S. No.	Waste Water Pump	Flow rate (m³/h)	Max. suction height (m)	Max. delivery head (m)	Max. particle size (mm)	Motor type	Cubic capacity (cm³)	Weight (kg)	Motor rating (kW/hp)	Dimension (l x w x h) (mm)	Tank capacity (l)
1	WWP 45	45	7	25	30	Petrol	196	35.7	4.8 / 6.5	629 x 425 x 445	3.6

**Work Protection**



**Safety Goggles**



**Protective Gloves**



**Wet Work Protection Suit**



**Safety helmet with hearing protection & visor**

**Related Accessories**



**Floor Nozzle**



**Longopac Disposal System**



**Pipe Cleaning Nozzle**



**Triangular Nozzle**



**Industrial Kit**

**\* Longer Delivery Time**

Products shown in the photographs may vary from the actual



## Dry Vacuum Cleaners



# KÄRCHER



T 15/1



BV 5/1 BP



T 9/1 BP



CV 38/2 Adv



CV 48/2



CV 60/2 RS

S. No.	Machine Model	Air Flow Rate (l/s)	Vacuum (mbar)	Sound Level (dB(A))	Container Capacity (l)	Max. Power Rating		Weight (kg)	Hose Dia (mm)	Dimension (l x w x h) (mm)
						(W)	Brush (W)			
1	T 14/1 Classic	47	285	69	14	1600	-		35	355x310x466
2	T 15/1	61	244	59	15	1300	-	8	32	406x320x434
3	BV 5/1 Ep	53	240	62	5	800	-	6.5	35	400x320x540
4	BV 5/1 Bp	46	207	57	5	730	-	8.7	32	400x320x636
5	T 9/1 Bp	46	207	62	9	730	-	7.2	32	419x325x381
6	CV 38/2 Adv	40	200	65	5.5	850	150	8.8	35	370x390x1215
7	CV 48/2	40	200	65	5.5	850	150	9.7	35	1215x485x350
8	CV 60/2 RS*	34	117	68	17	1224	373	123	-	1120x640x1290

## Wet & Dry Vacuum Cleaners



NT 22/1 Ap L



NT 27/1



NT 40/1 Ap L



NT 65/2 Ap



NT 75/2 Ap Me TC

S. No.	Machine Model	Air Flow Rate (l/s)	Vacuum (mbar)	Sound Level (dB(A))	Container Capacity (l)	Power Rating (W)	Weight (kg)	Hose Dia (mm)	Dimension (l x w x h) (mm)
1	NT 20/1 Classic	59	227	78	20	1500	7.4	35	375x360x520
2	NT 30/1 Classic	59	227	78	30	1500	8	35	375x360x645
3	NT 70/2 Classic	2 x 53	225	76	70	2300	18.5	40	580x510x850
4	NT 22/1 Ap L	71	255	72	22	1350	6.1	35	380x370x480
5	NT 27/1	67	200	72	27	1380	7.5	35	420x420x525
6	NT 40/1 Ap L	74	254	70	40	1380	12.4	35	525x370x630
7	NT 65/2 Ap	2 x 74	254	73	65	2760	20	40	600x480x920
8	NT 65/2 TACT <sup>2</sup>	2 x 74	254	73	65	2760	26.5	40	575x490x880
9	NT 75/2 Ap Me TC	2 x 74	254	73	75	2760	26.5	40	575x490x880

## Related Accessories



Vacuum Tool Kit



Roller Brush



Fleece Filter



Hepa Filter



Filter Bag

Me : Stainless Steel  
 Ap : Manual Pressed Filter Cleaning  
 TC : Tilting Container  
 TACT/TACT<sup>2</sup> : Automatic Filter Cleaning

\* Longer Delivery Time

Products shown in the photographs may vary from the actual





**Puzzi 10/1 \*EU**



**Puzzi 10/1 + Hand \*EU**



**BRC 45/45 C Ep**

S. No.	Machine Model	Air Flow Rate (l/s)	Vacuum (mbar)	Spray Rate (l/min)	Spray Pressure (bar)	Fresh / Dirty Water (l)	Vacuum (W) / Brush (W)	Area Performance (m <sup>2</sup> /h)	Working Width (Brush) (mm)	Weight (kg)	Dimension (l x w x h) (mm)
1	Puzzi 10/1 *EU	54	220	1	1	10 / 9	-	20 - 25	-	10.7	710x330x440
2	Puzzi 10/1 + Hand *EU	54	220	1	1	10 / 9	-	20 - 25	-		690x325x440
3	BRC 45/45 C Ep	45	300	0.7 (ic)/3.2 (dc)	3.5 (ic) / 7 (dc)	45 / 38	1100 / Yes	350 (dc)/1000 (ic)	410	48	770x545x1250

ic	Interim Cleaning / iCapsol
dc	Deep Cleaning / Spray Extraction

**Air Blowers**



**AB 30 Classic**

**Steam Cleaners**



**SG 4/4**



**SGV 8/5**

S. No.	Machine Model	Air Flow Rate (Levels 1/2/3) (m <sup>3</sup> /min)	Fan Speed (rpm)	Cable Length (m)	Power Rating (W)	Weight (kg)	Dimension (l x w x h) (mm)
1	AB 30 Classic	29.3	1350 Max.	6.1	520	8.54	405x400x415

S. No.	Machine Model	Voltage (V)	Heating Output (W)	Tank Capacity (l)	Steam Pressure (bar)	Weight (kg)	Dimension (l x w x h) (mm)
1	SG 4/4	230	2300	2 / 2.4	4	8	475x320x275
2	SGV 6/5	220	3000	5	6	45	640x495x965
3	SGV 8/5	220	3000	5	8	45	640x495x965

**Related Accessories**



Hand Tool



Bio Descaler



Trolley



Window Nozzel

**\* Longer Delivery Time**

Products shown in the photographs may vary from the actual



KM 70/15 C



KM 85/50 R Bp



KM 100/100 R P



KM 120/250 R D Classic



KM 150/500 Classic

S. No.	Machine Model	Drive / Drive Power	Max. Area Performance (m <sup>2</sup> /h) with 1/2 Side Brushes	Working Width without/with 1/2 Side Brushes (mm)	Waste Container (l)	Working Speed (km/hr)	Filter Area (m <sup>2</sup> )	Weight (kg)	Dimension (l x w x h) (mm)
1	KM 70/15 C	Manual	2800	480/700/960	42	Push	-	25	1300x810x1040
2	KM 70/20 C	Manual	2800	480/700/960	42	Push	Dust Filter	23	1300x850x1050
3	KM 75/40 W P	Honda/3.3 kW	3375	550/750/-	40	4.5	1.8	84	1430x780x1180
4	KM 75/40 W Bp	24V / 400W	3375	550/750/-	40	4.5	1.8	78/124	1430x780x1180
5	KM 85/50 R Bp	DC Motor/1000W	5100/6300	615 / 850/1050	50	6	2.1	178	1270x870x1170
6	KM 100/100 R P	* Honda/6.7kW	10400	700/1000/1300	100	8	6	340	2006x1005x1343
7	KM 100/100 Bp	* 24V / 750W	7800	700/1000/1300	100	6	6	320/540	2006x1005x1343
8	KM 120/250 R D Classic	* Yanmar/15.8 kW	10800/13000	900/1200/1450	250	9	6	840	2082x1250x1450
9	KM 120/250 R Bp Classic	* DC Motor/5 kW	7200/8700	900/1200/1450	250	6	6	740	2082x1250x1450
10	KM 150/500 Classic	* Yanmar/21.6kW	21000	1200/1500	500	14	8	1440	2442x1570x1640

**Air Purifiers**



AF 100

**Battery-Powered Window Vacs**



WVP 10 Adv

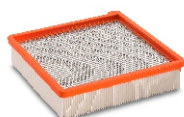
S. No.	Machine Model	Sound Pressure Level (dB(A))	Suitable Room Size (m <sup>2</sup> )	Current Type (Ph/V/Hz)	Rated Input Power (W)	Weight (kg)	Dimension (l x w x h) (mm)
1	AF 100	48	100	1/220-240/50-60	80	11.3	380 x 380 x 713

S. No.	Machine Model	Waste Water Tank (ml)	Battery Charging Time (min)	Voltage (V)	No. of Batteries Included in Delivery	Fast Charger Included	Width of Suction Nozzle (mm)	Weight (kg)	Dimension (l x w x h) (mm)
1	WVP 10 Adv	200	60	100-240	2	Yes	280	0.7	125x280x325

**Related Accessories**



Litter Picker



Flat Filter



Light



Canopy

**\* Longer Delivery Time**

Products shown in the photographs may vary from the actual





**Mop Vac**



B 60/10

S. No.	Machine Model	Fresh / Dirty Water Tank (l)	Max. Area Performance (m <sup>2</sup> /h)	Weight (kg)	Dimension (l x w x h) (mm)
1	B 60/10	10	1500	21	1356 x 635 x 1311

**Escalator Cleaner**



BR 45/10 Esc



BR 47/35 Esc

S. No.	Machine Model	Working Width (mm)	Working Width Vacuum (mm)	Fresh/Dirty Water Tank (l)	Rotation Speed (rpm)	Brush Motor Rating (W)	Suction Motor (W)	Water Throughput (l/h)	Pressure (bar)	Weight (kg)	Dimension (l x w x h) (mm)
1	BR 45/10 Esc *	450	450	-	190 / 290	190	1500	-	-	44	800x460x220
2	BR 47/35 Esc *	470	470	35	870 / 1090	1100	800	60	4 - 7	90	1200x670x1100

**Single Disc Machines**



BD 17/5 C



BDS 43/150 C Classic \*IN



BDS 43/Duo C I Adv



BDP 50/1500 C

S. No.	Machine Model	Working Width (mm)	Power Rating (W)	Brush Contact Pressure (g/cm <sup>2</sup> )	Pad Rotation Speed (rpm)	Power Supply (V/hz)	Working Width Vacuum (mm)	Max. Area Performance (m <sup>2</sup> /h)	Weight (kg)	Dimension (l x w x h) (mm)
1	BD 17/5 C	170 / 200	230	-	0 - 470	50	-	-	5	360x180x330
2	BDS 43/150 C Classic *IN	430	1500	30	150	220-240 / 50	-	-	43	590x430x1180
3	BDS 43/Duo C I Adv	430	1560	42	150-300	220-240/50	-	-	47	630x430x1200
4	BDP 50/1500 C	508	1100	4	1500	230 / 50	560	900	34.5	760x560x1250

**Related Accessories**



Pump Spray Bottle



Suction Ring



Diamond Pad



Universal Pad Holder

**\* Longer Delivery Time**

Products shown in the photographs may vary from the actual



BR 30/4 C



BR 45/22



BD 43/40 Classic EP



BD 50/60 Classic EP



BD 50/50 Classic

S. No.	Machine Model	Working Width Brush (mm)	Working Width Vacuum (mm)	Motor Rating/Traction Motor (W)	Fresh/Dirty Water Tank (l)	Brush Contact Pressure/Rotation Speed (g/cm <sup>2</sup> / rpm)	Max. Area Performance (m <sup>2</sup> /h)	Power Supply (V/hz)	Battery Capacity (V/Ah)	Weight (kg)	Dimension (l x w x h) (mm)
1	BR 30/4 C	300	300	820	4 / 4	100/1450	200	230/50	-	11.5	390x335x1180
2	BR 40/10 C	400	400	1900	10 / 10	100-200/1100	400	230/50	-	30	520x470x380
3	BD 43/40 Classic EP	430	740	800	40 / 40	-/235	1720	230/50	-	56	1137x505x1028
4	BD 50/60 Classic EP	500	510	1200	60 / 60	-/155	2000	230/50	-	55/117	1185x540x1000
5	BD 50/50 Classic BP	500	510	1100	50 / 50	-/155	2000	-	24/-	55/117	1185x540x1000

**Stand-On & Ride-On Scrubber Driers**



BD 50/70 Bp Classic



B 90 R Bp



B 95 RS



B 90/160 R Classic Bp



B 250 R Bp



B 300 RI

S. No.	Machine Model	Working Width Brush (mm)	Working Width Vacuum (mm)	Motor Rating (W)	Fresh/Dirty Water Tank (l)	Max. Area Performance (m <sup>2</sup> /h)	Battery Capacity (V/Ah)	Weight (kg) (With Battery)	Sweeping Container (l)	Dimension (l x w x h) (mm)
1	BD 50/70 R Bp Classic (Disc) *	510	850	300	70 / 75	2300	24 / 105	194	-	1310x590x1060
2	B 90 R Bp (Disc) *	550/700 ^	850	600	90 / 90	3300/4500	24/180	269	-	1450x800x1200
3	BD 90/160 R Classic Bp(Disc) *	900 ^	1200	600	160/160	5400	36/300	269	-	1750x970x1445
4	B 95 RS *	750 ^	940	600	95 / 95	2250/3000	24/180	269	-	1425x765x1270
5	B 200 R Bp (Disc) *	750/900 ^	1060	600	200/200	4500/5400	36/180	565	9	1860x910x1410
6	B 250 R Bp (Disc) *	1000/1200 ^	1420	6900	250 / 250	8000/9600	36 / 630	1270	24	1900x1260x1550
7	B 300 RI (Roller) *	1045	1440	25000	300 / 300	16550	Diesel	1750	180	2400x1540x1760

^Disc Brush Head available, Roller option also available

**Related Accessories**



Brush Head



Curved Squeegee



Pad Roller Shaft



Roller Brush



Pad

**\* Longer Delivery Time**

Products shown in the photographs may vary from the actual





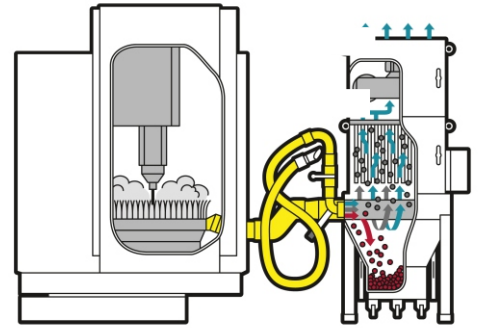
## RINGLER® Kärcher Group



**Liquid And Swarf Vacuums**

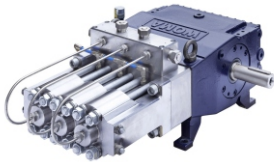


**High-performance Industrial Vacuums**



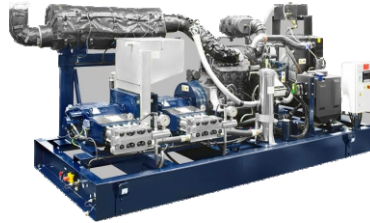
**Dust Removal Systems**

## WOMA® Kärcher Group



**High Pressure Plunger Pump**

Max. operating pressure of 4000 bar and max. flow rate of 5.3 l/min

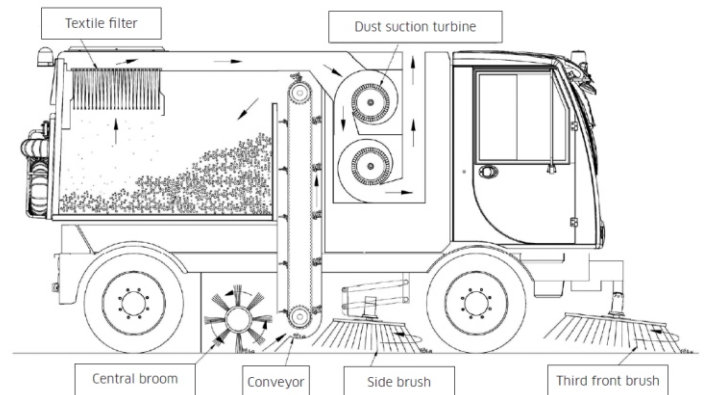


**High Pressure Water Jetting Systems**



**Waterblast Tools and Accessories**

## ISAL Kärcher Group



**ISAL 6000 - The New Generation Sweeper**





## Please contact us for more information:

**Toll Free No: 1800 1234 180 (9:30 AM - 5 PM, Mon - Fri)**

**E-Mail: [info@in.kaercher.com](mailto:info@in.kaercher.com) | [service@in.kaercher.com](mailto:service@in.kaercher.com)**

**[www.kaercher.com/in](http://www.kaercher.com/in)**

### Branch Offices:

#### Ahmedabad

36-37 FF, Orchid Mall,  
Nr. Govardhan Party Plot,  
Thaltej,  
Ahmedabad-380 059,  
Gujarat

#### Bengaluru

No. 504, IV Block, 1st Stage,  
100 Feet Outer Ring Road,  
H.B.R. Layout, Nr. Hennur  
Cross,  
Bangalore-560 043,  
Karnataka

#### Chennai

No. 54,  
Alappakkam Main Road,  
Maduravoyal,  
Chennai-600 095,  
Tamil Nadu

#### Cochin

46/561,  
Kottankavu Junction,  
Vennala (PO),  
Ernakulam-682 028,  
Kerala

#### Indore

R 96, Mahalaxmi Nagar,  
Indore-452 010,  
Madhya Pradesh

#### Jaipur

5th floor, Sunny Trade Centre,  
New Atish Market,  
Gopal Pura Bypass,  
Mansarovar, Jaipur - 302020,  
Rajasthan

#### Jamshedpur

#139, New Baradwari,  
Sakchi,  
Jamshedpur - 831001,  
East Singhbhum

#### Kolkata

Unit No. 409,  
PS IXL, Atghorha,  
New Town Rajarhat,  
Kolkata - 700136,  
West Bengal

#### Mumbai

A 206 & B 009,  
Punit Industrial Estate,  
TTC Industrial Area,  
Thane - Belapur Road,  
Turbhe,  
Navi Mumbai-400 705  
Maharashtra

#### Noida

D-120, Sector 63,  
Noida-201 307,  
Uttar Pradesh

#### Panchkula

Plot No. 375,  
Industrial Area, Phase-2,  
Near BEL Factory,  
Panchkula-134 113,  
Haryana

#### Pune

Regus Business Centre Pune  
Pvt Ltd, Level 2,  
Bund Garden Rd, Connaught  
Place, Pune - 411001  
Maharashtra

#### Secunderabad

Flat No. 001, Ground Floor,  
Rehana Manzil,  
Plot No. 12/13,  
Sanjeevaiah Nagar,  
House Building Society,  
Sikh Village,  
Secunderabad-500 009,  
Telangana

#### Vadodara

Office Number 418 & 419,  
Orchid Plaza,  
Behind McDonald's ,  
Sama Savli Road,  
Vadodara-390024,  
Gujarat

### Head Office:

D-120, Sector 63,  
Noida-201 307,  
Uttar Pradesh  
Ph: +91 120 7111800  
Fax: +91 (120) 7111900

**Dealer Stamp Here:**