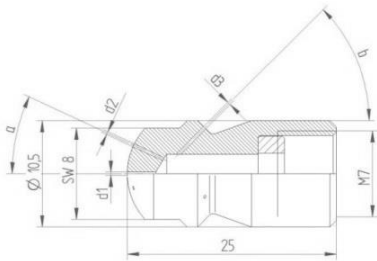


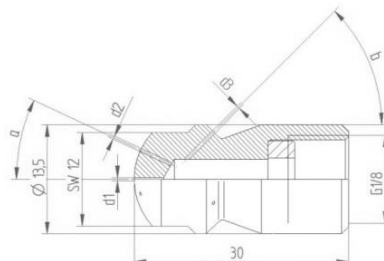
Pipe cleaning nozzle 1500 bar

RRD 10, 14, 16

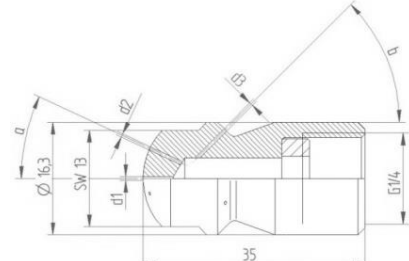
Appropriately designed nozzles are required for efficient and economic pipe cleaning, which can be used up to a maximum operating pressure of 1500 bar.



Pipe cleaning nozzle 10



Pipe cleaning nozzle 14



Pipe cleaning nozzle 16

Special benefits

- Wide range for every application
- Sturdy and durable design

Technical data RRD 10

Designation RRD 10-...	Front nozzle d1	Jet nozzle d2			Pulling nozzle d3			Flow rate [l/min]			Material- Number
	d1 [mm]	d2 [mm]	Angle a	n	d3 [mm]	Angle b	n	500 bar	1000 bar	1500 bar	
f0,5- z0,5-45°-3	0,5	-	-	-	0,5	45°	3	10	14	17	9.916-924.0
f0,5- z0,5-60°-5	0,5	-	-	-	0,5	60°	5	15	21	26	9.916-925.0
s0,5-30°-3 z0,5-45°-5	-	0,5	30°	3	0,5	45°	5	20	28	34	9.916-926.0
f0,5- z0,7-45°-3	0,5	-	-	-	0,7	45°	3	17	24	29	9.916-927.0
f0,5- z0,7-60°-5	0,5	-	-	-	0,7	60°	5	27	38	36	9.916-928.0
s0,7-30°-3 z0,7-45°-5	-	0,7	30°	3	0,7	45°	5	39	55	67	9.916-929.0
f0,5- z0,8-60°-4	0,5	-	-	-	0,8	60°	4	28	39	48	9.916-930.0
f0,7- z1,0-60°-3	0,7	-	-	-	1,0	60°	3	34	49	59	9.916-931.0
s0,7-30°-3 z1,0-45°-3	-	0,7	30°	3	1,0	45°	3	44	62	76	9.916-932.0

Sealing ring (9.882-045.0) must be ordered separately.

Technical data RRD 14											
Designation RRD 14-...	Front nozzle d1	Jet nozzle d2			Pulling nozzle d3			Flow rate [l/min]			Material- Number
	d1 [mm]	d2 [mm]	Angle a	n	d3 [mm]	Angle b	n	500 bar	1000 bar	1500 bar	
f0,5- z0,5-45°-3	0,5	-	-	-	0,5	45°	3	10	14	17	9.916-933.0
f0,5- z0,5-60°-5	0,5	-	-	-	0,5	60°	5	15	21	26	9.916-935.0
s0,5-30°-3 z0,5-45°-5	-	0,5	30°	3	0,5	45°	5	20	28	34	9.916-936.0
f0,5- z0,7-45°-3	0,5	-	-	-	0,7	45°	3	17	24	29	9.916-937.0
f0,5- z0,7-60°-5	0,5	-	-	-	0,7	60°	5	27	38	36	9.916-938.0
s0,7-30°-3 z0,7-45°-5	-	0,7	30°	3	0,7	45°	5	39	55	67	9.916-939.0
f0,5- z0,8-60°-4	0,5	-	-	-	0,8	60°	4	28	39	48	9.916-940.0
f0,7- z1,0-60°-3	0,7	-	-	-	1,0	60°	3	34	49	59	9.916-941.0
s0,7-30°-3 z1,0-45°-3	-	0,7	30°	3	1,0	45°	3	44	62	76	9.916-942.0

Sealing ring (9.882-044.0) must be ordered separately.

Technical data RRD 16											
Designation RRD 16-...	Front nozzle d1	Jet nozzle d2			Pulling nozzle d3			Flow rate [l/min]			Material- Number
	d1 [mm]	d2 [mm]	Angle a	n	d3 [mm]	Angle b	n	500 bar	1000 bar	1500 bar	
f0,5- z0,5-45°-3	0,5	-	-	-	0,5	45°	3	10	14	17	9.916-943.0
f0,5- z0,5-60°-5	0,5	-	-	-	0,5	60°	5	15	21	26	9.916-945.0
s0,5-30°-3 z0,5-45°-5	-	0,5	30°	3	0,5	45°	5	20	28	34	9.916-946.0
f0,5- z0,7-45°-3	0,5	-	-	-	0,7	45°	3	17	24	29	9.916-954.0
f0,5- z0,7-60°-5	0,5	-	-	-	0,7	60°	5	27	38	36	9.916-955.0
s0,7-30°-3 z0,7-45°-5	-	0,7	30°	3	0,7	45°	5	39	55	67	9.916-956.0
f0,5- z0,8-60°-4	0,5	-	-	-	0,8	60°	4	28	39	48	9.916-957.0
f0,7- z1,0-60°-3	0,7	-	-	-	1,0	60°	3	34	49	59	9.916-958.0
s0,7-30°-3 z1,0-45°-3	-	0,7	30°	3	1,0	45°	3	44	62	76	9.916-959.0

Sealing ring (9.882-043.0) must be ordered separately.



Hose table 1		
Length [mm]	Material-Number	Weight [kg]
3000	9.917-301.0	0,50
6000	9.917-226.0	0,90
10000	9.917-302.0	1,20
12000	9.917-227.0	1,50
15000	9.917-228.0	1,80
20000	9.917-229.0	2,40



Lance pipe table 2		
Length [mm]	Material-Number	Weight [kg]
1.000	9.891-240.0	0,49
2.000	9.891-241.0	0,98
3.000	9.891-242.0	1,47
4.000	9.910-340.0	1,96
5.000	9.891-244.0	2,45
6.000	9.891-245.0	2,94
7.000	9.911-021.0	3,44
9.000	9.891-736.0	4,42
10.500	9.891-778.0	5,20



Lance pipe table 3		
Length [mm]	Material-Number	Weight [kg]
1.000	9.891-233.0	1,10
2.000	9.891-234.0	2,20
3.000	9.891-235.0	3,30
4.000	9.891-236.0	4,40
5.000	9.891-237.0	5,50
6.000	9.891-238.0	6,60
7.000	9.891-239.0	7,70
10.500	9.891-777.0	11,60



Hose table 4		
Length [mm]	Material-Number	Weight [kg]
6.000	9.888-214.0	2,20
12.000	9.888-215.0	3,90
15.000	9.915-492.0	4,60
20.000	9.888-216.0	6,10



Hose table 5		
Length [mm]	Material-Number	Weight [kg]
6.000	9.888-219.0	3,30
12.000	9.888-220.0	5,80
15.000	9.915-494.0	6,90
20.000	9.888-221.0	9,40

