



CONSTRUCTION & HEAVY EQUIPMENT

# CLEANING FOR HEALTH AND SAFETY





# COMPLETE CLEANING & DISINFECTING SOLUTIONS FOR THE CONSTRUCTION INDUSTRY

In a time when cleaning and hygiene is of the utmost importance, trust Hotsy, the #1 brand of choice among construction professionals. Whether cleaning a heavy equipment dealership, site trailers, dozers and trucks on location, Hotsy has a full complement of solutions - both portable and mobile. Your local Hotsy dealer also offers Kärcher floor care solutions and disinfectants, making them your one-stop resource. Hotsy - it's what the Pros use.

## PRESSURE WASHERS



**STATIONARY (HOT WATER)**  
Stationary, electric powered natural gas or LP fired hot water pressure washers can be plumbed into your facility, ideal for cleaning grease and oil residue.



**PORTABLE (HOT WATER)**  
When you need mobility, our gas engine pressure washers are ideal. They can be mounted on a trailer with water tank for cleaning on the go.



**HD GAS (COLD WATER)**  
Honda-powered aluminum-series cold water pressure washers. Easily configure from cart to skid to match your cleaning application.

**HOT WATER:**  
Heavy equipment  
Company trucks  
Trailers

**COLD WATER:**  
Parking lots  
Exterior buildings  
Shop floors  
Mobile cleaning

## DISINFECTION



**DUAL MISTER**  
Combat viruses with misting precision with the HD 2.0/1000 Dual Mister, an all-in-one mister and cold water pressure washer.



**PS 4/7 MISTER**  
The PS 4/7 Bp OBC misting system is designed to apply disinfectant (like Vital Oxide) to envelope surfaces much faster than wiping.



**VITAL OXIDE**  
Vital Oxide is a EPA disinfectant cleaner, odor eliminator and mold killer. A listed disinfectant for use against the coronavirus which causes COVID-19.

Offices & Lobbies  
Parts countertops  
Breakrooms  
Kitchens  
Restrooms  
Interior cabs  
Display equipment  
Tools & tool boxes  
Shop equipment  
Serviced equipment  
Company vehicles

## FLOOR CARE



**SWEEPERS**  
The KM 70/30 C walk-behind sweeper's main roller brush and side brush are electrically driven, making sweeping corners very simple.



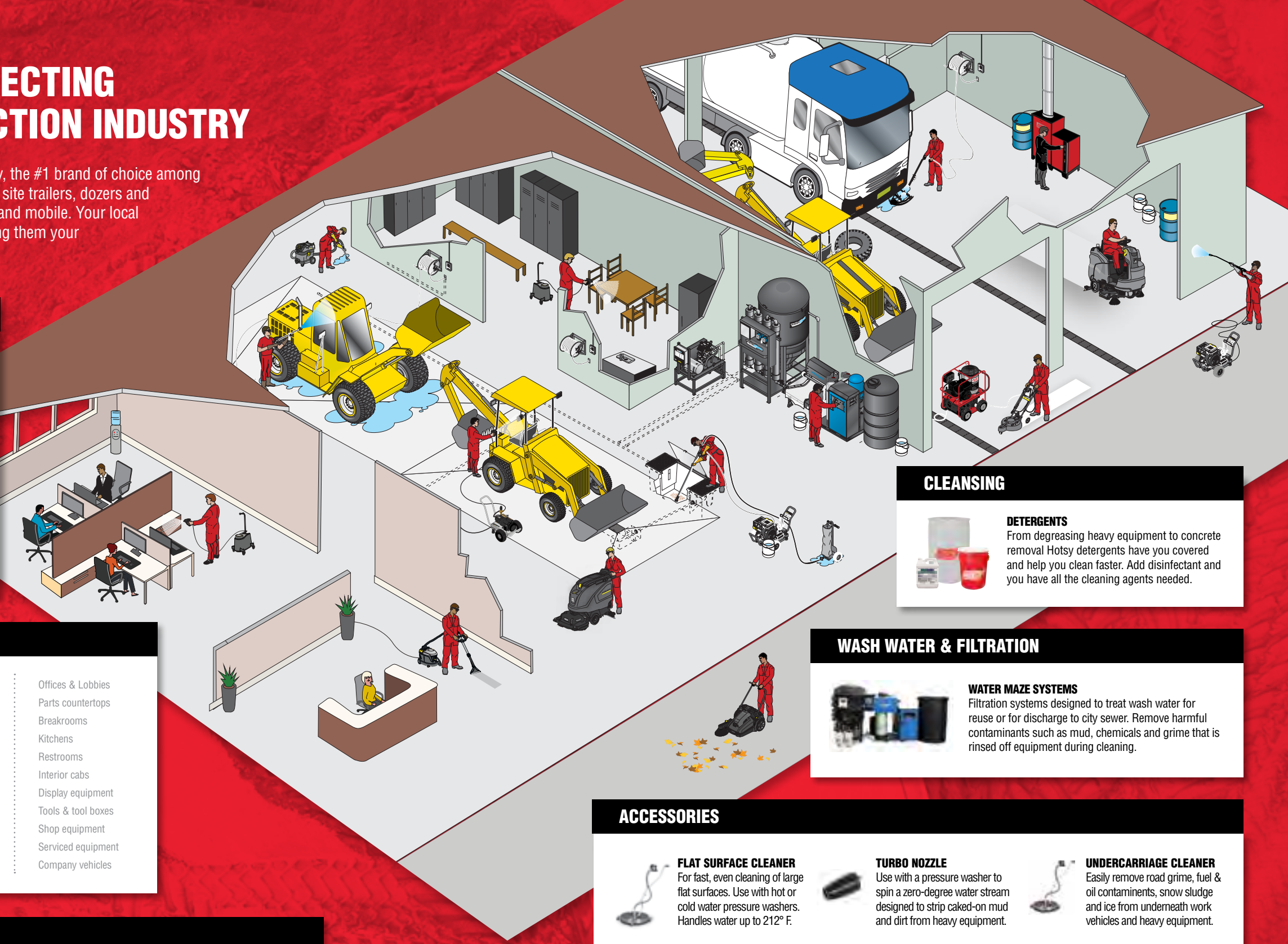
**SCRUBBERS**  
The BD 50/50 walk-behind and B 150 ride-on scrubbers provide convenient cleaning capability for the most demanding large area applications.



**VACUUMS**  
Compact and easy to transport, the NT 40/1 wet/dry vacuum cleaner with HEPA filtration is a shop floor's best friend.



**EXTRACTORS**  
The Puzzi 8/1 is a handy, compact and powerful spray extraction cleaner ideal for small areas and interim cleaning.



## CLEANSING



**DETERGENTS**  
From degreasing heavy equipment to concrete removal Hotsy detergents have you covered and help you clean faster. Add disinfectant and you have all the cleaning agents needed.

## WASH WATER & FILTRATION



**WATER MAZE SYSTEMS**  
Filtration systems designed to treat wash water for reuse or for discharge to city sewer. Remove harmful contaminants such as mud, chemicals and grime that is rinsed off equipment during cleaning.

## ACCESSORIES



**FLAT SURFACE CLEANER**  
For fast, even cleaning of large flat surfaces. Use with hot or cold water pressure washers. Handles water up to 212° F.



**TURBO NOZZLE**  
Use with a pressure washer to spin a zero-degree water stream designed to strip caked-on mud and dirt from heavy equipment.



**UNDERCARRIAGE CLEANER**  
Easily remove road grime, fuel & oil contaminants, snow sludge and ice from underneath work vehicles and heavy equipment.

# HOTSY IS AMERICA'S #1 BRAND IN PRESSURE WASHERS.

In addition to a complete range of product solutions, your local Hotsy dealer is your best resource for parts, service and repair. Learn more and find your local dealer at [hotsy.com](https://hotsy.com).







**DISTRIBUTED BY**



**(800) 525-1976 ▪ [Hotsy.com](https://www.Hotsy.com) ▪ [info@Hotsy.com](mailto:info@Hotsy.com)**

Specifications & product descriptions subject to change without notice.  
©2021 Kärcher North America ▪ P/N HOT\_Con\_HeaSaf