

KÄRCHER

makes a difference



KÄRCHER SWEEPERS.

Compact. Walk-Behind. Ride-On.

PROFESSIONAL | SWEEPERS



KÄRCHER SWEEPERS

offer maximum sweeping performance, always and everywhere. Count on Kärcher for reliable and innovative commercial cleaning equipment and technology.



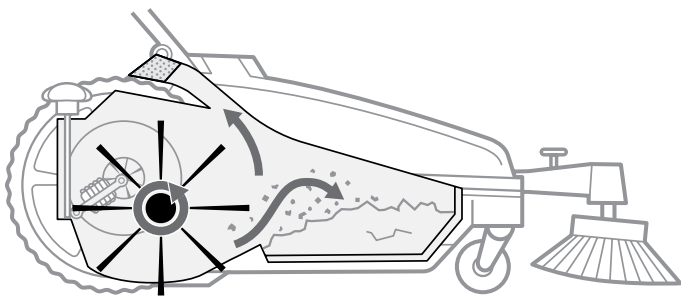
GET SWEPT AWAY WITH KÄRCHER.

BIG JOB OR SMALL, WE'VE GOT YOU COVERED.

When it comes to cleaning, no job is too big or too small for Kärcher sweepers. From compact manual sweepers to walk-behind and ride-on machines, to highly robust industrial ride-on sweepers, we have the perfect machine to fit your needs. Our sweepers are designed to be both powerful and efficient - built for getting into tight spaces where dirt hides, and covering surface areas up to 155,000 square feet per hour. We pride ourselves in not just providing you a piece of equipment, but building a relationship that is going to help you clean better, faster, safer and more affordably. With Kärcher, you have a partner in clean.

Studies show adding a sweeper to your exterior cleaning regimen reduces soil tracked indoors by up to 66%.





IT'S ALL IN THE DETAILS.

Every Kärcher sweeper features unique technology to make your job easier and save you both time and money.

- **Hit the ground running with EASY Operation.**

Prevent incorrect operation and extend the life of your sweeper with EASY Operation, Kärcher's operating system featuring user controls with self-explanatory symbols. Included on all ride-on and most walk-behind sweepers.

- **Crescent side brushes make sweeping corners a breeze.**

Our patented crescent side brush allows for the perfect cleaning of corners in just one pass, saving you time. Featured on models KM 105 and KM 125.

- **Built to meet the three pillars of quality.**

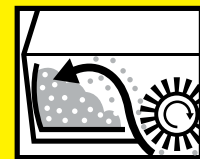
We know flexibility, reliability and durability are three of the most important factors in a machine. That's why we construct our sweepers with materials that are proven to last, with added features like portability and simple, one-step waste disposal.

HOW WE PUT DIRT IN ITS PLACE.

DIRECT THROW

This method implements a cylindrical roller broom that sweeps dirt into a forward-mounted hopper, utilizing 40-50% of the hopper's capacity.

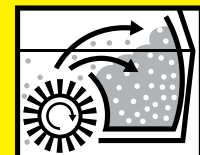
← Direction of travel



OVERTHROW

This system includes a hidden adjustable roller brush that rotates at high speeds, throwing dirt up and back into a trailing container, utilizing 85-100% of its capacity.

← Direction of travel



WHERE WE SHINE.

-  Agriculture
-  Automotive
-  Building Service Contractors
-  Construction
-  Healthcare
-  Home & Garden
-  Hospitality
-  Industry and Manufacturing
-  Restaurants and Catering
-  Transportation

COMPACT

An excellent choice for discrete and quick interim cleaning - low noise levels allow for daytime cleaning of quick spills.



EB 30/1	Cleaning path (in)	12
	Container capacity (in³)	67
	Operating noise level (dBA)	56
	Battery runtime (min)	30-45
	Weight (lbs)	6
	Standard battery charge time (hr)	12
	Dimensions (in) L x W x H	10 x 12 x 43



EB 30/1

MAX AREA
PERFORMANCE

2,500

WALK-BEHIND

Kärcher's walk-behind sweepers are ideal for cleaning areas up to 39,600 square feet per hour. Available in both manual or battery power, fully adjustable main brooms and dust-free operation.



KM 70/20 C	Main broom working width (in)	19
	Working width with 1 side brush (in)	28
	Container (gal)	11
KM 70/30 C Bp Adv	Main broom working width (in)	19
	Working width with 1 side brush (in)	28
	Working width with 2 side brushes (in)	36
	Container (gal)	11
KM 75/40 W Bp	Main broom working width (in)	22
	Working width with 1 side brush (in)	30
	Container (gal)	10.5



KM 70/20 C



KM 70/30 C Bp Adv



KM 75/40 W Bp

30,000

30,800

36,328

RIDE-ON

Let Kärcher sweep you off your feet and into the efficient world of ride-on machines. All models are customizable to fit your cleaning need.



KM 85/50 R Bp	Working width (in)	24
	Working width with 1 side brush (in)	33
	Battery power (V)	24
	Container (gal)	13
	Filter area (ft²)	23
KM 90/60 R Bp Adv	Working width (in)	24
	Working width with 1 side brush (in)	35
	Battery power (V)	24
	Container (gal)	16



KM 85/50 R Bp



KM 90/60 R Bp Adv

**MAX AREA
PERFORMANCE**

40,685

47,520

INDUSTRIAL

These robust, top-of-the-line sweepers are capable of cleaning up to 155,000 square feet per hour.



KM 105/110 R Bp	Main broom working width (in)	25
	Working width with 1 side brush (in)	41
	Battery power (V)	24
	Container (gal)	29

KM 125/130 R Bp	Main broom working width (in)	35
	Working width with 2 side brushes (in)	67
	Battery power (V)	24
	Container (gal)	34
	Filter area (ft ²)	59

KM 130/300 R Bp*	Main broom working width (in)	39
	Working width with 1 side brush (in)	51
	Battery power (V)	36
	Container (gal)	79
	Filter area (ft ²)	59

KM 150/500 R Bp*	Main broom working width (in)	47
	Working width with 1 side brush (in)	59
	Battery power (V)	48
	Container (gal)	132
	Filter area (ft ²)	75

*Also available in Lpg power



KM 105/110 R Bp



KM 130/300 R Bp



KM 125/130 R Bp



KM 150/500 R Bp

72,770

112,000

117,110

155,000

Please contact us for more information:

North America

6398 N. Kärcher Way
Denver, CO 800019 U.S.A.

Phone +1 800 444-7654
Fax +1 866 271-0520

www.karcher.com/us