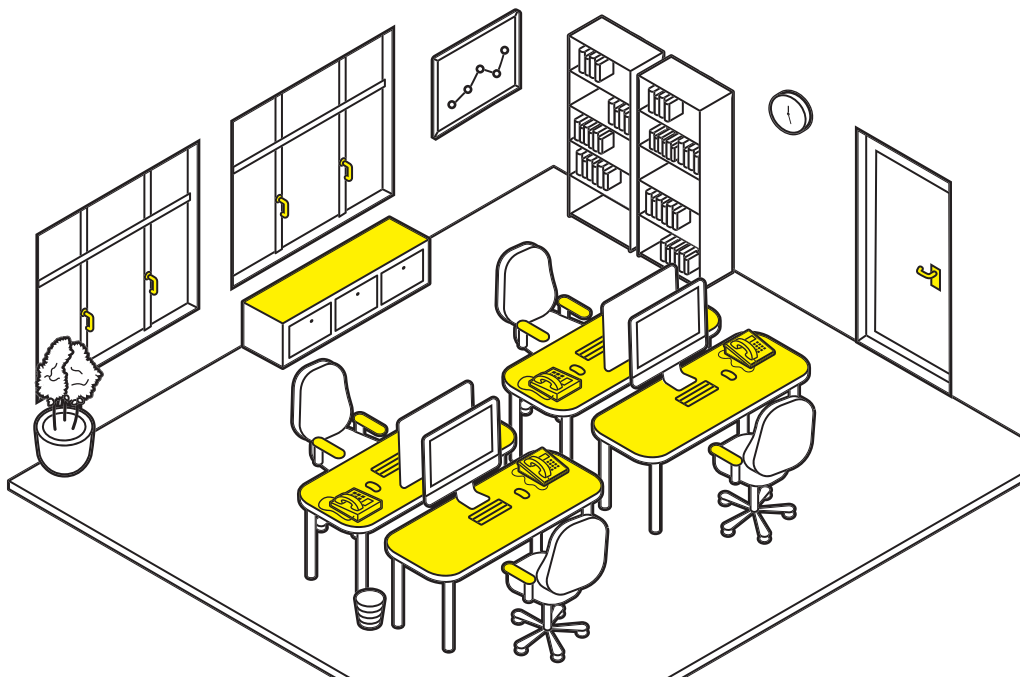


## SMALL OFFICE: CRITICAL TOUCH POINT TREATMENT



## KEY TOUCH POINTS

Focus on points that are touched frequently by several people throughout the day.



Desk phones



Switches



Arm rests of chairs



Desks and sideboards



Door and window handles

## PRODUCT REFERENCE

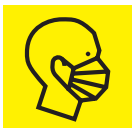


Microfibre

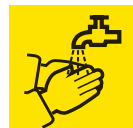


RM 735

### Before cleaning

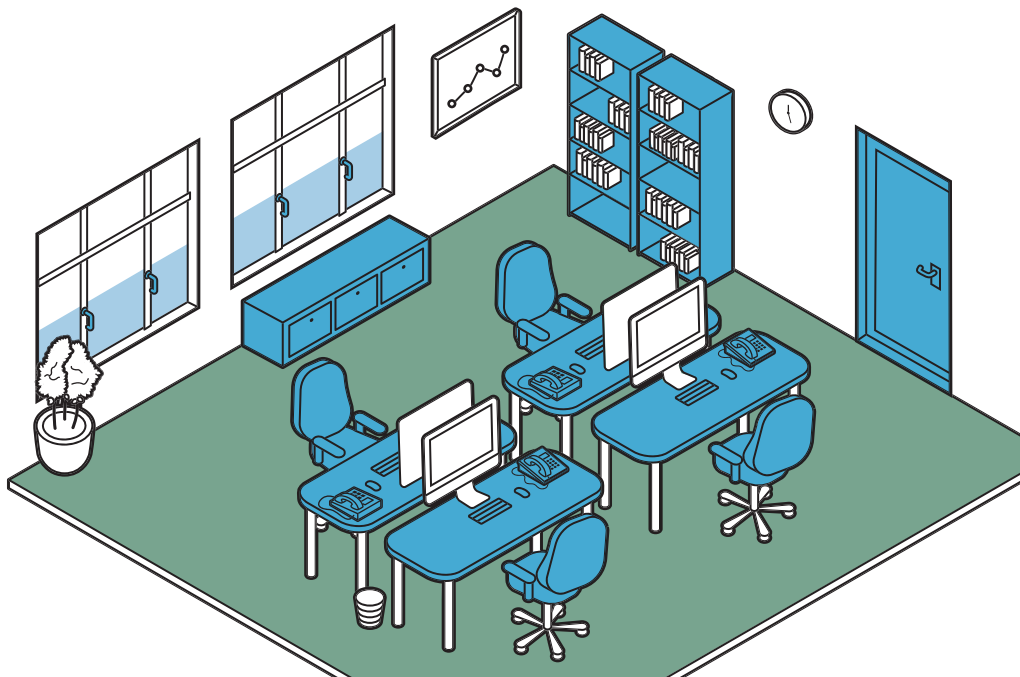


### After cleaning



Read the product information sheet and the safety instructions before using detergents or machines.

## SMALL OFFICE: HYGIENIC CLEANING



## CLEANING SCOPE

Product recommendation and schedule for superior cleaning results.

### Surfaces



CA 30 C Microfibre

Mon	Tue	Wed	Thu	Fri	Sat	Sun	as required

### Glass / mirrors / displays



CA 40 R Microfibre glass WVP 10 Bottle set

Mon	Tue	Wed	Thu	Fri	Sat	Sun	as required

### Hard floor manual



Dust mop ECO!Mop CA 50 C Wet mop

Mon	Tue	Wed	Thu	Fri	Sat	Sun	as required

### Hard floor mechanical



CA 50 C BR 30/4 BR 35/12

Mon	Tue	Wed	Thu	Fri	Sat	Sun	as required

### Before cleaning



### After cleaning



Read the product information sheet and the safety instructions before using detergents or machines.

## SMALL OFFICE: HYGIENIC CLEANING



## CLEANING SCOPE

Product recommendation and schedule for superior cleaning results.

### Surfaces



CA 30 C Microfibre

Mon	Tue	Wed	Thu	Fri	Sat	Sun	as required

### Glass / mirrors / displays



CA 40 R Microfibre glass WVP 10 Bottle set

Mon	Tue	Wed	Thu	Fri	Sat	Sun	as required

### Carpet spot cleaning



EB 30/1 Adv RM 769 Microfibre

Mon	Tue	Wed	Thu	Fri	Sat	Sun	as required

### Carpet vacuuming



T 10/1 Adv CV 38/2

Mon	Tue	Wed	Thu	Fri	Sat	Sun	as required

### Before cleaning



### After cleaning



Read the product information sheet and the safety instructions before using detergents or machines.