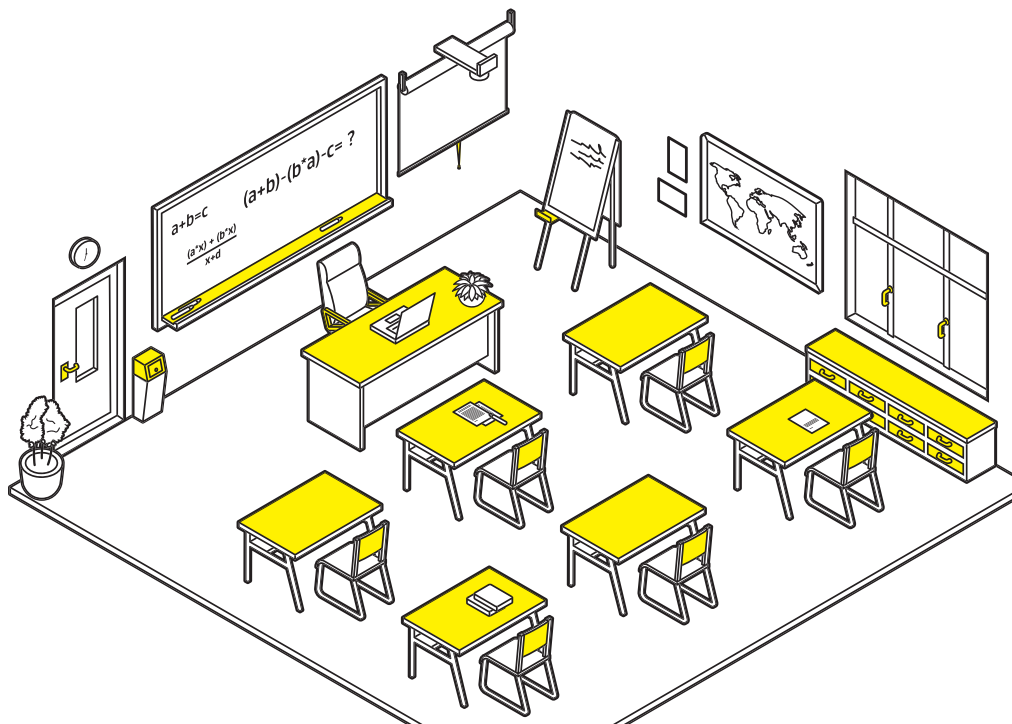


## CLASSROOMS: CRITICAL TOUCH POINT TREATMENT



## KEY TOUCH POINTS

Focus on points that are touched frequently by several people throughout the day.



Desks and sideboards



Arm rests of chairs



Waste bins



Door and window handles



Flipchart tray



Switches

## PRODUCT REFERENCE

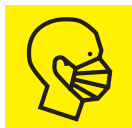


Microfibre



RM 735

### Before cleaning

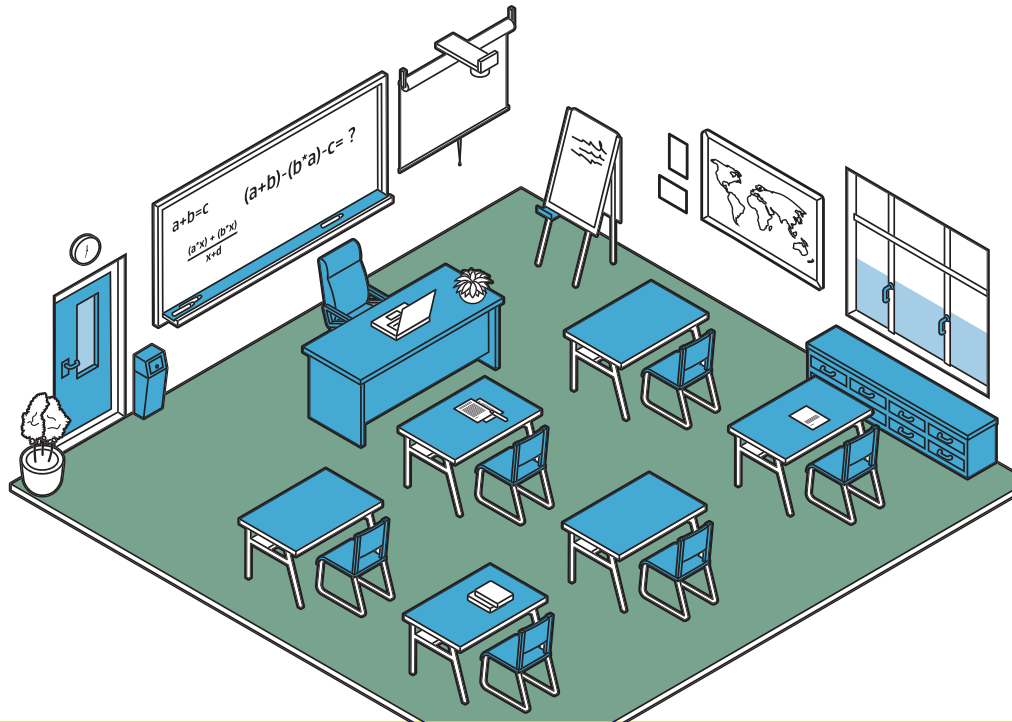


### After cleaning



Read the product information sheet and the safety instructions before using detergents or machines.

## CLASSROOMS: HYGIENIC CLEANING



## CLEANING SCOPE

Product recommendation and schedule for superior cleaning results.

### Surfaces



CA 30 C Microfibre

Mon	Tue	Wed	Thu	Fri	Sat	Sun	as required

### Glass / mirrors / displays



CA 40 R Microfibre glass WVP 10 Bottle set

Mon	Tue	Wed	Thu	Fri	Sat	Sun	as required

### Floor manual



Dust mop ECO!Mop CA 50 C Wet mop

Mon	Tue	Wed	Thu	Fri	Sat	Sun	as required

### Floor mechanical



T 10/1 Adv CA 50 C BR 30/4 BR 35/12

Mon	Tue	Wed	Thu	Fri	Sat	Sun	as required

### Before cleaning



### After cleaning

