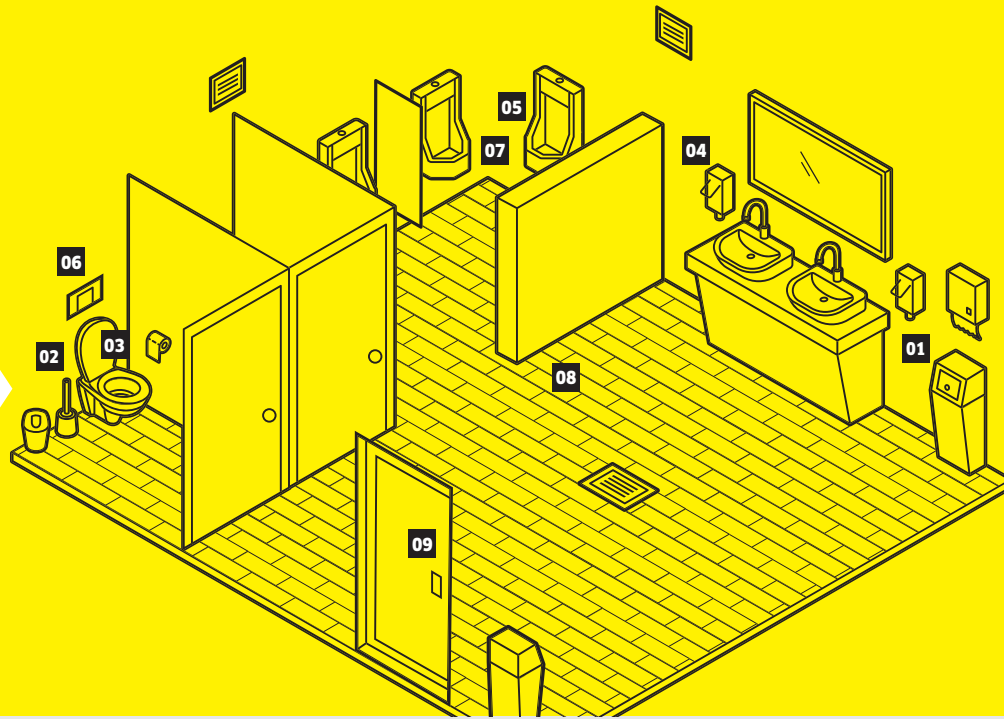


Workflow

WASHROOM



CLEANING DESCRIPTION

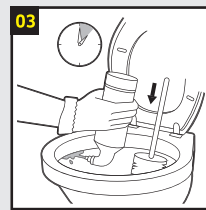
How to clean the area according to the workflow.



- Fill up dispenser
- Remove coarse dirt
- Dispose of waste



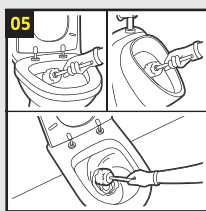
- Empty brush holder
- Remove residue in the bowl with the brush
- Flush toilet



- Apply cleaning agent
- Rub in cleaning agent with brush
- Place toilet brush in toilet bowl



- Clean furniture from top to bottom
- Wipe wall surfaces



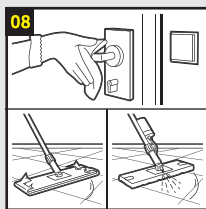
- Clean the inside of the toilet bowl and urinals with brush
- Rinse brush and put back in holder
- Close toilet lid



- Clean the flush handle, flush tank, lid (top and underside), seat (top and underside) with cleaning agent



- Clean the outside of the toilet bowl and urinals



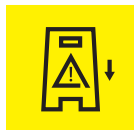
- Remove finger marks on doors and switches
- Wipe and collect dust
- Wipe floor wet



- Inspect visually the cleaned areas
- Switch off light
- Close the door

Before cleaning

After cleaning



Read the product information sheet and safety instructions before you use cleaning agents or machines.