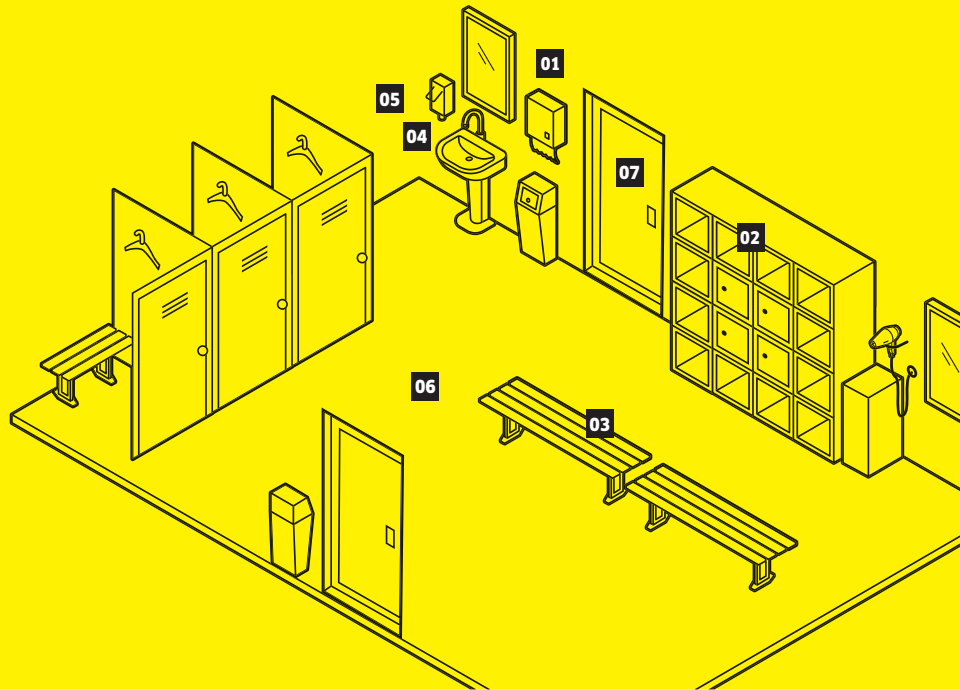


Workflow

CHANGING ROOM WITH HARD FLOOR

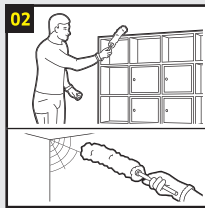


CLEANING DESCRIPTION

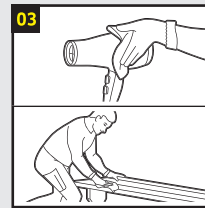
How to clean the area according to the workflow.



- Fill up dispenser
- Remove coarse dirt
- Dispose of waste



- Dust furniture
- Remove cobwebs



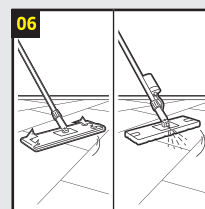
- Clean furniture from top to bottom



- Clean furniture from top to bottom



- Wipe splash areas
- Remove finger marks on doors and switches

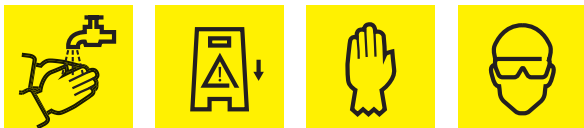


- Wipe and collect dust
- Wipe floor wet



- Inspect visually the cleaned areas
- Switch off light
- Close the door

Before cleaning



After cleaning

