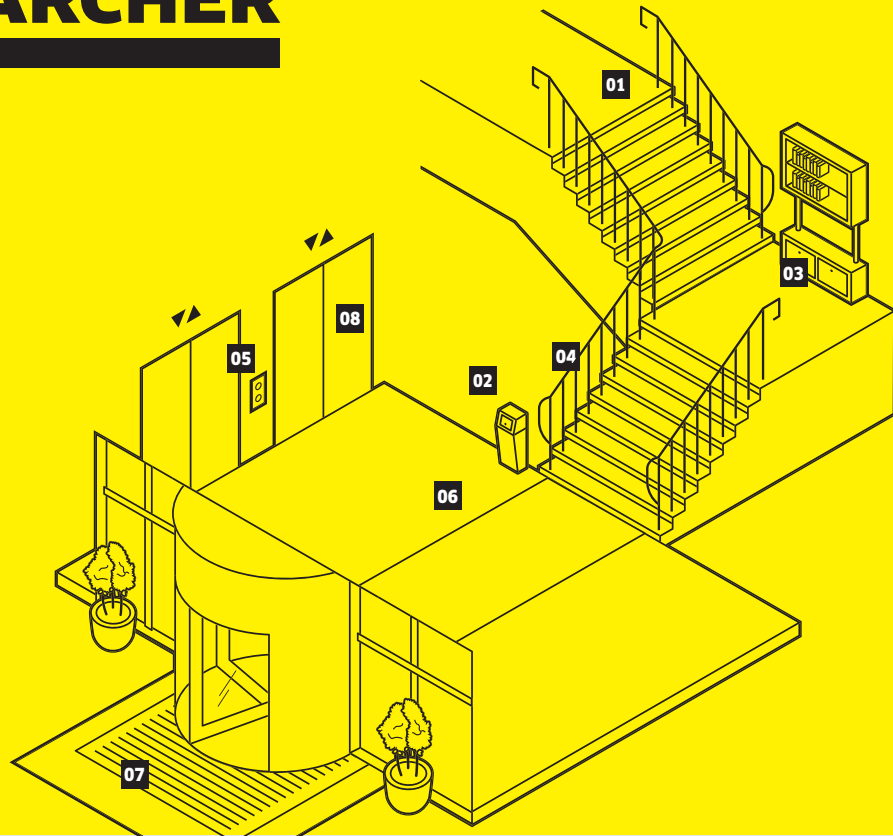


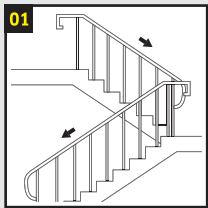
Workflow

STAIRWAY WITH HARD FLOOR

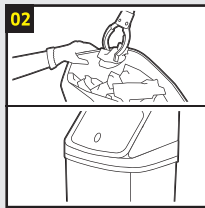


CLEANING DESCRIPTION

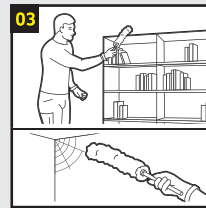
How to clean the area according to the workflow.



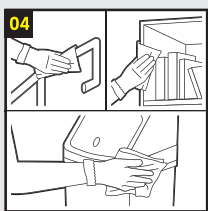
- Start cleaning on the top floor and clean as you move downwards (from landing to landing, in the direction of the entrance)



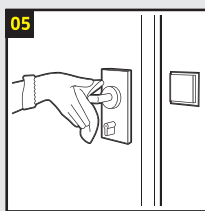
- Remove coarse dirt
- Dispose of waste



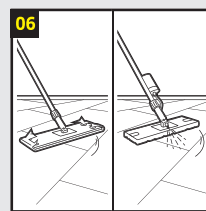
- Dust furniture
- Remove cobwebs



- Clean furniture from top to bottom



- Remove finger marks on doors and switches



- Wipe and collect dust
- Wipe floor wet

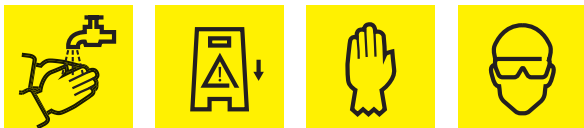


- Vacuum door mat, incl. mat recess, and put the mat back



- Inspect visually the cleaned areas
- Switch off light
- Close the door

Before cleaning



After cleaning



Read the product information sheet and safety instructions before you use cleaning agents or machines.