

# KÄRCHER

makes a difference



## LET KÄRCHER DO YOUR HOUSE WORK

Serahkan pekerjaan rumah Anda pada Kärcher

**2021/2022**

## We Are Here For You



### Cleaning Solutions for Over 80 Years

Since its beginning in 1935 the value-oriented family business Kärcher has developed into a worldwide brand, offering its customers three strong attributes: top performance, innovation and quality. Kärcher products have won more than 100 national and international prizes for exemplary design. In addition, more than 1,300 patents and utility models are evidence of the company's inventive spirit and passion for innovation. Today, Kärcher is the leading global provider of efficient, resource-saving cleaning systems, characterized by reliable, user-friendly products, and strong service. Kärcher opened its Indonesian subsidiary in 2014.

*Sejak dibuka di tahun 1935, Kärcher yang merupakan bisnis keluarga, yang berorientasi pada nilai-nilai, telah berkembang menjadi merek internasional yang menawarkan 3 atribut penting kepada pelanggannya: kinerja terbaik, inovasi dan kualitas. Produk-produk Kärcher telah memenangkan lebih dari 100 penghargaan nasional dan internasional untuk desain produk. Di samping itu, lebih dari 1.300 paten dan model utilitas merupakan bukti semangat inventif dan inovatif kami. Saat ini, Kärcher merupakan penyedia produk pembersih global yang efisien dan hemat sumber daya, dengan karakteristik mudah digunakan dan servis yang baik. Di tahun 2014 Kärcher membuka subsidiary di Indonesia.*



As for our commitment to the environment, we have been cleaning historical monuments and buildings for more than 30 years as part of our cultural sponsorship program. From Monument Nasional in Indonesia, to Mount Rushmore in United State and many others, we are happy to take on any challenge. We have made cleaning our business and at the same time, make our contribution towards preserving values for people worldwide.

*Atas komitmen kami terhadap lingkungan, kami telah membersihkan berbagai monumen dan bangunan bersejarah selama lebih dari 30 tahun sebagai bagian dari prgram sponsor kebudayaan kami. Dari Monumen Nasional di Indonesia hingga Mount Rushmore di Amerika Serikat dan banyak lainnya, kami senang menghadapi tiap tantangan.*

*Kebersihan telah menjadi bisnis kami dan disaat bersamaan, kami memberi kontribusi bagi kebudayaan nilai kemanusiaan secara global.*

**Kärcher makes a difference**

### Table of Contents

<b>High Pressure Cleaner</b> <i>Pembersih dengan Air Bertekanan Tinggi</i>	4	<b>Floor Cleaner</b> <i>Pembersih lantai</i>	12
<b>Wet &amp; Dry Vacuum Cleaner</b> <i>Pengisap kotoran basah &amp; kering</i>	6	<b>Submersible Dirty Water Pump</b> <i>Pompa Celup Air Kotor</i>	12
<b>Dry Vacuum Cleaner</b> <i>Pengisap kotoran kering</i>	8	<b>Hose Reel</b> <i>Selang Gulung</i>	12
<b>Carpet Cleaner</b> <i>Pembersih karpet</i>	10	<b>Home &amp; Garden Accessories</b> <i>Aksesoris Rumah &amp; Taman</i>	13
<b>Steam Cleaner &amp; Steam Vacuum Cleaner</b> <i>Membersihkan dengan Uap Panas</i>	10	<b>Kärcher Service</b> <i>Kärcher Service</i>	15



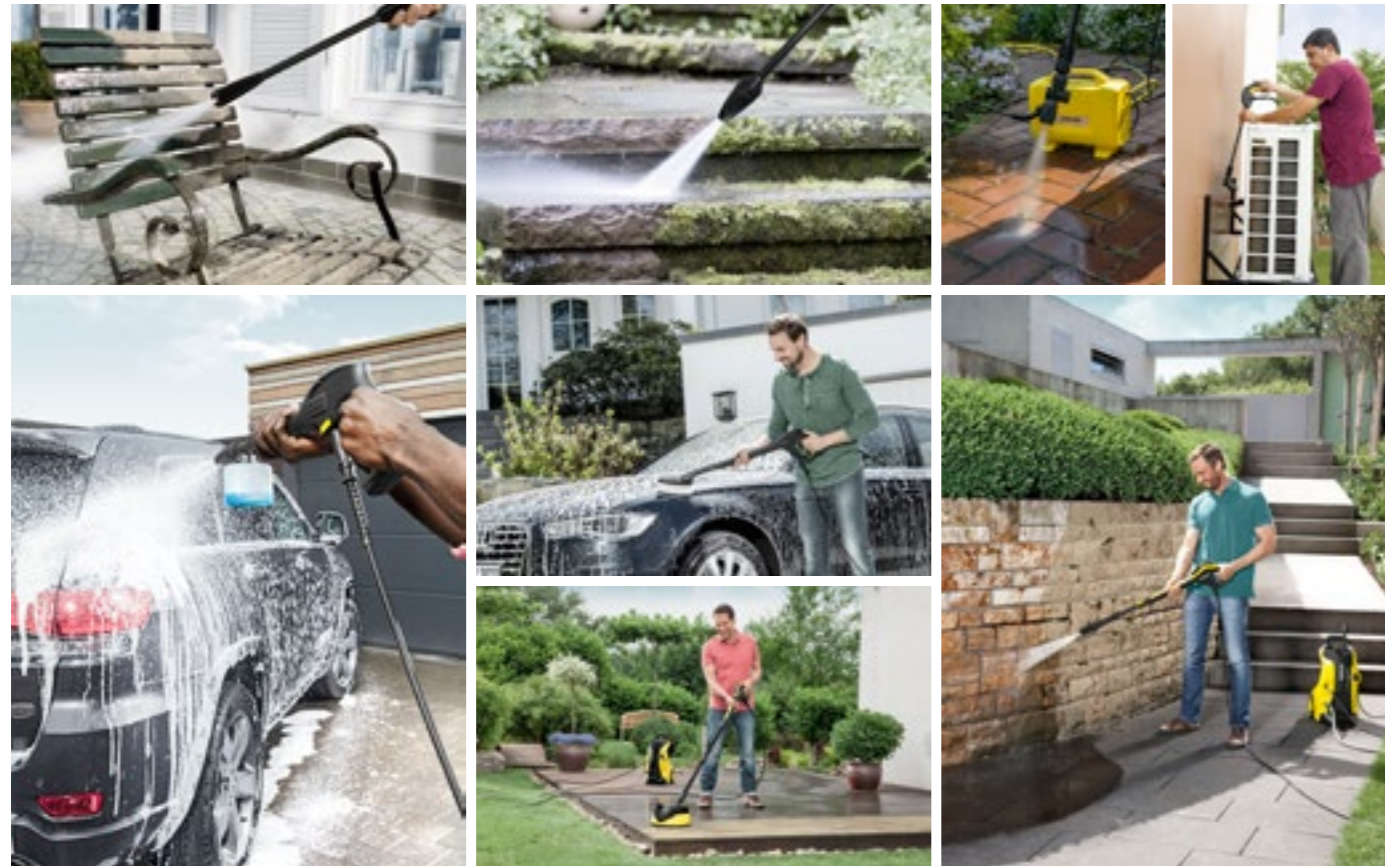
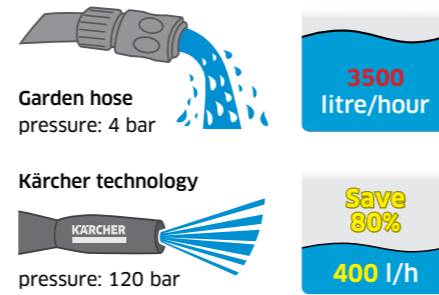
**Designed and engineered  
by Kärcher in Germany**

# High Pressure Cleaner

Whether it is tender care or powerful cleaning, Kärcher pressure cleaners offer the perfect solution for every outdoor cleaning task around your home. The compact units are reliable allies against smaller dirt around the house and garden. Simple and convenient, the units outshine conventional cleaning that relies on a sponge, brush & bucket.

Baik perawatan yang ringan ataupun pekerjaan berat, pembersih Kärcher bertekanan tinggi memberikan hasil sempurna untuk kebersihan sekitar rumah. Unit ringkas yang dapat diandalkan untuk membersihkan rumah dan taman. Mudah dan nyaman, menggantikan pekerjaan manual yang menggunakan spons, sikat & ember.

## Water Usage Comparison



Special Features		Product (order n.)	K 2 Universal Edition Car (1.600-104.0)	K 2.360 (1.601-686.0)	K 2 Power VPS (1.118-001.0)
<ul style="list-style-type: none"> <li>Integrated cable slot</li> <li>Convenient accessory storage</li> <li>Quick Connect System</li> </ul>		<b>Technical Data</b>			
Pressure (max.)	bar		90	110	100
Flow rate (max.)	l/h		300	360	360
Power (max.)	W		900	1400	1100
Hose length	m		6	6	7.5
Dimensions (LxWxH)	mm		182 x 280 x 390	328 x 258 x 661	352 x 170 x 287



Special Features		Product (order n.)	K 3 HR (1.599-261.0)	K 4 Compact (1.637-500.0)	K 4 Premium Power Control (1.324-130.0)
<ul style="list-style-type: none"> <li>Up to 10 m hose storage on reel</li> <li>2-lance storage on device</li> <li>Built-in detergent tank</li> </ul>		<b>Technical Data</b>			
Pressure (max.)	bar		120	130	130
Flow rate (max.)	l/h		360	420	420
Power (max.)	W		1600	1800	1800
Hose length	m		10	6	8
Dimensions (LxWxH)	mm		283 x 300 x 805	348 x 308 x 520	411 x 305 x 584



Special Features		Product (order n.)	K 1 (1.600-005.0)	K 1 Car (1.600-008.0)
<ul style="list-style-type: none"> <li>Robust &amp; energy efficient</li> <li>Cable hook</li> </ul>		<b>Technical Data</b>		
Pressure (max.)	bar		90	
Flow rate (max.)	l/h		300	
Power (max.)	W		850	
Hose length	m		3	
Dimensions (LxWxH)	mm		160 x 240 x 426	

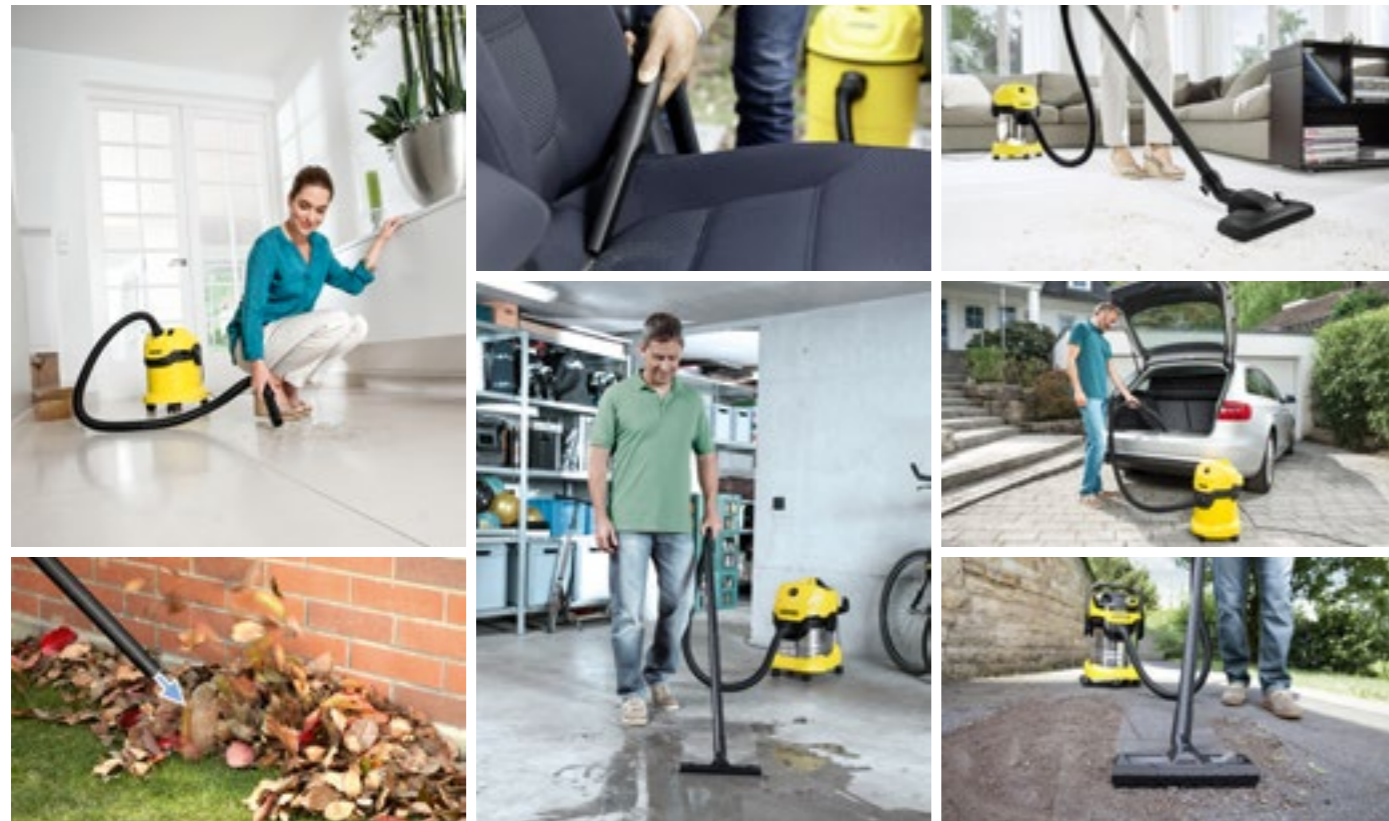


Special Features		Product (order n.)	K 5 (1.180-633.0)	K 5 Power Control (1.324-550.0)
<ul style="list-style-type: none"> <li>Long-life water-cooled motor</li> <li>Plug 'n' Clean detergent system</li> <li>Vario Power</li> </ul>		<b>Technical Data</b>		
Pressure (max.)	bar		145	145
Flow rate (max.)	l/h		500	500
Power (max.)	W		2100	2100
Hose length	m		8	10
Dimensions (LxWxH)	mm		349 x 426 x 878	402 x 306 x 588

# Wet & Dry Vacuum Cleaner

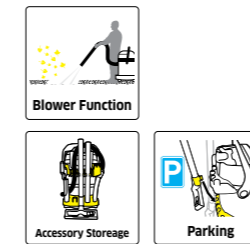
Whether dry or moist, coarse or fine dirt - it makes no difference to Kärcher multi-purpose vacuum cleaners. With lower power consumption and innovative new accessories & features, these versatile units ensure cleanliness without compromise. Kärcher provides the right solution for any need - both for occasional as well as intensive use.

Kering atau basah, butiran kasar atau kecil, tidak menjadi masalah bagi vakum pembersih multi fungsi buatan Kärcher. Dengan konsumsi listrik lebih rendah beserta perangkat aksesoris dan fitur inovatif yang baru, mesin pembersih serba guna ini membersihkan tanpa kompromi. Kärcher memberikan solusi terbaik untuk setiap kebutuhan sehari-hari maupun pekerjaan intensif.



- Special Features**
- Practical blower function
  - Compact design
  - Cable & accessory storage on device
  - Practical blower function
  - Stainless steel dust container, impact & corrosion resistant
  - 2 nozzles for all hard floors
  - Cable and accessory storage on device

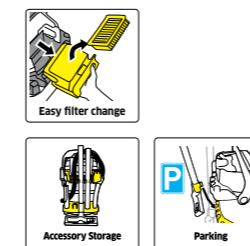
Product (order n.)		WD 1 Classic (1.098-322.0)	WD 1 S Classic (1.098-323.0)
<b>Technical Data</b>			
Power (max.)	W	1200	1300
Container	l	15 (plastic)	18 (stainless steel)
Cable length	m	5	5
Vacuum	mbar	180	200
Dimensions (LxWxH)	mm	330 x 351 x 461	399 x 399 x 519



## Special Features

- Single-part cartridge filter, without additional filter replacement
- Fleece filter bag; extremely tear-resistant & long lasting
- Practical blower function
- Parking + intermediate parking position
- Accessory storage
- "Pull & Push" locking system

Product (order n.)		WD 2 Plus V-12/4/18/C (1.628-009.0)	WD 3 S V-17/4/20 (1.628-135.0)
<b>Technical Data</b>			
Energy Use	W	1000	1000
Container capacity	l	12 (plastic)	17 (stainless steel)
Cable length	m	4	4
Vacuum	mbar	180	200
Dimensions (LxWxH)	mm	349 x 328 x 378	353 x 328 x 493



## Special Features

- Patented filter removal technology; quick & easy without contact with dirt
- Fleece filter bag; extremely tear-resistant & long lasting
- Parking + intermediate parking position
- Removable handle, enabling direct nozzles attachment to the hose
- Hose, cord & accessory storage
- "Pull & Push" locking system
- Filter cleaning function; quickly restoring full suction power
- Patented filter removal technology; quick & easy, no contact with dirt
- Fleece filter bag; extremely tear-resistant & long lasting
- Practical blower function
- Parking + intermediate parking position
- Removable handle, enabling direct nozzles attachment to the hose
- Hose, cord & accessory storage
- "Pull & Push" locking system

Product (order n.)		WD 4 S V-20/5/22 (1.628-250.0)	WD 5 S V-25/5/22 (1.628-350.0)
<b>Technical Data</b>			
Energy Use	W	1000	1800
Container capacity	l	20 (stainless steel)	25 (stainless steel)
Cable length	m	5	5
Vacuum	mbar	220	230
Dimensions (LxWxH)	mm	384 x 365 x 524	418 x 382 x 652

# Dry Vacuum Cleaner

Our appropriate dry vacuum cleaners are built for each use and for every demand. From the extremely compact VC to the thorough DS versions that even refresh air in the room and help allergy sufferer. Every product comes with HEPA filter (captures dust and very small particles), powerful yet efficient motor, and innovative design, makes them easier for storage.

Penyedot debu kering kami dibuat untuk tiap keperluan dan tuntutan. Dari versi VC yang sangat ringkas hingga versi DS yg total membersihkan bahkan udara di dalam ruangan dan dapat membantu penderita alergi. Tiap produk dilengkapi filter HEPA (menangkap debu dan partikel sangat kecil), motor yang kuat nan efisien dan desain yang inovatif sehingga memudahkan penyimpanan.

**HEPA FILTER**

**High-Efficiency Particulate Air (HEPA) Filter Degree of Separation**

Outstanding degree of separation. Retains even smallest aerosols and mite excrements.

HEPA 12 -> filters 99,9% of all particles >0,3 µm  
HEPA 13 -> filters 99,99% of all particles >0,3 µm  
(The exhaust air from the machine is cleaner than the air in the room; recommendable for allergy sufferers)

Graph showing HEPA filter efficiency for various particles. The x-axis is particle size / µm (log scale from 100 to 0.01), and the y-axis is Degree of separation (%) relating to the particle size.

HEPA 12 Filter: > 99.9%  
HEPA 13: > 99.99%  
HEPA 14 Filter: > 99.995%



## Special Features

- Bagless filter system with integrated filter cleaning
- Extensive range of accessories
- High efficiency HEPA filter

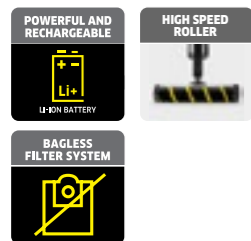
Product (order n.)		VC 5 Premium (1.349-200.0)
<b>Technical Data</b>		
Power Rating	W	500
Container	l	0.2
Operating radius	m	10
Noise level	db(A)	77
Dimensions (LxWxH)	mm	182 x 261 x 621



## Special Features

- True multi-cyclone technology-outstanding performance, no suction loss
- HEPA 12 filter - captures 99.5% of dust & particles
- Automatic cable rewind
- True multi-cyclone technology-outstanding performance, no suction loss
- HEPA 13 filter - captures 99.95% of dust & particles
- Automatic cable rewind

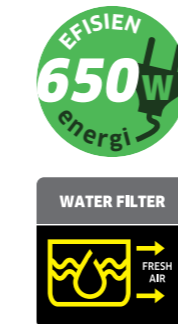
Product (order n.)		VC 3 (ERP) (1.198-123.0)	VC 3 Premium (ERP) (1.198-131.0)
<b>Technical Data</b>			
Power Rating	W		700
Container	l		0.9
Operating radius	m		7.5
Weight (without acc.)	kg		4.4
Dimensions (LxWxH)	mm		388 x 269 x 334



## Special Features

- Slimline design & ideal weight for effortless cleaning
- Brushless high-speed motor and large motorised floor nozzle
- Suitable for all kinds of floors, furnitures and vehicle indoors
- HEPA 12 filter (99.5%)
- Lightweight design for fatigue-free working
- For hard floors, upholstered furnitures, hard-to-reach areas
- High motor speed, suction power and motorised floor roller pick up all dirt
- HEPA 12 filter (99.5%)

Product (order n.)		VC 4i Cordless Plus (1.198-260.0)	VC 4s Cordless (1.198-291.0)
<b>Technical Data</b>			
Battery cap.   Voltage	Ah   V	2.5 (lithium)   18	2.5 (lithium)   18
Charg.   work. time	hrs.   mn.	3 - 5   12 - 60	3 - 5   12 - 60
Suction	Kpa	15	15
Noise level	db(A)	81	79
Dimensions (LxWxH)	mm	150 x 255 x 1060 (stick)	150 x 255 x 1060 (stick)



## Special Features

- Multi-stage filter system - for 99.9% clean exhaust air, suitable for allergy sufferers
- HEPA 12 filter - captures 99.5% of dust & particles
- Exceptionally easy; removable water filter for cleaning
- Parking position & accessory storage on machine
- Multi-stage filter system - for 99.9% clean exhaust air, suitable for allergy sufferers
- HEPA 13 filter - captures 99.95% of dust & particles
- Exceptionally easy; removable water filter for cleaning
- Parking position & accessory storage on machine

Product (order n.)		DS 6 (1.195-220.0)	DS 6 Premium (1.195-240.0)
<b>Technical Data</b>			
Power Rating	W	650	650
Container	l	2 (water filter)	2 (water filter)
Operating radius	m	10.2	11.2
Weight (without acc.)	kg	7.5	7.5
Dimensions (LxWxH)	mm	535 x 289 x 345	535 x 289 x 345

## Vacuum Cleaner with Water Filter | Penyedot debu dengan saringan air

The multi-stage filter system (water+HEPA filter) of DS 6 ensures that even microscopic dirt particles as small as 0.3 µm are extracted. This is ideal for families with young children or people with allergies. DS 6 relies on the natural power of water being swirled around at high speed. The dirt is piped through the swirling water, reliably filtered from the air and bound in the water. The result: exceptionally fresh, 99.9% clean exhaust air.

Sistem penyaringan berjenjang (filter air+HEPA) dari DS 6 menjamin bahkan partikel debu sekecil 0.3 mikrometer tersaring. Ideal untuk keluarga dengan anak-anak atau mereka yang memiliki alergi. DS 6 mengandalkan kekuatan alami air yang diilingkarkan dengan kecepatan tinggi. Kotoran disalurkan melalui air yang berputar, tersaring dari udara dan terperangkap di dalam air. Hasilnya: udara buangan yang sangat bersih (99.9%).



# Carpet Cleaner

Kärcher spray extraction cleaner cleans thoroughly and hygienically without long drying times. This easy-to-use device is ideal for regular fibre-deep cleaning of carpets, upholstery and other surfaces around the home. Spotless cleaning for healthier environment.

Spray extraction cleaner Kärcher membersihkan secara menyeluruh dan higienis tanpa pengeringan yang lama. Alat yang mudah digunakan ini ideal untuk pembersihan hingga-ke-serat sehari-hari pada karpet, lapisan perabotan dan permukaan lain di rumah. Pembersihan tanpa cela untuk lingkungan yang lebih sehat.



Product (order n.)		SE 6.100 (1.081-220.0)
<b>Special Features</b>		
<ul style="list-style-type: none"> <li>• Flat pleated filter; wet &amp; dry vacuuming without filter change</li> <li>• Parking position</li> <li>• Accessory storage</li> </ul>		
<b>Technical Data</b>		
Power (max.) turbine   pump	W	1400   40
Spray rate	l/min.	1
Water tank capacity fresh   dirty	l	4   4
Spray pressure	bar	1
Dimensions (LxWxH)	mm	422 x 320 x 465

# Steam Cleaner & Steam Vacuum Cleaner

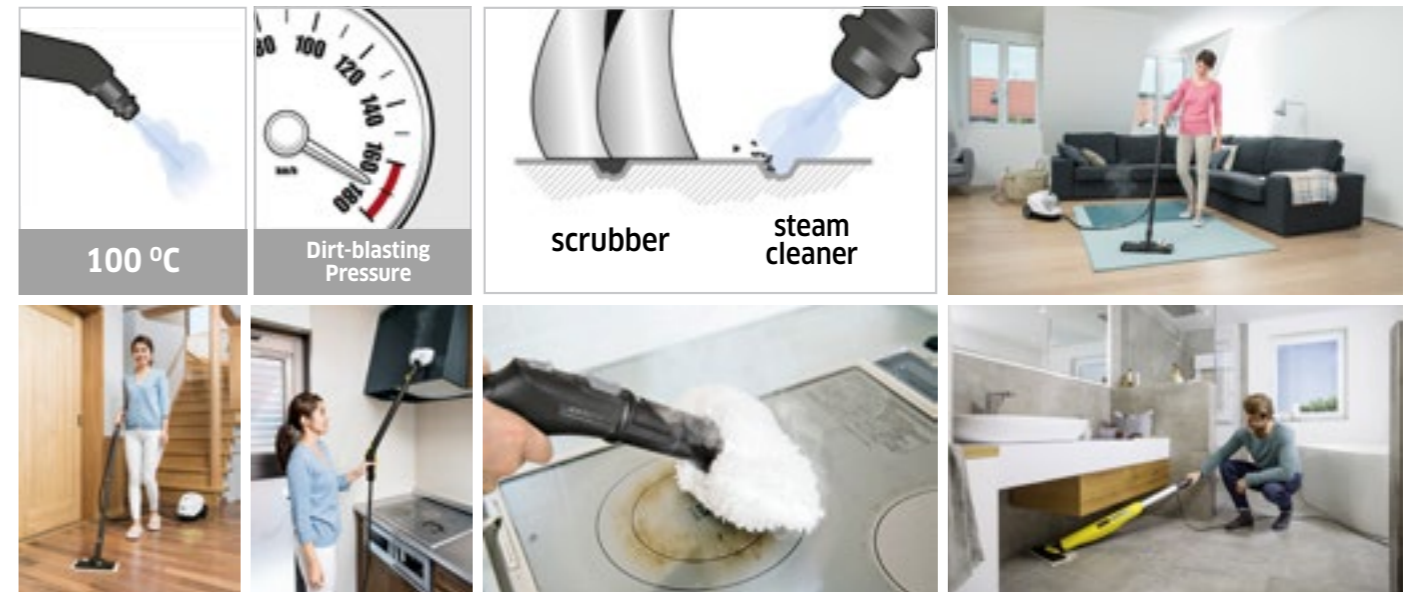
DEEP CLEANING WITHOUT CHEMICALS  
KILLS UP TO 99.999% OF CORONAVIRUS\* AND BACTERIA\*\*

Kärcher steam cleaners penetrate even the smallest pores. Microscopic steam particles dissolve stubborn dirt and prevent bacterial and microbial growth. Since it does not involve the use of cleaning agents, no allergenic residues can form on cleaned surfaces. Extremely versatile devices that clean without chemicals.

Pembersih uap panas dari Kärcher menembus hingga ke pori terkecil. Partikel uap panasnya melarutkan kotoran membandel serta mencegah berkembang biaknya bakteri dan mikroba. Karena tidak menggunakan cairan kimia, tidak ada residu alergen yang tertinggal pada permukaan. Alat sangat serbaguna yang membersihkan tanpa bahan kimia.



Product (order n.)		SC 2 EasyFix (1.512-055.0)	SC 2 Deluxe EasyFix Premium (1.513-250.0)
<b>Special Features</b>			
<ul style="list-style-type: none"> <li>• Light, compact device</li> <li>• With floor cleaning set EasyFix</li> <li>• LED indicator for operating modes</li> <li>• Lightweight, space-saving compact design</li> <li>• Cable and accessories storage on device</li> </ul>			
<b>Technical Data</b>			
Power (max.)	W	1500	1500
Area performance	m <sup>2</sup>	75 (approx.)	75 (approx.)
Tank capacity (boiler)	l	1	1
Heat-up time	min.	6.5	6.5
Steam pressure (max.)	bar	3.2	3.2



Product (order n.)		SC 3 EasyFix Premium (1.513-160.0)	SC 3 Upright EasyFix (1.513-300.0)
<b>Special Features</b>			
<ul style="list-style-type: none"> <li>• Floor cleaning set EasyFix</li> <li>• Two-stage steam flow control</li> <li>• Accessory storage and parking position</li> <li>• Light, compact device</li> <li>• With floor cleaning set EasyFix</li> <li>• Easy handling of the carpet glider</li> </ul>			
<b>Technical Data</b>			
Power (max.)	W	1900	1600
Area performance	m <sup>2</sup>	75 (approx.)	60 (approx.)
Tank capacity	l	1	0.5
Heat-up time	min.	0.5	0.5
Steam pressure (max.)	bar	3.5	3.5

## 3-in-1: Steaming, Vacuuming and Drying 3-in-1: Pembersih Uap, Penyedot Debu dan Pengering

Combining the advantages of steam cleaners with the strengths of dry vacuum cleaners. It can vacuum crumbs from the floor whilst also wetting, wiping and then drying the floor, all in a single, convenient process: quickly, easily and without chemicals.

Menggabungkan kelebihan pembersih uap, dengan kekuatan penyedot debu. Menyedot remah dari lantai selagi membasahi, mengepel dan kemudian mengeringkannya, semua dalam satu proses yang nyaman: dengan cepat, mudah dan tanpa bahan kimia.



Product (order n.)		SV 7 (1.439-420.0)
<b>Special Features</b>		
<ul style="list-style-type: none"> <li>• 4-level suction power control</li> <li>• 5-level steam volume control</li> <li>• Non-stop steam</li> <li>• Cable storage compartment</li> <li>• Child safety lock</li> </ul>		
<b>Technical Data</b>		
Power (max.)	W	2200
Tank capacity	l	0.45 (boiler)   0.5 (refill)   1.2 (water filter)
Steam pressure	m	4 (max.)
Vacuum	mbar	210
Dimensions (LxWxH)	mm	515 x 336 x 340



## Floor Cleaner

The Kärcher FC 5 is the perfect solution for fast and easy hard floor cleaning. Its innovative 2-in-1 function means there is no need for the hassle of vacuuming before wiping. The combination of wiping and vacuuming in one step means that the floor cleaner picks up damp and dry dirt at the same time. It doesn't matter whether it's on wood, stone or plastic - the FC 5 shines with exceptional cleaning results on all standard hard floors.

Kärcher FC 5 adalah solusi yang sempurna untuk pembersihan lantai yang cepat dan mudah. Fungsi 2-in-1 yang inovatif berarti tak perlu repot menyedot kotoran sebelum menyeka. Kombinasi menyeka dan menyedot sekaligus berarti bahwa pembersih lantai ini mengambil kotoran lembab maupun kering di saat bersamaan. Tak masalah apakah permukaan kayu, batu atau plastik - FC 5 unggul dengan hasil pembersihan yang istimewa pada semua lantai umumnya.



**WATER SAVING**  
**85%**

**CLEANING PERFORMANCE**  
**+20%**

**TIME SAVING**  
**Up to -50%**

**EFISIEN**  
**460W energi**

Product (order n.)		FC 5 Premium (1.055-460.0)
<b>Special Features</b>		
<ul style="list-style-type: none"> <li>Innovative self-cleaning function</li> <li>Hygienic Twin-Tank System</li> <li>Practical parking station for storage</li> </ul>		
<b>Technical Data</b>		
Power rating	W	460
Cleaning performance	m <sup>2</sup>	60 (approx.)
Water tank capacity (Fresh   Dirty)	ml	400   200
Drying time	min.	2
Dimensions (LxWxH)	mm	320 × 270 × 1220

## Garden Utilities

### Compact, Robust and Powerful Submersible Pump

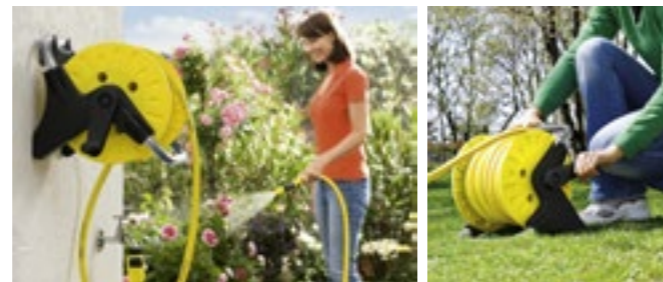


**Special Features**

- Possibility to fix the float switch

Product (order n.)		SP 3 Dirt (1.645-502.0)
<b>Technical Data</b>		
Motor rating	W	350
Flow rate (max.)	l/h	7000
Delivery height/pressure	m/bar	6/0.6
Immersion depth	m	7
Temperature	°C	35
<b>Equipments</b>		
<ul style="list-style-type: none"> <li>Quick connect</li> <li>Hose connection piece, 1 1/4"</li> </ul>		

### Innovative Hose Reel



**Special Features**

- Hose carrier with 15 m 1/2" standard hose, spray nozzle 2.645-053
- Easy to carry
- Product designation with scroll label
- Ready to use

Product (order n.)		HR 25 (2.645-041.0)
<b>Technical Data</b>		
Hose length	m	15
Hose diameter	in.	0.5
Connector	pc.	4
Dimensions (LxWxH)	mm	300x300x300
<b>Equipments</b>		
<ul style="list-style-type: none"> <li>G3/4-tap connection</li> <li>Hose Coupling, 3 pcs.</li> <li>Hose Coupling, Aqua Stop</li> <li>Spray Nozzle</li> </ul>		

## Home & Garden Accessories

Accessories for High Pressure Cleaners		Order Number	Description	K1	K 1 Car	K 2 Uni. Ed. Car	K 2.360	K 2 Power VPS	K 3 HR	K 4 Compact	K 4 Pr. Pow. Con.	K 5	K 5 Power Con.
1		2.643-912.0	Upgrade set high-pressure hose 4 m, gun and quick connect adapter	□	□	□	□	□	□	□	□	□	□
2		2.643-910.0	A set with 7.5 m hose, high-pressure gun and Quick Connect adapter.			□	□	□	□	□	□	□	□
3		2.643-909.0	Upgrade set high-pressure hose 12 m, gun and quick connect adapter			□	□	□	□	□	□	□	□
4		2.641-721.0	Replacement hose with Quick Connect			□	□	□	□	□	□	□	□
5		2.642-724.0	Adjustable pressure control spray lance			■	■	□	■				
6		2.642-725.0	Adjustable pressure control spray lance							■	■	■	■
7		2.642-727.0	Powerful rotary nozzle, ideal for mossy or weathered surfaces, stubborn dirt	□	■	■	■	□	■				
8		2.642-728.0	Powerful rotary nozzle, ideal for mossy or weathered surfaces, stubborn dirt							■	■	■	■
9		2.643-254.0	Adjustable 360° joint is ideal to clean confined, hard-to-reach spaces			□	□	■	□	□	□	□	□
10		2.643-150.0	Powerful foam application	□	■	■	□	■	■	□	□	□	□
11		2.643-147.0	Powerful foam application	□	□	□	□	□	□	□	□	□	□
12		2.643-144.0	Quick-change detergent application. Change between different detergents with 1-click.	□	□	□	□	□	□	□	□	□	□
13		2.644-084.0	For splash-free cleaning of large surfaces. with adjustable nozzle length							□	□	□	□
14		2.641-710.0	10 m robust DN 8 hose, excellent durability.							□	□	□	□
15		2.643-101.0	Allows water to be drawn from alternative sources			□	□	□	□	□	□	□	□
16		2.642-794.0	Protects pressure washer pumps against dirt carried by water	□	□	□	□	□	□	□	□	□	□
17		2.637-729.0	For effective cleaning and removal of blockages in pipes, drains, downpipes & toilets			□	□	□	□	□	□	□	□

Accessories for Dry Vacuum Cleaners and Vacuum Cleaners with Water Filter		Order Number	Description	VC 3 (ERP)	VC 3 Pr. (ERP)	VC 4i Cor. Plus	VC 4s Cordless	VC 5 Premium	DS 6	DS 6 Premium
1		2.863-238.0	HEPA 13 high-performance filter for VC 3	□	■					
2		9.754-011.0	Inlet filter ASM replacement	■	■					
3		2.863-239.0	Reliably filters fine dust, for VC 5					■		
4		2.863-240.0	Safely and reliably filters the finest dirt, such as pollen and allergy-triggering particles.					■		
5		2.860-273.0	Special (EN 1822:1998)						□	■
6		6.414-631.0	Washable intermediate filter, retains airborne particles from the condensed humid air						■	■
7		2.903-001.0	Ideal for removing pet hair. Working width: 160 mm	□	□			□	□	□
8		2.863-302.0	Gentle cleaning on delicate hard floors such as parquet and laminate.						□	□
9		4.130-177.0	For intensive and thorough cleaning. Ideal for high-pile carpets and vacuuming pet hair.	□	□			□	□	□
10		6.295-873.0	Liquid defoaming agent.					■	■	
11		2.863-290.0	Hygienic deep-cleaning for beds, mattresses, pillows and hard-to-reach grooves around beds			□	□			
12		9.754-532.0	Replacement brush for VC 4is / VC 4i			■	■			

□ Optional Accessories

■ Included equipment

Accessories for Wet & Dry Vacuum Cleaners and Spray Extractor Cleaner		Order Number	Description	WD 1 Classic	WD 1 S Classic	WD 2 CFK	WD 3 Premium	WD 4 Premium	WD 5 Premium	SE 6.100
1		2.863-005.0	For wet and dry vacuuming without filter replacement					■	■	
2		2.863-006.0	Extremely tear resistant, high degree of dust retention.					□	□	
3		2.863-014.0	Paper filter bag with excellent filter capacity and high tear resistance	□	□					
4		2.863-015.0	Suitable for dry use without filter replacement	■	■					
5		2.863-145.0	For quick and easy cleaning of car seats, carpeted surfaces, boot and foot well	□	□	□	□	□	□	
6		2.863-146.0	For easy removing dried-on dirt	□	□	□	□	□	□	
7		2.863-147.0	For gentle cleaning of sensitive car interior surfaces	□	□	□	□	□	□	
8		2.863-148.0	Suitable for use in hard-to-reach places such as high ceilings.				□	□	□	
9		6.904-322.0	Paper filter bag with excellent filter capacity and high tear resistance.			□				
10		6.904-143.0	Paper filter bag with excellent filter capacity and high tear resistance.							□
11		6.959-130.0	Paper filter bag with excellent filter capacity and high tear resistance.				□			
12		6.414-552.0	Suitable for dry vacuuming without filter replacement.			■	■			
13		6.414-498.0	For wet and dry vacuuming without filter replacement							■
14		6.295-771.0	Liquid detergent with quick dry formula for interim cleaning.							□

Accessories for Steam Cleaners Steam Vacuum Cleaner and Floor Cleaner		Order Number	Description	SC 2 EasyFix	SC 3 EasyFix Premium	SC 2 Del. Eas. Prem.	SC 3 Upright EasyFix	FC 5 Premium
1		2.863-259.0	For more effective loosening and absorption of dirt on flooring.	□	□	□	□	
2		2.863-018.0	Replacement cartridge for steam cleaner			■	■	
3		2.055-006.0	For gentle wet cleaning and care for all hard floors. Lint-free, absorbent and hard-wearing.					■
4		6.295-944.0	Liquid cleaner for all hard floors. With moisture protection and lemon scent					□

Garden Watering System		Order Number	Description
1		2.645-194.0	With Aqua Stop, prevents splashing during disconnection
2		2.645-196.0	With Aqua Stop, prevents splashing during disconnection
3		2.645-051.0	Spraying pattern continuously adjustable from hard jet to cone jet & shower
4		2.645-265.0	Spraying pattern continuously adjustable from hard jet to cone jet
5		2.645-006.0	G 3/4 tap adapter with G 1/2 reducer
6		2.645-264.0	Adjustable spray pattern from hard to soft

□ Optional Accessories ■ Included equipment

## Kärcher Service

Our skilled service team provide personalised support over the entire service life of your Kärcher machine. Wherever you need us, we or one of our service partners will be there to assist you on-site.

*Tim ahli kami menghadirkan dukungan secara personal selama masa penggunaan mesin Kärcher Anda. Dimana Anda membutuhkan, kami atau rekan servis kami akan hadir untuk membantu Anda.*



We offer a fast, efficient, top-quality repair service. Our aim is to provide the fastest possible service to your utmost satisfaction. Customer service really can be that simple and inspired.

*Kami menawarkan servis perbaikan yang cepat, efisien dengan kualitas terbaik. Tujuan kami adalah menyediakan pelayanan secepat mungkin untuk kepuasan Anda. Pelayanan kami begitu mudah dan menginspirasi.*

Our work is not over when a perfect product delivered to our customers. When our customers shine - we shine. This means working in partnership with our customers and helping with problems - at any time and with a comprehensive customer service. You can reach us at our hotline **+62 888 9005746** or review our service options at [www.kaercher.com/id/services](http://www.kaercher.com/id/services).

*Pekerjaan kami belum selesai ketika produk yang baik diterima oleh pelanggan. Ketika pelanggan bersinar - begitu juga kami. Ini berarti menjadi rekan dengan pelanggan dan membantu menghadapi masalah - setiap saat dengan pelayanan yang memahami pelanggan. Anda dapat menghubungi kami di nomor hotline **+62 888 9005746** atau mengunjungi laman servis kami di [www.kaercher.com/id/services](http://www.kaercher.com/id/services).*

### Authorized Kärcher Service Indonesia



**SUMATERA UTARA**  
**PT Faedah Teknik**  
 Medan  
 ☎ +62 61 4568 886  
 ✉ faedahteknik@gmail.com

**KEPULAUAN RIAU**  
**PT Han-Indo Millenium**  
 Batam  
 ☎ +62 778 7496 688  
 ✉ sales@han-indo.com

**BANTEN**  
**Kärcher Center Indonesia**  
 Pagedangan, Tangerang  
 ☎ +62 21 8065 7600  
 ✉ cs@kaercherindonesia.com

**PT Berlian Sejahtera Teknik**  
 Tangerang Selatan  
 ☎ +62 21 5315 2793  
 ✉ marketing@bumibangun.com

**PT Enera Teknika Utama**  
 Bintaro, Tangerang  
 ☎ +62 21 2931 4687  
 ✉ sales.enera@gmail.com

**PT Kawan Baru Tehnik**  
 Cilegon  
 ☎ +62 254 375765  
 +62 254 387163  
 ✉ info@kawanbarutehnik.com

**DKI JAKARTA**  
**PT Mitra Cipta Hardi Elektrindo**  
 Jakarta Pusat  
 ☎ +62 21 6220 0101 (direct)  
 +62 6121 212 (hunting)  
 ✉ sales.kaercher@mitra-pt.co.id

**PT Karya Inti Mentari**  
 Lindeteves Trade Center (LTC) Lt. GF 1  
 ☎ +62 21 623 20717  
 ✉ ptkim.18@gmail.com

**JAWA BARAT**  
**KÄRCHER STORE UAP AIR**  
 Bandung  
 ☎ +62 22 8588 0101  
 +62 22 8588 0102  
 +62 22 8588 0103  
 ✉ pt\_uapair@yahoo.co.id

**PT Kalingga Tataraya**  
 Bekasi  
 ☎ +62 21 8951 0100  
 ✉ sales@tataraya.com

**KÄRCHER STORE ORIENTAMA**  
**MAKMUR ABADI**  
 Bekasi  
 ☎ +62 21 6586 7268  
 ✉ kaercherstore.cikarang@teknikmart.com

**DI YOGYAKARTA**  
**PT Bangunan Jaya Mandiri**  
**Qhome Service Center**  
 Yogyakarta  
 ☎ +62 274 4932 288

**SINERGI SOLUSI SAMPURNA**  
**(Service Point)**  
 Banguntapan, Yogyakarta  
 ☎ +62 878 127 40018 (hotline)  
 +62 87 899 699 888 (hotline)  
 ✉ www.KaercherStoreSurabaya.com

**JAWA TENGAH**  
**PT Bintang Wistar Kencana**  
 Semarang  
 ☎ +62 24 8640 2989  
 ✉ bwk\_smg@bintangwistar.com

**SINERGI SOLUSI SAMPURNA**  
**(Service Point)**  
 Mlati Lor, Kudus  
 ☎ +62 895 4234 67557 (hotline)  
 +62 819 2621 111 (hotline)  
 ✉ www.KaercherStoreSurabaya.com

**JAWA TIMUR**  
**KÄRCHER STORE**  
**SINERGI SOLUSI SAMPURNA**  
 Surabaya  
 ☎ +62 87 899 699 111  
 ✉ www.KaercherStoreSurabaya.com

**KALIMANTAN TIMUR**  
**PT Bumi Bangun Perkasa**  
 Balikpapan  
 ☎ +62 542 7571 079  
 +62 542 7571 080  
 ✉ marketing@bumibangun.com

**BALI**  
**Kärcher Store Altek Dewata**  
 Denpasar  
 ☎ +62 361 467610  
 ✉ altekdeiwata@ud-nasional.com

*Kami terus memperluas jaringan purna jual kami, silahkan kunjungi [www.kaercher.com/id](http://www.kaercher.com/id) untuk informasi jaringan purna jual terkini.*





Please contact us for more information:

**KÄRCHER CENTER INDONESIA**

Foresta Business Loft 3 Unit 8 & 9  
Jl. Boulevard Raya, Lengkong Kulon  
Pagedangan, Tangerang 15850

☎ +62 21 8065 7600

✉ cs@kaercherindonesia.com

[www.Kaercher.com/id](http://www.Kaercher.com/id)

☎ 0800 140 1551

☎ 0888 900 5746

✉ info@id.kaercher.com

f Kaercher Indonesia

📷 Kaercher.id

Dealer info: