



KÄRCHER

ZERO FORCE. FULL POWER.

Our new EASY!Force HD trigger gun

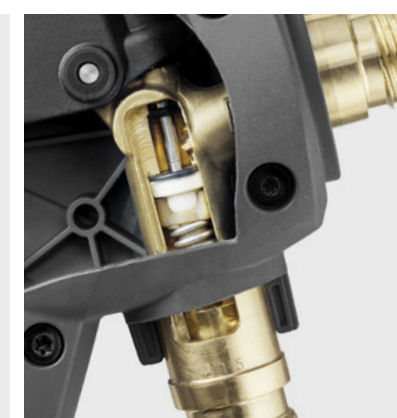
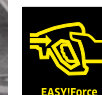
PROFESSIONAL | HIGH-PRESSURE CLEANING



YOU HAVE THE POWER!

Only one thing can come between you and your task: our EASY!Force HD trigger gun. It gives you the power to use high pressure with ease. The revolutionary operating concept of the EASY!Force trigger gun uses the recoil force of the high-pressure jet and reduces the holding force for the trigger to zero. Absolutely zero. Designed for more effortless, ergonomic and stress-free use. Try our EASY!Force trigger gun – you will not want to put it down.

IT HAS NEVER BEEN SO EASY TO CONTROL PRESSURE.



Experience the new dimension of ergonomics in high-pressure cleaning: with the new EASY!Force HD trigger gun, you need zero holding force and can clean effortlessly with less stress.

A question of ergonomics. Working with high-pressure cleaners is physically demanding. That is why ergonomics are important. Constantly holding the trigger of conventional HD trigger guns soon leads to tiredness, painful hands and a cramped working posture. Extensive cleaning is difficult without taking frequent breaks or even changing operators. Our EASY!Force technology changes this once and for all. No more holding force. It has never been so easy to clean with high pressure.

Full ceramic valve for a longer lifetime. When high-pressure guns fail, this is largely due to faulty valves damaged by particles. Our EASY!Force also puts an end to this: the valve consists of a ceramic ball with ceramic sealing seat that is resistant to any particles liable to cause potential damage. And this gives it a lifetime 5 times longer than trigger guns with conventional valve.

Intuitive for safe working. The trigger safety of the new EASY!Force trigger gun prevents unintentional operation and offers maximum safety during use – without compromising on ease of use. You only need to press the trigger once to release the high-pressure jet – intuitive and simple. The EASY!Force trigger gun remains open as long as the trigger is pressed. When you release the trigger, the trigger gun immediately switches off.

COMFORTABLE IN ANY SITUATION

We take care of the ergonomics so that you are comfortable in any situation. Our EASY!Force HD trigger gun offers optimal ergonomics for ease of use in any working position. In certain situations, in particular when working overhead or at different working angles, an extra handle can be used.



Getting a handle on your tasks.

An optional handle for the spray lance of our new EASY!Lock generation makes work easier by allowing you to adjust your posture to suit the particular task. Regularly changing your posture allows you to work longer and in a more relaxed way.

The extra handle can be fixed on the spray lance. The handle can be adjusted to suit the height of the operator and ideal working angle. This is quick and convenient with a simple

adjusting screw. The ergonomic design of the handle offers 2 additional gripping zones, whether you are right or left-handed. Thanks to the 360° rotatable spray lance, the extra handle can simply be turned whilst working for greater flexibility.

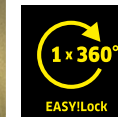
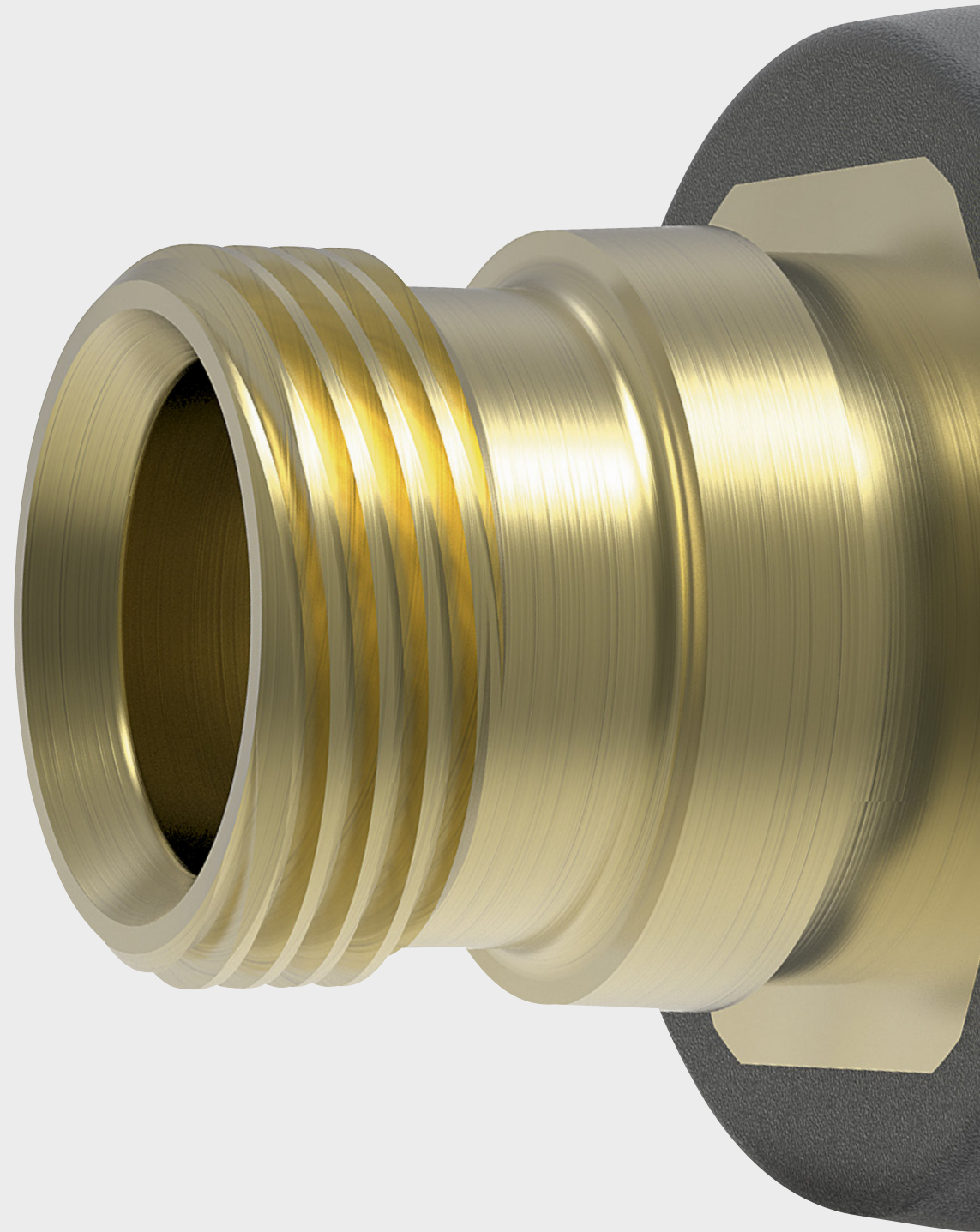
QUICK AND EASY CONNECTION

With our patented EASY!Lock quick locks, connection is quick and easy. Unbelievably 5 times faster compared with conventional screw connections. Our EASY!Lock quick lock is just as durable and robust. At least.

Ready quicker – finished quicker. Until now, setting up a high-pressure cleaner was very time-consuming. It involved connecting or disconnecting different interfaces. And the same was true when changing accessories. But that's a thing of the past. Our EASY!Lock system combines the advantages of a quick coupling with those of a screw connection. And this is a time saving of about 80%. Time needed for the actual work. Or for other important things.

Unique, quick, safe and robust. Nothing is safer, more reliable and long-lasting than a screw connection. Nothing is as time-saving as a quick lock. But one thing is as good as the two combined: our EASY!Lock is as strong as a conventional screw connection and as flexible as a quick lock. The thread is locked via a cone. A simple 360° turn is all it takes to connect all accessories from high-pressure cleaners to nozzles – via a multiple thread with insertion aid. Quick and safe. Time and time again.

Progress is this easy. With our innovative EASY!Lock system, weight is not an issue – it weighs no more than conventional screw connections. A small improvement with a big effect – the nozzle seal on the spray lance. This now sits radially directly in front of the retaining thread, which makes the seal far more durable and captive.



EVERYTHING IS COMPATIBLE.

EVERY- THING IS EASY.

Our EASY!Lock System is the start of better cleaning, not the end of your accessories. Specially developed adaptors enable all machines and accessories with metric threads (M22 × 1.5) to be used with accessories with EASY!Lock connection. And we have made it easy to choose the right adaptor with matching connections. Every adapter has a two-colour plastic cover with embossed number. The anthracite grey connection is the new EASY!Lock connection; the black connection is for a conventional metric thread.

Embossed number

Every adaptor has its own number. Clear and unmistakable

EASY!Lock connection

Quadruple trapezoidal thread with conical lock

Thread M22 × 1.5

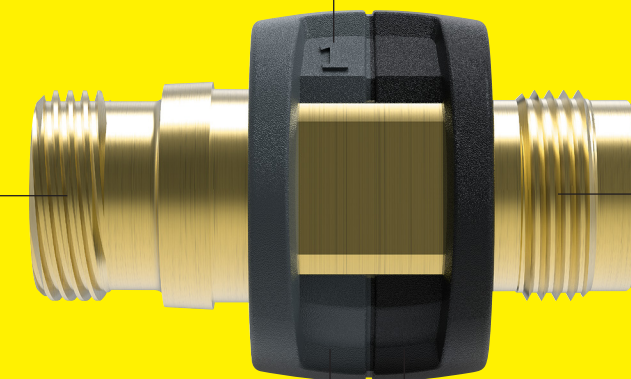
Metric thread for accessories without EASY!Lock

Anthracite grey = EASY!Lock

Colour coding for EASY!Lock connection

Black = Thread M22 × 1.5

Colour coding for conventional threaded connection



WHAT PERFECT CONNECTIONS LOOK LIKE

In order to cover the various interfaces, from the high-pressure cleaner to the nozzle, as well as forward and backward compatibility, a total of 8 different adaptors are available. This ensures that all existing machines

and accessories can continue to be used together with the new machines and accessories with EASY!Lock connections. Listed below are all adaptors with their respective application.*

1			EASY!Lock – M 22 × 1.5 Adaptor for connecting high-pressure hoses with EASY!Lock and high-pressure hoses with M 22 × 1.5 connection.	Order no. 4.111-029.0
2			EASY!Lock – M 22 × 1.5 Adaptor for connecting high-pressure cleaners/HD trigger guns with M 22 × 1.5 connection and high-pressure hoses with EASY!Lock.	Order no. 4.111-030.0
3			EASY!Lock – M 22 × 1.5 Adaptor for connecting HD trigger guns with M 22 × 1.5 and spray lances or Servo Control regulators with EASY!Lock.	Order no. 4.111-031.0
4			EASY!Lock – AVS Adaptor for connecting high-pressure hoses with AVS swivel connection and EASY!Force high-pressure gun.	Order no. 4.111-032.0
5			EASY!Lock – M 22 × 1.5 Adaptor for connecting EASY!Force trigger gun and spray lances with M 22 × 1.5 connection.	Order no. 4.111-033.0
6			EASY!Lock – M 22 × 1.5 Adaptor for connecting high-pressure hoses with M 22 × 1.5 connection and EASY!Force high-pressure gun/high-pressure cleaners with EASY!Lock.	Order no. 4.111-034.0
7			EASY!Lock – M 18 × 1.5 Adaptor for connecting spray lances with M 18 × 1.5 connection and nozzles with EASY!Lock.	Order no. 4.111-035.0
8			EASY!Lock – M 18 × 1.5 Adaptor for connecting spray lances with EASY!Lock and nozzles with M 18 × 1.5 connection.	Order no. 4.111-036.0

*For example, any high-pressure cleaner with M 22 × 1.5 connection can quickly be converted to the new EASY!Lock system with adaptor 2.

TOP ACCESSORIES

Top-selling accessories can be found in the tables below with a direct comparison of the old and new part number. Safety at a glance.

Trigger guns and Servo Control		
Product name	Old order no.	New order no.
EASY!Force Advanced	-	4.118-005.0
Easy Press	4.775-466.0	-
Servo Control up to 750 l/h	4.775-526.0	4.118-007.0
Servo Control 750-1100 l/h	4.775-470.0	4.118-008.0
Servo Control from 1100 l/h	4.775-471.0	4.118-009.0
High-pressure hoses		
Product name	Old order no.	New order no.
High-pressure hose DN 6, 10 m, 250 bar	6.391-238.0	6.110-034.0
High-pressure hose DN 6, 15 m, 250 bar	6.391-417.0	6.110-036.0
High-pressure hose DN 8, 10 m, 315 bar	6.391-342.0 6.390-025.0	6.110-031.0
High-pressure hose DN 8, 15 m, 315 bar	6.390-185.0	6.110-033.0
High-pressure hose DN 8, 20 m, 315 bar	6.390-171.0	6.110-032.0
High-pressure hose DN 8, 10 m, 400 bar	6.388-083.0 6.391-351.0	6.110-038.0
High-pressure hose DN 8, 20 m, 400 bar	6.390-208.0	6.110-028.0
High-pressure hose DN 8, 20 m, 400 bar	6.390-027.0	6.110-027.0
Hose connector	4.403-002.0	4.111-037.0
Spray lances		
Product name	Old order no.	New order no.
Spray lance, rotatable, 600 mm	4.760-664.0	4.112-007.0
Spray lance, rotatable, 840 mm	4.760-663.0	4.112-006.0
Spray lance, rotatable, 1,050 mm	4.760-660.0	4.112-000.0
Spray lance, rotatable, 1,550 mm	4.760-661.0	4.112-018.0
Spray lance, rotatable, 2,050 mm	4.760-662.0	4.112-021.0
Extra handle	-	4.321-380.0
Screw socket	4.402-002.0	4.111-038.0
Nozzles		
Product name	Old order no.	New order no.
Power nozzle 25050	2.883-399.0	2.113-023.0
Power nozzle connector	5.401-210.0	4.112-011.0
Triple nozzle 034	4.767-147.0	4.117-029.0
Dirtblaster Performance 035	4.767-230.0	4.114-019.0
Dirtblaster Professional 050	4.763-253.0	4.114-027.0
Special accessories		
Product name	Old order no.	New order no.
Cup foam lance 025	6.394-968.0	2.112-017.0
Cup foam lance 042	6.394-969.0	2.112-018.0
FR 30 Me	2.640-355.0	2.111-013.0
FRV 30	2.642-999.0	2.111-010.0



makes a difference

Please contact us for more information:

Head Office Germany

Alfred Kärcher GmbH & Co. KG
Alfred-Kärcher-Straße 28-40
71364 Winnenden

Phone +49 7195-14-0
Fax +49 7195-14-2212

www.kaercher.com

North America

Kärcher North America
4555 Airport Way
Denver, CO 80239
USA

Phone +1 303-738-5805
Fax +1 303-865-2758

www.karcherna.com

United Kingdom

Kärcher (UK) Ltd
Kärcher House
Beaumont Road
Banbury
Oxon OX16 1TB

Phone +44 1295-752-000
Fax +44 1295-267-511

www.karcher.co.uk

Ireland

Kärcher Ltd
Unit 4
E.P. Mooney Business Park
Walkinstown Avenue
Dublin 12

Phone +353 1-409-7777
Fax +353 1-409-7775

www.karcher.ie

South East Asia

Regional Head Office
South East Asia

Karcher South East Asia Pte Ltd
3 Depot Close #01-01
Singapore 109840

Phone +65 6897-1811
Fax +65 6897-1611

www.karcher.com.sg

Hong Kong

Kärcher Limited
Unit 05, 13/F, Nanyang Plaza
57 Hung To Road
Kwun Tong, Kowloon

Phone +852 2-357-5863
Fax +852 2-357-5632

www.karcher.com.hk

Australia

Karcher Pty Ltd
40 Koornang Road
Scoresby VIC 3179
Melbourne, Victoria

Phone +61 3-9765-2300
Fax +61 3-9765-2398

www.karcher.com.au

New Zealand

Karcher Ltd
66 Allens Road
East Tamaki
Auckland 2013

Phone +64 9-274-4603
Fax +64 9-274-6932

www.karcher.co.nz

South Africa

Kärcher (Pty) Ltd
Cnr Mount Joy & George Allen Rd
Wilbart Ext. 2
PO Box 11818
Vorna Valley, 1686

Phone +27 11-657-7300
Fax +27 11-657-7440

www.karcher.co.za

Dubai

Karcher FZE
Quality Cleaning Systems
Jebel Ali Free Zone
Plot No. S-10104 South Zone
RA 08, XB 1, Jebel Ali

Phone +971 4-886-1177
Fax +971 4-886-1575

www.kaercher.com